



# INSTALLATION • OPERATION • MAINTENANCE I N S T R U C T I O N S

## TYPE COD CURRENT SENSING RELAY 0.5-2 AND 1-4 AMPERE RANGES

**CAUTION:** Before putting relays into service, remove all blocking which may have been inserted for the purpose of securing the parts during shipment, make sure that all moving parts operate freely, inspect the contacts to see that they are clean and close properly, and operate the relay to check the settings and electrical connections.

### CONSTRUCTION

The relay consists of an induction disc type current sensing unit.

#### Current Sensing Unit

The electromagnet is an "E" type laminated structure with the tapped current coil mounted on the center leg that produces a flux which divides and returns through the outer legs. A shading coil on the right leg, front view, causes the flux to lag the main pole flux. The out-of-phase fluxes, thus produced in the air gap cause torque on the disc. The current sensing unit has a tap block which provides two current ranges.

### CHARACTERISTICS

The type COD relay has adjustable Lower and Raise current contacts that can be set around a calibrated scale between the limits of 0.5 and 2 amperes or 1 and 4 amperes. The moving contact assumes a position corresponding to the current through the relay and will stay in that position until the current changes. If the current changes either gradually or suddenly, the contact will assume a new position corresponding to the change unless the travel is limited by the setting of the adjustable contacts.

The induction unit has inverse timing; that is, the greater the change in current the faster the relay contact will travel.

### SETTINGS

The current sensing unit settings can be defined either by contact setting or tap setting. The lower and raise current contact settings are described under "Characteristics."

---

There are two tap settings; the .5 amp. tap and the 1-4 amp tap. The connector screw on the tap plate to the left of the scale makes connections to the two taps on the operating coil. The tap setting is made by placing this screw in the desired tap as marked on the tap plate.

### Caution

Since the tap block connector screw carries operating current, be sure that the screw is turned tight. In order to avoid opening the current transformer circuits when changing taps under load, connect the spare connector screw in the desired tap position before removing the other tap screw from the original tap position.

### INSTALLATION

The relays should be mounted on switchboard panels or their equivalent in a location free from dirt, moisture, excessive vibration and heat.

Mount the relay vertically by means of the mounting stud for the type FT projection case or by means of the four mounting holes on the flange for the semi-flush type FT case. Either the stud or the mounting screws may be utilized for grounding the relay. The electrical connections may be made directly to the terminals by means of screws for steel panel mounting or to the terminal stud furnished with the relay for thick panel mounting. The terminal stud may be easily removed or inserted by locking two nuts on the stud and then turning the proper nut with a wrench.

For detailed information on the FT case refer to I.L. 41-076.

### ADJUSTMENTS AND MAINTENANCE

The proper adjustments to insure correct operation of this relay have been made at the factory. Upon receipt of the relay no customer adjustments, other than those covered under "SETTINGS" should be required.

### Acceptance Check

The following check is recommended to insure that the relay is in proper working order:

#### A. Current Sensing Unit

##### Adjustment Check

1. Contact - Set the left-hand contact in the center of the scale and adjust the current until the moving contact just makes. Set the left-hand contact back out of the way and bring the right-hand contact up until the contacts just

make. The right pointer should be within  $\pm 1/32$ " if where the left-hand pointer was.

2. Calibration Check - Check the scale markings by setting either of the two contacts at a value marked on the scale, then alternately apply this current plus .1 amp and minus .1 amp. Contacts should make and break respectively. The 1.25 amp. setting on the .5-2 amp. range should coincide with 2.5 amp. setting on the 1.4 range.

### Routine Maintenance

All relays should be inspected periodically and the time operation should be checked at least once every year or at such other time intervals as may be dictated by experience to be suitable to the particular application. The use of phantom loads, in testing induction-type relays, should be avoided, since the resulting distorted current wave form will produce an error in timing.

All contacts should be periodically cleaned. A contact burnisher #182A836H01 is recommended for this purpose. The use of abrasive material for cleaning contacts is not recommended, because of the danger of embedding small particles in the face of the soft silver and thus impairing the contact.

### CALIBRATION

Use the following procedure for calibrating the relay if the relay has been taken apart for repairs or the adjustments disturbed. This procedure should not be used until it is apparent that the relay is not in proper working order. (See "Acceptance Check").

#### A. Current Sensing Unit

1. Contacts - Apply sufficient current to the relay, to make the disc float in the center of its travel. Move both of the adjustable contacts until they just make with the moving contact. If the two contact pointers do not meet at the same point on the scale, adjust the follow on both adjustable contacts. Approximately the same follow should be in each of the adjustable stationary contacts.

2. Calibration Check - The adjustment of the spring tension in calibrating the relay is most conveniently made with the damping magnet removed.

Set either of the adjustable stationary contacts in the center of its travel and apply this current to the relay. Wind up the spiral spring by means of the spring adjuster until the stationary contact and moving contact just make.

Check the other scale markings by setting the adjustable contact on these markings and applying the corresponding current to the relay. The contacts should make within plus or minus .1 amp of scale marking for the 1-4 amp range and .05 amps for the .5 to 2 amp. range. The 1.25 amp. marking on the .5-2 amp range should coincide with the 2.5 amp. marking on the 1-4 amp. range.

RENEWAL PARTS

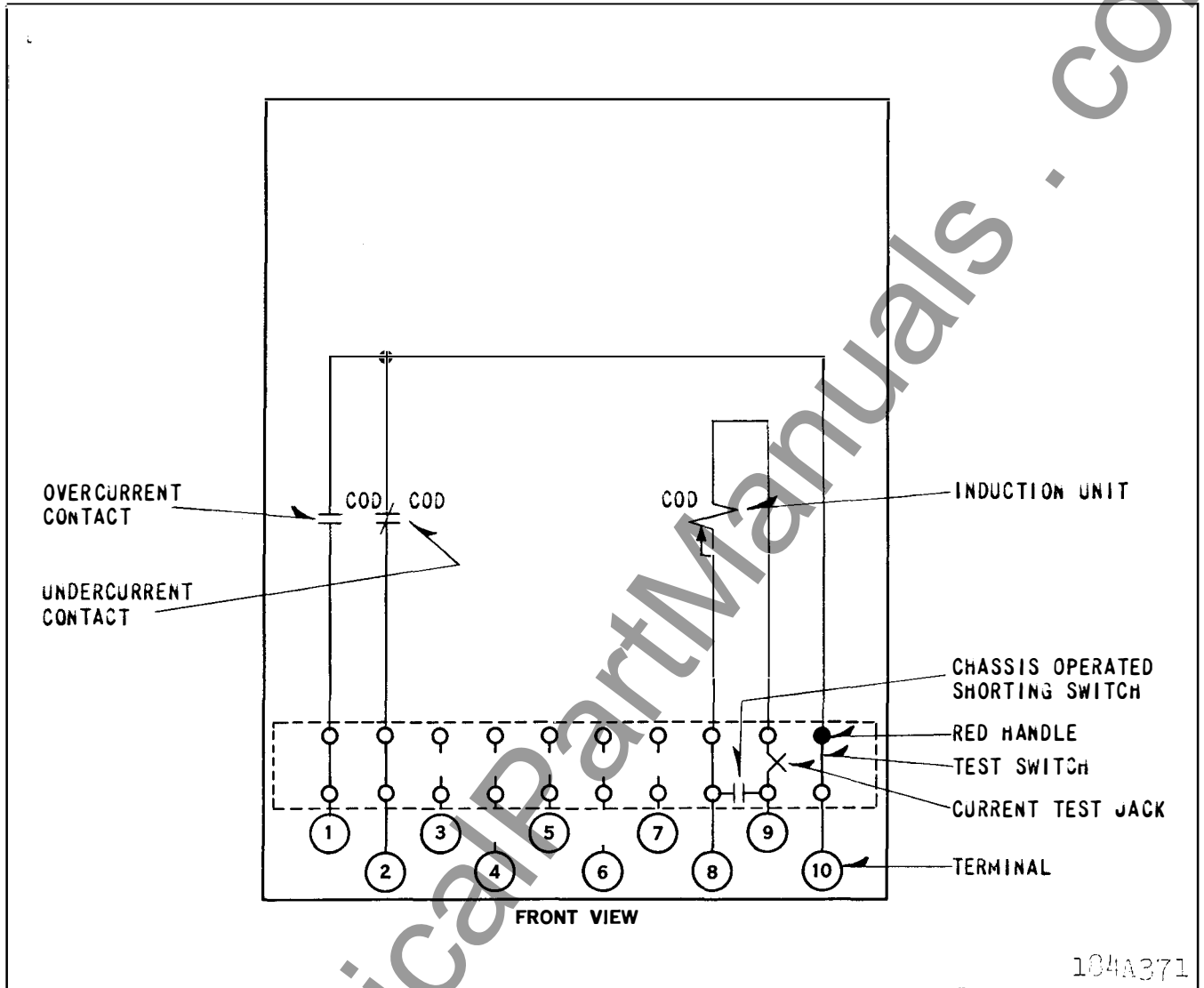
Repair work can be done most satisfactorily at the factory. However, interchangeable parts can be furnished to the customers who are equipped for doing repair work. When ordering parts, always give the complete nameplate data.

ENERGY REQUIREMENTS

The 60 cycle burden for the relay are as follows:

Current sensing, induction unit.

	<u>.5-2 range</u>	<u>1.4 range</u>
Continuous rating	4 amps	8 amps
One second rating	110 amps	230 amps
Burden	3VA/70° at 1.25A	3VA/70° at 2.5A



104A371

Fig. 1. Internal Schematic of the Type COD Relay in Type FT11 Case.

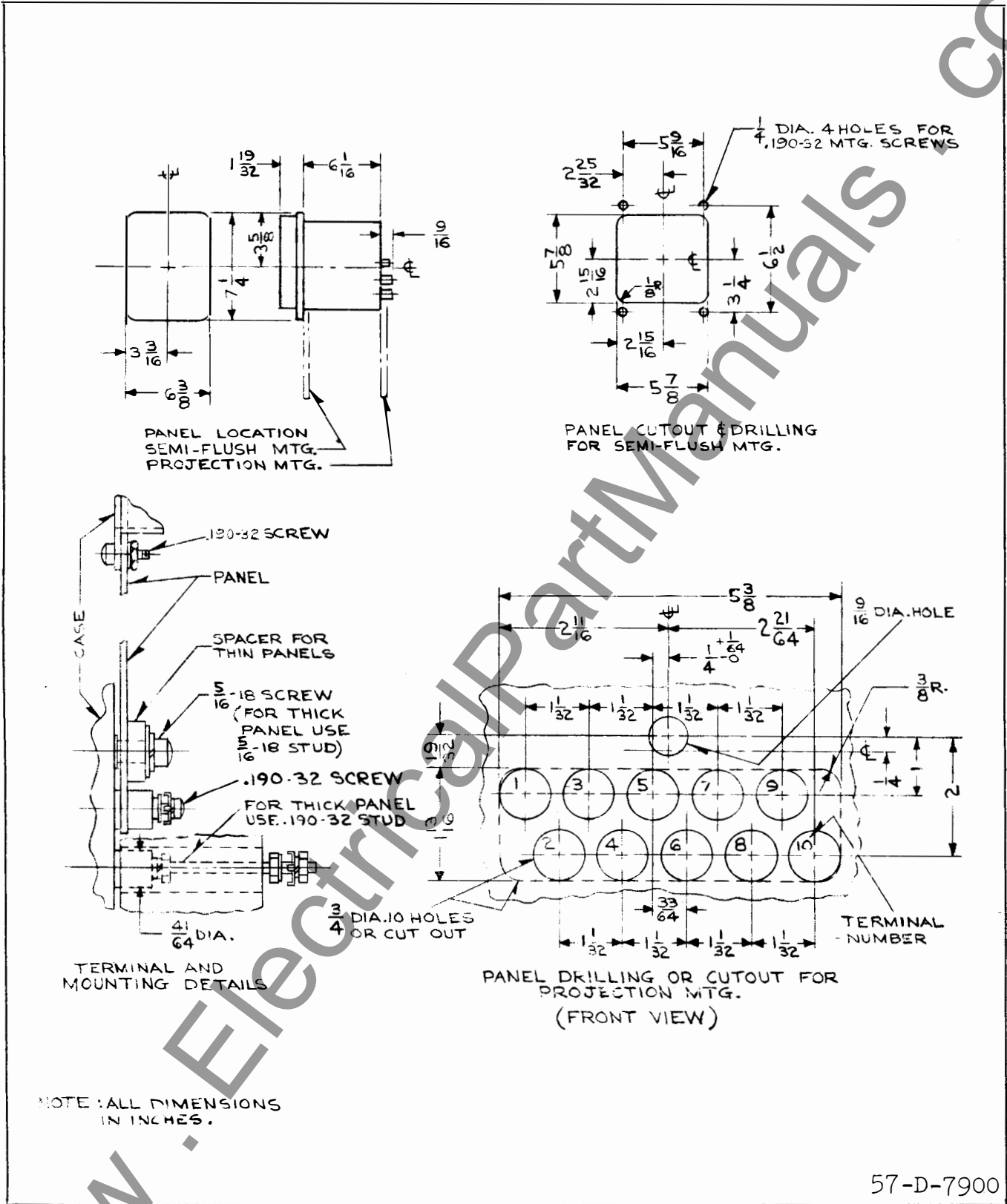


Fig. 2. Outline and Drilling Plan for the Type COD Relay in Type PTL1 Case.

[www.ElectricalPartManuals.com](http://www.ElectricalPartManuals.com)



**WESTINGHOUSE ELECTRIC CORPORATION**  
**RELAY-INSTRUMENT DIVISION**

**NEWARK, N. J.**

**Printed in U.S.A.**



# INSTALLATION • OPERATION • MAINTENANCE I N S T R U C T I O N S

## TYPE COD CURRENT SENSING RELAY

**CAUTION:** Before putting relays into service, remove all blocking which may have been inserted for the purpose of securing the parts during shipment, make sure that all moving parts operate freely, inspect the contacts to see that they are clean and close properly, and operate the relay to check the settings and electrical connections.

### APPLICATION

These relays are used to initiate switching or control operations when the line current rises above a preset value, or falls below a preset value. Thus the relay is a current sensing device with high and low current settings.

### CONSTRUCTION

The relay consists of an induction disc type current sensing unit.

#### Current Sensing Unit

The electromagnet is an "E" type laminated structure with a current coil, which may be tapped, mounted on the center leg that produces a flux which divides and returns through the outer legs. A shading coil on the right leg, front view, causes the flux to lag the main pole flux. The out-of-phase fluxes, thus produced in the air gap cause torque on the disc.

When the current sensing unit contact closes to the right this indicates that the line current is at or above the value of current desired. Conversely when the current sensing unit contact closes to the left this indicates that the line current is at or below value of current desired.

#### \* Indicating Contactor Switch Unit (ICS) (Optional)

The d-c indicating contactor switch is a small clapper type device. A magnetic armature, to which leaf-spring mounted contacts are attached, is attracted to the magnetic core upon energization of the switch. When the switch closes the moving contacts bridge two stationary contacts, completing the trip circuit. Also during this operation two fingers on the armature deflect a spring located on the front of

the switch, which allows the operation indicator target to drop.

\* The front spring, in addition to holding the target, provides restraint for the armature and thus controls the pickup value of the switch.

### CHARACTERISTICS

The type COD current sensing relay has adjustable high and low current contacts that can be set around a 150° arc which is calibrated in amperes on non-tapped relays, or in percent of tap value current on tapped relays. These values represent the tripping position of the moving contacts when that value of current is applied to the relay. For the tapped relays the percent scale markings are 80, 85, 90, 95, 100, 105 and 110.

The relays are available in the following ranges:

* Range	Taps							
.5 - 2.5	0.5	0.6	0.8	1.0	1.5	2.0	2.5	
2 - 6	2	2.5	3	3.5	4	5	6	
4 - 12	4	5	6	7	8	10	12	
.2 - .8	none							
.5 - 2	none							
1.5 - 6	none							

The moving contacts will assume a position corresponding to the current applied to the relay and will stay in that position until the current changes. If the current changes either gradually or suddenly, the contact will assume a new position corresponding to the change unless the travel is limited by the setting of the adjustable contacts. If the contacts are set to close for a particular value of current, and if a current of that exact amount is applied, then the relay is operating at its minimum trip point and the times on repeated operations are not repetitive within close tolerances. However, currents appreciably greater than the overcurrent setting, or appreciably less than the undercurrent setting, result in relay timing operations which are consistent for repeated trials.

The induction unit has inverse timing; that is, the greater the change in current the faster the relay contact will travel.

SUPERSEDES I.L. 41-112A

\*Denotes change from superseded issue.

EFFECTIVE MAY 1971

## TYPE COD RELAY

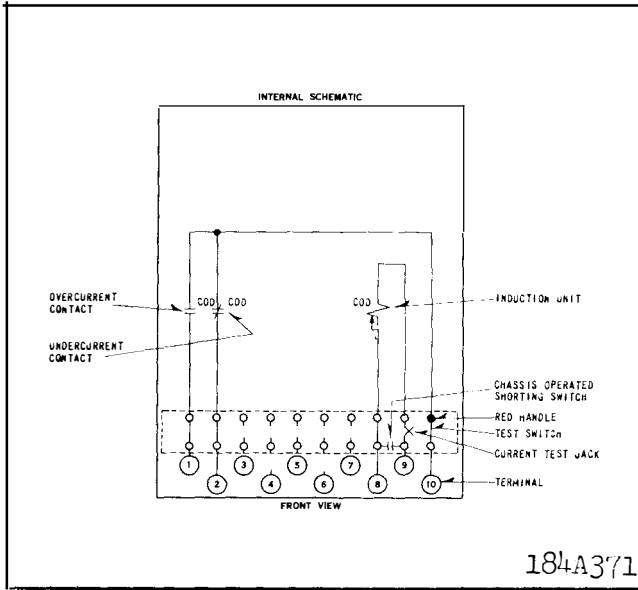


Fig. 1 Internal Schematic of the Tapped Type COD Relay in the Type FT 11 Case.

### INSTALLATION

The relays should be mounted on switchboard panels or their equivalent in a location free from dirt, moisture, excessive vibration, and heat. Mount the relay vertically by means of the four mounting holes on the flange for semi-flush mounting or by means of the rear mounting stud or studs for projection mounting. Either a mounting stud or the mounting screws may be utilized for grounding the relay. The electrical connections may be made directly to the terminals by means of screws for steel panel mounting or to the terminal studs furnished with the relay for thick panel mounting. The terminal studs may be easily removed or inserted by locking two nuts on the stud and then turning the proper nut with a wrench.

\* For detailed FT case information refer to I.L. 41-076. See Fig. 4 for outline & drilling plan.

### SETTINGS

The current sensing unit settings can be defined either by contact settings or tap setting. The high and low current contact settings are described under "Characteristics".

Relays which are tapped have a connector screw on the terminal plate above the scale which makes connections to various turns on the operating coil. The tap setting is made by placing this screw in the desired tap as marked on the terminal plate.

#### Caution

Since the tap block connector screw carries

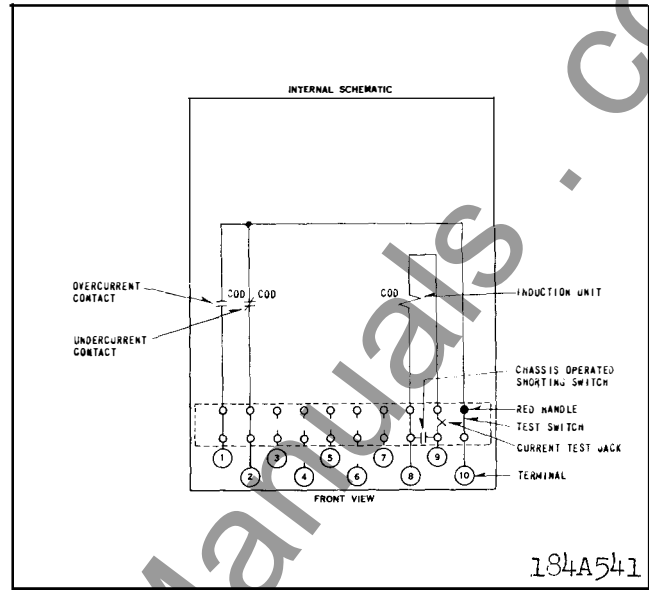


Fig. 2 Internal Schematic of the Non-Tapped Type COD Relay in the Type FT 11 Case.

operating current, be sure that the screw is turned tight. In order to avoid opening the current transformer circuits when changing taps under load, connect the spare connector screw in the desired tap position before removing the other tap screw from the original tap position.

#### \* Indicating Contactor Switch (ICS) (Optional)

The only setting required on the ICS unit, is the selection of the 0.2 or 2.0 ampere tap setting. This selection is made by connecting the lead located in front of the tap block to the desired setting by means of the connecting screw.

### ADJUSTMENTS AND MAINTENANCE

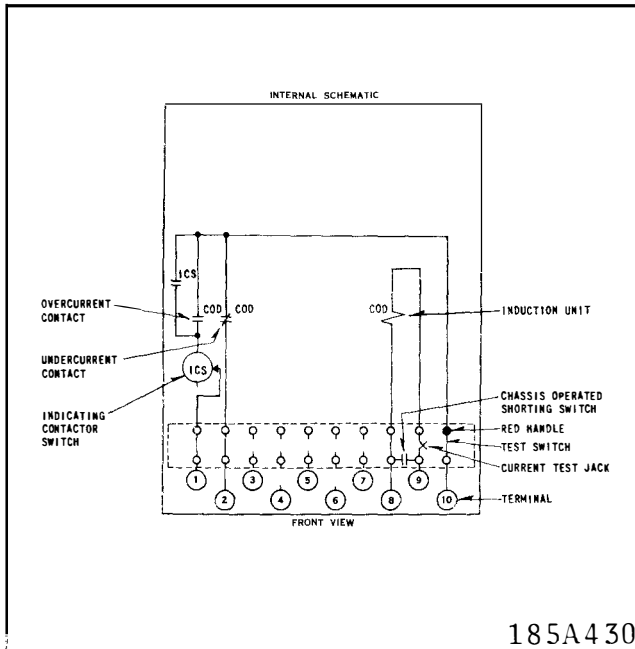
The proper adjustments to insure correct operation of this relay have been made at the factory. Upon receipt of the relay no customer adjustments, other than those covered under "SETTING" should be required.

#### Acceptance Check

The following check is recommended to insure that the relay is in proper working order:

##### A. Current Sensing Unit

1. Contact Adjustment Check – Set the left-hand contact in the center of the scale and adjust the current until the moving contact just makes. Move the left-hand contact out of the way and bring the right-hand contact up until the contacts just make. The right pointer should be within  $\pm 1/32''$  of where the left-hand pointer was.



185A430

Fig. 3 Internal Schematic of the Non-Tapped Type COD Relay with ICS Unit in overcurrent circuit in the Type FT-11 case.

2. Calibration Check — Check the scale markings by setting either of the two contacts at a value marked on the scale, then alternately apply this current plus 0.1 amp and minus 0.1 amp for non-tapped relays, and plus and minus 3% for tapped relays. The undercurrent contact should make at the lower current and break at the higher current. For the overcurrent contact check, the contact will make for the higher current and break at the lower current.

### B. Indicating Contactor Switch (ICS) (Optional)

Close the main relay contacts in over current circuit and pass sufficient d-c current through the trip circuit to close the contacts of the ICS. This value of current should be not greater than the particular ICS tap setting being used. The operation indicator target should drop freely.

#### Routine Maintenance

All relays should be inspected periodically and the time of operation should be checked at least once every year or at such other time intervals as may be dictated by experience to be suitable to the particular application. The use of phantom loads, in testing induction-type relays, should be avoided, since the resulting distorted current wave form will produce an error in operation.

All contacts should be periodically cleaned. A contact bursher #182A836H01 is recommended for this purpose. The use of abrasive material for clean-

ing contacts is not recommended, because of the danger of embedding small particles in the face of the soft silver and thus impairing the contact.

## CALIBRATION

Use the following procedure for calibrating the relay if the relay has been taken apart for repairs or the adjustments disturbed. This procedure should not be used until it is apparent that the relay is not in proper working order. (See "Acceptance Check").

### A. Current Sensing Unit

1. Contacts — Apply sufficient current to the relay, to make the disc float in the center of its travel. Move both of the adjustable contacts until they just make with the moving contact. If the two contact pointers do not meet at the same point on the scale ( $\pm 1/32''$ ), adjust the follow on both adjustable contacts. Approximately the same follow should be in each of the adjustable stationary contacts.

2. Calibration Check — The adjustment of the spring tension in calibrating the relay is most conveniently made with the damping magnet removed.

Set either of the adjustable stationary contacts in the center of its travel and apply this current to the relay. Wind up the spiral spring by means of the spring adjuster until the stationary contact and moving contact just make.

Check the other markings by setting the adjustable contact on these markings and applying the corresponding current to the relay. The contacts should make within plus or minus .1 amp of contact setting for non-tapped relays and plus or minus 3% of contact setting for tapped relays.

### \* B. Indicating Contactor Switch (ICS) (Optional)

Close the main relay contacts in overcurrent circuit and pass sufficient d-c current through the trip circuit to close the contacts of the ICS. This value of current should be not greater than the particular ICS tap setting being used. The operation indicator target should drop freely.

\* The contact gap should be approximately .047'' between the bridging moving contact and the adjustable stationary contacts. The bridging moving contact should touch both stationary contacts simultaneously.

## RENEWAL PARTS

Repair work can be done most satisfactorily at the factory. However, interchangeable parts can be furnished to the customers who are equipped for doing repair work. When ordering parts, always give the complete nameplate data.

ENERGY REQUIREMENTS

The 60 cycle burdens for the COD relay are as follows:

Tapped Relays

AMPERE RANGE	TAP	CONTINUOUS RATING (AMPERES)	ONE SECOND RATING* (AMPERES)	POWER FACTOR ANGLE $\phi$	VOLT AMPERES**			
					AT TAP VALUE CURRENT	AT 3 TIMES TAP VALUE CURRENT	AT 10 TIMES TAP VALUE CURRENT	AT 20 TIMES TAP VALUE CURRENT
0.5/2.5	(0.5)	2.7	88	72	2.38	21	132	350
	(0.6)	3.1	88	71	2.38	21	134	365
	(0.8)	3.7	88	69	2.40	21.1	142	400
	(1.0)	4.1	88	67	2.42	21.2	150	440
	(1.5)	5.7	88	62	2.51	22	170	530
	(2.0)	6.8	88	57	2.65	23.5	200	675
	(2.5)	7.7	88	53	2.74	24.8	228	800
2/6	(2)	8	230	70	2.38	21	136	360
	(2.5)	8.8	230	66	2.40	21.1	142	395
	(3)	9.7	230	64	2.42	21.5	149	430
	(3.5)	10.4	230	62	2.48	22	157	470
	(4)	11.2	230	60	2.53	22.7	164	500
	(5)	12.5	230	58	2.64	24	180	580
	(6)	13.7	230	56	2.75	25.2	198	660
4/12	(4)	16	460	68	2.38	21.3	146	420
	(5)	18.8	460	63	2.46	21.8	158	480
	(6)	19.3	460	60	2.54	22.6	172	550
	(7)	20.8	460	57	2.62	23.6	190	620
	(8)	22.5	460	54	2.73	24.8	207	700
	(10)	25	460	48	3.00	27.8	248	850
	(12)	28	460	45	3.46	31.4	292	1020

Non-Tapped Relays

AMPERE RANGE	CONTINUOUS RATING (AMPERES)	POWER FACTOR ANGLE $\phi$	VOLT AMPERES**		
			AT MINIMUM SETTING	AT MAXIMUM SETTING	AT 5 AMPERES
.5/2	5	76	0.48	7.6	42.5
1.5/6	12	74	0.48	7.6	4.7

\*Thermal capacities for short times other than one second may be calculated on the basis of time being inversely proportional to the square of the current.

$\phi$  Degrees current lags voltage at tap value current.

\*\*Voltages taken with Rectox type voltmeter.

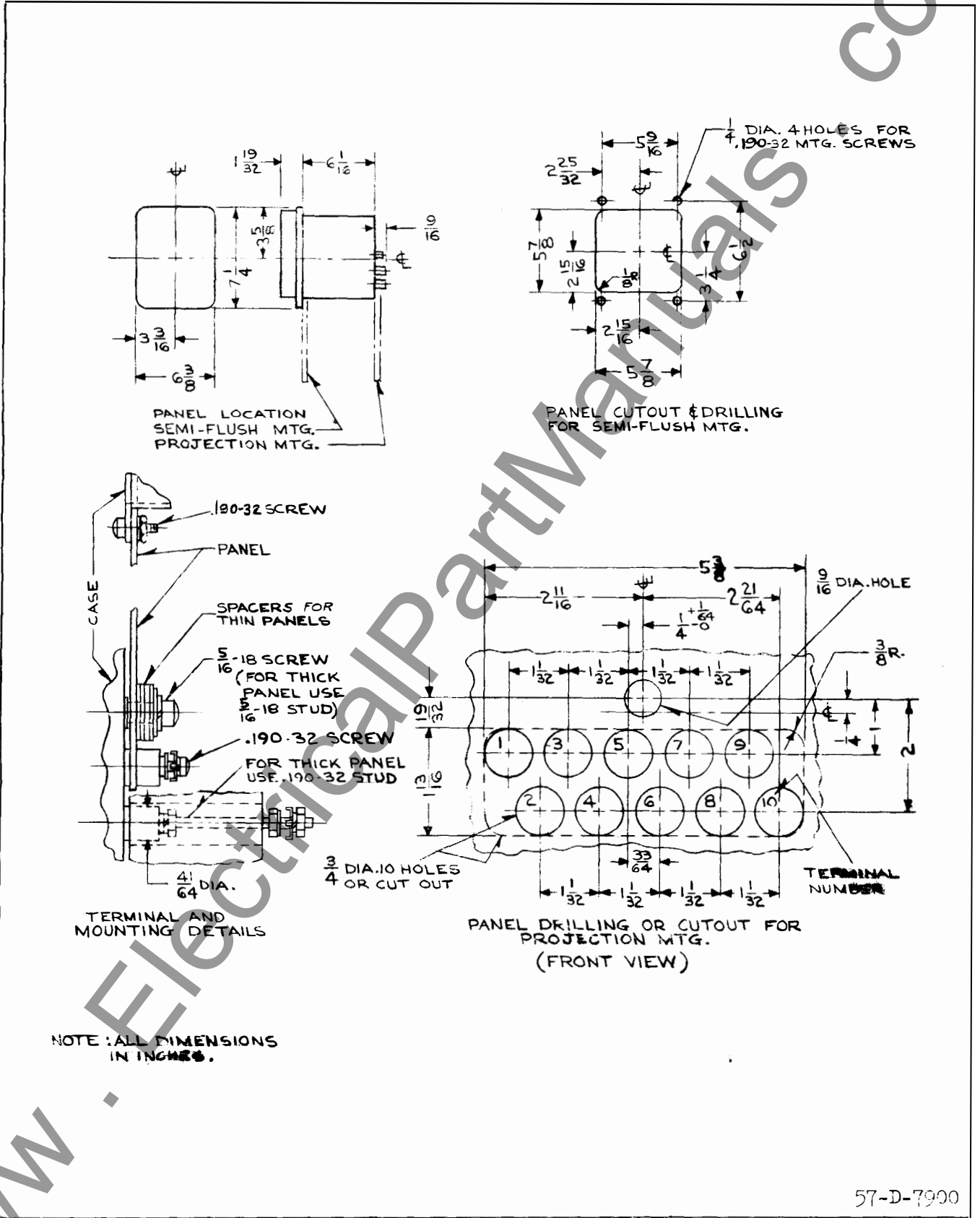


Fig. 4 Outline and Drilling Plan for the Type COD Relay in the Type FT 11 Case.

[www.ElectricalPartManuals.com](http://www.ElectricalPartManuals.com)

[www.ElectricalPartManuals.com](http://www.ElectricalPartManuals.com)



**WESTINGHOUSE ELECTRIC CORPORATION**  
**RELAY-INSTRUMENT DIVISION**

**NEWARK, N. J.**

Printed in U.S.A.



# INSTALLATION • OPERATION • MAINTENANCE INSTRUCTIONS

## TYPE COD CURRENT SENSING RELAY 0.5-2 AND 1-4 AMPERE RANGES

**CAUTION:** Before putting relays into service, remove all blocking which may have been inserted for the purpose of securing the parts during shipment, make sure that all moving parts operate freely, inspect the contacts to see that they are clean and close properly, and operate the relay to check the settings and electrical connections.

### CONSTRUCTION

The relay consists of an induction disc type current sensing unit.

#### Current Sensing Unit

The electromagnet is an "E" type laminated structure with the tapped current coil mounted on the center leg that produces a flux which divides and returns through the outer legs. A shading coil on the right leg, front view, causes the flux to lag the main pole flux. The out-of-phase fluxes, thus produced in the air gap cause torque on the disc. The current sensing unit has a tap block which provides two current ranges.

### CHARACTERISTICS

The type COD relay has adjustable Lower and Raise current contacts that can be set around a calibrated scale between the limits of 0.5 and 2 amperes or 1 and 4 amperes. The moving contact assumes a position corresponding to the current through the relay and will stay in that position until the current changes. If the current changes either gradually or suddenly, the contact will assume a new position corresponding to the change unless the travel is limited by the setting of the adjustable contacts.

The induction unit has inverse timing; that is, the greater the change in current the faster the relay contact will travel.

### SETTINGS

The current sensing unit settings can be defined either by contact setting or tap setting. The lower and raise current contact settings are described under "Characteristics."

---

There are two tap settings; the .5 amp. tap and the 1-4 amp tap. The connector screw on the tap plate to the left of the scale makes connections to the two taps on the operating coil. The tap setting is made by placing this screw in the desired tap as marked on the tap plate.

#### Caution

Since the tap block connector screw carries operating current, be sure that the screw is turned tight. In order to avoid opening the current transformer circuits when changing taps under load, connect the spare connector screw in the desired tap position before removing the other tap screw from the original tap position.

#### INSTALLATION

The relays should be mounted on switchboard panels or their equivalent in a location free from dirt, moisture, excessive vibration and heat.

Mount the relay vertically by means of the mounting stud for the type FT projection case or by means of the four mounting holes on the flange for the semi-flush type FT case. Either the stud or the mounting screws may be utilized for grounding the relay. The electrical connections may be made directly to the terminals by means of screws for steel panel mounting or to the terminal stud furnished with the relay for thick panel mounting. The terminal stud may be easily removed or inserted by locking two nuts on the stud and then turning the proper nut with a wrench.

For detailed information on the FT case refer to I.L. 41-076.

#### ADJUSTMENTS AND MAINTENANCE

The proper adjustments to insure correct operation of this relay have been made at the factory. Upon receipt of the relay no customer adjustments, other than those covered under "SETTINGS" should be required.

#### Acceptance Check

The following check is recommended to insure that the relay is in proper working order:

##### A. Current Sensing Unit

##### Adjustment Check

1. Contact - Set the left-hand contact in the center of the scale and adjust the current until the moving contact just makes. Set the left-hand contact back out of the way and bring the right-hand contact up until the contacts just

make. The right pointer should be within  $\pm 1/32$ " if where the left-hand pointer was.

2. Calibration Check - Check the scale markings by setting either of the two contacts at a value marked on the scale, then alternately apply this current plus .1 amp and minus .1 amp. Contacts should make and break respectively. The 1.25 amp. setting on the .5-2 amp. range should coincide with 2.5 amp. setting on the 1.4 range.

### Routine Maintenance

All relays should be inspected periodically and the time operation should be checked at least once every year or at such other time intervals as may be dictated by experience to be suitable to the particular application. The use of phantom loads, in testing induction-type relays, should be avoided, since the resulting distorted current wave form will produce an error in timing.

All contacts should be periodically cleaned. A contact burnisher #182A836H01 is recommended for this purpose. The use of abrasive material for cleaning contacts is not recommended, because of the danger of embedding small particles in the face of the soft silver and thus impairing the contact.

### CALIBRATION

Use the following procedure for calibrating the relay if the relay has been taken apart for repairs or the adjustments disturbed. This procedure should not be used until it is apparent that the relay is not in proper working order. (See "Acceptance Check").

#### A. Current Sensing Unit

1. Contacts - Apply sufficient current to the relay, to make the disc float in the center of its travel. Move both of the adjustable contacts until they just make with the moving contact. If the two contact pointers do not meet at the same point on the scale, adjust the follow on both adjustable contacts. Approximately the same follow should be in each of the adjustable stationary contacts.

2. Calibration Check - The adjustment of the spring tension in calibrating the relay is most conveniently made with the damping magnet removed.

Set either of the adjustable stationary contacts in the center of its travel and apply this current to the relay. Wind up the spiral spring by means of the spring adjuster until the stationary contact and moving contact just make.

---

Check the other scale markings by setting the adjustable contact on these markings and applying the corresponding current to the relay. The contacts should make within plus or minus .1 amp of scale marking for the 1-4 amp range and .05 amps for the .5 to 2 amp. range. The 1.25 amp. marking on the .5-2 amp range should coincide with the 2.5 amp. marking on the 1-4 amp. range.

#### RENEWAL PARTS

Repair work can be done most satisfactorily at the factory. However, interchangeable parts can be furnished to the customers who are equipped for doing repair work. When ordering parts, always give the complete nameplate data.

#### ENERGY REQUIREMENTS

The 60 cycle burden for the relay are as follows:

Current sensing, induction unit.

	<u>.5-2 range</u>	<u>1.4 range</u>
Continuous rating	4 amps	8 amps
One second rating	110 amps	230 amps
Burden	<u>3VA/70°</u> at 1.25A	<u>3VA/70°</u> at 2.5A

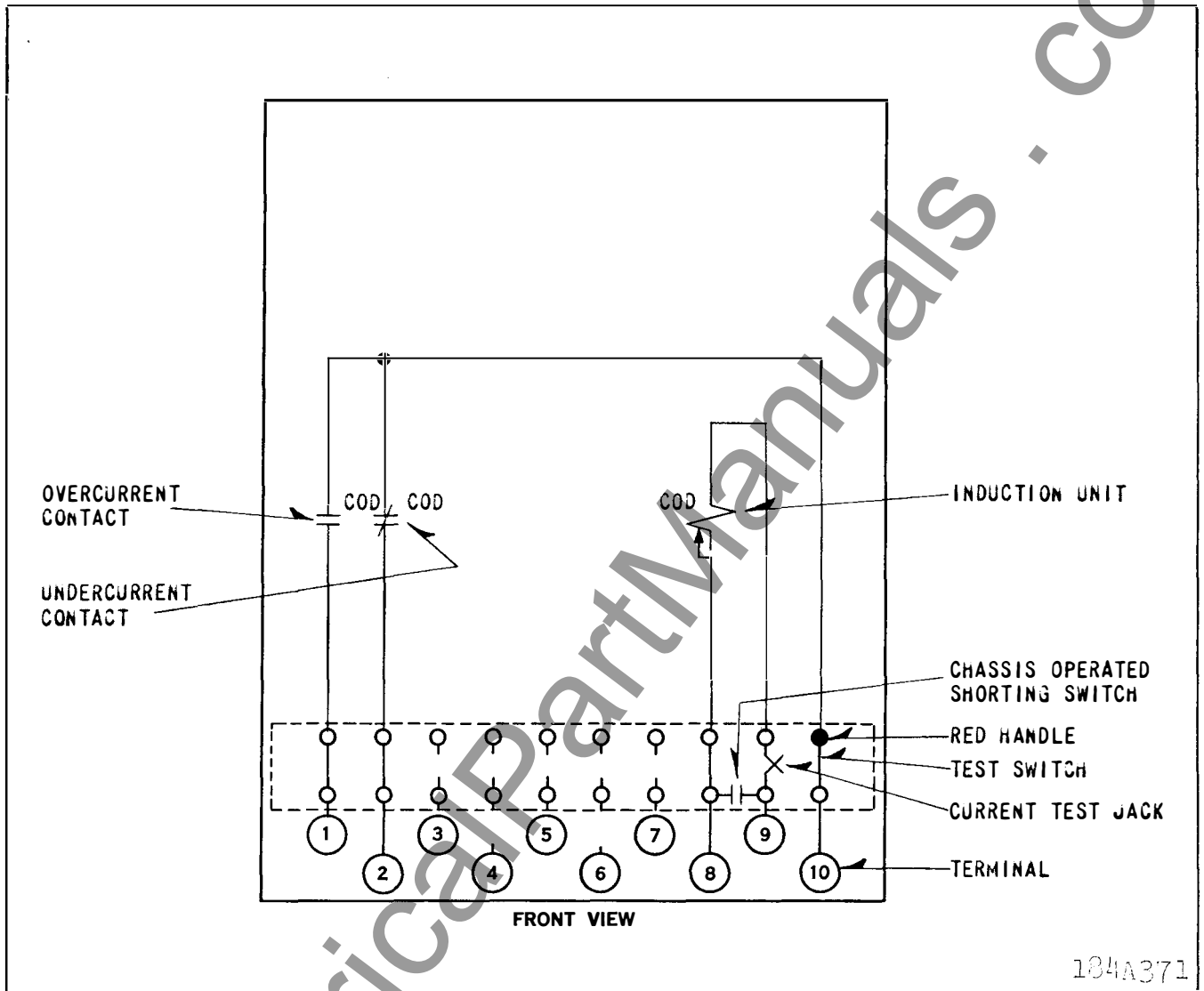


Fig. 1. Internal Schematic of the Type COD Relay in Type FT11 Case.

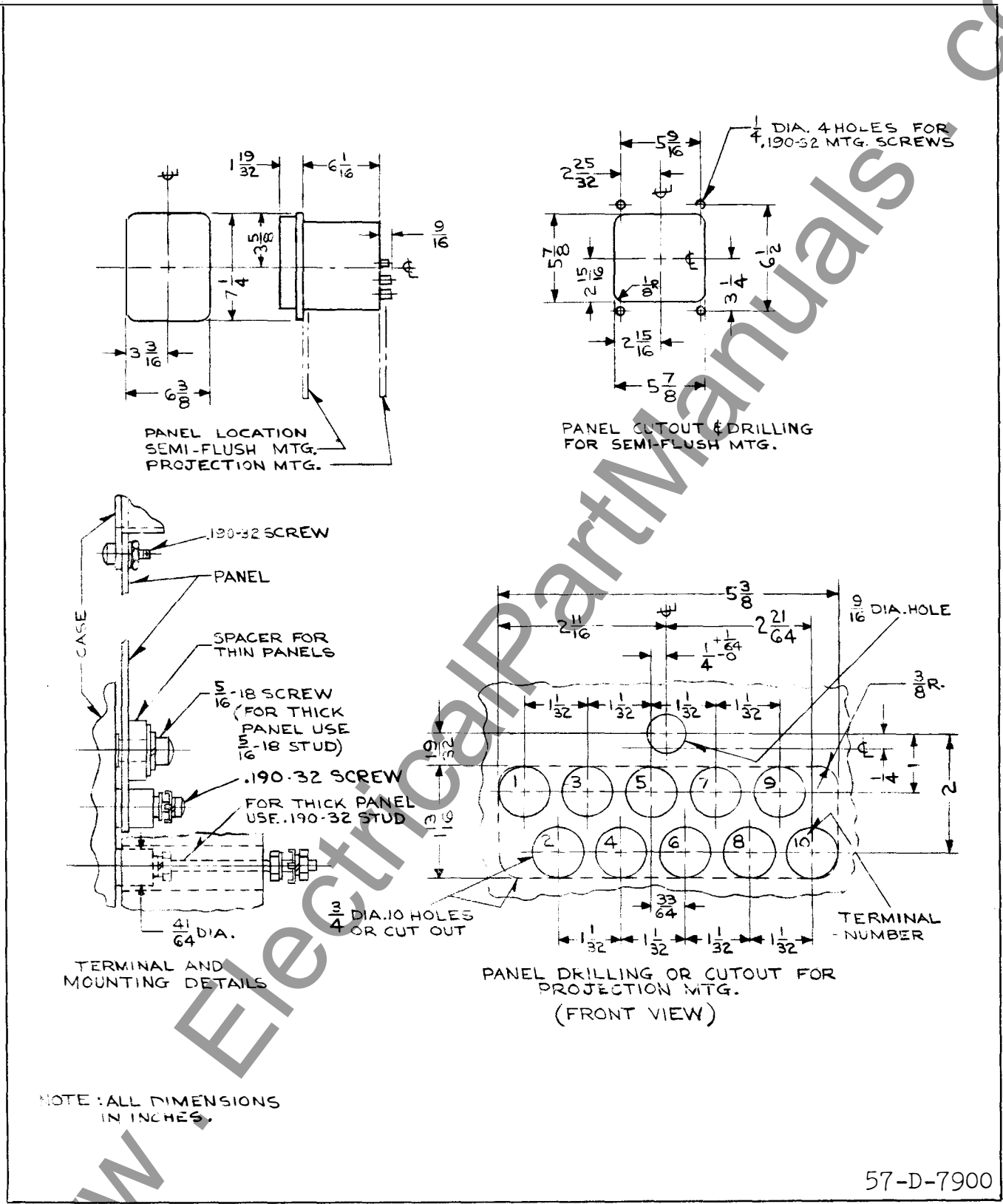


Fig. 2. Outline and Drilling Plan for the Type COD Relay in Type PTL1 Case.

[www.ElectricalPartManuals.com](http://www.ElectricalPartManuals.com)



**WESTINGHOUSE ELECTRIC CORPORATION**  
**RELAY DEPARTMENT**

**NEWARK, N. J.**

Printed in U. S. A.



# INSTALLATION • OPERATION • MAINTENANCE I N S T R U C T I O N S

## TYPE COD CURRENT SENSING RELAY

**CAUTION:** Before putting relays into service, remove all blocking which may have been inserted for the purpose of securing the parts during shipment, make sure that all moving parts operate freely, inspect the contacts to see that they are clean and close properly, and operate the relay to check the settings and electrical connections.

### APPLICATION

These relays are used to initiate switching or control operations when the line current rises above a preset value, or falls below a preset value. Thus the relay is a current sensing device with high and low current settings.

### CONSTRUCTION

The relay consists of an induction disc type current sensing unit.

#### Current Sensing Unit

The electromagnet is an "E" type laminated structure with a current coil, which may be tapped, mounted on the center leg that produces a flux which divides and returns through the outer legs. A shading coil on the right leg, front view, causes the flux to lag the main pole flux. The out-of-phase fluxes, thus produced in the air gap cause torque on the disc.

When the current sensing unit contact closes to the right this indicates that the line current is at or above the value of current desired. Conversely when the current sensing unit contact closes to the left this indicates that the line current is at or below value of current desired.

### CHARACTERISTICS

The type COD current sensing relay has adjustable high and low current contacts that can be set around a 150° arc which is calibrated in amperes on non-tapped relays, or in percent of tap value current on tapped relays. These values represent the tripping

position of the moving contacts when that value of current is applied to the relay. For the tapped relays the percent scale markings are 80, 85, 90, 95, 100, 105 and 110.

The relays are available in the following ranges:

Range	Taps							
.5 - 2.5	0.5	0.6	0.8	1.0	1.5	2.0	2.5	
2 - 6	2	2.5	3	3.5	4	5	6	
4 - 12	4	5	6	7	8	10	12	
.5 - 2					none			
1.5 - 6					none			

The moving contacts will assume a position corresponding to the current applied to the relay and will stay in that position until the current changes. If the current changes either gradually or suddenly, the contact will assume a new position corresponding to the change unless the travel is limited by the setting of the adjustable contacts. If the contacts are set to close for a particular value of current, and if a current of that exact amount is applied, then the relay is operating at its minimum trip point and the times on repeated operations are not repetitive within close tolerances. However, currents appreciably greater than the overcurrent setting, or appreciably less than the undercurrent setting, result in relay timing operations which are consistent for repeated trials.

The induction unit has inverse timing; that is, the greater the change in current the faster the relay contact will travel.

### INSTALLATION

The relays should be mounted on switchboard panels or their equivalent in a location free from dirt, moisture, excessive vibration, and heat. Mount the relay vertically by means of the four mounting holes on the flange for semi-flush mounting or by means of the rear mounting stud or studs for projection mounting. Either a mounting stud or the mounting screws may be utilized for grounding the relay. The electrical connections may be made directly to the terminals by means of screws for steel panel mounting or to the

SUPERSEDES I. L. 41-112

\*Denotes change from superseded issue

EFFECTIVE OCTOBER 1961

## TYPE COD RELAY

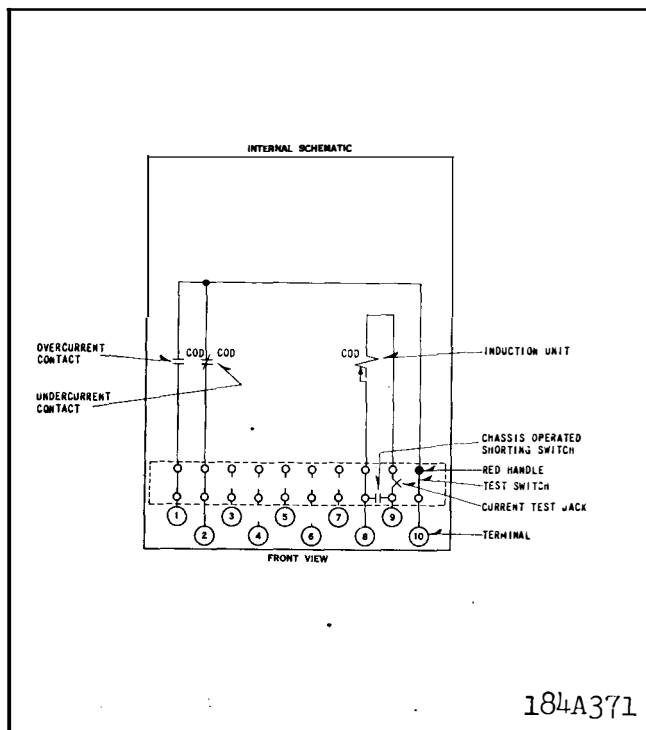


Fig. 1 Internal Schematic of the Tapped Type COD Relay in the Type FT 11 Case.

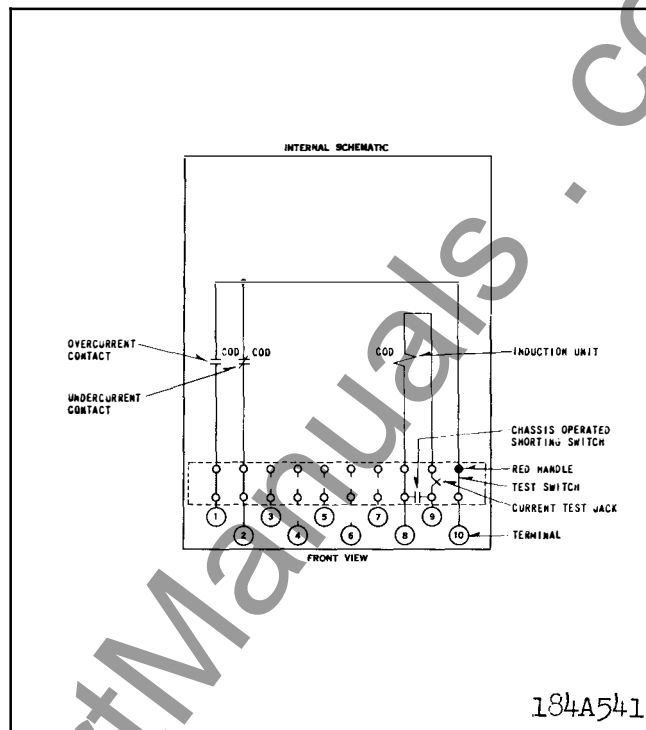


Fig. 2 Internal Schematic of the Non-Tapped Type COD Relay in the Type FT 11 Case.

terminal studs furnished with the relay for thick panel mounting. The terminal studs may be easily removed or inserted by locking two nuts on the stud and then turning the proper nut with a wrench.

For detailed FT case information refer to I. L. 41-076

### SETTINGS

The current sensing unit settings can be defined either by contact settings or tap setting. The high and low current contact settings are described under "Characteristics".

Relays which are tapped have a connector screw on the terminal plate above the scale which makes connections to various turns on the operating coil. The tap setting is made by placing this screw in the desired tap as marked on the terminal plate.

#### Caution

Since the tap block connector screw carries operating current, be sure that the screw is turned tight. In order to avoid opening the current transformer circuits when changing taps under load, connect the spare connector screw in the desired tap position before removing the other tap screw from the original

tap position.

### ADJUSTMENTS AND MAINTENANCE

The proper adjustments to insure correct operation of this relay have been made at the factory. Upon receipt of the relay no customer adjustments, other than those covered under "SETTING" should be required.

#### Acceptance Check

The following check is recommended to insure that the relay is in proper working order:

##### A. Current Sensing Unit

1. Contact Adjustment Check — Set the left-hand contact in the center of the scale and adjust the current until the moving contact just makes. Move the left-hand contact out of the way and bring the right-hand contact up until the contacts just make. The right pointer should be within  $\pm 1/32''$  of where the left-hand pointer was.

2. Calibration Check — Check the scale markings by setting either of the two contacts at a value marked on the scale, then alternately apply this current plus 0.1 amp and minus 0.1 amp for non-tapped

- relays, and plus and minus 3% for tapped relays. The
- \* undercurrent contact should make at the lower current and break at the higher current. For the overcurrent contact check, the contact will make for the higher current and break at the lower current.

#### Routine Maintenance

All relays should be inspected periodically and the time of operation should be checked at least once every year or at such other time intervals as may be dictated by experience to be suitable to the particular application. The use of phantom loads, in testing induction-type relays, should be avoided, since the resulting distorted current wave form will produce an error in operation.

All contacts should be periodically cleaned. A contact burnisher #182A836H01 is recommended for this purpose. The use of abrasive material for cleaning contacts is not recommended, because of the danger of embedding small particles in the face of the soft silver and thus impairing the contact.

### CALIBRATION

Use the following procedure for calibrating the relay if the relay has been taken apart for repairs or the adjustments disturbed. This procedure should not be used until it is apparent that the relay is not in proper working order. (See "Acceptance Check").

#### A. Current Sensing Unit

1. Contacts — Apply sufficient current to the relay, to make the disc float in the center of its travel. Move both of the adjustable contacts until they just make with the moving contact. If the two contact pointers do not meet at the same point on the scale (\*  $\pm 1/32''$ ), adjust the follow on both adjustable contacts. Approximately the same follow should be in each of the adjustable stationary contacts.

2. Calibration Check — The adjustment of the spring tension in calibrating the relay is most conveniently made with the damping magnet removed.

Set either of the adjustable stationary contacts in the center of its travel and apply this current to the relay. Wind up the spiral spring by means of the spring adjuster until the stationary contact and moving contact just make.

Check the other markings by setting the adjustable contact on these markings and applying the corresponding current to the relay. The contacts should make within plus or minus .1 amp of contact setting for non-tapped relays and plus or minus 3% of contact setting for tapped relays.

### RENEWAL PARTS

Repair work can be done most satisfactorily at the factory. However, interchangeable parts can be furnished to the customers who are equipped for doing repair work. When ordering parts, always give the complete nameplate data.

ENERGY REQUIREMENTS

The 60 cycle burdens for the COD relay are as follows:

Tapped Relays

AMPERE RANGE	TAP	CONTINUOUS RATING (AMPERES)	ONE SECOND RATING* (AMPERES)	POWER FACTOR ANGLE $\phi$	VOLT AMPERES**			
					AT TAP VALUE CURRENT	AT 3 TIMES TAP VALUE CURRENT	AT 10 TIMES TAP VALUE CURRENT	AT 20 TIMES TAP VALUE CURRENT
0.5/2.5	(0.5)	2.7	88	72	2.38	21	132	350
	(0.6)	3.1	88	71	2.38	21	134	365
	(0.8)	3.7	88	69	2.40	21.1	142	400
	(1.0)	4.1	88	67	2.42	21.2	150	440
	(1.5)	5.7	88	62	2.51	22	170	530
	(2.0)	6.8	88	57	2.65	23.5	200	675
	(2.5)	7.7	88	53	2.74	24.8	228	800
2/6	(2)	8	230	70	2.38	21	136	360
	(2.5)	8.8	230	66	2.40	21.1	142	395
	(3)	9.7	230	64	2.42	21.5	149	430
	(3.5)	10.4	230	62	2.48	22	157	470
	(4)	11.2	230	60	2.53	22.7	164	500
	(5)	12.5	230	58	2.64	24	180	580
	(6)	13.7	230	56	2.75	25.2	198	660
4/12	(4)	16	460	68	2.38	21.3	146	420
	(5)	18.8	460	63	2.46	21.8	158	480
	(6)	19.3	460	60	2.54	22.6	172	550
	(7)	20.8	460	57	2.62	23.6	190	620
	(8)	22.5	460	54	2.73	24.8	207	700
	(10)	25	460	48	3.00	27.8	248	850
	(12)	28	460	45	3.46	31.4	292	1020

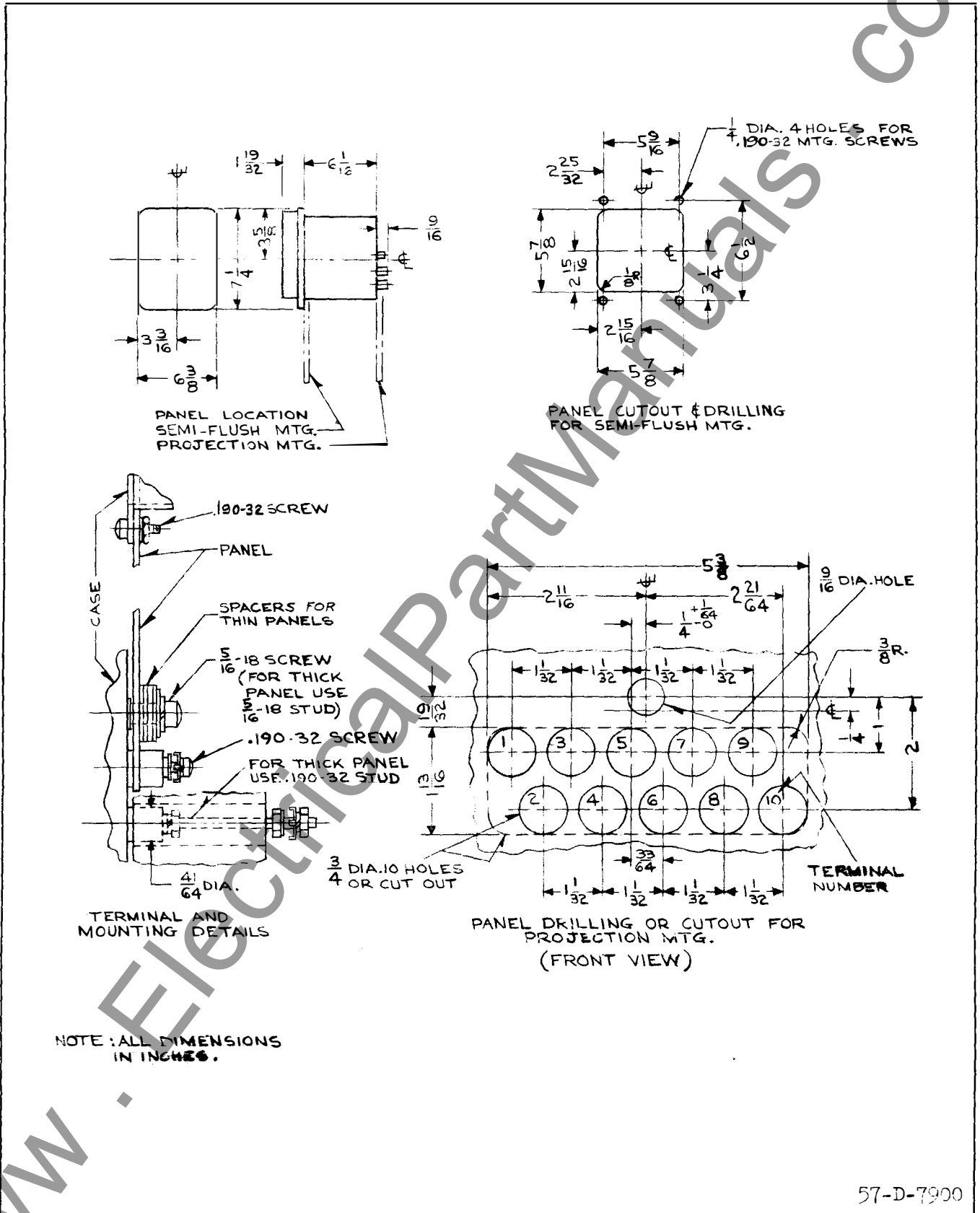
Non-Tapped Relays

AMPERE RANGE	CONTINUOUS RATING (AMPERES)	POWER FACTOR ANGLE $\phi$	VOLT AMPERES**		
			AT MINIMUM SETTING	AT MAXIMUM SETTING	AT 5 AMPERES
.5/2	5	76	0.48	7.6	42.5
1.5/6	12	74	0.48	7.6	4.7

\*Thermal capacities for short times other than one second may be calculated on the basis of time being inversely proportional to the square of the current.

$\phi$  Degrees current lags voltage at tap value current.

\*\* Voltages taken with Rectox type voltmeter.



\* Fig. 3 Outline and Drilling Plan for the Type COD Relay in the Type FT 11 Case.

[www.ElectricalPartManuals.com](http://www.ElectricalPartManuals.com)

[www.ElectricalPartManuals.com](http://www.ElectricalPartManuals.com)



**WESTINGHOUSE ELECTRIC CORPORATION**  
**RELAY-INSTRUMENT DIVISION**

**NEWARK, N. J.**

Printed in U.S.A.