

Installation Instructions for 200 Amp FDP Connector Kits



I.L. 15463
File 29-001

GENERAL

These connector kits are used to assemble 200 Amp, Type FDP switches as shown below to panelboards for either branch or main switch applications. Two pole kits are furnished with phase "A" and phase "C" connectors. Where alternate phase connections are required, the phase "B" connector should be ordered separately. Style numbers are provided for identification.

Since the thickness of the panelboard bus varies with the ampere rating, the connecting hardware to the panelboard bus must be supplied by the assembler. Again, because of mounting variations, the enclosure mounting hardware must also be supplied by the assembler.

CONNECTOR KIT CATALOG NUMBERS

	Two Pole	Three Pole
Branch Connector Kit	CB220FDP	CB320FDP
Main Connector Kit	CM220FDP	CM320FDP

INDIVIDUAL CONNECTOR STYLES

	Phase A	Phase B	Phase C
Branch Connector	2603D18G01	G02	G03
Main Connector	377D667G07	G05	G08
Spacer	377D667H02	H01	H02

APPLICABLE 200 AMP FDP SWITCH CATALOG NUMBERS

Description of Switch	AMP VOLTS POLE			CAT. NO.
	AMP	VOLTS	POLE	
	200	240	2	FDP3224
	200	240	3	FDP3324
	200	600	2	FDP3264
	200	600	3	FDP3364

INSTALLATION

1. Position the main or branch connectors as shown in either Figure 1 or Figure 2.
2. Fasten the connectors to the panelboard bus using 0.25 - 20 hardware of suitable length for the thickness of the bus involved. Hardware supplied by assembler.
3. Position the FDP Switch unit and secure to the panelboard mounting rails using assembler-supplied hardware.
4. For branch switch application, attach connectors provided to the switch inside terminals using the 0.25 - 20 x 0.50 pan head screws provided. Tighten to approximately 6 - 8 ft. lbs. torque.
5. For main switch application, attach connectors provided to the switch load side terminals using the 0.25 - 20 x 2.25 hex head bolts and lockwashers provided. Tighten to approximately 6 - 8 ft. lbs. torque.
6. All connections should be well mated and tight before energizing switch.

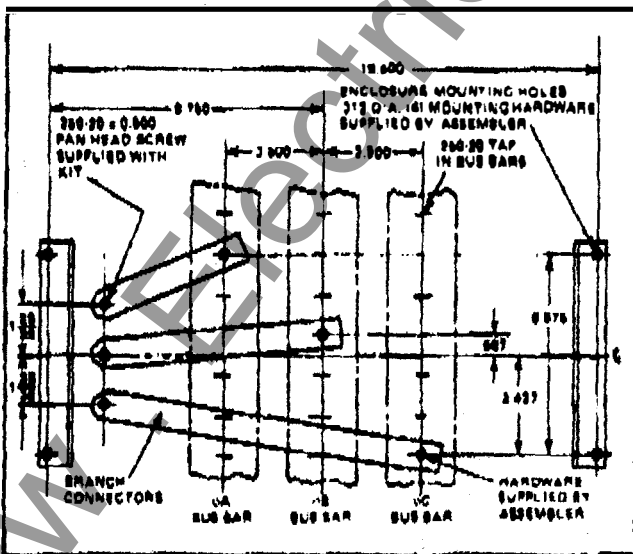


Fig. 1

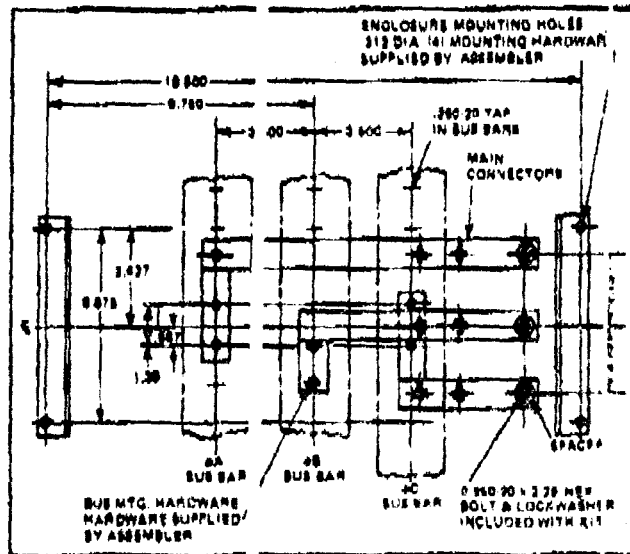


Fig. 2

Effective November 1982

Installation Instructions for 200 Amp FDP Connector Kits



I.L. 13463
File 29-001

copy file 3/17/88

GENERAL

These connector kits are used to assemble 200 Amp, Type FDP switches as shown below to panelboards for either branch or main switch applications. Two pole kits are furnished with phase "A" and phase "C" connectors. Where alternate phase connections are required, the phase "B" connector should be ordered separately. Style numbers are provided for identification.

Since the thickness of the panelboard bus varies with the ampere rating, the connecting hardware to the panelboard bus must be supplied by the assembler. Again, because of mounting variations, the enclosure mounting hardware must also be supplied by the assembler.

CONNECTOR KIT CATALOG NUMBERS

	Two Pole	Three Pole
Branch Connector Kit	CB220FDP	CB320FDP
Main Connector Kit	CM220FDP	CM320FDP

INDIVIDUAL CONNECTOR STYLES

	Phase A	Phase B	Phase C
Branch Connector	2603D18G01	G02	G03
Main Connector	377D667G07	G05	G08
Spacer	377D667H02	H01	H02

APPLICABLE 200 AMP FDP SWITCH CATALOG NUMBERS

Description of Switch			CAT. NO.
AMP	VOLTS	POLE	
200	240	2	FDP322
200	240	3	FDP323
200	600	2	FDP326
200	600	3	FDP327

INSTALLATION

1. Position the main or branch connectors as shown in either Figure 1 or Figure 2.
2. Fasten the connectors to the panelboard bus using 0.25 - 20 hardware with suitable length for the thickness of the bus involved. Hardware supplied by assembler.
3. Position the FDP Switch unit and secure to the panelboard mounting rails using assembler-supplied hardware.
4. For branch switch application, attach connectors provided to the switch line side terminals using the 0.25 - 20 x 0.50 pan head screws provided. Tighten to approximately 6 - 8 ft. lbs. torque.
5. For main switch application, attach connectors provided to the switch load side terminals using the 0.25 - 20 x 2.25 hex head bolts and lockwashers provided. Tighten to approximately 6 - 8 ft. lbs. torque.
6. All connections should be well mated and tight before energizing switch.

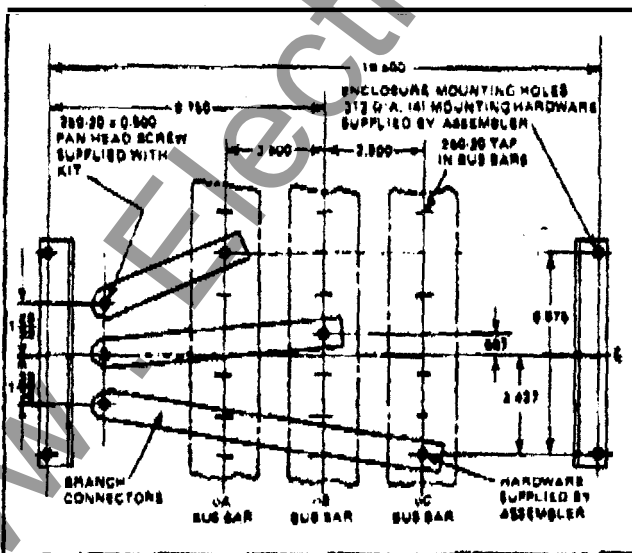


Fig. 1

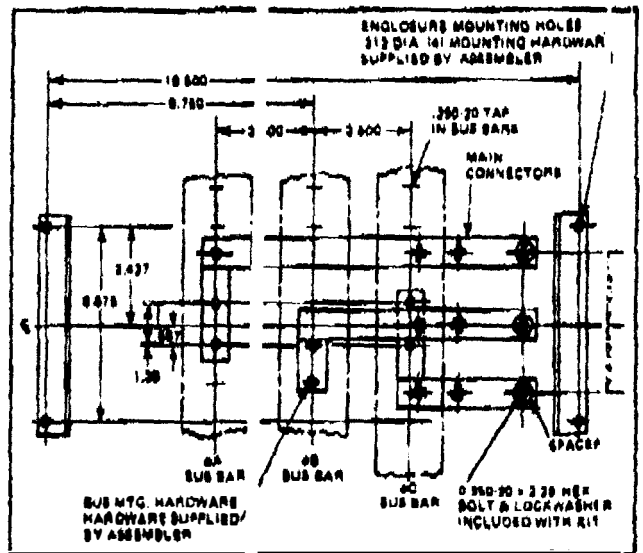


Fig. 2

Installation Instructions for 200 Amp FDP Connector Kits

Copy 2/19/88



I.L. 13462
File 29-001

GENERAL

These connector kits are used to assemble 200 Amp, Type FDP switches as shown below to panelboards for either branch or main switch applications. Two pole kits are furnished with phase "A" and phase "C" connectors. Where alternate phase connections are required, the phase "B" connector should be ordered separately. Style numbers are provided for identification.

Since the thickness of the panelboard bus varies with the ampere rating, the connecting hardware to the panelboard bus must be supplied by the assembler. Again, because of mounting variations, the enclosure mounting hardware must also be supplied by the assembler.

CONNECTOR KIT CATALOG NUMBERS

	Two Pole	Three Pole
Branch Connector Kit	CB220FDP	CB320FDP
Main Connector Kit	CM220FDP	CM320FDP

INDIVIDUAL CONNECTOR STYLES

	Phase A	Phase B	Phase C
Branch Connector	2603D18G01	G02	G03
Main Connector	377D667G07	G05	G08
Spacer	377D667H02	H01	H02

APPLICABLE 200 AMP FDP SWITCH CATALOG NUMBERS

Description of Switch			CAT. NO.
AMP	VOLTS	POLE	
200	240	2	FDP321
200	240	3	FDP324
200	600	2	FDP326
200	600	3	FDP328

INSTALLATION

1. Position the main or branch connectors as shown in either Figure 1 or Figure 2.
2. Fasten the connectors to the panelboard bus using 0.25 - 20 hardware with suitable length for the thickness of the bus involved. Hardware supplied by assembler.
3. Position the FDP Switch unit and secure to the panelboard mounting rails using assembler-supplied hardware.
4. For branch switch application, attach connectors provided to the switch inside terminals using the 0.25 - 20 x 0.50 pan head screws provided. Tighten to approximately 6 - 8 ft. lbs. torque.
5. For main switch application, attach connectors provided to the switch load side terminals using the 0.25 - 20 x 2.25 hex head bolts and lockwashers provided. Tighten to approximately 6 - 8 ft. lbs. torque.
6. All connections should be well mated and tight before energizing switch.

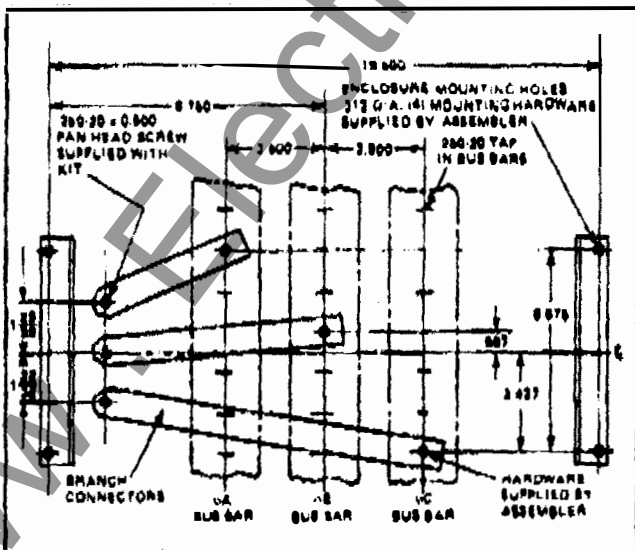


Fig. 1

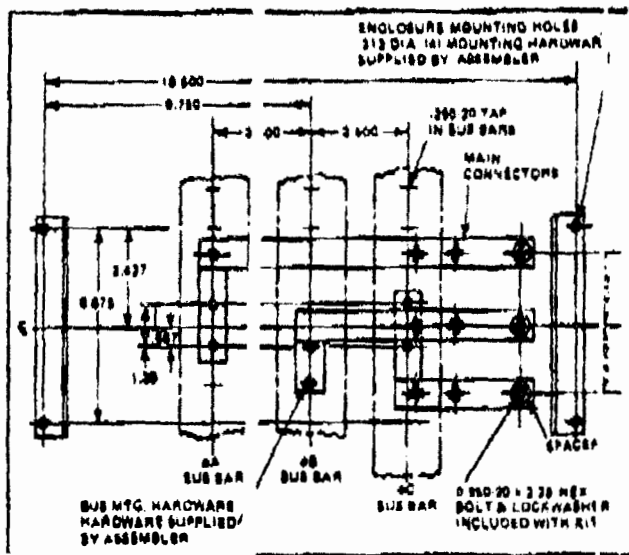


Fig. 2