



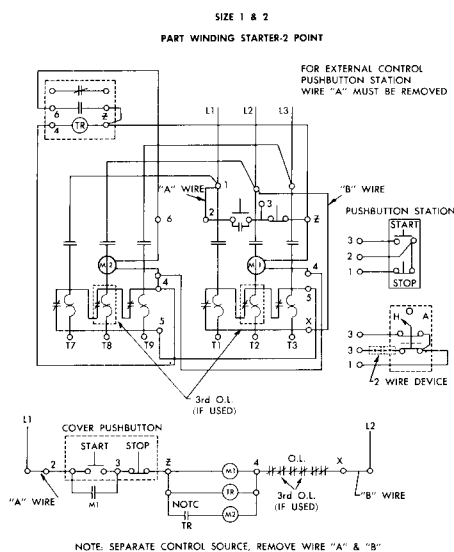
CLASS A55 A-C REDUCED-VOLTAGE STARTERS

PART-WINDING TYPE[^], CLOSED-CIRCUIT TRANSITION

PRICES, DIMENSIONS, WEIGHTS

3 POLE, 3 PHASE

600 VOLT A-C MAX., 60 CYCLES



NEMA Size	A-C Volts	Maximum Horsepower Ratings	OPEN		ENCLOSED			
			60 Cycle Cat. No.	List Price*	NEMA 1 General Purpose		NEMA 12 Industrial Use	
					60 Cycle Cat. No.	List Price*	60 Cycle Cat. No.	List Price*
2-POINT STARTING								
1PW	240	15	A55C24	\$219.	A55C241	\$225.	A55C242	\$325.
	480	20	A55C48		A55C481		A55C482	
	600	20	A55C60		A55C601		A55C602	
2PW	240	30	A55D24	302.	A55D241	318.	A55D242	443.
	480	50	A55D48		A55D481		A55D482	
	600	50	A55D60		A55D601		A55D602	
3PW	240	60	A55E24	418.	A55E241	446.	A55E242	596.
	480	100	A55E48		A55E481		A55E482	
	600	100	A55E60		A55E601		A55E602	
4PW	240	100	A55F24	895.	A55F241	947.	A55F242	1147.
	480	200	A55F48		A55F481		A55F482	
	600	200	A55F60		A55F601		A55F602	
3-POINT STARTING								
1PW	240	10	A550C24	502.	A550C241	518.	—	—
	480		A550C48		A550C481			
	600		A550C60		A550C601			
2PW	240	15	A551C24	512.	A551C241	528.	—	—
	480		A551C48		A551C481			
	600		A551C60		A551C601			
2PW	240	20	A552D24	668.	A552D241	696.	—	—
	480		A552C48		A552C481			
	600		A552C60		A552C601			
2PW	240	30	A553D24	698.	A553D241	726.	—	—
	480		A553D48		A553D481			
	600		A553D60		A553D601			
3PW	240	40	A554E24	939.	A554E241	991.	—	—
	480		A554D48		A554D481			
	600		A554D60		A554D601			
3PW	240	50	A555E24	949.	A555E241	1001.	—	—
	480		A555D48		A555D481			
	600		A555D60		A555D601			
3PW	240	60	A556E24	977.	A556E241	1029.	—	—
	480		A556E48		A556E481			
	600		A556E60		A556E601			
4PW	240	75	A557F24	2001.	A557F241	2076.	—	—
	480		A557E48		A557E481			
	600		A557E60		A557E601			
4PW	240	100	A558F24	2001.	A558F241	2076.	—	—
	480		A558E48		A558E481			
	600		A558E60		A558E601			

[^] For Wye-Connected Part-Winding Motors Only—Contact I-T-E Sales Office for information on open-delta-connected motor starters.

* Includes 4 thermal-overload heater elements. Deduct \$1.50 List for each heater unit omitted. Select heater units on basis of half full-load motor current from tables Section 6.9.1.5, pages 1-3. For Modifications, Accessories—See Section 6.8.

DIMENSIONS, WEIGHTS—A55 2-POINT STARTING

Enclosure Type	NEMA Size	Dimensions—Inches			Weight, Pounds
		Height	Width	Depth	
NEMA 1	1PW, 2PW	16	13	5 1/2	36
	3PW, 4PW	27	21	6 3/4	90
	NEMA 12	1PW, 2PW	18 1/2	13	5 1/2
3PW, 4PW		29 1/2	21	6 3/4	95

CLASS A58 STAR-DELTA TYPE, OPEN-CIRCUIT TRANSITION

3 POLE, 3 PHASE

600 VOLT AC MAX., 60 CYCLES

CLASS A59 STAR-DELTA TYPE, CLOSED-CIRCUIT TRANSITION

3 POLE, 3 PHASE

600 VOLT AC MAX., 60 CYCLES

Star-delta reduced-voltage starters are available for use with six or twelve-lead delta-connected motors. Contact your I-T-E Sales Office with full information on motor rating and circuit application.

CLASS A64 PRIMARY-RESISTOR TYPE, CLOSED-CIRCUIT TRANSITION

3 POLE, 3 PHASE

600 VOLT AC MAX., 60 CYCLES

Primary-resistor-type reduced-voltage starters are available. Contact your I-T-E Sales Office with full information on motor rating and circuit application.