



CONTROLS

RENEWAL PARTS ORDERING GUIDE

TYPES LA-1600 and LA-1600F

AIR CIRCUIT BREAKER

WITH

MANUAL OR ELECTRICAL

OPERATORS

www.ElectricalPartManuals.com

HOW TO USE YOUR RENEWAL PARTS ORDERING GUIDE

1. Locate the part or parts to be replaced in one of the drawings in this manual.
2. Identify each part by item number, description and part number. Give drawing figure number in which part is shown.
3. Include breaker type, rating and breaker serial number with your order.
4. Place order with your Allis-Chalmers representative.
5. When ordering relays or other electrical parts, include control voltage (see recommended spare parts list for part numbers).

ORDERING EXAMPLE

Type	<u>LA-1600</u>	Rated Amps	<u>1600</u>	Serial Number	<u>H-66679A-4</u>
Mode of Operation:	<input checked="" type="checkbox"/> Electrical		<input type="checkbox"/> Manual		
Renewal Parts Ordering Guide	<u>18X4559</u>				

Fig	Item	Description	Part Number	Quantity
1	22	Bearing	72-140-054-001	1
3	30	Spring	71-141-813-001	2
2	53	Bracket	71-142-384-001	1

If required part is not identified in this manual -----

1. Make a copy of the drawing figure in which the part would appear.
2. Indicate with arrows or other markings location of part.
3. Describe or sketch required part.
4. Include breaker type, rating and breaker serial number with your order.
5. Place order with your Allis-Chalmers representative.

TABLE OF CONTENTS

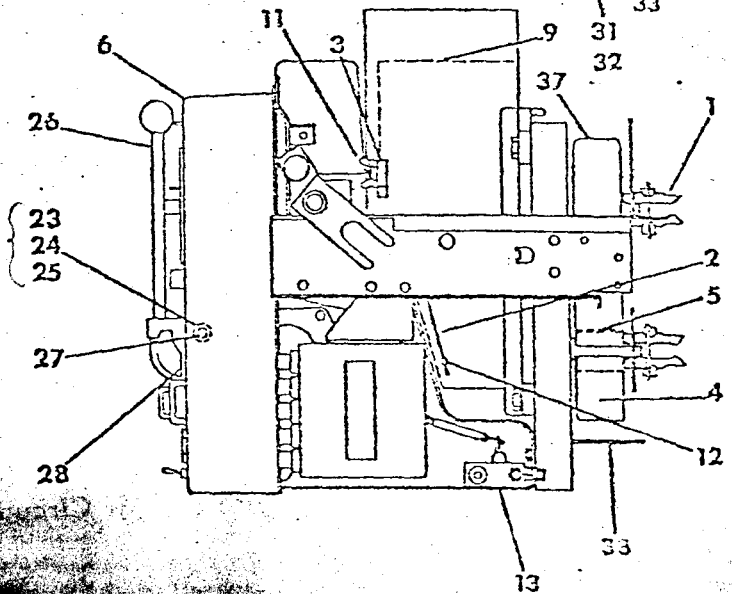
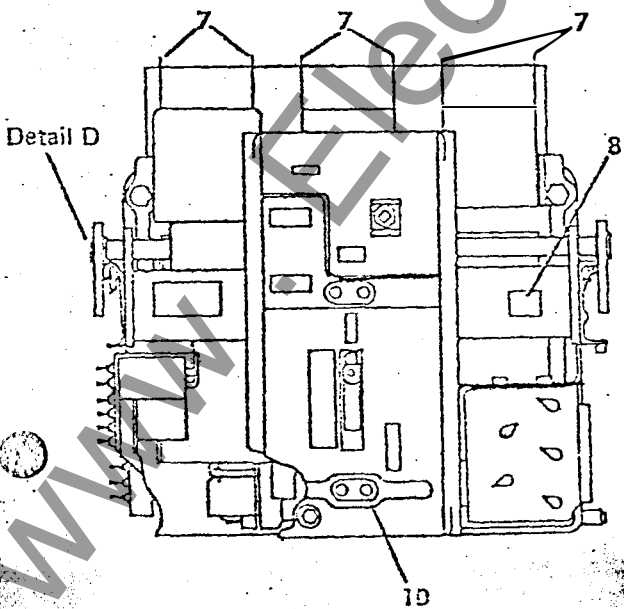
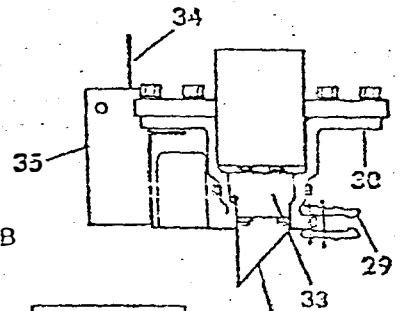
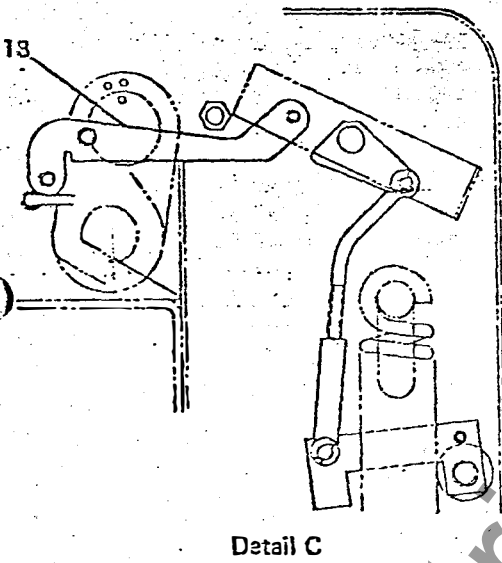
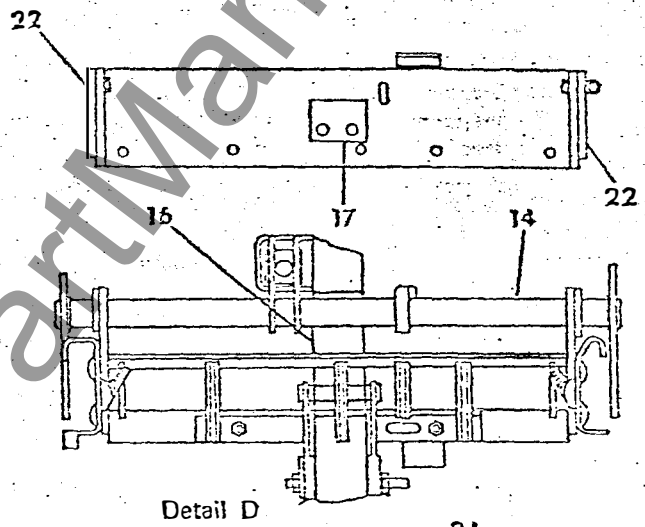
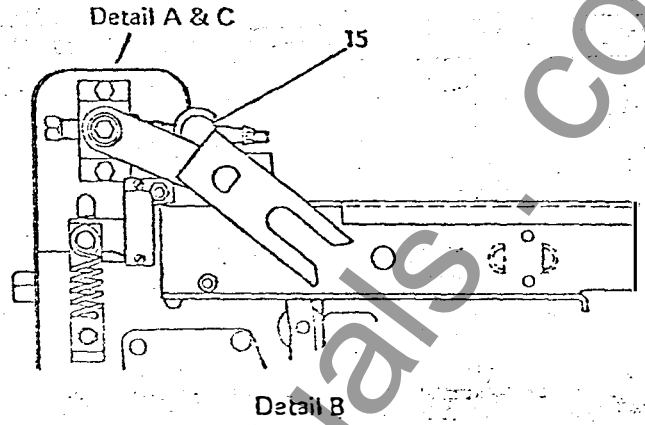
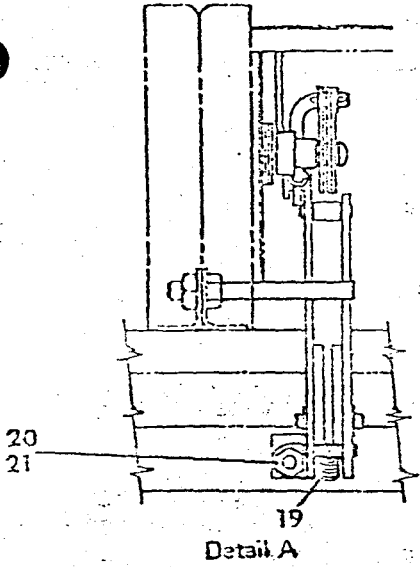
	Drawing No.	Figure	Page
Air Circuit Breaker	18-384-475-601	1	2
Operator Mechanism and Panel Assembly	18-717-776-520	2	4
Operator Mechanism Assembly	18-465-970-502	3	6

USAGE CODE TABLE

Type	Application	Operator	Top Level Assembly	Usage Code*
LA-1600	1600 AMP	Manual	18-384-475-601	A
LA-1600	1600 AMP	Electrical	18-384-475-602	B
LA-1600	1600 AMP	Electrical/Manual	18-384-475-603	C
LA-1600	1600 AMP	Manual-Fused	18-384-475-611	D
LA-1600	1600 AMP	Electrical-Fused	18-384-475-612	E
LA-1600	1600 AMP	Electrical/Manual Fused	18-384-475-613	F

* If no usage code appears in the "USAGE" column of the following parts lists, the part is used on all assemblies listed in the figure title.

www.ElectricalPartManuals.com



www.ElectricalPartManuals.com

ITEM	DESCRIPTION	PART NUMBER	USAGE	ITEM	DESCRIPTION	PART NUMBER	USAGE
1	Contact Finger Assembly	71-240-055-511		19	Spring	00-837-455-025	
2	Barrier	71-142-109-001		20	El Stop	00-633-039-210	
3	Strap	71-142-089-002		21	Set Screw	00-617-031-225	
4	Washer	71-142-107-001		22	Bearing	72-140-054-001	
5	Support (5 per Current Transformer)	71-142-108-001		→ 23	Closing Cam Assembly (Incl. Item 24 and 25)	18-657-346-515	CF
6	Cover Assembly	18-657-346-537	A	24	Cam	72-240-009-001	CF
	Cover Assembly	18-657-346-550	B	25	Needle Bearing	00-813-113-804	CF
	Cover Assembly	18-657-346-539	C	26	Closing Handle Assembly	18-657-346-549	CF
	Cover Assembly	18-657-346-545	D	27	Pin	71-240-127-021	CF
	Cover Assembly	18-657-346-560	E	28	Spring	71-141-761-001	CF
	Cover Assembly	18-657-385-517	F	29	Contact Finger	71-240-055-513	DEF
7	Barrier	71-142-088-002		30	Bracket	71-240-590-001	DEF
8	Rating Plate	15-171-083-004		31	Bracket LH	71-240-594-001	DEF
9	Arc Chute Assembly	18-657-346-533		32	Bracket RH	71-240-594-002	DEF
10	Screw	00-615-203-216		33	Strap	71-240-591-001	DEF
11	Wing Nut	00-639-121-116		34	Barrier	71-142-180-001	DEF
12	Plastic Rivet	00-671-501-050		35	Bar	71-142-308-001	DEF
13	Operator Mechanism & Panel Assembly	18-717-776-520	AD	36	Static Trip*		
	Operator Mechanism & Panel Assembly (See Figure 2)	18-381-475-503	BCEF	37	Tripping Current Transformers (120-250 AMPS)	71-240-580-501	
					(200-400 AMPS)	71-240-580-502	
					(300-400 AMPS)	71-240-530-503	
					(700-1000 AMPS)	71-240-580-504	
					(800-1000 AMPS)	71-240-580-505	
					(1600 AMPS)	71-240-530-508	
					(2000 AMPS)	71-240-530-509	
					(1600 AMPS)	71-240-530-511	
					(75/150 AMPS)	71-240-530-512	
14	Shaft Assembly	72-140-015-504		38	Ground Bar	71-141-926-002	
15	Trunnion	72-140-004-001					
16	Block	72-140-296-001					
17	Plate	72-140-287-001					
18	Arm Assembly	72-140-258-501					

* When ordering replacement, give nameplate data, type, time band if applicable (e.g. "MAX", "TNT", or "MIN" as indicated by white dot or "X").

** When ordering trip current transformers, give part number shown on tag, on original current transformer or breaker trip rating.

90%
23%

Figure 1. Air Circuit Breaker

www.ElectricalPartManuals.com

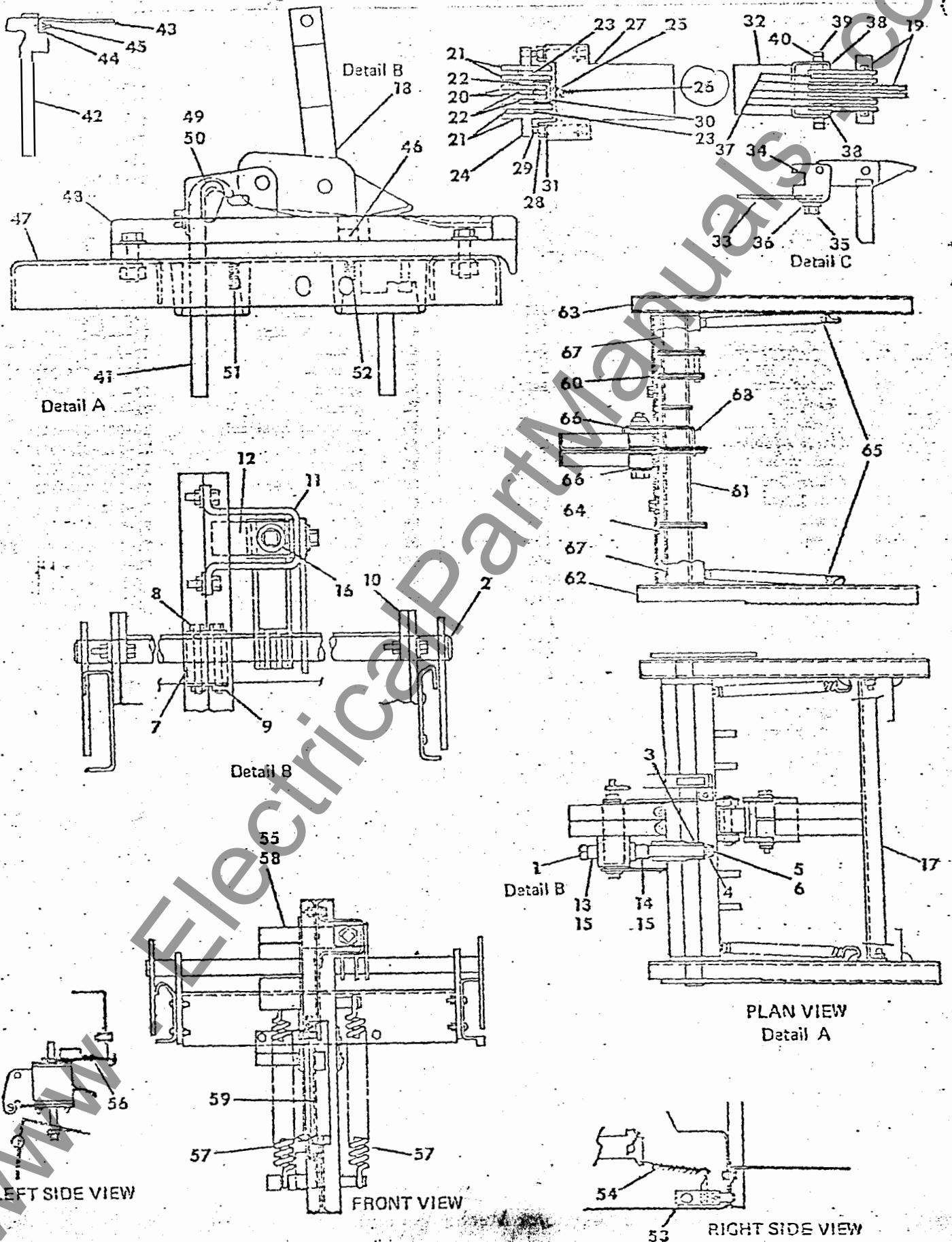


Figure 2. Operator Mechanism and Panel Assembly. (18-717-776-520 (AD))

www.ElectricalPartManuals.com

ITEM	DESCRIPTION	PART NUMBER	USAGE	ITEM	DESCRIPTION	PART NUMBER	USAGE
1	Racking Mechanism (Incl. Items 2 thru 15)	18-657-426-879		33	Connector	71-142-050-001	
2	Shaft Assembly	72-140-015-504		34	Support Assembly	71-142-172-502	
3	Trunnion	72-140-004-001		35	Cap Screw	00-611-315-373	
4	Washer	72-140-060-001		36	Lockwasher	00-655-017-026	
5	Nut	71-142-155-001		37	Spacer	71-141-822-003	
6	Socket Hd. Screw, Cup Pt.	00-617-031-214		38	Spacer	71-141-822-004	
7	Block	72-140-286-001		39	Pin	71-141-823-005	
8	Plate	72-140-237-001		40	Retaining Ring	00-673-165-037	
9	Jam Nut	00-631-171-104		41	Connector Assembly (Incl. Items 42 thru 45)	18-657-346-544	
10	Bearing	72-140-034-001		42	Connector	71-141-769-503	
11	Bracket	71-141-754-001		43	Arc Runner	71-142-053-001	
12	Trunnion	72-140-003-001		44	Lockwasher	00-655-017-022	
13	Spacer	72-140-023-001		45	Cap Screw	00-615-124-213	
14	Spacer	72-140-029-002		46	Contact Finger	71-141-373-501	
15	Spiral Pin	00-671-185-901		47	Pan (Steel)	71-440-114-001	
16	Racking Screw	72-140-030-501		48	Base (Molding)	71-440-119-001	
17	Panel Assembly (Incl. Items 18 thru 52)	18-657-346-542		49	Contact	71-141-763-001	
18	Connector and Clevis Assembly (Includes Items 19 thru 40)	18-657-346-543		50	Contact	71-141-763-002	
19	Clevis Assembly (Incl. Items 20 thru 31)	18-657-346-553		51	Spring	71-141-930-001	
20	Arcing Contact	71-141-803-501		52	Spring	71-141-976-001	
21	Main Contact	71-141-805-501		53	Interlock Assembly	18-657-346-556	
22	Spacer	71-141-822-003		54	Spring	71-141-873-001	
23	Spacer	71-141-822-004		55	Indicator	71-142-112-001	
24	Pin	71-141-921-002		56	Spring Assembly	71-142-440-502	
25	Spring	71-142-123-001		57	Spring	71-142-149-001	
26	Spring	71-142-139-001		58	Indicator	71-141-817-001	
27	Clevis	71-240-561-001		59	Link	71-142-105-003	BCEF
28	Elastic Stop Nut	00-633-025-116		60	Apron	72-140-055-501	
29	Screw	00-615-114-390		61	Operator Shaft Assy.	18-657-346-539	
30	Spacer	71-142-122-001		62	Channel LH	71-142-054-001	
31	Washer	00-651-017-135		63	Channel RH	71-142-055-002	
32	Connector Assembly (Incl. Items 33 thru 36)	18-657-346-551		64	Bumper	71-142-383-001	
				65	Spring	71-141-813-001	
				66	Bumper	71-141-829-002	
				67	Bearing	71-141-956-002	
				68	Link	71-142-111-001	

Figure 2. Operator Mechanism and Panel Assembly

www.ElectricalPartManuals.com

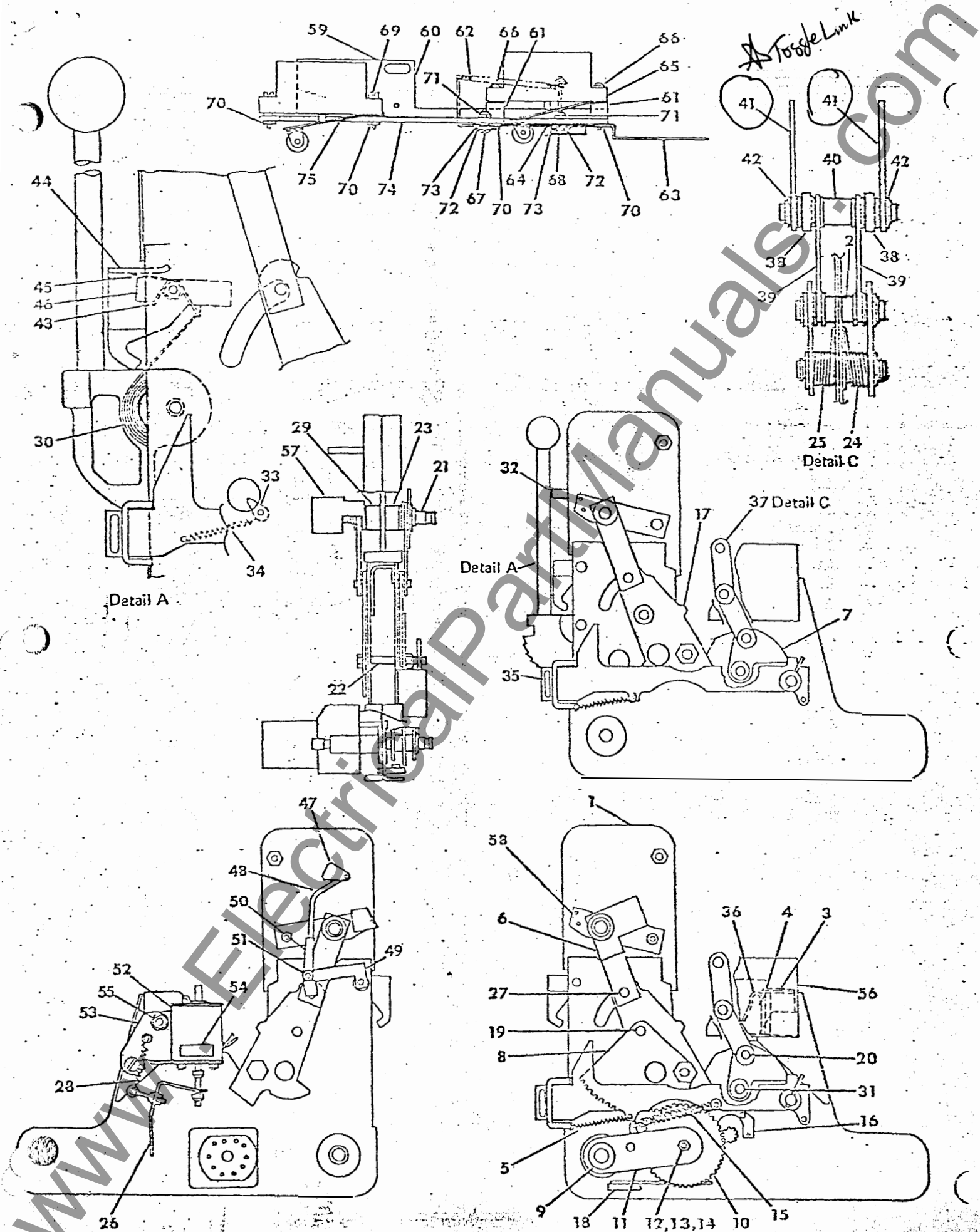


Figure 3. Operator Mechanism Assembly. (18-465-970-502, 18-465-965-511)

www.ElectricalPartManuals.com

ITEM	DESCRIPTION	PART NUMBER	USAGE	ITEM	DESCRIPTION	PART NUMBER	USAGE
1	Frame Assembly	18-657-346-540	AD	39	Roller	71-141-789-002	
		18-657-346-554	BCEF	39	Link	71-142-037-001	
2	Spacer	71-141-823-004		40	Spacer	71-141-823-004	
3	Plate	71-141-774-001		41	Link	71-142-057-002	
4	Bumper	71-141-776-002		42	Needle Bearing	00-813-119-805	
5	Spring	71-142-209-001		43	Spring	71-142-406-001	
6	Link	71-142-071-001	AD	44	Channel	71-142-407-001	
		18-657-359-553	BCEF	45	Spring	71-142-403-001	
7	Latch	71-142-070-001		46	Latch	71-142-409-002	
8	Gear Segment	72-140-323-001	BCEF	47	Lever	72-140-198-001	
9	Gear & Arm Assy. (Incl. Items 10 thru 14)	72-140-322-502	BCEF	48	Rod	72-140-140-002	
10	Gear	72-140-150-501	BCEF	49	Arm	71-142-433-001	
11	Arm	72-140-120-502	BCEF	50	Yoke End Adj.	00-691-701-900	
12	Bearing	71-141-864-001	BCEF	51	Clvsys Pin	00-957-211-900	
13	Capscrew, Hex Hd.	00-611-315-332	BCEF	52	Sealed Actuator	72-240-002-601	
14	Stover Lock Nut	15-171-063-004	BCEF	53	Bracket	71-142-384-001	
15	Spring	72-140-324-001	BCEF	54	Decal	72-140-002-001	
16	Bracket	72-140-325-001	BCEF	55	Rod	72-140-097-002	
17	Cam	71-141-782-001		56	Bracket	71-142-141-001	
18	Spring Assembly	18-657-358-523	BCEF	57	Indicator	18-657-345-546	
19	Pin	71-141-823-007		58	Arm	71-142-114-001	
20	Pin	71-240-127-019		59	Switch, Motor Control (Incl. Items 60 thru 75)	18-657-346-533	
21	Pin	71-142-082-001		60	Bracket	71-240-581-001	
22	Spacer	71-141-828-003		61	Spacer	71-100-408-003	
23	Bumper	71-142-102-001		62	Spring	71-142-049-001	
24	Spring	71-141-833-001		63	Plunger	71-142-143-001	
25	Spring	71-141-833-002		64	Spacer	71-142-150-001	
26	Arm	71-142-386-001		65	Limit Switch	00-871-333-403	
27	Roller Bearing	00-813-109-037		66	Screw	00-615-471-130	
28	Spring	71-142-049-001		67	Screw	00-615-485-220	
29	Link	71-142-071-001	BCEF	68	Screw	00-615-485-227	
30	Spring	71-141-761-001	AD	69	Screw	00-615-223-126	
31	Pin	71-141-823-002		70	Pal Nut	00-633-163-106	
32	Bumper	71-141-866-001		71	Elastic Stop Nut	00-633-125-210	
33	Pawl	72-140-082-002		72	Washer	00-651-017-914	
34	Spring	71-141-266-001		73	Washer	00-651-017-903	
35	Trip Shaft Assembly	18-657-346-532		74	Wire Assembly	18-721-436-503	
36	Kickoff Spring Assembly	18-657-346-547		75	Wire Assembly	18-721-436-507	
37	Toggle Linkage Assy. (Incl. Items 38 thru 42)	18-657-346-548					

Figure 3. Operator Mechanism Assembly

www.ElectricalPartManuals.com

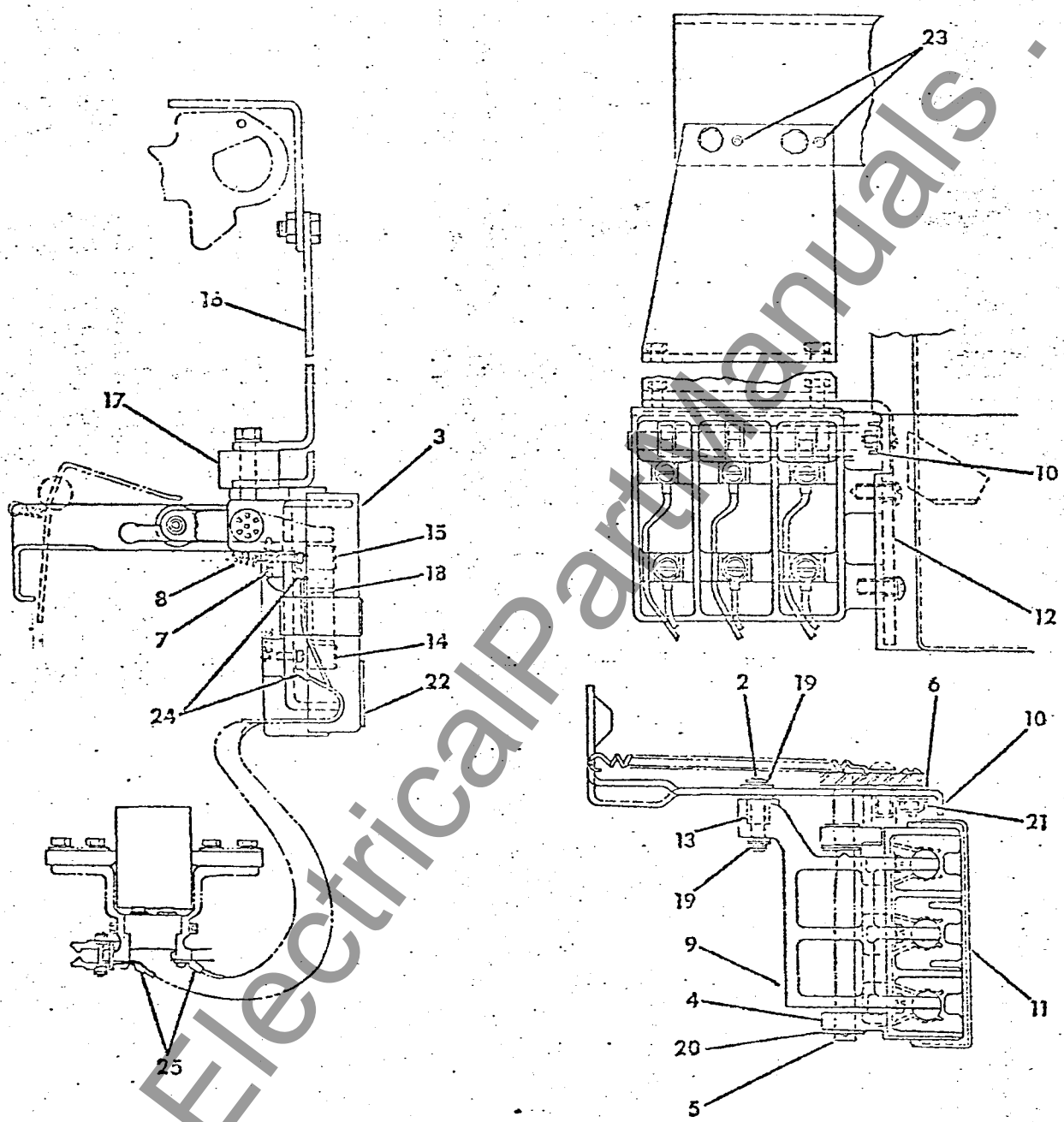


Figure 4. Trigger Fuses

www.ElectricalPartManuals.com

ITEM	DESCRIPTION	PART NUMBER	USAGE	ITEM	DESCRIPTION	PART NUMBER	USA
1	Trigger Fuse (Used with 2 Auxiliary Switches)	18-384-481-804		12	Bracket	71-142-193-001	
	Trigger Fuse (Used with 1 Auxiliary Switch)	18-384-481-305		13	Bearing, Needle	00-813-119-301	
	Trigger Fuse (Used with out Auxiliary Switches)	18-384-481-806		14	Fuse Clips, w/Stops	00-871-262-102	
2	Pin	71-240-028-005		15	Fuse Clips, w/o Stops	00-871-262-103	
3	Cover	71-240-509-001		16	Bracket	72-140-316-001	
4	Fuse Housing	71-240-600-001		17	Spacer	71-142-195-001	
5	Rod, Bakelite	71-115-468-003		18	Trigger Fuse	72-140-317-001	
6	Spacer	71-140-718-002		19	Retaining Ring	15-673-165-018	
7	Spring	71-142-049-001		20	Retaining Ring	00-673-243-007	
8	Spring	71-142-209-091		21	Elastic Stop Nut	00-633-059-103	
9	Lever	71-142-135-001		22	Label	15-171-185-001	
10	Trip Bar	72-140-313-001		23	Roll Pin	00-671-176-309	
11	Clip	71-142-192-001		24	Lug	00-851-011-094	
				25	Lug	00-851-061-094	
				26	Grommet	15-837-659-002	

Figure 4. Trigger Fuses

www.ElectricalPartManuals.com