

RENEWAL PARTS

TYPES AM-2.4/4.16-0, AM-2.4/4.16-1 AND AM-2.4/4.16-2 MAGNE-BLAST AIR CIRCUIT BREAKERS WITH TYPE MS-13 SOLENOID MECHANISM

TYPE AM-2 4/4.16KV
150/250-2

Sum # 424A 416-21

M/N 6351253ABP

MECH TYPE MS-13

1200 A

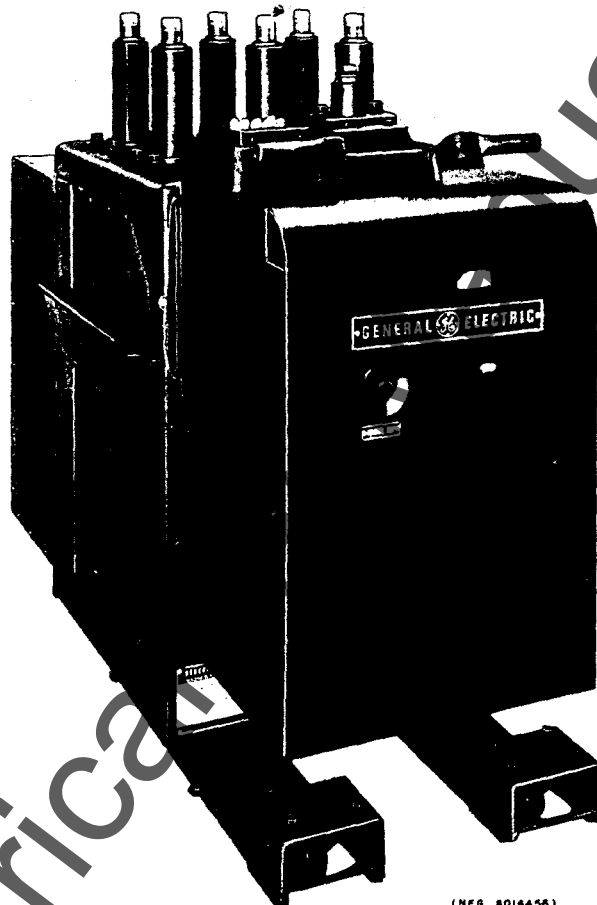
250MVA

INT. AMP 35000

MOV AMP 60000

1400LB

MFG 7/54



(NEG 8016456)

Fig. 1. Type AM-2.4/4.16-100/150-1 air circuit breaker

Note: The listed terms "right" and "left" apply when facing the solenoid mechanism end of the breaker.

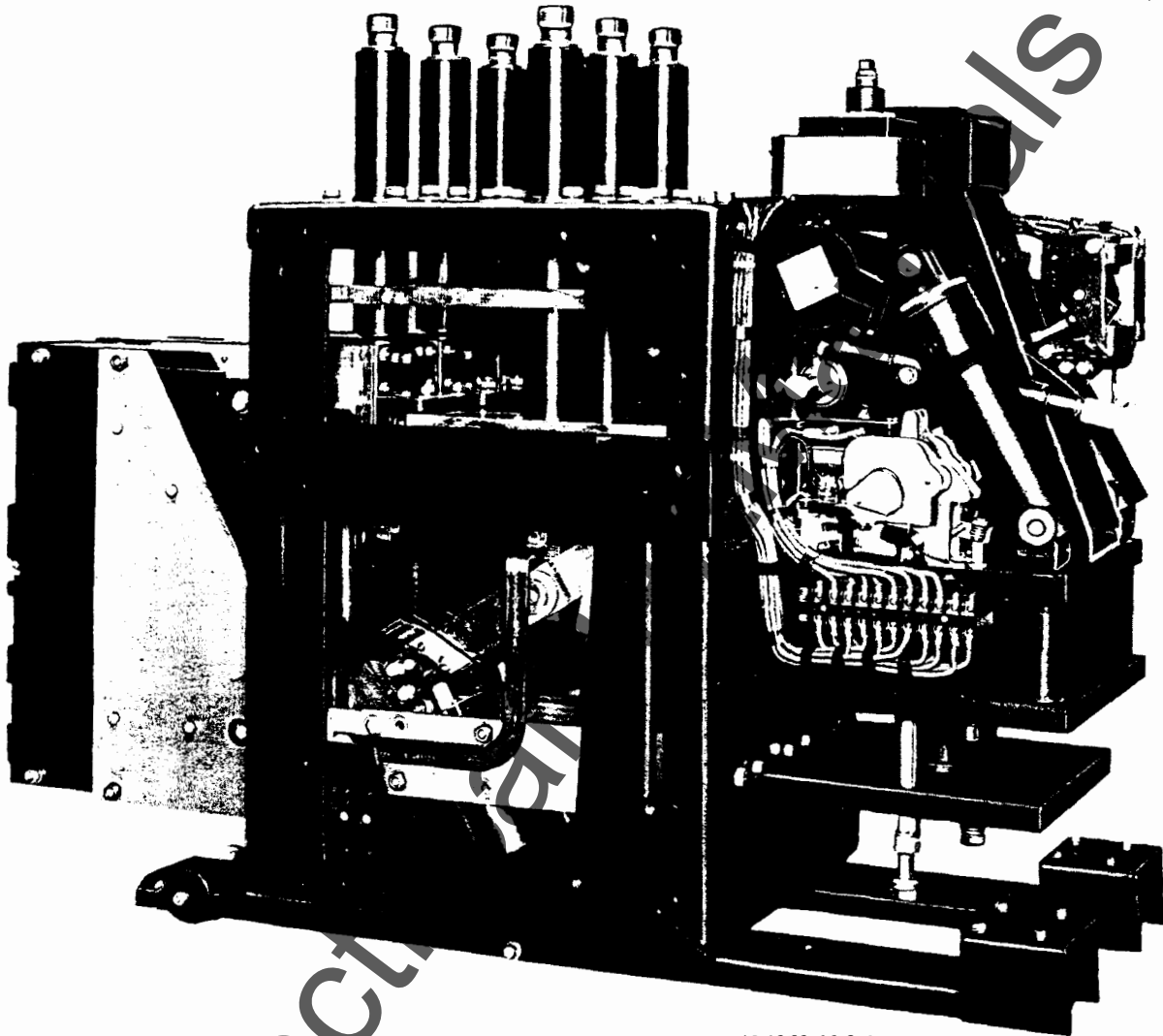
ORDERING INSTRUCTIONS

1. Always specify the complete nameplate data of both the breaker and the mechanism.
2. Specify the quantity, catalog number (if listed), reference number (if listed), and description of each part ordered, and this bulletin number.
3. Standard hardware, such as screws, bolts, nuts, washers, etc., is not listed in this bulletin. Such items should be purchased locally.
4. For prices, refer to the nearest office of the General Electric Company.

When ordering renewal parts, give quantity, catalog number, description of each item required, and complete nameplate reading.

GENERAL ELECTRIC

www.ElectricalPartManuals.com



(PHOTO 8012184)

Fig. 2. Side view of type AM-2.4/4.16-100/150-1 breaker with mechanism cover, side covers and box barrier removed

www.ElectricalPartManuals.com

TYPES "AM-2.4/4.16" MAGNE-BLAST AIR CIRCUIT BREAKERS

GEF-3873B

PARTS RECOMMENDED FOR NORMAL MAINTENANCE

In the tabulation below are listed the parts of those breakers which are usually recommended for stock for normal maintenance. Other parts are listed on the following pages.

Fig. No.	Ref. No.	Rating in MVA	Rating in AMPS	Catalog Number for Type			No. per Breaker	Description
				AM-2.4/4.16-(MVA)-0	AM-2.4/4.16-(MVA)-1	AM-2.4/4.16-(MVA)-2		
3	1	All	All	263B293P2	263B293P2	263B293P2	3	Booster cylinder
5	181	All	All	6597275P1	6597275P1	6597275P1	6	Upper runner insulation
5A	191	100/150	600/1200	236C791P8	236C791P8	236C791P8	12	Primary contact finger
5A	191	150/250	1200	236C791P8	236C791P8	236C791P8	24	Primary contact finger
5A	191	All	2000	236C791P8	236C791P8	236C791P8	24	Primary contact finger
6	212	100/150	600/1200	6591644P7	6591644P7	6591644P7	3	Primary contact mov.
6	212	100/150	600/1200	6591644P8	6591644P8	6591644P8	3	Primary contact mov.
6	212	150/250	1200	6591644P7	6591644P7	6591644P7	6	Primary contact mov.
6	212	150/250	1200	6591644P8	6591644P8	6591644P8	6	Primary contact mov.
6	212	All	2000	6591644P7	6591644P7	6591644P7	6	Primary contact mov.
6	212	All	2000	6591644P8	6591644P8	6591644P8	6	Primary contact mov.
5A	195	All	600/1200	6509787P1	6509787P1	6509787P1	12	Primary contact finger spring
5A	195	All	2000	6509787P1	6509787P1	6509787P1	24	Primary contact finger spring
6	211	All	All	6496488P3	6496488P3	6496488P3	3	Secondary arcing contact mov.
5A	194	All	All	389A616P6	6445087P1	6445087P1	3	Buffer
5A	188	100/150	600/1200	389A616G1	6557243P1	6557243P1	6	Buffer clamp
5A	188	150/250	1200	389A616G2	6557243P2	6557243P2	6	Buffer clamp
5A	188	All	2000	389A616G2	6557243P2	6557243P2	6	Buffer clamp
5A	193	All	All	6597277P1	6597277P2	6597277P2	6	Upper runner insulation (bottom)
5A	181	All	All	6597275P1	6597275P1	6597275P1	6	Upper runner insulation (top)
5A	192	All	All	6514946G2	383A903G1	383A903G1	3	Secondary arcing finger stationary
5A	187	All	All	175V232P1	175V232P1	175V232P1	3	Protector for blow-out coil
7,7A	345	All	All	6375521G2	6375521G2	6375521G2	1	Closing coil (125 VDC)
7,7A	345	All	All	6375521G1	6375521G1	6375521G1	1	Closing coil (250 V)
8,8A	402	All	All	6174582G1	6174582G1	6174582G1	1	Potential trip coil (125 VDC)
8,8A	402	All	All	6174582G2	6174582G2	6174582G2	1	Potential trip coil (250 VDC)
8,8A	402	All	All	6174582G14	6174582G14	6174582G14	1	Potential trip coil (230 V AC)
8,8A	402	All	All	6275070G1	6275070G1	6275070G1	1	Potential trip coil (24 VDC)
8,8A	402	All	All	6275070G2	6275070G2	6275070G2	1	Potential trip coil (48 VDC)
17	753	All	All	6275017G19	6275017G19	6275017G19	1	Control device coil (125 VDC)
17	753	All	All	6275017G20	6275017G20	6275017G20	1	Control device coil (250 VDC)
17	753	All	All	6275017G34	6275017G34	6275017G34	1	Control device coil (230 V AC)
16	738	All	All	6174599G2	6174599G2	6174599G2	3	Current trip coil (3 amp AC)
16	738	All	All	6174599G6	6174599G6	6174599G6	1	Capacitor trip coil (230 V AC)
15	651	All	All	6175017G20	6275017G20	6275017G20	1	UVD coil (DC)
15	651	All	All	6175017G21	6275017G33	6275017G33	1	UVD coil (AC)

www.ElectricalPartManuals.com

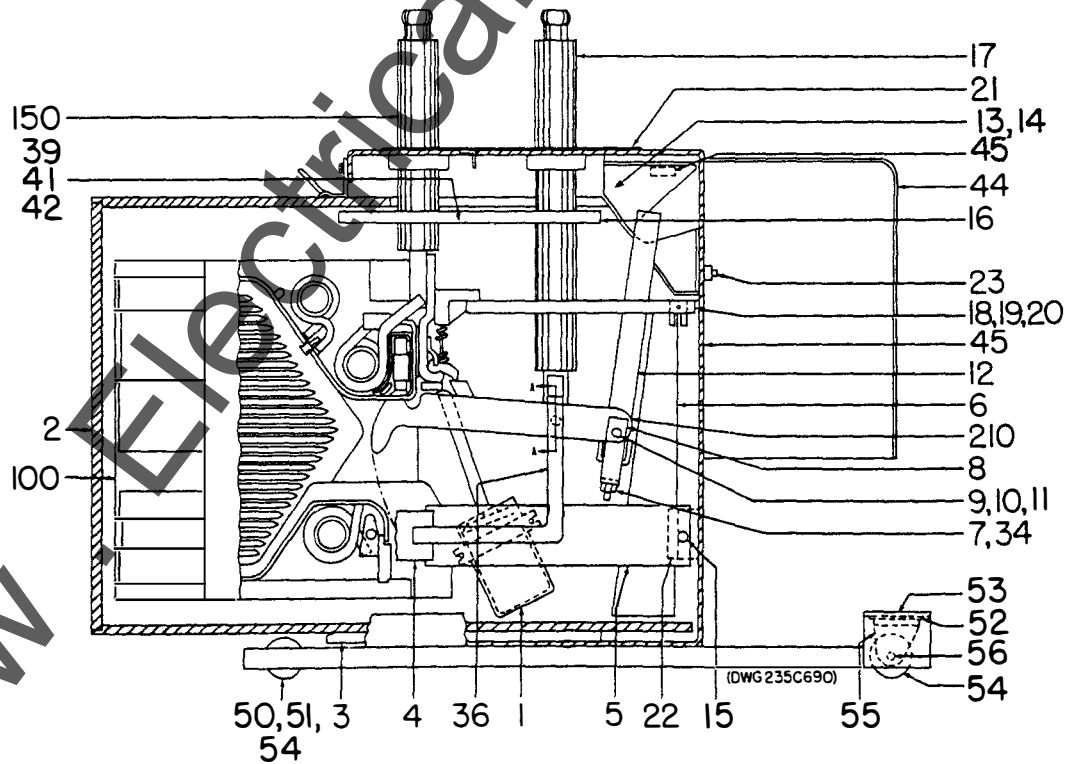
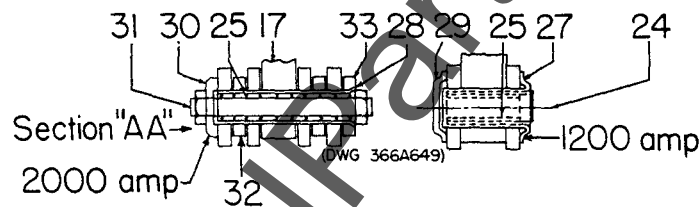
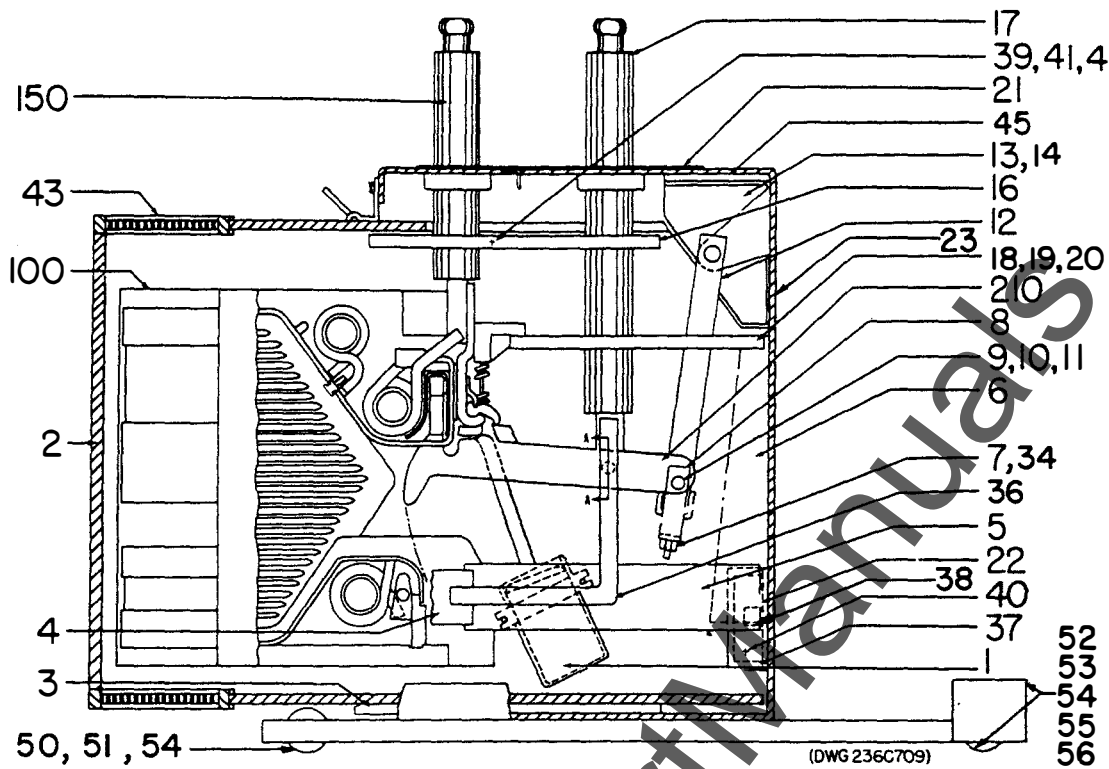


Fig. 3. Cross-sections of type AM-2.4/4.16-0 (upper) and types AM-2.4/4.16-1 and AM-2.4/4.16-2 (lower)

www.ElectricalPartManuals.com

TYPES "AM-2.4/4. 16" MAGNE-BLAST AIR CIRCUIT BREAKERS

GEF-3873B

PARTS REFERENCED IN FIG. 3

Ref. No.	Rating in MVA	Rating in AMPS	Catalog Number for Type			No. per Breaker	Description
			AM-4. 16- (MVA)-0	AM-4. 16- (MVA)-1	AM-4. 16- (MVA)-2		
1	ALL	ALL	263B293P2	263B293P2	263B293P2	3	Booster cylinder
2	ALL	150	236C789G1	236C789G1	236C789G1	1	Box barrier assembly
2	ALL	250	236C789G5	236C789G5	236C789G5	1	Box barrier assembly
3	ALL	ALL	6557065P1	6557065P1	6557065P1	2	Barrier support
4	ALL	ALL	6443723	6443723	6443723	6	Coupling for arc chute support
5	ALL	ALL	6597235P1	6597235P1	6597235P1	6	Arc chute support
6	ALL	ALL	6291394G1	9915623G1	9915623G1	3	Vertical barrier, front
7	ALL	ALL	213P2985	213P2985	213P2985	3	Jam nut
8	ALL	ALL	6442268	6442268	6442268	3	Yoke
9	ALL	ALL	6477427CAP6	6477427CAP6	6477427CAP6	3	Pin
10	ALL	ALL	6477424P6	6477424P6	6477424P6	6	Retaining ring
11	ALL	ALL	6477400P6	6477400P6	6477400P6	8	Washer
12	ALL	ALL	366A624	366A624	366A624	3	Yoke and operating rod assembly
13	ALL	ALL	6597244AB	6597244AB	6597244AB	1	Stiffener (left-hand)
14	ALL	ALL	6597244AA	6597244AA	6597244AA	1	Stiffener (right-hand)
15	ALL	ALL	*	175V504	175V504	3	Block
16	ALL	600/1200	6597237P1	175V502P1	175V502P1	6	Horizontal barrier, upper
16	ALL	2000	6597237P2	175V502P2	175V502P2	6	Horizontal barrier, upper
17	ALL	1200	236C766G2	236C766G2	236C766G2	3	Bushing (long)
17	ALL	2000	236C766G3	236C766G3	236C766G3	3	Bushing (long)
17	ALL	600	236C766G1	236C766G1	236C766G1	3	Bushing (long)
18	ALL	600/1200	6597232P1	6597232P1	6597232P1	3	Horizontal barrier (right)
18	ALL	2000	6597232P3	6597232P3	6597232P3	3	Horizontal barrier (right)
19	ALL	600/1200	6597232P2	6597232P2	6597232P2	3	Horizontal barrier (left)
19	ALL	2000	6597232P4	6597232P4	6597232P4	3	Horizontal barrier (left)
20	ALL	600/1200	374A299G3	374A299G3	374A299G3	6	Horizontal barrier (lower)
20	ALL	2000	374A299G4	374A299G4	374A299G4	6	Horizontal barrier (lower)
21	ALL	600/1200	6597229P2	6597229P2	6597229P2	4	Top plate
21	ALL	2000	6592511P1	6592511P1	6592511P1	1	Top plate
22	ALL	ALL	6597419AA	6597419AA	6597419AA	3	Support
23	ALL	ALL	6557888P1	6557888P1	6557888P1	2	Pin
24	ALL	600/1200	6591360P11	6591360P11	6591360P11	3	Screw
25	ALL	600/1200	421A239	421A239	421A239	3	Spring
25	ALL	1200/2000	421A239	421A239	421A239	3	Spring
27	100/150	600/1200	6442371	6442371	6442371	3	Bearing
28	ALL	1200/2000	6442257	6442257	6442257	3	Bearing
29	100/150	600/1200	6441617	6441617	6441617	3	Washer
30	ALL	1200/2000	6443653	6443653	6443653	3	Washer
31	ALL	1200/2000	6442258	6442258	6442258	3	Stud
32	ALL	1200/2000	6442246	6442246	6442246	6	Spacer
34	ALL	ALL	6477429P4	6477429P4	6477429P4	3	Nut
36	ALL	ALL	6597233P1	6597233P1	6597233P1	3	Connection bar
37	ALL	ALL	6597241P1	*	*	3	Spacer
38	ALL	ALL	6597422AA	*	*	3	Bolting plate for lower horizontal barrier
39	ALL	ALL	6597420P1	6597420P1	6597420P1	6	Stud
40	ALL	ALL	6477414ACP13	6477414ACP13	6477414ACP13	6	Stud
41	ALL	ALL	6443502	6443502	6443502	6	Nut
42	ALL	ALL	6597421	6597421	6597421	6	Nut
43	ALL	ALL	6514914G1	*	*	6	Muffler
44	ALL	ALL	Δ	Δ	Δ	1	Cover for mechanism
45	ALL	ALL	6557031P1	6557031P1	6557031P1	1	Interlock block
50	ALL	ALL	6076403P333	6076403P333	6076403P333	2	Axle, rear
51	ALL	ALL	6445099	6445099	6445099	4	Spacer, rear wheel
52	ALL	ALL	6445100	6445100	6445100	2	Spacer, front wheel
53	ALL	ALL	6597282AA	6597282AA	6597282AA	1	Wheel base and support, left
53A	ALL	ALL	6597282AB	6597282AB	6597282AB	1	Wheel base and support, right
54	ALL	ALL	6597295P1	6597295P1	6597295P1	4	Wheel
55	ALL	ALL	6597296P3	6597296P3	6597296P3	2	Caster fork
56	ALL	ALL	6597297P2	6597297P2	6597297P2	2	Axle, front

* Not furnished in this breaker.

Δ Order by specifying complete breaker nameplate data, Ref. No., and description.

www.ElectricalPartManuals.com

TYPES "AM-2.4/4.16" MAGNE-BLAST AIR CIRCUIT BREAKERS

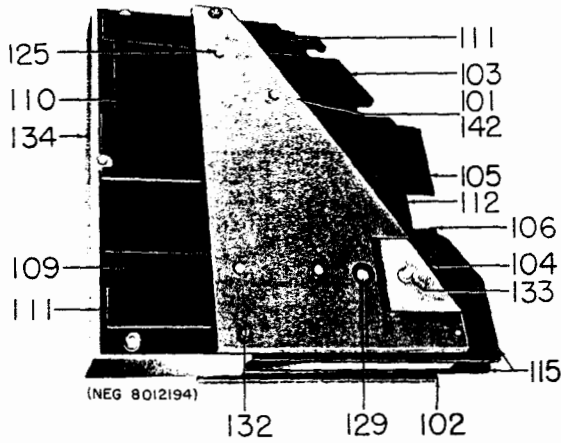


Fig. 4. Complete arc chute assembly (ref. 100)

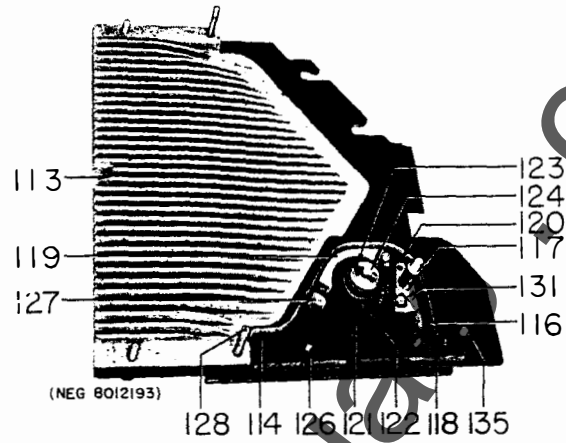


Fig. 4A. Arc chute assembly with side cover removed

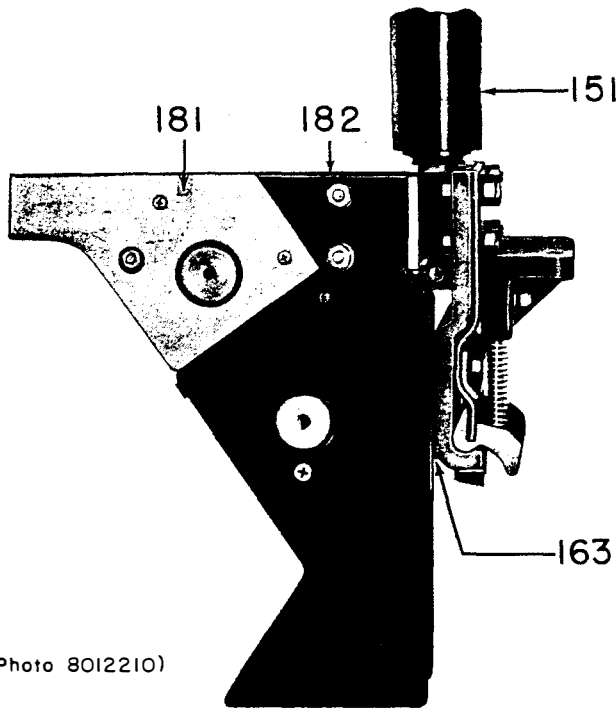
PARTS REFERENCED IN FIGS. 4 & 4A FOR ALL RATINGS

Ref. No.	Catalog Number for Type			No. per Breaker	Description
	AM-4.16-(MVA)-0	AM-4.16-(MVA)-1	AM-4.16-(MVA)-2		
100	6239973AA	215D421G1	215D421G1	3	Arc chute assembly, complete
101	6557987P1	366A666P1	366A666P1	3	Brace, left
102	6557987P2	366A666P1	366A666P1	3	Brace, right
103	6597279P1	6597279P1	6597279P1	6	Pole piece, upper
104	6597287P1	6597287P1	6597287P1	6	Pole piece, lower
105	6443725	6443725	6443725	6	Insulation for pole piece, upper, outer
106	6443726	6443726	6443726	6	Insulation for pole piece, lower, outer
*107	6597558P3	6597558P3	6597558P3	6	Insulation for pole piece, upper, inner
*108	6597558P4	6597558P4	6597558P4	6	Insulation for pole piece, lower, inner
109	6597558P2	6597558P2	6597558P2	6	Insulation for pole piece, lower
110	6597558P1	6597558P1	6597558P1	6	Insulation for pole piece, upper
111	6597557P1	6597557P1	6597557P1	12	Insulation for pole piece
112	6597278P1	6597278P1	6597278P1	6	Shield
113	264B100G3	264B100G3	264B100G3	6	Arc chute half
114	6597251AAP1	6597251AAP1	6597251AAP1	3	Arc runner
115	6591960P1	6591960P1	6591960P1	6	Lower insulation
116	6597236P1	6597236P1	6597236P1	3	Insulation
117	6591769ABP1	6591769ABP1	6591769ABP1	3	Spacer for lower arc runner
118	6597240P1	6597240P1	6597240P1	3	Spacer for lower arc runner
119	6558777P1	6558777P1	6558777P1	3	Spacer
120	6591734P14	6591734P14	6591734P14	3	Insulation
121	6592556P1	6592556P1	6592556P1	6	Support for lower coil
122	6597281AAP1	6597281AAP1	6597281AAP1	3	Coil for lower arc runner
123	6441638	6441638	6441638	3	Insulation tube for core
124	6441722P1	6441722P1	6441722P1	3	Core
125	6445072P3	6445072P3	6445072P3	24	Stud
126	210328	210328	210328	6	Screw
127	6443618	6443618	6443618	6	Screw
128	6443753P1	6443753P1	6443753P1	9	Stud
129	432249	432249	432249	6	Washer
*130	414752	414752	414752	30	Washer
131	6597401P1	6597401P1	6597401P1	6	Spring washer
132	6445050P5	6445050P5	6445050P5	12	Spacer
133	6443744	6443744	6443744	6	Spacer
134	6445050P3	6445050P3	6445050P3	3	Spacer
135	6591812P12	6445050P4	6445050P4	6	Spacer

* Not illustrated

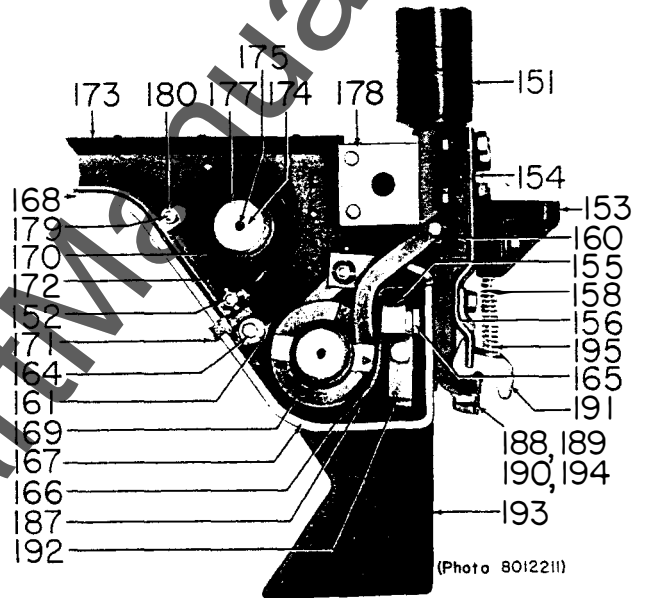
www.ElectricalPartManuals.com

TYPES "AM-24/4.16" MAGNE-BLAST AIR CIRCUIT BREAKERS



(Photo 8012210)

Fig. 5. Complete rear bushing assembly (ref. no. 150)



(Photo 8012211)

Fig. 5A. Rear bushing assembly with side cover removed

PARTS REFERENCED IN FIGS. 5 & 5A

Ref. No.	Rating in MVA	Rating in AMPS	Catalog Number for Type			No. per Breaker	Description
			AM-4.16-(MVA)-0	AM-4.16-(MVA)-1	AM-4.16-(MVA)-2		
150	100/150	600/1200	175L211G2	175L211G6	175L211G6	3	Rear bushing and arc runner assembly
150	150/250	1200	175L211G1	175L211G5	175L211G5	3	Rear bushing and arc runner assembly
150	All	2000	175L211G3	175L211G7	175L211G7	3	Rear bushing and arc runner assembly
150	100/150A	600	175L211G4	175L215G8	175L215G8	3	Rear bushing and arc runner assembly
151	All	1200	236C765G2	236C765G2	236C765G2	3	Bushing, rear
151	All	2000	236C765G3	236C765G3	236C765G3	3	Bushing, rear
151	100/150	600	236C765G1	236C765G1	236C765G1	3	Bushing, rear
152	All	All	6597401P1	6597401P1	6597401P1	12	Spring washer
153	100/150	600/1200	6592330P2	6592330P2	6592330P2	3	Spring retainer
153	150/250	All	6592331P2	6592331P2	6592331P2	3	Spring retainer
154	100/150	600/1200	6442352	6442352	6442352	3	Retainer for stationary primary contact finger
154	150/250	1200	236C791P3	236C791P3	236C791P3	3	Retainer for stationary primary contact finger
154	All	2000	236C791P3	236C791P3	236C791P3	3	Retainer for stationary primary contact finger

(Continued on page 8)

www.ElectricalPartManuals.com

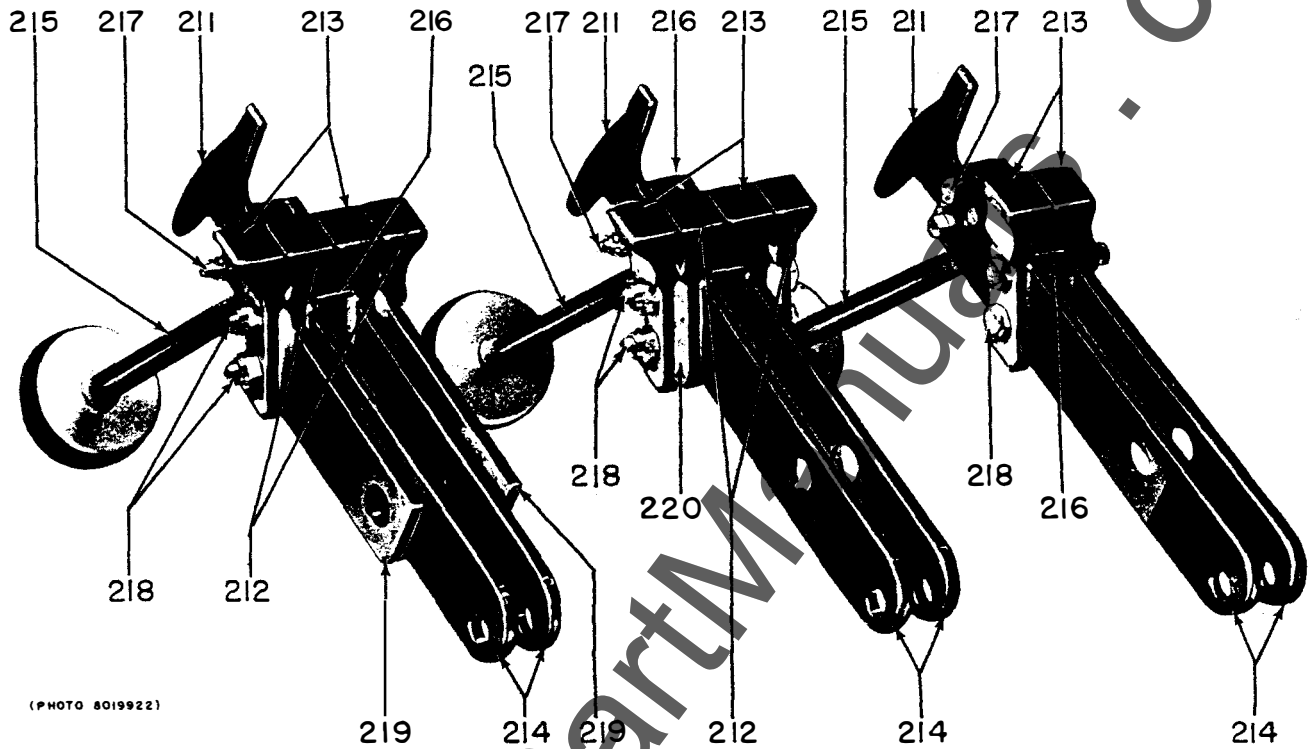
TYPES "AM-2.4/4.16" MAGNE-BLAST AIR CIRCUIT BREAKERS

PARTS REFERENCED IN FIGS. 5 & 5A (CONT'D)

Ref. No.	Rating in MVA	Rating in AMPS	Catalog Number for Type			No. per Breaker	Description
			AM-4.16-(MVA)-0	AM-4.16-(MVA)-1	AM-4.16-(MVA)-2		
155	All	All	6449307G1	6449307G1	6449307G1	3	Cage for stationary arcing contacts
156	150/250	1200	6442356	236C791P4	236C791P4	3	Clamping plate for retainer
156	All	2000	6442356	236C791P4	236C791P4	3	Clamping plate for retainer
158	100/150	600/1200	6442357	6442357	6442357	12	Guide for spring
158	150/250	1200	6442357	6442357	6442357	24	Guide for spring
158	All	2000	6442357	6442357	6442357	24	Guide for spring
160	100/150	600/1200	6557024	383A904G1	383A904G1	3	Contact support assembly
160	150/250	1200	6557024	383A904G2	383A904G2	3	Contact support assembly
160	All	2000	6557025	383A904G2	383A904G3	3	Contact support assembly
161	All	All	414752	414752	414752	6	Washer
163	All	All	6445085	6445085	6445085	3	Insulation for arc runner
164	All	All	6591812P5	6591812P5	6591812P5	12	Spacer
165	All	All	6441602	6441602	6441602	3	Nut
166	All	All	6442348	175V230	175V230	3	Barrier for primary arcing contact assembly
167	All	All	6591750AB	6591750AB	6591750AB	3	Upper arc runner, lower section
168	All	All	6591755AB	6591755AB	6591755AB	3	Upper arc runner, upper section
169	All	All	456A302G1	456A302G1	456A302G1	3	Coil #1 for upper arc runner
170	All	All	6591770AA	6591770AA	6591770AA	3	Coil #2 for upper arc runner
171	All	All	6442370P1	6442370P2	6442370P2	3	Spacer for arc runner
172	All	All	6442369	6442369	6442369	3	Filler plate for arc runner
173	All	All	6443730	6443730	6443730	3	Cover
174	All	All	6441722	6441722	6441722	6	Core
175	All	All	6477415P3	6477415P3	6477415P3	6	Groov-pin for core
*176	All	All	437230	437230	437230	12	Washer for core
177	All	All	6441638	6441638	6441638	6	Insulation tube for core
178	All	600/1200	6591737P3	6591737P3	6591737P3	3	Spacer
178	All	2000	6591737P4	6591737P4	6591737P4	3	Spacer
179	All	All	6597448P1	6597448P1	6597448P1	3	Stud
180	All	All	6477401AAP29	6477401AAP29	6477401AAP29	6	Spacer
181	All	All	6597275P1	6597275P1	6597275P1	6	Upper runner insulation (top)
182	All	All	6597276P1	366A667P1	366A667P1	6	Support for coil
187	All	All	175V232	175V232	175V232	3	Coil protector
188	100/150	600/1200	389A616G1	6557243P1	6557243P1	6	Clamp
188	150/250	1200	389A616G1	6557243P2	6557243P2	6	Clamp
188	All	2000	389A616G2	6557243P2	6557243P2	6	Clamp
189	All	All	176V939P2	176V939P2	176V939P2	12	Screw
190	All	All	6477430P3	6477430P3	6477430P3	6	Groov-pin
191	100/150	600/1200	6449308P1	6449308P1	6449308P1	12	Stationary primary contact finger
191	150/250	1200	236C791P8	236C791P8	236C791P8	24	Stationary primary contact finger
191	All	2000	236C791P8	236C791P8	236C791P8	24	Stationary primary contact finger
192	All	All	6514946G2	383A903G1	383A903G1	3	Stationary arcing contact finger assembly
193	All	All	6597277P1	6597277P2	6597277P2	6	Upper runner insulation (bottom)
194	All	All	389A616P6	6445087	6445087	3	Buffer
195	100/150	600/1200	6509787	6509787	6509787	12	Spring for stationary primary contact fingers
195	150/250	1200	6509787	6509787	6509787	24	Spring for stationary primary contact fingers
195	All	2000	6509787	6509787	6509787	24	Spring for stationary primary contact fingers

* Not Illustrated

www.ElectricalPartManuals.com



(PHOTO 8019922)

Fig. 6A. For 2000 amp breakers, all ratings

Fig. 6B. For 1200 amp, 150/250 MVA ratings

Fig. 6C. For 600 and 1200 amp, 100/150 MVA ratings

PARTS REFERENCED IN FIGS. 6A, 6B & 6C

Ref. No.	Rating in MVA	Rating in AMPS	Catalog Number for Type			No. per Breaker	Description
			AM-4.16-(MVA)-0	AM-4.16-(MVA)-1	AM-4.16-(MVA)-2		
210	100/150	600;1200	236C792G20	236C792G20	236C792G20	3	Movable contact arm assembly
210	150/250	1200	236C792G21	236C792G21	236C792G21	3	Movable contact arm assembly
210	All	2000	236C792G22	236C792G22	236C792G22	3	Movable contact arm assembly
211	All	All	6496488P3	6496488P3	6496488P3	3	Movable arcing contact
212	100/150	600;1200	6591644P7	6591644P7	6591644P7	3	Movable primary contact
212	150/250	1200	6591644P7	6591644P7	6591644P7	6	Movable primary contact
212	All	2000	6591644P7	6591644P7	6591644P7	6	Movable primary contact
213	100/150	600;1200	6591644P8	6591644P8	6591644P8	3	Movable primary contact
213	150/250	1200	6591644P8	6591644P8	6591644P8	6	Movable primary contact
213	All	2000	6591644P8	6591644P8	6591644P8	6	Movable primary contact
214	All	All	258C666P7	258C666P7	258C666P7	6	Contact arm
215	All	All	236C992G19	236C992G19	236C992G19	3	Tube and piston assembly
216	All	All	6442251P2	6442251P2	6442251P2	3	Spacer
217	All	All	6477412AAP21	6477412AAP21	6477412AAP21	6	Screw
218	100/150	600;1200	6477412AAP17	6477412AAP17	6477412AAP17	12	Screw
218	150/250	1200	6477412ABP8	6477412ABP8	6477412ABP8	12	Screw
218	All	2000	6477412ABP7	6477412ABP7	6477412ABP7	12	Screw
219	All	2000	6592316P2	6592316P2	6592316P2	6	Contact arm
220	All	1200	†	175V516	175V516	6	Spacer

† Not furnished in this breaker.

www.ElectricalPartManuals.com

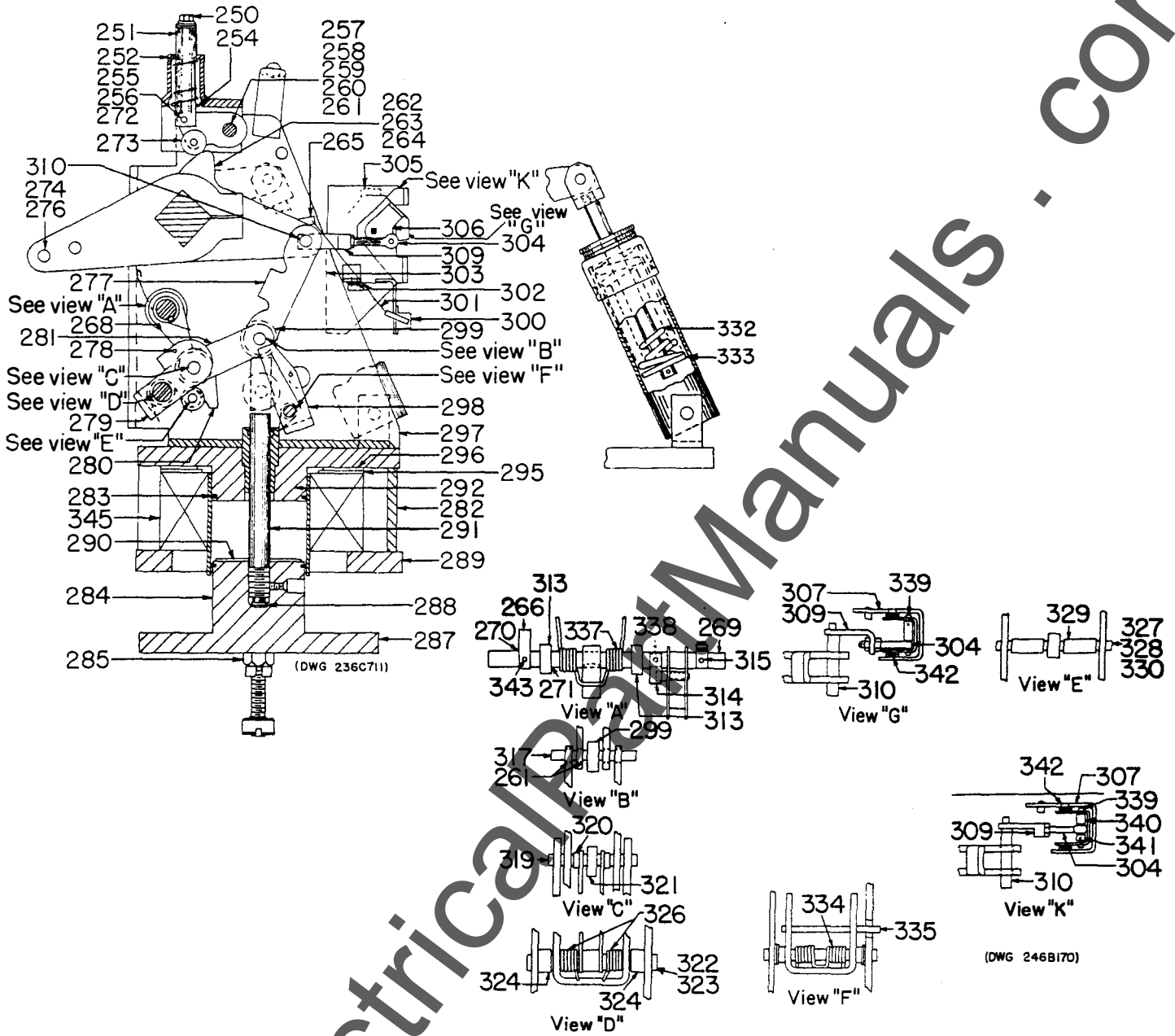


Fig. 7. Cross section of the type MS-13 mechanism of the type AM-2.4/4.16-0 breakers

PARTS REFERENCED IN FIGS. 7 & 7A; ALL RATINGS

Ref. No.	Catalog Number for Type			No. per Mechanism	Description
	AM-4.16-(MVA)-0	AM-4.16-(MVA)-1	AM-4.16-(MVA)-2		
250	6443713	6443713	6443713	1	Screw
251	6442255P1	6442255P1	6442255P1	1	Plunger for interlock
252	6597271AA	264B133G1	264B133G1	1	Bracket for interlock
253	6509728	6509728	6509728	1	Spring for interlock
254	6443715	6443715	6443715	1	Washer
255	6477424P4	6477424P4	6477424P4	9	Retaining ring
256	6477400P18	6477400P18	6477400P18	13	Washer
257	6477427JAP4	6477427JAP4	6477427JAP4	1	Pin
258	6477401CAP30	6477401CAP30	6477401CAP30	3	Spacer
259	6477400P6	6477400P6	6477400P6	40	Washer
260	6597228P1	6597228P1	6597228P1	2	Crank

www.ElectricalPartManuals.com

TYPES "AM-2.4/4.16" MAGNE-BLAST AIR CIRCUIT BREAKERS

GEF-3873B

PARTS REFERENCED IN FIGS. 7 & 7A; ALL RATINGS (CONT'D)

Ref. No.	Catalog Number for Type			No. per Mechanism	Description
	AM-4. 16-(MVA)-0	AM-4. 16-(MVA)-1	AM-4. 16-(MVA)-2		
261	6370566P55	6370566P55	6370566P55	14	Bushing
262	6591715P1	6591715P1	6591715P1	2	Crank
263	6370566P59	6370566P59	6370566P59	2	Bushing
264	6597454P1	†	†	2	Nut
264	†	258C609P7	258C609P7	4	Nut
265	6597455P1	6597455P1	6597455P1	1	Operating arm
266	6591706P1	6591706P1	6591706P1	1	Stop bar
267	6477412AAP22	6477412AAP22	6477412AAP22	5	Screw
268	258C608P7	258C608P7	258C608P7	1	Latch
269	6591707P1	6591707P1	6591707P1	1	Shaft for latch
270	6477424P29	6477424P29	6477424P29	5	Retaining ring
271	6477400P8	6477400P8	6477400P8	20	Washer
272	6477427AAP9	6477427AAP9	6477427AAP9	2	Pin
273	6443714	6443714	6443714	1	Roller
274	6477427CAP6	6477427CAP6	6477427CAP6	1	Pin
275	6477427CAP1	6477427CAP1	6477427CAP1	2	Pin
276	6477424P6	6477424P6	6477424P6	18	Retaining ring
277	6591636P1	6591636P1	6591636P1	1	Link
278	6445063	6445063	6445063	1	Pin
279	6591711P1	6591711P1	6591711P1	1	Link
280	6557829AAP1	6591953P1	6591953P1	1	Latch guide
281	6442285	6442285	6442285	2	Link
282	6591361P1	6591361P1	6591361P1	1	Solenoid pot
283	6591632P1	6591632P1	6591632P1	2	Piston ring
284	6591630P1	6591630P1	6591630P1	1	Armature
285	6591388P20	6591388P20	6591388P20	2	Linking plate
287	6441611P1	6441611P1	6441611P1	1	Plate for armature
288	6370572P9	6370572P9	6370572P9	8	Washer
289	6441635P3	6441635P3	6441635P3	1	Plate
290	6477879P7	6477879P7	6477879P7	1	Washer
291	6442228P1	6442228P1	6442228P1	1	Plunger
292	6557287G1	6557287G1	6557287G1	1	Pole piece and guide
293	6370567P55	6370567P55	6370567P55	3	Bushing
294	6477424P37	6477424P37	6477424P37	1	Retaining ring
295	374A208P1	383A933P1	383A933P1	1	Shim
296	374A208P1	383A933P2	383A933P2	1	Shim
297	6591640P1	6591640P1	6591640P1	1	Bottom plate
298	258C609P1	258C609P1	258C609P1	1	Prop
299	258C609P5	258C609P5	258C609P5	1	Roller
300	6192382ABP1	6192382ABP1	6192382ABP1	1	Operation counter
301	6551742P1	6551742P1	6551742P1	1	Spring for operation counter
302	6477412ABP2	6477412ABP2	6477412ABP2	2	Screw
303	6477412ABP1	6477412ABP1	6477412ABP1	2	Screw
304	6442374	6442374	6442374	1	Eye bolt
305	415A489G1	415A489G1	415A489G1	1	Auxiliary switch
306	6592337P1	6592337P1	6592337P1	1	Crank for auxiliary switch
307	6557286	6557286	6557286	1	Support and pin for auxiliary switch
309	6443707	174V392	174V392	1	Coupling
310	6443680	6443680	6443680	1	Pin
311	6557053P1	6557053P1	6557053P1	1	Handle, right
312	6557053P2	6557053P2	6557053P2	1	Handle, left
313	414A111P1	414A111P1	414A111P1	2	Ball bearing
314	6443686	6443686	6443686	1	Bar for current trip
315	6597225P1	6597225P1	6597225P1	1	Operating bar for cut-off switch
316	6477424P3	6477424P3	6477424P3	8	Retaining ring
317	6442227	6442227	6442227	1	Pin for prop
318	6370566P75	6370566P75	6370566P75	1	Bushing

† Not furnished in this breaker.

www.ElectricalPartManuals.com

TYPES "AM-2.4/4.16" MAGNE-BLAST AIR CIRCUIT BREAKERS

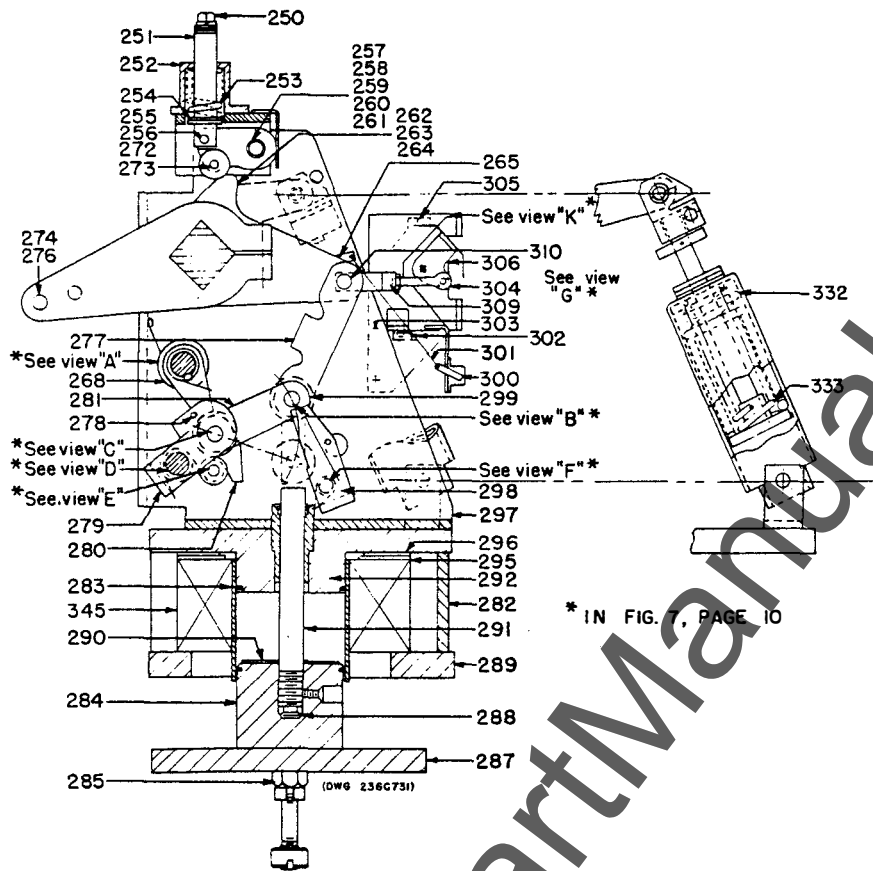


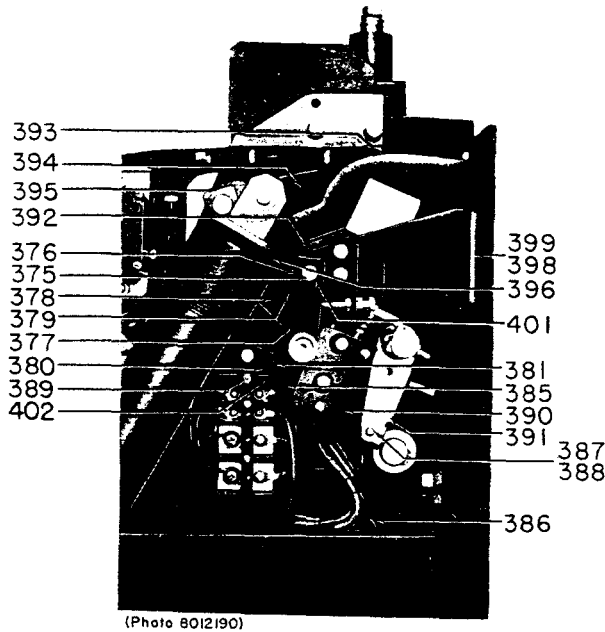
Fig. 7A. Cross section of the type MS-13 mechanism for the types AM-2.4/4.16-1 and -2 breakers

PARTS REFERENCED IN FIGS. 7 & 7A; ALL RATINGS (CONT'D)

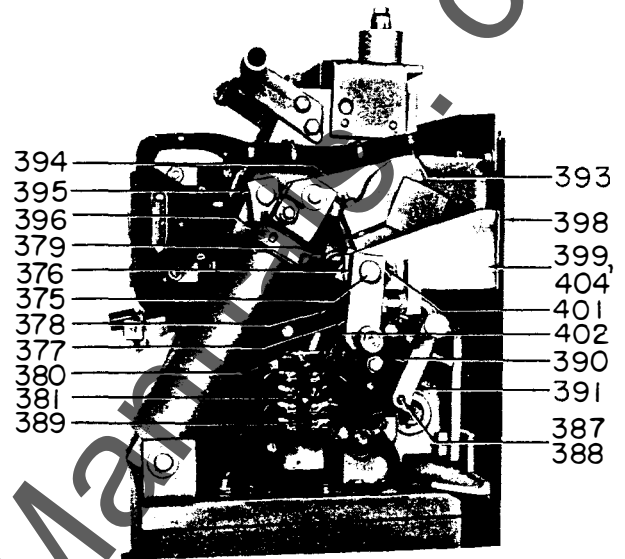
Ref. No.	Catalog Number for Type			No. per Mechanism	Description
	AM-4. 16- (MVA)-0	AM-4. 16- (MVA)-1	AM-4. 16- (MVA)-2		
319	6477427CAP7	6477427CAP7	6477427CAP7	1	Pin
320	6477401CAP29	6477401CAP29	6477401CAP29	2	Spacer
321	6477418BAP5	6477418BAP5	6477418BAP5	1	Needle bearing
322	6477427EAP9	6477427EAP9	6477427EAP9	1	Pin
323	6477424P9	6477424P9	6477424P9	3	Retaining ring
324	6477401DAP32	6477401DAP32	6477401DAP32	2	Spacer
326	6509799	6509799	6509799	2	Spring
327	6477427BAP11	6477427BAP11	6477427BAP11	1	Pin
328	6477424P5	6477424P5	6477424P5	8	Retaining ring
329	6477401CAP2	6477401CAP2	6477401CAP2	2	Spacer
330	6477400P5	6477400P5	6477400P5	10	Washer
331	258C609P6	258C609P6	258C609P6	1	Roller
332	369A468	369A468	369A468	1	Spring, inner
333	369A411	369A411	369A411	1	Spring, outer
334	6477097	6477097	6477097	1	Spring for prop
335	258C609P8	258C609P8	258C609P8	1	Pin
336	6477414ACP23	6477414ACP23	6477414ACP23	2	Stud
337	421A256P1	421A256P1	421A256P1	1	Checking spring for latch
338	6445071	6445071	6445071	1	Spacer
339	6442367	6442367	6442367	1	Pin
340	175V268	175V268	175V268	1	Spacer
341	6442366	†	†	1	Spacer
342	6244347P1	6244347P1	6244347P1	1	Bearing
343	6477412AAP22	6477412AAP22	6477412AAP22	1	Screw for operating bar
345	6375521G2	6375521G2	6375521G2	1	Closing coil (125 V d-c)
345	6375521G1	6375521G1	6375521G1	1	Closing coil (250 V d-c)

† Not furnished in these breakers.

www.ElectricalPartManuals.com



(Photo 8012190)



(Photo 8020184)

Fig. 8. Right side view of type MS-13 mechanism for type AM-4.16-0 breakers

Fig. 8A. Right side view of types MS-13 mechanism for the types AM-4.16-1 and -2 breakers

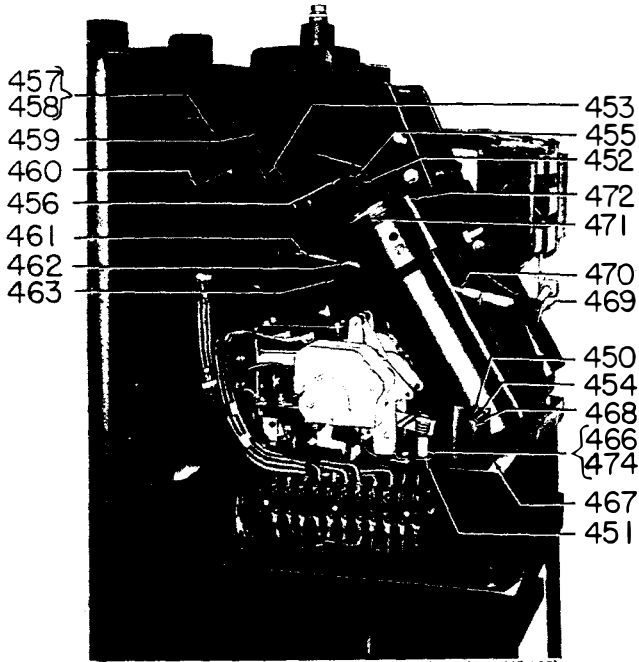
PARTS REFERENCED IN FIGS. 8 & 8A; ALL RATINGS

Ref. No.	Catalog Number for Type			No. per Mechanism	Description
	AM-4.16-(MVA)-0	AM-4.16-(MVA)-1	AM-4.16-(MVA)-2		
375	6557063P2	374A221P2	374A221P2	1	Shaft for interlock
376	6477400P7	6477400P7	6477400P7	3	Washer
377	6557285	384A331G1	384A331G1	1	Crank assembly for interlock
378	6443676	374A218P1	374A218P1	1	Link
379	6445137	374A216P1	374A216P1	1	Crank
380	6442232	6442232	6442232	2	Support for trip coil
381	6477417AAP4	6477417AAP4	6477417AAP4	2	Washer
385	6597226P1	†	†	1	Bracket
386	6445059	6445059	6445059	1	Insulation tubing
387	6477400P3	6477400P3	6477400P3	3	Washer
388	6477402CAP3	6477402CAP3	6477402CAP3	1	Pin
389	6442234	6442234	6442234	1	Armature
390	6353582G1	6353582G1	6353582G1	1	Checking switch for latch
391	6591639P1	6591639P1	6591639P1	1	Trip crank
392	374A224G1	374A224G1	374A224G1	1	Bracket and stop assembly
393	6597451P1	6597451P1	236C769P7	1	Guard
394	6443678	6591700P1	6591700P1	1	Crank
395	374A215P1	374A215P1	374A215P1	1	Crank
396	414A109P2	414A109P2	414A109P2	2	Buffer
398	6557889P4	6557889P4	6557889P4	2	Shim
399	6557889P5	6557889P5	6557889P5	1	Shim
401	6477424P5	6477424P5	6477424P5	9	Retaining ring
402	6174582G1	6174582G1	6174582G1	1	Potential trip coil (125 V d-c)
402	6174582G2	6174582G2	6174582G2	1	Potential trip coil (250 V d-c)
402	6174582G14	6174582G14	6174582G14	1	Potential trip coil (230 V a-c)
402	6275070G1	6275070G1	6275070G1	1	Potential trip coil (24 V d-c)
402	6275070G2	6275070G2	6275070G2	1	Potential trip coil (48 V d-c)

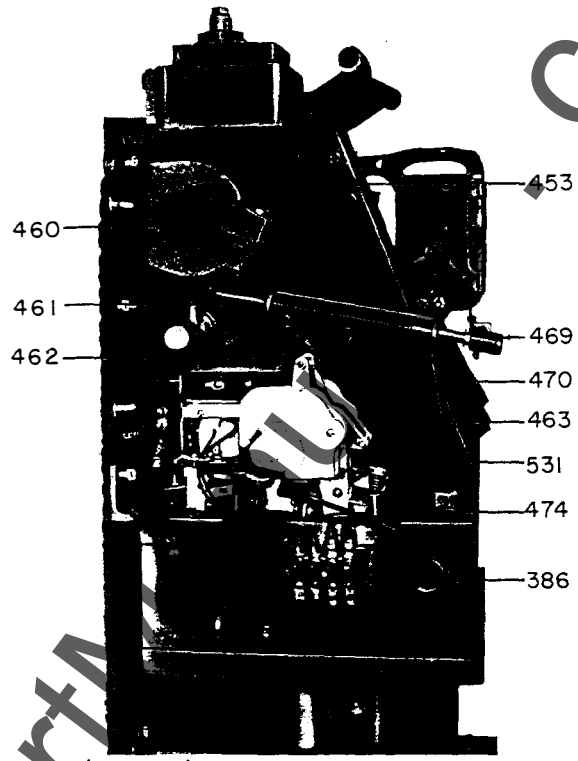
† Not furnished in this mechanism.

www.ElectricalPartManuals.com

com



(PHOTO 8012469)



(Photo 8020181)

Fig. 9. Left side view of types MS-13 mechanism for the types AM-4.16-0 and -1 breakers

Fig. 9A. Left side view of type MS-13 mechanism for the type AM-4.16-2 breaker

PARTS REFERENCED IN FIGS. 9 & 9A; ALL RATINGS

Ref. No.	Catalog Number for Type			No. per Mechanism	Description
	AM-4.16-(MVA)-0	AM-4.16-(MVA)-1	AM-4.16-(MVA)-2		
450	6477400P6	6477400P6	6477400P6	40	Washer
451	6477424P5	6477424P5	6477424P5	9	Retaining ring
452	6477400P5	6477400P5	6477400P5	10	Washer
453	6591635P2	6591635P2	6591635P2	6	Crank
454	6477424P6	6477424P6	6477424P6	18	Retaining ring
455	6477427CAP1	6477427CAP1	6477427CAP1	2	Pin
456	6591700P1	6591700P1	6591700P1	2	Crank
457	6597452P1	6597452P1	6597452P1	1	Cleat
458	6557103P1	6557103P1	6557103P1	1	Protector
459	6442241	6442241	6442241	2	Spacer
460	6443518P2	6443518P2	6443518P2	1	Shaft
461	6477401AAP36	6477401AAP36	6477401AAP36	2	Spacer
462	6509752	6509752	6509752	1	Spring for hand trip
463	6591705P1	6591705P1	6591705P1	1	Bracket
466	6442372P3	174V393P1	174V393P1	1	Rod
467	6477430P1	6477430P1	6477430P1	4	Groov-pin
468	6477427CAP8	6477427CAP20	6477427CAP20	1	Pin
469	6442274	6442274	6442274	1	Knob
470	6477414ADP4	6477414ADP4	6477414ADP4	1	Stud
471	6477417AAP7	6477417AAP7	6477417AAP7	2	Washer
472	6477879P6	414A109P2	414A109P2	6	Buffer
474	174V394P1	174V394P1	174V394P1	1	Tube

www.ElectricalPartManuals.com

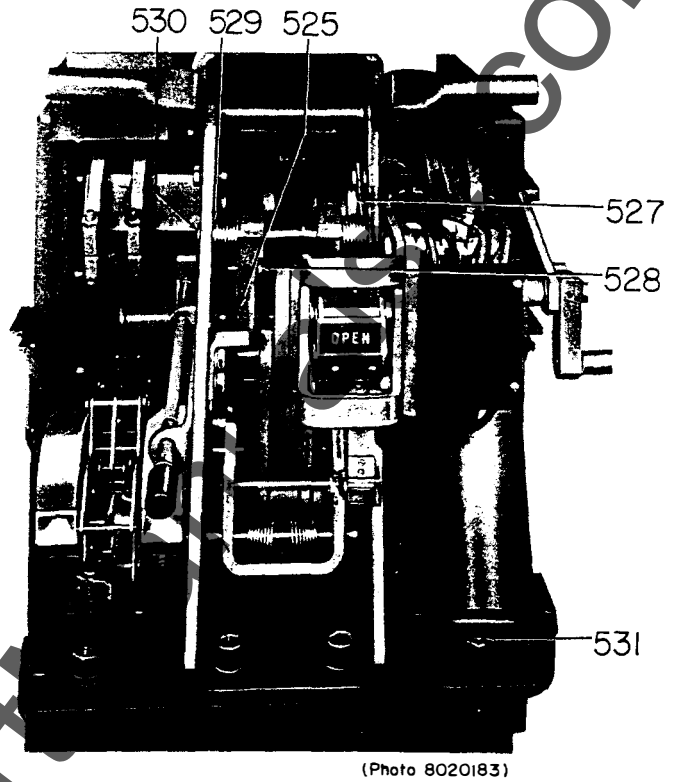
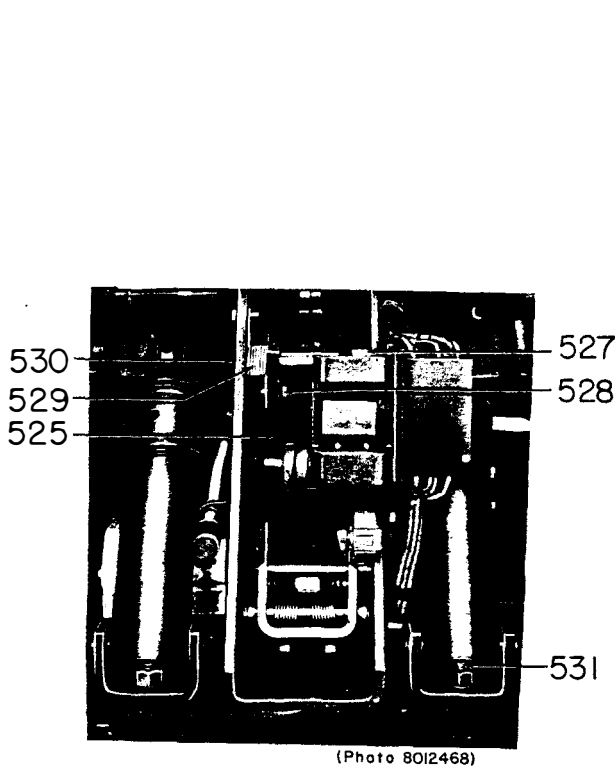


Fig. 10. Front view of type MS-13 mechanism for types AM-4.16-0 and -1 breakers

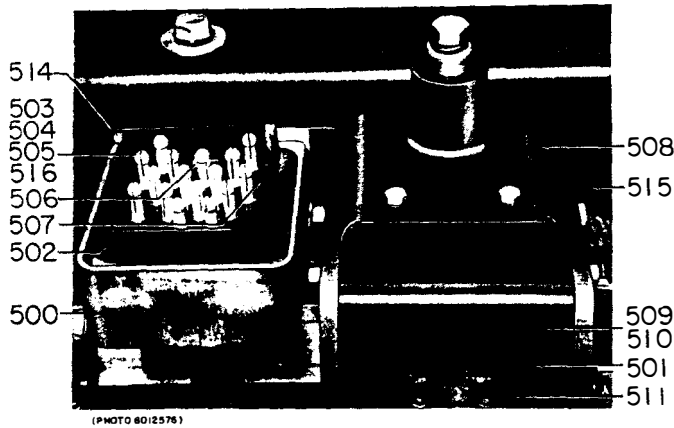
Fig. 10A. Front view of type MS-13 mechanism for the type AM-4.16-2 breaker

PARTS REFERENCED IN FIGS. 10 & 10A; ALL RATINGS

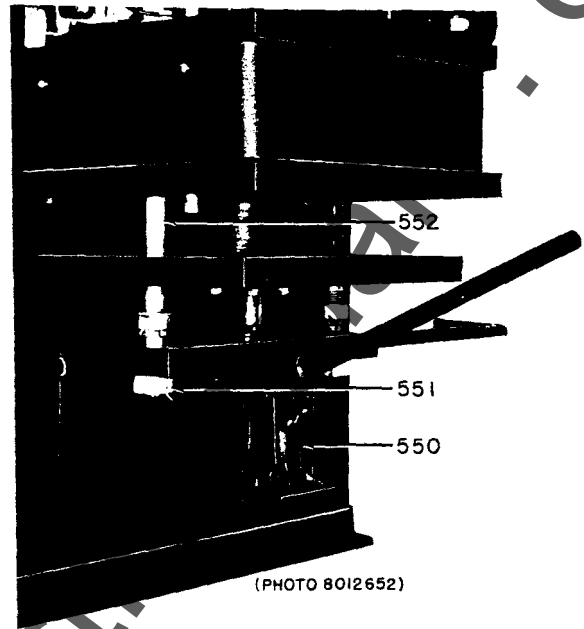
Ref. No.	Catalog Number for Type			No. per Mechanism	Description
	AM-4.16-(MVA)-0	AM-4.16-(MVA)-1	AM-4.16-(MVA)-2		
525	6443674	374A217P1	374A217P1	2	Prop
527	6477401DAP11	6477401DAP11	6477401DAP11	2	Spacer
528	383A946P1	383A946P1	383A946P1	1	Screw
529	6551734	6551734	6551734	1	Spring
530	6597224P2	374A220P1	374A220P1	1	Shaft for prop
531	6477414ACP24	6477414ACP24	6477414ACP24	2	Stud

www.ElectricalPart.com

www.ElectricalPartManuals.com



(PHOTO 8012576)



(PHOTO 8012652)

Fig. 11. Secondary disconnecting device and mechanism parts, for all types

Fig. 12. Maintenance closing device — all types

Ref. No.	Catalog Number for Type			No. per Mechanism	Description
	AM-4. 16-(MVA)-0	AM-4. 16-(MVA)-1	AM-4. 16-(MVA)-2		

PARTS REFERENCED IN FIG. 11; ALL RATINGS

500	264B162G1	264B162G1	264B162G1	1	Secondary disc. device, complete: 16-point
500	264B173G2	264B173G2	264B173G2	2	Secondary disc. device, complete: 7-point
501	6442244	6442244	6442244	4	Shim
502	6597268AA	6597268AA	6597268AA	1	Shield
503	6319964P2	6319964P2	6319964P2	16	Plug
504	366A234P3	366A234P2	366A234P2	16	Nut for plug
505	848768P1	848768P1	848768P1	16	Lock washer for plug
506	6443717	6443717	6443717	3	Stud
507	6505244P1	6048758	6048758	1	Socket
508	6597206P1	6597206P1	6597206P1	1	Cover
509	6442239P2	6442239P2	6442239P2	2	Bearing
510	6442238	6442238	6442238	2	Bushing
511	6442243	6442243	6442243	2	Spacer
514	6557827P1	6557827P1	6557827P1	4	Shim
515	366A673P1	366A673P1	366A673P1	1	Wiring trough
516	366A234P1	366A234P1	366A234P1	4	Contact nut

PARTS REFERENCED IN FIG. 12; ALL RATINGS

550	258C669G1	258C669G1	258C669G1	1	Maintenance closing device
551	6443758	6443758	6443758	2	Nut
552	6443757	6443757	6443757	2	Stud

www.ElectricalPartManuals.com

TYPES "AM-2.4/4.16" MAGNE-BLAST AIR CIRCUIT BREAKERS

GEF-3873B

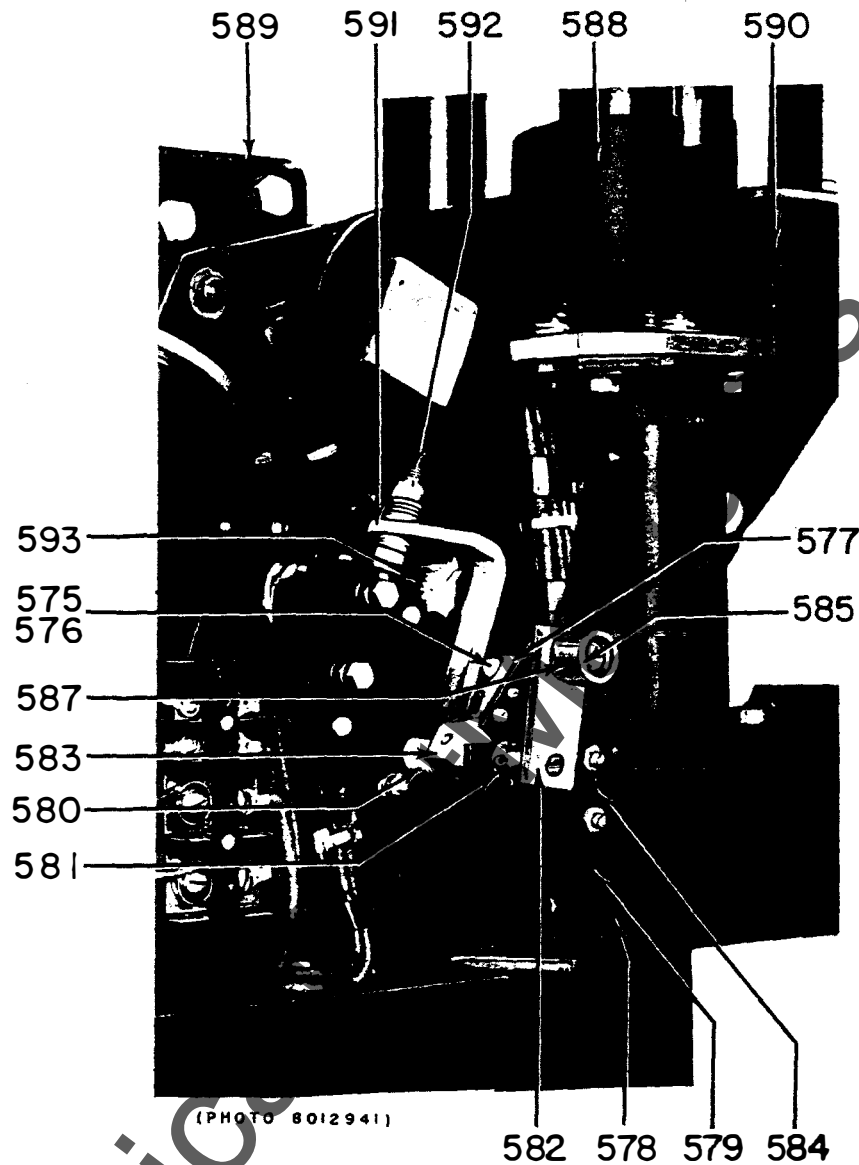
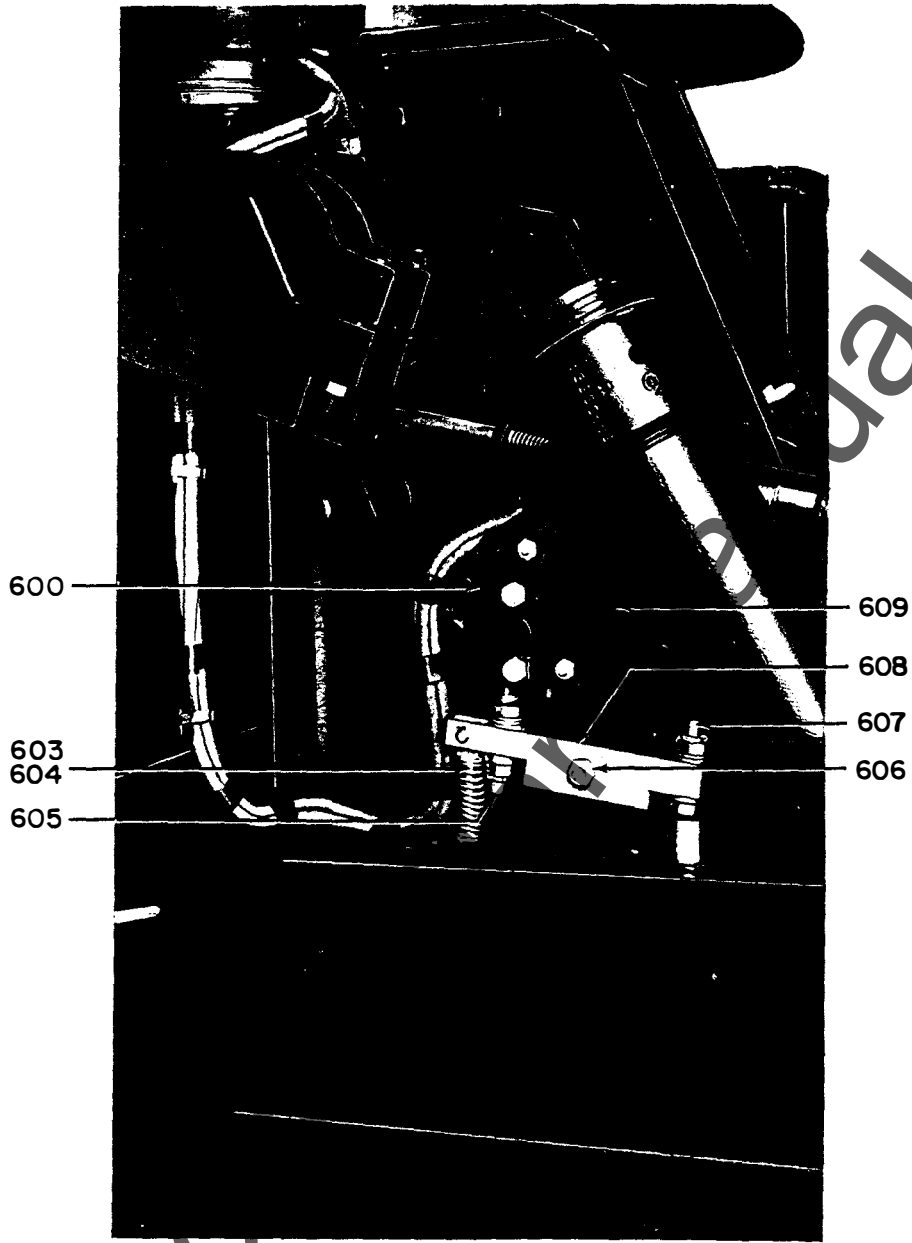


Fig. 13. Crank assembly for all mechanisms

PARTS REFERENCED IN FIG. 13; ALL RATINGS

Ref. No.	Catalog Number for Type			No. per Mechanism	Description
	AM-4.16-(MVA)-0	AM-4.16-(MVA)-1	AM-4.16-(MVA)-2		
575	6445067	6445067	6445067	1	Trip bolt
576	6077731P2	6077731P2	6077731P2	1	Nut
577	175V222	175V222	175V222	1	Stop
578	6557889P3	6557889P3	6557889P3	2	Shim
579	6557055P1	6557055P1	6557055P1	1	Bracket
580	6509729	6509729	6509729	1	Spring
581	6477400P4	6477400P18	6477400P18	2	Washer
582	6557057	6557057	6557057	1	Shaft assembly
583	6597273AA	6597273AA	6597273AA	1	Spring arm
584	6597211P1	6597211P1	6597211P1	1	Stop
585	6442360P4	6442360P4	6442360P4	1	Pin for roller
586	6477400P3	6477400P3	6477400P3	1	Washer
587	6442362P4	6442362P4	6442362P4	1	Roller
588	6123179G3	6123179G3	6123179G3	2	Housing for secondary coupler
589	6445133	6445133	6445133	1	Bridge
590	6445125	6445125	6445125	2	Shim
591	6557116P1	6557116P1	6557116P1	1	Operating lever for switch
592	6477412AAP13	6477412AAP13	6477412AAP13	1	Screw
593	6477412AAP22	6477412AAP22	6477412AAP22	1	Screw

www.ElectricalPartManuals.com



(PHOTO 801870)

Fig. 14. Manual trip and cut-off switch for all mechanisms

PARTS REFERENCED IN FIG. 14; ALL RATINGS

Ref. No.	Catalog Number for Type			No. per Mechanism	Description
	AM-4.16-(MVA)-0	AM-4.16-(MVA)-1	AM-4.16-(MVA)-2		
600	6353582G3	6353582G3	6353582G3	1	Cut off switch
603	6509794	6509794	6509794	1	Spring
604	6443658	6443658	6443658	1	Spring guide
605	6477412ABP3	6477412ABP3	6477412ABP3	1	Screw
606	6443656	6443656	6443656	1	Bushing
607	6477412AAP24	6477412AAP24	6477412AAP24	2	Screw
608	6557279P1	6557279P1	6557279P1	1	Operating lever
609	6597214P1	6597214P1	6597214P1	1	Support

www.ElectricalPartManuals.com

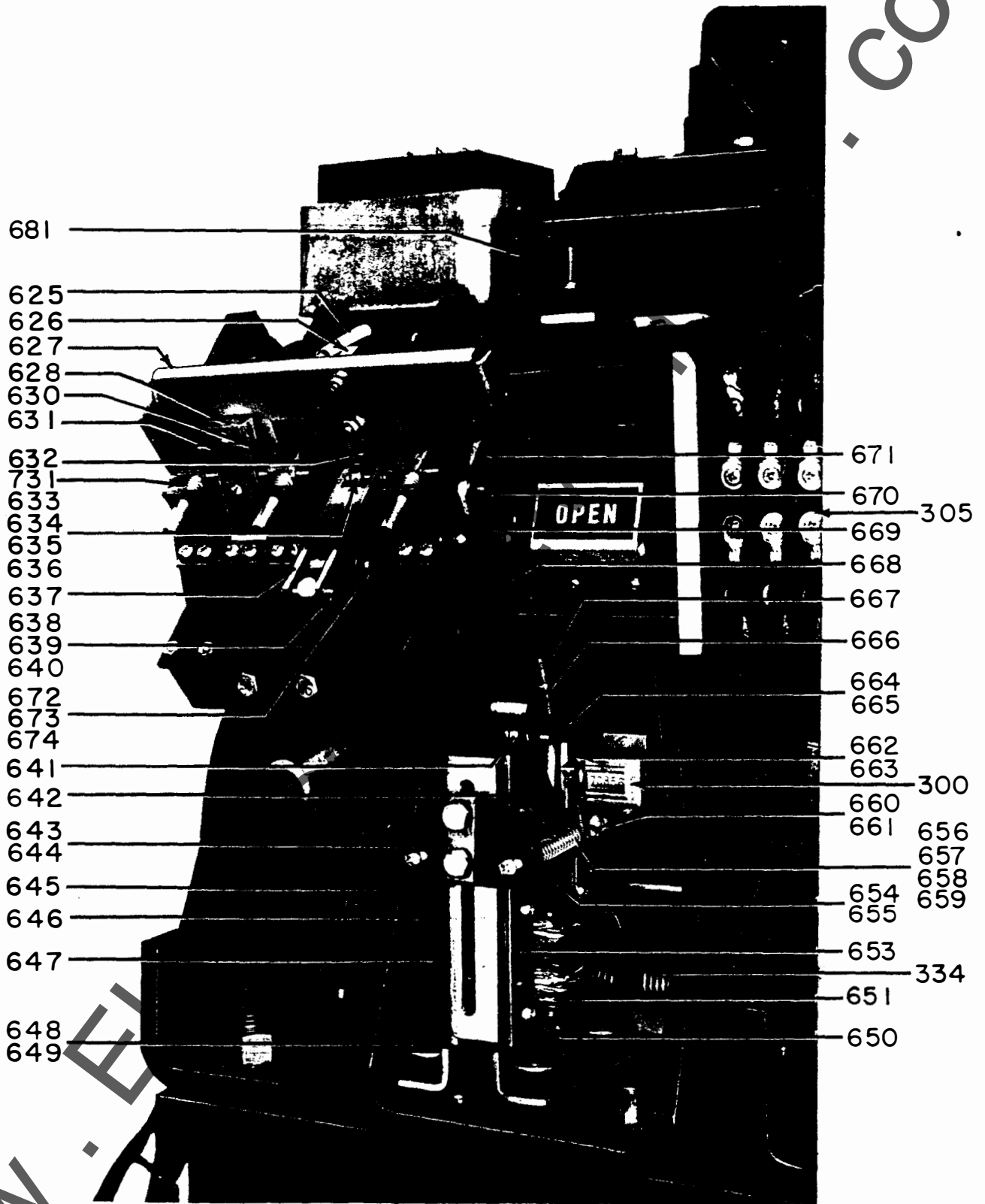
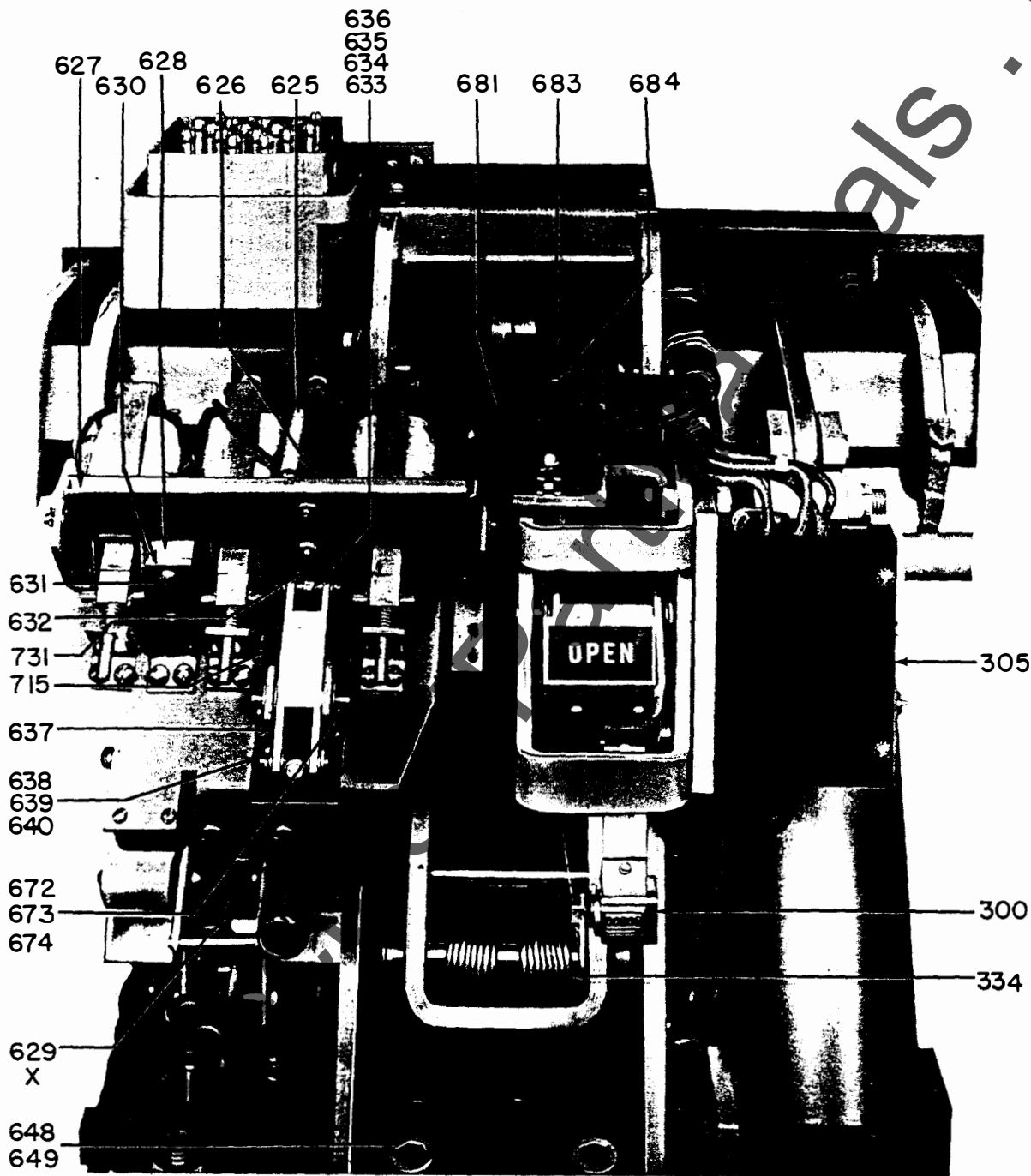


Fig. 15. Front view of type MS-13 mechanism, with current trips and under-voltage device for types AM-4.16-0 and -1 breakers (for details of impact trip device, see fig. 16)

www.ElectricalPartManuals.com



(PHOTO 8020216)

Fig. 15A. Front view of type MS-13 mechanism, with current trips for type AM-4.16-2 breaker (for details of impact trip device, see fig. 16)

www.ElectricalPartManuals.com

RENEWAL PARTS

TYPES AM-2.4/4.16-0, AM-2.4/4.16-1 AND AM-2.4/4.16-2 MAGNE-BLAST AIR CIRCUIT BREAKERS WITH TYPE MS-13 SOLENOID MECHANISM

TYPE AM-2 4/4.16KV

150/250-2

Sum # 424A 416-21

M/N 6351253ABP

MECH TYPE MS-13

1200 A

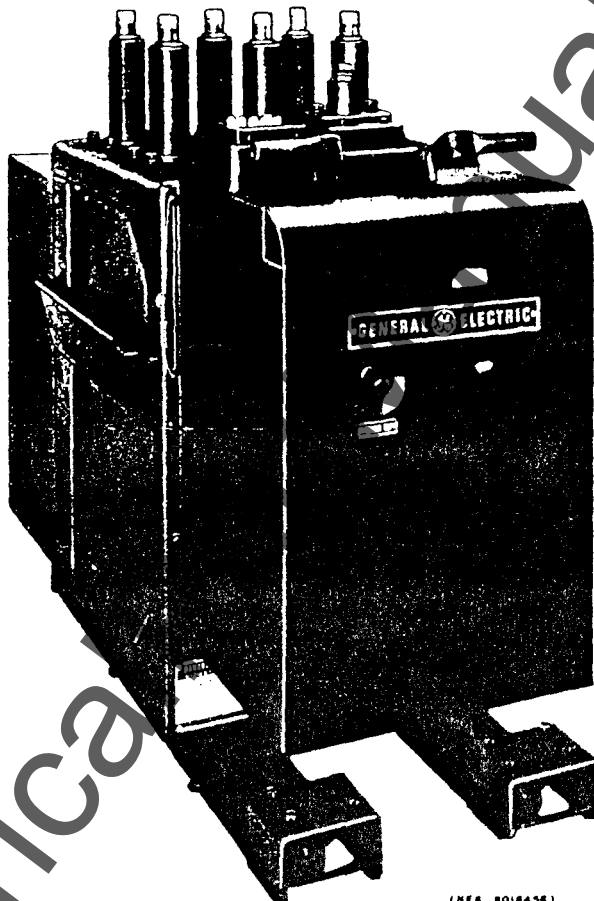
250MVA

INT. AMPK 35000

MOVI AMP 60000

1400 Lb

MFG 7/54



(SEE 8016458)

Fig. 1. Type AM-2.4/4.16-100/150-1 air circuit breaker

Note: The listed terms "right" and "left" apply when facing the solenoid mechanism end of the breaker.

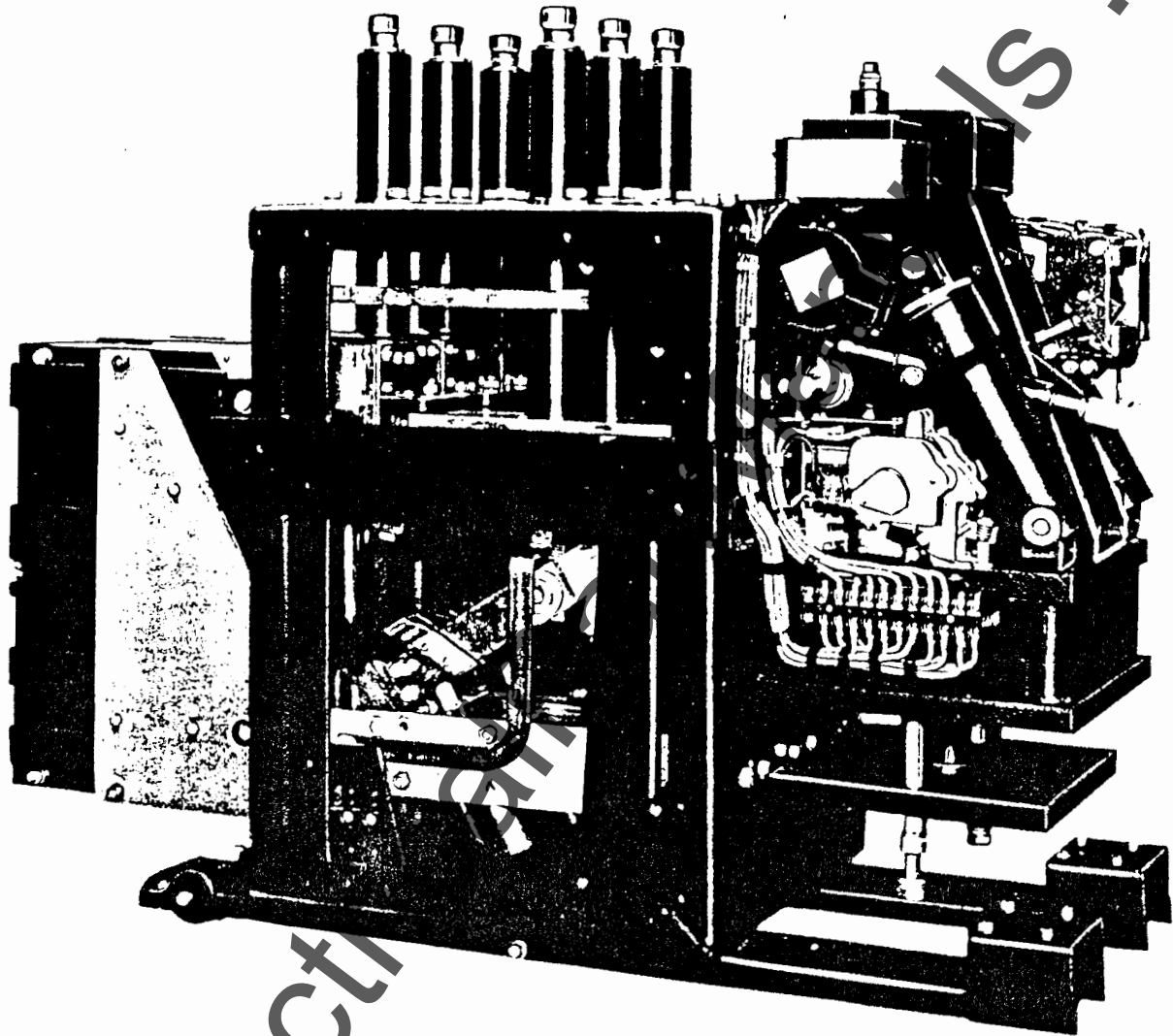
ORDERING INSTRUCTIONS

1. Always specify the complete nameplate data of both the breaker and the mechanism.
2. Specify the quantity, catalog number (if listed), reference number (if listed), and description of each part ordered, and this bulletin number.
3. Standard hardware, such as screws, bolts, nuts, washers, etc., is not listed in this bulletin. Such items should be purchased locally.
4. For prices, refer to the nearest office of the General Electric Company.

When ordering renewal parts, give quantity, catalog number, description of each item required, and complete nameplate reading.

GENERAL  ELECTRIC

www.ElectricalPartManuals.com



(PHOTO 8012184)

Fig. 2. Side view of type AM-2.4/4.16-100/150-1 breaker with mechanism cover, side covers and box barrier removed

www.ElectricalPartManuals.com

TYPES "AM-2.4/4.16" MAGNE-BLAST AIR CIRCUIT BREAKERS

GEF-3873B

PARTS RECOMMENDED FOR NORMAL MAINTENANCE

In the tabulation below are listed the parts of those breakers which are usually recommended for stock for normal maintenance. Other parts are listed on the following pages.

Fig. No.	Ref. No.	Rating in MVA	Rating in AMPS	Catalog Number for Type			No. per Breaker	Description
				AM-2.4/4.16-(MVA)-0	AM-2.4/4.16-(MVA)-1	AM-2.4/4.16-(MVA)-2		
3	1	All	All	263B293P2	263B293P2	263B293P2	3	Booster cylinder
5	181	All	All	6597275P1	6597275P1	6597275P1	6	Upper runner insulation
5A	191	100/150	600/1200	236C791P8	236C791P8	236C791P8	12	Primary contact finger
5A	191	150/250	1200	236C791P8	236C791P8	236C791P8	24	Primary contact finger
5A	191	All	2000	236C791P8	236C791P8	236C791P8	24	Primary contact finger
6	212	100/150	600/1200	6591644P7	6591644P7	6591644P7	3	Primary contact mov.
6	212	100/150	600/1200	6591644P8	6591644P8	6591644P8	3	Primary contact mov.
6	212	150/250	1200	6591644P7	6591644P7	6591644P7	6	Primary contact mov.
6	212	150/250	1200	6591644P8	6591644P8	6591644P8	6	Primary contact mov.
6	212	All	2000	6591644P7	6591644P7	6591644P7	6	Primary contact mov.
6	212	All	2000	6591644P8	6591644P8	6591644P8	6	Primary contact mov.
5A	195	All	600/1200	6509787P1	6509787P1	6509787P1	12	Primary contact finger spring
5A	195	All	2000	6509787P1	6509787P1	6509787P1	24	Primary contact finger spring
6	211	All	All	6496488P3	6496488P3	6496488P3	3	Secondary arcing contact mov.
5A	194	All	All	389A616P6	6445087P1	6445087P1	3	Buffer
5A	188	100/150	600/1200	389A616G1	6557243P1	6557243P1	6	Buffer clamp
5A	188	150/250	1200	389A616G2	6557243P2	6557243P2	6	Buffer clamp
5A	188	All	2000	389A616G2	6557243P2	6557243P2	6	Buffer clamp
5A	193	All	All	6597277P1	6597277P2	6597277P2	6	Upper runner insulation (bottom)
5A	181	All	All	6597275P1	6597275P1	6597275P1	6	Upper runner insulation (top)
5A	192	All	All	6514946G2	383A903G1	383A903G1	3	Secondary arcing finger stationary
5A	187	All	All	175V232P1	175V232P1	175V232P1	3	Protector for blow-out coil
7,7A	345	All	All	6375521G2	6375521G2	6375521G2	1	Closing coil (125 V DC)
7,7A	345	All	All	6375521G1	6375521G1	6375521G1	1	Closing coil (250 V)
8,8A	402	All	All	6174582G1	6174582G1	6174582G1	1	Potential trip coil (125 VDC)
8,8A	402	All	All	6174582G2	6174582G2	6174582G2	1	Potential trip coil (250 VDC)
8,8A	402	All	All	6174582G14	6174582G14	6174582G14	1	Potential trip coil (230 V AC)
8,8A	402	All	All	6275070G1	6275070G1	6275070G1	1	Potential trip coil (24 VDC)
8,8A	402	All	All	6275070G2	6275070G2	6275070G2	1	Potential trip coil (48 VDC)
17	753	All	All	6275017G19	6275017G19	6275017G19	1	Control device coil (125 VDC)
17	753	All	All	6275017G20	6275017G20	6275017G20	1	Control device coil (250 VDC)
17	753	All	All	6275017G34	6275017G34	6275017G34	1	Control device coil (230 V AC)
16	738	All	All	6174599G2	6174599G2	6174599G2	3	Current trip coil (3 amp AC)
16	738	All	All	6174599G6	6174599G6	6174599G6	1	Capacitor trip coil (230 V AC)
15	651	All	All	6175017G20	6275017G20	6275017G20	1	UVD coil (DC)
15	651	All	All	6175017G21	6275017G33	6275017G33	1	UVD coil (AC)

www.ElectricalPartManuals.com

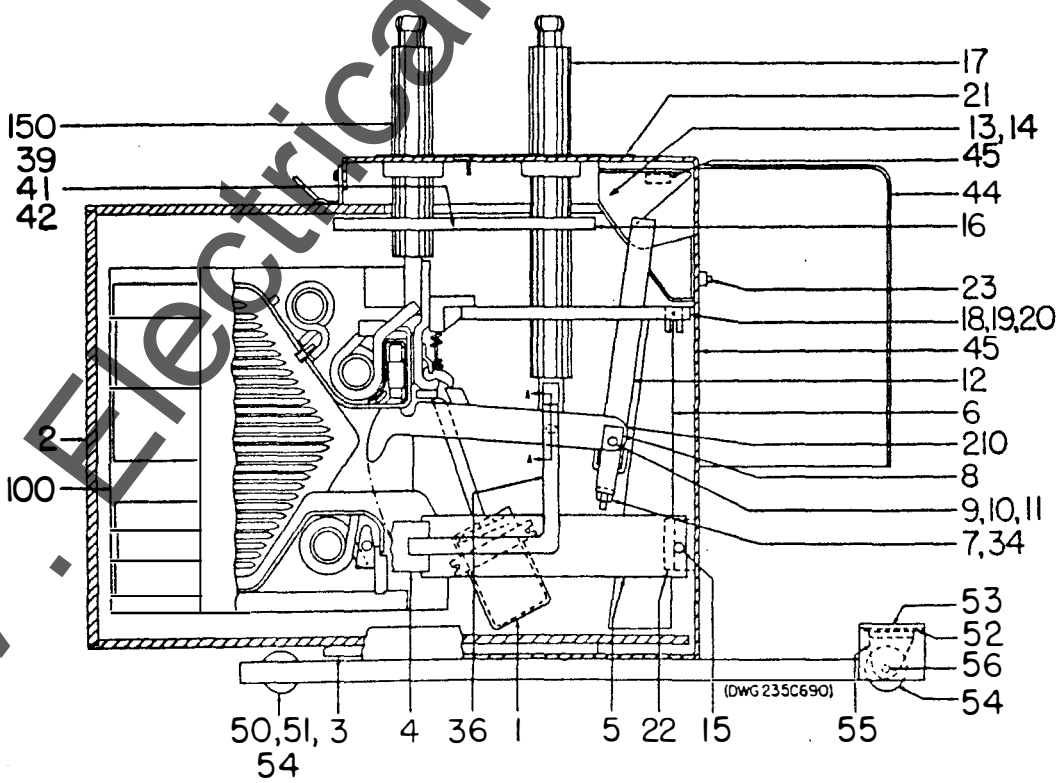
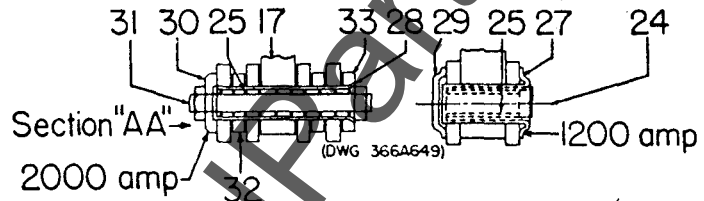
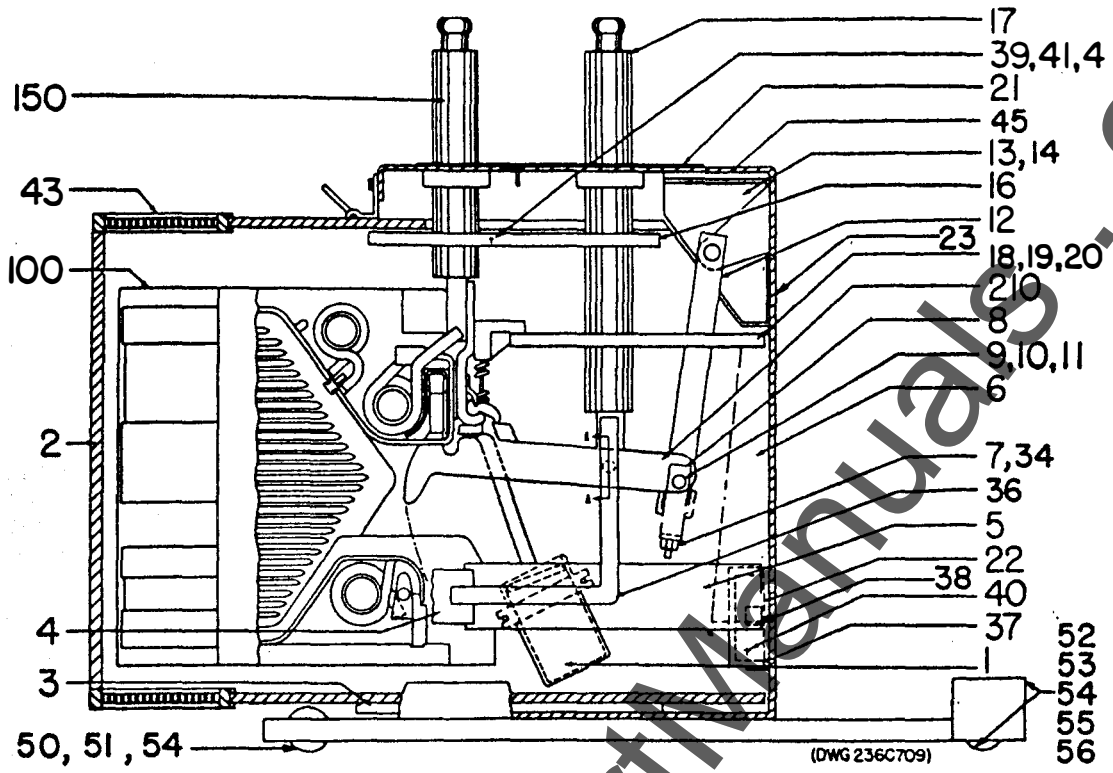


Fig. 3. Cross-sections of type AM-2.4/4.16-0 (upper) and types AM-2.4/4.16-1 and AM-2.4/4.16-2 (lower)

www.ElectricalPartManuals.com

TYPES "AM-2.4/4. 16" MAGNE-BLAST AIR CIRCUIT BREAKERS

GEF-3873B

PARTS REFERENCED IN FIG. 3

Ref. No.	Rating in MVA	Rating in AMPS	Catalog Number for Type			No. per Breaker	Description
			AM-4. 16-(MVA)-0	AM-4. 16-(MVA)-1	AM-4. 16-(MVA)-2		
1	ALL	ALL	263B293P2	263B293P2	263B293P2	3	Booster cylinder
2	ALL	150	236C789G1	236C789G1	236C789G1	1	Box barrier assembly
2	ALL	250	236C789G5	236C789G5	236C789G5	1	Box barrier assembly
3	ALL	ALL	6557065P1	6557065P1	6557065P1	2	Barrier support
4	ALL	ALL	6443723	6443723	6443723	6	Coupling for arc chute support
5	ALL	ALL	6597235P1	6597235P1	6597235P1	6	Arc chute support
6	ALL	ALL	6291394G1	9915623G1	9915623G1	3	Vertical barrier, front
7	ALL	ALL	213P2985	213P2985	213P2985	3	Jam nut
8	ALL	ALL	6442268	6442268	6442268	3	Yoke
9	ALL	ALL	6477427CAP6	6477427CAP6	6477427CAP6	3	Pin
10	ALL	ALL	6477424P6	6477424P6	6477424P6	6	Retaining ring
11	ALL	ALL	6477400P6	6477400P6	6477400P6	8	Washer
12	ALL	ALL	366A624	366A624	366A624	3	Yoke and operating rod assembly
13	ALL	ALL	6597244AB	6597244AB	6597244AB	1	Stiffener (left-hand)
14	ALL	ALL	6597244AA	6597244AA	6597244AA	1	Stiffener (right-hand)
15	ALL	ALL	*	175V504	175V504	3	Block
16	ALL	600/1200	6597237P1	175V502P1	175V502P1	6	Horizontal barrier, upper
16	ALL	2000	6597237P2	175V502P2	175V502P2	6	Horizontal barrier, upper
17	ALL	1200	236C766G2	236C766G2	236C766G2	3	Bushing (long)
17	ALL	2000	236C766G3	236C766G3	236C766G3	3	Bushing (long)
17	ALL	600	236C766G1	236C766G1	236C766G1	3	Bushing (long)
18	ALL	600/1200	6597232P1	6597232P1	6597232P1	3	Horizontal barrier (right)
18	ALL	2000	6597232P3	6597232P3	6597232P3	3	Horizontal barrier (right)
19	ALL	600/1200	6597232P2	6597232P2	6597232P2	3	Horizontal barrier (left)
19	ALL	2000	6597232P4	6597232P4	6597232P4	3	Horizontal barrier (left)
20	ALL	600/1200	374A299G3	374A299G3	374A299G3	6	Horizontal barrier (lower)
20	ALL	2000	374A299G4	374A299G4	374A299G4	6	Horizontal barrier (lower)
21	ALL	600/1200	6597229P2	6597229P2	6597229P2	4	Top plate
21	ALL	2000	6592511P1	6592511P1	6592511P1	1	Top plate
22	ALL	ALL	6597419AA	6597419AA	6597419AA	3	Support
23	ALL	ALL	6557888P1	6557888P1	6557888P1	2	Pin
24	ALL	600/1200	6591360P11	6591360P11	6591360P11	3	Screw
25	ALL	600/1200	421A239	421A239	421A239	3	Spring
25	ALL	1200/2000	421A239	421A239	421A239	3	Spring
27	100/150	600/1200	6442371	6442371	6442371	3	Bearing
28	ALL	1200/2000	6442257	6442257	6442257	3	Bearing
29	100/150	600/1200	6441617	6441617	6441617	3	Washer
30	ALL	1200/2000	6443653	6443653	6443653	3	Washer
31	ALL	1200/2000	6442258	6442258	6442258	3	Stud
32	ALL	1200/2000	6442246	6442246	6442246	6	Spacer
34	ALL	ALL	6477429P4	6477429P4	6477429P4	3	Nut
36	ALL	ALL	6597233P1	6597233P1	6597233P1	3	Connection bar
37	ALL	ALL	6597241P1	*	*	3	Spacer
38	ALL	ALL	6597422AA	*	*	3	Bolting plate for lower horizontal barrier
39	ALL	ALL	6597420P1	6597420P1	6597420P1	6	Stud
40	ALL	ALL	6477414ACP13	6477414ACP13	6477414ACP13	6	Stud
41	ALL	ALL	6443502	6443502	6443502	6	Nut
42	ALL	ALL	6597421	6597421	6597421	6	Nut
43	ALL	ALL	6514914G1	*	*	6	Muffler
44	ALL	ALL	Δ	Δ	Δ	1	Cover for mechanism
45	ALL	ALL	6557031P1	6557031P1	6557031P1	1	Interlock block
50	ALL	ALL	6076403P333	6076403P333	6076403P333	2	Axle, rear
51	ALL	ALL	6445099	6445099	6445099	4	Spacer, rear wheel
52	ALL	ALL	6445100	6445100	6445100	2	Spacer, front wheel
53	ALL	ALL	6597282AA	6597282AA	6597282AA	1	Wheel base and support, left
53A	ALL	ALL	6597282AB	6597282AB	6597282AB	1	Wheel base and support, right
54	ALL	ALL	6597295P1	6597295P1	6597295P1	4	Wheel
55	ALL	ALL	6597296P3	6597296P3	6597296P3	2	Caster fork
56	ALL	ALL	6597297P2	6597297P2	6597297P2	2	Axle, front

* Not furnished in this breaker.

Δ Order by specifying complete breaker nameplate data, Ref. No., and description.

www.ElectricalPartManuals.com

TYPES "AM-2.4/4.16" MAGNE-BLAST AIR CIRCUIT BREAKERS

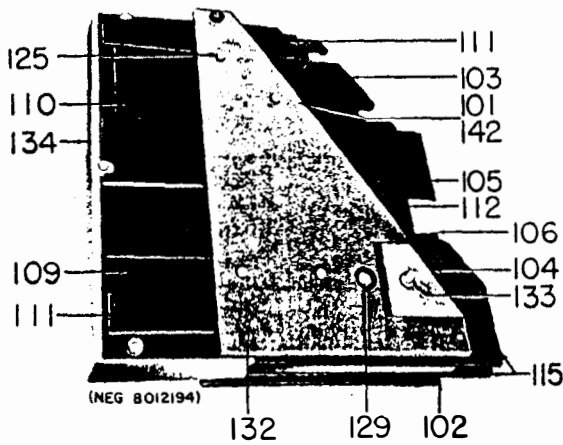


Fig. 4. Complete arc chute assembly (ref. 100)

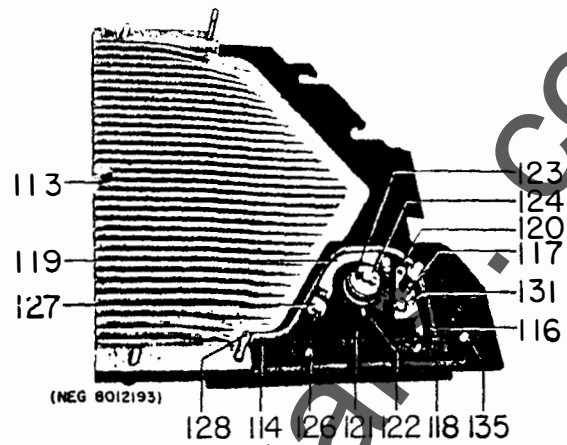


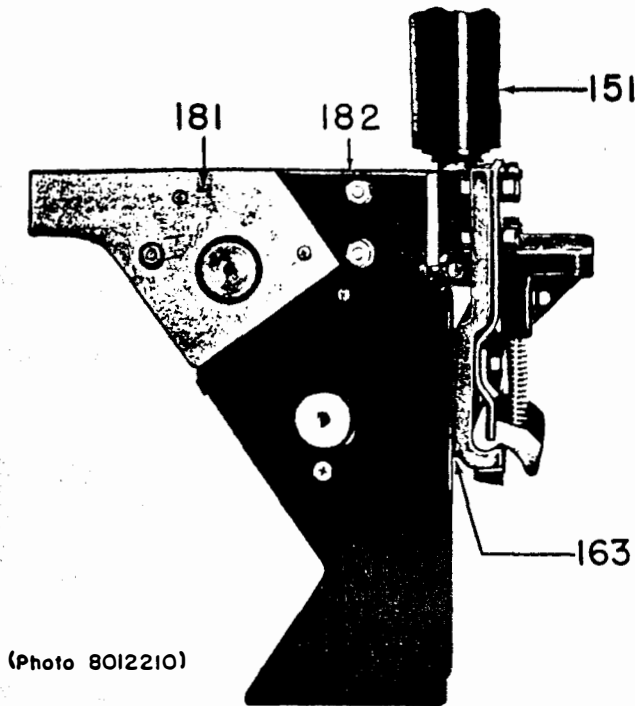
Fig. 4A. Arc chute assembly with side cover removed

PARTS REFERENCED IN FIGS. 4 & 4A FOR ALL RATINGS

Ref. No.	Catalog Number for Type			No. per Breaker	Description
	AM-4.16-(MVA)-0	AM-4.16-(MVA)-1	AM-4.16-(MVA)-2		
100	6239973AA	215D421G1	215D421G1	3	Arc chute assembly, complete
101	6557987P1	366A666P1	366A666P1	3	Brace, left
102	6557987P2	366A666P1	366A666P1	3	Brace, right
103	6597279P1	6597279P1	6597279P1	6	Pole piece, upper
104	6597287P1	6597287P1	6597287P1	6	Pole piece, lower
105	6443725	6443725	6443725	6	Insulation for pole piece, upper, outer
106	6443726	6443726	6443726	6	Insulation for pole piece, lower, outer
*107	6597558P3	6597558P3	6597558P3	6	Insulation for pole piece, upper, inner
*108	6597558P4	6597558P4	6597558P4	6	Insulation for pole piece, lower, inner
109	6597558P2	6597558P2	6597558P2	6	Insulation for pole piece, lower
110	6597558P1	6597558P1	6597558P1	6	Insulation for pole piece, upper
111	6597557P1	6597557P1	6597557P1	12	Insulation for pole piece
112	6597278P1	6597278P1	6597278P1	6	Shield
113	264B100G3	264B100G3	264B100G3	6	Arc chute half
114	6597251AAP1	6597251AAP1	6597251AAP1	3	Arc runner
115	6591960P1	6591960P1	6591960P1	6	Lower insulation
116	6597236P1	6597236P1	6597236P1	3	Insulation
117	6591769ABP1	6591769ABP1	6591769ABP1	3	Spacer for lower arc runner
118	6597240P1	6597240P1	6597240P1	3	Spacer for lower arc runner
119	6558777P1	6558777P1	6558777P1	3	Spacer
120	6591734P14	6591734P14	6591734P14	3	Insulation
121	6592556P1	6592556P1	6592556P1	3	Support for lower coil
122	6597281AAP1	6597281AAP1	6597281AAP1	6	Coil for lower arc runner
123	6441638	6441638	6441638	3	Insulation tube for core
124	6441722P1	6441722P1	6441722P1	3	Core
125	6445072P3	6445072P3	6445072P3	24	Stud
126	210328	210328	210328	6	Screw
127	6443618	6443618	6443618	6	Screw
128	6443753P1	6443753P1	6443753P1	9	Stud
129	432249	432249	432249	6	Washer
*130	414752	414752	414752	30	Washer
131	6597401P1	6597401P1	6597401P1	6	Spring washer
132	6445050P5	6445050P5	6445050P5	12	Spacer
133	6443744	6443744	6443744	6	Spacer
134	6445050P3	6445050P3	6445050P3	3	Spacer
135	6591812P12	6445050P4	6445050P4	6	Spacer

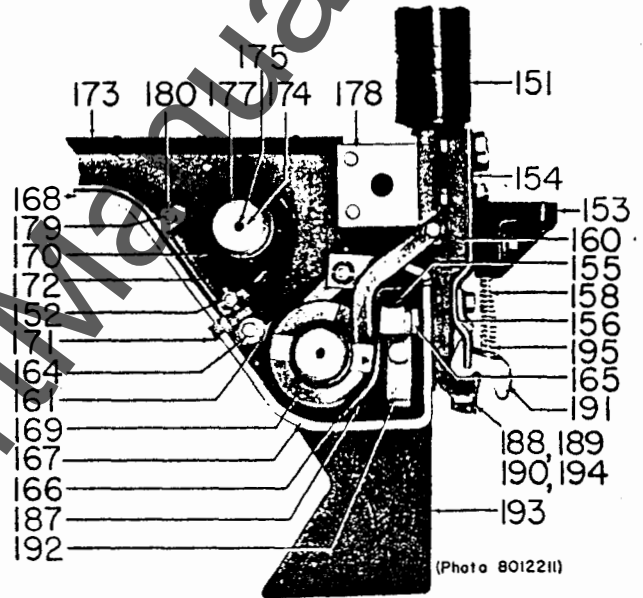
* Not illustrated

www.ElectricalPartManuals.com



(Photo 8012210)

Fig. 5. Complete rear bushing assembly (ref. no. 150)



(Photo 8012211)

Fig. 5A. Rear bushing assembly with side cover removed

PARTS REFERENCED IN FIGS. 5 & 5A

Ref. No.	Rating in MVA	Rating in AMPS	Catalog Number for Type			No. per Breaker	Description
			AM-4.16-(MVA)-0	AM-4.16-(MVA)-1	AM-4.16-(MVA)-2		
150	100/150	600/1200	175L211G2	175L211G6	175L211G6	3	Rear bushing and arc runner assembly
150	150/250	1200	175L211G1	175L211G5	175L211G5	3	Rear bushing and arc runner assembly
150	All	2000	175L211G3	175L211G7	175L211G7	3	Rear bushing and arc runner assembly
150	100/150A	600	175L211G4	175L215G8	175L215G8	3	Rear bushing and arc runner assembly
151	All	1200	236C765G2	236C765G2	236C765G2	3	Bushing, rear
151	All	2000	236C765G3	236C765G3	236C765G3	3	Bushing, rear
151	100/150	600	236C765G1	236C765G1	236C765G1	3	Bushing, rear
152	All	All	6597401P1	6597401P1	6597401P1	12	Spring washer
153	100/150	600/1200	6592330P2	6592330P2	6592330P2	3	Spring retainer
153	150/250	All	6592331P2	6592331P2	6592331P2	3	Spring retainer
154	100/150	600/1200	6442352	6442352	6442352	3	Retainer for stationary primary contact finger
154	150/250	1200	236C791P3	236C791P3	236C791P3	3	Retainer for stationary primary contact finger
154	All	2000	236C791P3	236C791P3	236C791P3	3	Retainer for stationary primary contact finger

(Continued on page 8)

www.ElectricalPartManuals.com

TYPES "AM-2.4/4.16" MAGNE-BLAST AIR CIRCUIT BREAKERS

PARTS REFERENCED IN FIGS. 5 & 5A (CONT'D)

Ref. No.	Rating in MVA	Rating in AMPS	Catalog Number for Type			No. per Breaker	Description
			AM-4.16-(MVA)-0	AM-4.16-(MVA)-1	AM-4.16-(MVA)-2		
155	All	All	6449307G1	6449307G1	6449307G1	3	Cage for stationary arcing contacts
156	150/250	1200	6442356	236C791P4	236C791P4	3	Clamping plate for retainer
156	All	2000	6442356	236C791P4	236C791P4	3	Clamping plate for retainer
158	100/150	600/1200	6442357	6442357	6442357	12	Guide for spring
158	150/250	1200	6442357	6442357	6442357	24	Guide for spring
158	All	2000	6442357	6442357	6442357	24	Guide for spring
160	100/150	600/1200	6557024	383A904G1	383A904G1	3	Contact support assembly
160	150/250	1200	6557024	383A904G2	383A904G2	3	Contact support assembly
160	All	2000	6557025	383A904G2	383A904G3	3	Contact support assembly
161	All	All	414752	414752	414752	6	Washer
163	All	All	6445085	6445085	6445085	3	Insulation for arc runner
164	All	All	6591812P5	6591812P5	6591812P5	12	Spacer
165	All	All	6441602	6441602	6441602	3	Nut
166	All	All	6442348	175V230	175V230	3	Barrier for primary arcing contact assembly
167	All	All	6591750AB	6591750AB	6591750AB	3	Upper arc runner, lower section
168	All	All	6591755AB	6591755AB	6591755AB	3	Upper arc runner, upper section
169	All	All	456A302G1	456A302G1	456A302G1	3	Coil #1 for upper arc runner
170	All	All	6591770AA	6591770AA	6591770AA	3	Coil #2 for upper arc runner
171	All	All	6442370P1	6442370P2	6442370P2	3	Spacer for arc runner
172	All	All	6442369	6442369	6442369	3	Filler plate for arc runner
173	All	All	6443730	6443730	6443730	3	Cover
174	All	All	6441722	6441722	6441722	6	Core
175	All	All	6477415P3	6477415P3	6477415P3	6	Groov-pin for core
*176	All	All	437230	437230	437230	12	Washer for core
177	All	All	6441638	6441638	6441638	6	Insulation tube for core
178	All	600/1200	6591737P3	6591737P3	6591737P3	3	Spacer
178	All	2000	6591737P4	6591737P4	6591737P4	3	Spacer
179	All	All	6597448P1	6597448P1	6597448P1	3	Stud
180	All	All	6477401AAP29	6477401AAP29	6477401AAP29	6	Spacer
181	All	All	6597275P1	6597275P1	6597275P1	6	Upper runner insulation (top)
182	All	All	6597276P1	366A667P1	366A667P1	6	Support for coil
187	All	All	175V232	175V232	175V232	3	Coil protector
188	100/150	600/1200	389A616G1	6557243P1	6557243P1	6	Clamp
188	150/250	1200	389A616G1	6557243P2	6557243P2	6	Clamp
188	All	2000	389A616G2	6557243P2	6557243P2	6	Clamp
189	All	All	176V939P2	176V939P2	176V939P2	12	Screw
190	All	All	6477430P3	6477430P3	6477430P3	6	Groov-pin
191	100/150	600/1200	6449308P1	6449308P1	6449308P1	12	Stationary primary contact finger
191	150/250	1200	236C791P8	236C791P8	236C791P8	24	Stationary primary contact finger
191	All	2000	236C791P8	236C791P8	236C791P8	24	Stationary primary contact finger
192	All	All	6514946G2	383A903G1	383A903G1	3	Stationary arcing contact finger assembly
193	All	All	6597277P1	6597277P2	6597277P2	6	Upper runner insulation (bottom)
194	All	All	389A616P6	6445087	6445087	3	Buffer
195	100/150	600/1200	6509787	6509787	6509787	12	Spring for stationary primary contact fingers
195	150/250	1200	6509787	6509787	6509787	24	Spring for stationary primary contact fingers
195	All	2000	6509787	6509787	6509787	24	Spring for stationary primary contact fingers

* Not illustrated

www.ElectricalPartManuals.com

TYPES "AM-2.4/4.16" MAGNE-BLAST AIR CIRCUIT BREAKERS

GEF-3873B

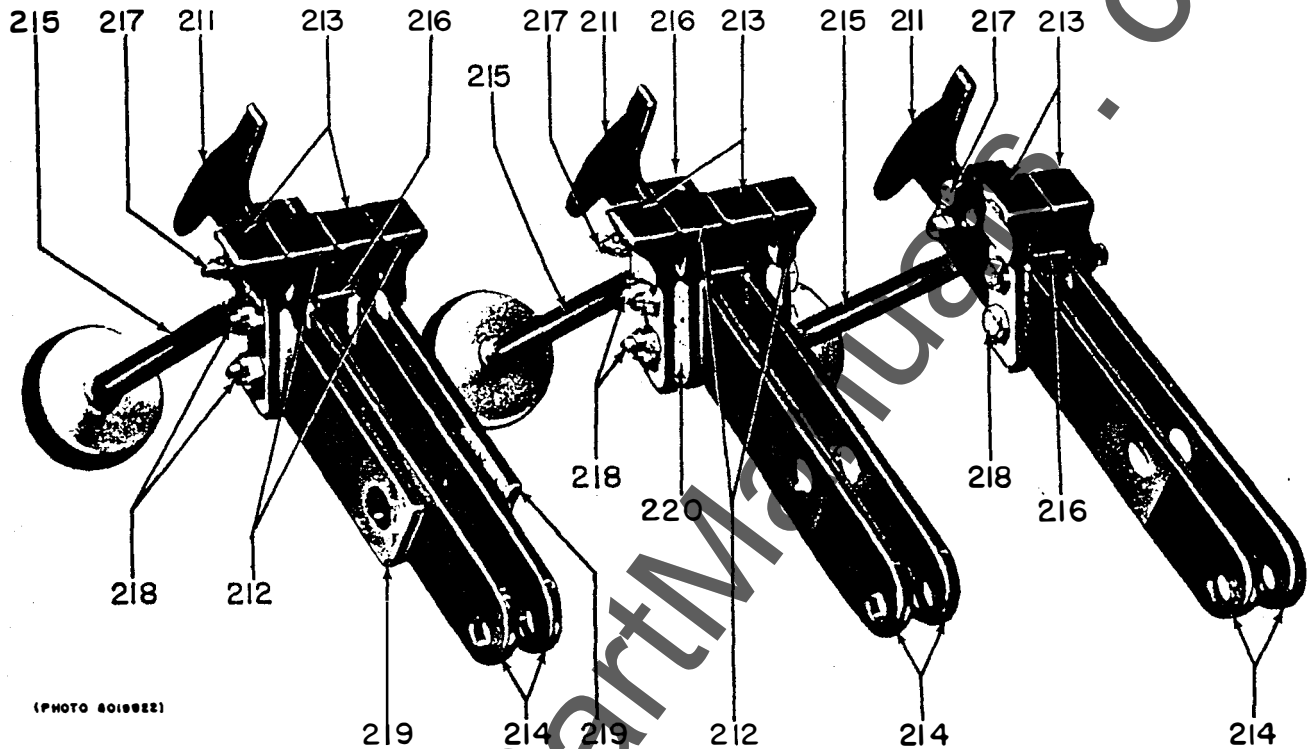


Fig. 6A. For 2000 amp breakers, all ratings

Fig. 6B. For 1200 amp, 150/250 MVA ratings

Fig. 6C. For 600 and 1200 amp, 100/150 MVA ratings

PARTS REFERENCED IN FIGS. 6A, 6B & 6C

Ref. No.	Rating in MVA	Rating in AMPS	Catalog Number for Type			No. per Breaker	Description
			AM-4.16-(MVA)-0	AM-4.16-(MVA)-1	AM-4.16-(MVA)-2		
210	100/150	600;1200	236C792G20	236C792G20	236C792G20	3	Movable contact arm assembly
210	150/250	1200	236C792G21	236C792G21	236C792G21	3	Movable contact arm assembly
210	All	2000	236C792G22	236C792G22	236C792G22	3	Movable contact arm assembly
211	All	All	6496488P3	6496488P3	6496488P3	3	Movable arcing contact
212	100/150	600;1200	6591644P7	6591644P7	6591644P7	3	Movable primary contact
212	150/250	1200	6591644P7	6591644P7	6591644P7	6	Movable primary contact
212	All	2000	6591644P7	6591644P7	6591644P7	6	Movable primary contact
213	100/150	600;1200	6591644P8	6591644P8	6591644P8	3	Movable primary contact
213	150/250	1200	6591644P8	6591644P8	6591644P8	6	Movable primary contact
213	All	2000	6591644P8	6591644P8	6591644P8	6	Movable primary contact
214	All	All	258C666P7	258C666P7	258C666P7	6	Contact arm
215	All	All	236C992G19	236C992G19	236C992G19	3	Tube and piston assembly
216	All	All	6442251P2	6442251P2	6442251P2	3	Spacer
217	All	All	6477412AAP21	6477412AAP21	6477412AAP21	6	Screw
218	100/150	600;1200	6477412AAP17	6477412AAP17	6477412AAP17	12	Screw
218	150/250	1200	6477412ABP8	6477412ABP8	6477412ABP8	12	Screw
218	All	2000	6477412ABP7	6477412ABP7	6477412ABP7	12	Screw
219	All	2000	6592316P2	6592316P2	6592316P2	6	Contact arm
220	All	1200	†	175V516	175V516	6	Spacer

† Not furnished in this breaker.

www.ElectricalPartManuals.com

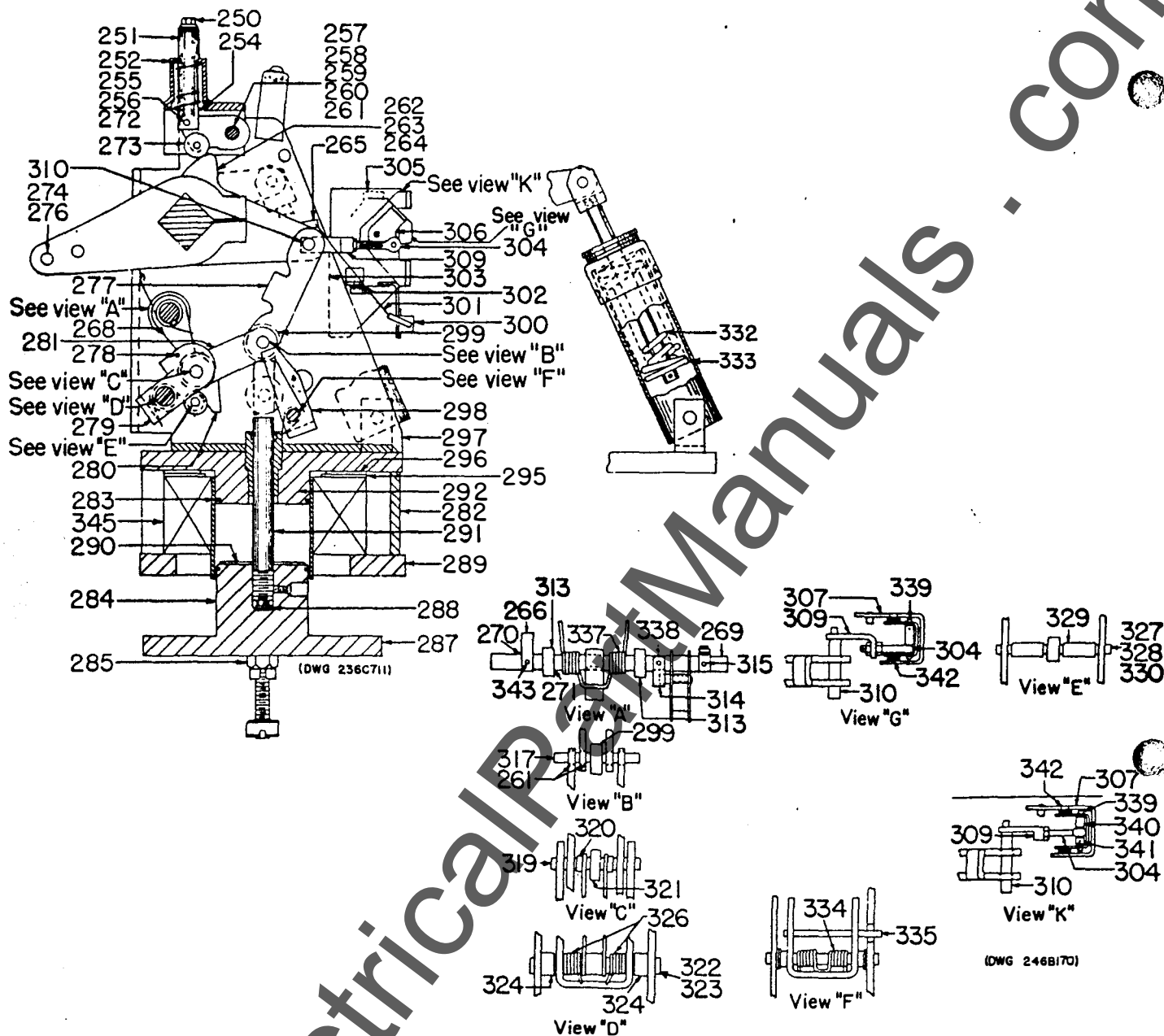


Fig. 7. Cross section of the type MS-13 mechanism of the type AM-2.4/4.16-0 breakers

PARTS REFERENCED IN FIGS. 7 & 7A; ALL RATINGS

Ref. No.	Catalog Number for Type			No. per Mechanism	Description
	AM-4.16-(MVA)-0	AM-4.16-(MVA)-1	AM-4.16-(MVA)-2		
250	6443713	6443713	6443713	1	Screw
251	6442255P1	6442255P1	6442255P1	1	Plunger for interlock
252	6597271AA	264B133G1	264B133G1	1	Bracket for interlock
253	6509728	6509728	6509728	1	Spring for interlock
254	6443715	6443715	6443715	1	Washer
255	6477424P4	6477424P4	6477424P4	9	Retaining ring
256	6477400P18	6477400P18	6477400P18	13	Washer
257	6477427JAP4	6477427JAP4	6477427JAP4	1	Pin
258	6477401CAP30	6477401CAP30	6477401CAP30	3	Spacer
259	6477400P6	6477400P6	6477400P6	40	Washer
260	6597228P1	6597228P1	6597228P1	2	Crank

www.ElectricalPartManuals.com

TYPES "AM-2.4/4.16" MAGNE-BLAST AIR CIRCUIT BREAKERS

GEF-3873B

PARTS REFERENCED IN FIGS. 7 & 7A; ALL RATINGS (CONT'D)

Ref. No.	Catalog Number for Type			No. per Mechanism	Description
	AM-4. 16- (MVA)-0	AM-4. 16- (MVA)-1	AM-4. 16- (MVA)-2		
261	6370566P55	6370566P55	6370566P55	14	Bushing
262	6591715P1	6591715P1	6591715P1	2	Crank
263	6370566P59	6370566P59	6370566P59	2	Bushing
264	6597454P1	↑	↑	2	Nut
264	↑	258C609P7	258C609P7	4	Nut
265	6597455P1	6597455P1	6597455P1	1	Operating arm
266	6591706P1	6591706P1	6591706P1	1	Stop bar
267	6477412AAP22	6477412AAP22	6477412AAP22	5	Screw
268	258C608P7	258C608P7	258C608P7	1	Latch
269	6591707P1	6591707P1	6591707P1	1	Shaft for latch
270	6477424P29	6477424P29	6477424P29	5	Retaining ring
271	6477400P8	6477400P8	6477400P8	20	Washer
272	6477427AAP9	6477427AAP9	6477427AAP9	2	Pin
273	6443714	6443714	6443714	1	Roller
274	6477427CAP6	6477427CAP6	6477427CAP6	1	Pin
275	6477427CAP1	6477427CAP1	6477427CAP1	2	Pin
276	6477424P6	6477424P6	6477424P6	18	Retaining ring
277	6591636P1	6591636P1	6591636P1	1	Link
278	6445063	6445063	6445063	1	Pin
279	6591711P1	6591711P1	6591711P1	1	Link
280	6557829AAP1	6591953P1	6591953P1	1	Latch guide
281	6442285	6442285	6442285	2	Link
282	6591361P1	6591361P1	6591361P1	1	Solenoid pot
283	6591632P1	6591632P1	6591632P1	2	Piston ring
284	6591630P1	6591630P1	6591630P1	1	Armature
285	6591388P20	6591388P20	6591388P20	2	Linking plate
287	6441611P1	6441611P1	6441611P1	1	Plate for armature
288	6370572P9	6370572P9	6370572P9	8	Washer
289	6441635P3	6441635P3	6441635P3	1	Plate
290	6477879P7	6477879P7	6477879P7	1	Washer
291	6442228P1	6442228P1	6442228P1	1	Plunger
292	6557287G1	6557287G1	6557287G1	1	Pole piece and guide
293	6370567P55	6370567P55	6370567P55	3	Bushing
294	6477424P37	6477424P37	6477424P37	1	Retaining ring
295	374A208P1	383A933P1	383A933P1	1	Shim
296	374A208P1	383A933P2	383A933P2	1	Shim
297	6591640P1	6591640P1	6591640P1	1	Bottom plate
298	258C609P1	258C609P1	258C609P1	1	Prop
299	258C609P5	258C609P5	258C609P5	1	Roller
300	6192382ABP1	6192382ABP1	6192382ABP1	1	Operation counter
301	6551742P1	6551742P1	6551742P1	1	Spring for operation counter
302	6477412ABP2	6477412ABP2	6477412ABP2	2	Screw
303	6477412ABP1	6477412ABP1	6477412ABP1	2	Screw
304	6442374	6442374	6442374	1	Eye bolt
305	415A489G1	415A489G1	415A489G1	1	Auxiliary switch
306	6592337P1	6592337P1	6592337P1	1	Crank for auxiliary switch
307	6557286	6557286	6557286	1	Support and pin for auxiliary switch
309	6443707	174V392	174V392	1	Coupling
310	6443680	6443680	6443680	1	Pin
311	6557053P1	6557053P1	6557053P1	1	Handle, right
312	6557053P2	6557053P2	6557053P2	1	Handle, left
313	414A111P1	414A111P1	414A111P1	2	Ball bearing
314	6443686	6443686	6443686	1	Bar for current trip
315	6597225P1	6597225P1	6597225P1	1	Operating bar for cut-off switch
316	6477424P3	6477424P3	6477424P3	8	Retaining ring
317	6442227	6442227	6442227	1	Pin for prop
318	6370566P75	6370566P75	6370566P75	1	Bushing

↑ Not furnished in this breaker.

www.ElectricalPartManuals.com

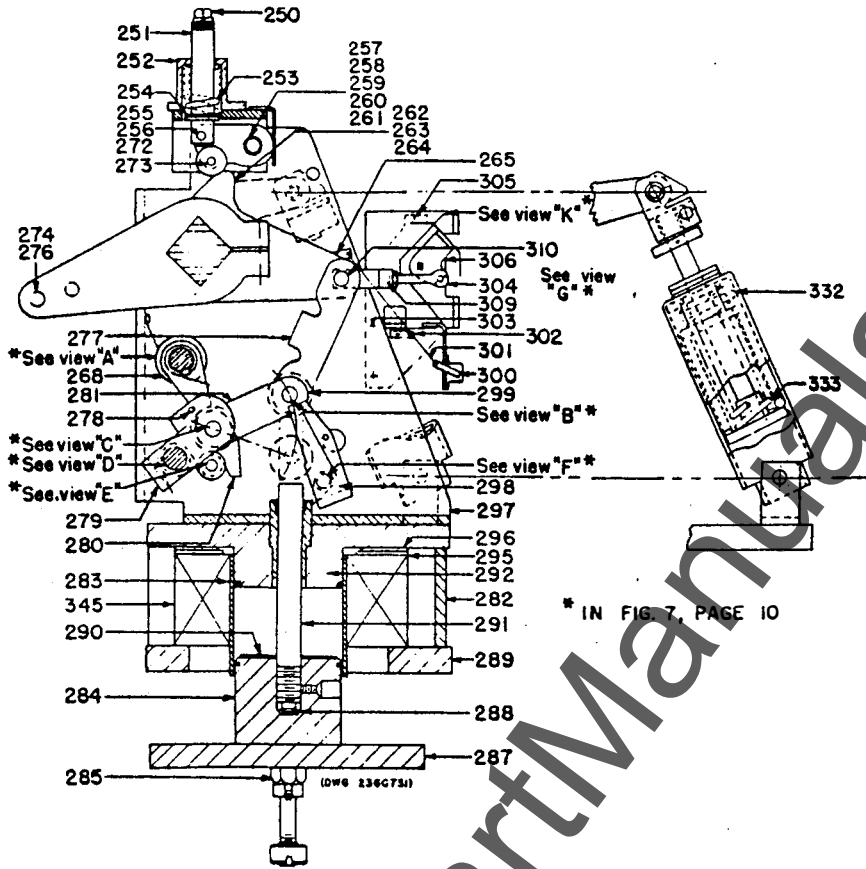


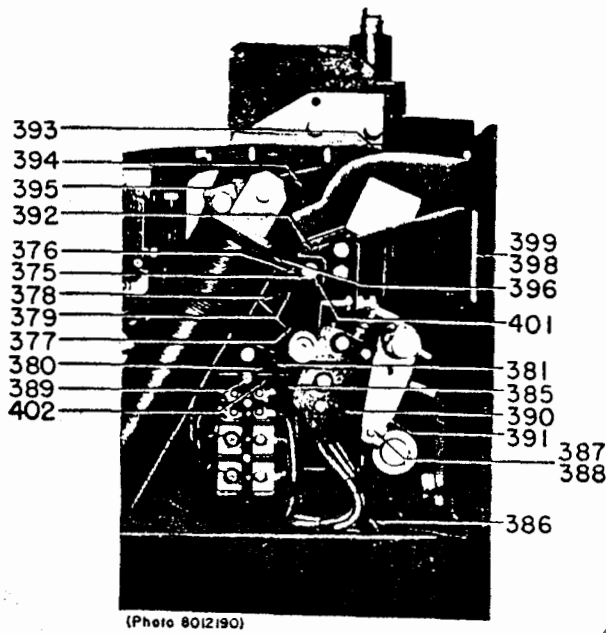
Fig. 7A. Cross section of the type MS-13 mechanism for the types AM-2.4/4.16-1 and -2 breakers

PARTS REFERENCED IN FIGS. 7 & 7A; ALL RATINGS (CONT'D)

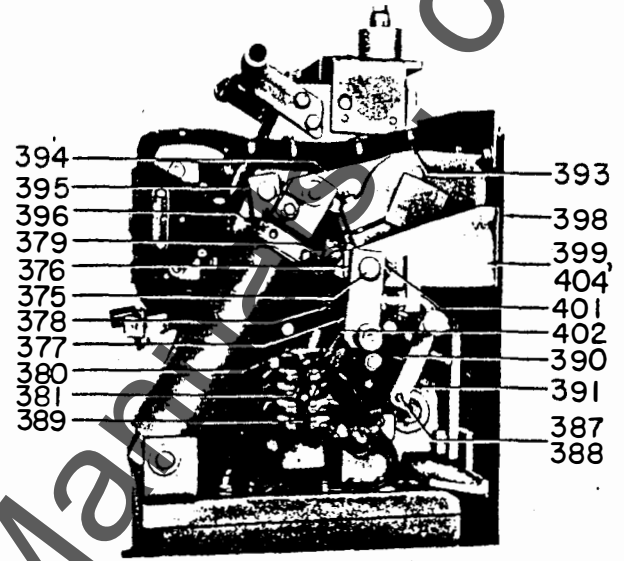
Ref. No.	Catalog Number for Type			No. per Mechanism	Description
	AM-4. 16- (MVA)-0	AM-4. 16- (MVA)-1	AM-4. 16- (MVA)-2		
319	6477427CAP7	6477427CAP7	6477427CAP7	1	Pin
320	6477401CAP29	6477401CAP29	6477401CAP29	2	Spacer
321	6477418BAP5	6477418BAP5	6477418BAP5	1	Needle bearing
322	6477427EAP9	6477427EAP9	6477427EAP9	1	Pin
323	6477424P9	6477424P9	6477424P9	3	Retaining ring
324	6477401DAP32	6477401DAP32	6477401DAP32	2	Spacer
326	6509799	6509799	6509799	2	Spring
327	6477427BAP11	6477427BAP11	6477427BAP11	1	Pin
328	6477424P5	6477424P5	6477424P5	8	Retaining ring
329	6477401CAP2	6477401CAP2	6477401CAP2	2	Spacer
330	6477400P5	6477400P5	6477400P5	10	Washer
331	258C609P6	258C609P6	258C609P6	1	Roller
332	369A468	369A468	369A468	1	Spring, inner
333	369A411	369A411	369A411	1	Spring, outer
334	6477097	6477097	6477097	1	Spring for prop
335	258C609P8	258C609P8	258C609P8	1	Pin
336	6477414ACP23	6477414ACP23	6477414ACP23	2	Stud
337	421A256P1	421A256P1	421A256P1	1	Checking spring for latch
338	6445071	6445071	6445071	1	Spacer
339	6442367	6442367	6442367	1	Pin
340	175V268	175V268	175V268	1	Spacer
341	6442366	†	†	1	Spacer
342	6244347P1	6244347P1	6244347P1	1	Bearing
343	6477412AAP22	6477412AAP22	6477412AAP22	1	Screw for operating bar
345	6375521G2	6375521G2	6375521G2	1	Closing coil (125 V d-c)
345	6375521G1	6375521G1	6375521G1	1	Closing coil (250 V d-c)

† Not furnished in these breakers.

www.ElectricalPartManuals.com



(Photo 8012190)



(Photo 8020184)

Fig. 8. Right side view of type MS-13 mechanism for type AM-4.16-0 breakers

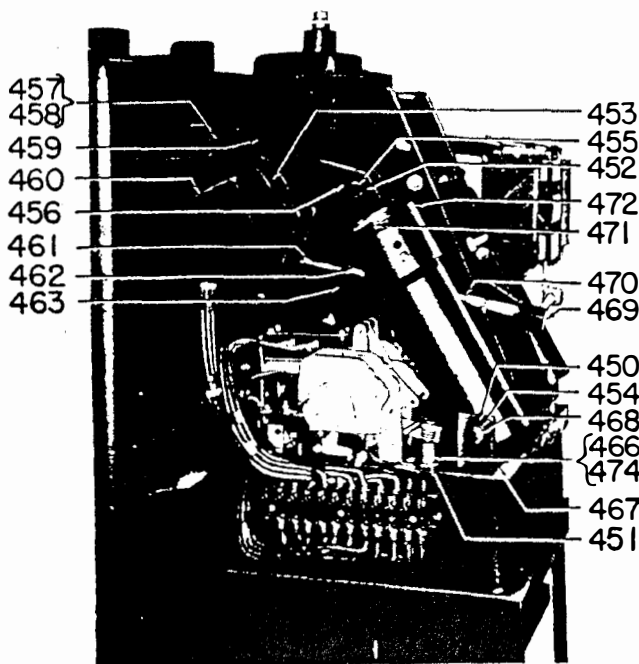
Fig. 8A. Right side view of types MS-13 mechanism for the types AM-4.16-1 and -2 breakers

PARTS REFERENCED IN FIGS. 8 & 8A; ALL RATINGS

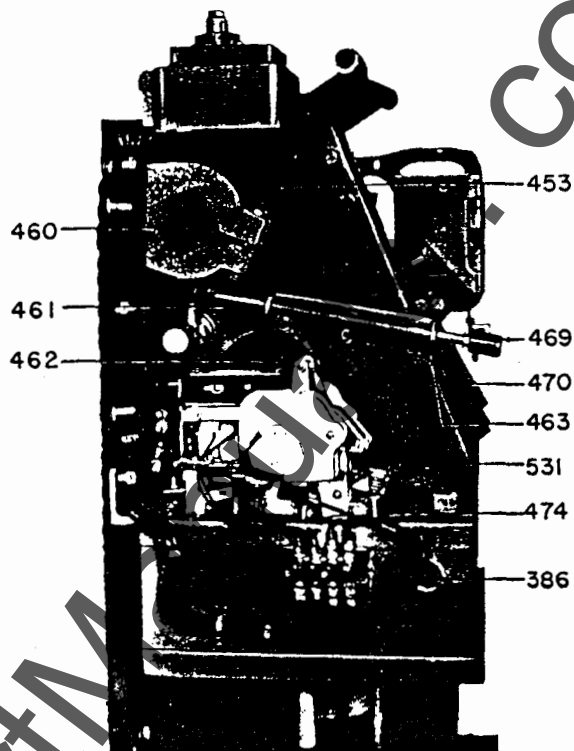
Ref. No.	Catalog Number for Type			No. per Mechanism	Description
	AM-4. 16-(MVA)-0	AM-4. 16-(MVA)-1	AM-4. 16-(MVA)-2		
375	6557063P2	374A221P2	374A221P2	1	Shaft for interlock
376	6477400P7	6477400P7	6477400P7	3	Washer
377	6557285	384A331G1	384A331G1	1	Crank assembly for interlock
378	6443676	374A218P1	374A218P1	1	Link
379	6445137	374A216P1	374A216P1	1	Crank
380	6442232	6442232	6442232	2	Support for trip coil
381	6477417AAP4	6477417AAP4	6477417AAP4	2	Washer
385	6597226P1	†	†	1	Bracket
386	6445059	6445059	6445059	1	Insulation tubing
387	6477400P3	6477400P3	6477400P3	3	Washer
388	6477402CAP3	6477402CAP3	6477402CAP3	1	Pin
389	6442234	6442234	6442234	1	Armature
390	6353582G1	6353582G1	6353582G1	1	Checking switch for latch
391	6591639P1	6591639P1	6591639P1	1	Trip crank
392	374A224G1	374A224G1	374A224G1	1	Bracket and stop assembly
393	6597451P1	6597451P1	236C769P7	1	Guard
394	6443678	6591700P1	6591700P1	1	Crank
395	374A215P1	374A215P1	374A215P1	1	Crank
396	414A109P2	414A109P2	414A109P2	2	Buffer
398	6557889P4	6557889P4	6557889P4	2	Shim
399	6557889P5	6557889P5	6557889P5	1	Shim
401	6477424P5	6477424P5	6477424P5	9	Retaining ring
402	6174582G1	6174582G1	6174582G1	1	Potential trip coil (125 V d-c)
402	6174582G2	6174582G2	6174582G2	1	Potential trip coil (250 V d-c)
402	6174582G14	6174582G14	6174582G14	1	Potential trip coil (230 V a-c)
402	6275070G1	6275070G1	6275070G1	1	Potential trip coil (24 V d-c)
402	6275070G2	6275070G2	6275070G2	1	Potential trip coil (48 V d-c)

† Not furnished in this mechanism.

www.ElectricalPartManuals.com



(PHOTO 8012469)



(Photo 8020181)

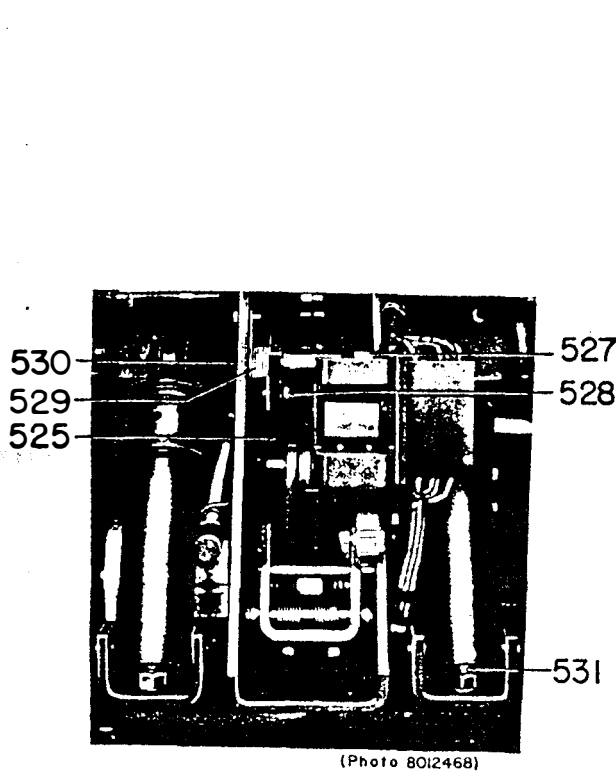
Fig. 9. Left side view of types MS-13 mechanism for the types AM-4.16-0 and -1 breakers

Fig. 9A. Left side view of type MS-13 mechanism for the type AM-4.16-2 breaker

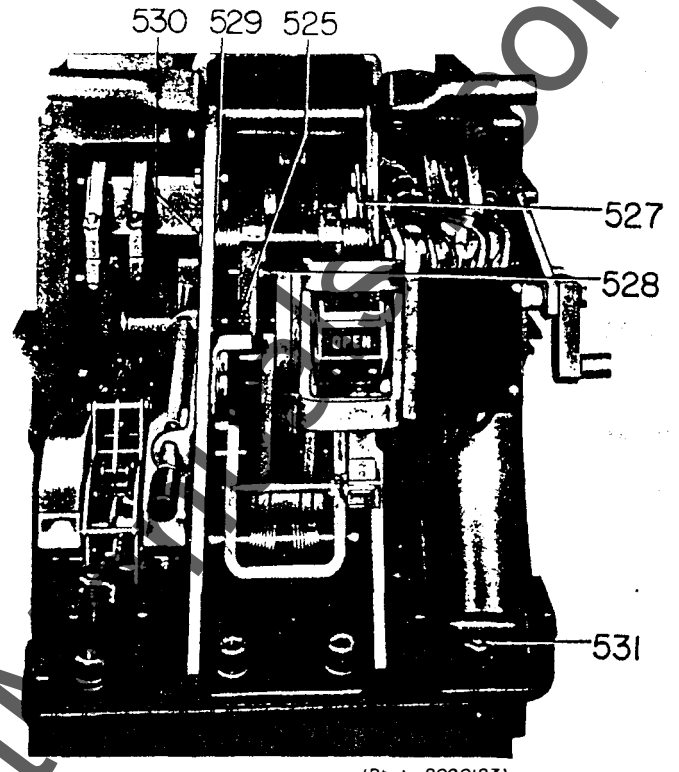
PARTS REFERENCED IN FIGS. 9 & 9A; ALL RATINGS

Ref. No.	Catalog Number for Type			No. per Mechanism	Description
	AM-4.16-(MVA)-0	AM-4.16-(MVA)-1	AM-4.16-(MVA)-2		
450	6477400P6	6477400P6	6477400P6	40	Washer
451	6477424P5	6477424P5	6477424P5	9	Retaining ring
452	6477400P5	6477400P5	6477400P5	10	Washer
453	6591635P2	6591635P2	6591635P2	6	Crank
454	6477424P6	6477424P6	6477424P6	18	Retaining ring
455	6477427CAP1	6477427CAP1	6477427CAP1	2	Pin
456	6591700P1	6591700P1	6591700P1	2	Crank
457	6597452P1	6597452P1	6597452P1	1	Cleat
458	6557103P1	6557103P1	6557103P1	1	Protector
459	6442241	6442241	6442241	2	Spacer
460	6443518P2	6443518P2	6443518P2	1	Shaft
461	6477401AAP36	6477401AAP36	6477401AAP36	2	Spacer
462	6509752	6509752	6509752	1	Spring for hand trip
463	6591705P1	6591705P1	6591705P1	1	Bracket
466	6442372P3	174V393P1	174V393P1	1	Rod
467	6477430P1	6477430P1	6477430P1	4	Groov-pin
468	6477427CAP8	6477427CAP20	6477427CAP20	1	Pin
469	6442274	6442274	6442274	1	Knob
470	6477414ADP4	6477414ADP4	6477414ADP4	1	Stud
471	6477417AAP7	6477417AAP7	6477417AAP7	2	Washer
472	6477879P6	414A109P2	414A109P2	6	Buffer
474	174V394P1	174V394P1	174V394P1	1	Tube

www.ElectricalPartManuals.com



(Photo 8012468)



(Photo 8020183)

Fig. 10. Front view of type MS-13 mechanism for types AM-4.16-0 and -1 breakers

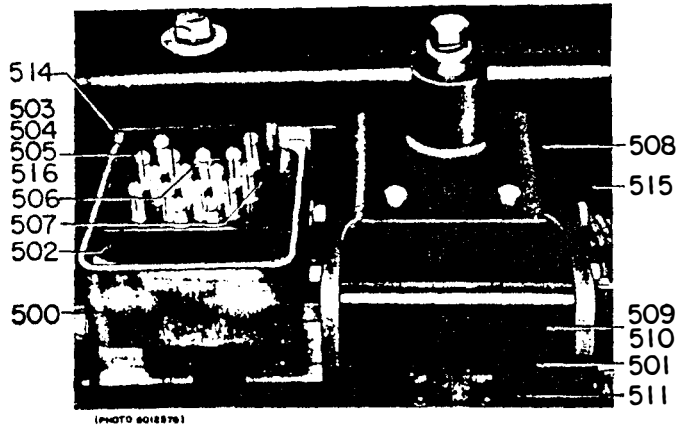
Fig. 10A. Front view of type MS-13 mechanism for the type AM-4.16-2 breaker

PARTS REFERENCED IN FIGS. 10 & 10A; ALL RATINGS

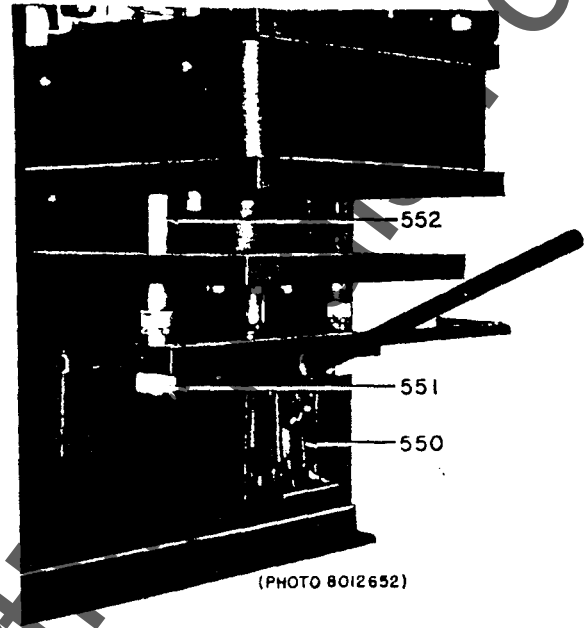
Ref. No.	Catalog Number for Type			No. per Mechanism	Description
	AM-4.16-(MVA)-0	AM-4.16-(MVA)-1	AM-4.16-(MVA)-2		
525	6443674	374A217P1	374A217P1	2	Prop
527	6477401DAP11	6477401DAP11	6477401DAP11	2	Spacer
528	383A946P1	383A946P1	383A946P1	1	Screw
529	6551734	6551734	6551734	1	Spring
530	6597224P2	374A220P1	374A220P1	1	Shaft for prop
531	6477414ACP24	6477414ACP24	6477414ACP24	2	Stud

www.ElectricalPart.com

www.ElectricalPartManuals.com



(PHOTO 8018876)



(PHOTO 8012652)

Fig. 11. Secondary disconnecting device and mechanism parts, for all types

Fig. 12. Maintenance closing device - all types

Ref. No.	Catalog Number for Type			No. per Mechanism	Description
	AM-4.16-(MVA)-0	AM-4.16-(MVA)-1	AM-4.16-(MVA)-2		

PARTS REFERENCED IN FIG. 11; ALL RATINGS

500	264B162G1	264B162G1	264B162G1	1	Secondary disc. device, complete: 16-point
500	264B173G2	264B173G2	264B173G2	2	Secondary disc. device, complete: 7-point
501	6442244	6442244	6442244	4	Shim
502	6597268AA	6597268AA	6597268AA	1	Shield
503	6319964P2	6319964P2	6319964P2	16	Plug
504	366A234P3	366A234P2	366A234P2	16	Nut for plug
505	848768P1	848768P1	848768P1	16	Lock washer for plug
506	6443717	6443717	6443717	3	Stud
507	6505244P1	6048758	6048758	1	Socket
508	6597206P1	6597206P1	6597206P1	1	Cover
509	6442239P2	6442239P2	6442239P2	2	Bearing
510	6442238	6442238	6442238	2	Bushing
511	6442243	6442243	6442243	2	Spacer
514	6557827P1	6557827P1	6557827P1	4	Shim
515	366A673P1	366A673P1	366A673P1	1	Wiring trough
516	366A234P1	366A234P1	366A234P1	4	Contact nut

PARTS REFERENCED IN FIG. 12; ALL RATINGS

550	258C669G1	258C669G1	258C669G1	1	Maintenance closing device
551	6443758	6443758	6443758	2	Nut
552	6443757	6443757	6443757	2	Stud

www.ElectricalPartManuals.com

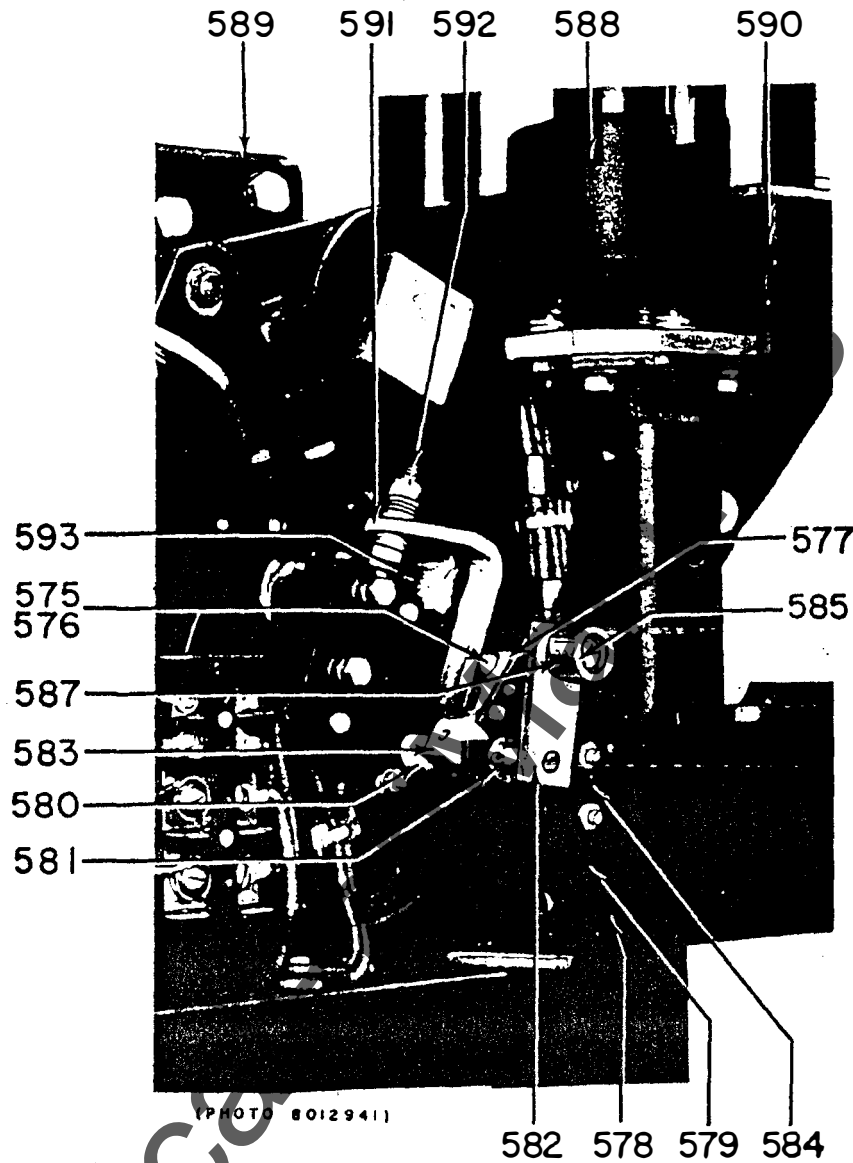
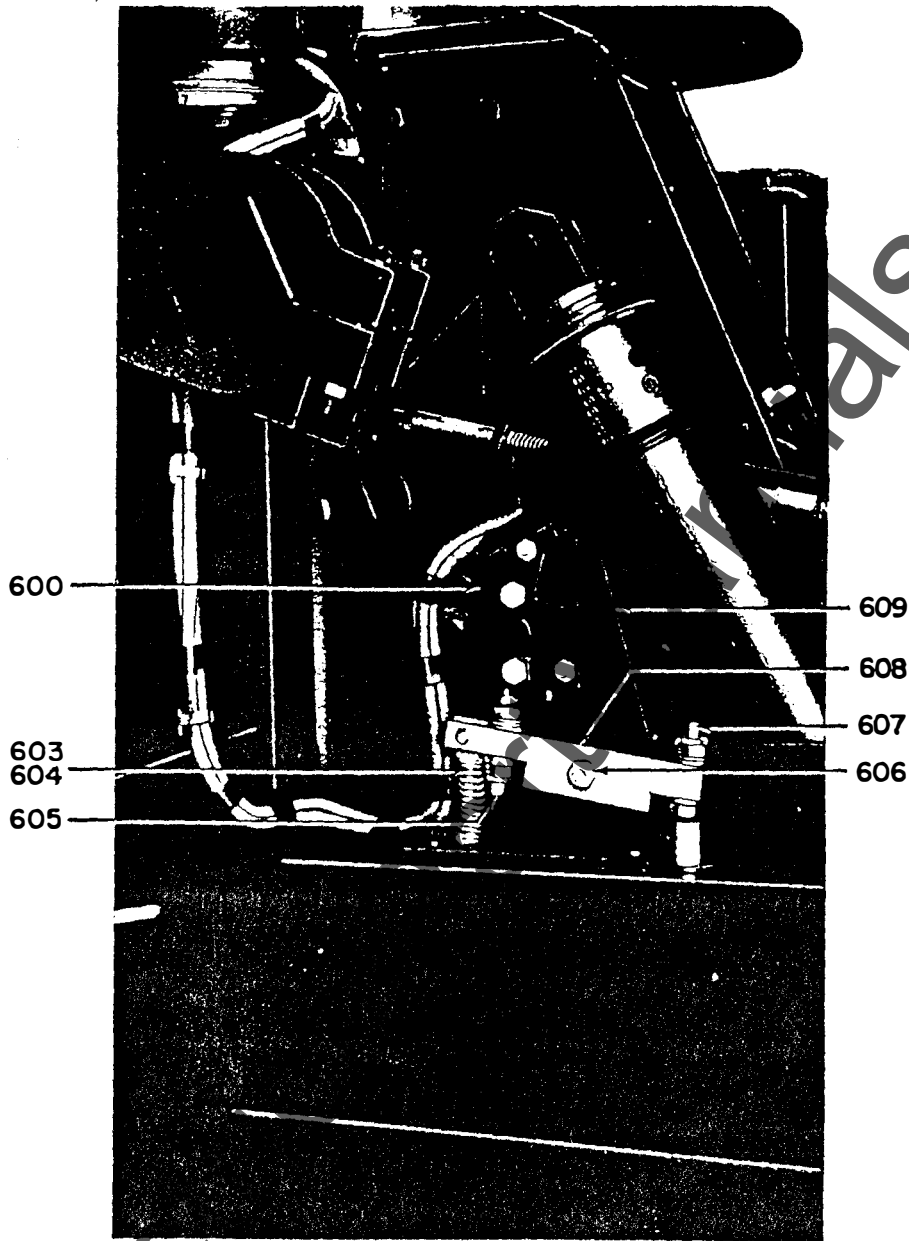


Fig. 13. Crank assembly for all mechanisms

PARTS REFERENCED IN FIG. 13; ALL RATINGS

Ref. No.	Catalog Number for Type			No. per Mechanism	Description
	AM-4, 16-(MVA)-0	AM-4, 16-(MVA)-1	AM-4, 16-(MVA)-2		
575	6445067	6445067	6445067	1	Trip bolt
576	6077731P2	6077731P2	6077731P2	1	Nut
577	175V222	175V222	175V222	1	Stop
578	6557889P3	6557889P3	6557889P3	2	Shim
579	6557055P1	6557055P1	6557055P1	1	Bracket
580	6509729	6509729	6509729	1	Spring
581	6477400P4	6477400P18	6477400P18	2	Washer
582	6557057	6557057	6557057	1	Shaft assembly
583	6597273AA	6597273AA	6597273AA	1	Spring arm
584	6597211P1	6597211P1	6597211P1	1	Stop
585	6442360P4	6442360P4	6442360P4	1	Pin for roller
586	6477400P3	6477400P3	6477400P3	1	Washer
587	6442362P4	6442362P4	6442362P4	1	Roller
588	6123179G3	6123179G3	6123179G3	2	Housing for secondary coupler
589	6445133	6445133	6445133	1	Bridge
590	6445125	6445125	6445125	2	Shim
591	6557116P1	6557116P1	6557116P1	1	Operating lever for switch
592	6477412AAP13	6477412AAP13	6477412AAP13	1	Screw
593	6477412AAP22	6477412AAP22	6477412AAP22	1	Screw

www.ElectricalPartManuals.com



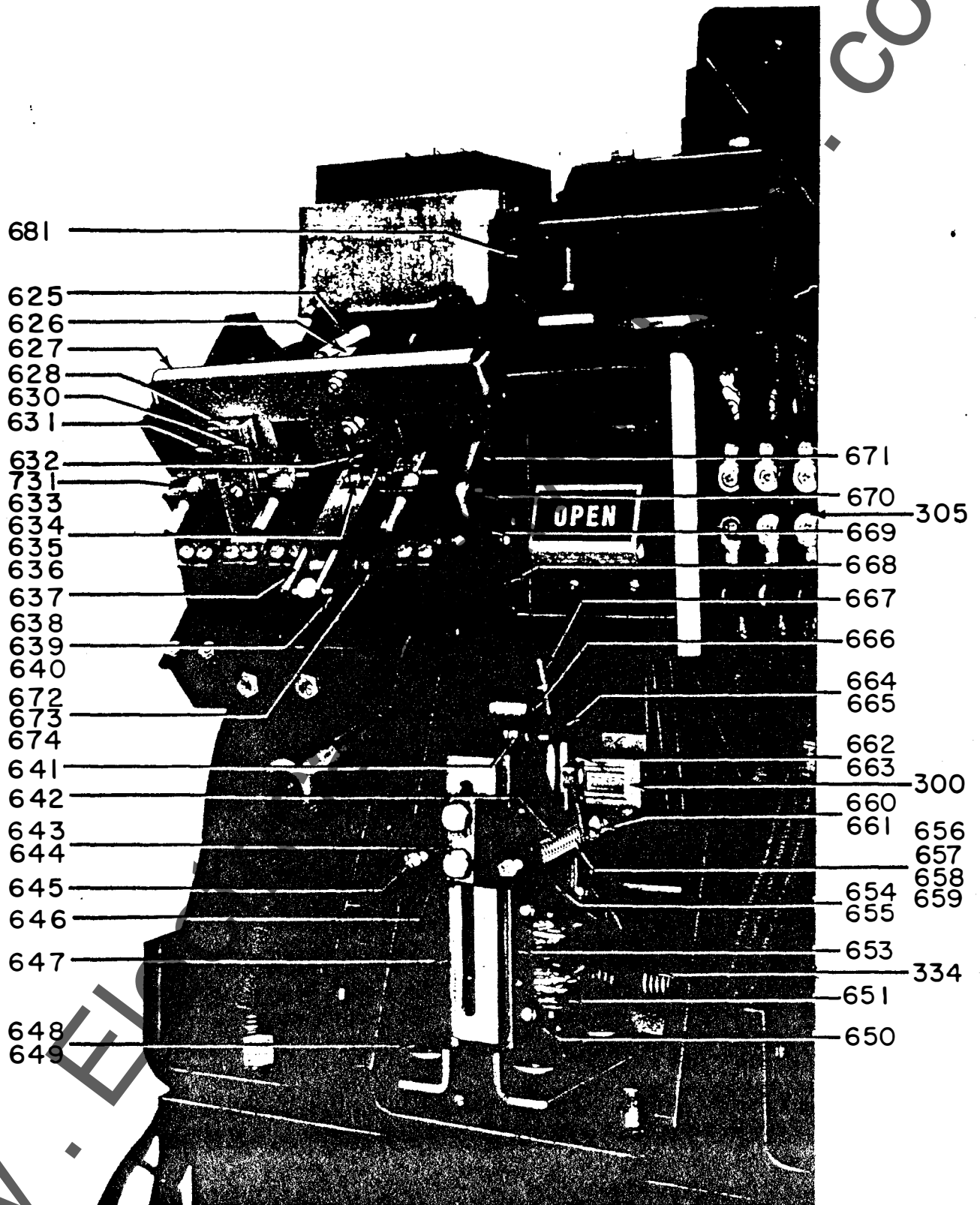
(PHOTO 011870)

Fig. 14. Manual trip and cut-off switch for all mechanisms

PARTS REFERENCED IN FIG. 14; ALL RATINGS

Ref. No.	Catalog Number for Type			No. per Mechanism	Description
	AM-4.16-(MVA)-0	AM-4.16-(MVA)-1	AM-4.16-(MVA)-2		
600	6353582G3	6353582G3	6353582G3	1	Cut off switch
603	6509794	6509794	6509794	1	Spring
604	6443658	6443658	6443658	1	Spring guide
605	6477412ABP3	6477412ABP3	6477412ABP3	1	Screw
606	6443656	6443656	6443656	1	Bushing
607	6477412AAP24	6477412AAP24	6477412AAP24	2	Screw
608	6557279P1	6557279P1	6557279P1	1	Operating lever
609	6597214P1	6597214P1	6597214P1	1	Support

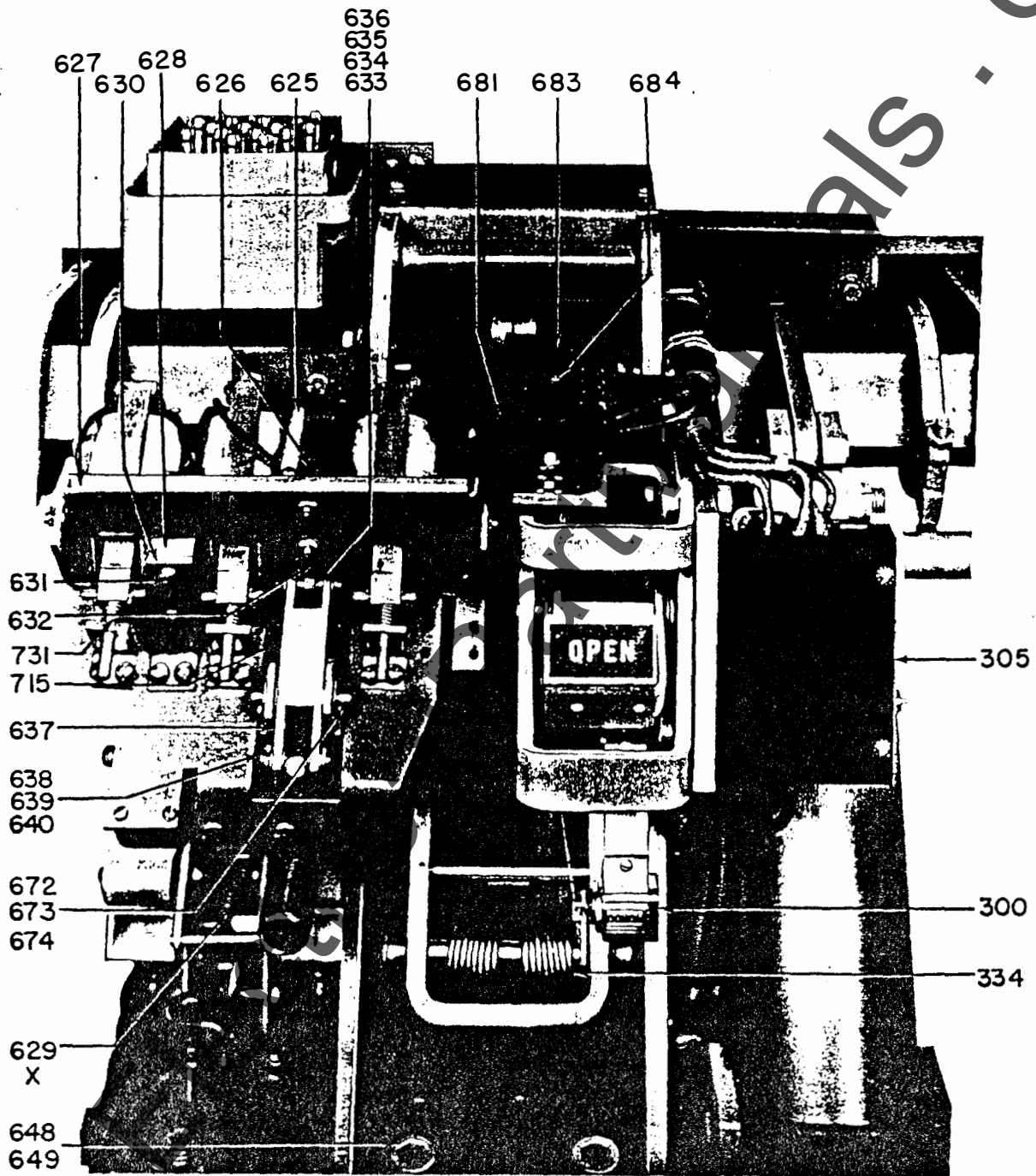
www.ElectricalPartManuals.com



(PHOTO 80125801)

Fig. 15. Front view of type MS-13 mechanism, with current trips and under-voltage device for types AM-4.16-0 and -1 breakers (for details of impact trip device, see fig. 16)

www.ElectricalPartManuals.com



(PHOTO 4020216)

Fig. 15A. Front view of type MS-13 mechanism, with current trips for type AM-4.16-2 breaker (for details of impact trip device, see fig. 16)

www.ElectricalPartManuals.com

TYPES "AM-2.4/4.16" MAGNE-BLAST AIR CIRCUIT BREAKERS

GEF-3873B

PARTS REFERENCED IN FIGS. 15 & 15A; ALL RATINGS

Ref. No.	Catalog Number for Type			No. per Mechanism	Description
	AM-4.16-(MVA)-0	AM-4.16-(MVA)-1	AM-4.16-(MVA)-2		
625	6551725	6551725	6551725	1	Spring
626	6558782P1	6558782P1	6558782P1	1	Block
627	366A611	366A611	366A611	1	Trip pan and pin
628	6558749P1	6558749P1	6558749P1	1	Retainer
629	6272844	6272844	6272844	1	Spring
630	6558764P1	6558764P1	6558764P1	1	Shim
631	6558748P1	6558748P1	6558748P1	1	Bracket
632	6558756P1	6558756P1	6558756P1	1	Trip latch
633	6477418AAP10	6477418AAP10	6477418AAP10	1	Ball bearing
634	6597449P2	6597449P2	6597449P2	1	Pin
635	6443759	6443759	6443759	2	Spacer
636	6477424P12	6477424P12	6477424P12	2	Retaining ring
637	366A600P1	366A600P1	366A600P1	1	Trip arm
638	6076401P307	6076401P307	6076401P307	1	Pin
639	6477424P1	6477424P1	6477424P1	6	Retaining ring
640	6477400P1	6477400P1	6477400P1	12	Washer
641	6477401AAP3	6477401AAP3	6477401AAP3	2	Spacer
642	6509798	6509798	6509798	2	Spring
643	6443763	6443763	6443763	1	Nut plate
644	6591388P21	6591388P21	6591388P21	1	Locking plate
645	6558730P1	6558730P1	6558730P1	2	Screw
646	6558713P1	6558713P1	6558713P1	1	Adjusting plate for spring for A-C
646	6558713P1	175V271	175V271	1	Adjusting plate for spring for D-C
647	6514924P1	6514924P1	6514924P1	1	Side plate for frame
648	6443761	6443761	6443761	4	Mounting bolt
649	6443762	6443762	6443762	8	Mounting rubber
650	6591413G1	6591413G1	6591413G1	1	Magnet frame assembly
651	6275017G20	6275017G20	6275017G20	1	Coil for D-C
651	6275017G33	6275017G33	6275017G33	1	Coil for A-C
653	6558783P1	6558783P1	6558783P1	1	Side plate for frame
654	6558741G1	6558741G1	6558741G1	1	Core assembly
655	2433013P1	2433013P1	2433013P1	2	Guide
656	6076401P311	6076401P311	6076401P311	3	Pin
657	6558721P1	6558721P1	6558721P1	1	Buffer for A-C only
658	6477401BAP5	6477401BAP5	6477401BAP5	1	Spacer for A-C only
659	6477424P1	6477424P1	6477424P1	14	Retaining ring
660	6558722P2	6558722P2	6558722P2	1	Pin for A-C only
660	6558722P1	175V275	175V275	1	Pin for D-C only
661	6477424P2	6477424P2	6477424P2	4	Retaining ring
662	6076402P311	6076402P311	6076402P311	1	Pin
663	6477400P2	6477400P2	6477400P2	2	Washer
664	6558711P1	6558711P1	6558711P1	2	Coupling
665	6076401P309	6076401P309	6076401P309	1	Pin
666	366A612G2	366A612G1	366A612G1	1	Link and pin for D-C
666	366A612G1	366A612G1	366A612G1	1	Link and pin for A-C
667	6477414ACP20	6477414ACP20	6477414ACP20	1	Stud
668	6477402AAP1	6477402AAP1	6477402AAP1	2	Pin
669	6558720P1	6558720P1	6558720P1	2	Bracket
670	6076401P301	6076401P301	6076401P301	1	Pin
671	6558723G1	6558723G1	6558723G1	1	Trip arm
672	6477427AAP8	6477427AAP8	6477427AAP8	1	Pin
673	6477424P4	6477424P4	6477424P4	2	Retaining ring
674	6477400P4	6477400P4	6477400P4	4	Washer
681	6556276G85	6556276G85	6556276G85	1	Terminal board
683	6507829P2	6507829P2	6507829P2	1	Marking strip
684	6047841	6047841	6047841	4	Screw

www.ElectricalPartManuals.com

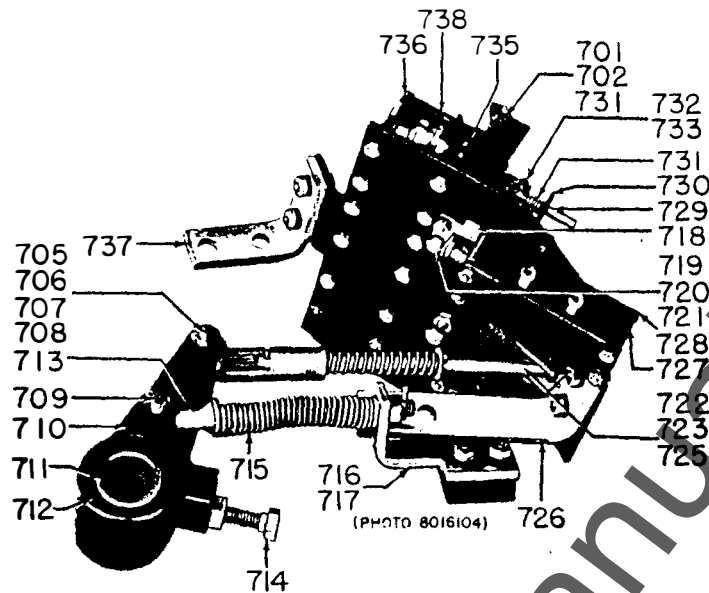


Fig. 16. Impact trip device for all mechanisms

PARTS REFERENCED IN FIG. 16; ALL RATINGS

Ref. No.	Catalog Number for Type			No. per Mechanism	Description
	AM-4. 16- (MVA)-0	AM-4. 16- (MVA)-1	AM-4. 16- (MVA)-2		
701	6477424P1	6477424P1	6477424P1	10	Retaining ring
702	6477400P1	6477400P1	6477400P1	4	Washer
705	6076403P315	6076403P315	6076403P315	1	Pin
706	6477425BAP3	6477425BAP3	6477425BAP3	1	Roller
707	6477424P3	*	*	4	Retaining ring
708	6477400P3	6477400P3	6477400P3	4	Washer
709	6477402CAP3	6076403P311	6076403P311	1	Pin
710	6592554G1	6592554G1	6592554G1	1	Crank and bushing
712	6477400P8	6477400P8	6477400P8	2	Washer
713	6558791G1	6558791G1	6558791G1	1	Eyebolt assembly
714	6557106P1	6557106P1	6557106P1	1	Screw
715	6509706	6509706	6509706	1	Spring
716	6443516	6443516	6443516	1	Bracket
717	6557105P1	6557105P1	6557105P1	1	Spacer
718	6558746P1	6558746P1	6558746P1	1	Bracket
719	6558747P1	6558747P1	6558747P1	1	Trip arm
720	6076401P315	6076401P315	6076401P315	1	Pin
721	6477401AAP3	6477401AAP3	6477401AAP3	2	Spacer
722	6509794	6509794	6509794	1	Spring
723	174V378	174V378	174V378	1	Rod
725	174V373	174V373	174V373	1	Coupling
726	6443666	6443666	6443666	1	Bracket
727	6418068G7	6418068G7	6418068G7	1	Switch
728	6592505AA	6592505AA	6592505AA	1	Frame assembly
729	6558752G1	6558752G1	6558752G1	3	Core assembly
730	6558751P1	6558751P1	6558751P1	3	Angle
731	6049320	6049320	6049320	9	Felt washer
732	6557068P9	6557068P9	6557068P9	3	Pin
733	6477424P1	6477424P1	6477424P1	6	Retaining ring
734	6076401P385	6076401P385	6076401P385	1	Pin
735	2236575	*	*	6	Guide
736	4905058G4	4905058G4	4905058G4	1	Armature frame
737	6443667	6443667	6443667	1	Bracket
738	6174599G2	6174599G2	6174599G2	3	Coil for current trip 3 amp AC
738	6174599G6	6174599G6	6174599G6	1	Coil for capacitor trip 230V AC

* Not furnished in these breakers.

www.ElectricalPartManuals.com

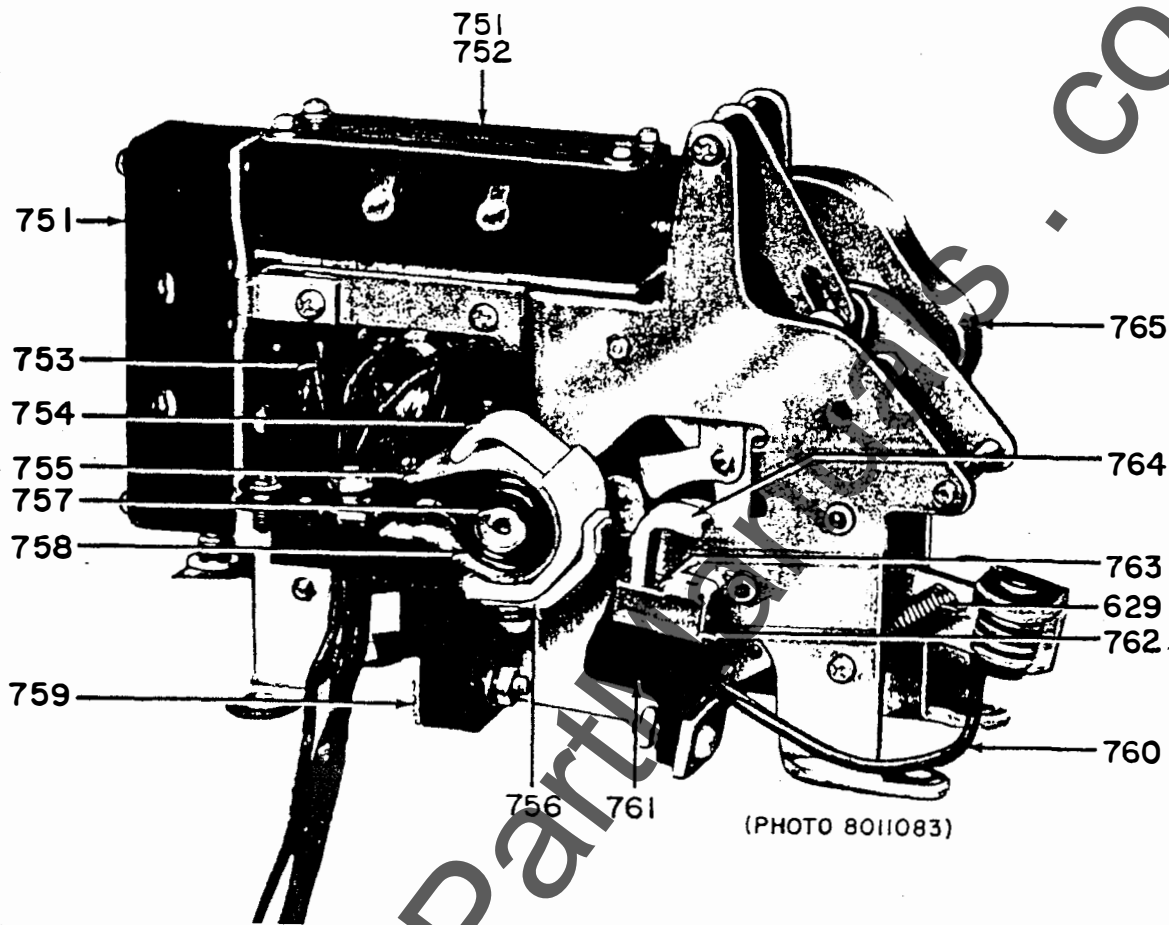


Fig. 17. Control device for all mechanisms (ref. no. 750)

PARTS REFERENCED IN FIG. 17; ALL RATINGS

Ref. No.	Catalog Number for Type			No. per Mechanism	Description
	AM-4, 16-(MVA)-0	AM-4, 16-(MVA)-1	AM-4, 16-(MVA)-2		
750	6375988G5	6375988G5	6375988G5	1	Control device, 125-volt, D-C
750	6375988G8	6375988G8	6375988G8	1	Control device, 220-volt, D-C
750	6375988G6	6375988G6	6375988G6	1	Control device, 250-volt, D-C
750	6375988G9	6375988G9	6375988G9	1	Control device, 230-volt, A-C
751	6418068G6	6418068G6	6418068G6	1	Auxiliary switch, top or back
752	6418068G5	6418068G5	6418068G5	1	Auxiliary switch, top, 230-volt, A-C only
753	6275017G19	6275017G19	6275017G19	1	Coil, 125-volt, D-C
753	6275017G31	6275017G31	6275017G31	1	Coil, 220-volt, D-C
753	6275017G20	6275017G20	6275017G20	1	Coil, 250-volt, D-C
753	6275017G34	6275017G34	6275017G34	1	Coil, 230-volt, A-C
754	6591455P1	6591455P1	6591455P1	2	Support for contact tip
755	6442392P1	6442392P1	6442392P1	2	Insulation
756	6591411G1	6591411G1	6591411G1	2	Support for stationary contact
757	6591450P1	6591450P1	6591450P1	2	Core
758	6412255P1	6412255P1	6412255P1	2	Blowout coil
759	6412251P1	6412251P1	6412251P1	2	Support for coil
760	6591440G1	6591440G1	6591440G1	1	Connector
761	6592161P1	6592161P1	6592161P1	2	Support for movable contact
762	6592162P1	6592162P1	6592162P1	2	Shield
763	6477041P1	6477041P1	6477041P1	2	Spring
764	6591412G1	6591412G1	6591412G1	2	Movable contact
765	6591404G1	6591404G1	6591404G1	2	Arc chute assembly

www.ElectricalPartManuals.com

www.ElectricalPartManuals.com

www.ElectricalPartManuals.com