



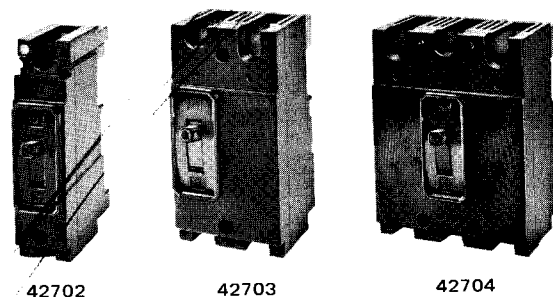
**ET® E-FRAME CIRCUIT BREAKERS**  
 1-POLE • 120 VOLTS AC • 125 VOLTS DC  
 2, 3-POLE • 240 VOLTS AC • 125/250 VOLTS DC  
 15-100 AMPERES NON-INTERCHANGEABLE TRIP UNIT  
 40C CALIBRATION ①

**FEATURES**

- Thermal-magnetic circuit protection.
- Quick-make, Quick-break, Trip-free Mechanism.
- Connections: Pressure wire connectors; rear-connected, front removable studs; plug-in mounting arrangements.
- Meets requirements of Federal Specification W-C-375, as a Class 2A, 2B and 2C breaker.
- Common Trip.
- Listed by Underwriters' Laboratories, Inc.

**INTERRUPTING RATINGS**  
 (Based on NEMA Test Procedures)

Voltage		Amperes	
		Asymmetrical	Symmetrical
AC	1-pole 120	7,500	7,500
	2, 3-pole 240	10,000	10,000
DC	1-pole 125	5,000	
	2, 3-poles 125/250	5,000	



**ACCESSORIES AND MODIFICATIONS †**  
 (To order, specify by description and/or catalog number)

PRICING						
Rating Amperes	Cat. No.	List Price*	Packaging		List Price, Ship. Pkg.	Weight Lb. Ship. Pkg.
			Carton	Ship. Pkg.		
<b>ONE POLE 120 VOLTS AC • 125 VOLTS DC</b>						
15	EE1-B015	\$14.00	6	30	\$420.00	38
20	EE1-B020					
25	EE1-B025					
30	EE1-B030					
35	EE1-B035					
40	EE1-B040					
45	EE1-B045					
50	EE1-B050					
60	EE1-B060					
70	EE1-B070					
80	EE1-B080					
90	EE1-B090					
100	EE1-B100					
<b>TWO POLE 240 VOLTS AC • 125/250 VOLTS DC</b>						
15	EE2-B015	36.00	1	10	360.00	23 3/4
20	EE2-B020					
30	EE2-B030					
40	EE2-B040					
50	EE2-B050					
60	EE2-B060					
70	EE2-B070	57.00			570.00	
90	EE2-B090					
100	EE2-B100					
100†	EE2-S100	36.00			360.00	
<b>THREE POLE 240 VOLTS AC</b>						
15	EE3-B015	51.00	1	10	510.00	37 3/4
20	EE3-B020					
30	EE3-B030					
40	EE3-B040					
50	EE3-B050					
60	EE3-B060					
70	EE3-B070	75.00			750.00	
90	EE3-B090					
100	EE3-B100					
100†	EE3-S100	51.00			510.00	

\*Price includes load-end pressure wire connectors. Wire range is single cable #14-#1/0 AWG (Cu), #12-#1/0 AWG (Al) (Cat. No. TA1-E100). Load-end wire binding screws, (Cat. No. TA1-E010), are furnished with breakers rated below 30 amperes. These binding screws have a single-cable wire range of #14-#10 AWG (Cu/Al). If line-end connectors are required, specify by catalog number, at no additional charge. Refer to Section 2.6.5, Page 3 for other connectors available.

① Available (not listed with U/L) calibrated for ambient temperature of 50°C. No Change in Price.

†Non-automatic circuit interrupter (disconnect device only)

Description	List Price Each
<input type="checkbox"/> Auxiliary switch (available in two and three pole only) specify "A" and/or "B" contact	\$34.50
<input type="checkbox"/> Shunt trip (available in three pole only)	86.00
<input type="checkbox"/> Undervoltage trip (available in two and three pole only)	86.00
<input type="checkbox"/> Alarm switch (available in two and three pole only)	34.50
<input type="checkbox"/> Center studs	1-pole 7.50 2-pole 13.00 3-pole 16.50
<input type="checkbox"/> Fungus proofing	1-pole 5.50 2-pole 7.50 3-pole 10.00
Handle blocking device (Cat. No. EFL-1)	.60
Padlocking device (Cat. No. HL-2779)	1.90
<input type="checkbox"/> Mechanical interlock - walking beam type For mounting on 1/8" steel plate (Cat. No. MI-5476) For use with plug-in mounting (Cat. No. MI-5478)	80.00
Plug-in mounting assembly	
2P (line side Cat. No. PC-1584) (load side Cat. No. PC-1586)	14.50
3P (line side Cat. No. PC-1585) (load side Cat. No. PC-1587)	20.00
Steel switchboard mounting plate for use with plug-in mounting assembly 2P (Cat. No. PL-2611) 3P (Cat. No. PL-2612)	**
<input type="checkbox"/> Automatic trip interlock (used with plug-in mounting assembly) 3-pole only	76.00
Rear-connecting studs (two required per pole)	
50A 1, 2, 3-pole Line side 3 inch ext. (Cat. No. RS-1501)	3.00
50A 1-pole Load side 3 inch ext. (Cat. No. RS-1503)	
50A 2, 3-pole Load side 3 inch ext. (Cat. No. RS-1505)	
100A 1, 2, 3 pole Line side 3 3/4 inch ext. (Cat. No. RS-1502)	
100A 1-pole Load side 3 3/4 inch ext. (Cat. No. RS-1504)	6.50
100A 2, 3-pole Load side 3 3/4 inch ext. (Cat. No. RS-1506)	
Telemand remote-control motor operator	
Individual mounted 120V ac (Cat. No. TO1-E120)	137.00
240V ac (Cat. No. TO1-E240)	137.00
480V ac (Cat. No. TO1-E480)	188.00
Panelboard mounted 120V ac (Cat. No. TO2-E120)	132.00
240V ac (Cat. No. TO2-E240)	132.00
480V ac (Cat. No. TO2-E480)	181.00
Rotary Handle - standard depth - (Cat. No. OH-2792)	17.50
Rotary Handle - variable depth (3 inch ext. Cat. No. VH-2793-3) (5 inch ext. Cat. No. VH-2793-5) (7 inch ext. Cat. No. VH-2793-7) (9 inch ext. Cat. No. VH-2793-9)	23.50

† For additional information and accessories see Section 2.6.5 pgs 1-21.

① Voids U/L listing.

\*\*Furnished at no charge when ordered with plug-in mounting assembly. For enclosure information see Section 2.7.5 pages 1-2.





**ET® EH-FRAME CIRCUIT BREAKERS**

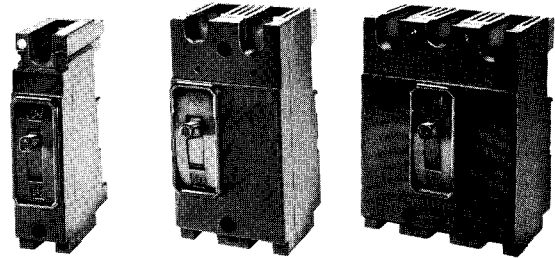
**1-POLE • 277 VOLT AC • 2, 3-POLE • 480 VOLTS AC • 250 VOLTS DC**  
**15-150 AMPERES • NON-INTERCHANGEABLE TRIP UNIT • 40C CALIBRATION**

**FEATURES**

- Thermal-magnetic circuit protection.
- Connections: Pressure wire connectors; rear-connected, front-removable studs; plug-in mounting arrangements.
- Common Trip.
- Meets requirements of Federal Specification W-C-375, as a Class 2D breaker.
- Quick-make, Quick-Break, Trip-Free Mechanism.
- Listed by Underwriters' Laboratories, Inc.

**INTERRUPTING RATINGS  
 (Based on NEMA Test Procedures)**

Voltage		Amperes	
		Asymmetrical	Symmetrical
AC	1P	120	22,000
		277	20,000
	2, 3P	240	20,000
		480	18,000
DC		250	



**MODIFICATIONS & ACCESSORIES‡  
 (To Order, Specify by Description and/or Catalog Number)**

Description	List Price Each
<input type="checkbox"/> Auxiliary switch — specify "A" and/or "B" contact (available in two or three pole only)	<b>\$34.50</b>
<input type="checkbox"/> Shunt trip (available in three pole construction only)	<b>86.00</b>
<input type="checkbox"/> Undervoltage trip (available in two and three pole only)	<b>86.00</b>
<input type="checkbox"/> Alarm switch (available in two and three pole only)	<b>34.50</b>
<input type="checkbox"/> Center studs	<b>42.50</b>
<input type="checkbox"/> Fungus proofing	1 pole <b>5.50</b> 2 pole <b>7.50</b> 3 pole <b>10.00</b>
<input type="checkbox"/> Clear-sight breaker cover (two and three pole only)	♦
Handle blocking device (Cat. No. EFL-1)	<b>.60</b>
Padlocking device (Cat. No. HL-2779)	<b>1.90</b>
<input type="checkbox"/> Mechanical interlock — walking beam type For mounting on 1/8" steel plate (Cat. No. MI-5476) For use with plug-in mounting (Cat. No. MI-5478)	<b>80.00</b>
Plug-in mounting assembly 2P (Line side Cat. No. PC-2650) (Load side Cat. No. PC-2649)	<b>14.50</b>
3P (Line side Cat. No. PC-2652) (Load side Cat. No. PC-2651)	<b>20.00</b>
Steel switchboard mounting plate for use with plug-in mounting assembly 2P (Cat. No. PL-2611) 3P (Cat. No. PL-2612)	<b>**</b>
<input type="checkbox"/> Automatic trip interlock (used with plug-in mounting assembly) 3-Pole only	<b>76.00</b>
<input checked="" type="checkbox"/> Rear-connecting studs (two required per pole) Line side 2-15/16 inch extension (Cat. No. RS-2647) Load side 2-15/16 inch extension (Cat. No. RS-2648)	<b>6.00</b>
Line side 4-13/16 inch extension (Cat. No. RS-2645) Load side 4-13/16 inch extension (Cat. No. RS-2646)	<b>6.50</b>
Telemand® remote-control operator Individual mounted 120V ac (Cat. No. TO1-E120) 240V ac (Cat. No. TO1-E240)	<b>137.00</b> <b>137.00</b>
Panelboard mounted 120V ac (Cat. No. TO2-E120) 240V ac (Cat. No. TO2-E240)	<b>132.00</b> <b>132.00</b>
Rotary handle — standard depth (Cat. No. OH-2792)	<b>17.50</b>
Rotary handle — variable depth (3 inch ext. Cat. No. VH-2793-3) (5 inch ext. Cat. No. VH-2793-5) (7 inch ext. Cat. No. VH-2793-7) (9 inch ext. Cat. No. VH-2793-9)	<b>23.50</b>

Rating, Amperes	Cat. No.	List Price*	Packaging		List Price Ship. Pkg.	Weight, Lb. Ship. Pkg.
			Carton	Ship. Pkg.		
<b>ONE POLE 277 VOLTS AC</b>						
15	EH1-B015	<b>\$18.00</b>	6	30	<b>\$540.00</b>	38
20	EH1-B020					
30	EH1-B030					
40	EH1-B040					
50	EH1-B050					
70	EH1-B070	<b>32.50</b>			<b>975.00</b>	
90	EH1-B090					
100	EH1-B100					
<b>TWO POLE 480 VOLTS AC • 250 VOLTS DC</b>						
15	EH2-B015	<b>64.00</b>	1	10	<b>640.00</b>	23¼
20	EH2-B020					
30	EH2-B030					
40	EH2-B040					
50	EH2-B050					
60A	EH2-B060					
70	EH2-B070	<b>82.00</b>			<b>820.00</b>	
90	EH2-B090					
100	EH2-B100					
100†	EH2-S100	<b>57.00</b>			<b>570.00</b>	
110	EH2-B110	<b>185.00</b>			<b>1850.00</b>	
125	EH2-B125	<b>185.00</b>				
150	EH2-B150	<b>185.00</b>				
<b>THREE POLE 480 VOLTS AC</b>						
15	EH3-B015	<b>82.00</b>	1	10	<b>820.00</b>	37¼
20	EH3-B020					
30	EH3-B030					
40	EH3-B040					
50	EH3-B050					
60	EH3-B060					
70	EH3-B070	<b>98.00</b>			<b>980.00</b>	
90	EH3-B090					
100	EH3-B100					
100†	EH3-S100	<b>75.00</b>			<b>750.00</b>	
110	EH3-B110	<b>230.00</b>			<b>2300.00</b>	
125	EH3-B125	<b>230.00</b>				
150	EH3-B150	<b>230.00</b>				

\* Price includes load-end pressure wire connectors. Wire range from 30-100 amperes is single cable #14-#1/0 AWG (Cu), #12-#1/0 AWG (Al) (Cat. No. TA1-E100). Wire range from 110-150 amperes is single cable #1-3/0 Al/Cu Cat. #TA1-E150. Load-end wire binding screws, (Cat. No. TA1-E010), are furnished with breakers rated below 30 amperes. These binding screws have a single-cable wire range of #14-#10 AWG (Cu/Al). If line-end connectors are required, specify by catalog number, at no additional charge. Refer to Section 2.6.5, Page 3 for other connectors available.  
 † Available (not listed with U/L) calibrated for Ambient temperature of 50°C. No Change in price.

† Non-automatic circuit interrupter (Disconnect Device only).

‡ For additional information and accessories see Section 2.6.5 pgs 1-21.  
 ♦ Voids U/L listing.  
 ♦ Furnished at no charge when ordered with the breaker.  
 \*\*Furnished at no charge when ordered with plug-in mounting assembly.  
 † For proper electrical clearance on 3-pole breakers, use long studs for the outer poles and short studs for the center pole.  
 For enclosure information see Section 2.7.5 pages 1-2.

42702  
 42703  
 42704

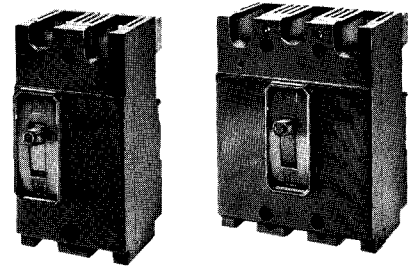




**ET® EF-FRAME CIRCUIT BREAKERS**  
**2, 3-POLE • 600 VOLTS AC • 250 VOLTS DC**  
**15-100 AMPERES NON-INTERCHANGEABLE TRIP UNIT**  
**40C CALIBRATION<sup>Ⓞ</sup>**

**FEATURES**

- Thermal-magnetic circuit protection.
- Connections: Pressure wire connectors; rear-connected, front-removable studs; plug-in mounting arrangements.
- Meets requirements of Federal Specification W-C-375, as a Class 2D breaker.
- Common Trip.
- Quick-make, Quick-break, Trip-free Mechanism.
- Listed Underwriters' Laboratories, Inc.



**INTERRUPTING RATINGS**  
 (Based on NEMA Test Procedures)

	Voltage	Amperes	
		Asymmetrical	Symmetrical
<b>A C</b>	240	20,000	18,000
	480	15,000	14,000
	600	15,000	14,000
<b>D-C</b>	250	10,000	

**PRICING**

Rating Amperes	Cat. No.	List Price*	Packaging		List Price Ship. Pkg.	Weight, Lb. Ship. Pkg.
			Carton	Ship. Pkg.		
<b>TWO POLE 600 VOLTS AC • 250 VOLTS DC</b>						
15	EF2-B015	\$ 75.	1	10	\$750.	23 3/4
20	EF2-B020					
25	EF2-B025					
30	EF2-B030					
35	EF2-B035					
40	EF2-B040					
45	EF2-B045	95.			950.	
50	EF2-B050					
60	EF2-B060					
70	EF2-B070					
80	EF2-B080	75.			750.	
90	EF2-B090					
100	EF2-B100					
100†	EF2-S100					
<b>THREE POLE 600 VOLTS AC</b>						
15	EF3-B015	96.	1	10	960.	37 3/4
20	EF3-B020					
25	EF3-B025					
30	EF3-B030					
35	EF3-B035					
40	EF3-B040					
45	EF3-B045	117.			1170.	
50	EF3-B050					
60	EF3-B060					
70	EF3-B070					
80	EF3-B080	96.			960.	
90	EF3-B090					
100	EF3-B100					
100†	EF3-S100					

\*Price includes load-end pressure wire connectors. Wire range is single cable #14-#1/0 AWG (Cu), #12-#1/0 AWG (Al) (Cat. No. TA1-E100). Load-end wire binding screws, (Cat. No. TA1-E010), are furnished with breakers rated below 30 amperes. These binding screws have a single-cable wire range of #14-#10 AWG (Cu/Al). If line-end connectors are required, specify by catalog number, at no additional charge. Refer to Section 2.6.5, Page 3 for other connectors available.

Ⓞ Available (not listed with U/L) calibrated for Ambient temperature of 50 °C. No Change in price.

†Non-automatic circuit interrupter (Disconnect Device only).

**MODIFICATIONS & ACCESSORIES‡**  
 (To Order, Specify by Description and/or Catalog Number)

Description	List Price Each
<input type="checkbox"/> Auxiliary switch — specify "A" and/or "B" contact	\$34.50
<input type="checkbox"/> Shunt trip (available in three-pole construction only)	86.00
<input type="checkbox"/> Undervoltage trip	86.00
<input type="checkbox"/> Alarm switch	34.50
<input type="checkbox"/> Center studs	42.50
<input type="checkbox"/> Fungus proofing	2-pole 7.50 3-pole 10.00
<input type="checkbox"/> Clear-sight breaker cover	♦
Handle blocking device (Cat. No. EFL-1)	.60
Padlocking device (Cat. No. HL-2779)	1.90
<input type="checkbox"/> Mechanical interlock — walking beam type For mounting on 1/8" steel plate (Cat. No. MI-5476) For use with plug-in mounting (Cat. No. MI-5478)	80.00
Plug-in mounting assembly 2P (line side Cat. No. PC-2650) (load side Cat. No. PC-2649)	14.50
3P (line side Cat. No. PC-2652) (load side Cat. No. PC-2651)	20.00
Steel switchboard mounting plate for use with plug-in mounting assembly 2P (Cat. No. PL-2611) 3P (Cat. No. PL-2612)	**
<input type="checkbox"/> Automatic trip interlock (used with plug-in mounting assembly) 3-Pole	76.00
<input checked="" type="checkbox"/> Rear-connecting studs (two required per pole) Line side 2-15/16 inch extension (Cat. No. RS-2647) Load side 2-15/16 inch extension (Cat. No. RS-2648)	6.00
Line side 4-13/16 inch extension (Cat. No. RS-2645) Load side 4-13/16 inch extension (Cat. No. RS-2646)	6.50
Telemand <sup>Ⓢ</sup> remote-control operator Individual mounted 120V ac (Cat. No. TO1-E120) 240V ac (Cat. No. TO1-E240)	137.00 137.00
Panelboard mounted 120V ac (Cat. No. TO2-E120) 240V ac (Cat. No. TO2-E240)	132.00 132.00
Rotary handle — standard depth (Cat. No. OH-2792)	17.50
Rotary handle — variable depth (3 inch ext. Cat. No. VH-2793-3) (5 inch ext. Cat. No. VH-2793-5) (7 inch ext. Cat. No. VH-2793-7) (9 inch ext. Cat. No. VH-2793-9)	23.50

‡ For additional information and accessories see Section 2.6.5 pgs 1-21.

Ⓞ Voids U/L listing.

♦ Furnished at no charge when ordered with the breaker.

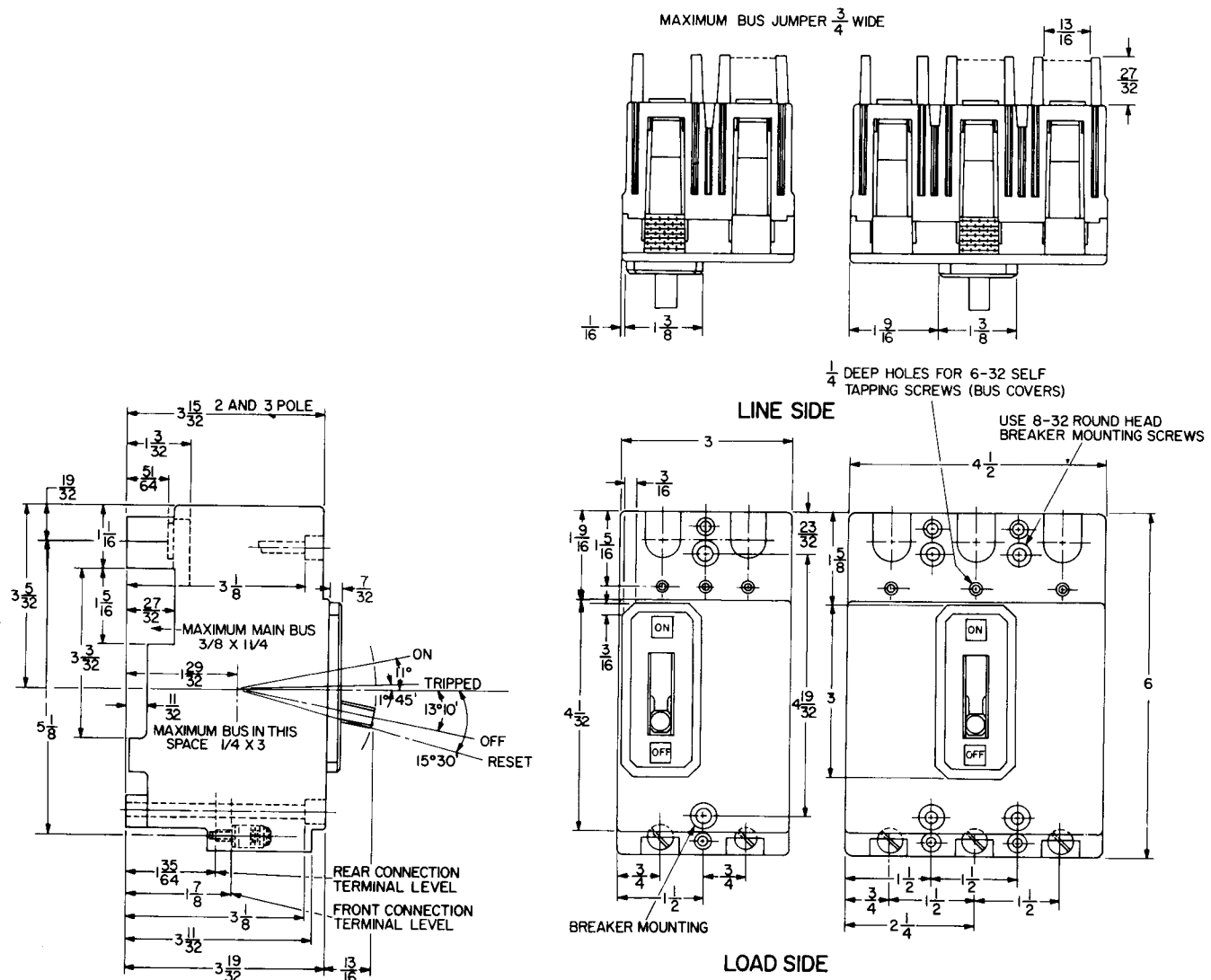
\*\*Furnished at no charge when ordered with plug-in mounting assembly.

Ⓢ For proper electrical clearance on 3-pole breakers, use long studs for the outer poles and short studs for the center pole. For enclosure information see Section 2.7.5 pages 1-2.

42703  
42704



ET<sup>®</sup> EF-FRAME CIRCUIT BREAKERS  
DIMENSIONS



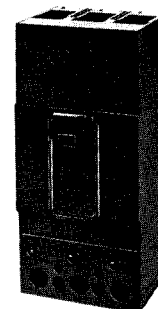


**ET® FJ-FRAME CIRCUIT BREAKERS**

2, 3-POLE • 600 VOLTS AC • 250 VOLTS DC  
 70-225 AMPERES NON-INTERCHANGEABLE TRIP UNIT  
 40C CALIBRATION<sup>⊙</sup>

**FEATURES**

- Thermal-magnetic circuit protection.
- Front-adjustable trip unit with five instantaneous trip settings.
- Connections: Pressure wire connectors; rear-connected, front-removable studs; plug-in mounting arrangements.
- Meets requirements of Federal Specification W-C-375, as a Class 3A breaker.
- Common trip.
- Quick-make, Quick-break, Trip-free mechanism.
- Listed by Underwriters' Laboratories, Inc.



42705

**INTERRUPTING RATINGS**  
 (Based on NEMA Test Procedures)

Voltage		Amperes	
		Asymmetrical	Symmetrical
A C	240	25,000	22,000
	480	20,000	18,000
	600	15,000	14,000
D C	250	10,000	

**PRICING**

Rating, Amperes	Instantaneous Trip Range		Cat. No.	List Price*	Ship. Wgt. Lb.
	Low	High			
<b>TWO POLE 600 VOLTS AC • 250 VOLTS DC</b>					
70	750	1600	FJ2-B070	<b>\$213.00</b>	7
80	750	1600	FJ2-B080		
90	750	1600	FJ2-B090		
100	750	1600	FJ2-B100		
110	750	1600	FJ2-B110		
125	750	1600	FJ2-B125	<b>\$213.00</b>	7
150	750	1600	FJ2-B150		
175	750	1600	FJ2-B175		
200	960	2000	FJ2-B200		
225	960	2000	FJ2-B225		
225†	—	—	FJ2-S225	<b>170.00</b>	
<b>THREE POLE 600 VOLTS AC</b>					
70	750	1600	FJ3-B070	<b>264.00</b>	9
80	750	1600	FJ3-B080		
90	750	1600	FJ3-B090		
100	750	1600	FJ3-B100		
110	750	1600	FJ3-B110		
125	750	1600	FJ3-B125	<b>264.00</b>	9
150	750	1600	FJ3-B150		
175	750	1600	FJ3-B175		
200	960	2000	FJ3-B200		
225	960	2000	FJ3-B225		
225†	—	—	FJ3-S225	<b>213.00</b>	

**MODIFICATIONS & ACCESSORIES‡**  
 (To order, specify by description and/or catalog number)

DESCRIPTION	LIST PRICE EACH
<input type="checkbox"/> Auxiliary switch - specify "A" and/or "B" contact	<b>\$34.50</b>
<input type="checkbox"/> Shunt trip	<b>86.00</b>
<input type="checkbox"/> Undervoltage trip	<b>86.00</b>
<input type="checkbox"/> Alarm switch	<b>34.50</b>
<input type="checkbox"/> Center studs	<b>76.00</b>
<input type="checkbox"/> Fungus proofing	<b>15.50</b>
<input type="checkbox"/> Clear-sight breaker cover	<b>♦</b>
Handle blocking device (Cat. no. FJL-1)	<b>1.20</b>
<input type="checkbox"/> Mechanical interlock - walking beam type For mounting on 1/8" steel plate (Cat. no. MI-5425) For use with plug-in mounting (Cat. no. MI-5442)	<b>80.00</b>
Plug-in mounting assembly 2P line or load side (Cat. no. PC-4751)	<b>29.00</b>
3P line or load side (Cat. no. PC-4752)	<b>34.50</b>
Steel switchboard mounting plate for use with plug-in mounting assembly 2- or 3-pole (Cat. no. PL-4761)	<b>**</b>
<input type="checkbox"/> Automatic trip interlock (use with plug-in mounting assembly) 3-pole	<b>76.00</b>
<input checked="" type="checkbox"/> Rear-connecting studs (two required per pole) 3/4 inch extension (Cat. no. RS-4754)	<b>8.50</b>
7-3/16 inch extension (Cat. no. RS-4753)	<b>12.00</b>
Telemand® remote-control operator* Individual mounted 120V ac (Cat. no. T01-F120) 240V ac (Cat. no. T01-F240)	<b>428.00</b>
Panelboard mounted 120V ac (Cat. no. T02-F120) 240V ac (Cat. no. T02-F240)	<b>397.00</b>
Rotary handle - standard depth (Cat. no. OH-4762)	<b>17.50</b>
Rotary handle - variable depth (3 inch ext. Cat. no. VH-4763-3) (5 inch ext. Cat. no. VH-4763-5) (7 inch ext. Cat. no. VH-4763-7) (9 inch ext. Cat. no. VH-4763-9)	<b>23.50</b>

\* Price includes load-end pressure wire connectors. Wire range is single cable # 4 AWG-300 MCM (Cu or Al) (Cat. No. TA1-F300). If line-end connectors are required, specify the catalog number, at no additional charge. Refer to Section 2.6.5, Page 3 for other connectors available.

† Non-automatic circuit interrupter (disconnect device only).

⊙ Available (not listed with U/L) calibrated for ambient temperature of 50°C. No change in price.

‡ For additional information and accessories see Section 2.6.5 pgs. 1-21.

♦ Voids U/L listing.

♦ Furnished at no charge when ordered with the breaker.

\*\*Furnished at no charge when ordered with the plug-in mounting assembly.

\* For DC applications, contact the nearest I-T-E sales office.

■ For proper electrical clearance on 3-pole breakers, use long studs for outer poles and short studs for center pole.

For enclosure information see Section 2.7.5 pgs. 1-2.



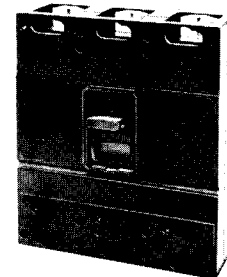


**ET® JJ-FRAME CIRCUIT BREAKERS**

**2,3-POLE • 600 VOLTS AC • 250 VOLTS DC**  
**250-400 AMPERES NON-INTERCHANGEABLE TRIP UNIT**  
**40C CALIBRATION<sup>Ⓞ</sup>**

**FEATURES**

- Thermal-magnetic circuit protection.
- Front-adjustable trip unit with five instantaneous trip settings.
- Connections: Pressure wire connectors; rear-connected, front-removable studs; plug-in mounting arrangements.
- Meets requirements of Federal Specification W-C-375, as a Class 4B breaker.
- Common trip.
- Quick-make, Quick-break, Trip-free mechanism.
- Listed by Underwriters' Laboratories, Inc.



42706

**INTERRUPTING RATINGS**

(Based on NEMA Test Procedures)

Voltage		Amperes	
		Asymmetrical	Symmetrical
A C	240	50,000	42,000
	480	35,000	30,000
	600	25,000	22,000
D C	250	20,000	

**PRICING**

Rating, Amperes	Instantaneous Trip Range		Complete Breaker		
	Low	High	Cat. No.	List Price*	Ship. Wgt., Lb.
<b>2-POLE 600 VOLTS AC • 250 VOLTS DC</b>					
250	1050	2250	JJ2-B250	\$377.	18
300	1050	2250	JJ2-B300		
350	1900	3500	JJ2-B350		
400	1900	3500	JJ2-B400		
400†	—	—	JJ2-S400	285.	
<b>3-POLE 600 VOLTS AC</b>					
250	1050	2250	JJ3-B250	459.	20½
300	1050	2250	JJ3-B300		
350	1900	3500	JJ3-B350		
400	1900	3500	JJ3-B400		
400†	—	—	JJ3-S400	343.	

\* Price includes line- and load-end pressure wire connectors. Wire range is single cable 250-500 MCM (Cu), 350-500 MCM (Al) for 250- to 350A breakers. (Cat. No. TA1-J500) and double cable connectors #3/0 AWG-250 MCM (Cu), # 4/0 AWG-250 MCM (Al) for 400A breakers (Cat. No. TA2-J250). Refer to Section 2.6.5, Page 3 for other connectors available. Deduct \$3.00 from list price for each connector not required, and specify same with order.

† Non-automatic circuit interrupter.

Ⓞ Available (not listed with U/L) calibrated for ambient temperature of 50°C. No change in price.

**MODIFICATIONS & ACCESSORIES‡**

(To order, specify by description and/or catalog number)

DESCRIPTION	LIST PRICE EACH
<input type="checkbox"/> Auxiliary switch - (specify "A" and/or "B" contact)	\$34.50
<input type="checkbox"/> Shunt trip	86.00
<input type="checkbox"/> Undervoltage trip	86.00
<input type="checkbox"/> Alarm switch	34.50
<input type="checkbox"/> Center studs	76.00
<input type="checkbox"/> Fungus proofing	15.50
Handle blocking device (Cat. no. JLL-1)	3.50
<input type="checkbox"/> Mechanical interlock - walking beam type For mounting on 1/8" steel panel or for use with plug-in mounting (Cat. no. MI-5402)	80.00
Plug-in mounting assembly 2P line or load side (Cat. no. PC-5775) 3P line or load side (Cat. no. PC-5776)	45.50 69.00
Steel switchboard mounting plate - for plug-in mounting assembly 2- or 3-pole (Cat. no. PL-5795)	**
<input type="checkbox"/> Automatic trip interlock (used with plug-in mounting assembly) 3-pole	114.00
Rear-connecting studs (two required per pole) ¾ inch extension (Cat. no. RS-5770) 5½ inch extension (Cat. no. RS-5771) 8 inch extension (Cat. no. RS-5772)	15.50 16.50 20.00
Telemand® remote-control operator 120V, ac, dc without automatic reset (Cat. No. TO1-J120) with automatic reset ■ (Cat. No. TO2-J120) 240V, ac, dc without automatic reset (Cat. No. TO1-J240) with automatic reset ■ (Cat. No. TO2-J240)	500.00
Horizontal handle - standard depth mechanism Right-hand operation - cover hinged on right (Cat. no. OH-5930) Left-hand operation - cover hinged on left (Cat. no. OH-5931)	19.00
Horizontal handle - variable depth mechanism Right-hand operation - cover hinged on right (Cat. no. VH-5933) Left-hand operation - cover hinged on left (Cat. no. VH-5932)	25.50

‡ For additional information and accessories see Section 2.6.5 pgs 1-21.

Voids U/L listing.

\*\*Furnished at no charge when ordered with plug-in mounting assembly.

■ Order an auxiliary switch (L.P. \$34.50) with the circuit breaker. For enclosure information see Section 2.7.5 pages 1-2.

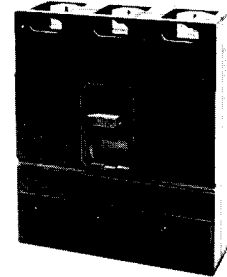




**ET® JL-FRAME CIRCUIT BREAKERS**  
**2, 3-POLE • 600 VOLTS AC • 250 VOLTS DC**  
**70-400 AMPERES INTERCHANGEABLE TRIP UNIT**  
**40C CALIBRATION ①**

**FEATURES**

- Interchangeable thermal-magnetic trip unit.
- Front-adjustable trip unit with five instantaneous trip settings.
- Connections: Pressure wire connectors; rear-connected, front-removable studs; plug-in mounting arrangements.
- Meets requirements of Federal Specification W-C-375, as a Class 4B breaker.
- Common Trip
- Quick-make, Quick-break, Trip-free Mechanism.
- Listed Underwriters' Laboratories, Inc.



42706

**INTERRUPTING RATINGS**  
 (Based on NEMA Test Procedures)

Voltage		Amperes	
		Asymmetrical	Symmetrical
A C	240	50,000	42,000
	480	35,000	30,000
	600	25,000	22,000
D C	250	20,000	

**BREAKER FRAME ONLY**

Description	Cat. No.	List Price	Ship. Wgt., Lb.
Two Pole	JL2-F400	\$202.00	16
Three Pole	JL3-F400	246.00	18

**PRICING**

Rating Amperes	Instantaneous Trip Range		Complete Breaker			Trip Unit Only		
	Low	High	Cat. No.	List Price*	Ship. Wgt., Lb.	Cat. No.	List Price	Ship. Wgt., Lb.
<b>TWO POLE 600 VOLTS AC • 250 VOLTS DC</b>								
70 †	750	1600	JL2-B070	\$261.	18	JL2-T070	\$ 47.	2½
90 †	750	1600	JL2-B090			JL2-T090		
100 †	750	1600	JL2-B100			JL2-T100		
125	750	1600	JL2-B125	416.	18	JL2-T125	202.	2½
150	750	1600	JL2-B150			JL2-T150		
175	750	1600	JL2-B175			JL2-T175		
200	960	2000	JL2-B200			JL2-T200		
225	960	2000	JL2-B225			JL2-T225		
250	1050	2250	JL2-B250	503.	30½	JL2-T250	239.	3¾
300	1050	2250	JL2-B300			JL2-T300		
350	1900	3500	JL2-B350			JL2-T350		
400	1900	3500	JL2-B400			JL2-T400		
<b>THREE POLE 600 VOLTS AC</b>								
70 †	750	1600	JL3-B070	326.	30½	JL3-T070	62.	3¾
90 †	750	1600	JL3-B090			JL3-T090		
100 †	750	1600	JL3-B100			JL3-T100		
125	750	1600	JL3-B125	503.	30½	JL3-T125	239.	3¾
150	750	1600	JL3-B150			JL3-T150		
175	750	1600	JL3-B175			JL3-T175		
200	960	2000	JL3-B200			JL3-T200		
225	960	2000	JL3-B225			JL3-T225		
250	1050	2250	JL3-B250	503.	30½	JL3-T250	239.	3¾
300	1050	2250	JL3-B300			JL3-T300		
350	1900	3500	JL3-B350			JL3-T350		
400	1900	3500	JL3-B400			JL3-T400		

\* Complete breaker price includes line- and load-end pressure wire connectors. Wire range is single cable #4 AWG-300 MCM (Cu), #2 AWG-300 MCM (Al) for 70- to 225-ampere breakers (Cat. No. TA1-J300); single cable 250-500 MCM (Cu), 350-500 MCM (Al) for 250- to 350-ampere breakers (Cat. No. TA1-J500) and double cable connector #3/0 AWG-250 MCM (Cu), #4/0 AWG-250 MCM (Al) for 400A breakers (Cat. No. TA2-J250). Refer to Section 2.6.5, Page 3 for other connectors available. Deduct \$3.00 from list price for each connector not required, and specify same with order.

① Available (not listed with U/L) calibrated for ambient temperature of 50°C. No Change in Price.

† 70-, 90- and 100-ampere breakers have interrupting ratings of 30,000 amperes asymmetrical, 25,000 amperes symmetrical at 240 volts ac; 25,000 amperes asymmetrical, 22,000 amperes symmetrical at 480 and 600 volts ac; 10,000 amperes at 250 volts dc.

**MODIFICATIONS & ACCESSORIES‡**

(To Order, Specify by Description and/or Catalog Number)

Description	List Price Each
<input type="checkbox"/> Auxiliary switch — specify "A" and/or "B" contact	\$34.50
<input type="checkbox"/> Shunt trip	86.00
<input type="checkbox"/> Undervoltage trip	86.00
<input type="checkbox"/> Alarm switch	34.50
<input type="checkbox"/> Center studs	76.00
<input type="checkbox"/> Fungus proofing	15.50
<input type="checkbox"/> Clear-sight breaker cover	♦
Handle blocking device (Cat. No. JLL-1)	3.50
<input type="checkbox"/> Mechanical interlock - walking beam type For mounting on 1/8" steel panel or for use with plug-in mounting (Cat. No. MI-5402)	80.00
Plug-in mounting assembly 2P Line or load side (Cat. No. PC-5775) 3P Line or load side (Cat. No. PC-5776)	45.50 69.00
Steel switchboard mounting plate for plug-in mounting assembly 2 or 3-pole (Cat. No. PL-5795)	**
<input type="checkbox"/> Automatic trip interlock (used with plug-in mounting assembly) 3-Pole	114.00
Rear-connecting studs (two required per pole) ¾ inch extension (Cat. No. RS-5770) ½ inch extension (Cat. No. RS-5771) 8 inch extension (Cat. No. RS-5772)	15.50 16.50 20.00
Telemand® remote-control operator 120V ac, dc without automatic reset (Cat. No. TO1-J120) with automatic reset ■ (Cat. No. TO2-J120) 240V ac, dc without automatic reset (Cat. No. TO1-J240) with automatic reset ■ (Cat. No. TO2-J240)	500.00
Horizontal handle — standard depth mechanism Right-hand operation — cover hinged on right (Cat. No. OH-5930) Left-hand operation — cover hinged on left (Cat. No. OH-5931)	19.00
Horizontal handle — variable depth mechanism Right-hand operation — cover hinged on right (Cat. No. VH-5933) Left-hand operation — cover hinged on left (Cat. No. VH-5932)	25.50

‡ For additional information and accessories see Section 2.6.5 pgs 1-2  
 ♦ Voids U/L listing.

♦ Furnished at no charge when ordered with the breaker.

\*\*Furnished at no charge when ordered with plug-in mounting assembly.

■ Order an auxiliary switch (L.P. \$34.50) with the circuit breaker. For enclosure information see Section 2.7.5 pages 1-2.

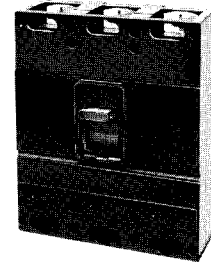




**ET® JL-FRAME CIRCUIT BREAKERS**  
**2, 3-POLE • 600 VOLTS AC • 250 VOLTS DC**  
**450-600 AMPERES INTERCHANGEABLE TRIP UNIT**  
**40C CALIBRATION**

**FEATURES**

- Interchangeable thermal-magnetic trip unit.
- Front-adjustable trip unit with five instantaneous trip settings.
- Connections: Pressure wire connectors; rear-connected, front-removable studs; plug-in mounting arrangements.
- Meets requirements of Federal Specification W-C-375, as a Class 5A breaker.
- Common Trip
- Quick-make, Quick-break, Trip-free Mechanism.



**INTERRUPTING RATINGS**  
 (Based on NEMA Test Procedures)

Voltage		Amperes	
		Asymmetrical	Symmetrical
A C	240	50,000	42,000
	480	35,000	30,000
	600	25,000	22,000
D C	250	20,000	

**BREAKER FRAME ONLY**

Description	Cat. No.	List Price	Ship. Wgt., Lb.
Two Pole	JL2-F600	\$408.00	13
Three Pole	JL3-F600	500.00	15½

**PRICING**

Rating Amperes	Instantaneous Trip Range		Complete Breaker			Trip Unit Only		
	Low	High	Cat. No.	List Price*	Ship. Wgt., Lb.	Cat. No.	List Price	Ship. Wgt., Lb.
<b>TWO POLE 600 VOLTS AC • 250 VOLTS DC</b>								
450	1900	3500	JL2-B450	\$629.	17	JL2-T450	\$189.	2½
500	1900	3500	JL2-B500	629.	17	JL2-T500	189.	
600	1900	3500	JL2-B600	629.	17	JL2-T600	189.	
600†	—	—	JL2-S600	450.	17	—	—	
<b>THREE POLE 600 VOLTS AC</b>								
450	1900	3500	JL3-B450	\$795.	21	JL3-T450	\$247.	3½
500	1900	3500	JL3-B500	795.	21	JL3-T500	247.	
600	1900	3500	JL3-B600	795.	21	JL3-T600	247.	
600†	—	—	JL3-S600	580.	21	—	—	

Complete price includes line and load end pressure wire connectors. Wire range is double cable No. 3/0-350MCM (CU), 250-500MCM (AL), (Cat. No. TA2-J500). Deduct \$8.00 from list price for each connector not required, and specify same with order.

© Available (not listed with U/L) calibrated for ambient temperature of 50°C. No Change in Price.

† Non-Automatic Circuit Interrupters.

Trip Units not interchangeable with 400 ampere JL breaker.

**MODIFICATIONS & ACCESSORIES‡**

(To Order, Specify by Description and/or Catalog Number)

Description	List Price Each
<input type="checkbox"/> Auxiliary switch — specify "A" and/or "B" contact	\$34.50
<input type="checkbox"/> Shunt trip	86.00
<input type="checkbox"/> Undervoltage trip	86.00
<input type="checkbox"/> Alarm switch	34.50
<input type="checkbox"/> Center studs	76.00
<input type="checkbox"/> Fungus proofing	15.50
<input type="checkbox"/> Clear-sight breaker cover	♦
Handle blocking device (Cat. No. JLL-1)	3.50
<input type="checkbox"/> Mechanical interlock - walking beam type For mounting on 1/8" steel panel or for use with plug-in mounting (Cat. No. MI-5402)	80.00
Plug-in mounting assembly 2P Line or load side (Cat. No. PC-5677) 3P Line or load side (Cat. No. PC-5678)	91.00 129.00
Steel switchboard mounting plate for plug-in mounting assembly 2 or 3-pole (Cat. No. PL-5679)	**
<input type="checkbox"/> Automatic trip interlock (used with plug-in mounting assembly) 3-Pole	114.00
Rear-connecting studs (two required per pole) 5½ inch extension (Cat. No. RS-5675) 8 inch extension (Cat. No. RS-5676)	31.00 33.50
Telemand® remote-control operator 120V ac, dc without automatic reset (Cat. No. TO1-J120) with automatic reset ■ (Cat. No. TO2-J120) 240V ac, dc without automatic reset (Cat. No. TO1-J240) with automatic reset ■ (Cat. No. TO2-J240)	500.00
Horizontal handle — standard depth mechanism Right-hand operation — cover hinged on right (Cat. No. OH-5930) Left-hand operation — cover hinged on left (Cat. No. OH-5931)	19.00
Horizontal handle — variable depth mechanism Right-hand operation — cover hinged on right (Cat. No. VH-5933) Left-hand operation — cover hinged on left (Cat. No. VH-5932)	25.50

‡ For additional information and accessories see Section 2.6.5 pgs 1-2  
 ♦ Voids U/L listing.

♦ Furnished at no charge when ordered with the breaker.

\*\*Furnished at no charge when ordered with plug-in mounting assembly.

■ Order an auxiliary switch (L.P. \$34.50) with the circuit breaker. For enclosure information see Section 2.7.5 pages 1-2.

42706

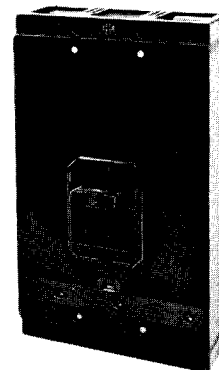




**ET® KM-FRAME CIRCUIT BREAKERS**  
**2, 3-POLE • 600 VOLTS AC • 250 VOLTS DC**  
**250-800 AMPERES INTERCHANGEABLE TRIP UNIT**  
**40C CALIBRATION<sup>Ⓞ</sup>**

**FEATURES**

- Interchangeable thermal-magnetic trip unit.
- Front-adjustable trip unit with five instantaneous trip settings.
- Connections: Pressure wire connectors; rear-connected, front-removable studs; plug-in mounting arrangements.
- Meets requirements of Federal Specification W-C-375 as a Class 5A breaker.
- Common Trip.
- Quick-make, Quick-break, Trip-free Mechanism.
- Listed by Underwriters' Laboratories, Inc.



42708

**INTERRUPTING RATINGS**  
 (Based on NEMA Test Procedures)

	Voltage	Amperes	
		Asymmetrical	Symmetrical
A C	240	50,000	42,000
	480	35,000	30,000
	600	25,000	22,000
D C	250	20,000	

**BREAKER FRAME ONLY**

Description	Cat. No.	List Price	Ship. Wgt., Lb.
Two Pole	KM2-F800	\$408.00	24
Three Pole	KM3-F800	500.00	29

**PRICING**

Rating Amperes	Instantaneous Trip Range		Complete Breaker			Trip Unit Only		
	Low	High	Cat. No.	List Price*	Ship. Wgt., Lb.	Cat. No.	List Price	Ship. Wgt., Lb.
<b>TWO POLE 600 VOLTS AC • 250 VOLTS DC</b>								
250	1050	2250	KM2-B250	\$629.	27	KM2-T250	\$189.	3
300	1050	2250	KM2-B300			KM2-T300		
350	1900	3500	KM2-B350			KM2-T350		
400	1900	3500	KM2-B400	821.	27	KM2-T400	367	3
450	1900	3500	KM2-B450			KM2-T450		
500	1900	3500	KM2-B500			KM2-T500		
600	1900	3500	KM2-B600			KM2-T600		
700	3200	5600	KM2-B700	821.	27	KM2-T700	367	3
800	3200	5600	KM2-B800			KM2-T800		
800†	—	—	KM2-S800	484.	—	—	—	—
<b>THREE POLE 600 VOLTS AC</b>								
250	1050	2250	KM3-B250	795.	33	KM3-T250	247.	4
300	1050	2250	KM3-B300			KM3-T300		
350	1900	3500	KM3-B350			KM3-T350		
400	1900	3500	KM3-B400	1053.	33	KM3-T400	484.	4
450	1900	3500	KM3-B450			KM3-T450		
500	1900	3500	KM3-B500			KM3-T500		
600	1900	3500	KM3-B600			KM3-T600		
700	3200	5600	KM3-B700	1053.	33	KM3-T700	484.	4
800	3200	5600	KM3-B800			KM3-T800		
800†	—	—	KM3-S800	610.	—	—	—	—

\*Complete breaker price includes line- and load-end pressure wire connectors. Wire range is double cable #14 AWG—500 MCM (Cu or Al) for 250- to 600-ampere breakers (Cat. No. TA2-K500); triple cable 300-350 MCM (Cu or Al) for 700- and 800-ampere breakers (Cat. No. TA3-K350). Refer to Section 2.6.5, Page 3 for other connectors available. Deduct \$8.00 from list price for each Cat. No. TA2-K500 connector not required, or \$11.50 from list price for each Cat. No. TA3-K350 connector not required, and specify same with order.

Ⓞ Available (not listed with U/L) calibrated for Ambient temperature of 50°C. No Change in price.

†Non-automatic circuit interrupter (disconnect device only).

**MODIFICATIONS & ACCESSORIES‡**  
 (To Order, Specify by Description and/or Catalog Number)

Description	List Price Each
<input type="checkbox"/> Auxiliary switch — specify "A" and/or "B" contact	\$34.50
<input type="checkbox"/> Shunt trip	86.00
<input type="checkbox"/> Undervoltage trip	86.00
<input type="checkbox"/> Alarm switch	34.50
<input type="checkbox"/> Fungus proofing	48.00
<input type="checkbox"/> Clear-sight breaker cover	†
Handle blocking device (Cat. No. KML-1)	3.50
<input type="checkbox"/> Mechanical interlock — walking beam type For mounting on 1/8" steel panel or for use with plug-in mounting (Cat. No. MI-5460)	80.00
Plug-in mounting assembly 2P Line or load side (Cat. No. PC-9606) 3P Line or load side (Cat. No. PC-9607)	91.00 129.00
Steel switchboard mounting plate — for plug-in mounting assembly 2- or 3-pole (Cat. No. PL-9698)	**
<input type="checkbox"/> Automatic trip interlock (used with plug-in mounting assembly) 3-pole only	114.00
Rear-connecting studs (two required per pole) 5½ inch extension (Cat. No. RS-9603) 8 inch extension (Cat. No. RS-9604)	31.00 33.50
Telemand® remote-control operator 120V ac, dc without automatic reset (Cat. No. TO1-K120) with automatic reset ■ (Cat. No. TO2-K120) 240V ac, dc without automatic reset (Cat. No. TO1-K240) with automatic reset ■ (Cat. No. TO2-K240)	500.00
Horizontal handle — standard depth mechanism Right-hand operation — cover hinged on right (Cat. No. OH-8650) Left-hand operation — cover hinged on left (Cat. No. OH-8651)	47.00

‡ For additional information and accessories see Section 2.6.5 pgs 1-21.  
 □ Voids U/L listing.

† Furnished at no charge when ordered with the breaker.

\*\* Furnished at no charge when ordered with plug-in mounting assembly.

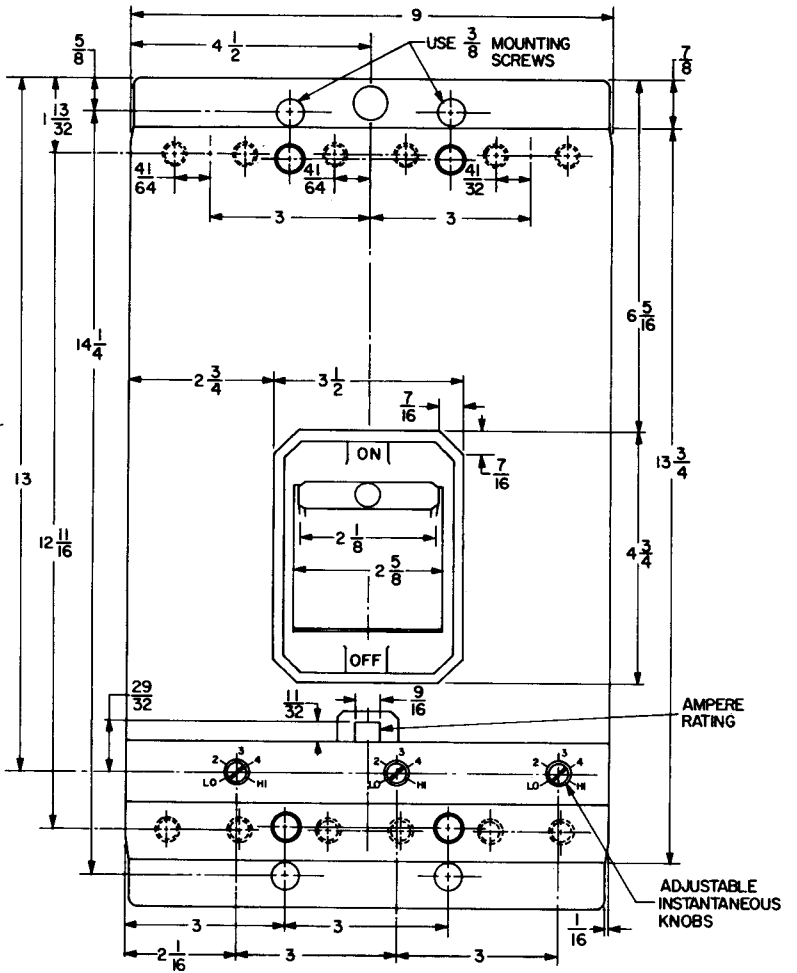
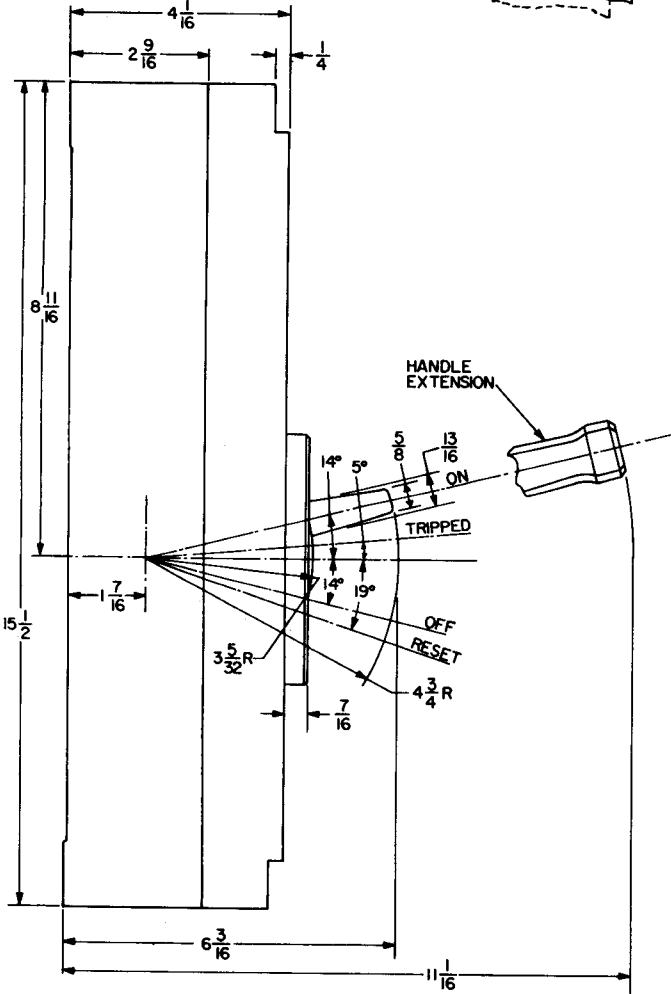
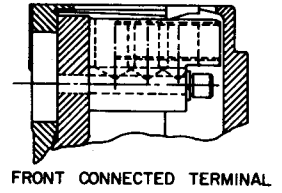
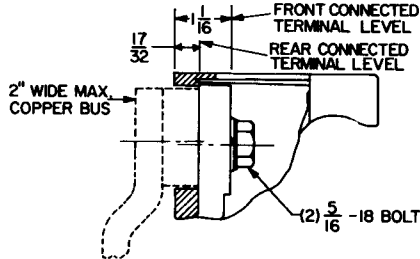
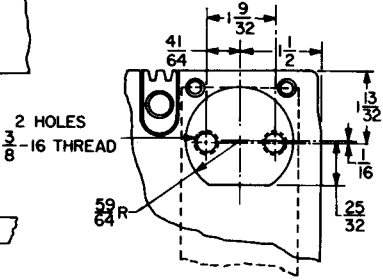
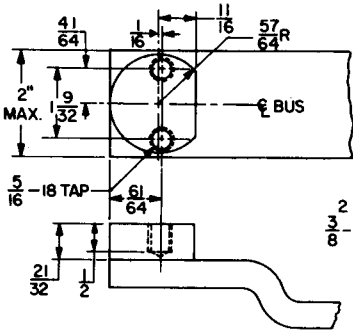
■ Order an auxiliary switch (L.P. \$34.50) with the circuit breaker.

For enclosure information see Section 2.7.5 pages 1-2.



ET® KM-FRAME CIRCUIT BREAKERS  
DIMENSIONS

TYPICAL COPPER BUS FOR  
PANELBOARD CONNECTION



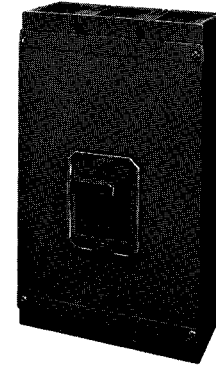


**ET® KP-FRAME CIRCUIT BREAKERS**

**3-POLES • 600 VOLTS AC • 250 VOLTS DC**  
**600-1200 AMPERES INTERCHANGEABLE TRIP UNIT**  
**40C CALIBRATION ①**

**FEATURES**

- Interchangeable thermal-magnetic trip unit.
- Front-adjustable trip unit with five instantaneous trip settings.
- Connections: Pressure wire connectors; rear-connected, front-removable studs.
- Quick-make, Quick-break, Trip-free mechanism.
- Listed by Underwriters' Laboratories, Inc.



**INTERRUPTING RATINGS**

(Based on Nema Test Procedures)

Voltage		Amperes	
		Asymmetrical	Symmetrical
A-C	240	50,000	42,000
	480	35,000	30,000
	600	25,000	22,000
	D-C	250	20,000

**MODIFICATIONS & ACCESSORIES‡**

(To order, specify by description and/or catalog number)

DESCRIPTION	LIST PRICE EACH
<input type="checkbox"/> Auxiliary switch - (Specify "A" and/or "B" contact)	<b>\$34.50</b>
<input type="checkbox"/> Shunt trip	<b>86.00</b>
<input type="checkbox"/> Undervoltage trip	<b>86.00</b>
<input type="checkbox"/> Alarm switch	<b>34.50</b>
<input type="checkbox"/> Fungus proofing	<b>48.00</b>
Connect-all mounting assembly (Cat. no. MB-9300) ◆ Optional—Not required	<b>141.00</b>
Handle blocking device (Cat. no. KML-1)	<b>3.50</b>
<input type="checkbox"/> Mechanical interlock - walking beam type For mounting on 1/8" steel panel (Cat. no. MI-5460) For mounting when connect-all assembly is used (Cat. no. MI-5482)	<b>80.00</b> <b>100.00</b>
Rear-connecting studs - flat bar type (two required per pole) 5½ inch extension (Cat. no. RS-9304) 8 inch extension (Cat. no. RS-9305)	<b>36.50</b> <b>40.00</b>
Telemand® remote-control operator 120V ac, dc without automatic reset (Cat. No. TO1-P120) with automatic reset ■ (Cat. No. TO2-P120)  240V ac, dc without automatic reset (Cat. No. TO1-P240) with automatic reset ■ (Cat. No. TO2-P240)	<b>500.00</b>
Horizontal handle - standard depth mechanism Right-hand operation - cover hinged on right (Cat. no. OH-8650) Left-hand operation - cover hinged on left (Cat. no. OH-8651)	<b>47.00</b>

**PRICING**

Rating Amperes	Instantaneous Trip Range		Complete Breaker*			Trip Unit Only		
	Low	High	Cat. No.	List Price	Ship. Wgt., Lb.	Cat. No.	List Price	Ship. Wgt., Lb.
	<b>THREE-POLE◆</b>			<b>600 VOLTS AC • 250 VOLTS DC</b>				
600	3200	5600	KP3-B600	\$1310.	46	KP3-T600	\$500.	7
800	3200	5600	KP3-B800	1310.		KP3-T800	500.	
1000	4000	8000	KP3-B100	1340.		KP3-T100	540.	
1200	4000	8000	KP3-B120	1820.		KP3-T120	980.	
1200†			KP3-S120	930.		—	—	

\* Complete breaker price includes line- and load-end pressure wire connectors. Wire range is four cable 250—500 MCM (Cu or Al) (Cat. No. TA4-P500). Deduct \$31.00 from list price for each connector not required, and specify with order.  
 ① Available (not listed with U/L) calibrated for ambient temperature of 50°C. No change in price.  
 † Non-automatic circuit interrupter (disconnect device only).  
 ◆ For two-pole application, use two outside poles only.

‡ For additional information and accessories see Section 2.6.5 pgs 1-21.  
 □ Voids U/L listing.  
 ◆ Standard wire connectors cannot be used. Instead use connector catalog number TA5-P600, list price \$36.50 each. Wire range is five cable 300-600 MCM (cu or al).  
 ■ Order an auxiliary switch (L.P. \$34.50) with the circuit breaker. For enclosure information see Section 2.7.5 pages 1-2.

43206



ET® KP-FRAME CIRCUIT BREAKERS  
 DIMENSIONS

