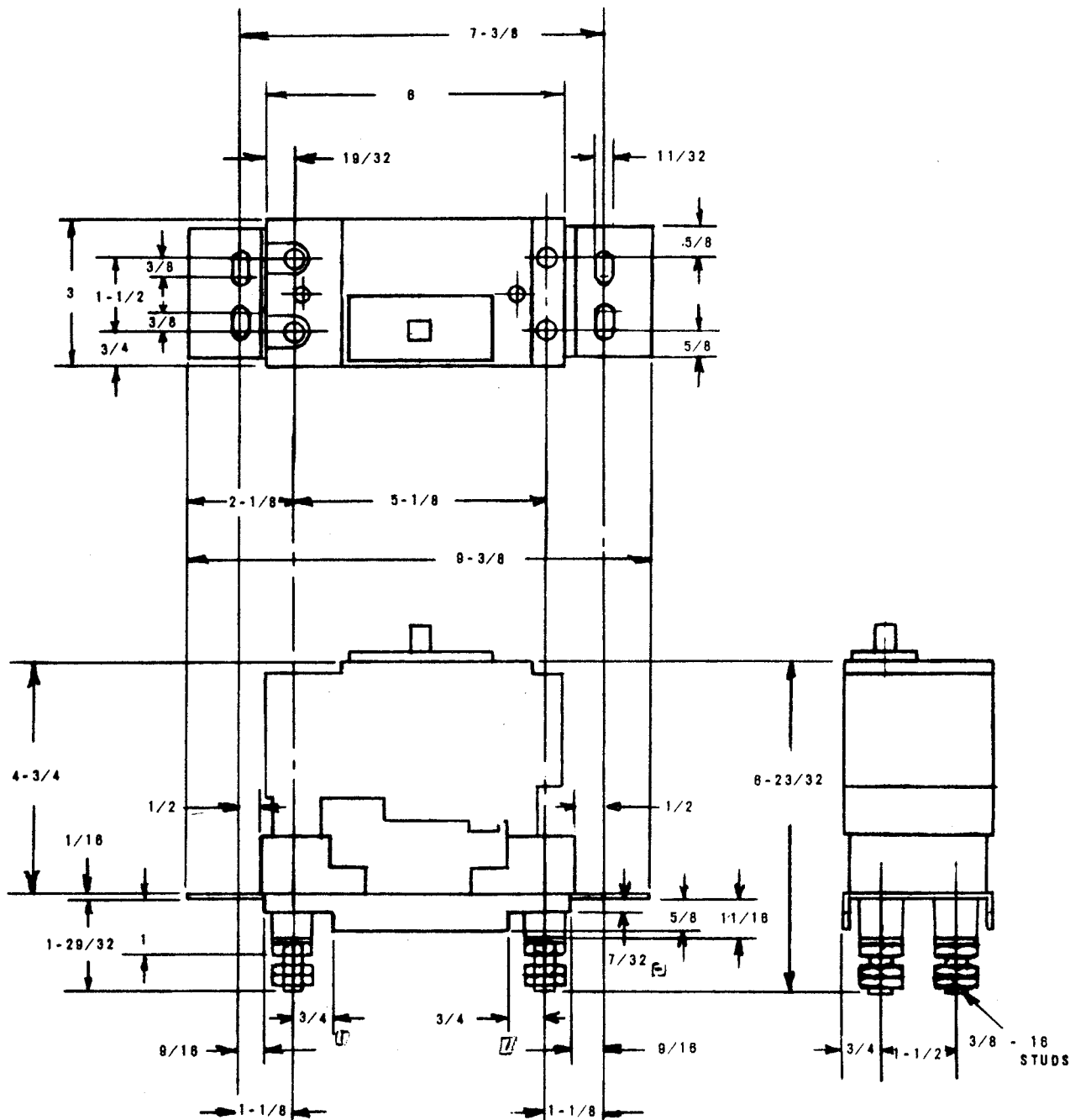




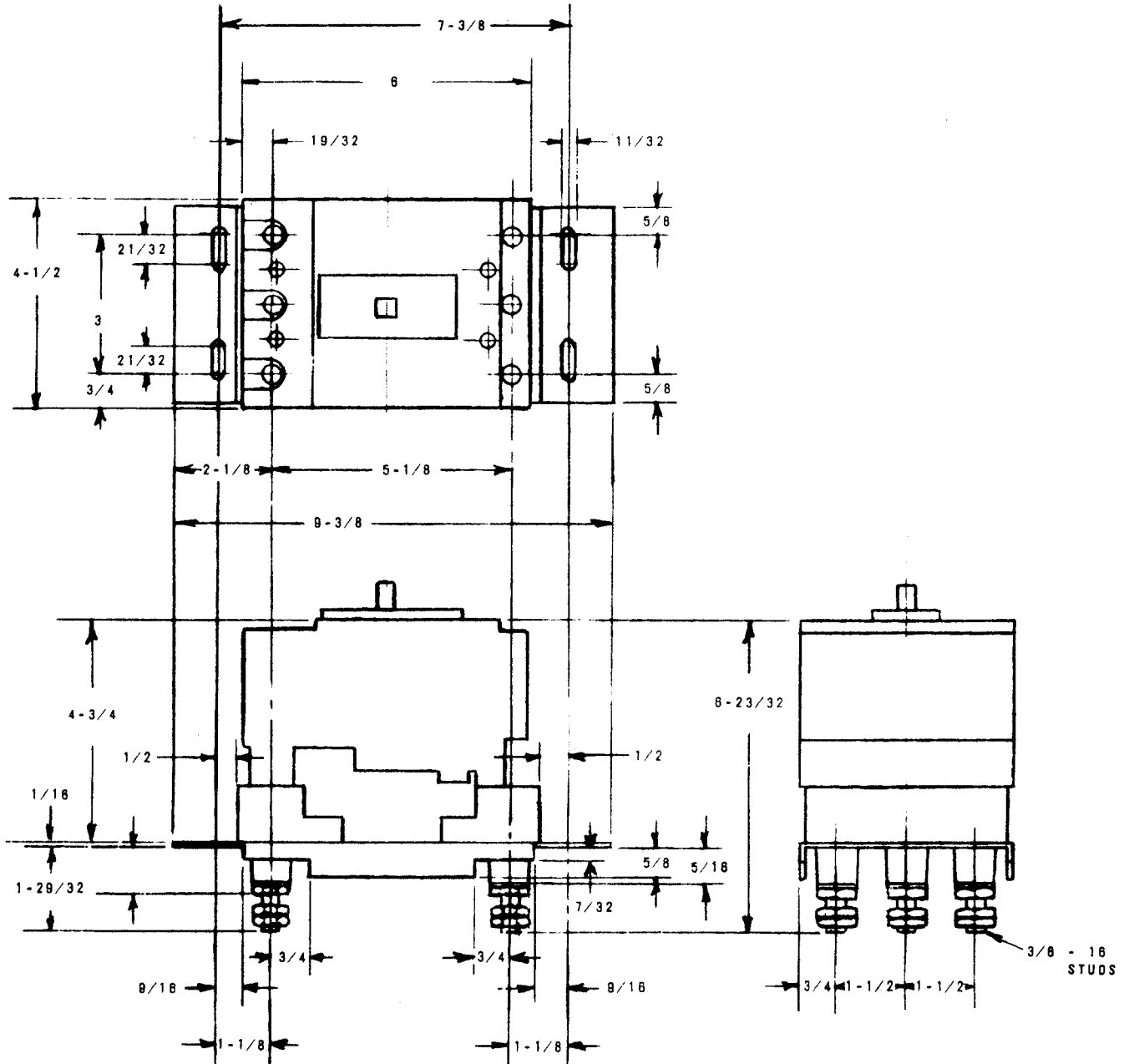
PLUG-IN MOUNTING ASSEMBLY - E FRAME
DIMENSIONS



Two Pole E-Frame with Plug-In Mounting Arrangement and Switchboard Mounting Plate



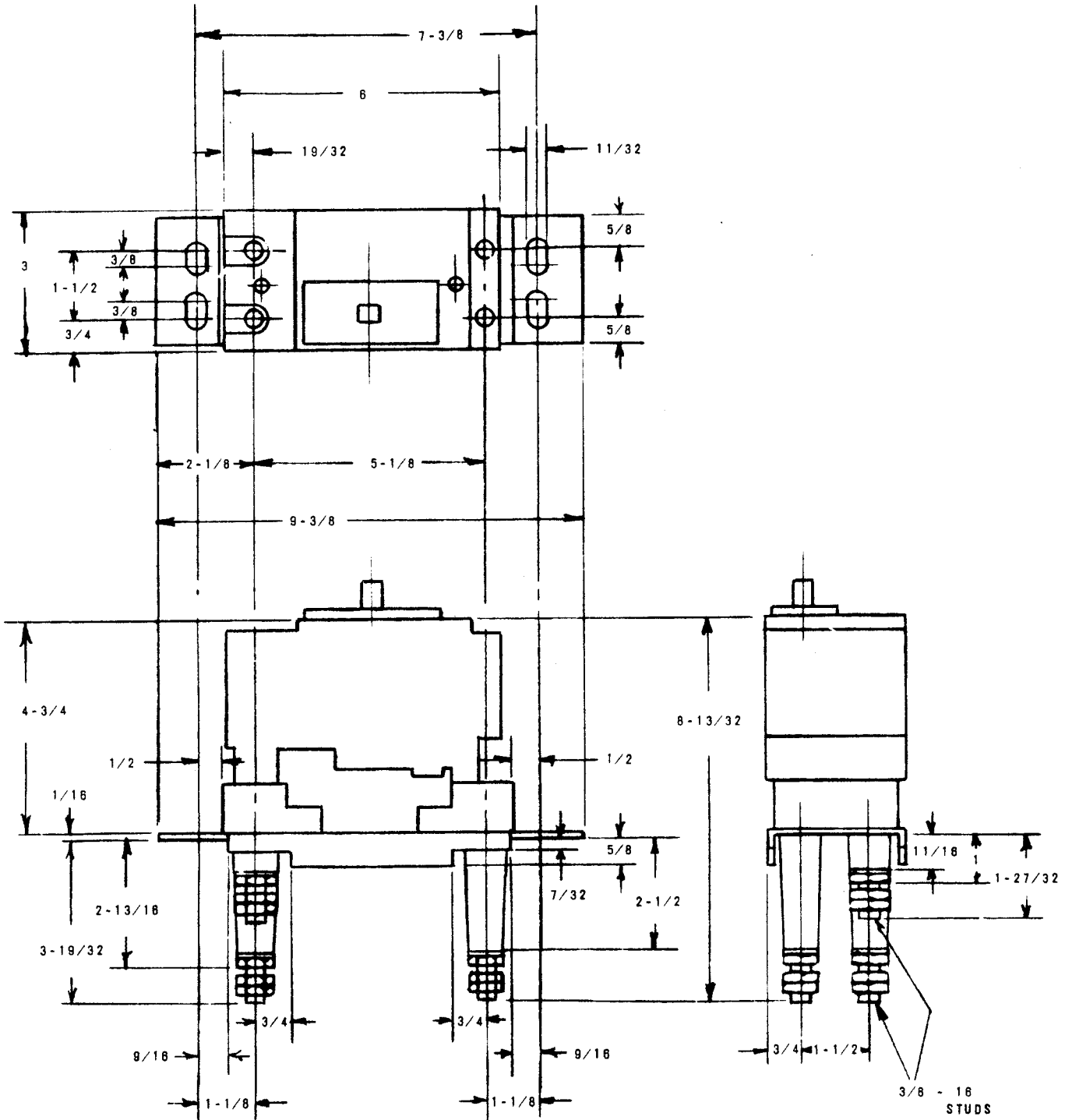
PLUG-IN MOUNTING ASSEMBLY - E FRAME
DIMENSIONS



Three-Pole E-Frame with Plug-In Mounting Arrangement and Switchboard Mounting Plate



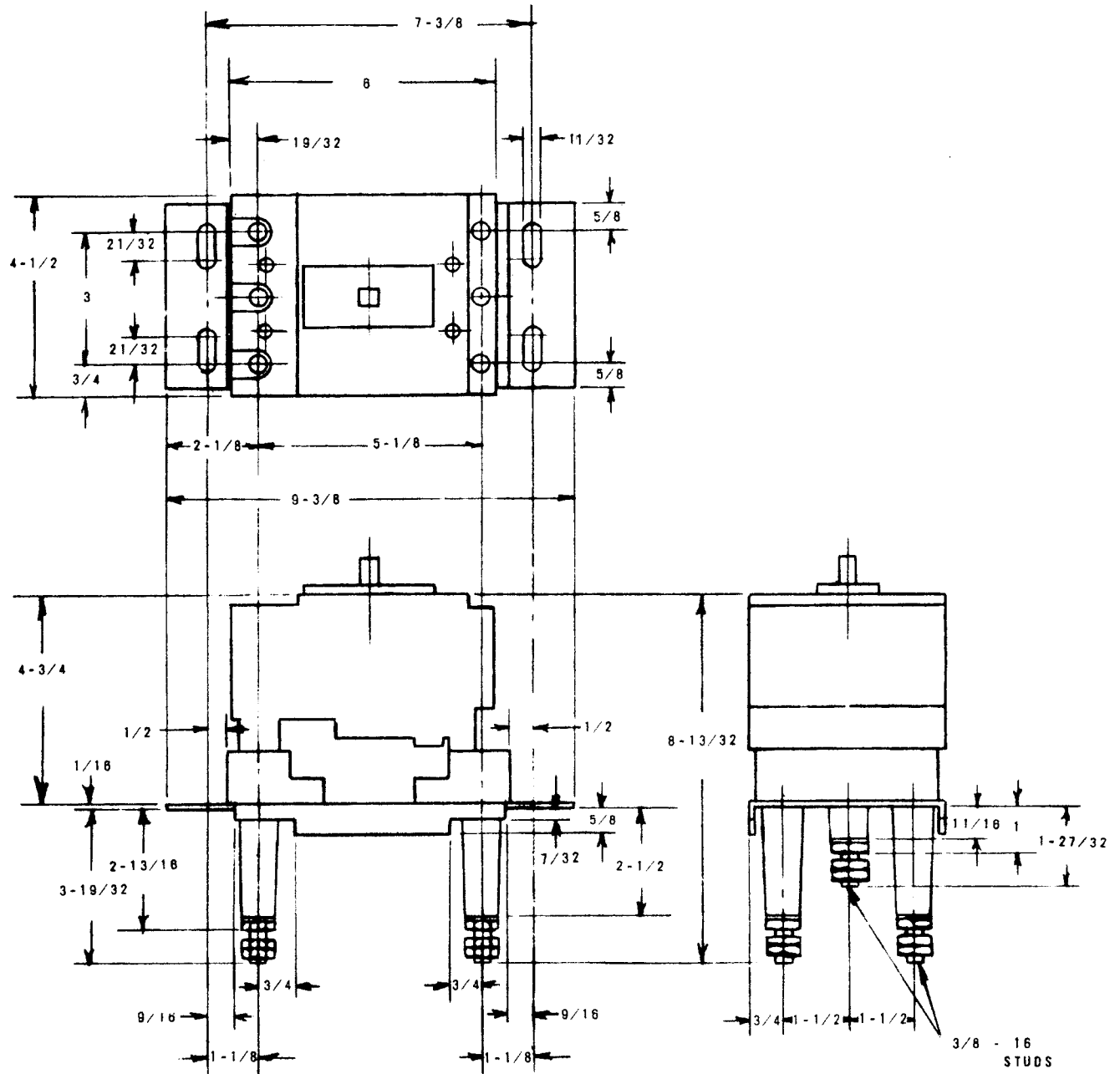
PLUG-IN MOUNTING ASSEMBLY - EH AND EF FRAME
DIMENSIONS



Two-Pole EH and EF Frame with Plug-in Mounting Arrangement and Switchboard Mounting Plate



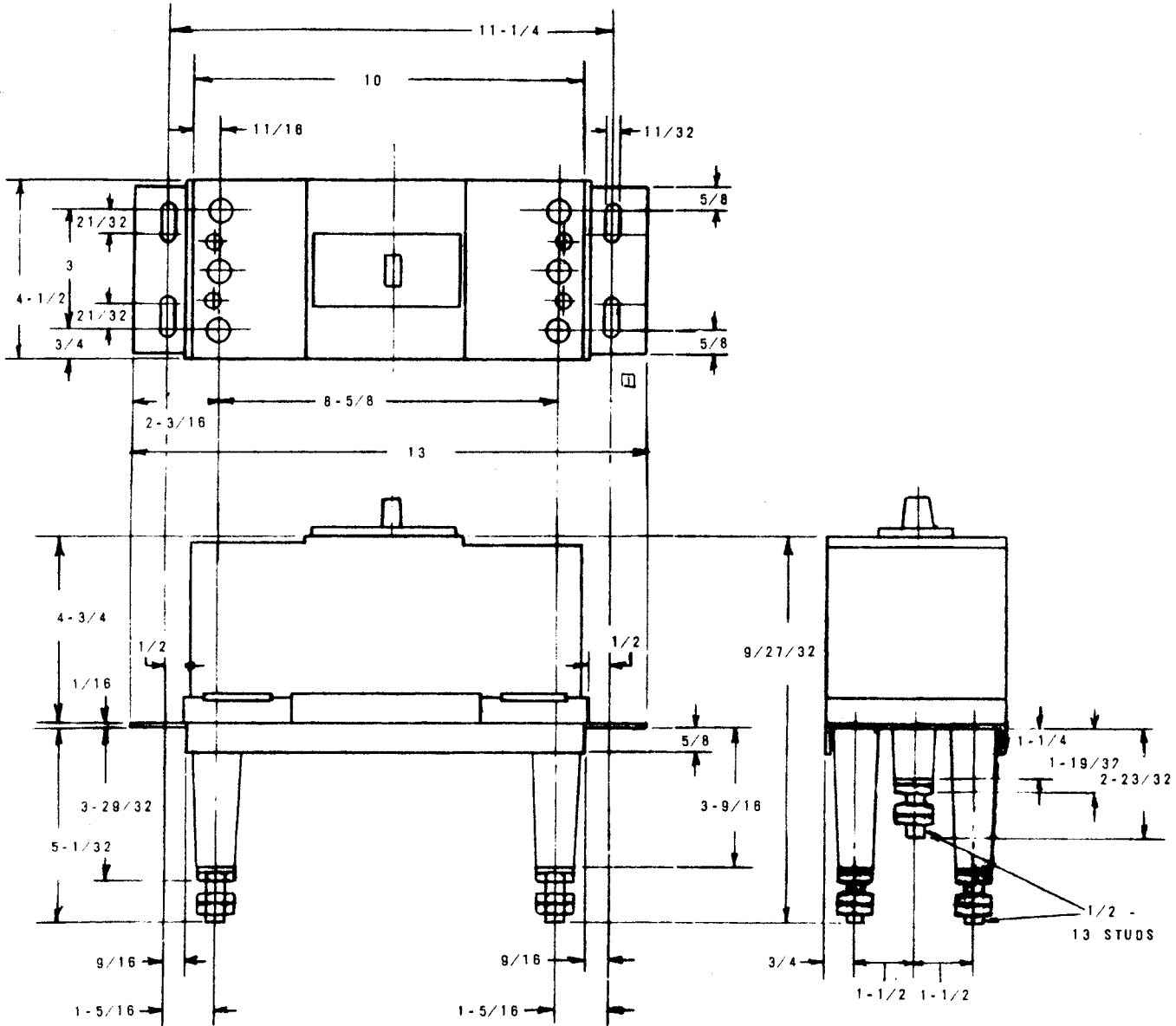
PLUG-IN MOUNTING ASSEMBLY - EH, EF AND HE FRAME
DIMENSIONS



Three-Pole EH, EF and HE Frame with Plug-In Mounting Arrangement and Switchboard Mounting Plate



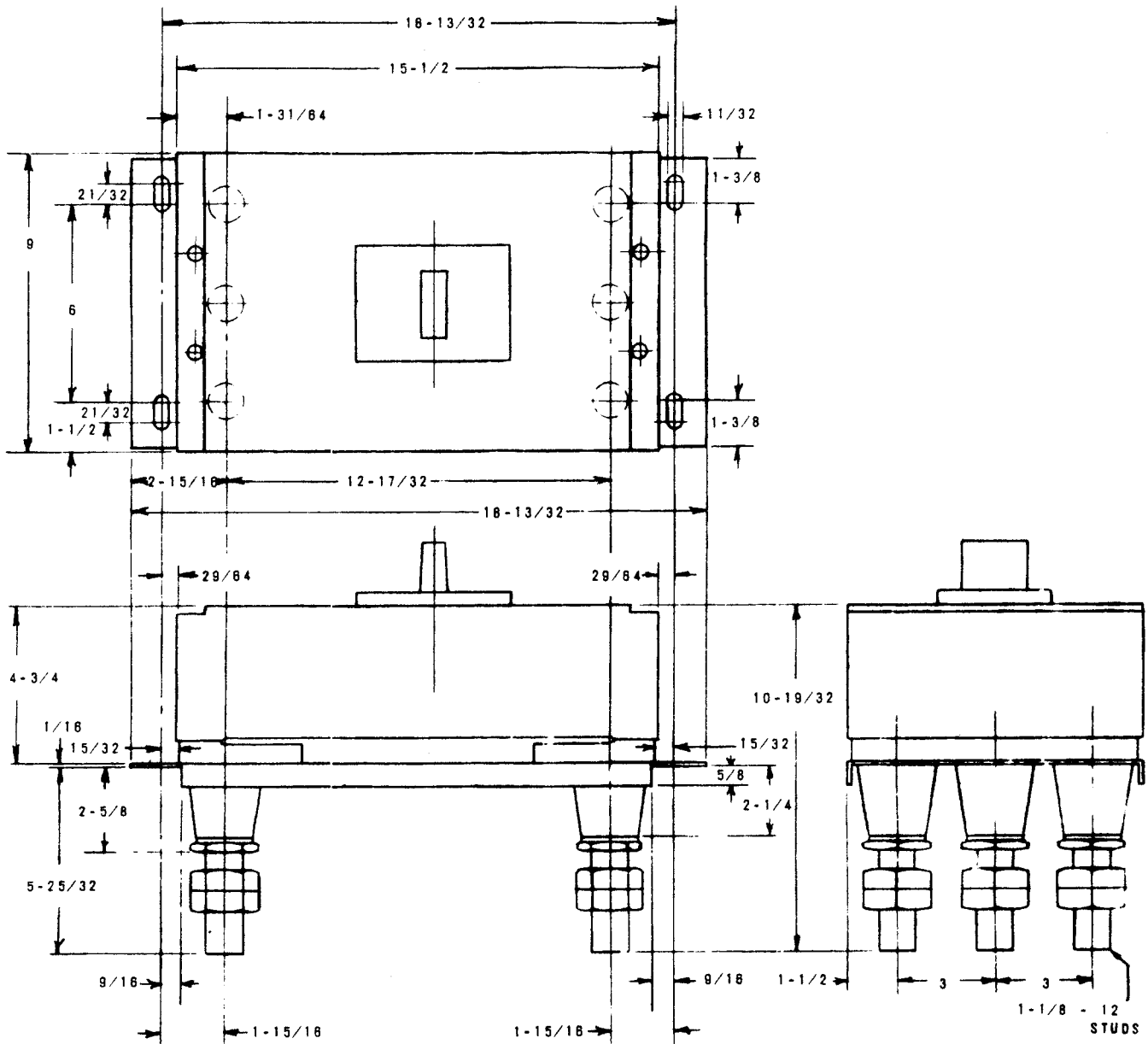
PLUG-IN MOUNTING ASSEMBLY - FJ, JJ AND JL FRAME
DIMENSIONS



Three-Pole FJ Frame with Plug-in Mounting Arrangement and Switchboard Mounting Plate
(Center-Pole Omitted for Two-Pole Breaker)



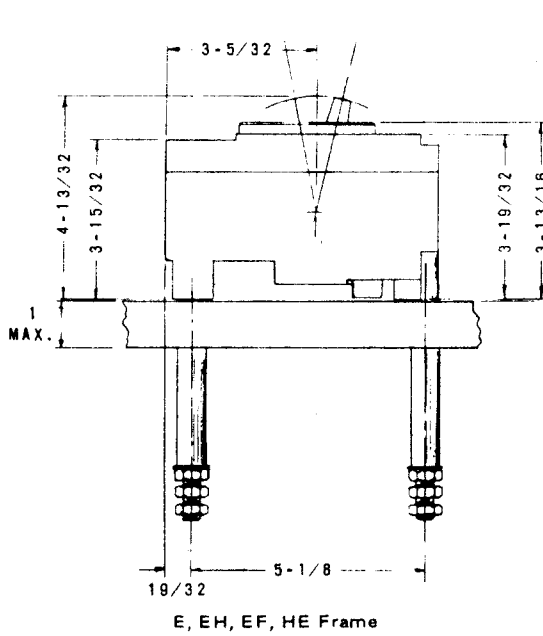
PLUG-IN MOUNTING ASSEMBLY - KM FRAME DIMENSIONS



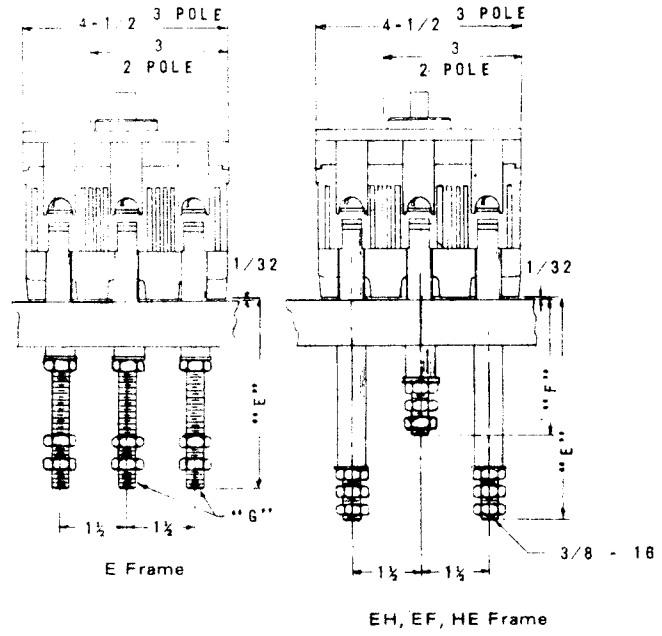
Three-Pole KM Frame with Plug-in Mounting Arrangement and Switchboard Mounting Plate.
(Center-Pole Omitted for Two-Pole Breaker)



REAR-CONNECTING STUDS
DIMENSIONS



SIDE VIEW



END VIEWS

E FRAME

CAT. NO.	AMPERES	"E"		"G"
RS-1501	50	3	LINE	1/4-20
RS-1505	50	3	LOAD	1/4-20
RS-1502	100	3-1/4	LINE	3/8-16
RS-1506	100	3-1/4	LOAD	3/8-16

EH, EF, HE FRAMES

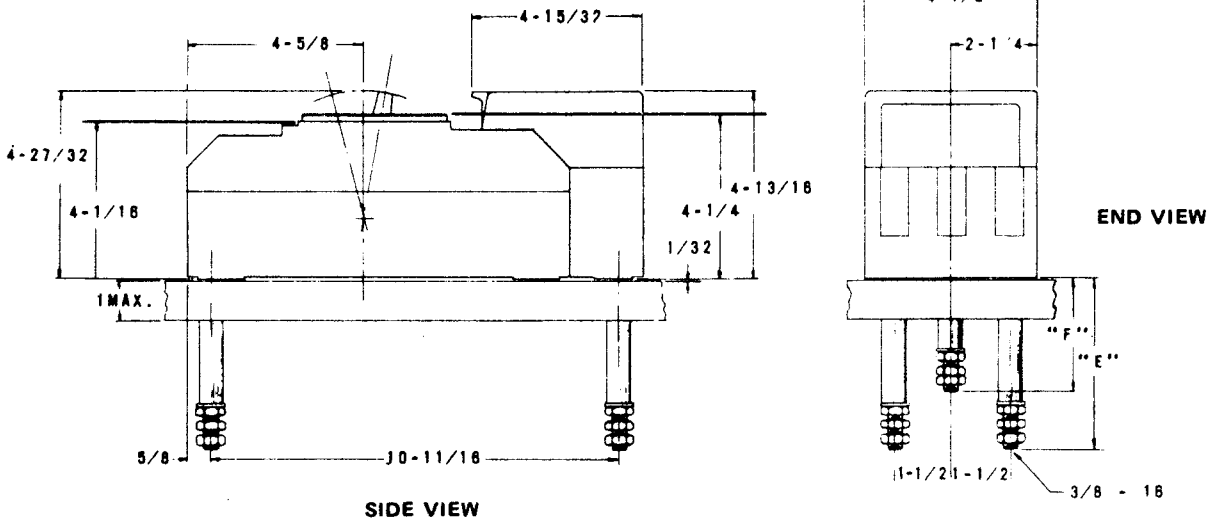
CAT. NO.	"E"	"F"	
RS-2645	4-3/4	—	LINE
RS-2646	4-3/4	—	LOAD
RS-2647	—	2-15/16	LINE
RS-2648	—	2-15/16	LOAD



MOLDED-CASE CIRCUIT BREAKERS

3. S-15653 - Rev. 0

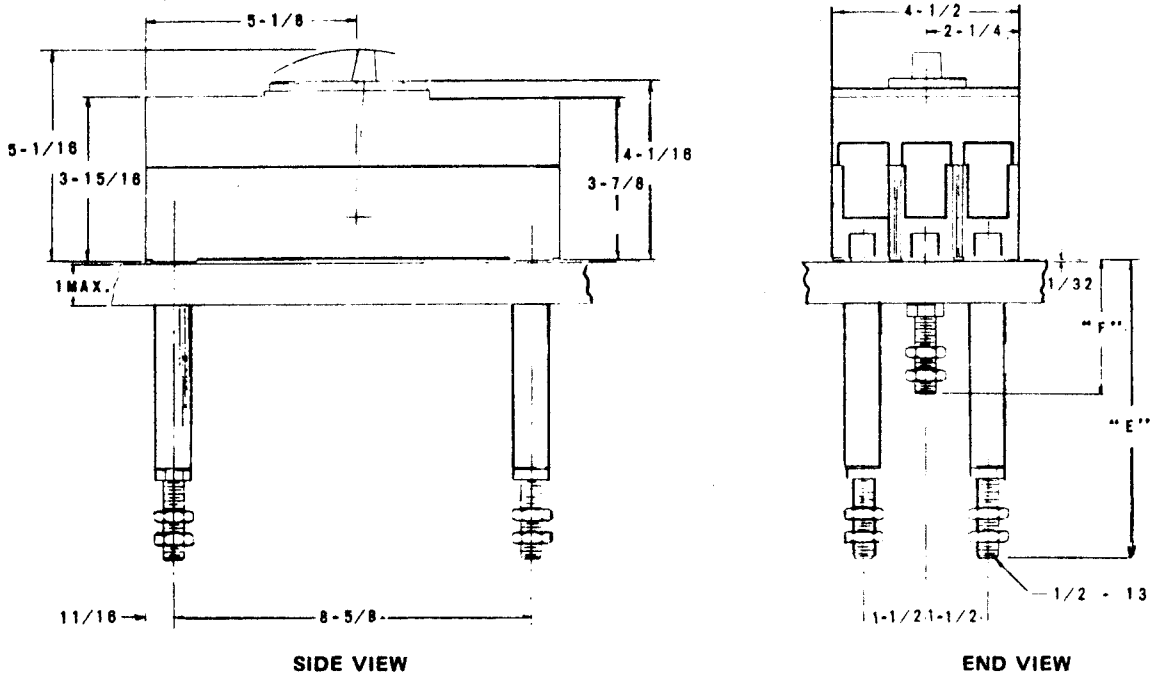
REAR-CONNECTING STUDS
DIMENSIONS



SIDE VIEW
CF FRAME

CENTER POLE OMITTED FOR TWO POLE BREAKER

CAT. NO. (LINE)	CAT. NO. (LOAD)	"E"	"F"
RS-0200	RS-4502	4-13/16	-
RS-0100	RS-4501	-	2-15/16



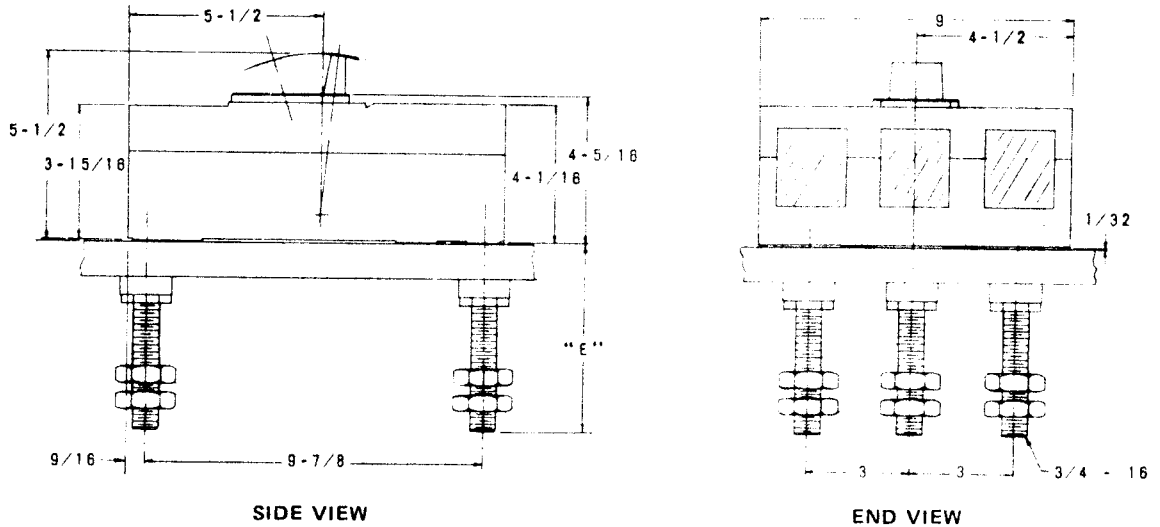
SIDE VIEW
FJ FRAME

CENTER POLE OMITTED FOR TWO POLE BREAKER

CAT. NO.	"E"	"F"
RS-4753	7-3/16	-
RS-4754	-	3-1/4



REAR-CONNECTING STUDS
DIMENSIONS

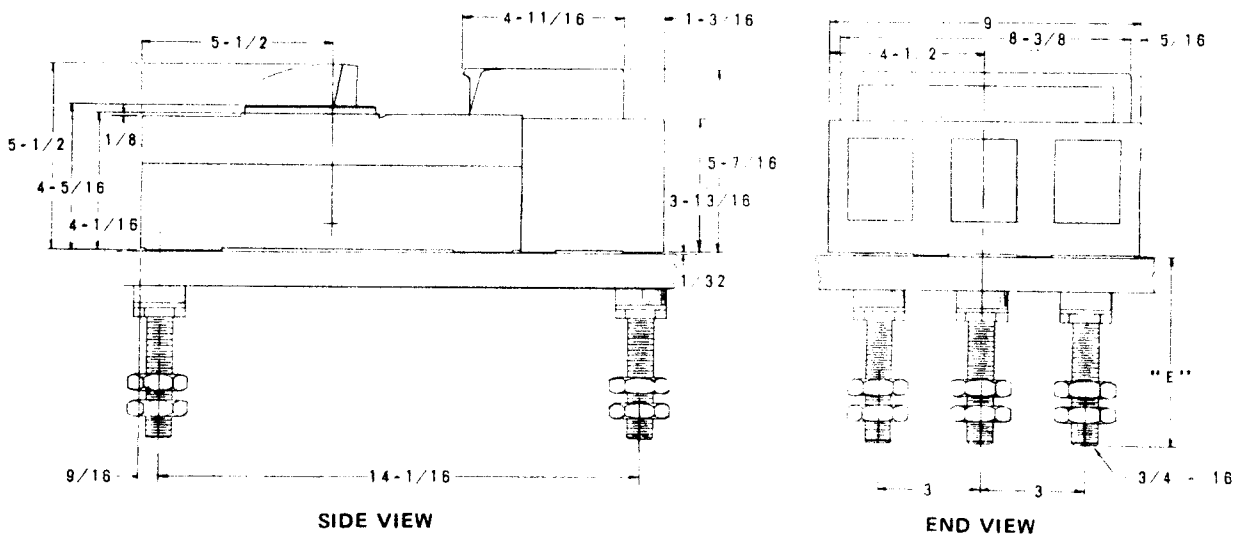


SIDE VIEW

END VIEW

JJ, JL, HJ FRAMES
CENTER POLE OMITTED FOR TWO POLE BREAKER

CAT. NO.	"E"
RS-5770	3-1/4
RS-5771	5-1/2
RS-5772	8



SIDE VIEW

END VIEW

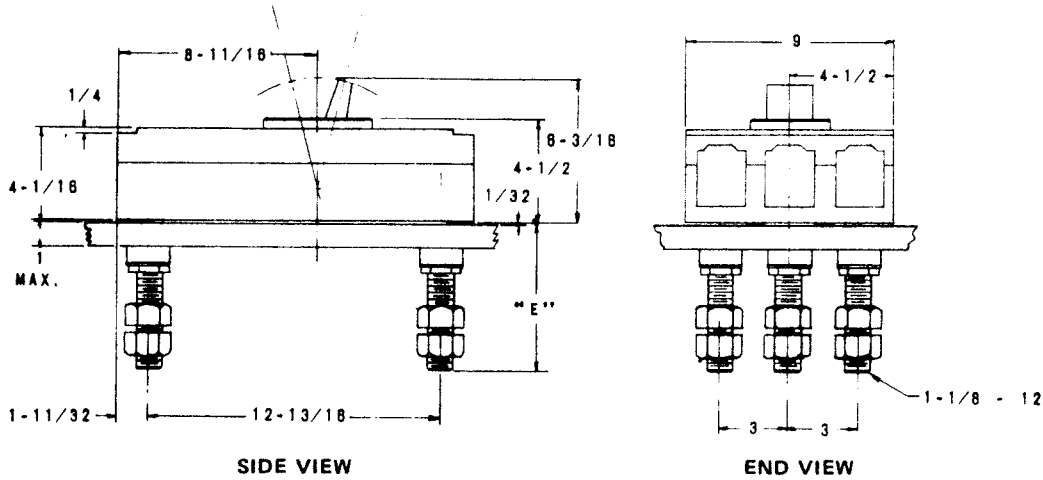
CJ FRAME
CENTER POLE OMITTED FOR TWO POLE BREAKER

CAT. NO. (LINE)	CAT. NO. (LOAD)	"E"
RS-5770	RS-5538	3-1/4
RS-5771	RS-5539	5-1/2



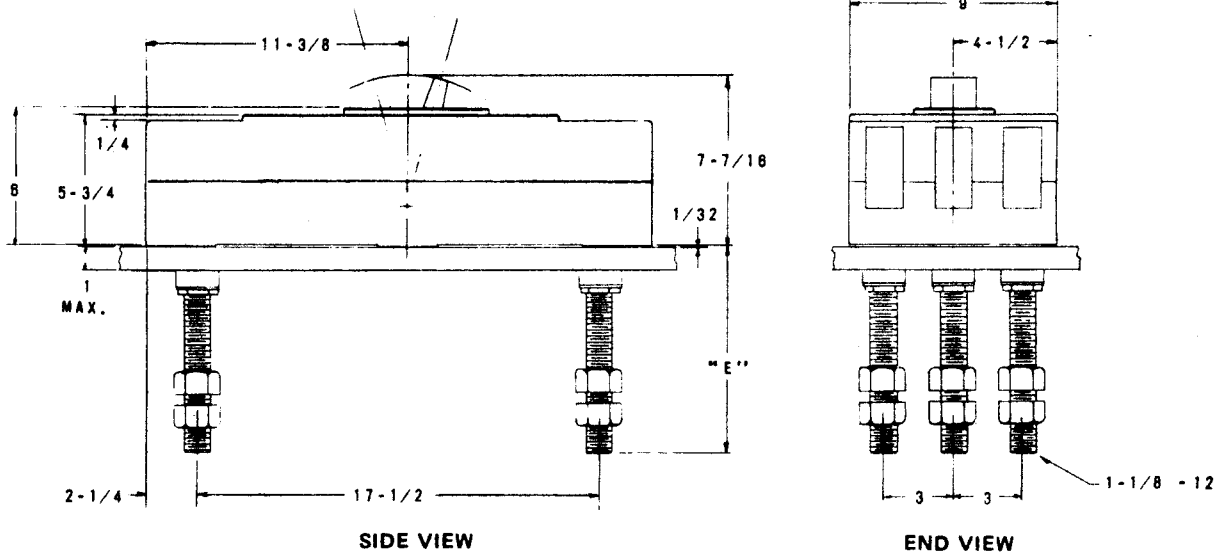
MOLDED-CASE CIRCUIT BREAKERS

REAR-CONNECTING STUDS
DIMENSIONS



KM FRAME
CENTER POLE OMITTED FOR TWO POLE BREAKER

AMPS.	"E"	CAT. NO.
125-800	5-1/2	RS-9603
125-800	8	RS-9604

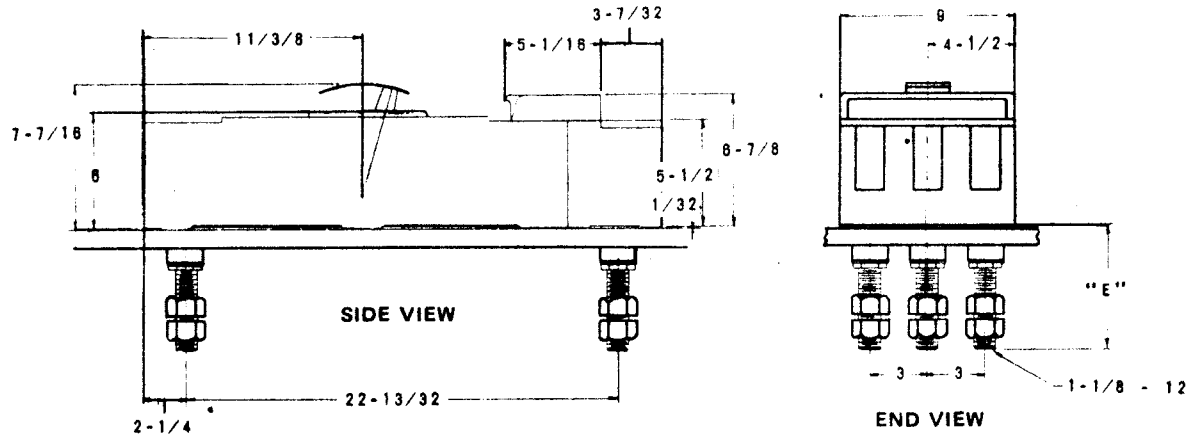


HM FRAME
CENTER POLE OMITTED FOR TWO POLE BREAKER

AMPS.	"E"	CAT. NO.
125-800	5-1/2	RS-8855
125-800	8	RS-8856
125-800	10-1/2	RS-8857

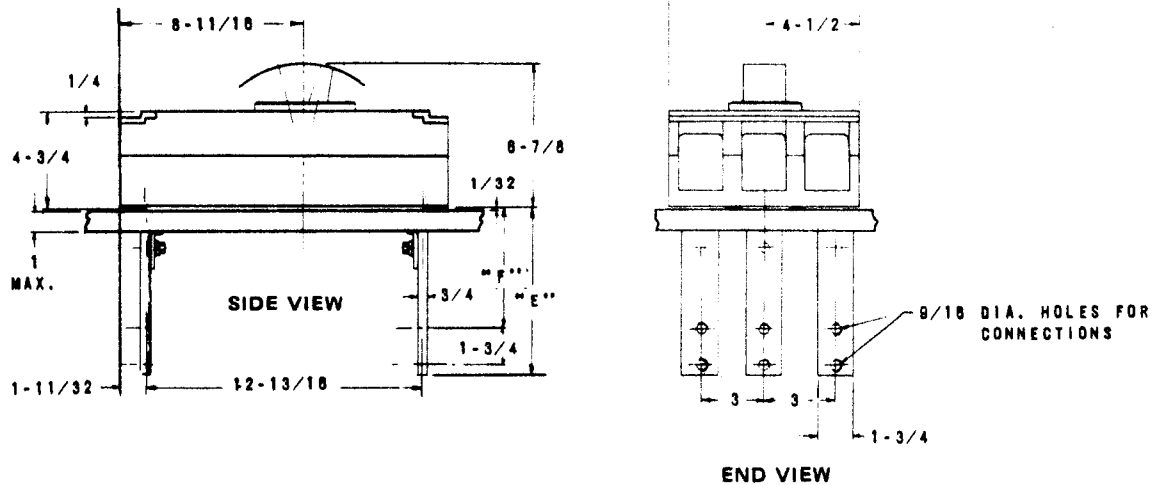


REAR-CONNECTING STUDS
DIMENSIONS



CM FRAME
CENTER POLE OMITTED FOR TWO POLE BREAKER

CAT. NO. (LINE)	CAT. NO. (LOAD)	"E"
RS-8855	RS-8990	5-1/2
RS-8856	RS-8991	8



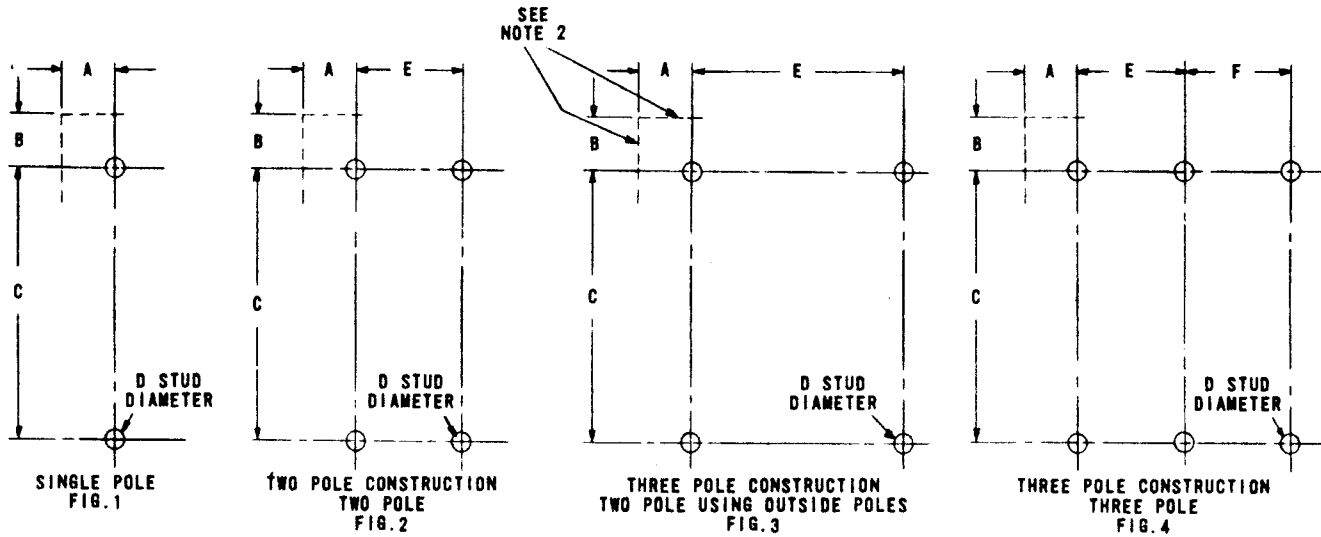
KP FRAME
CENTER POLE OMITTED FOR TWO POLE BREAKER

Switchboard Connecting Strap		
CAT. NO.	"E"	"F"
RS-9304	5-1/2	3-1/4
RS-9305	8	5-3/4



REAR-CONNECTING STUDS
DIMENSIONS

DRILLING PLANS



For Use With Breaker Frame (s)	Poles	Figure	Rating, Amperes	Dimensions					
				A	B	C	D Dia.*	E	F
E	1	1	50	3/4	19/32	5-1/8	1/4	—	—
E	2	2	50	3/4	19/32	5-1/8	1/4	1-1/2	—
E	3	4	50	3/4	19/32	5-1/8	1/4	1-1/2	1-1/2
E	1	1	100	3/4	19/32	5-1/8	3/8	—	—
E, EH, EF, HE	2	2	100	3/4	19/32	5-1/8	3/8	1-1/2	—
E, EH, EF, HE	3	4	100	3/4	19/32	5-1/8	3/8	1-1/2	1-1/2
CF	2	3	100	3/4	5/8	10-11/16	3/8	3	—
CF	3	4	100	3/4	5/8	10-11/16	3/8	1-1/2	1-1/2
FJ	2	3	225	3/4	11/16	8-5/8	1/2	3	—
FJ	3	4	225	3/4	11/16	8-5/8	1/2	1-1/2	1-1/2
JJ, JL, HJ	2	3	400	1-1/2	9/16	9-7/8	3/4	6	—
JJ, JL, HJ	3	4	400	1-1/2	9/16	9-7/8	3/4	3	3
CJ	2	3	400	1-1/2	9/16	14-1/16	3/4	6	—
CJ	3	4	400	1-1/2	9/16	14-1/16	3/4	3	3
KM	2	3	800	1-1/2	1-11/32	12-13/16	1-1/8	6	—
KM	3	4	800	1-1/2	1-11/32	12-13/16	1-1/8	3	3
HM	2	3	800	1-1/2	2-1/4	17-1/2	1-1/8	6	—
HM	3	4	800	1-1/2	2-1/4	17-1/2	1-1/8	3	3
CM	2	3	800	1-1/2	2-1/4	22-13/32	1-1/8	6	—
CM	3	4	800	1-1/2	2-1/4	22-13/32	1-1/8	3	3

NOTES: 1. All figures show front of panel.

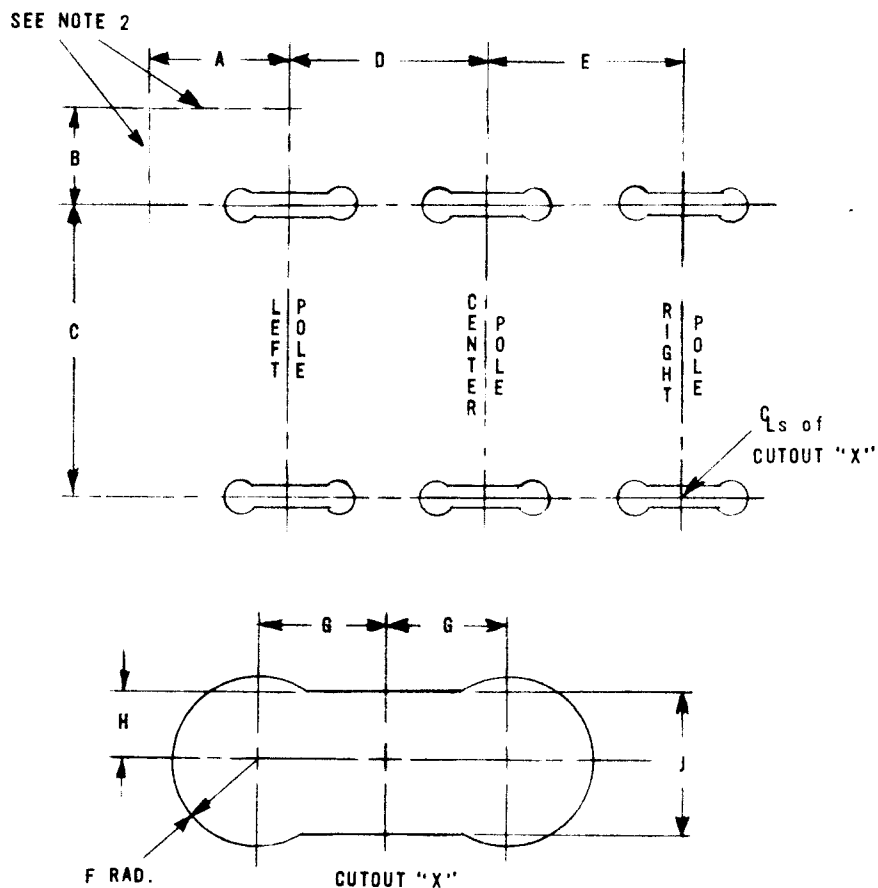
2. Dotted lines show relative positions of left side and line end of circuit breaker. (Applies to Figures 1, 2, 3 and 4)

* "D" diameter is actual stud diameter. Drilling diameters should provide clearance.



REAR-CONNECTING STUDS
DIMENSIONS

DRILLING PLANS
FOR
KP-FRAME SWITCHBOARD CONNECTING STRAP
(Flat-Bar Construction)



Rating Amperes	Dimensions								
	A	B	C	D	E	F RAD.	G	H	J
1200	1-1/2	1-11/32	12-13/16	3	3	1/2	5/8	7/16	7/8

- NOTES:
1. Three-pole drilling shown. For two-pole, omit center pole drilling.
 2. Dotted lines show relative positions of left side and line end of circuit breaker.
 3. Drilling plan shown for front of panel.
 4. Cutout "X" provides clearance for connecting straps.
 5. Straps are in horizontal plane.