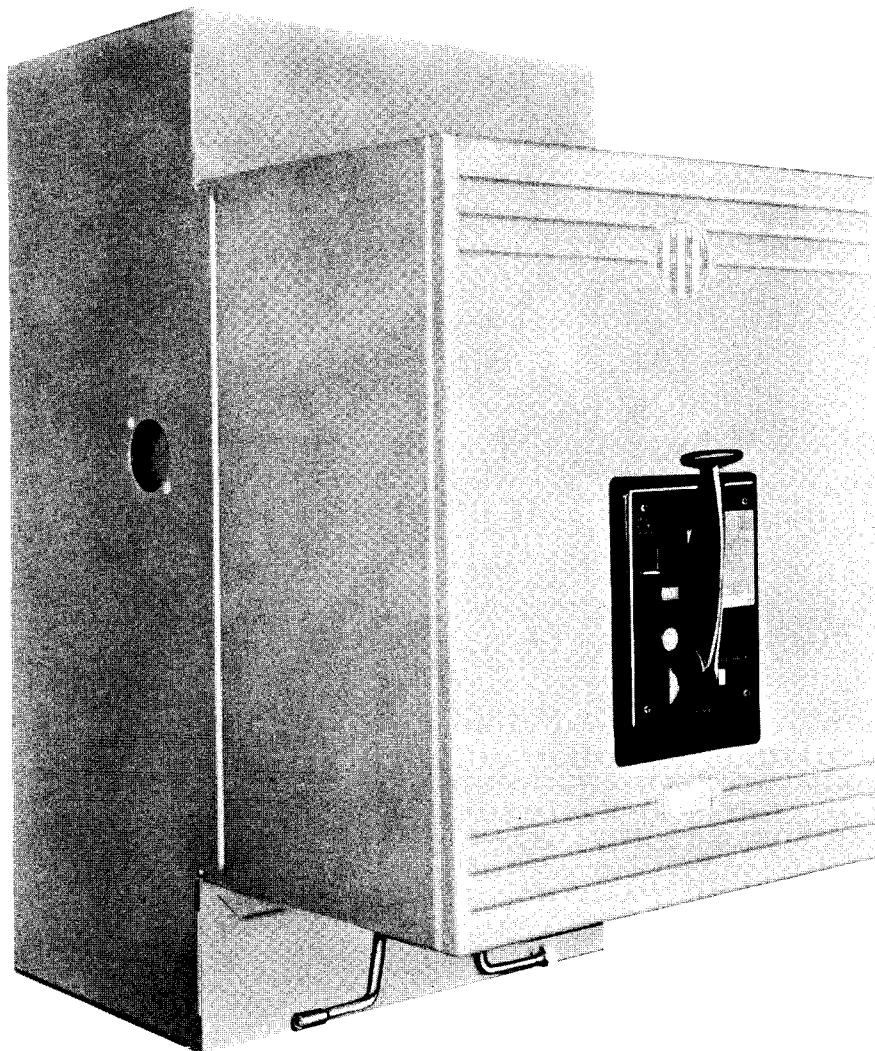


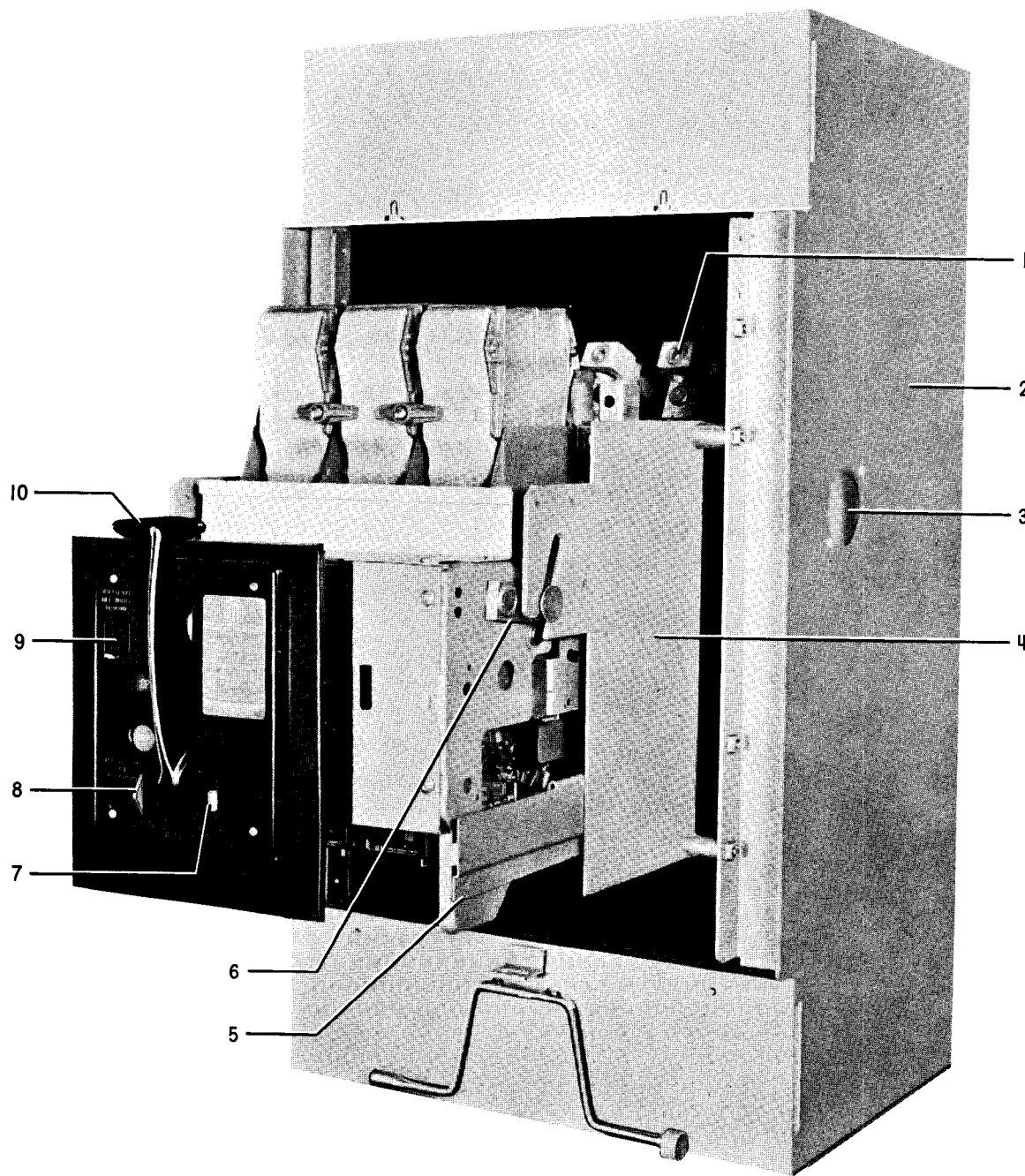
ENCLOSED LOW-VOLTAGE POWER CIRCUIT BREAKERS

INSTRUCTIONS
INSTALLATION SUPPLEMENT

CIRCUIT BREAKER INDIVIDUAL ENCLOSURES
URELITE®



I-T-E IMPERIAL CORPORATION



- | | |
|-------------------------|----------------------------|
| 1 Solderless Lug | 6 Racking Arm Assembly |
| 2 Pullbox | 7 Automatic Trip Indicator |
| 3 Window | 8 Locking Hasp |
| 4 Track and Cam Support | 9 Racking Shutter |
| 5 Track | 10 Manual Closing Handle |

Fig. 1—General Purpose URELITE with the Front Cover Removed Showing the Circuit Breaker in the Withdrawn Position



INSTALLATION SUPPLEMENT FOR CIRCUIT BREAKER INDIVIDUAL ENCLOSURES URELITE

INTRODUCTION

These supplementary instructions cover the installation of the URELITE enclosure as used with the type K-225 through K-2000 circuit breakers, K-DON[®] fused circuit breakers, and KF field-discharge circuit breakers. The general purpose URELITE is illustrated. Also available are dustproof and weatherproof models.

All instructions pertaining to installation, operation and maintenance of basic K-Line[®] circuit breakers also apply when these circuit breakers are installed in the URELITE enclosure.

Refer to the basic instruction and renewal parts bulletins as listed at the bottom of this page.

INSTALLATION

The following steps are necessary for the installation of the URELITE enclosure and circuit breaker.

1. Install the pullbox.

2. Pull the primary cables into place. Make sure all terminal connections are tight.

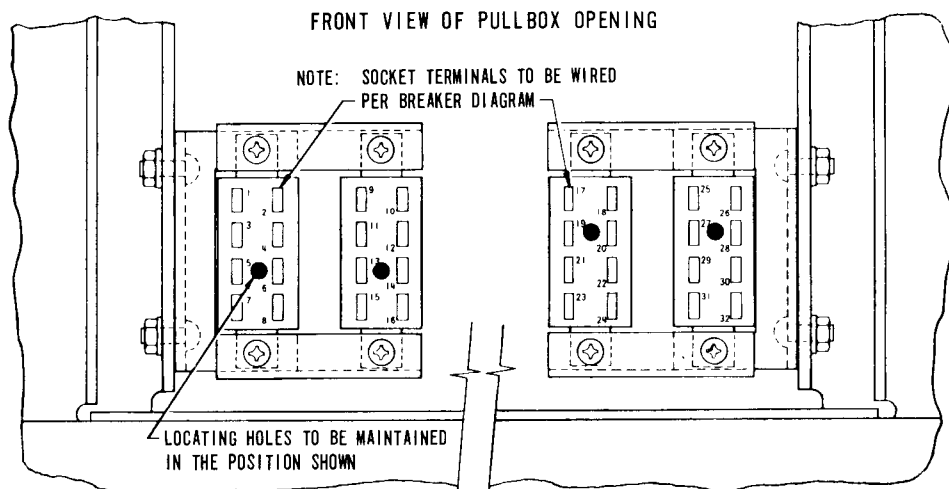
3. Pull the control wiring into place. Make the connections to the female disconnect plug as shown on the wiring diagram furnished for your particular installation. Also see Fig. 2.

FOR SAFETY: For initial installation, make sure that the primary and control circuits are deenergized before inserting the circuit breaker into the enclosure.

4. Insert the circuit breaker as described in the basic instructions; however, the URELITE enclosure does not include the pull-out type tracks, positioning pins and cut-out track sections as described in the basic instructions.

5. Connect the control wiring to the circuit breaker by inserting the control disconnect plug from the circuit breaker into the control disconnect plug mounted inside the pullbox.

These instructions do not purport to cover all details or variations in equipment nor to provide for every possible contingency to be met in connection with installation, operation, or maintenance. Should further information be desired or should particular problems arise which are not covered sufficiently for the purchaser's purposes the matter should be referred to the I-T-E Imperial Corporation.



**Fig. 2—Mounting Arrangement and Numbering Sequence of
Disconnect Sockets in a Urelite Pullbox**

BASIC INSTRUCTION AND RENEWAL PARTS BULLETINS

Type	Instructions	Repair Parts
K-225, K-600, K-1600, K-2000 (Individually Enclosed Urelite)	IB-9.1.7-6	RP-9.1.8-1



ITE IMPERIAL CORPORATION