



ET® HEAVY-DUTY PANELBOARDS

SELECTION, APPLICATION & PRICING

NHDP—600 AMPERE MAINS

480 VOLTS AC 100A MAX. BRANCH

PANELBOARDS: Listed by Underwriters' Laboratories, Inc. under File #2269. Meet Federal Specification W-P-115a dated January 7, 1963, for Type I, Class 1.

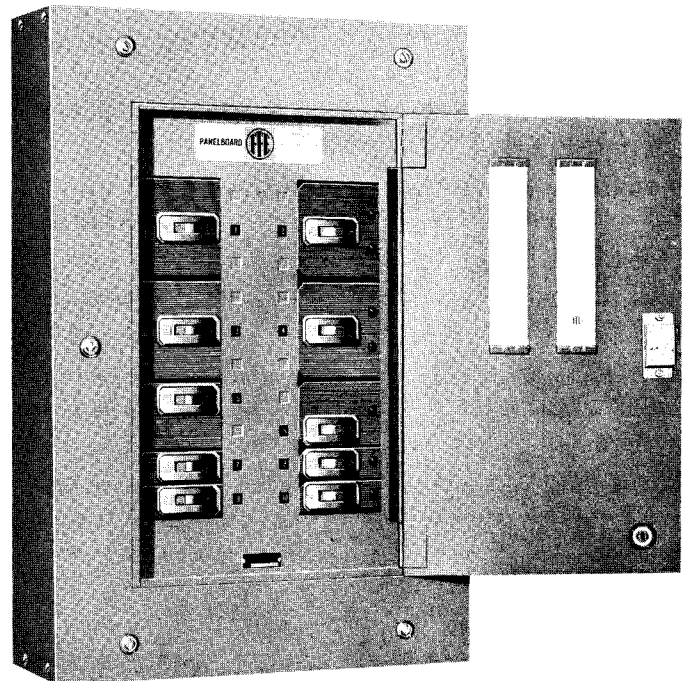
SERVICE: 277/480 VOLT AC. 1 Phase, 2 Wire; 3 Phase, 3 Wire; or 3 Phase, 4 Wire.

MAINS: Main Lug Panels

Rating Amperes	Connectors Suitable for Cu or Al
100, 225	1—#6 Awg-350 MCM
400	{ 1—#4 Awg-600 MCM, or 2—#6 Awg-250 MCM
600	2—#4 Awg-600 MCM

Main Breaker Panels

Rating Amperes	Breaker Frame	Connectors Suitable for Cu or Al
100	EH	1—#6-1/0 Awg
225	FJ	1—#4 Awg-300 MCM
400	JJ	2—#4/0 Awg-250 MCM



MAIN BREAKERS: EH-frame main breaker is mounted horizontally, similar to a branch breaker. FJ- and JJ-frame main breakers are mounted vertically. For other mounting arrangements, consult I-T-E sales office.

BRANCH BREAKERS: E-frame, 15-20 ampere, 1 pole only, rated 10,000 amperes symmetrical a-c interrupting capacity. EH-frame, 15-100 ampere, 2- or 3-pole, rated 14,000 amperes symmetrical a-c interrupting capacity based on NEMA test procedures. Meet Federal Specification W-C-375a dated February 18, 1965, for Class 2a (E frame) and 2d (EH frame).

BOXES: 20" Wide, 5¾" Deep.

GUTTERS: 225A—6" Top and Bottom, 4" Sides.
400A—6" Top and Bottom, 4" Sides.
600A—9" Top and Bottom, 4" Sides.

SEE REVERSE SIDE FOR SELECTION DATA



ET® HEAVY-DUTY PANELBOARDS

SELECTION, APPLICATION & PRICING

NHDP-600A MAINS, 480V AC, 100A MAX. BRANCH

TO DETERMINE NHDP BOX SIZES:

List branch circuits and required circuit space. Note that all circuits are mounted double branch.

Example:

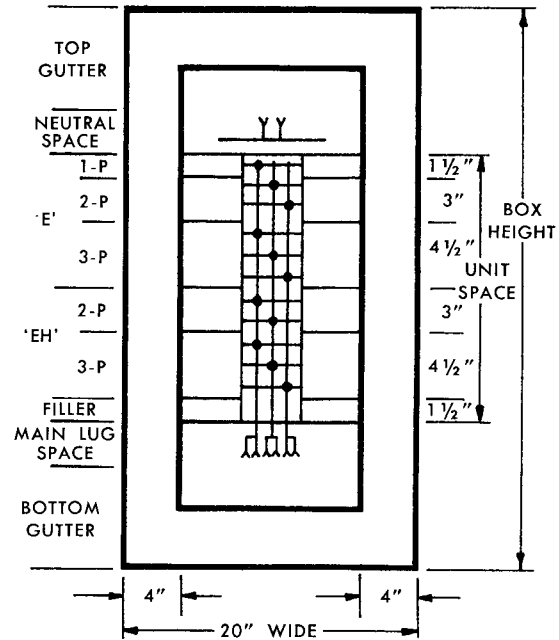
4-15A-1P @ 1½" for each 2 units = 3 inches
 7-20A-1P @ 1½" for each 2 units

Note: one spare 1½" space must be added for proper balance = 6 inches

4-30A-2P @ 3" for each 2 units = 6 inches
 2-40A-3P @ 4½" for each 2 units = 4½ inches
TOTAL OF = 19½ inches

When total circuit space has been established, select proper MAIN capacity column and determine whether main lugs or main breakers are to be employed.

Example: We need 19½" of circuit breaker space . . . for 225A main lugs. Therefore, a 35" high box is required.



BASE PRICE:

MAIN LUG PANELS

Poles	Mains—Amperes			
	100	225	400	600
2	\$60.	\$67.	\$97.	\$120.
3	70.	78.	113.	140.

MAIN BREAKER PANELS

Poles	Mains—Amperes, Breaker		
	100 EH	225 FJ	400 JJ
2	\$148.	\$308.	\$480.
3	168.	378.	572.

NEUTRAL ADDER*

Mains—Amperes			
100	225	400	600
\$24.	\$29.	\$37.	\$53.

* For 1 Ø 3W or 3 Ø 4W.

BRANCH CIRCUIT BREAKERS

Breaker Frame	Number of Poles	Rating Amperes	Rating A-C Volts	Height Inches	List Price	
					Breaker Installed	Provision for Future
E	1	15-50	277	1½	\$19.	\$4.
EH	2	15-50 70-100	480	3	69. 85.	8.
	3	15-50 70-100		4½	89. 104.	10.

BOX SELECTION DATA

Box		Available Circuit Space (Double Branch)—Inches				
		100A, 225A‡		400A		600A
Height Inches	Cat. No.	Main Lugs	Main Breaker FJ	Main Lugs	Main Breaker JJ	Main Lugs
23	W23	6	—	—	—	—
26	W26	9	—	—	—	—
29	W29	12	—	—	—	—
32	W32	15	—	—	—	—
35	W35	18	—	—	—	—
38	W38	21	9	18	—	—
41	W41	24	12	21	—	—
44	W44	27	15	24	—	—
47	W47	30	18	27	—	21
50	W50	31½	19½	—	—	—
53	W53	36	24	31½	18	27
56	W56	—	27	—	21	—
59	W59	42	30	39	24	31½
65	W65	48	36	45	31½	39
71	W71	54	42	51	39	45

‡ For 100A EH-frame main breaker panel use available circuit space shown for 225A main lug panel and deduct from circuit space 3" for 2 pole and 4½" for 3 pole.