

SIEMENS-ALLIS

Switchgear

**PARTS ORDERING
GUIDE**

**TYPE "F"
GROUND AND TEST DEVICE
USED WITH
15-KV METAL-CLAD SWITCHGEAR
WITH 515-2T S.E. OPERATOR**

**18X10255
May, 1979**

www.ElectricalPartManuals.com

HOW TO USE YOUR PARTS ORDERING GUIDE

1. Locate the part or parts to be replaced in one of the drawings in this manual.
2. Identify each part by item number, description and part number. Give drawing figure number in which part is shown.
3. Include device type, rating and device serial number with your order.
4. Place order with your Siemens-Allis representative.

ORDERING EXAMPLE

Type	<u>15KV</u>	Rated Amps	<u>1200</u>	Serial Number	<u>S-87761 A-1</u>
Parts Ordering Guide	<u>18X10255</u>				
<u>Fig.</u>	<u>Item</u>	<u>Description</u>	<u>Part Number</u>	<u>Quantity</u>	
2	11	Indicator Arm	71-113-474-501	1	
3	103	Washer	71-114-297-001	1	
2	16	Lever	72-120-568-502	2	

If required part is not identified in this manual -----

1. Make a copy of the drawing figure in which the part would appear.
2. Indicate with arrows or other markings location of part.
3. Describe or sketch required part.
4. Include device type, rating and device serial number with your order.
5. Place order with your Siemens-Allis representative.

TABLE OF CONTENTS

	<u>Drawing No.</u>	<u>Figure</u>	<u>Page</u>
15-KV Ground and Test Device	72-422-937-603	1	1 & 2
Stored Energy Operator and Frame Assembly	18-394-426-517	2	3-4-5-6-7
Stored Energy Operator Assembly	18-657-852-511	3	8-9-10-11
Stud and Support Assembly	72-320-054-501	4	12

www.ElectricalPartManuals.com

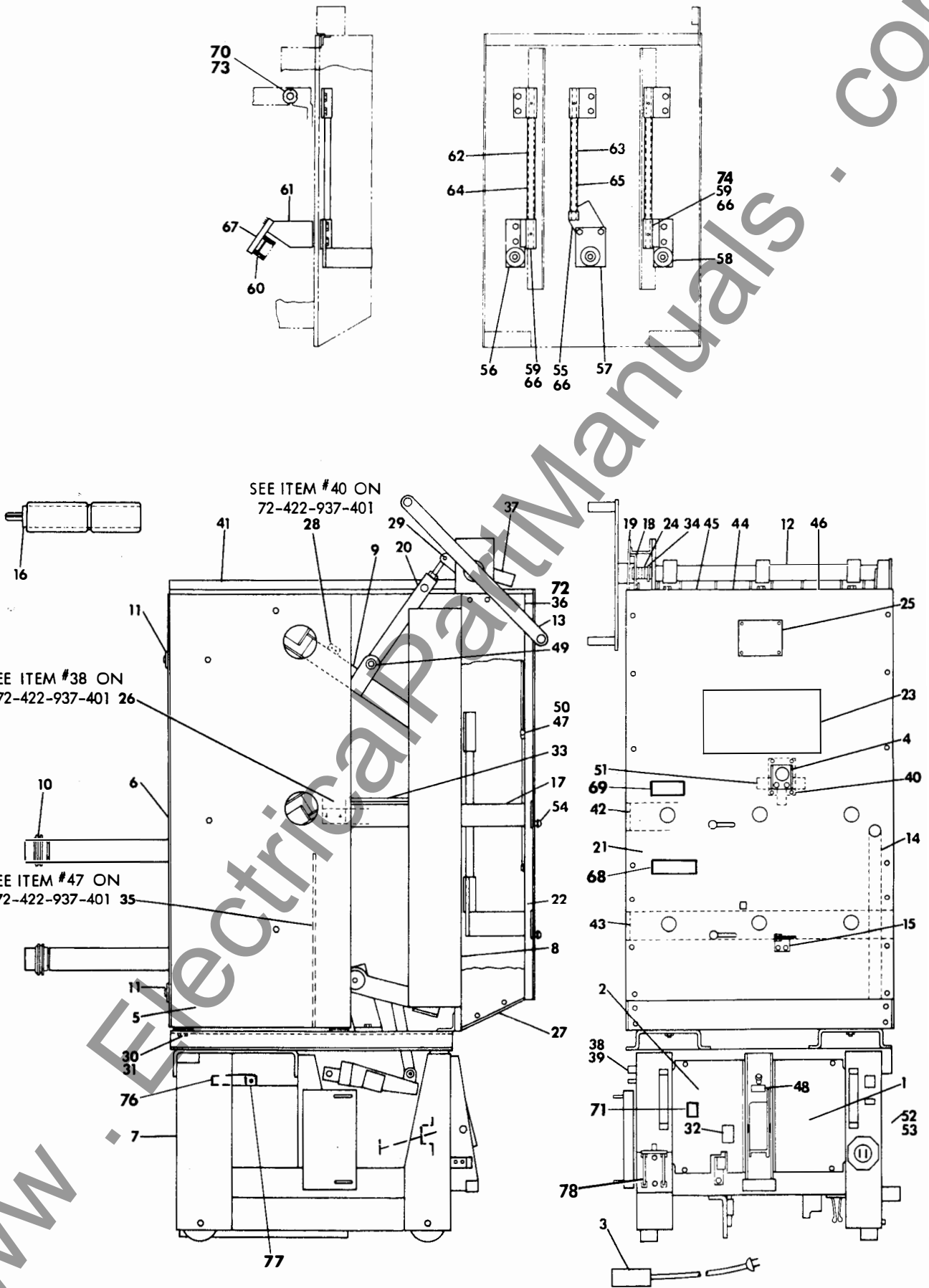


Figure 1. 15-KV Ground and Test Device (72-422-937)

ITEM DESCRIPTION FOR FIGURE 1

ITEM	DESCRIPTION	PART NUMBER	ITEM	DESCRIPTION	PART NUMBER
1	Cover	18-657-469-286	40	Block	72-120-507-001
2	Cover	18-657-765-172	41	Barrier	71-116-621-002
3	Remote Control	71-201-474-501	42	Slide	72-220-104-001
4	Interlock	71-208-615-501	43	Slide	72-220-105-001
5	Stud & Support	72-320-054-501	44	Top Plate	72-120-508-001
6	Plate	72-320-061-001	45	Top Plate	72-120-509-001
7	Frame & Operator	18-394-426-517	46	Top Plate	72-120-510-001
8	Plate	72-320-056-501	47	Strap	71-118-144-001
9	Arm	72-220-097-501	48	Indicator	71-167-932-001
10	Contact Finger, 1200	18-657-456-579	49	Pin	71-176-832-011
10A	Contact Finger, 2000	18-657-456-576	50	Block	71-118-145-001
10B	Contact Finger, 3000	18-657-655-570	51	Clip	72-120-533-001
11	Support	71-205-659-509	52	Outlet Box	00-853-691-004
12	Shaft	71-207-854-504	53	Receptacle	15-171-111-004
13	Handle	71-208-325-503	54	Knob	00-675-365-050
14	Slide	72-120-560-502	55	Bracket	72-120-518-501
15	Locking Device	71-110-503-501	56	Stud – L.H.	71-208-610-502
16	Probe	71-110-676-505	57	Stud Center	71-208-611-503
17	Stud & Tube	72-120-523-501	58	Stud – R.H.	71-208-613-502
18	Plate	71-112-537-501	59	Bracket	71-113-096-501
19	Bracket & Stop	71-113-201-502	60	Contact Finger	71-240-055-510
20	Operating Arm	71-114-260-503	61	Plate	72-120-617-001
21	Plate	72-320-062-501	62	Rod	72-120-097-001
22	Plate	72-320-060-001	63	Rod	72-120-097-002
23	Instruction Plate	18-727-057-002	64	Tubing	72-120-098-001
24	Compression Spring	71-204-606-018	65	Tubing	72-120-098-002
25	Nameplate	18-723-286-010	66	Airseal	00-333-388-002
26	Stop	72-120-102-001	67	Support	72-120-618-001
27	Cover	72-120-106-001	68	Label	18-720-899-001
28	Stop	72-120-107-001	69	Label	18-720-899-002
29	Pin	71-018-611-001	70	Spacer	72-120-501-001
30	Shim	71-110-641-003	71	Label, Caution	15-171-383-002
31	Shim	71-110-641-004	72	Screw	71-117-016-002
32	Indicator	71-111-259-001	73	Washer	71-158-266-015
33	Barrier	72-120-505-001	74	Tape	00-455-081-012
34	Washer	71-112-538-001	75	Bearing Support	18-657-769-373
35	Barrier	72-120-506-001	76	Bracket	18-657-765-173
36	Bracket	72-120-583-501	77	Interlock	
37	Arm	72-120-525-001	78	Knife Switch	00-871-437-003
38	Shim	71-113-679-001			
39	Angle	18-657-765-163			

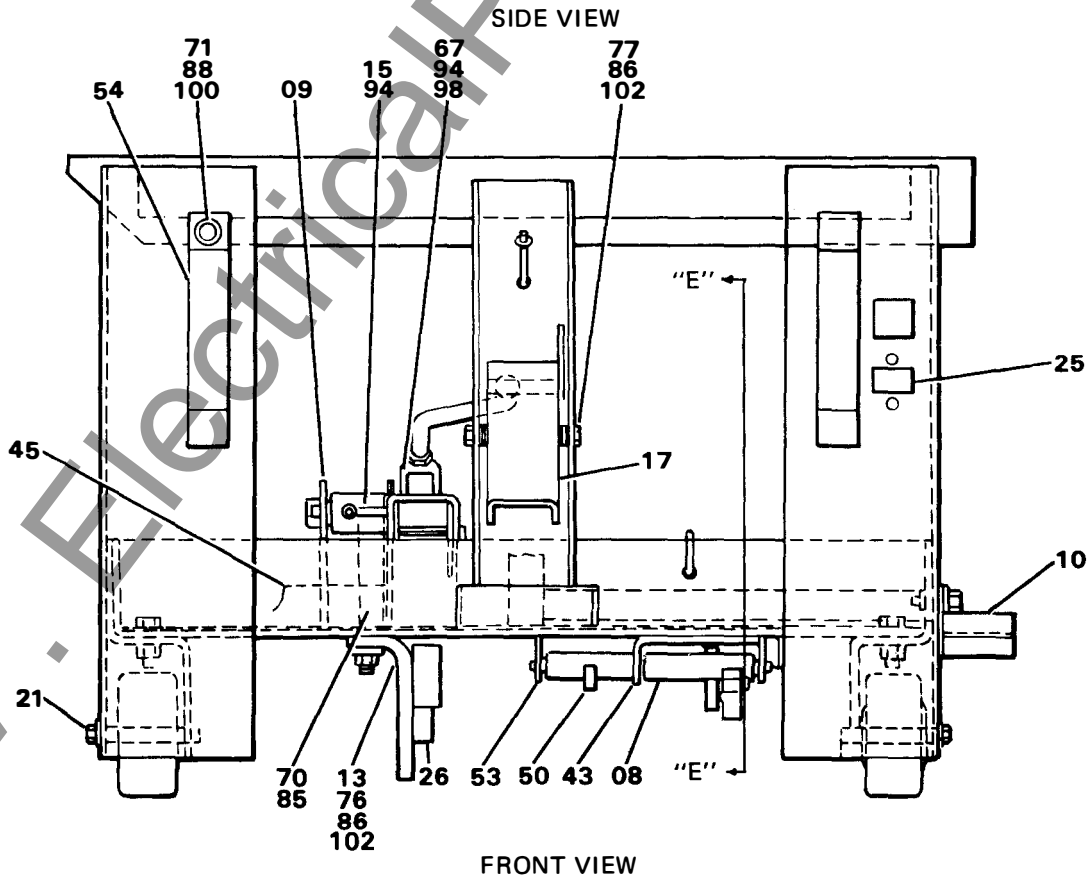
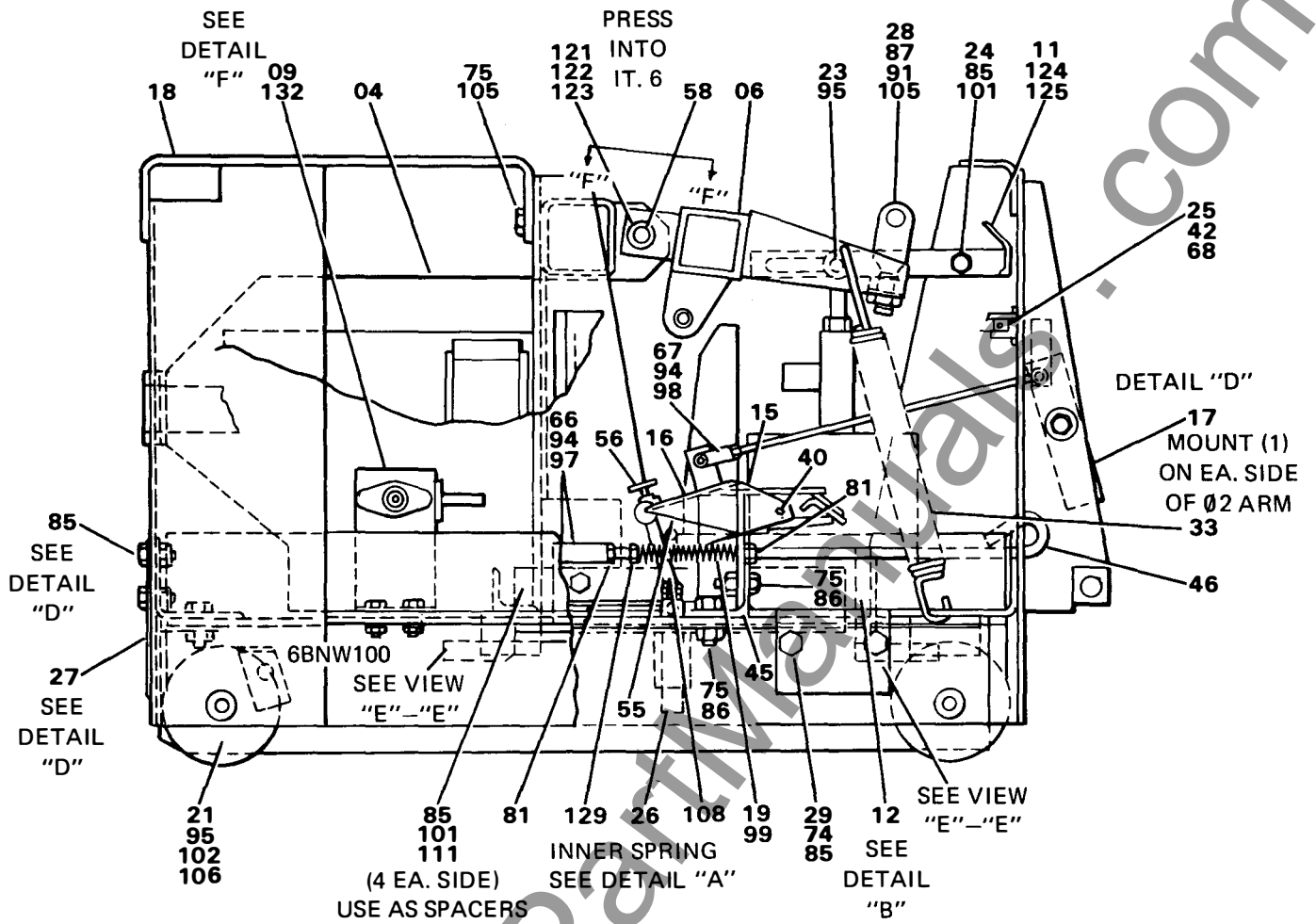


Figure 2. Stored Energy Frame & Operator Assembly

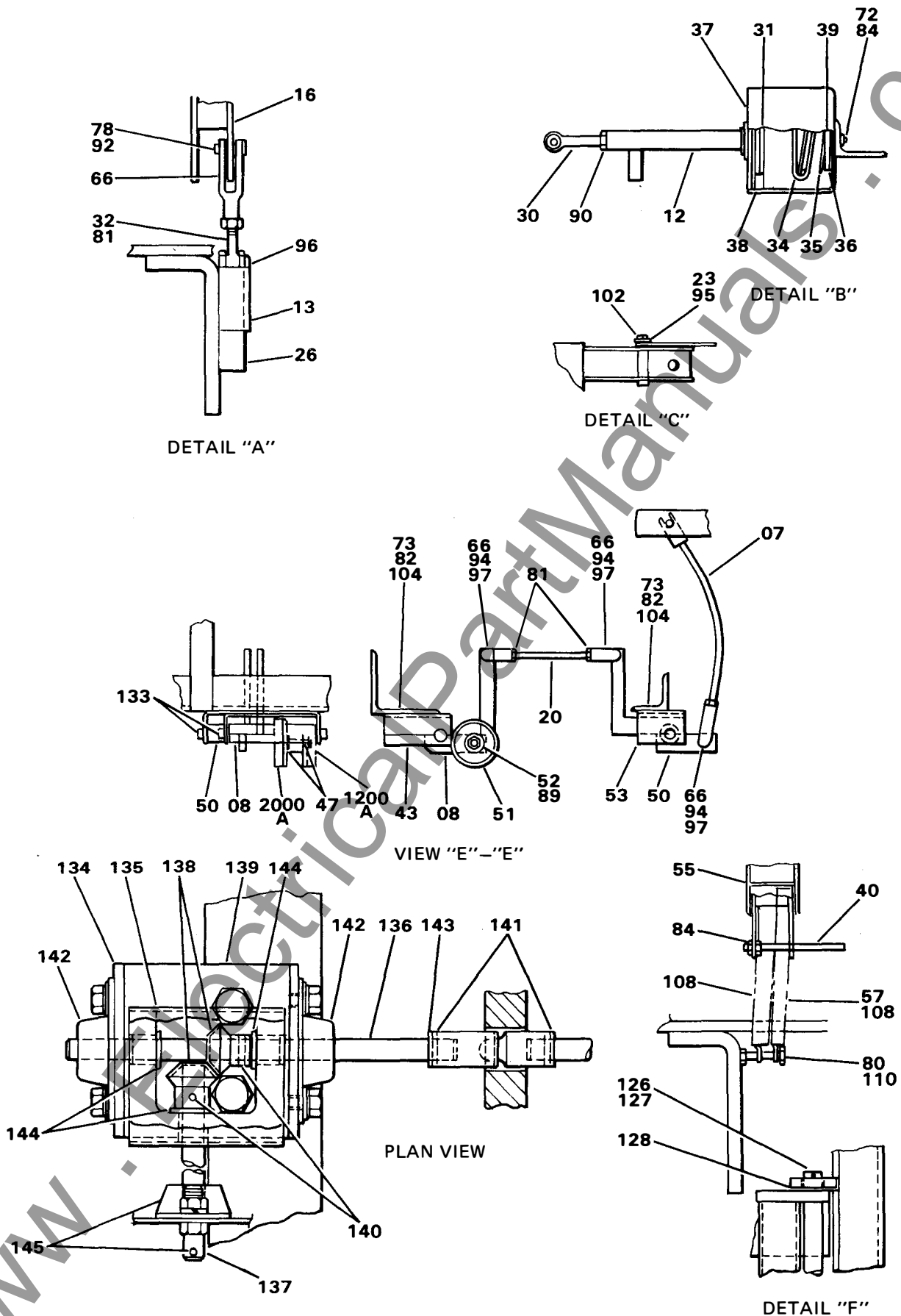


Figure 2. Stored Energy Frame & Operator Assembly (Continued)

ITEM DESCRIPTION FOR FIGURE 2

ITEM	DESCRIPTION	PART NUMBER	ITEM	DESCRIPTION	PART NUMBER
4	Operator Assembly	18-657-852-511	75	Hex Hd. Cap SCR	00-611-315-546
6	(Radius) Arm Assy.	71-302-796-502	76	Hex Hd. Cap SCR	00-611-315-548
7	Push Rod Assembly	18-723-509-501	77	Hex Hd. Cap SCR	00-611-315-562
8	Crank Assembly	18-764-407-501	78	Clevis Pin	15-171-181-001
9	Manual Charge Arrgt.	18-391-037-501	80	Hex Hd. Cap SCR	00-611-315-382
10	Guide Assembly	71-113-437-501	81	Hex Nut	00-631-003-204
11	Indicator Arm Assembly	71-113-474-501	82	Hex Nut	00-631-059-106
12	Piston Assembly	71-114-161-505	83	Locknut	15-171-063-004
13	Guide Assembly	18-657-515-568	84	Locknut	15-171-063-006
15	Bracket Assembly	18-657-502-550	85	Locknut	15-171-063-011
16	Lever Assembly	72-120-568-502	86	Locknut	15-171-063-012
17	Foot Pedal Assy.	18-657-506-562	87	Locknut	15-171-063-010
18	Frame Assembly	18-394-426-516	88	Nut	00-633-083-105
19	Spring	71-204-604-028	89	Nut	15-171-063-005
20	Stud	18-292-228-031	90	Jam Nut	00-631-171-108
21	Pin	71-104-754-034	91	Jam Nut	00-631-171-110
23	Pin	71-104-754-040	92	Cotter Pin	00-671-195-049
24	Stud	71-108-105-003	93	Cotter Pin	00-671-195-115
25	Oper. Counter	71-110-940-002	94	Cotter Pin	00-671-195-119
26	Plunger	71-113-442-001	95	Cotter Pin	00-671-195-191
27	Stop	71-113-478-001	96	Roll Pin	00-671-176-377
28	Yoke End	71-113-487-002	97	Clevis Pin	00-957-211-901
29	Angle	71-113-530-001	98	Clevis Pin	00-957-211-903
30	Rod End	71-113-541-001	99	RD Washer	00-651-007-146
31	Spring	71-113-621-001	100	RD Washer	00-651-007-900
32	Rod End	71-113-633-001	101	RD Washer	00-651-007-214
33	Spring	71-113-669-001	102	RD Washer	00-651-007-285
34	Cup	71-114-151-001	103	Lockwasher	00-655-017-026
35	Comp. Spring	71-114-153-001	104	Lockwasher	00-655-017-032
36	Bumper	71-114-154-001	105	Lockwasher	00-655-017-040
37	Cylinder	71-114-155-003	106	Wheel	15-171-067-002
38	Packing	71-114-156-001	108	Spring	15-171-700-001
39	Valve Disc	71-115-244-001	110	Jam Nut	00-631-171-104
40	Rod	72-120-329-001	111	Hex Hd. Cap SCR	00-611-315-468
42	Spring	71-153-031-001	121	Pin	18-657-464-105
43	Bracket	72-120-708-001	122	Retaining Ring	00-673-165-075
45	Angle	18-657-229-283	123	Washer	71-152-809-026
46	Stud	18-657-765-189	124	Indicator	71-101-247-001
47	Washer	71-152-809-002	125	Indicator	71-101-248-001
50	Crank Assembly	18-723-508-501	126	Pin	71-161-921-004
51	Roller	72-120-706-001	127	Cotter Pin	00-671-195-257
52	Hex Hd. Bolt	15-171-400-001	128	Nyliner Flg.	00-815-279-020
53	Bracket	18-723-506-002	129	Bushing	00-633-025-216
54	Handle	15-171-175-001	132	Nut	00-671-176-187
55	Arm	72-120-399-001	133	Roll Pin	00-671-176-453
56	Switch	15-171-044-004	134	Roll Pin	18-724-562-001
57	Round (Rod)	71-104-107-021	135	Bracket	18-724-562-001
58	Needle Bearing	00-813-119-814	136	Drive Support	18-657-768-200
66	Yoke End Adj.	00-691-701-901	137	Drive Shaft	18-724-563-001
67	Yoke End Adj.	00-691-701-903	138	Drive Shaft	18-724-563-002
68	Self Tap SCR	00-615-573-172	139	Miter Gear	18-657-783-356
69	Hex Hd. Cap SCR	00-611-315-378	140	Cover	18-657-769-375
70	Hex Hd. Cap SCR	00-611-315-468	141	Roll Pin	00-671-176-189
71	Hex Hd. Cap SCR	00-611-315-422	142	Roll Pin	00-671-176-187
72	Hex Hd. Cap SCR	00-611-315-424	143	Bearing	15-171-387-001
73	Hex Hd. Cap SCR	00-611-315-465	144	V Joint	18-657-768-261
74	Hex Hd. Cap SCR	00-611-315-466	145	Bearing	00-815-081-040
			145	Roll Pin	00-671-171-313

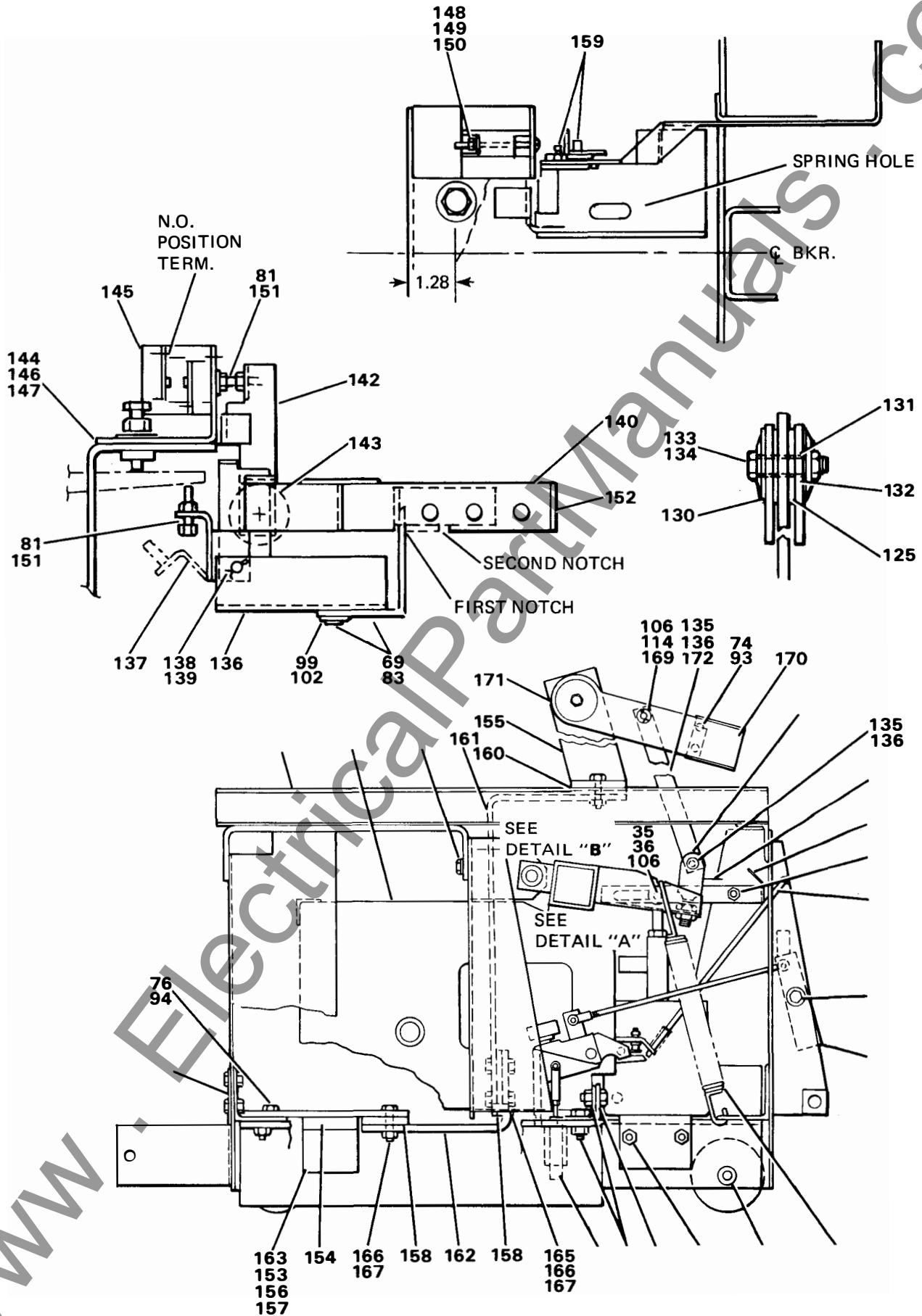


Figure 2. Detail D

ITEM DESCRIPTION FOR DETAIL "D" FIGURE 2

ITEM	DESCRIPTION	PART NUMBER	ITEM	DESCRIPTION	PART NUMBER
136	Bracket	18-657-765-167	157	Contact L.H.	71-207-173-002
137	Bracket	18-657-799-548	158	Spacer	71-116-627-002
138	Pin	72-120-079-005	159	Spacer	71-116-628-003
139	Cotter Pin .09x.5	00-671-195-117	160	Spacer	71-116-628-004
140	Handle	18-728-500-569	161	Connector	71-118-226-001
142	Lever	18-657-805-092	162	Bus	71-118-227-001
143	Washer 1.5 O.D.	00-651-007-155	163	Spring	71-154-294-001
144	Switch Bracket	18-657-799-549	164	HH Screw .38x1.0	00-611-315-466
145	Limit Switch	00-871-351-107	165	HH Screw .38x1.25	00-611-315-468
146	Screw Rd. Hd. #10 x .62	00-615-485-220	166	HH Screw .38x1.75	00-611-315-472
147	Lockwasher #10	00-655-017-022	167	Locknut .38	15-171-063-011
148	Screw Fil. Hd. #8 x 1.75	00-615-223-187	168	Spacer	71-100-107-001
149	Lockwasher #8	00-655-017-020	169	Pin	71-104-754-026
150	Nut #8	00-631-109-108	170	Blade	71-118-120-001
151	HH Screw .25-28 x 1.0	00-611-318-378	171	Arm	72-120-619-001
152	Indicator (Push to Trip)	71-167-932-001	172	Link	71-116-629-002
153	Bolt	71-103-983-502	173	Spring Washer	71-167-537-001
154	Contact Holder	71-116-143-502	174	Tube	71-170-947-005
155	Bracket	71-116-626-501	175	Washer	71-177-196-003
156	Contact R.H.	71-207-173-001	176	HH Screw .5.20x2.0	15-611-318-552
			177	Lock Nut .5.20	15-171-063-008
			178	Cotter Pin .12x1.0	00-671-195-193
			179	Clevis Pin	00-957-212-007

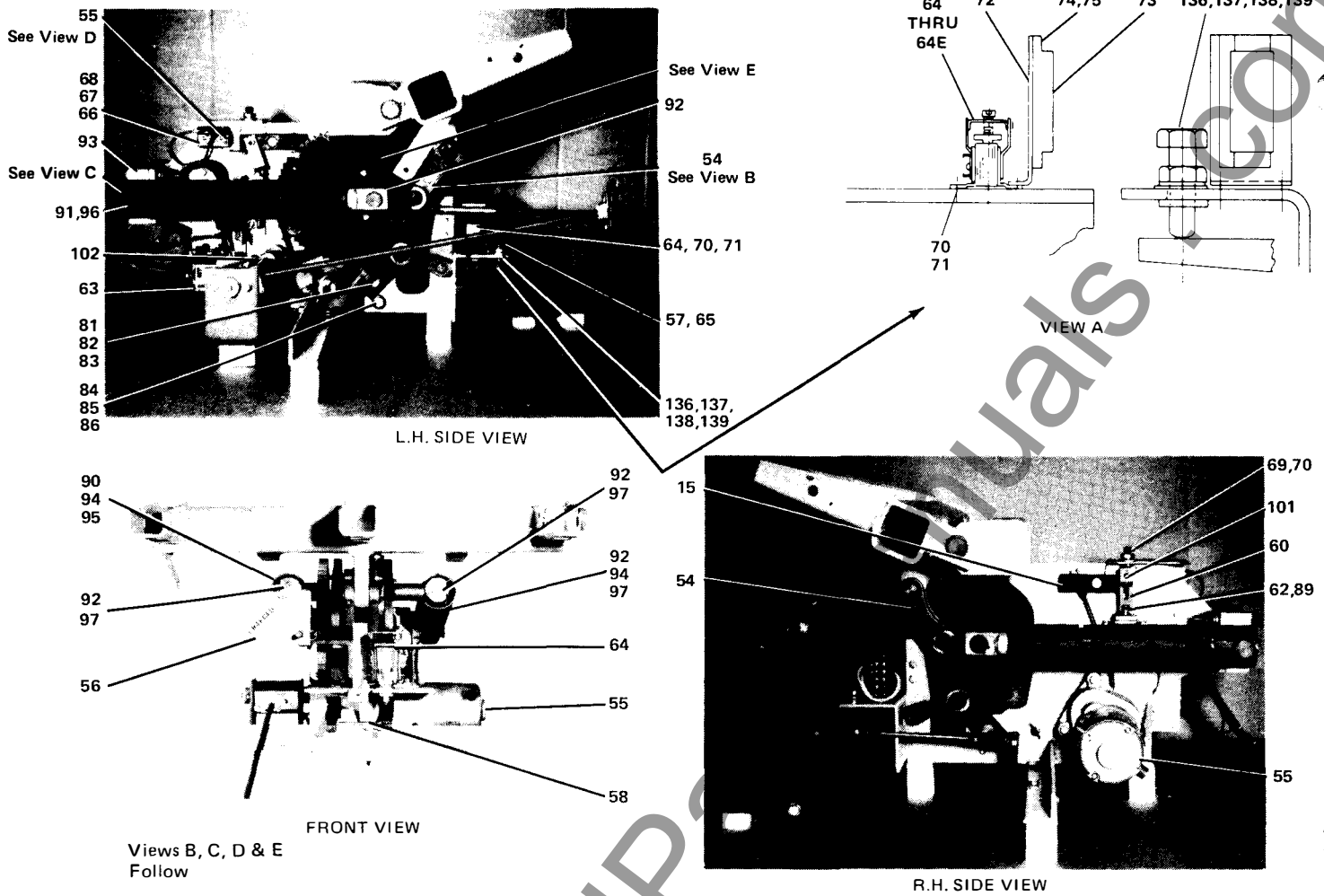
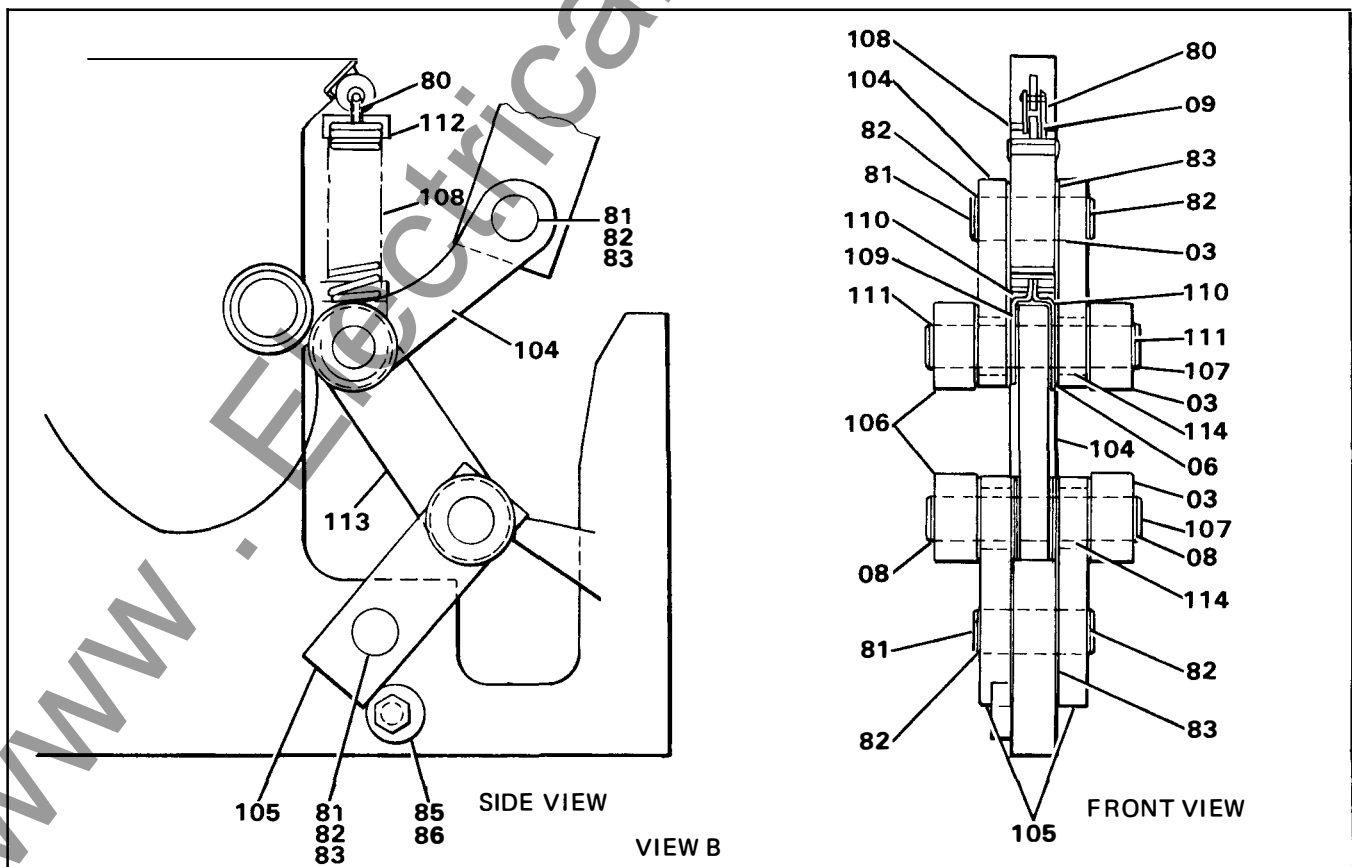
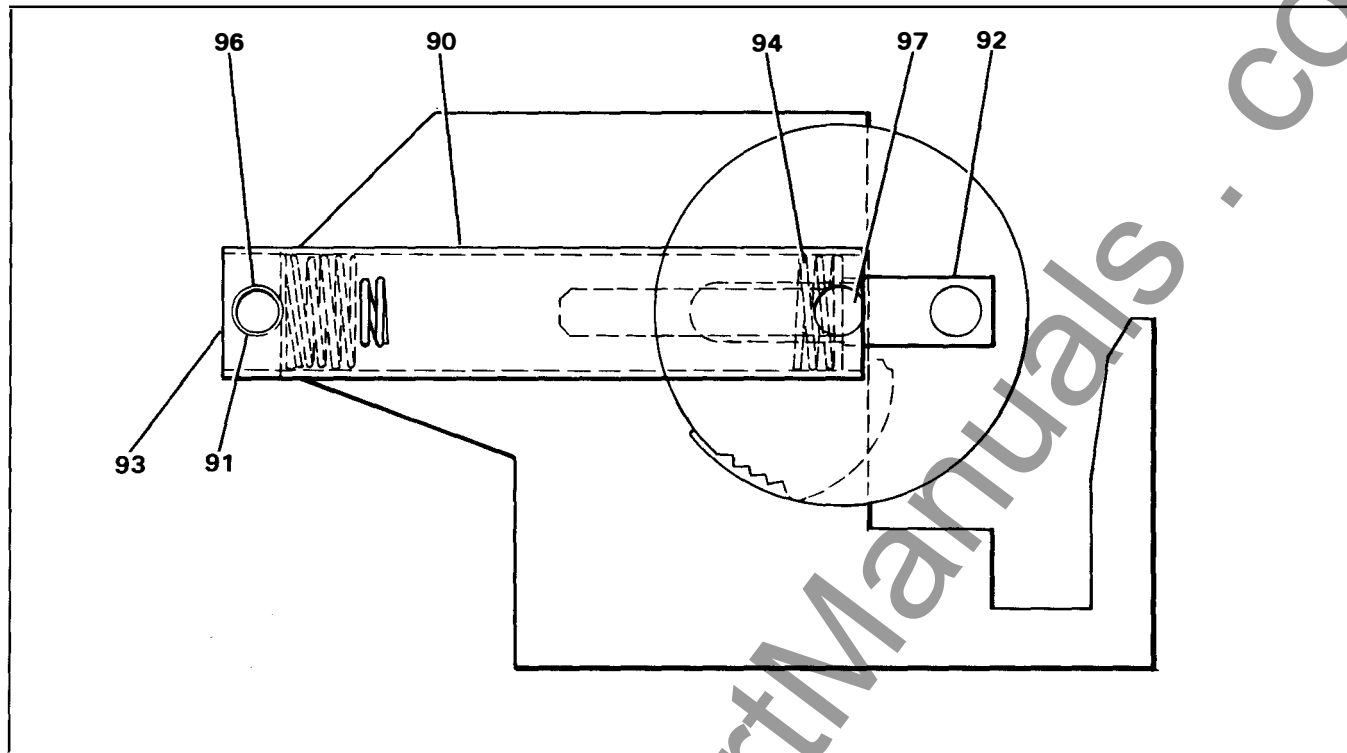
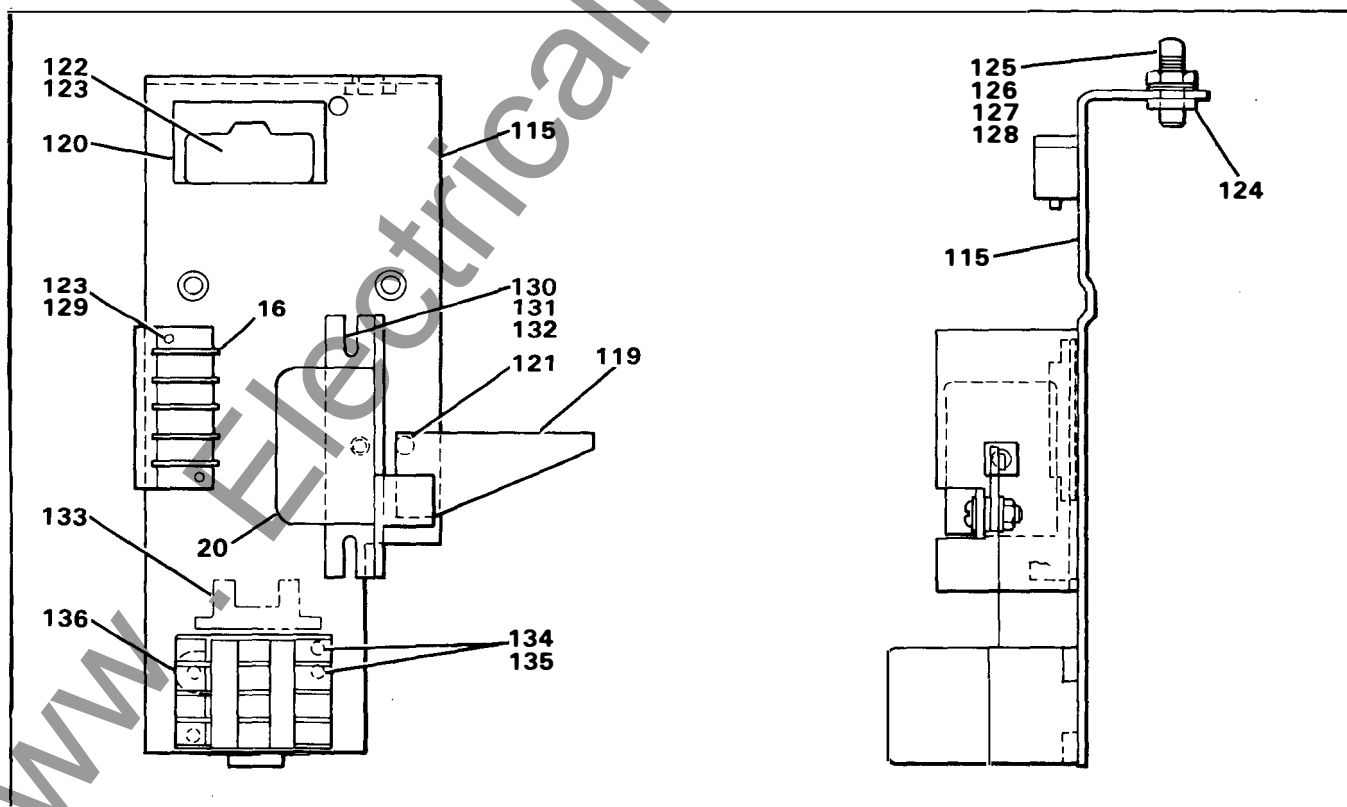


Figure 3. Type 512-2 Stored Energy Operator Assembly

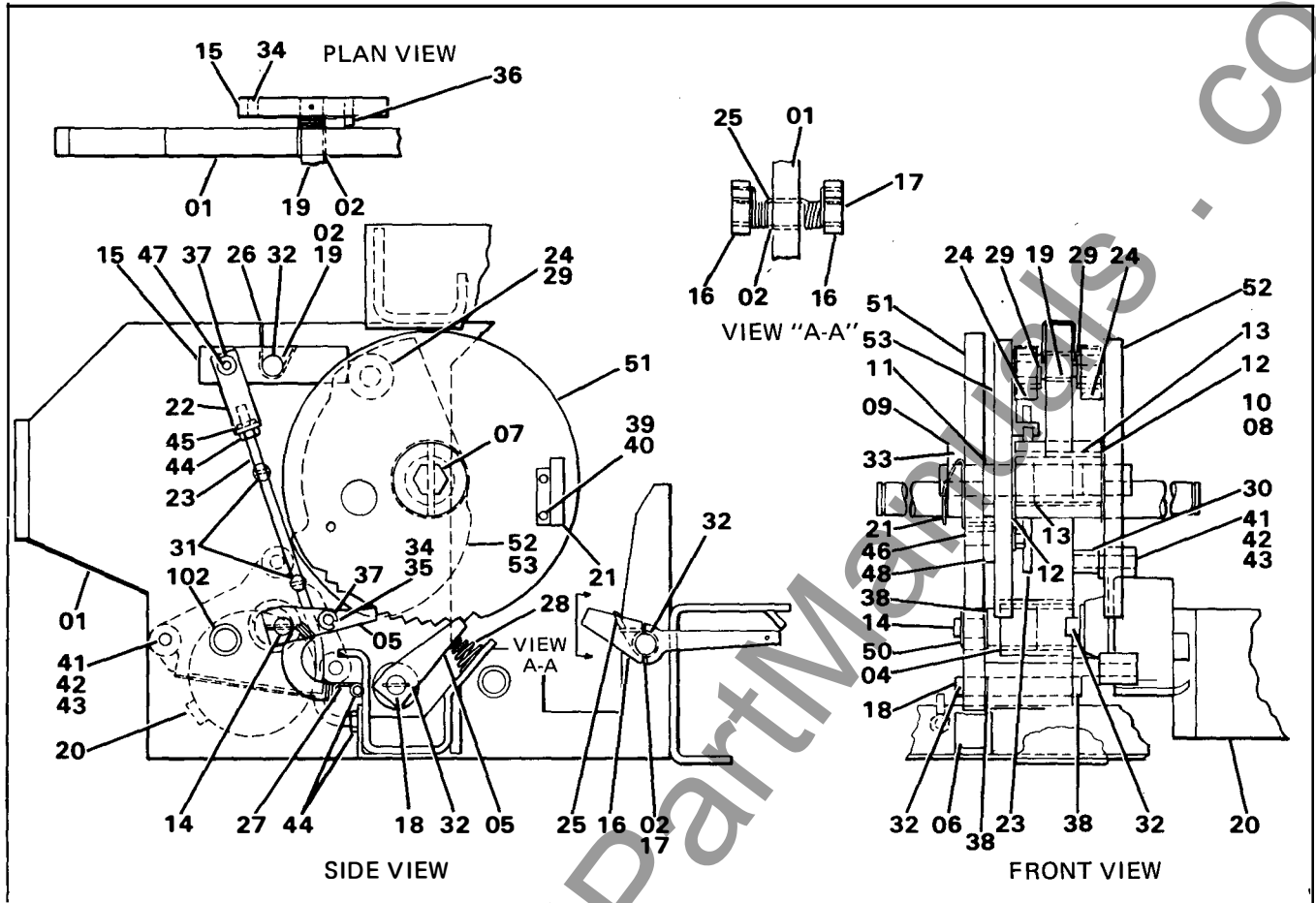




VIEW C



VIEW D



VIEW E
FRAME AND DRIVE ASSY.

ITEM DESCRIPTION FOR FIGURE 3 & VIEWS B, C, D & E

ITEM	DESCRIPTION	PART NUMBER	ITEM	DESCRIPTION	PART NUMBER
1	Frame Assembly	18-469-163-501	18	Pin	18-657-523-064
2	Needle Bearing	00-813-119-810	19	Shaft	18-657-463-389
3	Needle Bearing	00-813-119-814	20	Motor* 48V DC	18-469-223-001
4	Needle Bearing	00-813-119-821		115 AC	18-469-223-002
5	Pawl Assembly	18-657-485-536		125V DC	
6	Stop Bracket Assy.	18-657-816-564		230 AC	18-469-223-003
8	Slit Spacer	18-657-800-113		250V DC	
9	Collar	18-657-467-290	21	Charge Disc.	
10	Inner Race**	18-657-467-335		Actuator	18-657-522-305
11	Spacer	18-158-935-009	22	Bracket	18-657-522-304
12	Thrust Washer	00-815-225-131	23	Interlock Rod	18-657-522-269
13	Needle Bearing	15-813-119-003	24	Roller Bearing	15-813-073-003
14	Pin	18-657-463-368	25	Torsion Spring	18-657-466-081
15	Stop Latch	18-657-463-388	26	Torsion Spring	18-657-466-080
16	Trip Latch	18-657-463-390	27	Pawl Return Spring	18-657-229-240
17	Pin	18-657-464-012	28	Conical Spring	15-837-321-005

ITEM DESCRIPTION FOR FIGURE 3 (Continued)

ITEM	DESCRIPTION	PART NUMBER	ITEM	DESCRIPTION	PART NUMBER
29	Retaining Ring	00-673-165-062	85	Stop	18-657-464-118
30	Spacer	18-158-935-011	86	Washer	00-655-067-200
31	Adj. Screw	00-617-499-375	88	Grease (1 lb. container)	00-337-131-001
32	Roll Pin	00-671-176-194	90	Spring Retainer	18-657-523-038
33	Roll Pin	00-671-176-325	91	Shaft	18-657-463-369
34	Roll Pin	00-671-176-383	92	Drive Block	18-657-824-118
35	Roll Pin	15-671-173-002	93	Bearing Block	18-657-463-370
36	Roll Pin	00-671-171-375	94	Spring	15-171-331-001
37	Washer	18-657-522-303	96	Retaining Ring	00-673-165-100
38	Washer	15-171-091-005	97	Retaining Ring	00-673-165-087
39	Screw	00-615-245-218	98	Shim	18-657-784-007
40	Lockwasher	00-655-017-022	101	Washer	71-114-297-001
41	Screw	00-611-315-392	102	Screw	00-615-114-556
42	Washer	00-651-007-160	103	Washer	71-114-297-001
43	Lockwasher	00-655-017-026	104	Link	71-118-258-504
44	Elastic Stop Nut	00-633-025-116	105	Link	18-657-510-524
45	Jam Nut	00-631-143-104	106	Roller	15-813-073-001
46	Roll Pin	00-671-176-373	107	Pin	18-657-464-104
47	Roll Pin	00-671-171-379	108	Spring	18-657-523-331
48	Spacer	18-657-523-278	109	Washer	71-152-809-026
50	Roll Pin	00-671-176-189	110	Spring Holder	18-657-523-332
51	Ratchet Assembly	18-390-202-501	111	Retaining Ring	00-673-165-075
52	Cam Assembly ***	18-389-061-501	112	Spring Anchor	18-657-523-333
53	Cam Assembly	18-389-061-502	113	Link	18-657-800-115
54	Linkage Assembly (Consists of items 104 to 113)		114	Needle Bearing	00-813-119-813
55	Motor & Closing Control	18-390-246-501	115	Plate	18-723-641-001
56	Indicator Assembly	18-723-511-502	116	Terminal Block	00-857-036-012
57	Bracket*	18-657-782-273	117	Closing Latch AC	15-171-323-001
58	Pin	18-724-690-003	118	Closing Latch DC	15-171-323-002
60	Solenoid Trip Link Assembly	18-657-770-518	119	Actuator Arm	18-657-769-376
62	Clevis Pin	15-171-751-001	120	Shield	18-657-468-090
63	Solenoid Closing* 48V DC	15-171-339-001	121	Extension Spring	18-657-523-061
63A	125V DC	15-171-339-002	122	Screw	00-615-471-130
63B	250V DC	15-171-339-003	123	Washer	00-655-047-060
63C	120V AC	15-171-339-004	124	Nut	14-147-052-002
63D	240V AC	15-171-339-005	125	Screw	00-617-247-468
63E	24V DC	15-171-339-012	126	Nut	00-631-171-106
64	Solenoid Trip* 24V DC	15-171-339-006	127	Washer	00-655-017-032
64A	48V DC	15-171-339-007	128	Washer	00-651-007-230
64B	125V DC	15-171-339-008	129	Screw	00-615-471-124
64C	250V DC	15-171-339-009	130	Screw	00-615-485-216
64D	120V AC	15-171-339-017	131	Washer	00-655-017-022
64E	230V AC	15-171-339-018	132	Washer	00-651-007-907
65	Trip Latch Switch* AC	18-657-657-565	133	Relay, Anti-Pump 125V DC	00-871-797-107
66	Strip	18-657-467-239	133A	Relay, Anti-Pump 250V DC	00-871-797-108
67	Screw	00-615-223-172	133B	Relay, Anti-Pump 48V DC	00-871-797-109
68	Lockwasher	00-655-017-020	133C	Relay, Anti-Pump 24V DC	00-871-797-115
69	Screw	00-615-245-222	133D	Relay, Anti-Pump 120V AC	15-171-405-002
70	Lockwasher	00-655-017-022	133E	Relay, Anti-Pump 230V AC	15-171-405-001
71	Screw	00-615-245-218	134	Washer	00-655-047-080
72	Term. Block Supp. Bracket	18-657-524-111	135	Screw	00-615-223-174
73	Term. Block	00-857-036-012	136	Relay	25-134-022-501
74	Screw	00-615-471-124			25-134-022-502
75	Lockwasher	00-655-047-060	137	Capacitor Trip Device*	71-301-550-502
80	Chain Link	00-831-349-065			
81	Pin	18-657-464-105			
82	Retaining Ring	00-673-165-075			
83	Washer	71-152-809-026			

*Give breaker S/N and control voltage when ordering item.

**Must be supplied in pairs.

***Must be supplied as matched set.

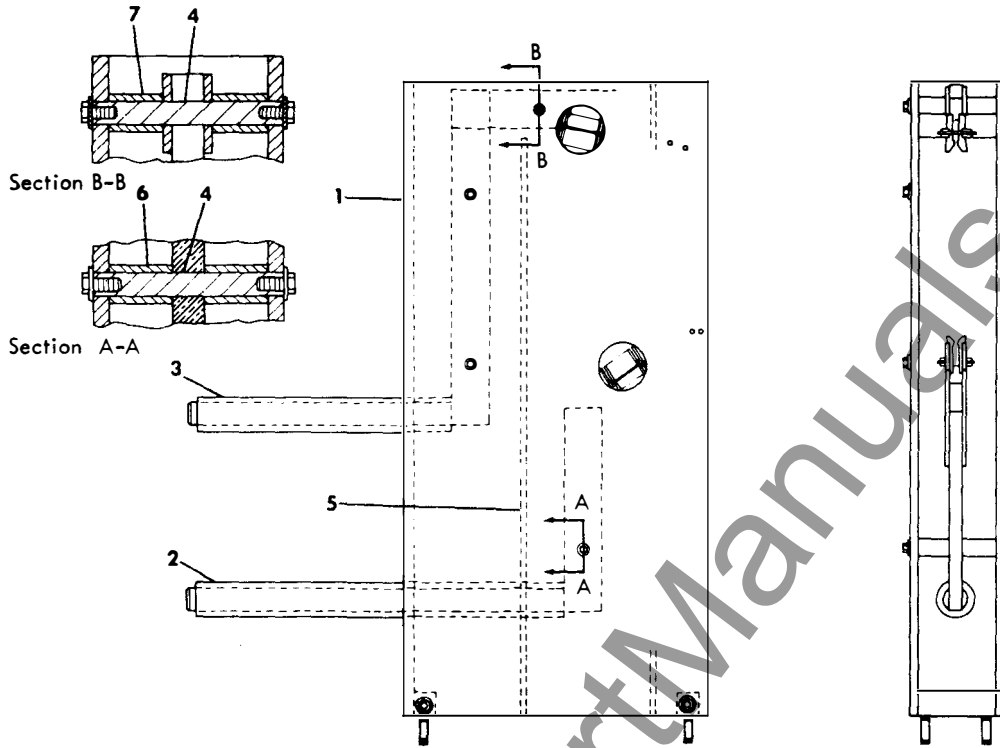


Figure 4. Stud and Support Assembly (72-320-054)

ITEM DESCRIPTION FOR FIGURE 4

ITEM	DESCRIPTION	PART NUMBER	ITEM	DESCRIPTION	PART NUMBER
1	Plate	71-207-937-504	4	Rod	71-110-282-001
2	Stud	72-220-095-501	5	Barrier	72-120-506-002
3	Stud	72-220-096-501	6	Spacer	72-120-613-001
			7	Spacer	72-120-613-002

www . ElectricalPartManuals . com

SIEMENS-ALLIS

Switchgear Division
P. O. Box 14505
West Allis, Wisconsin 53214
414 475-3600

www.ElectricalPartManuals.com