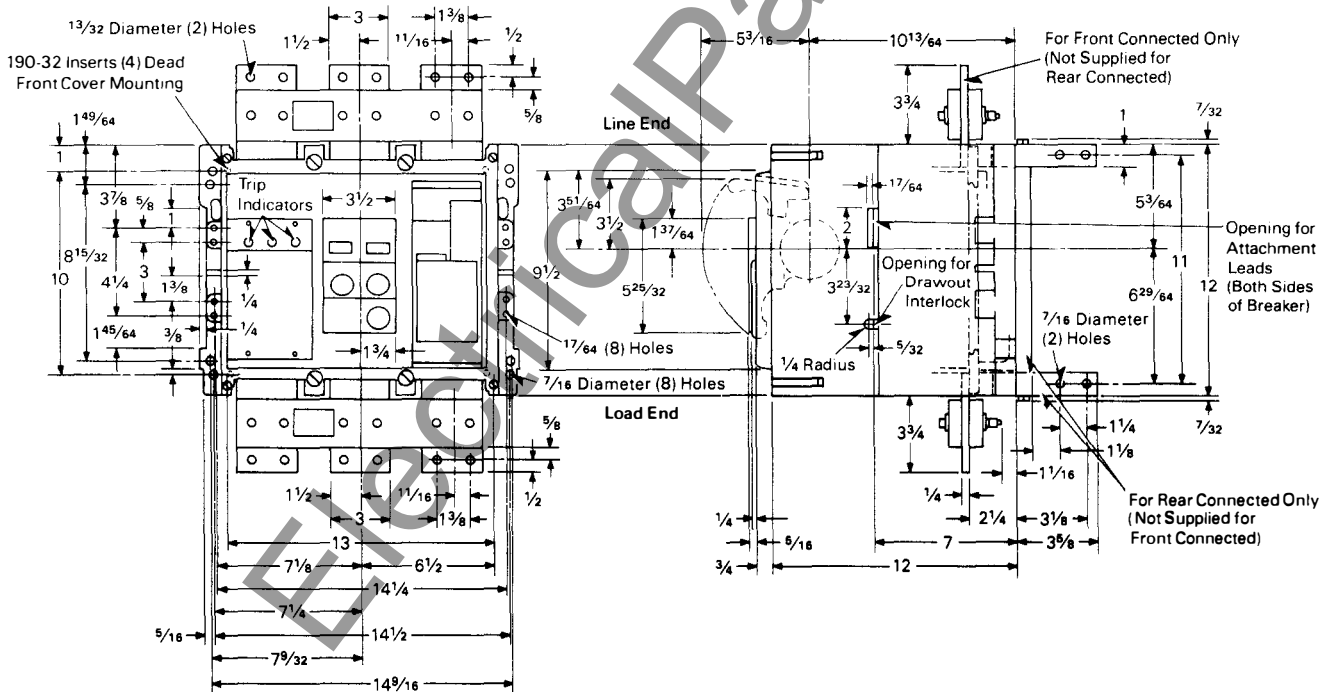
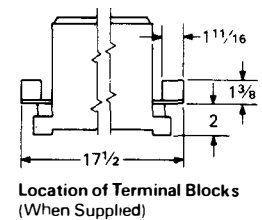
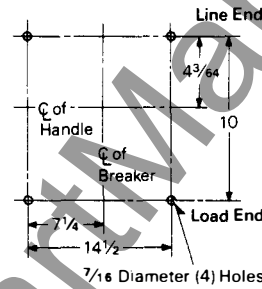
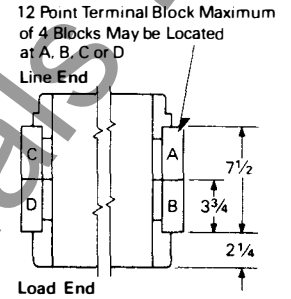
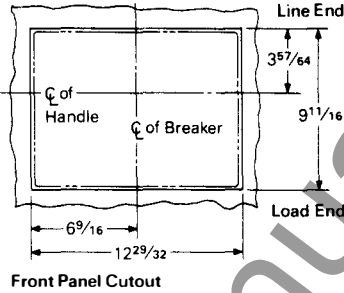
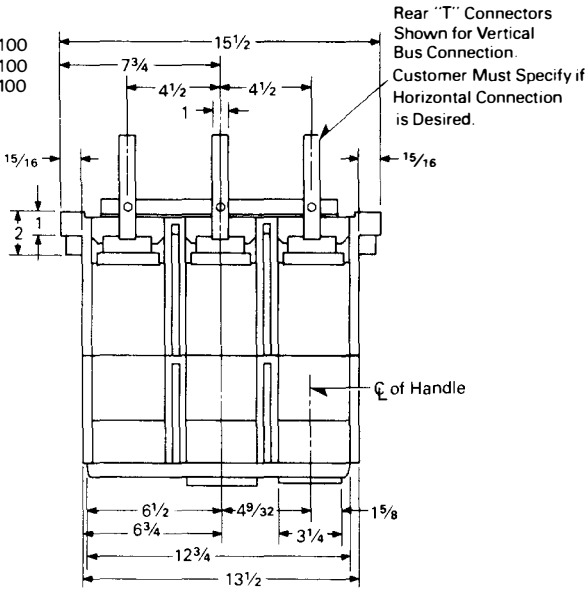




Fixed Mounting Breakers (Front and Rear Connected)

Frame Rating

- 250 Amp - SPB 100
- 800 Amp - SPB 100
- 1200 Amp - SPB 100



Reproduced From Drawing 1369D87

Westinghouse Electric Corporation
Low Voltage Breaker Division
Beaver, Pennsylvania 15009



June, 1984
 Supersedes Dimension Sheet 29-870
 pages 5-6 dated January, 1982
 Mailed to: E, D, C/29-800A

Fixed Mounting Breakers, Front and Rear
 Connected

Page 5: SPB-100 (2000, 2500, 3000 Amp.)
 Front Connected
 Page 6: SPB-150 (2000, 2500, 3000 Amp.)
 Front Connected

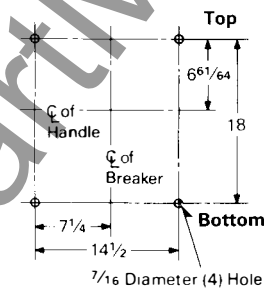
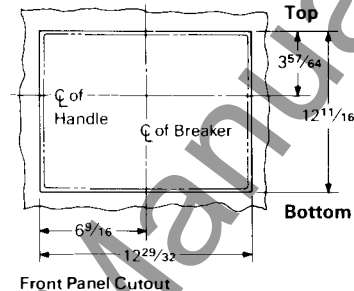
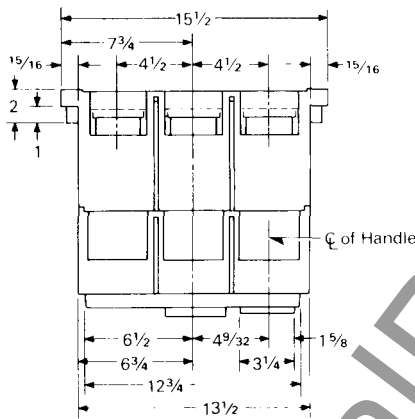
Systems Pow-R Breakers

Fixed Mounting Breakers (Front Connected)

Frame Rating

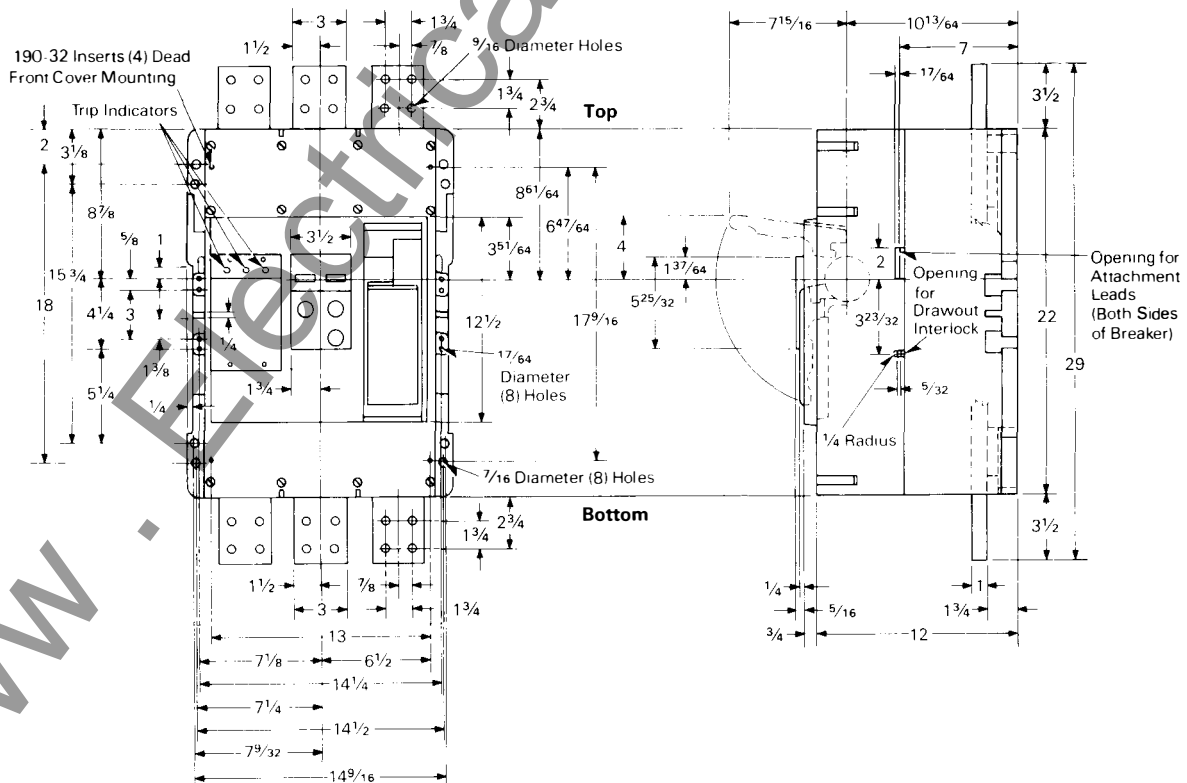
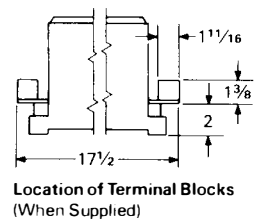
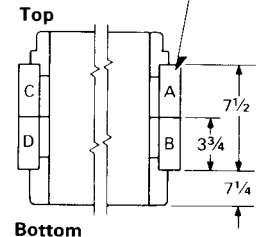
2000 Amp $\text{\textcircled{C}}$ SPB100
 2500 Amp - SPB100
 3000 Amp - SPB100

● Older Design -
 3000 Amp Size.



Drilling Plan (Use Four (4) 3/8" Diameter Bolts for Mounting Breaker)

12 Point Terminal Block Maximum
 of 4 Blocks May be Located
 at A, B, C or D





December, 1986
 Supersedes Dimension Sheet 29-870
 pages 7-8 dated June, 1984
 Mailed to: E, D, C/29-800A

Fixed Mounting Breakers, Front and Rear
 Connected

Systems Pow-R Breakers

Page 7: SPB-100 and SPB-150 (2000, 2500,
 3000 Amp.) Rear Connected
 Page 8: SPB-100, SPB-150 (3000 Amp.) Rear
 Connected

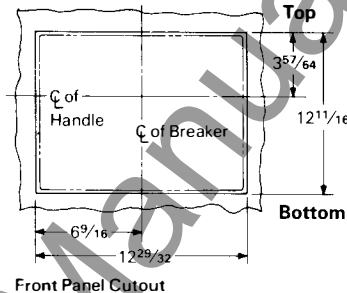
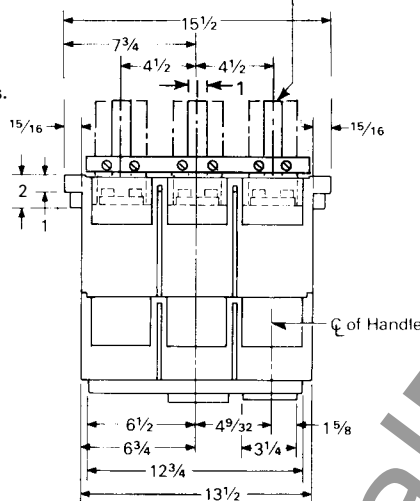
Fixed Mounting Breakers (Rear Connected)

Frame Rating

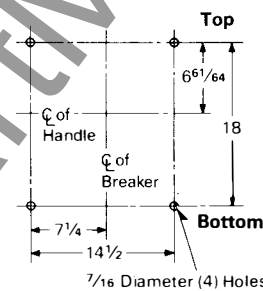
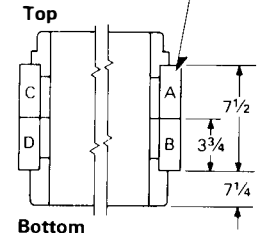
2000 Amp[Ⓞ] SPB100, SPB-150
 2500 Amp - SPB100, SPB-150
 3000 Amp - SPB100, SPB-150[Ⓜ]

Rear "T" Connectors can be
 Turned to Horizontal Position
 on 2000A & 2500A Breakers Only.

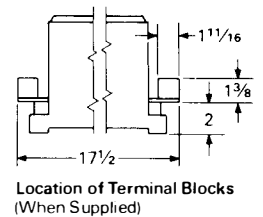
- Ⓞ Older Design - 3000 Amp Size.
- Ⓜ See page 8 for 3000 Amp rear connections.



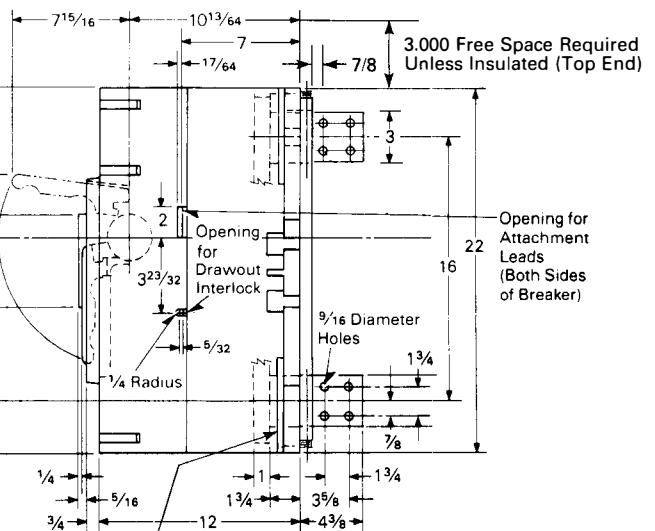
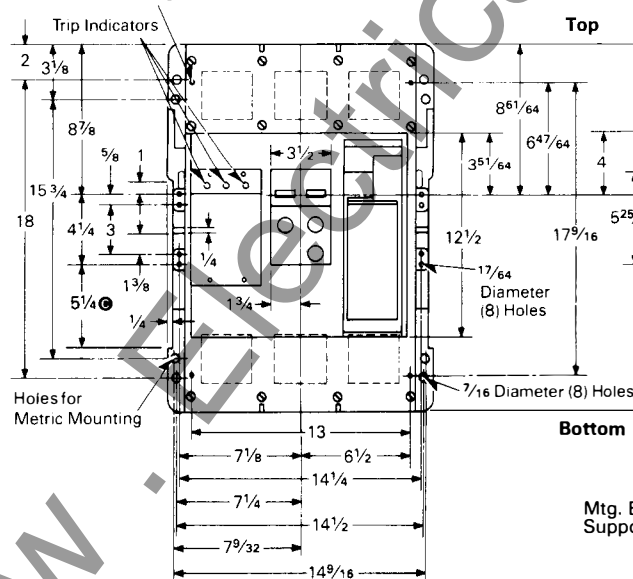
12 Point Terminal Block Maximum
 of 4 Blocks May be Located
 at A, B, C or D



Drilling Plan (Use Four (4) 3/8" Diameter Bolts for Mounting Breaker)



190-32 Inserts (4) Dead
 Front Cover Mounting



Mtg. Bolt Pad & "T" Connector
 Support Supplied With SPB150 Only.

Note :
 Suitable for Continuous Operation at 80% of Rating Plug in an
 Enclosure Without Ventilation.

100% Rated Breakers - Suitable for Continuous Operation at
 100% of Rating Plug if Used With Rear Connectors in a Minimum
 Enclosure 42" High x 18" Wide x 17" Deep (Including T-Connec-
 tors). Ventilation is Required of 76 Sq. Inches in the Front of the
 Enclosure and 175 Sq. Inches in the Rear.

For 3000A 100% Rated Breakers Heat Sinks are Required. See
 Page 8.

Reproduced From Drawing 2614D47, Sheet 1

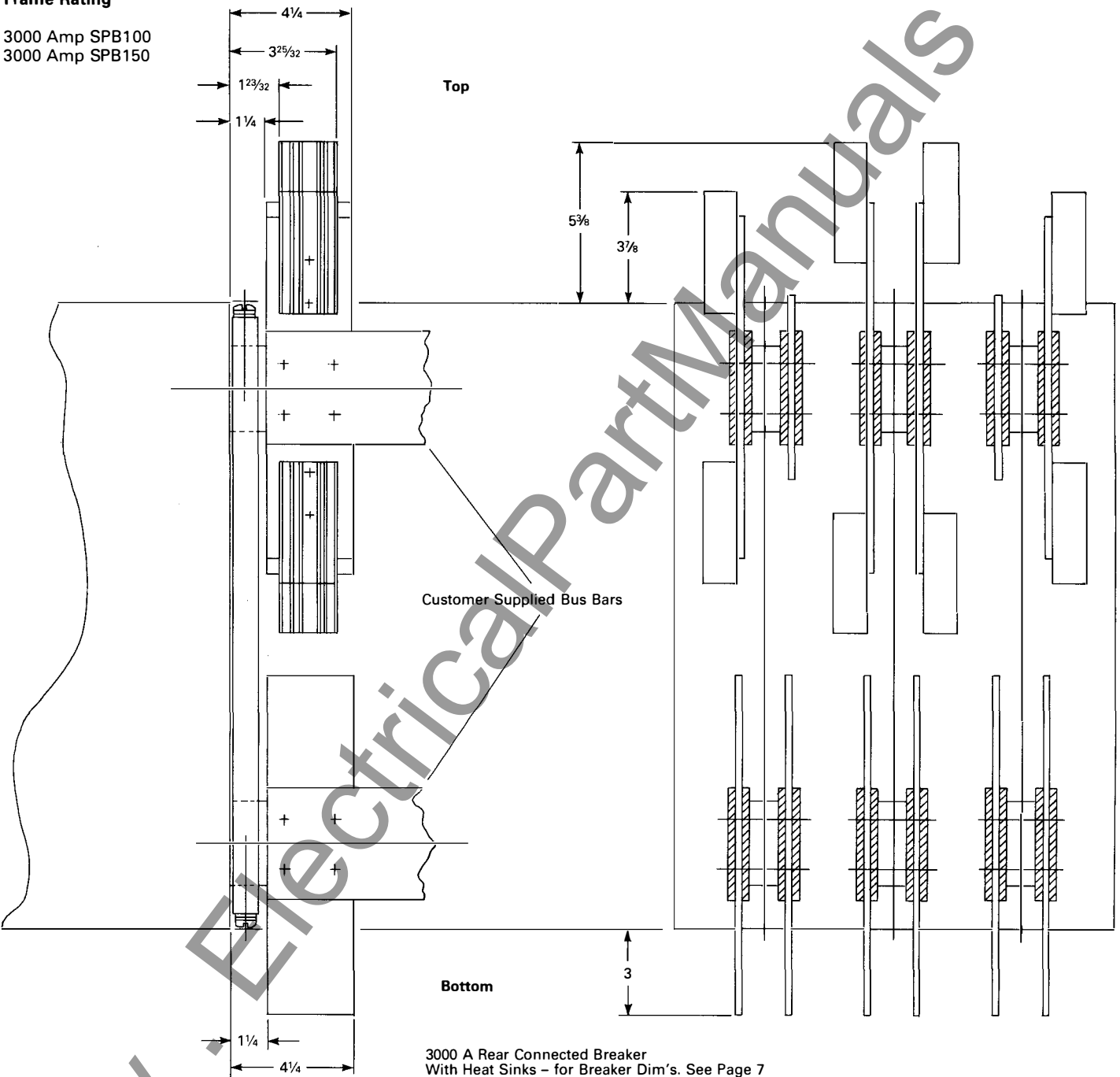
Ⓜ Changed since previous issue.



Fixed Mounting Breakers (Rear Connectors)

Frame Rating

3000 Amp SPB100
3000 Amp SPB150



Reproduced From Drawing 2614D47, Sheet 2

Westinghouse Electric Corporation
Distribution and Control Business Unit
Components Division
Beaver, Pennsylvania 15009

Printed in USA



www.ElectricalPartManuals.com

Printed in USA

Westinghouse Electric Corporation
Components Division
Beaver, Pennsylvania 15009

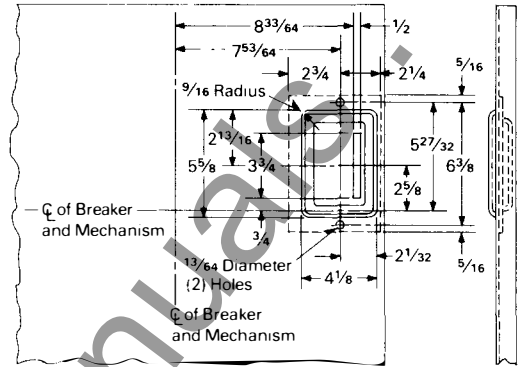
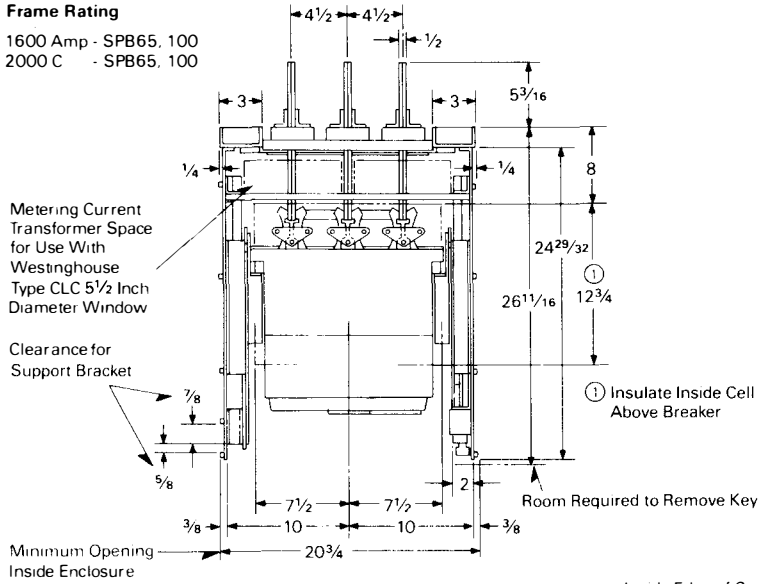
May, 1984



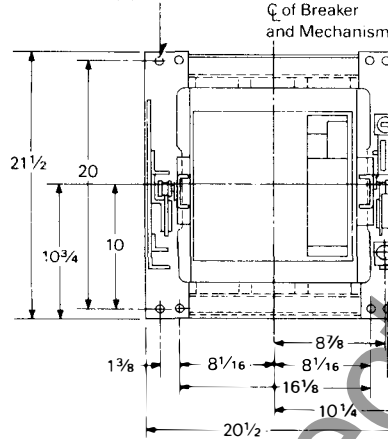
Drawout Mounting Breakers

Frame Rating

1600 Amp - SPB65, 100
2000 C - SPB65, 100



9/16 Diameter (8) Holes

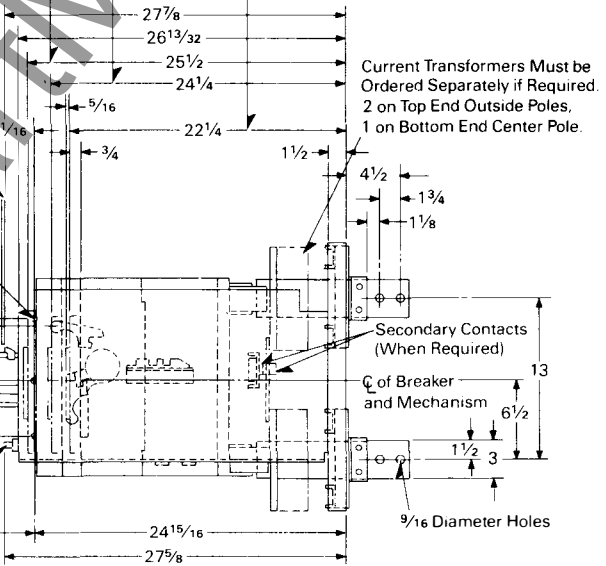


Inside Edge of Cover

3/8 Diameter (3) Holes on Each Side Plate For Use to Support Drawout Frame to Enclosure

Maximum Height of Breaker Charging Handle

Key Interlock Option



- Notes:**
- Suitable for Continuous Operation at 80% of Frame Rating in an Enclosure Without Ventilation.
 - Suitable for Continuous Operation at 100% of Frame Rating if Used in a Minimum Enclosure 22" High X 21" Wide X 33 1/2" Deep With a Minimum Ventilation of 36 Square Inches for Compact 2000 Amp Breaker
 - Ventilation is not Required for 1600 Amp Breaker
- Caution:** To Prevent Over-Heating When Cable Connected Use Copper Conductors Only

Reproduced From Drawing 2614D37



January, 1982
New Information
Mailed to: E, D, C/1901, 2807/DS

Drawout Mounting Breakers

Page 15: SPB-150 (2000, 2500, 3000 Amp.)
Page 16: SPB-100 (4000 Amp.)

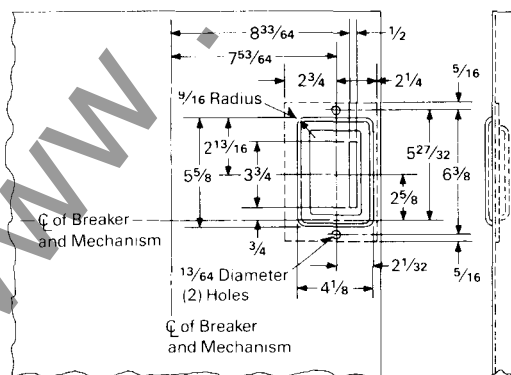
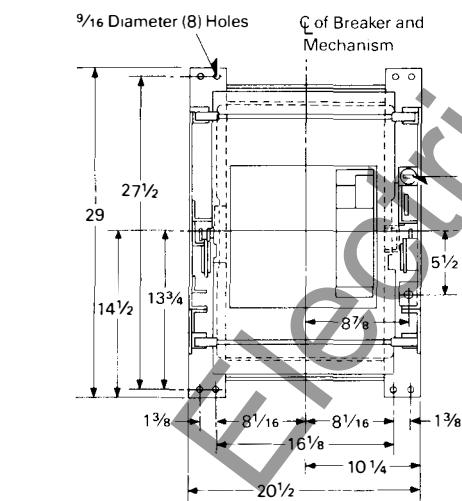
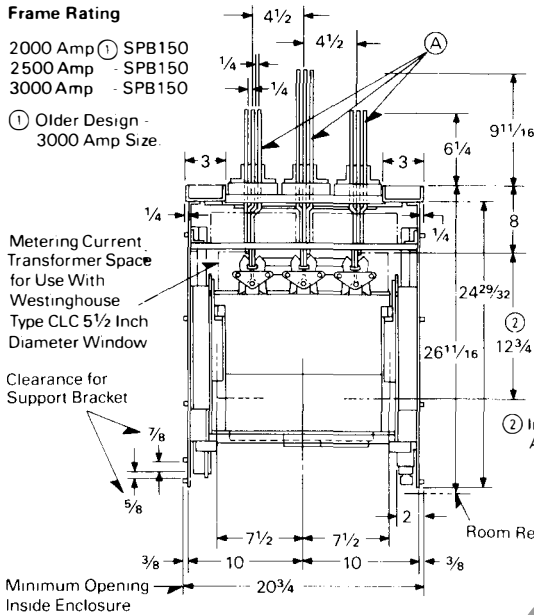
Systems Pow-R Breakers

Drawout Mounting Breakers

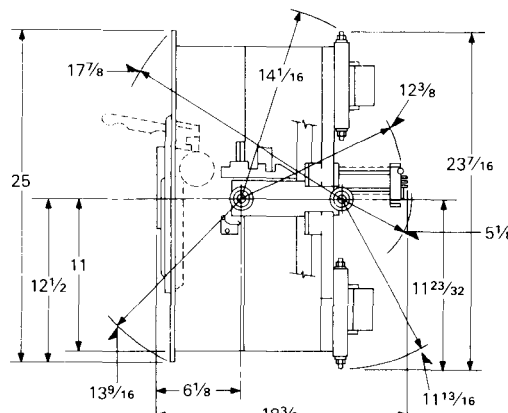
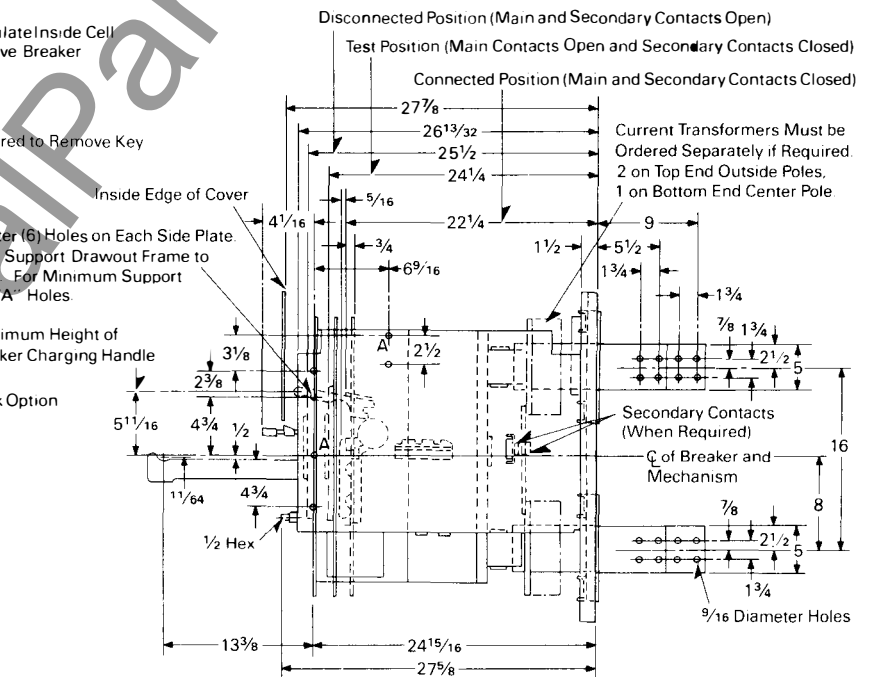
Frame Rating

2000 Amp ① SPB150
2500 Amp - SPB150
3000 Amp - SPB150

① Older Design -
3000 Amp Size



Door Cutout and Assembly of Position Indicating Escutcheon



Dimensions for Rotating in With-Drawn Position

Notes:

Suitable for Continuous Operation at 80% of Frame Rating in an Enclosure Without Ventilation.

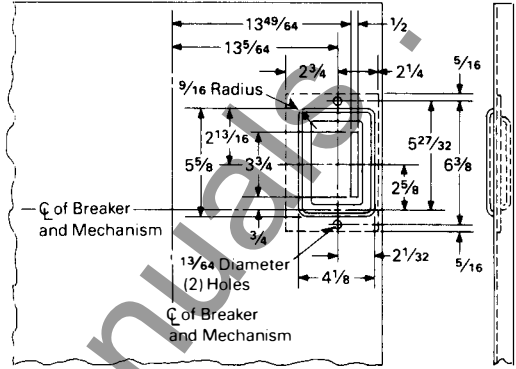
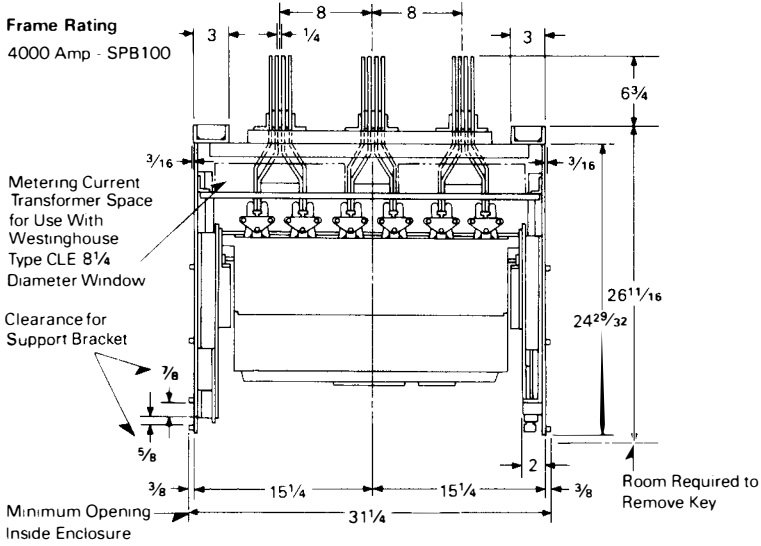
Suitable for Continuous Operation at 100% of Frame Rating if Used in a Minimum Enclosure 36" High X 21" Wide X 38" Deep With Minimum Ventilation of 160 Square Inches in Either the Front or Side of The Enclosure

Caution: To Prevent Over-Heating When Cable Connected Use Copper Cables Only.



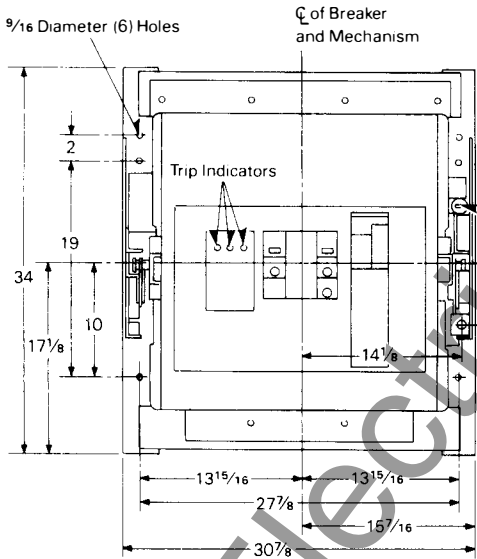
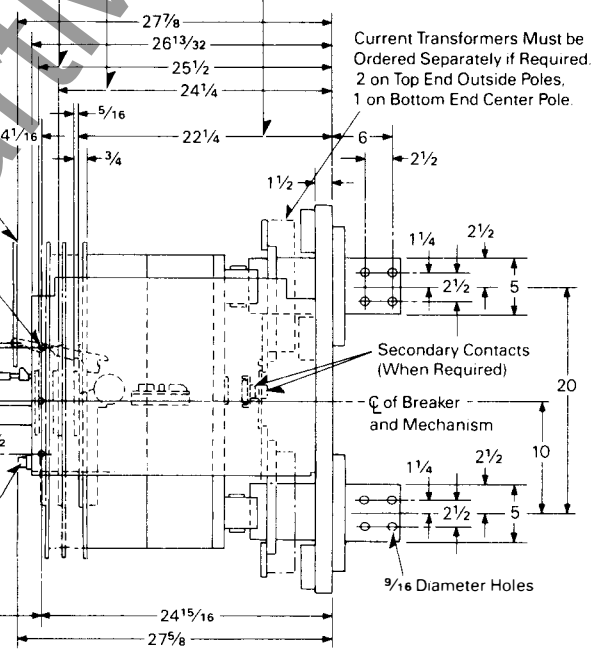
Drawout Mounting Breakers

Frame Rating
4000 Amp - SPB100



Door Cutout and Assembly of Position Indicating Escutcheon

Disconnected Position (Main and Secondary Contacts Open)
Test Position (Main Contacts Open and Secondary Contacts Closed)
Connected Position (Main and Secondary Contacts Closed)

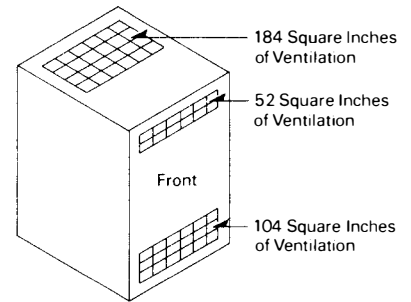


3/8 Diameter (3) Holes on Each Side Plate For Use to Support Drawout Frame to Enclosure

Notes:
Suitable for Continuous Operation at 80% of Frame Rating in an Enclosure Without Ventilation.

Suitable for Continuous Operation at 100% of Frame Rating if Used in a Minimum Enclosure 45" High X 31 1/2" Wide X 36" Deep With Minimum Ventilation of 156 Square Inches in Either the Front or Side of The Enclosure and 184 Square Inches in The Top of The Enclosure.

Caution: To Prevent Over-Heating When Cable Connected Use Copper Cables Only.



Reproduced From Drawing 1368D98



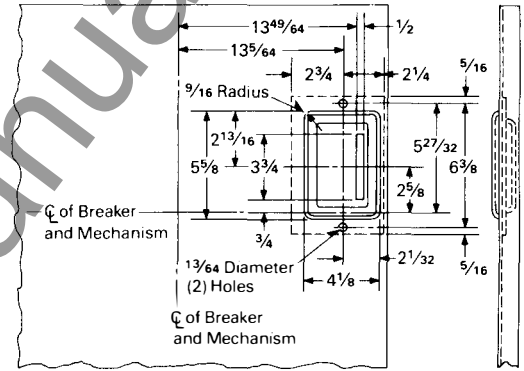
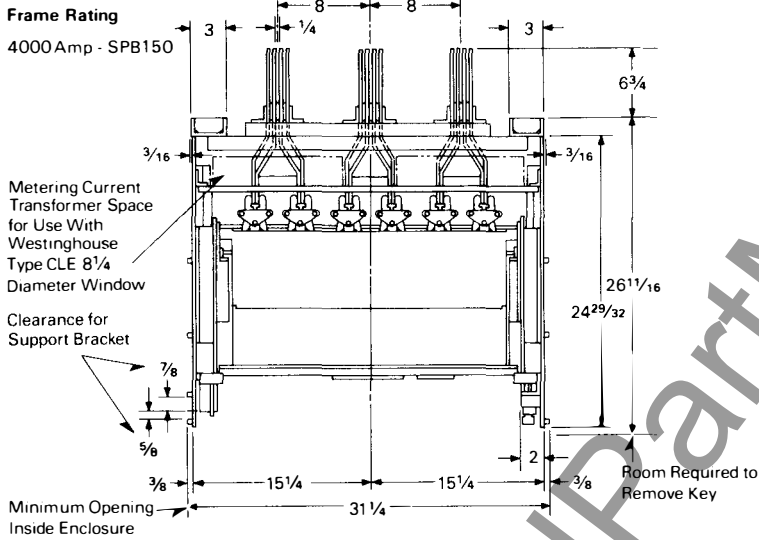
June, 1983
Supersedes Dimension Sheet 29-870,
pages 17-18, dated January, 1982
Mailed to: E, D, C/1901, 2807/DS

Page 17: SPB-150 (4000 Amp) Drawout
Mounting Breakers

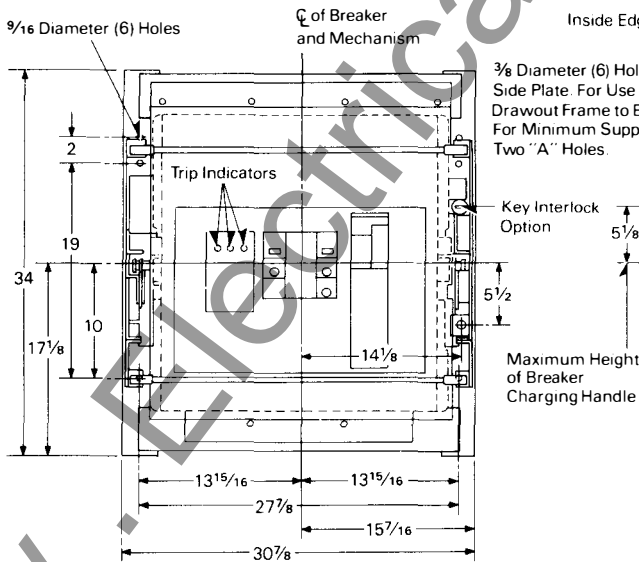
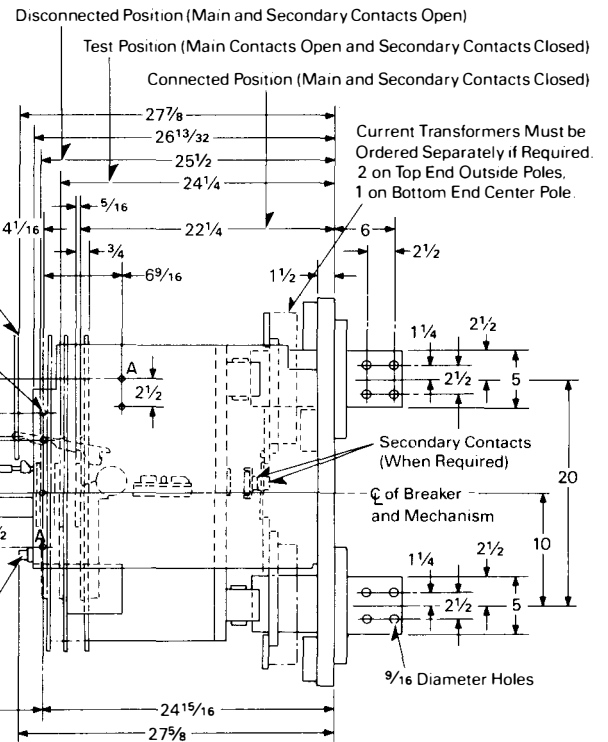
Page 18: Neutral Current Transformers for
SPB Circuit Breakers With Ground Fault Trip
(Residual Scheme)

Systems Power Breakers

Drawout Mounting Breakers



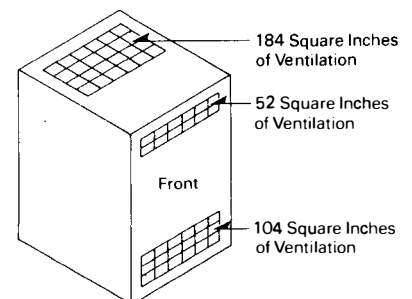
Door Cutout and Assembly of Position Indicating Escutcheon



Notes:
Suitable for Continuous Operation at 80% of Frame Rating in an Enclosure Without Ventilation.

Suitable for Continuous Operation at 100% of Frame Rating if Used in a Minimum Enclosure 45" High X 31 1/2" Wide X 36" Deep With Minimum Ventilation of 156 Square Inches in Either the Front or Side of The Enclosure and 184 Square Inches in The Top of The Enclosure.

Caution: To Prevent Over-Heating When Cable Connected Use Copper Cables Only.

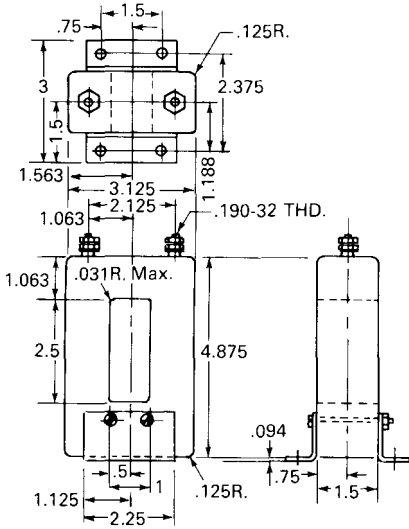


Enclosure Showing Ventilation



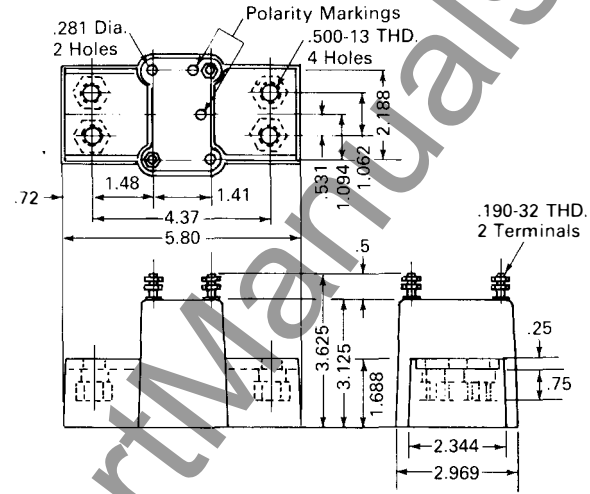
Neutral Current Transformers for SPB Breakers With Ground Fault Trip (Residual Scheme)

Breaker Frame Rating: 250 Amps



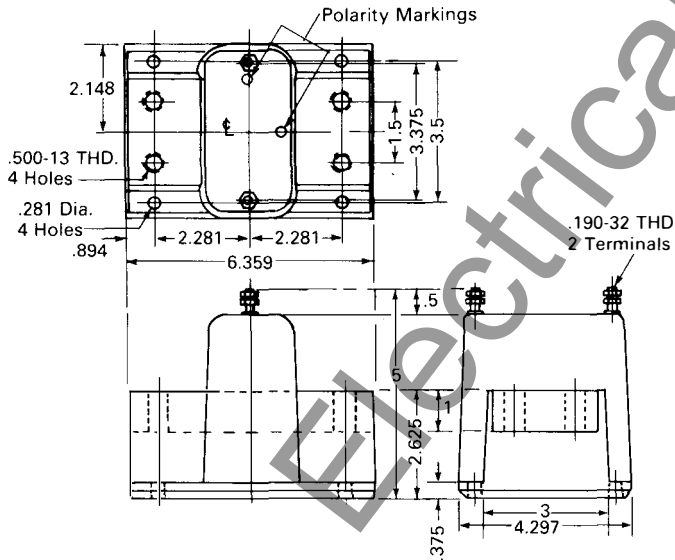
Reproduced from Drawing 1292C95

Breaker Frame Ratings: 800, 1200, 1600, 2000 Amp Compact



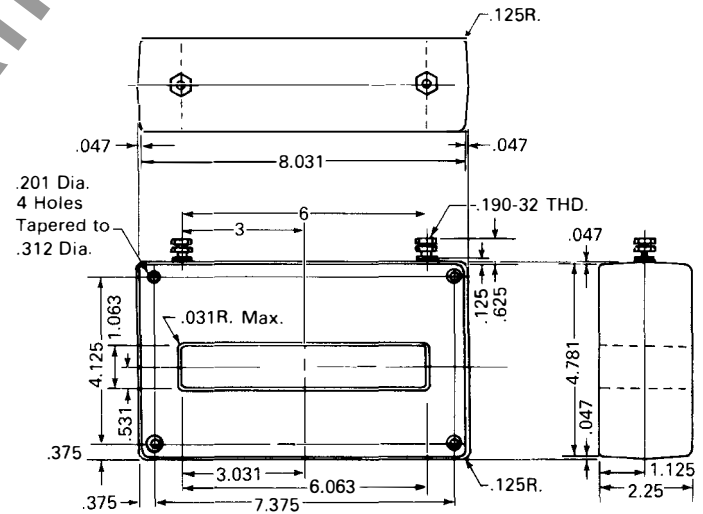
Reproduced from Drawing 1265C89

Breaker Frame Ratings: 2000 (Std. 22 inch Frame), 2500, 3000 Amps



Reproduced from Drawing 1265C90

Breaker Frame Ratings: 4000, 5000 Amps



Reproduced from Drawing 1292C96

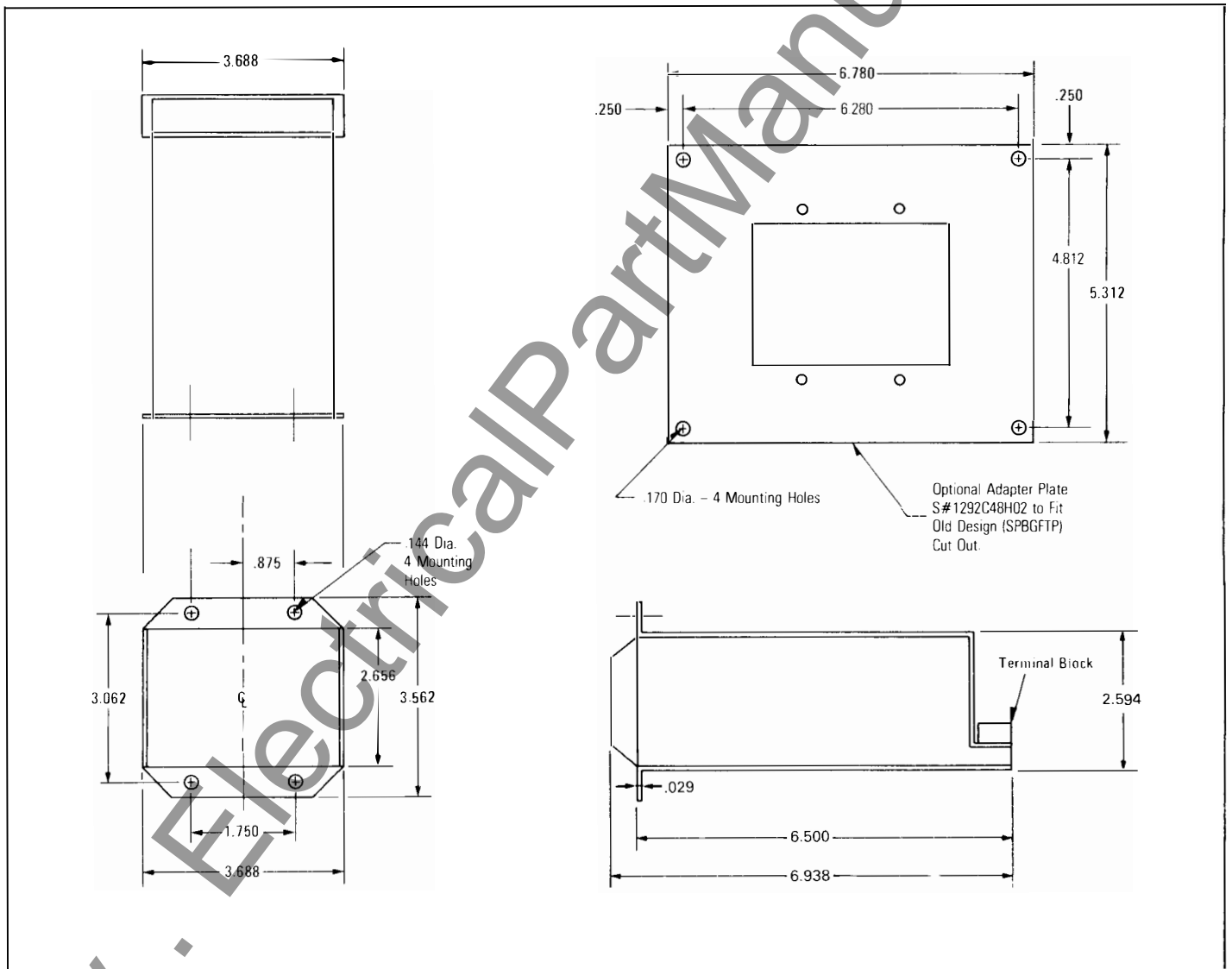


April, 1985
New Information
Mailed to: E, D, C/29-800A

Ground Fault Test Panel

Systems Pow-R Breakers

Ground Fault Test Panel SPBGFTP





www.ElectricalPartManuals.com