



low-voltage
power
circuit
breakers

DB De-ion® circuit breakers
15-4000 amperes, a-c or d-c

dimension
section

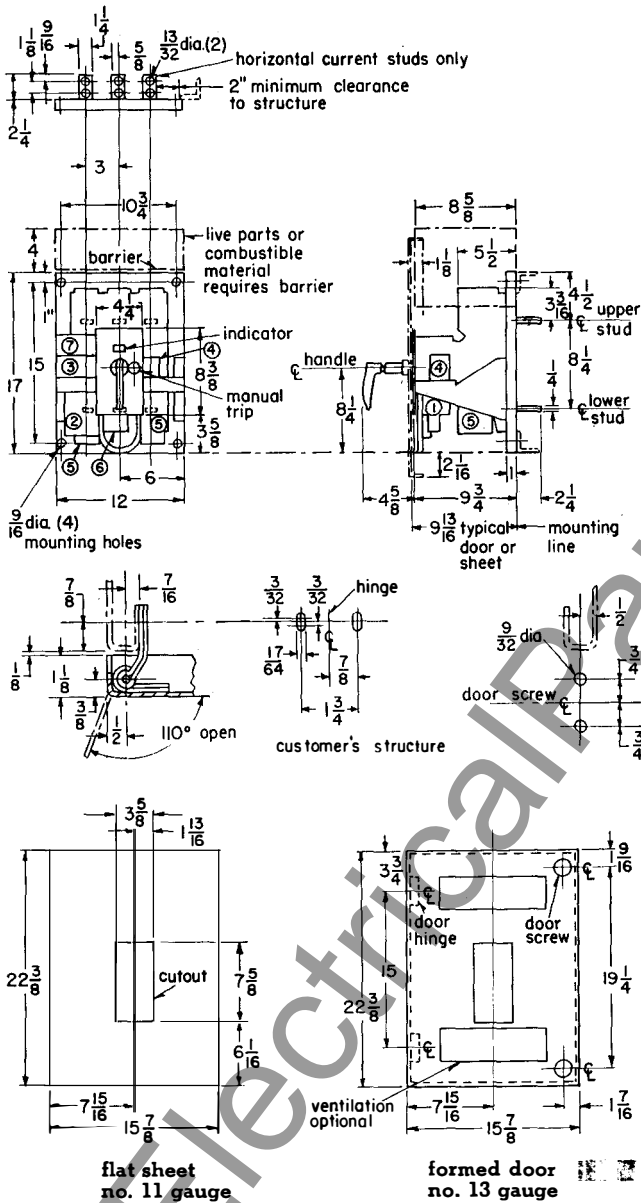
33-870

manually or electrically operated • 2 or 3 pole
15,000 to 100,000 amp interrupting capacity

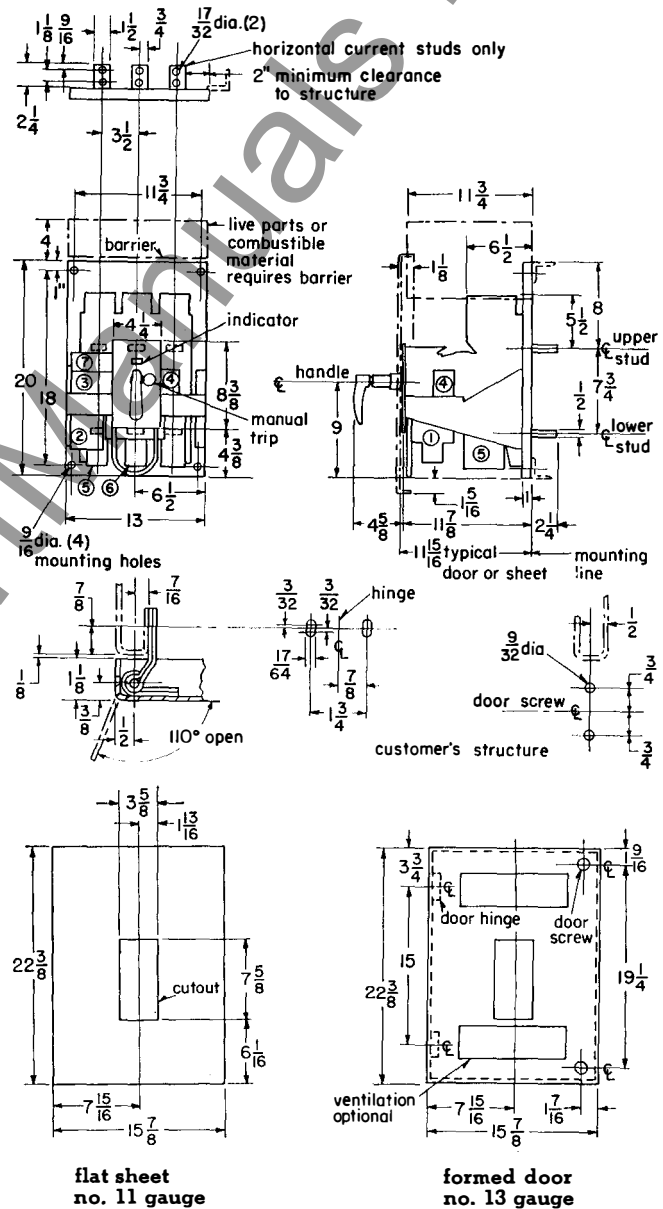
page 1

standard electrically operated breakers

type DB-15



type DB-25



breaker includes:

- ① closing solenoid
- ② control relay
- ③ auxiliary switch
- ④ shunt trip
- ⑤ overcurrent trip
- ⑥ reverse current trip
- ⑦ terminal block

provision for padlocking breaker in tripped position
pole arrangement: three pole, as shown; two pole, center pole omitted
operating handle: electric close, manual trip

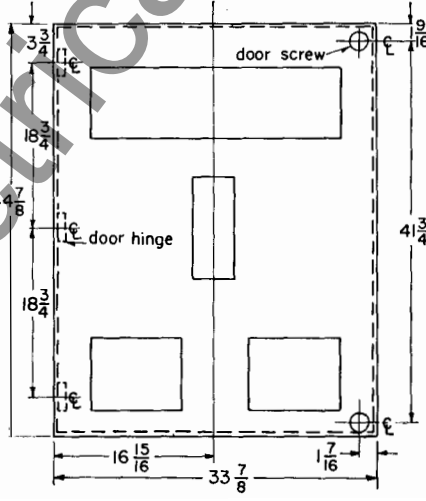
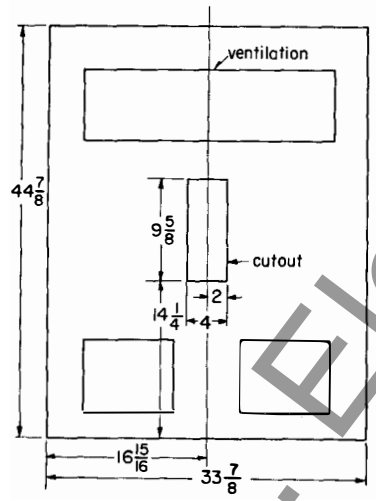
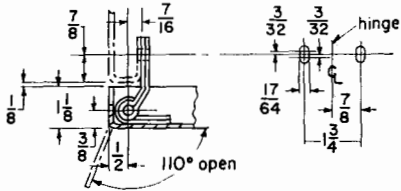
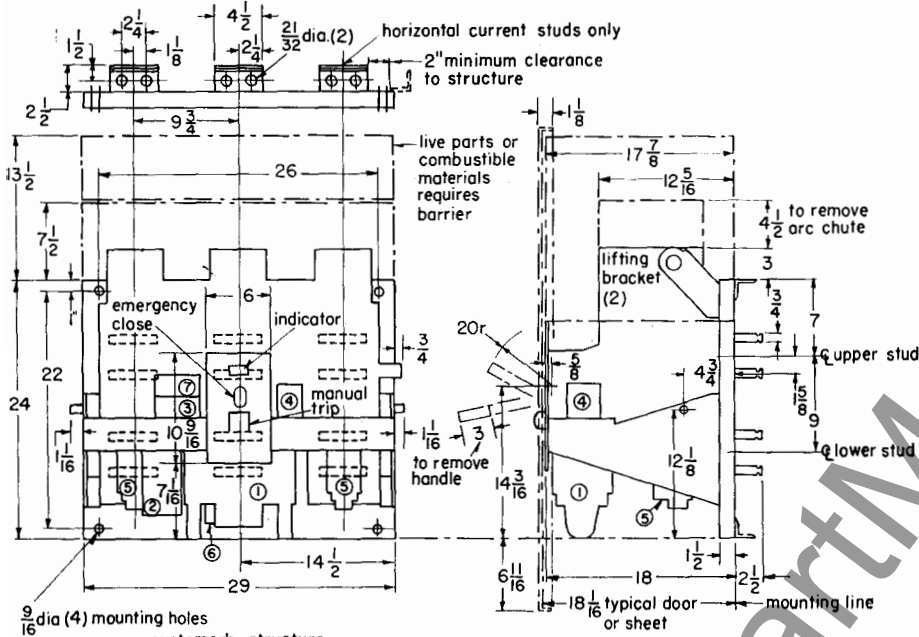
April, 1961

new information
mailed to: E/283/DS; D/812/DB; C/336/DB



standard electrically operated breakers • continued

type DB-100



- breaker includes:**
- ① closing solenoid
 - ② control relay
 - ③ auxiliary switch
 - ④ shunt trip
 - ⑤ overcurrent trip
 - ⑥ reverse current trip
 - ⑦ terminal block

provision for padlocking breaker in tripped position
 pole arrangement: three pole, as shown; two pole, center pole omitted
 operating handle: electric close, manual trip

DB De-ion circuit breakers

15-4000 amperes, a-c or d-c

dimension section

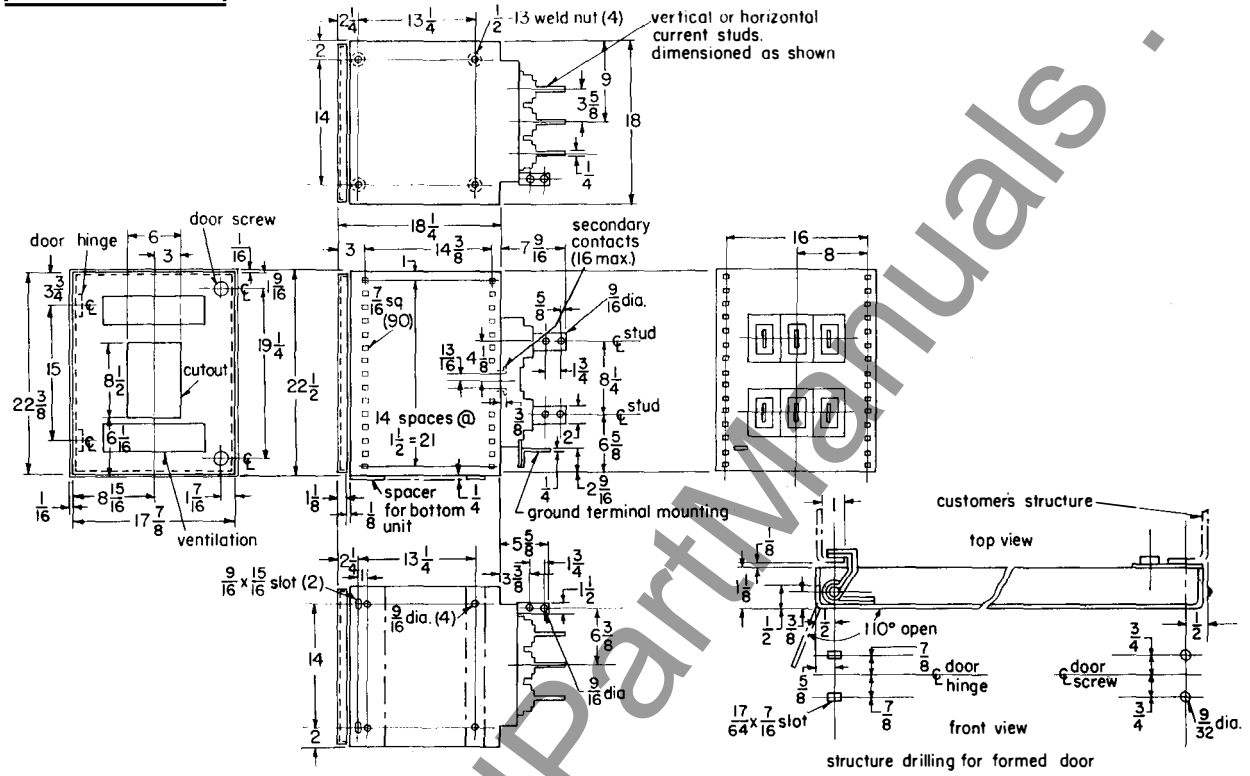
33-870

manually or electrically operated • 2 or 3 pole
15,000 to 100,000 amp interrupting capacity

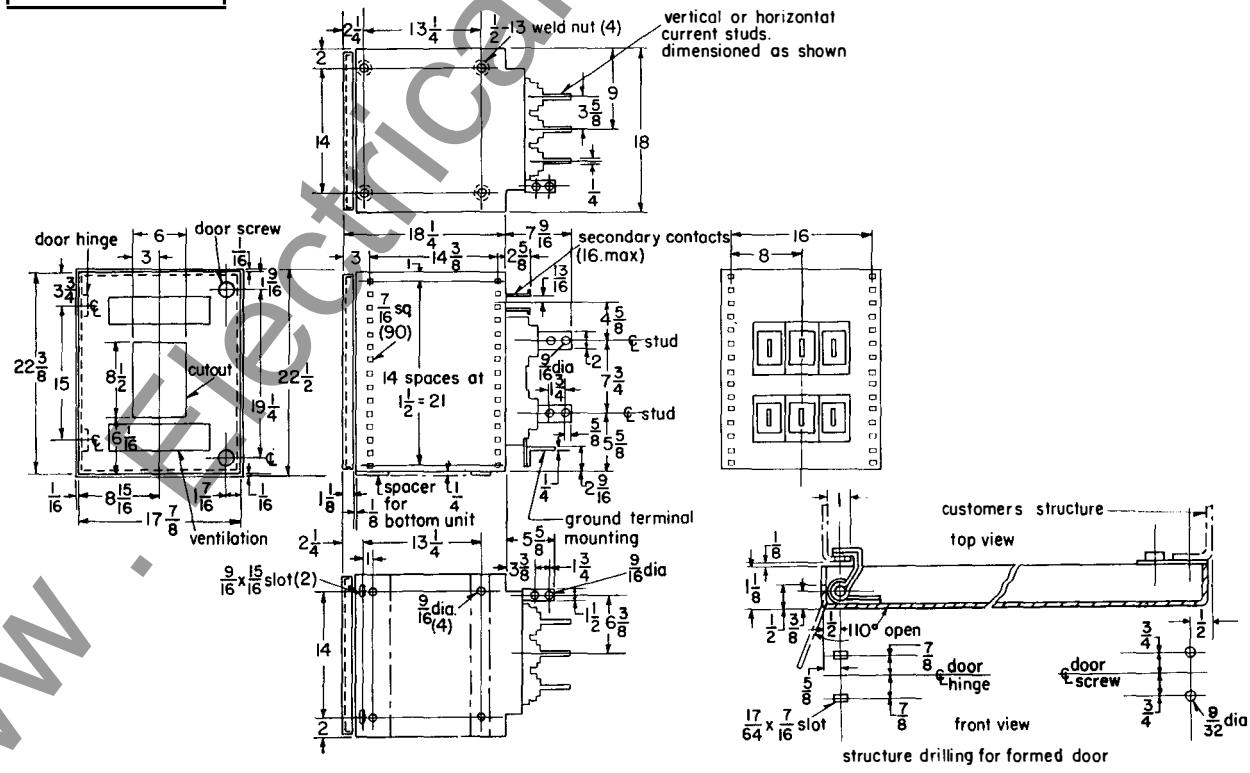
page 5

standard individual, or stack-up unit for 3 position, drawout breakers

type DB-15



type DB-25

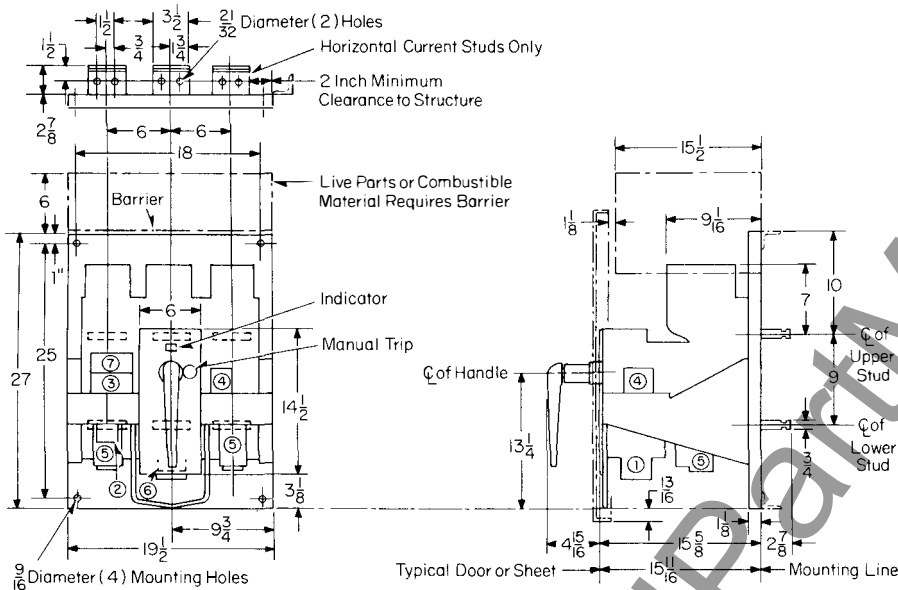


Westinghouse

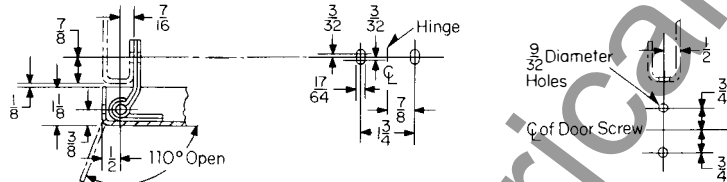


Standard Electrically Operated Breakers Continued
(Dimensions in Inches Approx.)

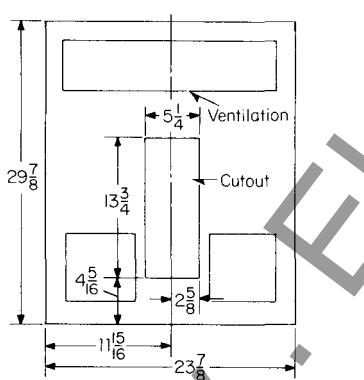
Type DB-50



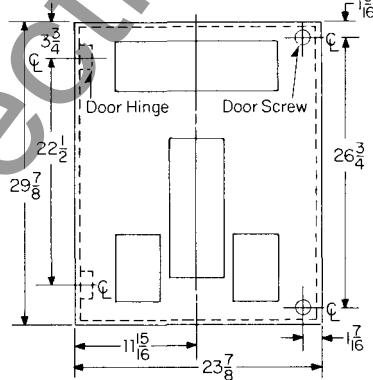
Customer's Structure



Flat Sheet Number 11 Gauge



Formed Door Number 13 Gauge



Breaker Includes:

- ① Closing Solenoid or Manual Close Spring
- ② Control Relay
- ③ Auxiliary Switch
- ④ Shunt Trip
- ⑤ Overcurrent Trip
- ⑥ Reverse Current Trip
- ⑦ Terminal Block

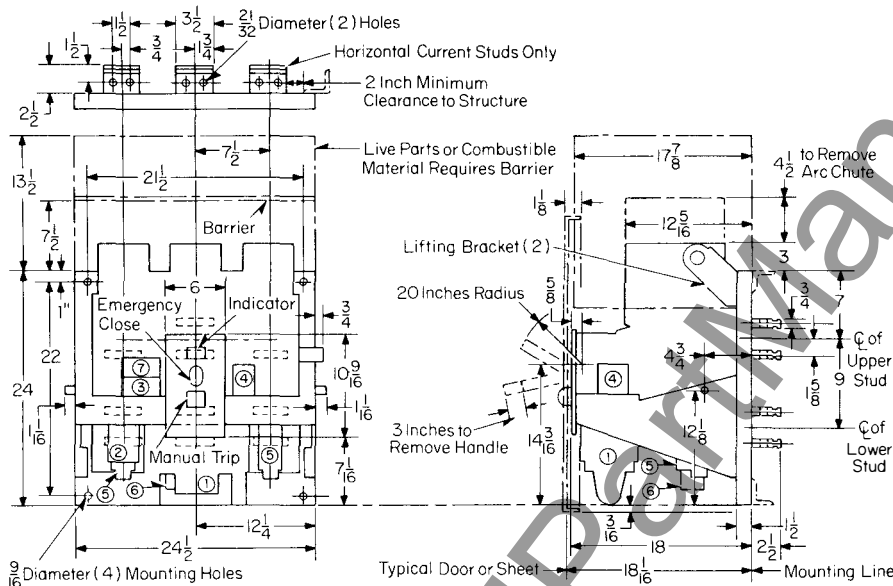
Provision for Padlocking Breaker in Tripped Position.
Pole Arrangement: Three Pole, as Shown; Two Pole, Center Pole Omitted.
Operating Handle: Electric Close, Manual Trip

DB De-ion Circuit Breakers 15-4000 Amperes, Ac or Dc

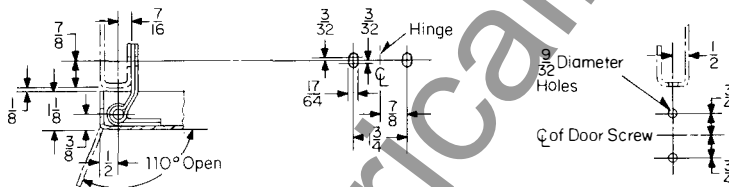
Manually or Electrically Operated
2 or 3 Pole, 15,000 to 100,000 Amp
Interrupting Capacity

Standard Electrically Operated Breakers Continued (Dimensions in Inches Approx.)

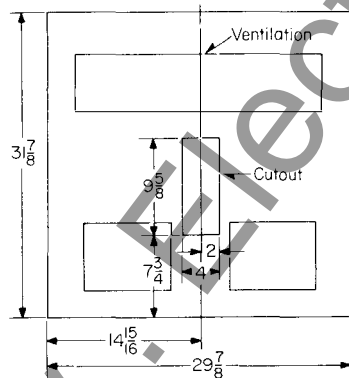
Type DB-75



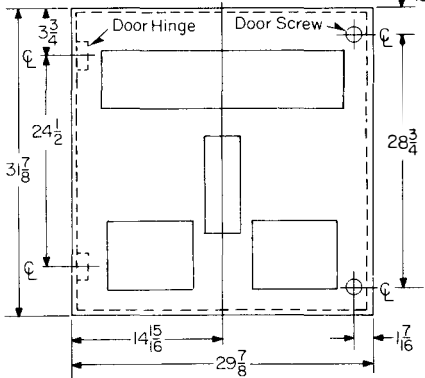
Customer's Structure



Flat Sheet Number 11 Gauge



Formed Door Number 13 Gauge



Breaker Includes:

- ① Closing Solenoid
- ② Control Relay
- ③ Auxiliary Switch
- ④ Shunt Trip
- ⑤ Overcurrent Trip
- ⑥ Reverse Current Trip
- ⑦ Terminal Block

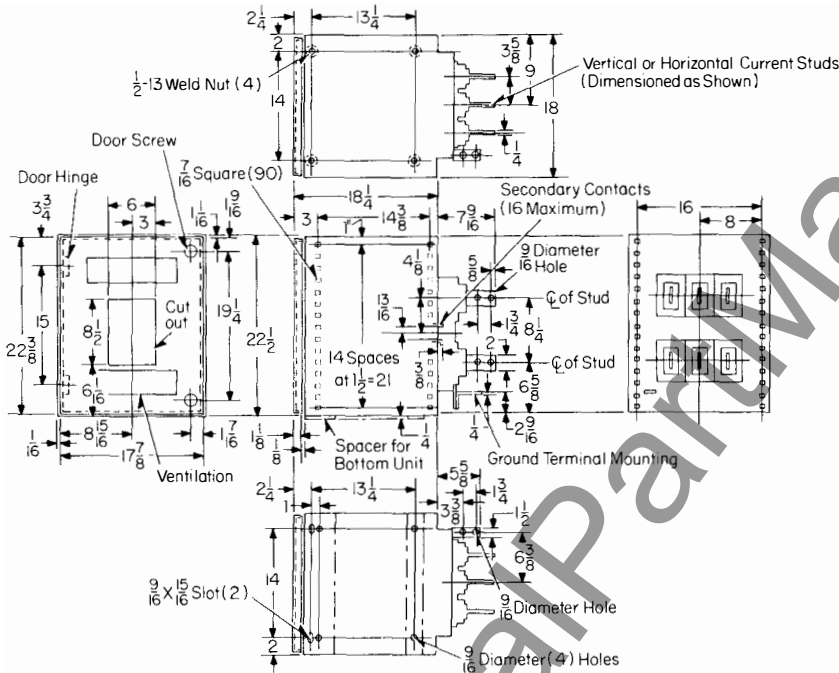
Provision for Padlocking Breaker in Tripped Position.
Pole Arrangement: Three Pole, as Shown; Two Pole, Center Pole Omitted.
Operating Handle: Electric Close, Manual Trip

DB De-ion Circuit Breakers 15-4000 Amperes, Ac or Dc

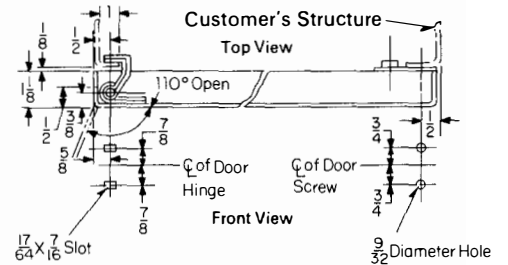
Manually or Electrically Operated
2 or 3 Pole, 15,000 to 100,000 Amp
Interrupting Capacity

Standard Individual, or Stack-up Unit for 3 Position, Drawout Breakers (Dimensions in Inches Approx.)

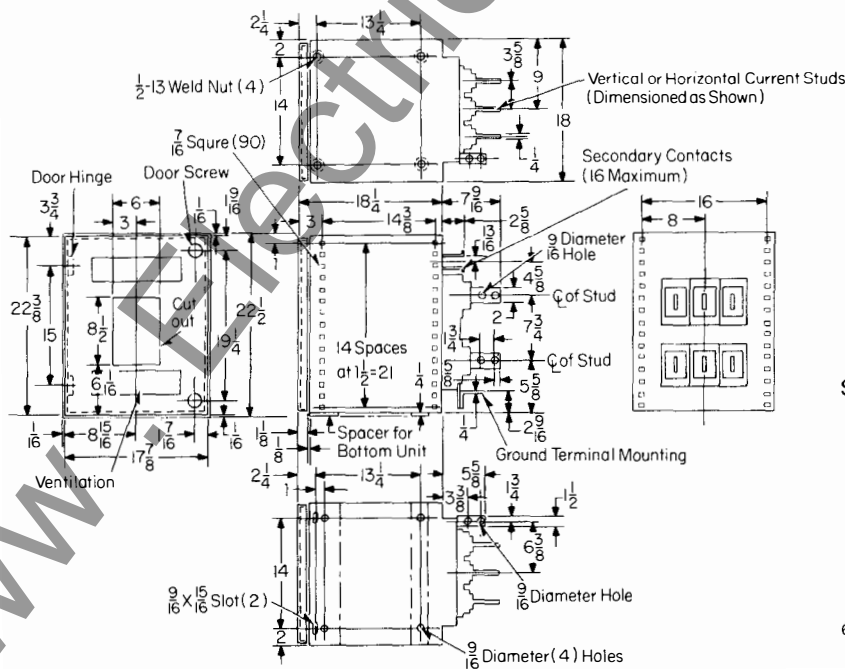
Type DB-15



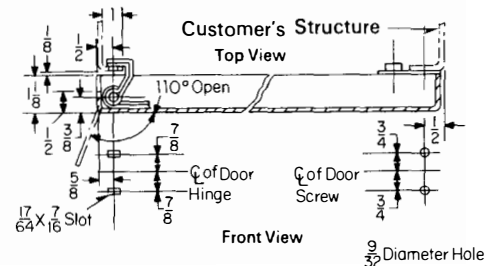
Structure Drilling for Formed Door



Type DB-25



Structure Drilling for Formed Door

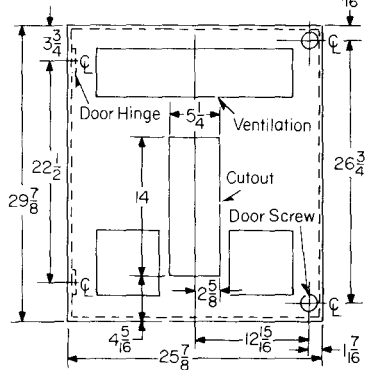
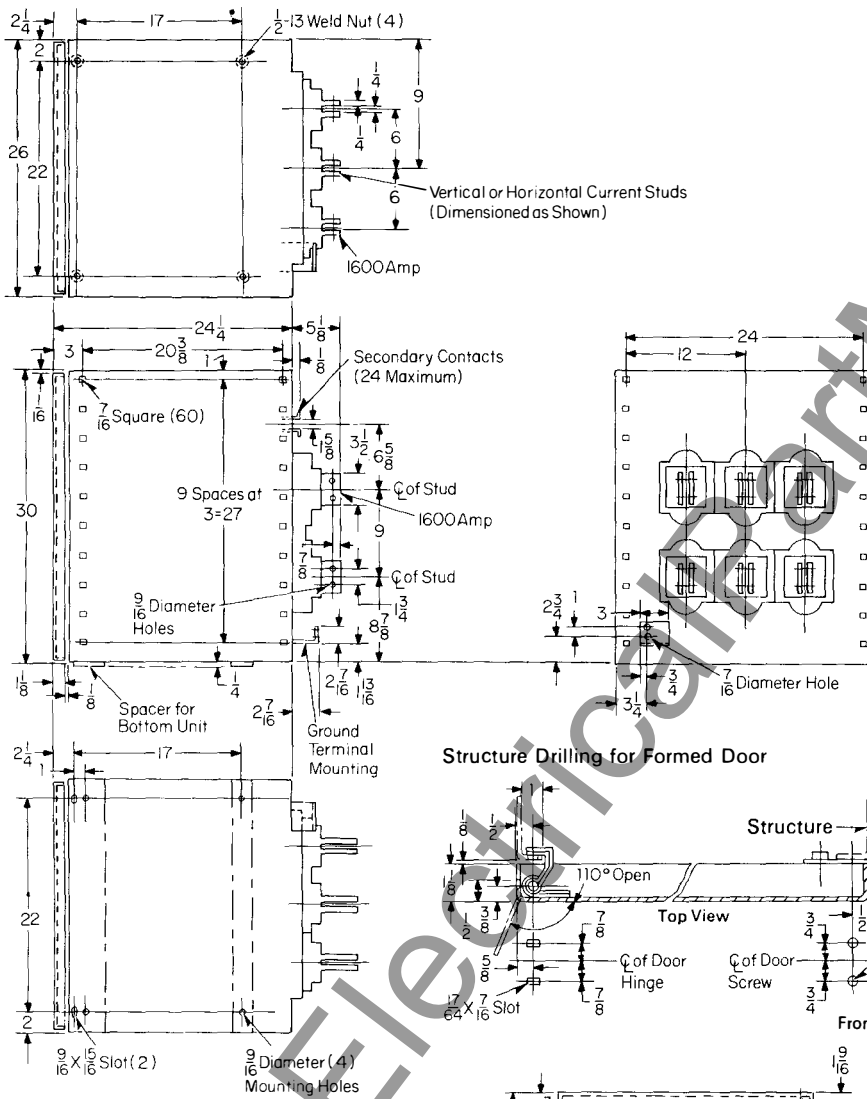


Westinghouse



Standard Individual, or Stack-up Unit for 3 Position, Drawout Breakers Continued
(Dimensions in Inches Approx.)

Type DB-50



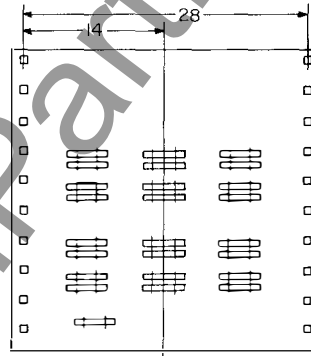
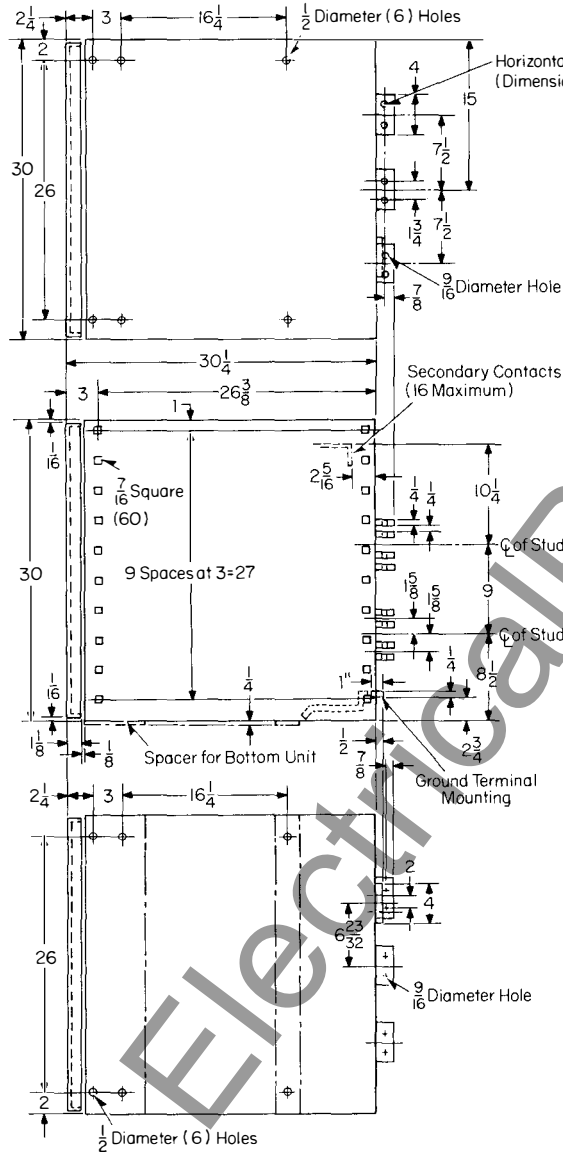
WWW.ELECTRICALMANUALS.COM

DB De-ion Circuit Breakers 15-4000 Amperes, Ac or Dc

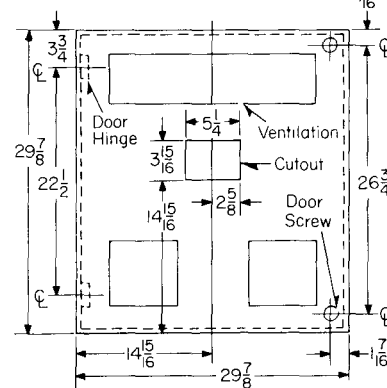
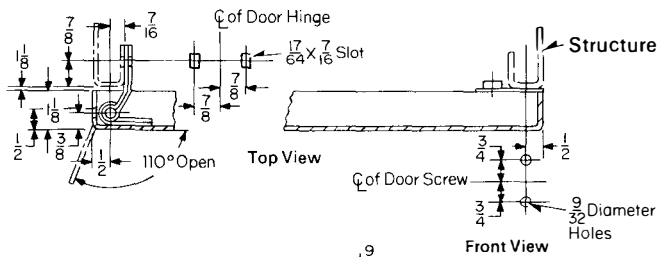
Manually or Electrically Operated
2 or 3 Pole, 15,000 to 100,000 Amp
Interrupting Capacity

Standard Individual, or Stack-up Unit for 3 Position, Drawout Breakers Continued (Dimensions in Inches Approx.)

Type DB-75



Structure Drilling for Formed Door



www.enr.com

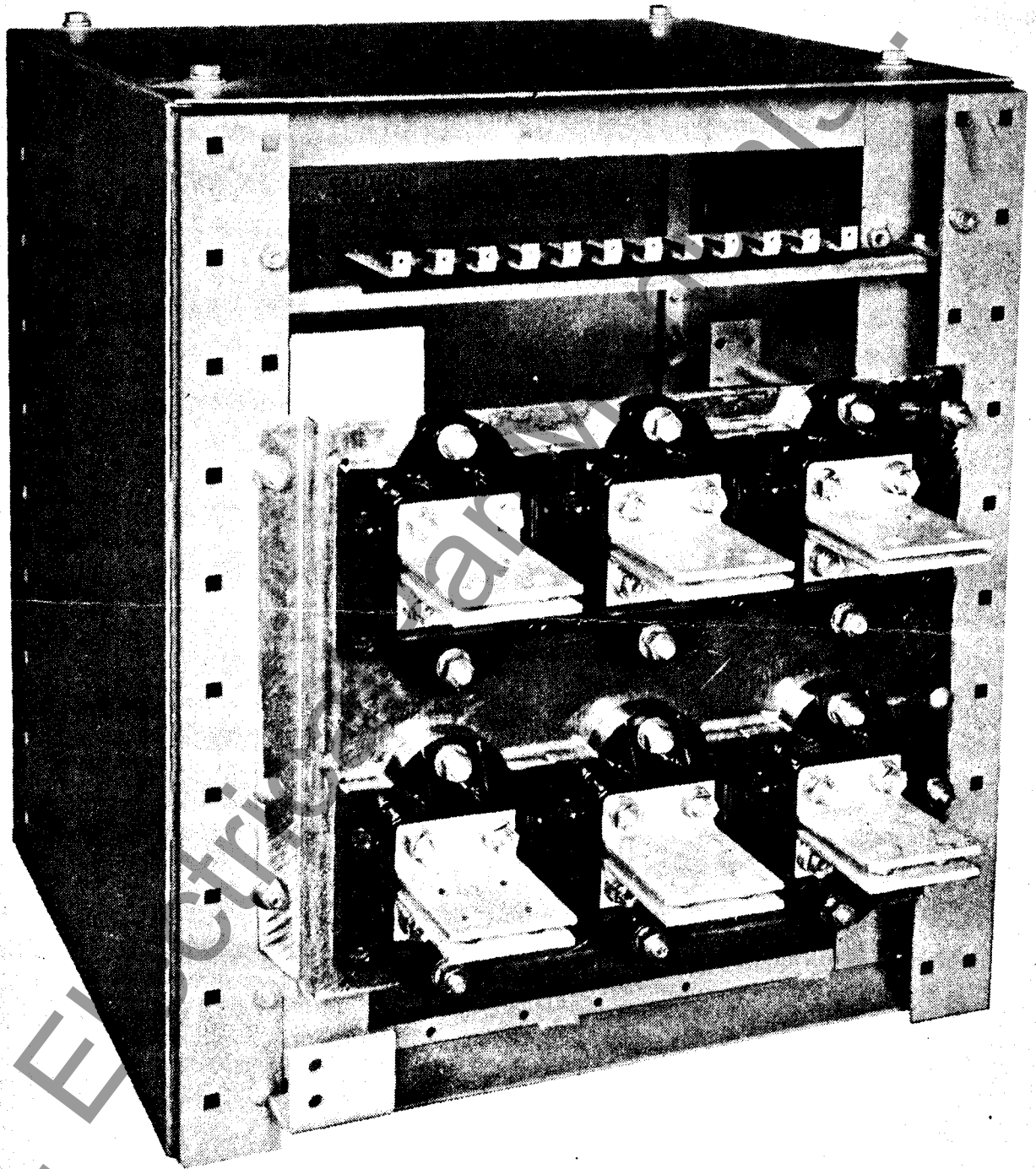


Photo #3

www.enr.com