

CHANGE[®]

**ANCHOR
TOOL**

MAINTENANCE

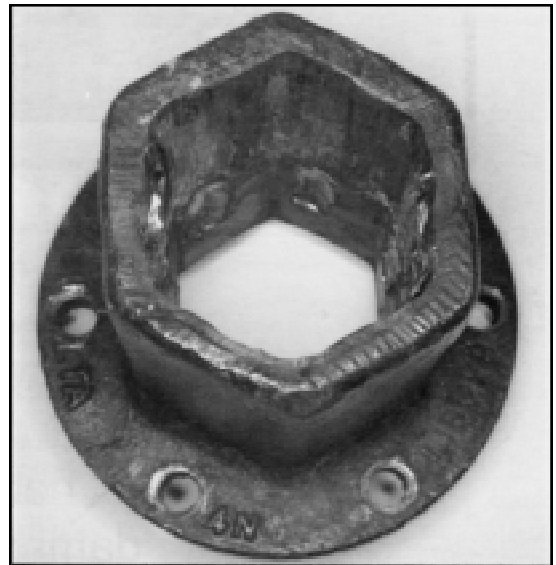
How to detect
and
help prevent
damage to tooling.

KELLY BAR ADAPTER



Elongation of Kelly bar holes.

- Cause**
- The retaining pin carrying torque due to a worn Kelly bar or a worn or improperly sized Kelly bar adapter socket.
- Action:**
- Replace the Kelly bar adapter. Make sure the new adapter is the proper size for Kelly bar.
 - Replace worn Kelly bar.

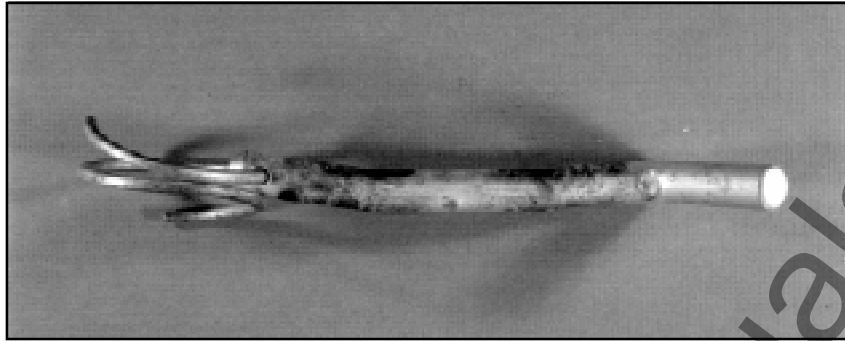


Wear

- Cause:**
- Piloted Kelly bars.
 - Applied torque in excess of rating.
 - Worn Kelly bars.
 - Normal usage over long period of time or in obstruction-laden soils.
 - Side loading or tool misalignment during anchor installation.
- Action:**
- Replace the Kelly bar adapter. Chance now sells only heavy duty Kelly bar adapters which last longer with piloted Kelly bars.
 - Avoid misalignment during anchor installation.
 - Replace worn Kelly bar.

Kelly Bar Adapter continued . . .

KELLY BAR ADAPTER



Retaining pins & coil locks

- Cause:**
- Normal usage over long period of time.
 - Worn Kelly bar or worn or improperly sized Kelly bar adapter or installing tool socket.
 - Use of wrong size retaining pin.
- Action:**
- Replace with proper size retaining pin and coil lock.
 - Replace worn Kelly bar or Kelly bar adapter or installing tool.

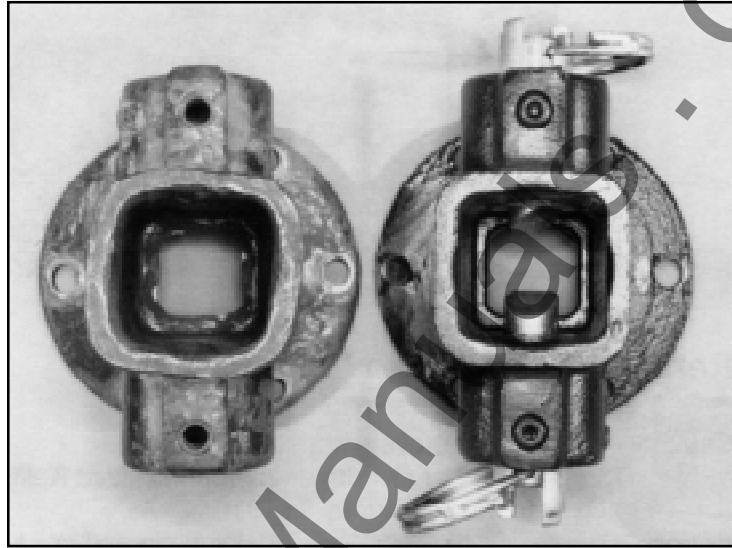


Elongation of flange bolt holes

- Cause:**
- Applied torque in excess of rating.
 - Failure to maintain proper bolt tightening torques.
- Action:**
- Replace the Kelly bar adapter.
 - Do not exceed tool's torque rating.
 - Keep bolts tightened to recommended torque.

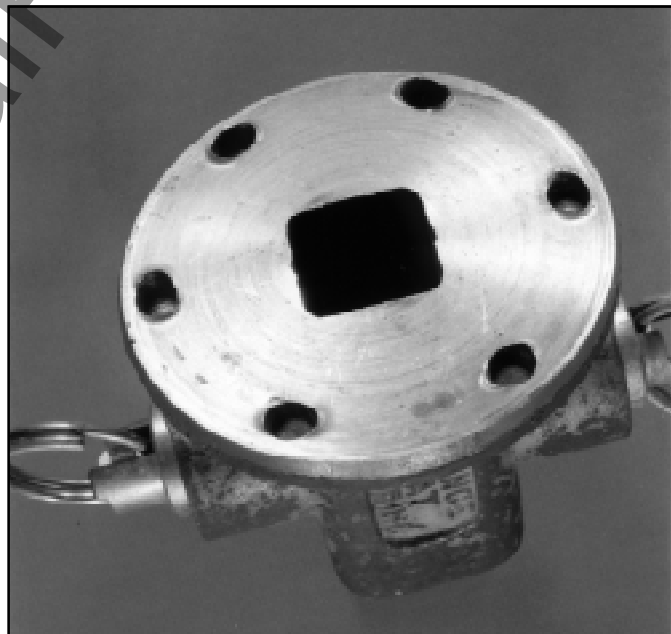
LOCKING DOG ASSEMBLY

Square Socket Wear



- Cause**
- Normal usage over long time.
 - Applied torque in excess of rating.
 - Side loading or tool misalignment during anchor installation.
- Action:**
- Replace locking dog assembly (may also be necessary to replace drive tube).
 - Do not exceed tool's torque rating.
 - Maintain proper alignment during anchor installation.

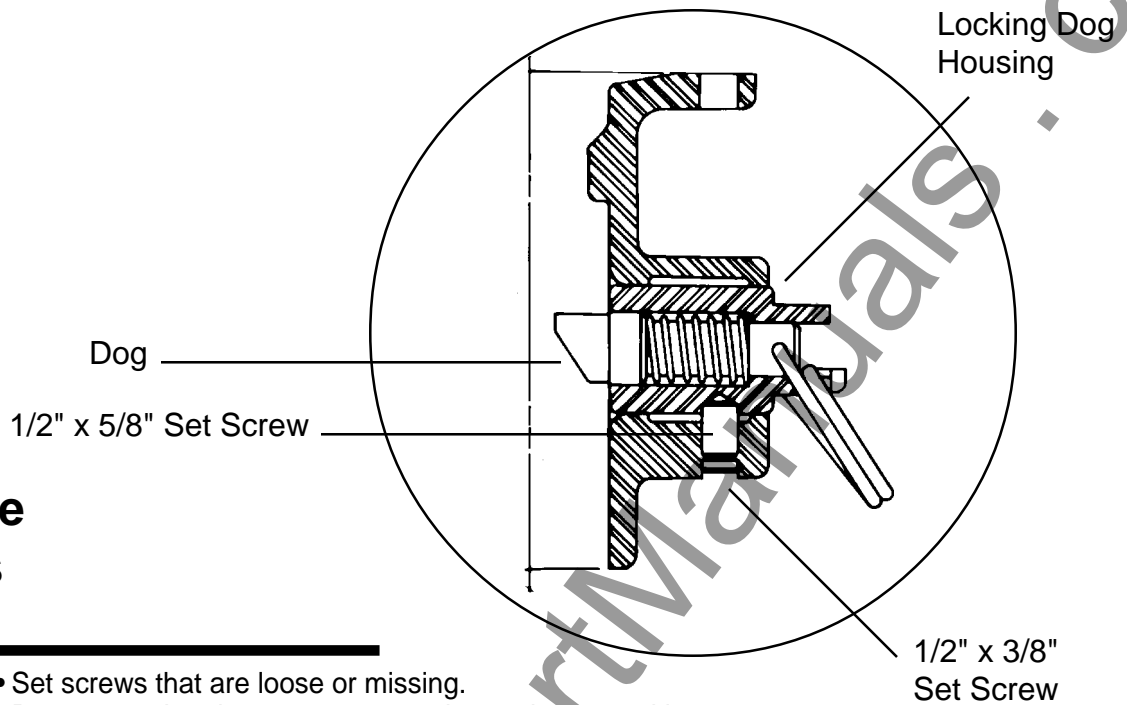
Elongation of Flange Bolt Holes



- Cause:**
- Applied torque in excess of rating.
 - Failure to maintain proper bolt tightening torques.
- Action:**
- Replace the locking dog assembly.
 - Do not exceed tool's torque rating.
 - Keep bolts tightened to recommended torque.

Locking Dog Assembly continued . . .

LOCKING DOG ASSEMBLY

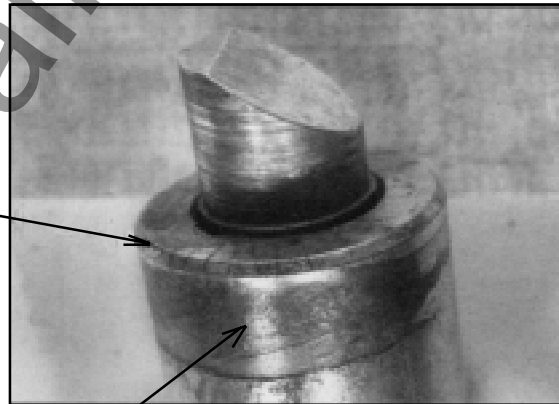


Loose Dogs

- Cause**
- Set screws that are loose or missing.
- Action:**
- Remove and replace set screws using replacement kit.

Worn/Cracked Dogs or Dog Housings

CRACKS



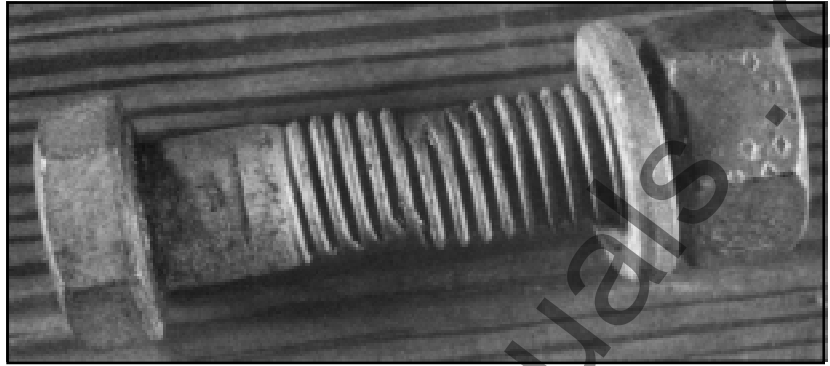
WEAR

- Cause**
- Worn locking dog assembly socket.
 - Drive tube wear.
- Effect:**
- Dog assemblies share torsional load.
- Action:**
- Inspect locking dog adapter and wrench tube and replace as necessary.
 - If locking dog adapter is ok, replace dog assemblies using replacement kit in catalog.

Locking Dog Assembly continued . . .

LOCKING DOG ASSEMBLY

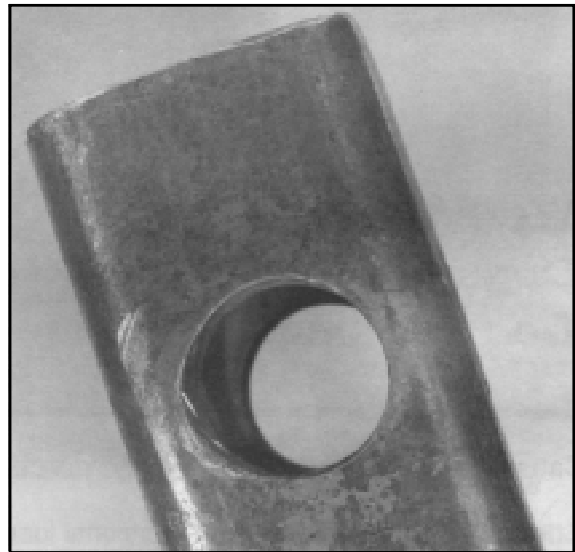
Flange Bolts



-
- Cause**
- Wrong grade bolts.
 - Applied torque in excess of rating.
 - Failure to maintain proper bolt tightening torques.
- Action:**
- Replace with proper size and grade bolts.
 - Do not exceed tool's torque rating.
 - Keep bolts tightened to recommended torque.

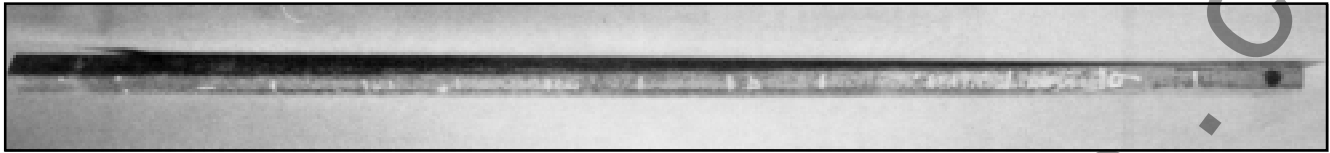
DRIVE TUBE

Elongation of Drive Tube Holes



-
- Cause:**
- Worn locking dog assembly socket.
 - Worn drive tube.
- Action:**
- Replace drive tube.
 - Check locking dog assembly - replace if worn.

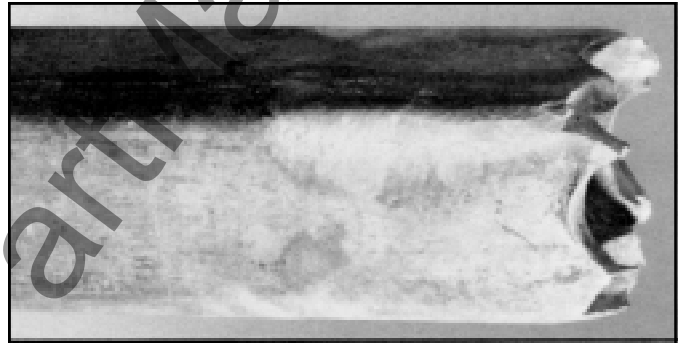
DRIVE TUBE



Twist

- Cause:**
- Torque in excess of rating.
- Action:**
- Replace drive tube.
 - Do not exceed tube's torque rating.

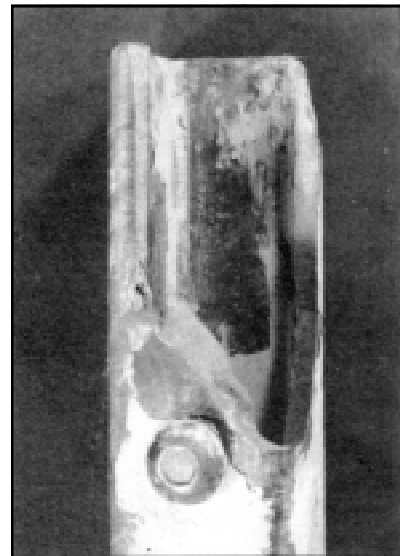
Dog End of Tube Twisted Off



- Cause**
- Extremely worn locking dog adapter.
 - Insufficient engagement of tube in locking dog adapter.
- Action:**
- Replace drive tube.
 - Check locking dog assembly - replace if worn.
 - Be sure tube is captured in locking dog adapter by dogs before using.

Split or Broken Drive End

- Cause**
- Torque in excess of rating.
 - Inadequate engagement of anchor in tube.
- Action:**
- Replace drive tube.
 - Do not exceed tube's torque rating.
 - Maintain full engagement with anchor at all times.





POWER SYSTEMS, INC.

CHANCE

210 N. Allen St.
Centralia, MO 65240
Phone 573-682-5521
Fax 573-682-8714



POWER SYSTEMS, INC.

The companies of Hubbell Power Systems

Anderson Connectors and Tools
Chance Construction, Switching and Protection Products & Tools
Fargo Fittings and Accessories
Hipotronics Test Equipment
Ohio Brass Insulators and Arresters

NOTE: Because Hubbell has a policy of continuous product improvement, we reserve the right to change design and specifications without notice.

© 2000 Hubbell

Printed in USA

Bulletin 04-9403AT Rev. A

500 RGS 3/97