



DESIGN N *Life-Line* CONTACTOR

SIZES 3 & 4—2,3,4 & 5 POLES A-C

CAT. NO.
COIL S#

STYLE NO.
V. CY.

WITHOUT ELECTRICAL INTERLOCKS

MAINTENANCE

1. Keep the De-ion arc box in place at all times that the contactor is in operation. Remove when necessary for inspection of the contacts by removing two screws. Replace with care, seating the arc box in the recess provided for it in the base.

2. Do not lubricate the bearings, contacts or any other parts.

3. Do not dress the contacts unless unusually severe pitting occurs. The surfaces are of silver and discoloration is not harmful. Replace the contacts when the silver faces become reduced to about 1/32 inch in thickness.

4. Do not file or dress connectors or other current-carrying parts lest the protective plating be removed. Surface discoloration is not harmful.

5. To remove the operating coil first disconnect the leads, then remove the three magnetscrews and lift the magnet and coil clear. The coil will then slide freely from the magnet.

Mount the new coil with its terminals toward the front and to the left. Reassemble the parts, making sure that the three magnet screws are tightened *as far as they will go*.

ELECTRICAL INTERLOCK

As many as four electrical interlocks may be obtained for mounting on the contactor.

Order by style number as follows:

S# 1490460 for 1st or 2nd electrical interlock

S# 1490456 for 3rd or 4th electrical interlock

Both interlocks provide normally-open or normally-closed operation. Mounting hardware and instructions are included.

PRINCIPAL RENEWAL PARTS

NAME OF PART	STYLE NUMBER	
	Size 3	Size 4
Coil (S# marked on coil)	1490 469	1490 469
Arc Box (2 pole).....	1490 468	1490 468
Arc Box (3 Pole).....	1600 430	1600 430
Arc Box (4 Pole).....	1600 429	1600 429
Arc Box (5 Pole).....	1625 561	1625 562†
Contact Kit (2 Pole).....	1625 563	1625 564†

† Stamped with numeral "4".

TABLE OF RATINGS

SIZE NO.	NO. OF POLES	MAXIMUM AMPERE RATINGS		MAXIMUM HORSEPOWER RATINGS					
				Volts—Single Phase			Volts—Polyphase		
		Open	Enclosed	115	230	440-600	110	208-220	440-600
3	2	100	90	7½	15	25
3	3	100	90	7½	15	25	15	30	50
3	4	100	90	15	30	50
3	5	100	90	15	30	50
4	2	150	135
4	3	150	135	25	50	100
4	4	150	135	25	50	100
4	5	150	135	25	50	100

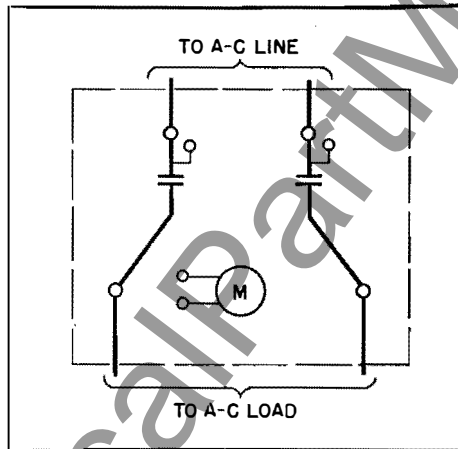


FIG. 1. Wiring Diagram for Two-Pole Contactor (Front View)

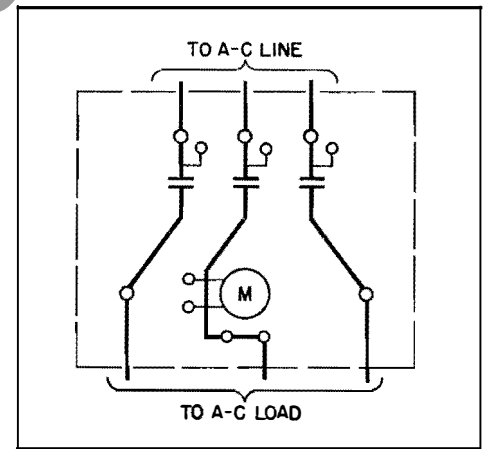


FIG. 2. Wiring Diagram for Three-Pole Contactor (Front View)

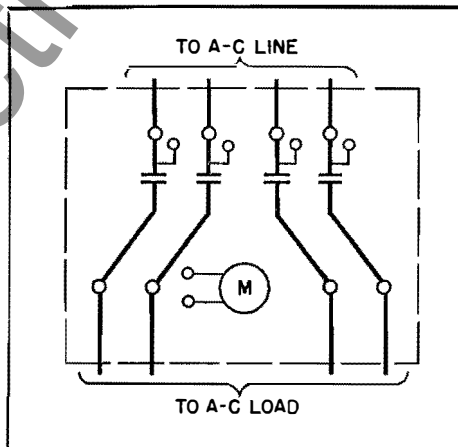


FIG. 3. Wiring Diagram for Four-Pole Contactor (Front View)

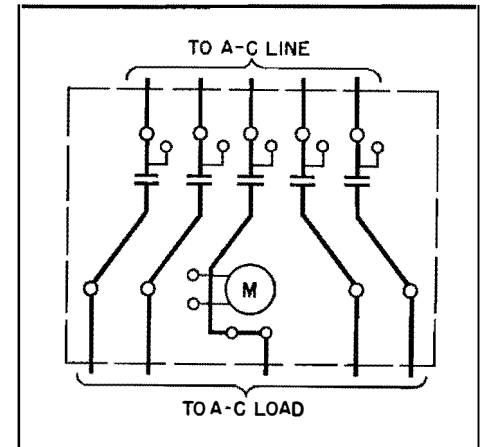


FIG. 4. Wiring Diagram for Five-Pole Contactor (Front View)

WESTINGHOUSE ELECTRIC CORPORATION

STANDARD CONTROL DIVISION

BEAVER, PA.



DESIGN N *Life-Line* CONTACTOR

SIZES 3 & 4—2,3,4 & 5 POLES A-C

CAT. NO.

STYLE NO.

COIL S#

V. CY.

WITHOUT ELECTRICAL INTERLOCKS

MAINTENANCE

1. Keep the De-ion arc box in place at all times that the contactor is in operation. Remove when necessary for inspection of the contacts by removing two screws. Replace with care, seating the arc box in the recess provided for it in the base.

2. Do not lubricate the bearings, contacts or any other parts.

3. Do not dress the contacts unless unusually severe pitting occurs. The surfaces are of silver and discoloration is not harmful. Replace the contacts when the silver faces become reduced to about 1/32 inch in thickness.

4. Do not file or dress connectors or other current-carrying parts lest the protective plating be removed. Surface discoloration is not harmful.

5. To remove the operating coil first disconnect the leads, then remove the three magnet screws and lift the magnet and coil clear. coil will then slide freely from the magnet.

Mount the new coil with its terminals toward the front and to the left. Reassemble the parts, making sure that the three magnet screws are tightened as far as they will go.

ELECTRICAL INTERLOCK

As many as four electrical interlocks may be obtained for mounting on the contactor.

Order by style number as follows:

S# 1490460 for 1st or 2nd electrical interlock

S# 1490456 for 3rd or 4th electrical interlock

Both interlocks provide normally-open or normally-closed operation. Mounting hardware and instructions are included.

PRINCIPAL RENEWAL PARTS

NAME OF PART	STYLE NUMBER	
	Size 3	Size 4
Coil (S# marked on coil)		
Arc Box (2 pole)	1490 469	1490 469
Arc Box (3 Pole)	1490 468	1490 468
Arc Box (4 Pole)	1600 430	1600 430
Arc Box (5 Pole)	1600 429	1600 429
Contact Kit (2 Pole)	1625 561	1625 562†
Contact Kit (3 Pole)	1625 563	1625 564†

† Stamped with numeral "4".

TABLE OF RATINGS

SIZE NO.	NO. OF POLES	MAXIMUM AMPERE RATINGS		MAXIMUM HORSEPOWER RATINGS					
				Volts—Single Phase			Volts—Polyphase		
		Open	Enclosed	115	230	440-600	110	208-220	440-600
3	2	100	90	7½	15	25	15	30	50
3	3	100	90	7½	15	25	15	30	50
3	4	100	90	15	30	50
3	5	100	90	15	30	50
4	2	150	135	25	50	100
4	3	150	135	25	50	100
4	4	150	135	25	50	100
4	5	150	135	25	50	100

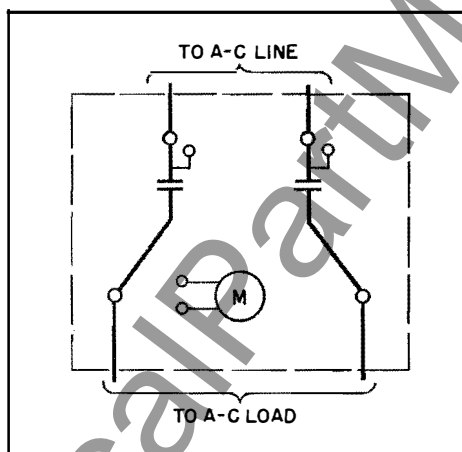


FIG. 1. Wiring Diagram for Two-Pole Contactor (Front View)

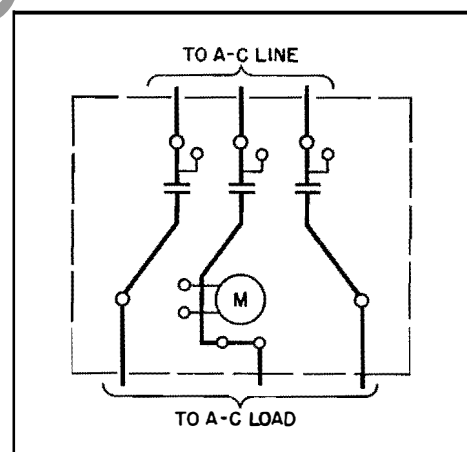


FIG. 2. Wiring Diagram for Three-Pole Contactor (Front View)

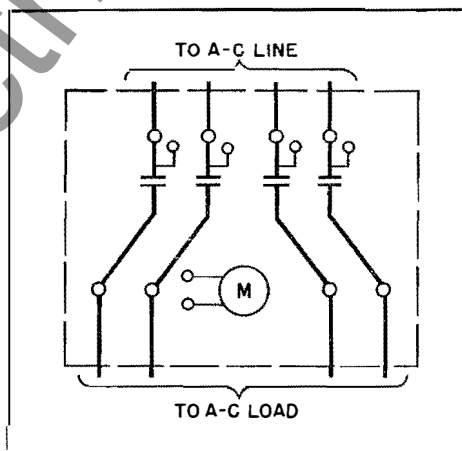


FIG. 3. Wiring Diagram for Four-Pole Contactor (Front View)

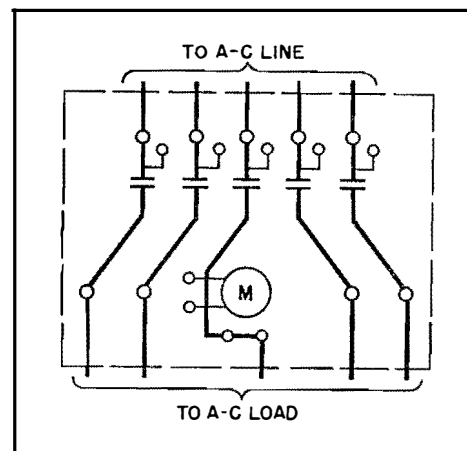


FIG. 4. Wiring Diagram for Five-Pole Contactor (Front View)

WESTINGHOUSE ELECTRIC CORPORATION

STANDARD CONTROL DIVISION

BEAVER, PA.