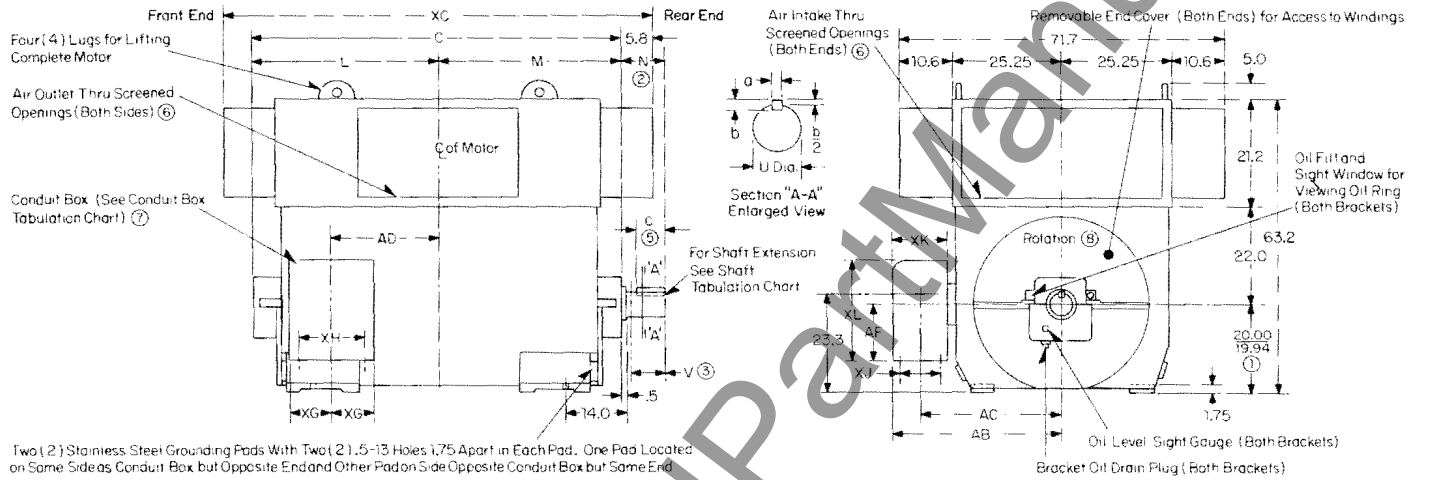




Drip Proof Weather Protected Type I Self Lubrication

Ac Motor Frame Series 8000
With Acoustical Air Inlet and Outlet
4 or More Poles
Horizontal for Coupled Service
Machine to be Shipped Assembled

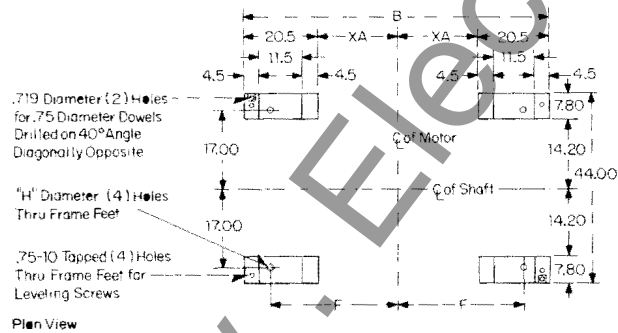
Life-Line D Motors, Squirrel Cage



Two (2) Stainless Steel Grounding Pads With Two (2) .5-13 Holes 1.75 Apart in Each Pad. One Pad Located on Same Side as Conduit Box but Opposite End and Other Pad on Side Opposite Conduit Box but Same End

Dimensions, Inches Not to be used for construction purposes unless dimensions are approved.
Applying to Each Frame Number

Frame No.	Shaft Extension Availability	B	C	F	H	L	M	XA	XC	AD	Approx Weight	Shaft Dimensions						
												Shaft	U-Dia	N	v	a	b	c
8008	S50	53.40	67.00	20.00	1.31	33.50	33.50	6.2	78.6	13.7	12.215	S50	5.0030	9.25	8.50	1.25	1.25	6.12
8009	S55 S50	58.40	72.00	22.50	1.31	36.00	36.00	8.7	83.6	16.2	13.350	S55	5.0020	10.25	9.50	1.25	1.25	7.50
8010	S60 S55	63.40	77.00	25.00	1.56	38.50	38.50	11.2	88.6	18.7	14.845	S60	5.5030	10.75	10.00	1.50	1.50	7.50
8011	S60 S55	69.40	83.00	28.00	1.56	41.50	41.50	14.2	94.6	21.7	16.295	S60	6.0035	11.75	11.00	1.75	1.75	7.50



Special Conduit Box Dimensions

AB	AC	AF	XG	XH	XJ	XK	XL
42.5	35.7	16.0	14.0	24.0	8.0	16.0	28.0

- When exact dimension is required, shim up to .060 inch may be necessary
- Motor rotor has .50 inch minimum end play. Use of limited end float coupling is required as recommended by NEMA MG1-21.81
- Dimension V represents usable length of shaft
- Seal plates with hold down bolts are available when specified
- Motors are factory balanced with a half key of length per NEMA MG1 20.52
- Screened covers are furnished, filters supplied only if ordered
- Conduit boxes supplied are undrilled. Dimensions XH and XJ represent usable drilling area for customers conduit. Dimensions AC and AD represent centers of this area
- Direction of rotation must be specified when ordering any 4 pole motor
- Split sleeve bearings. Ring oil lubed

Approval

Customer				Customer Order			
G.O.		Item		Application			
Hp		Rpm		PH		Volts	
Frame		Enclosure		Style			
Certified By		Date		Reference Drawing 1663D46 Sub. 3			



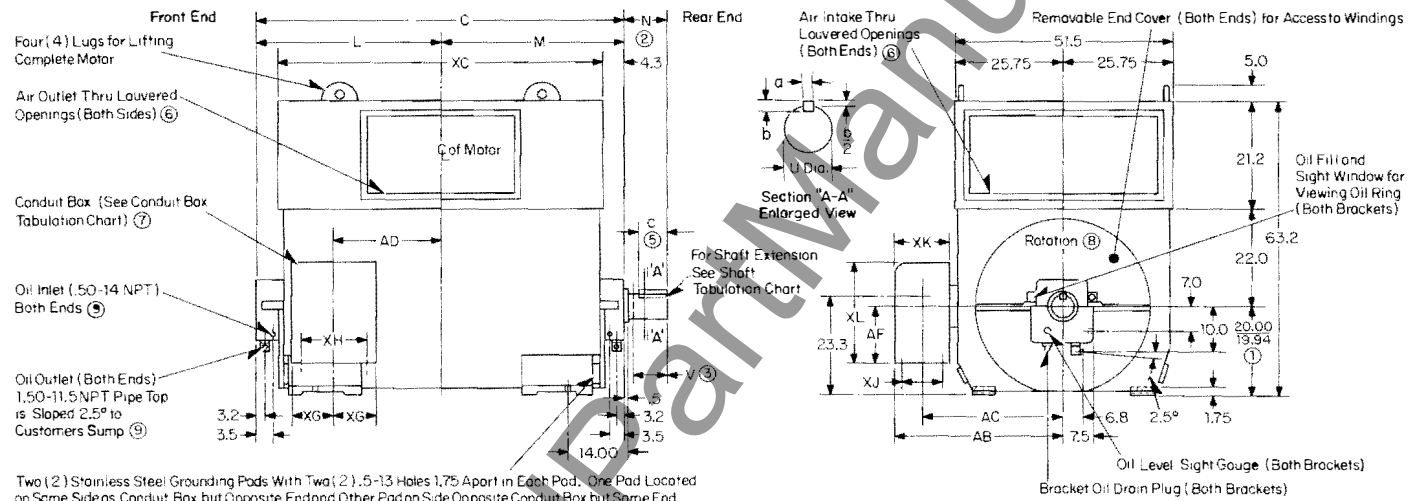
June, 1977
New Information

Mailed To: E.D/2128/PL, 1738, 1819/DS

Ac Motor Frame Series 8000
4 or More Poles
Horizontal for Coupled Service
Machine to be Shipped Assembled

Drip Proof Weather Protected Type I Flood Lubrication

Life-Line D Motors, Squirrel Cage



Two (2) Stainless Steel Grounding Pads With Two (2) .5-13 Holes 1.75 Apart in Each Pad. One Pad Located on Same Side as Conduit Box but Opposite End and Other Pad on Side Opposite Conduit Box but Same End

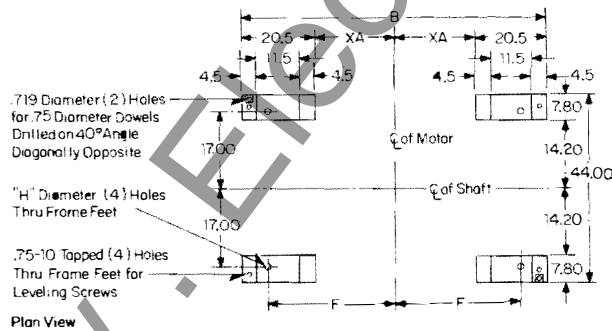
Dimensions, Inches Not to be used for construction purposes unless dimensions are approved.
Applying to Each Frame Number

Frame No.	Shaft Extension Availability	B	C	F	H	L	M	XA	XC	AD	Approx Weight	Shaft Dimensions						
												Shaft	U-Dia	N	V	a	b	c
8008	S50	53.40	67.00	20.00	1.31	33.50	33.50	6.2	58.40	13.7	11.950	S50	5.0030	9.25	8.50	1.25	1.25	6.12
8009	S55 S50	58.40	72.00	22.50	1.31	36.00	36.00	8.7	63.40	16.2	13.080	S55	5.5030	10.25	9.50	1.25	1.25	7.50
8010	S60 S55	63.40	77.00	25.00	1.56	38.50	38.50	11.2	68.40	18.7	14.560	S60	5.5020	10.75	10.00	1.50	1.50	7.50
8011	S60 S55	69.40	83.00	28.00	1.56	41.50	41.50	14.2	74.40	21.7	16.000	S60	6.0035	10.75	10.00	1.50	1.50	7.50

Special Conduit Box Dimensions

AB	AC	AF	XG	XH	XJ	XK	XL
42.5	35.7	16.0	14.0	24.0	8.0	16.0	28.0

- ① When exact dimension is required, shim up to .060 inch may be necessary
- ② Motor rotor has .50 inch minimum end play. Use of limited end float coupling is required as recommended by NEMA MG1-21.81
- ③ Dimension V represents usable length of shaft
- ④ Soleplates with hold down bolts are available when specified
- ⑤ Motors are factory balanced with a half key of length per NEMA MG1-20.52
- ⑥ Louvered covers are furnished, filters supplied only if ordered
- ⑦ Conduit boxes supplied are undrilled. Dimensions XH and XJ represent usable drilling area for customers conduit. Dimensions AC and AD represent centers of this area
- ⑧ Direction of rotation must be specified when ordering any 4 pole motor
- ⑨ Oil system furnished by others
- ⑩ Split sleeve bearings



Approval

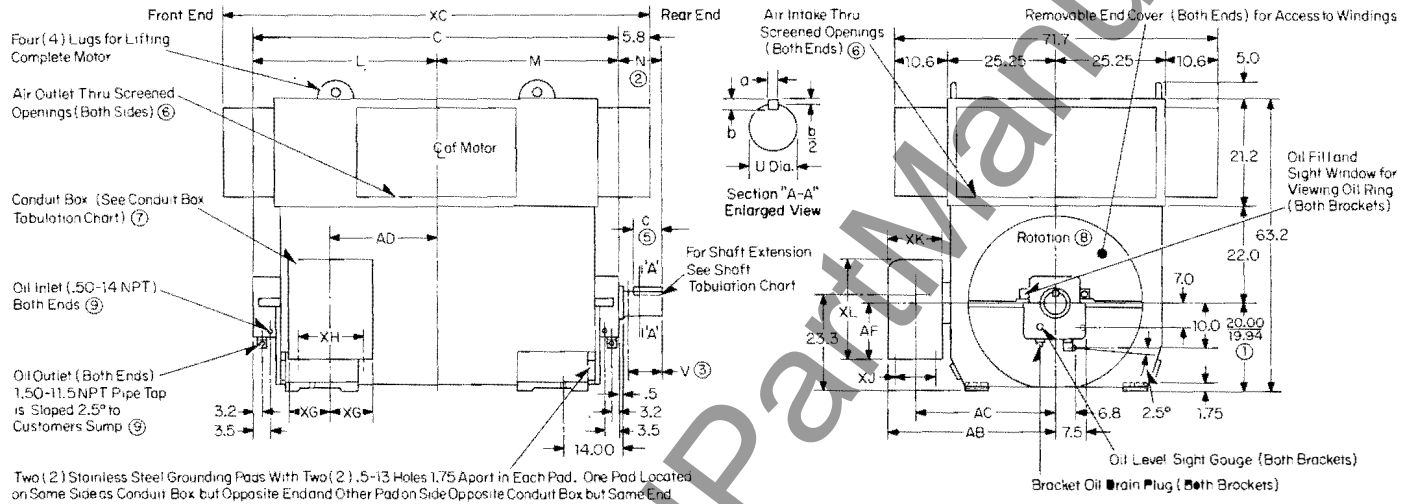
Customer		Customer Order			
G.O.	Item	Application			
Hp	Rpm	PH	HZ	Volts	
Frame	Enclosure	Style			
Certified By	Date	Reference Drawing 1663D36 Sub. 3			



Drip Proof Weather Protected Type I Flood Lubrication

Ac Motor Frame Series 8000
With Acoustical Air Inlet and Outlet
4 or More Poles
Horizontal for Coupled Service
Machine to be Shipped Assembled

Life-Line D Motors, Squirrel Cage



Two (2) Stainless Steel Grounding Pads With Two (2) .5-13 Holes 1.75 Apart in Each Pad. One Pad Located on Same Side as Conduit Box but Opposite End and Other Pad on Side Opposite Conduit Box but Same End

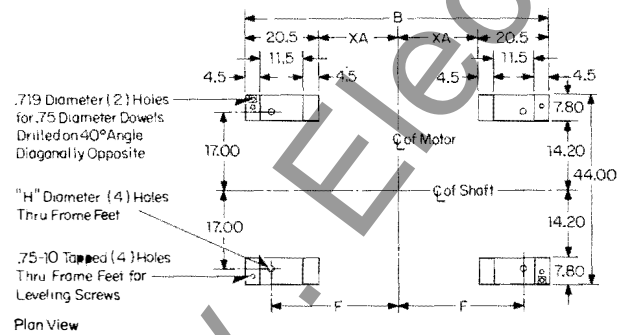
Dimensions, Inches Not to be used for construction purposes unless dimensions are approved.
Applying to Each Frame Number

Frame No.	Shaft Extension Availability	B	C	F	H	L	M	XA	XC	AD	Approx Weight	Shaft Dimensions						
												Shaft	U-Dia	N	V	a	b	c
8008	S50	53.40	67.00	20.00	1.31	33.50	33.50	6.2	78.6	13.7	12.215	S50	5.0030	9.25	8.50	1.25	1.25	6.12
8009	S55 S50	58.40	72.00	22.50	1.31	36.00	36.00	8.7	83.6	16.2	13.350	S55	5.5030	10.25	9.50	1.25	1.25	7.50
8010	S60 S55	63.40	77.00	25.00	1.56	38.50	38.50	11.2	88.6	18.7	14.845	S60	5.5020	10.75	10.00	1.50	1.50	7.50
8011	S60 S55	69.40	83.00	28.00	1.56	41.50	41.50	14.2	94.6	21.7	16.295	S60	6.0035	10.75	10.00	1.50	1.50	7.50

Special Conduit Box Dimensions

AB	AC	AF	XG	XH	XJ	XK	XL
42.5	35.7	16.0	14.0	24.0	8.0	16.0	28.0

- ① When exact dimension is required, shim up to .060 inch may be necessary
- ② Motor rotor has .50 inch minimum end play. Use of limited end float coupling is required as recommended by NEMA MG1-21.81
- ③ Dimension V represents usable length of shaft
- ④ Soleplates with hold down bolts are available when specified
- ⑤ Motors are factory balanced with a half key of length per NEMA MG1-20.52
- ⑥ Screened covers are furnished, filters supplied only if ordered
- ⑦ Conduit boxes supplied are undrilled. Dimensions XH and XJ represent usable drilling area for customers conduit. Dimensions AC and AD represent centers of this area
- ⑧ Direction of rotation must be specified when ordering any 4 pole motor.
- ⑨ Oil system furnished by others
- ⑩ Split sleeve bearings



Approval

Customer		Customer Order			
G.O.	Item	Application			
Hp	Rpm	PH	HZ	Volts	
Frame	Enclosure	Style			
Certified By	Date	Reference Drawing 1663D35 Sub. 3			



com

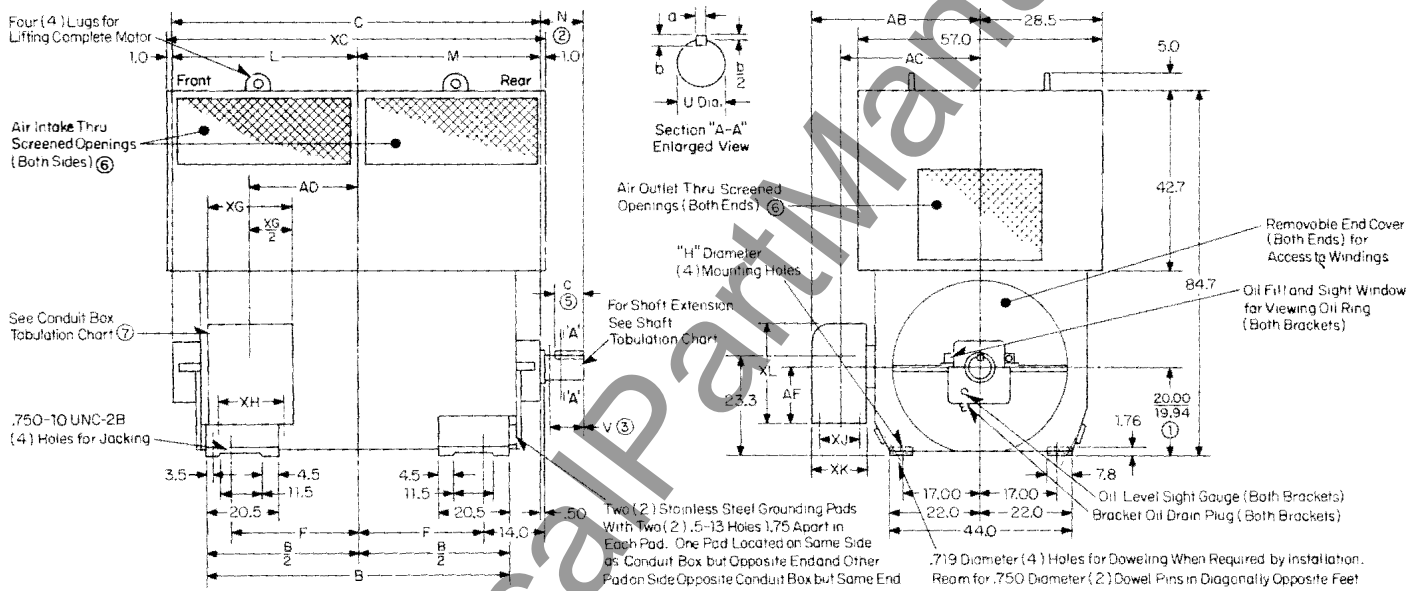
June, 1977
 New Information

Mailed To: E.D/2128/PL, 1738, 1819/DS

Ac Motor Frame Series 8000
 4 or More Poles
 Horizontal for Coupled Service
 Machine to be Shipped Assembled

Weather Protected Type WPI Self Lubrication

Life-Line D Motors, Squirrel Cage



Dimensions, Inches Not to be used for construction purposes unless dimensions are approved
 Applying to Each Frame Number

Frame No.	Shaft Extension Availability	B	C	F	H	L	M	AD	XC	Approx Weight	Shaft Dimensions						
											Shaft	U-Dia	N	V	a	b	c
8008	S50	53.40	67.5	20.00	1.31	33.5	33.5	13.7	69.0	12.615	S50	5.0030	9.25	8.50	1.25	1.25	6.12
8009	S55 S50	58.40	72.5	22.50	1.31	36.0	36.0	16.2	74.0	13.765	S55	5.0020	10.25	9.50	1.25	1.25	7.50
8010	S60 S55	63.40	77.5	25.00	1.56	38.5	38.5	18.7	79.0	15.270	S60	5.5030	11.00	10.00	1.50	1.50	7.50
8011	S60 S55	69.40	83.5	28.00	1.56	41.5	41.5	21.7	85.0	16.740	S60	6.0035	12.00	11.00	1.75	1.75	7.50

Special Conduit Box Dimensions

AB	AC	AF	XG	XH	XJ	XK	XL
42.5	35.7	16.0	28.0	24.0	8.0	16.0	28.0

- When exact dimension is required, shime up to .060 inch may be necessary
- Motor rotor has .50 inch minimum end play. Use of limited end float coupling is required as recommended by NEMA MG1-21.81
- Dimension V represents usable length of shaft
- Soleplates with hold down bolts are available when specified
- Motors are factory balanced with a half key of length per NEMA MG1 20.52
- Screened covers are furnished filters supplied only if ordered
- Conduit boxes supplied are undrilled. Dimensions XH and XJ represent usable drilling area for customers conduit. Dimensions AC and AD represent centers of this area
- Direction of rotation must be specified when ordering any 4 pole motor
- Split sleeve bearings. Ring oil lubed

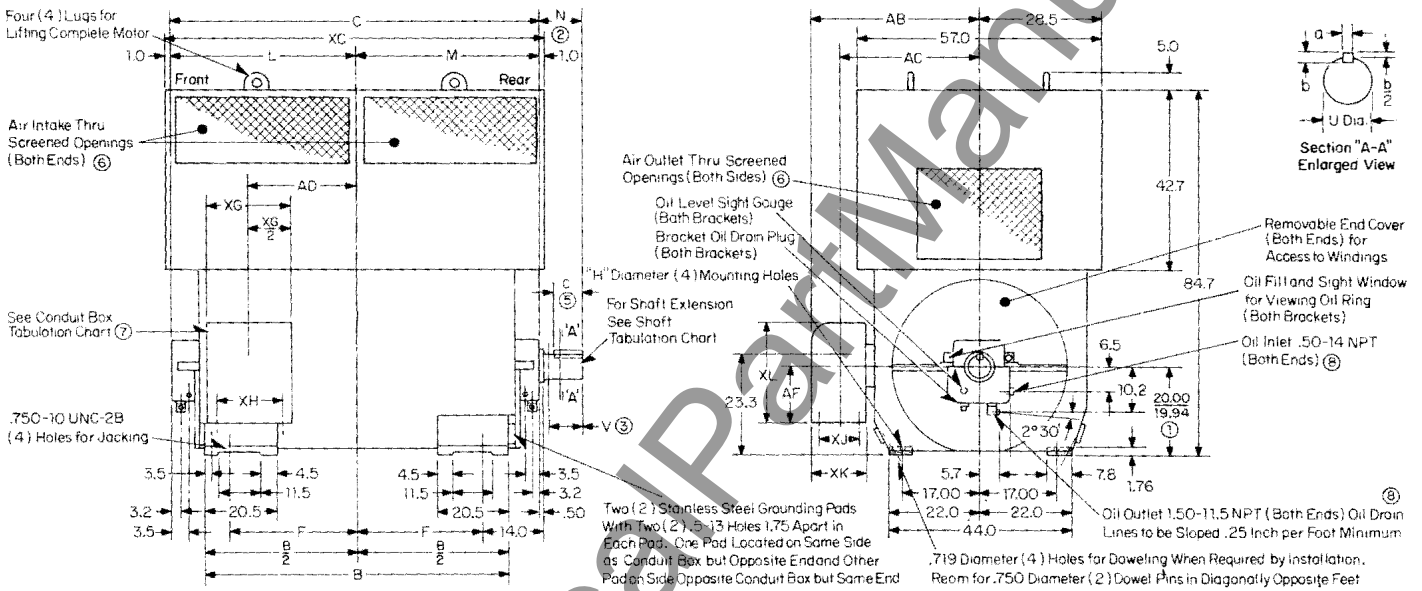
Approval

Customer				Customer Order			
G.O.		Item		Application			
Hp		Rpm		PH		Volts	
Frame		Enclosure		Style			
Certified By		Date		Reference Drawing 1663D49			

Weather Protected Type WP11 Flood Lubrication

Ac Motor Frame Series 8000
4 or More Poles
Horizontal for Coupled Service
Machine to be Shipped Assembled

Life-Line D Motors, Squirrel Cage



Dimensions, Inches Not to be used for construction purposes unless dimensions are approved.
Applying to Each Frame Number

Frame No.	Shaft Extension Availability	B	C	F	H	L	M	AD	XC	Approx Weight	Shaft Dimensions						
											Shaft	U-Dia	N	V	a	b	c
8008	S50	53.40	67.5	20.00	1.31	33.5	33.5	13.7	69.0	12.615	S50	5.0030	9.25	8.50	1.25	1.25	6.12
8009	S55 S50	58.40	72.5	22.50	1.31	36.0	36.0	16.2	74.0	13.765	S55	5.5030	10.25	9.50	1.25	1.25	7.50
8010	S60 S55	63.40	77.5	25.00	1.56	38.5	38.5	18.7	79.0	15.270	S60	5.5020	10.75	10.00	1.50	1.50	7.50
8011	S60 S55	69.40	83.5	28.00	1.56	41.5	41.5	21.7	85.0	16.740	S60	6.0035	10.75	10.00	1.50	1.50	7.50

Special Conduit Box Dimensions

AB	AC	AF	XG	XH	XJ	XK	XL
42.5	35.7	16.0	28.0	24.0	8.0	16.0	28.0

- ① When exact dimension is required, shime up to .060 inch may be necessary
- ② Motor rotor has .50 inch minimum end play. Use of limited end float coupling is required as recommended by NEMA MG1-21.81
- ③ Dimension V represents usable length of shaft
- ④ Soleplates with hold down bolts are available when specified.
- ⑤ Motors are factory balanced with a half key of length per NEMA MG1-20.52
- ⑥ Screened covers are furnished filters supplied only if ordered
- ⑦ Conduit boxes supplied are undrilled. Dimensions XH and XJ represent usable drilling area for customers conduit. Dimensions AC and AD represent centers of this area
- ⑧ Oil system furnished by others
- ⑨ Direction of rotation must be specified when ordering any 4 pole motor
- ⑩ Split sleeve bearings.

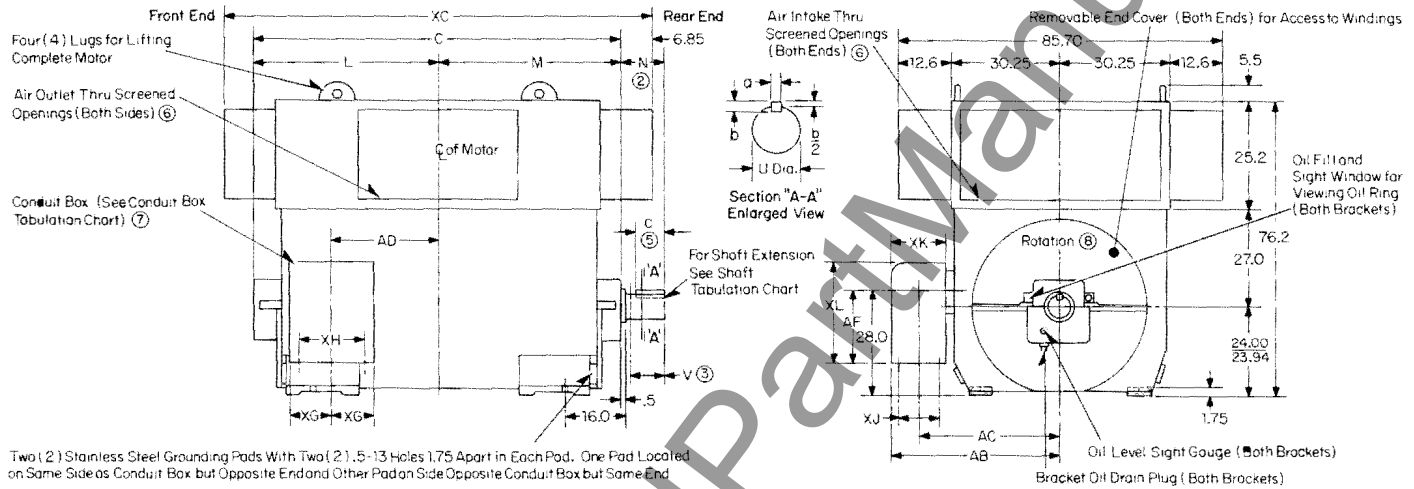
Approval

Customer				Customer Order			
G.O.		Item		Application			
Hp		Rpm		PH		HZ	
Volts		Style		Reference Drawing 1663D59 Sub. 3			
Certified By				Date			

Drip Proof Weather Protected Type I Self Lubrication

Ac Motor Frame Series 9600
With Acoustical Air Inlet and Outlet
4 or More Poles
Horizontal for Coupled Service
Machine to be Shipped Assembled

Life-Line D Motors, Squirrel Cage



Two (2) Stainless Steel Grounding Pads With Two (2) 1/8-13 Holes 1.75 Apart in Each Pad. One Pad Located on Same Side as Conduit Box but Opposite End and Other Pad on Side Opposite Conduit Box but Same End

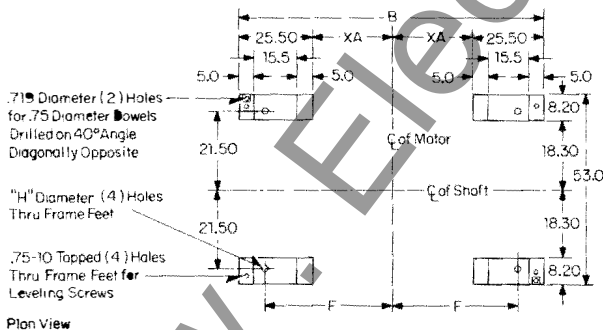
Dimensions, Inches Not to be used for construction purposes unless dimensions are approved.
Applying to Each Frame Number

Frame No.	Shaft Extension Availability		B	C	F	H	L	M	XA	XC	AD	Approx Weight	Shaft Dimensions							
	S65	S60											Shaft	U-Dia	N	V	a	b	c	
9609	S65	S60	55	66.3	81.00	25.00	1.56	40.50	40.50	6.8	94.7	25.0	18.755	S55	5 5030	10.25	9.50	1.25	1.25	7.50
9610	S70	S65	S60	72.3	87.00	28.00	1.56	43.50	43.50	9.8	100.7	28.0	21.050	S60	6 0035	10.75	10.00	1.50	1.50	7.50
9611	S70	S65	S60	79.3	94.00	31.50	1.88	47.00	47.00	13.3	107.7	31.5	24.080	S65	6 5040	12.25	11.50	1.50	1.50	9.25
9612	S70			87.3	102.00	35.50	1.88	51.00	51.00	17.3	115.7	35.5	26.830	S70	7 0040	12.25	11.50	1.75	1.50	9.25
															7 0030					

Special Conduit Box Dimensions

AB	AC	AF	XG	XH	XJ	XK	XL
47.5	39.5	16.0	14.0	24.0	8.0	16.0	28.0

- When exact dimension is required, shime up to .060 inch may be necessary
- Motor rotor has .50 inch minimum end play. Use of limited end float coupling is required as recommended by NEMA MG1-21.81
- Dimension V represents usable length of shaft
- Soleplates with hold down bolts are available when specified
- Motors are factory balanced with a half key of length per NEMA MG1-20.52
- Screens are furnished filters supplied only if ordered.
- Conduit boxes supplied are undrilled. Dimensions XH and XJ represent usable drilling area for customers conduit. Dimensions AC and AD represent centers of this area
- Direction of rotation must be specified when ordering any 4 pole motor
- Split sleeve bearings. Ring oil lubed.



Plan View

Approval

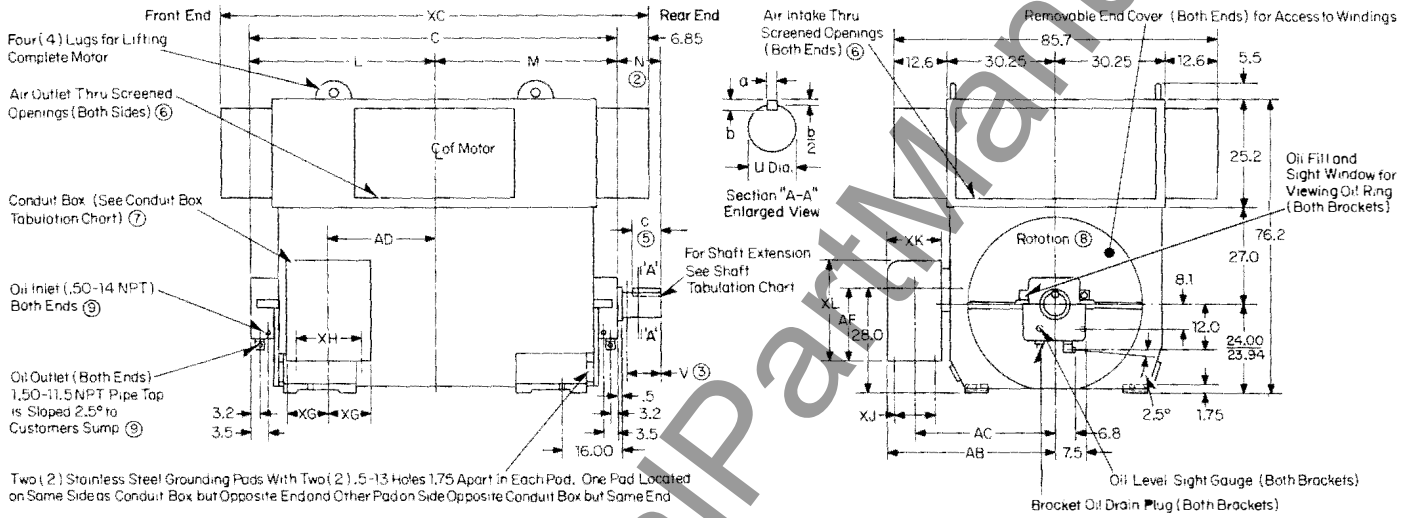
Customer			Customer Order			
G.O.	Item	Application	PH	HZ	Volts	
Hp	Rpm	Enclosure	Style			
Frame	Date	Reference Drawing 1663D48 Sub. 3				
Certified By						



Drip Proof Weather Protected Type I Flood Lubrication

Ac Motor Frame Series 9600
With Acoustical Air Inlet and Outlet
4 or More Poles
Horizontal for Coupled Service
Machine to be Shipped Assembled

Life-Line D Motors, Squirrel Cage



Two (2) Stainless Steel Grounding Pads With Two (2), 5-13 Holes 1.75 Apart in Each Pad. One Pad Located on Same Side as Conduit Box but Opposite End and Other Pad on Side Opposite Conduit Box but Same End

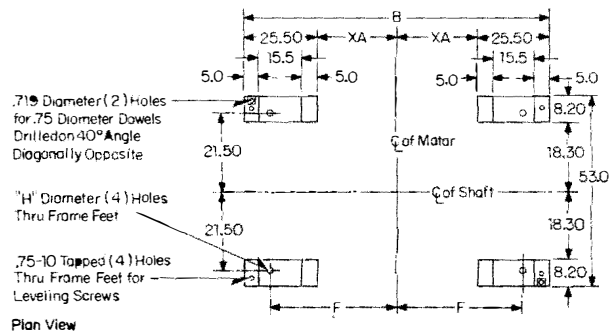
Dimensions, Inches Not to be used for construction purposes unless dimensions are approved.
Applying to Each Frame Number

Frame No.	Shaft Extension Availability		B	C	F	H	L	M	XA	XC	AD	Approx Weight	Shaft Dimensions																
	S65	S60											S55	Shaft	U-Dia	N	V	a	b	c									
9609	S65	S60	S55	66.3	81.00	25.00	1.56	40.50	40.50	6.8	94.7	25.0	S55	5.5030	10.25	9.50	1.25	1.25	7.50										
9610	S70	S65	S60	72.3	87.00	28.00	1.56	43.50	43.50	9.8	100.7	28.0	S60	6.0035	10.75	10.00	1.50	1.50	7.50										
													6.0025																
													S65	6.5040	12.25	11.50	1.50	1.50	9.25										
9611	S70	S65	S60	79.3	94.00	31.50	1.88	47.00	47.00	13.3	107.7	31.5	S65	6.5030	12.25	11.50	1.75	1.50	9.25										
																				7.0040									
9612	S70			87.3	102.00	35.50	1.88	51.00	51.00	17.3	115.7	35.5	S70	7.0040	12.25	11.50	1.75	1.50	9.25										

- ① When exact dimension is required, shim up to .060 inch may be necessary
- ② Motor rotor has .50 inch minimum end play. Use of limited end float coupling is required as recommended by NEMA MG1-21.81
- ③ Dimension V represents usable length of shaft
- ④ Soleplates with hold down bolts are available when specified
- ⑤ Motors are factory balanced with a half key of length per NEMA MG1-20.52
- ⑥ Screens are furnished filters supplied only if ordered
- ⑦ Conduit boxes supplied are undrilled. Dimensions XH and XJ represent usable drilling area for customers conduit. Dimensions AC and AD represent centers of this area
- ⑧ Direction of rotation must be specified when ordering any 4 pole motor
- ⑨ Oil system furnished by others
- ⑩ Split sleeve bearings

Special Conduit Box Dimensions

AB	AC	AF	XG	XH	XJ	XK	XL
47.5	39.5	16.0	14.0	24.0	8.0	16.0	28.0



Approval

Customer			Customer Order			
G.O.	Item	Application	PH	HZ	Volts	
Hp	Rpm					
Frame	Enclosure	Style				
Certified By	Date	Reference Drawing	1663D37 Sub. 3			



www.Westinghouse.com

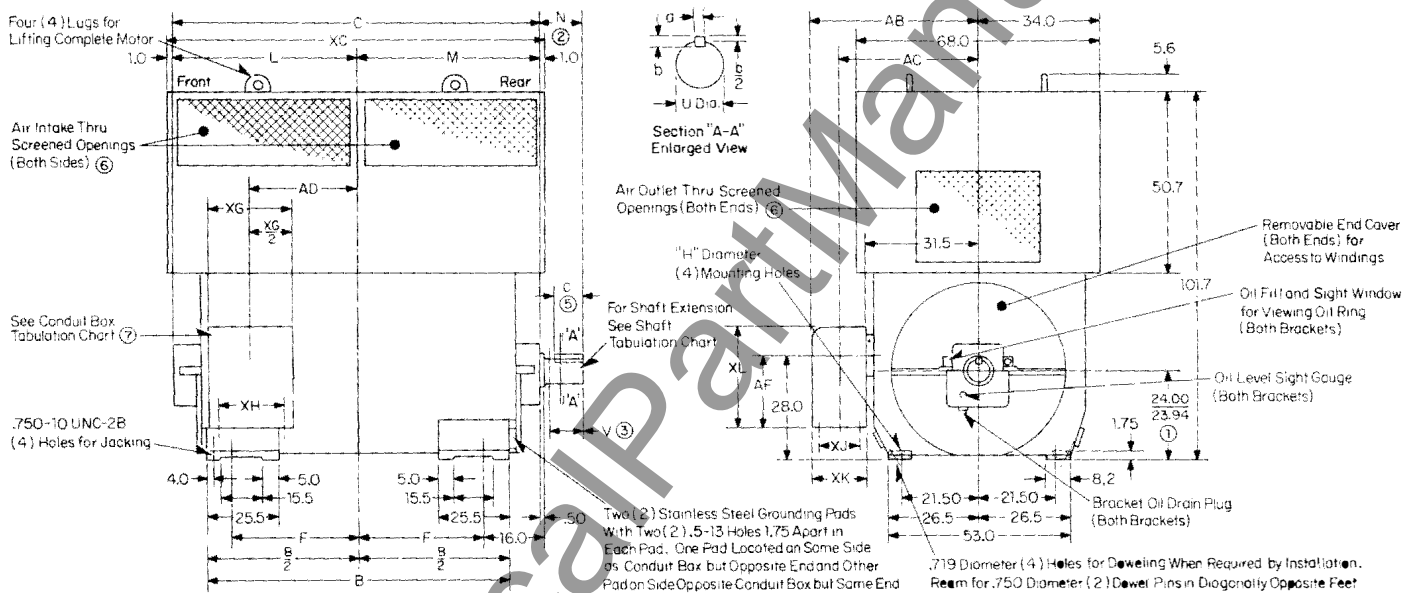
June, 1977
New Information

Mailed To: E,D/2128/PL, 1738, 1819/DS

Ac Motor Frame Series 9600
4 or More Poles
Horizontal for Coupled Service
Machine to be Shipped Assembled

Weather Protected Type WPII Self Lubrication

Life-Line D Motors, Squirrel Cage



Dimensions, Inches Not to be used for construction purposes unless dimensions are approved.
Applying to Each Frame Number

Frame No.	Shaft Extension Availability	B	C	E	H	L	M	AD	XC	Approx Weight	Shaft Dimensions						
											Shaft	U-Dia	N	V	a	b	c
9609	S65 S60 S55	66.3	81.0	25.00	1.56	40.50	40.50	25.0	83.0	19.625	S55	5.5030	10.25	9.50	1.25	1.25	7.50
9610	S70 S65 S60	72.3	87.0	28.00	1.56	43.50	43.50	28.0	89.0	21.650	S60	5.5020 6.0035	10.75	10.00	1.50	1.50	7.50
9611	S70 S65 S60	79.3	94.0	31.50	1.88	47.00	47.00	31.5	96.0	24.720	S65	6.0025 6.5040	12.25	11.50	1.50	1.50	9.25
9612	S70	87.3	102.0	35.50	1.88	51.00	51.00	35.5	104.0	27.505	S70	7.0040 7.0030	12.25	11.50	1.75	1.50	9.25

Special Conduit Box Dimensions

AB	AC	AF	XG	XH	XJ	XK	XL
47.5	39.5	16.0	28.0	24.0	8.0	16.0	28.0

- When exact dimension is required, shime up to .060 inch may be necessary
- Motor rotor has .50 inch minimum end play. Use of limited end float coupling is required as recommended by NEMA MG1-21.81
- Dimension V represents usable length of shaft.
- Soleplates with hold down bolts are available when specified
- Motors are factory balanced with a half key of length per NEMA MG1-20.52
- Screened covers are furnished filters supplied only if ordered
- Conduit boxes supplied are undrilled. Dimensions XH and XJ represent usable drilling area for customers conduit. Dimensions AC and AD represent centers of this area
- Split sleeve bearings. Ring oil lubed
- Direction of rotation must be specified when ordering any 4 pole motor

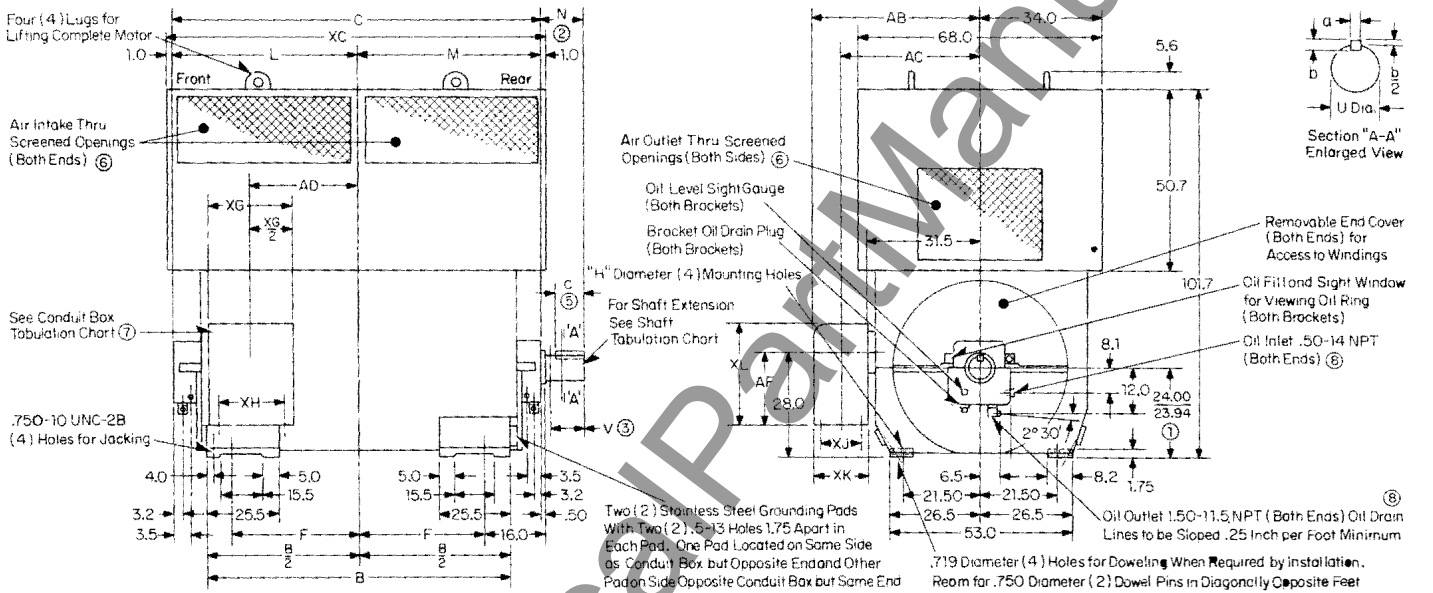
Approval

Customer			Customer Order			
G.O.		Item		Application		
Hp	Rpm	PH	HZ	Volts		
Frame	Enclosure	Style				
Certified By	Date	Reference Drawing 1663D50 Sub. 3				

Weather Protected Type WPII Flood Lubrication

Ac Motor Frame Series 9600
4 or More Poles
Horizontal for Coupled Service
Machine to be Shipped Assembled

Life-Line D Motors, Squirrel Cage



Dimensions, Inches Not to be used for construction purposes unless dimensions are approved.
Applying to Each Frame Number

Frame No.	Shaft Extension Availability	B	C	F	H	L	M	AD	XC	Approx Weight	Shaft Dimensions						
											Shaft	U-Dia	N	V	a	b	c
9609	S65 S60 S55	66.3	81.0	25.00	1.56	40.50	40.50	25.0	83.0	19.625	S55	5.5030	10.25	9.50	1.25	1.25	7.50
9610	S70 S65 S60	72.3	87.0	28.00	1.56	43.50	43.50	28.0	89.0	21.650	S60	6.0035	10.75	10.00	1.50	1.50	7.50
9611	S70 S65 S60	79.3	94.0	31.50	1.88	47.00	47.00	31.5	96.0	24.720	S65	6.5040	12.25	11.50	1.50	1.50	9.25
9612	S70	87.3	102.0	35.50	1.88	51.00	51.00	35.5	104.0	27.505	S70	7.0040	12.25	11.50	1.75	1.50	9.25

Special Conduit Box Dimensions

AB	AC	AF	XG	XH	XJ	XK	XL
47.5	39.5	16.0	28.0	24.0	8.0	16.0	28.0

- ① When exact dimension is required, shim up to .060 inch may be necessary
- ② Motor rotor has .50 inch minimum end play. Use of limited end float coupling is required as recommended by NEMA MG1-21.81
- ③ Dimension V represents usable length of shaft
- ④ Soleplates with hold down bolts are available when specified
- ⑤ Motors are factory balanced with a half key of length per NEMA MG1-20.52
- ⑥ Screened covers are furnished filters supplied only if ordered
- ⑦ Conduit boxes supplied are undrilled. Dimensions XH and XJ represent usable drilling area for customers conduit. Dimensions AC and AD represent centers of this area
- ⑧ Oil system furnished by others
- ⑨ Split sleeve bearings
- ⑩ Direction of rotation must be specified when ordering any 4 pole motor

Approval

Customer				Customer Order			
G.O.		Item		Application			
Hp	Rpm	PH	HZ	Volts			
Frame	Enclosure	Style					
Certified By	Date	Reference Drawing 1667D62 Sub. 3					