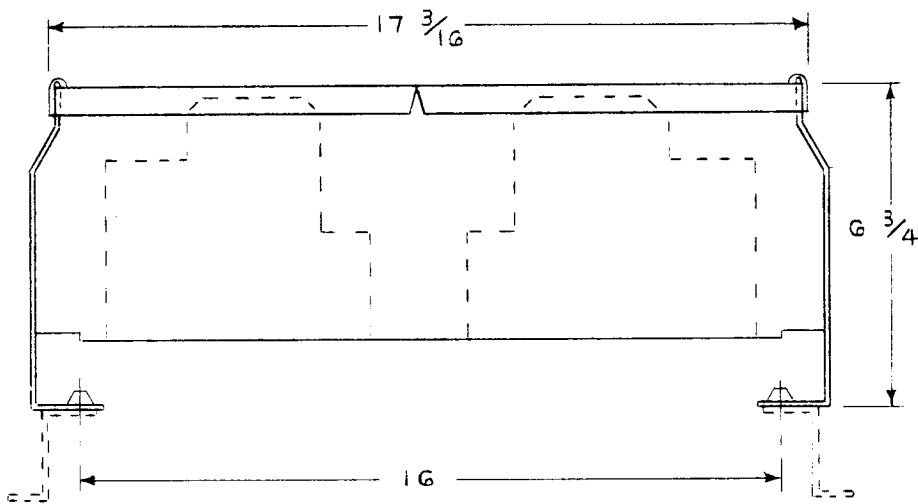
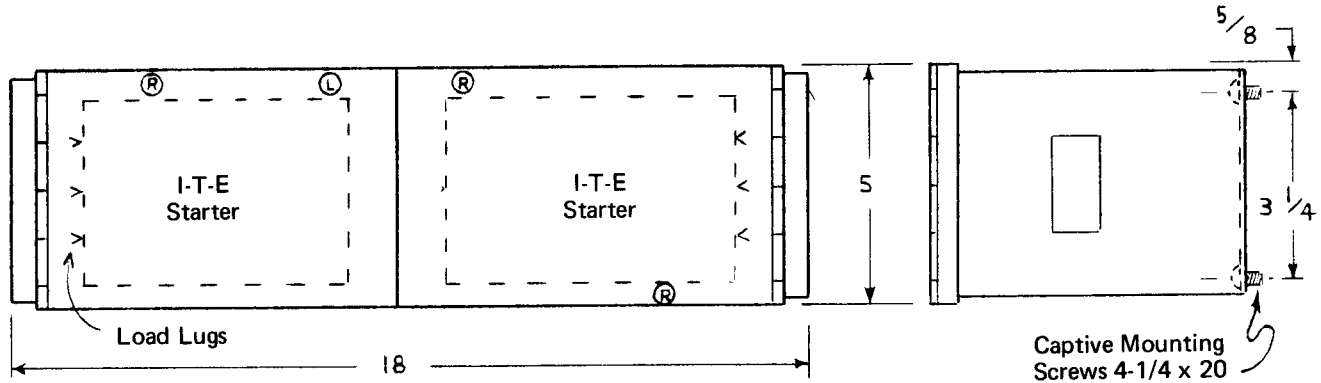




**PANELBOARD MOTOR STARTER UNIT
FULL VOLTAGE NON-REVERSING
SIZE 0 & 1 STARTER**



Code No. 5 E10- _____ / _____

This enclosure accommodates one or two Size 0 or 1 I-T-E starters or contactor.
The following accessories may be added:

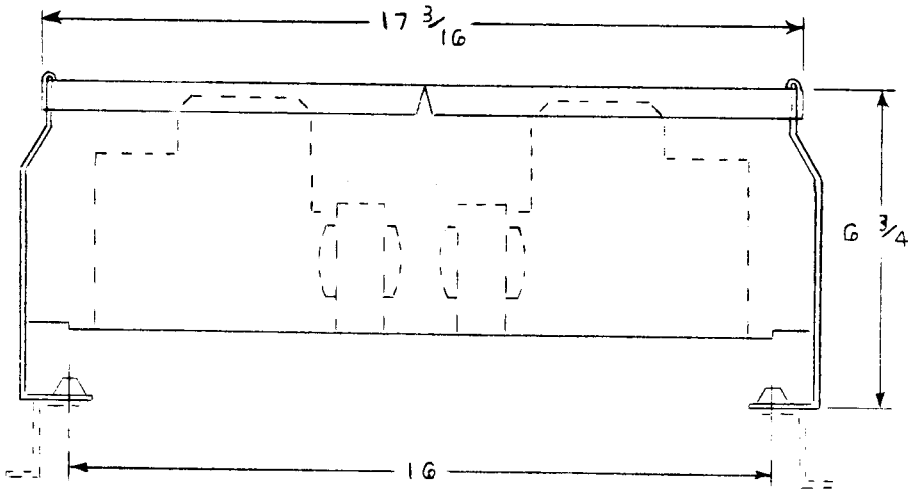
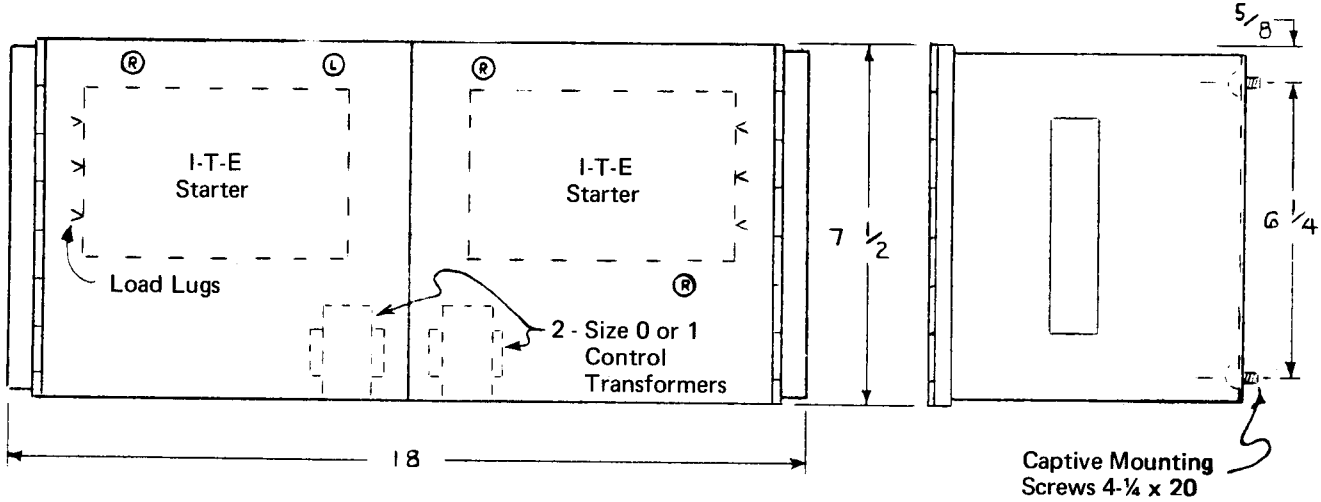
ACCESSORY DESCRIPTION	CODE LETTER
Stop-Start Pushbutton	A
Reset Pushbutton	B
Hand-Off-Auto Selector Switch	C
Aux. Interlock †	X1, X2

† Auxiliary interlock may be added to position marked R or L. R for right hand aux. contact unit & L for left hand aux. contact unit.
When ordering replacement interlocks, Specify Cat. No. R or L.

Finish shall be baked enamel light gray
A.S.A. No. 61



**PANELBOARD MOTOR STARTER UNIT
FULL VOLTAGE NON-REVERSING
SIZE 0 & 1 STARTER**



This enclosure accommodates one or two Size 0 or 1 I-T-E starters or contactors. The following accessories may be added:

Code No. 7 E10- _____ / _____

ACCESSORY DESCRIPTION	CODE LETTER
Stop-Start Pushbutton	A
Reset Pushbutton	B
Hand-Off-Auto Selector Switch	C
Pilot Light	D
Aux. Interlock †	X1, X2
Control Transformer (Includes Control Fuse)	T

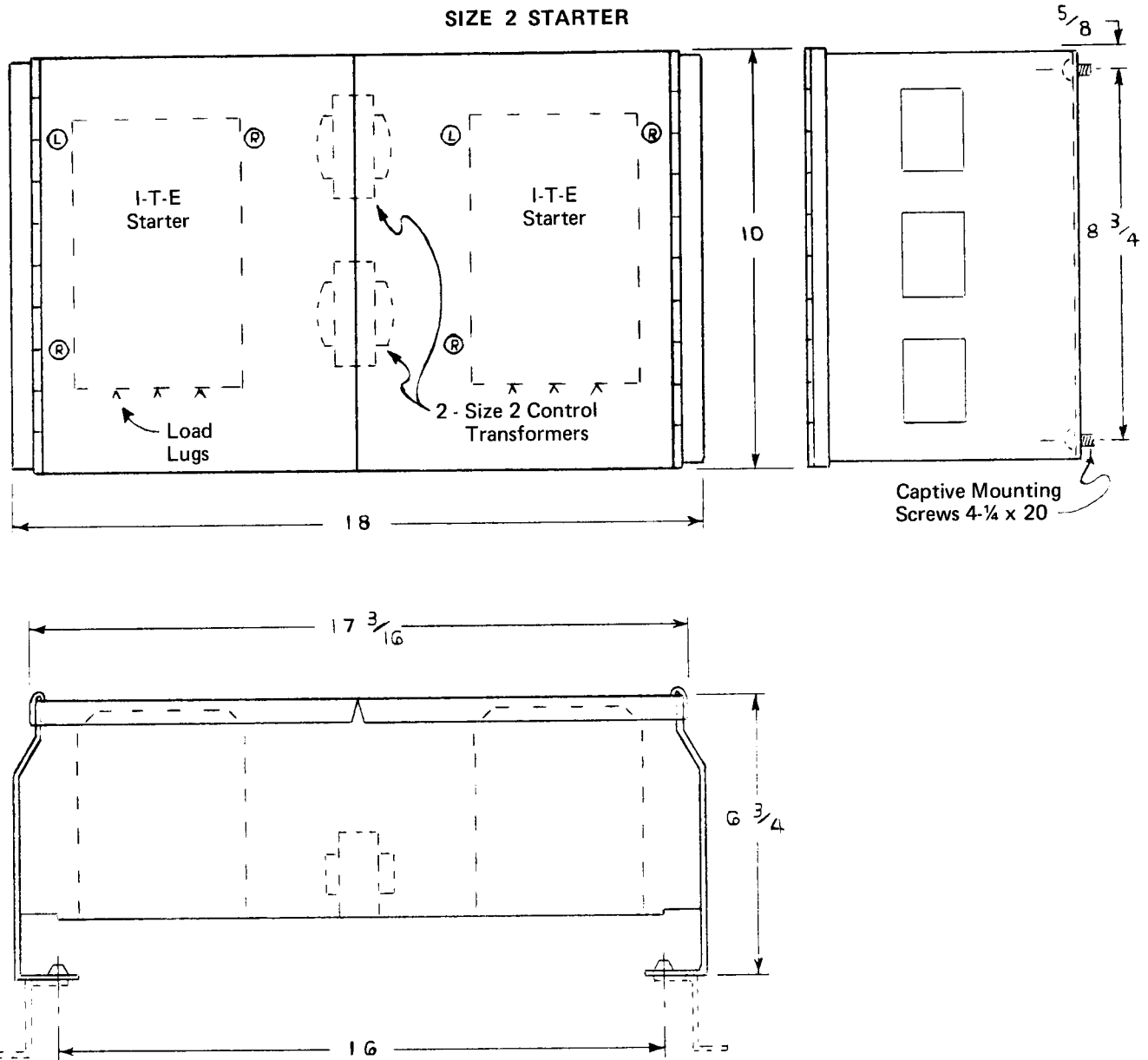
† Auxiliary interlock may be added to position marked R or L. R for right hand aux. contact unit & L for left hand aux. contact unit.

When ordering replacement interlocks specify Cat. No. R or L. Finish shall be baked enamel medium gray A.S.A No. 61



PANELBOARD MOTOR STARTER UNIT
FULL VOLTAGE NON-REVERSING

SIZE 2 STARTER



This enclosure accommodates two Size 2 or one Size 2 and one Size 0 or 1 I-T-E starters or contactors.
The following accessories may be added:

ACCESSORY DESCRIPTION	CODE LETTER
Stop-Start Pushbutton	A
Reset Pushbutton	B
Hand-Off-Auto Selector Switch	C
Pilot Light	D
Aux. Interlock †	X1, X2
Control Transformer (Includes Control Fuse)	T

Code No. 10 E10- _____ / _____
or
Code No. 11 E10- _____ / _____

† Auxiliary interlock may be added to position marked R or L. R for right hand aux. contact unit & L for left hand aux. contact unit.

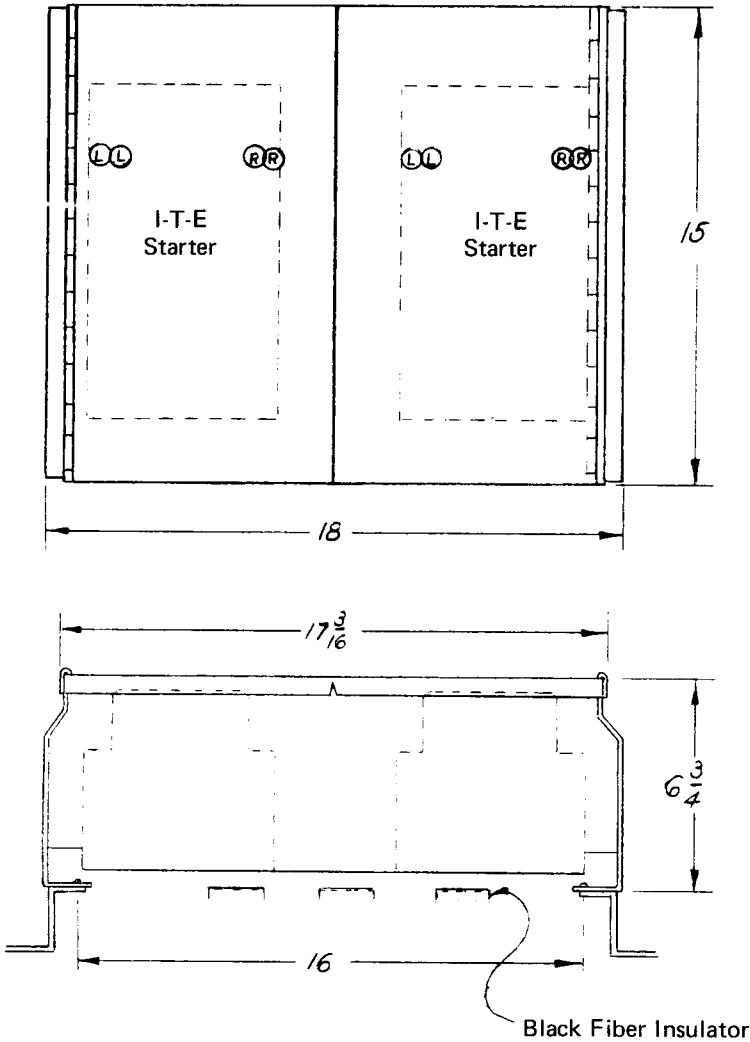
When ordering replacement interlocks specify Cat. No. R or L

Finish shall be baked enamel medium gray A.S.A. No. 61



PANELBOARD MOTOR STARTER UNIT
FULL VOLTAGE NON-REVERSING

SIZE 3 STARTER



Captive Mounting
Screws 4-1/4 x 20

Code No. 15E10- _____ / _____

This enclosure accommodates one or two Size 3 I-T-E starters or contactors.

The following accessories may be added:

ACCESSORY DESCRIPTION	CODE LETTER
Stop-Start Pushbutton	A
Reset Pushbutton	B
Hand-Off-Auto Selector Switch	C
Pilot Light	D
Aux. Interlock †	X1, X2
Control Transformers (Applies only when one starter or contactor is used and includes control fuse)	T

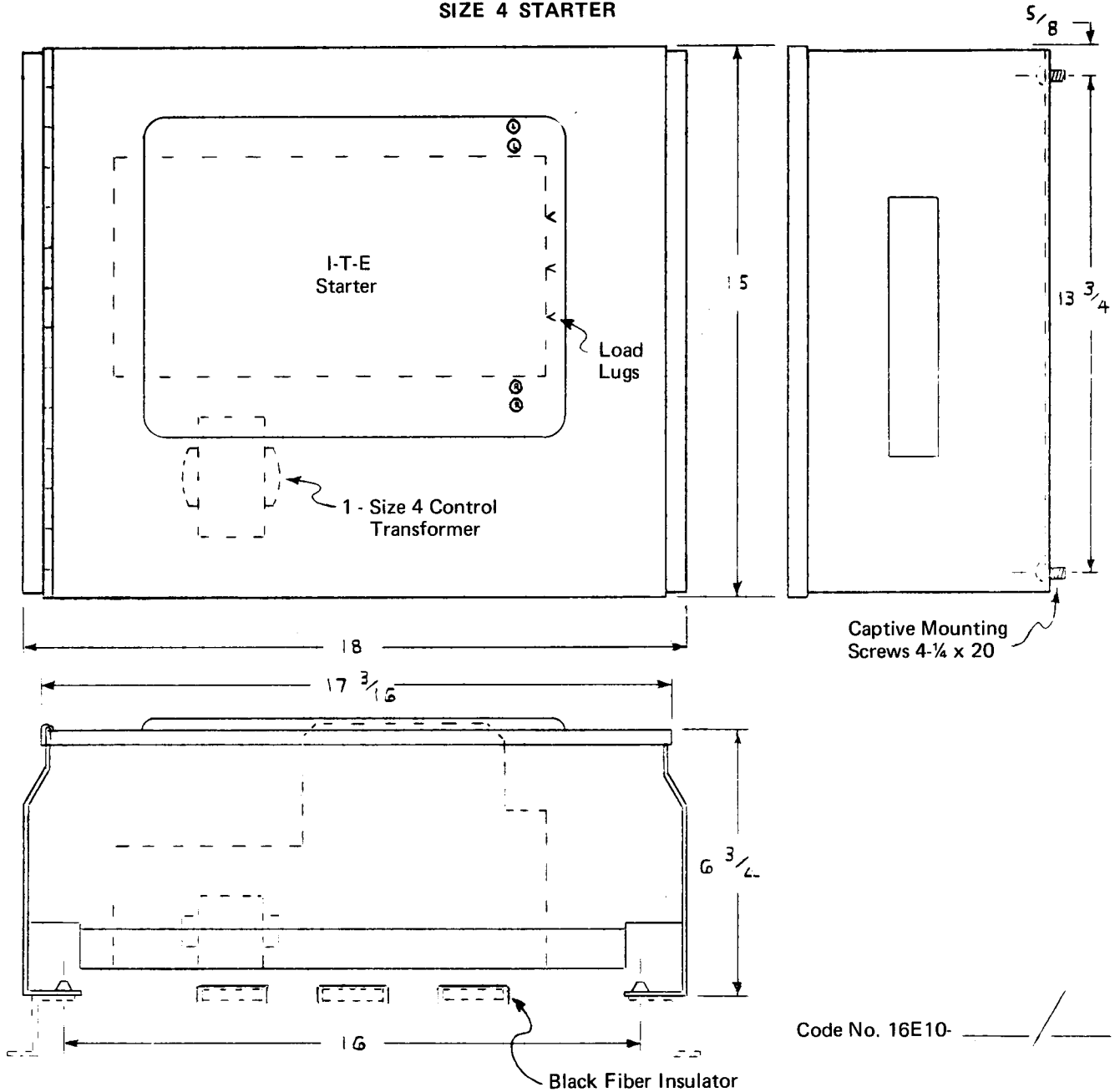
† Auxiliary interlock may be added to position marked R or L. R for right hand aux. contact unit & L for left hand aux. contact unit.

When ordering replacement interlocks specify Cat. No. R or L

Finish shall be baked enamel medium gray A.S.A. No. 61



PANELBOARD MOTOR STARTER UNIT
 FULL VOLTAGE NON-REVERSING
 SIZE 4 STARTER



This enclosure accommodates one Size 4 I-T-E starter or contactor.
 The following accessories may be added:

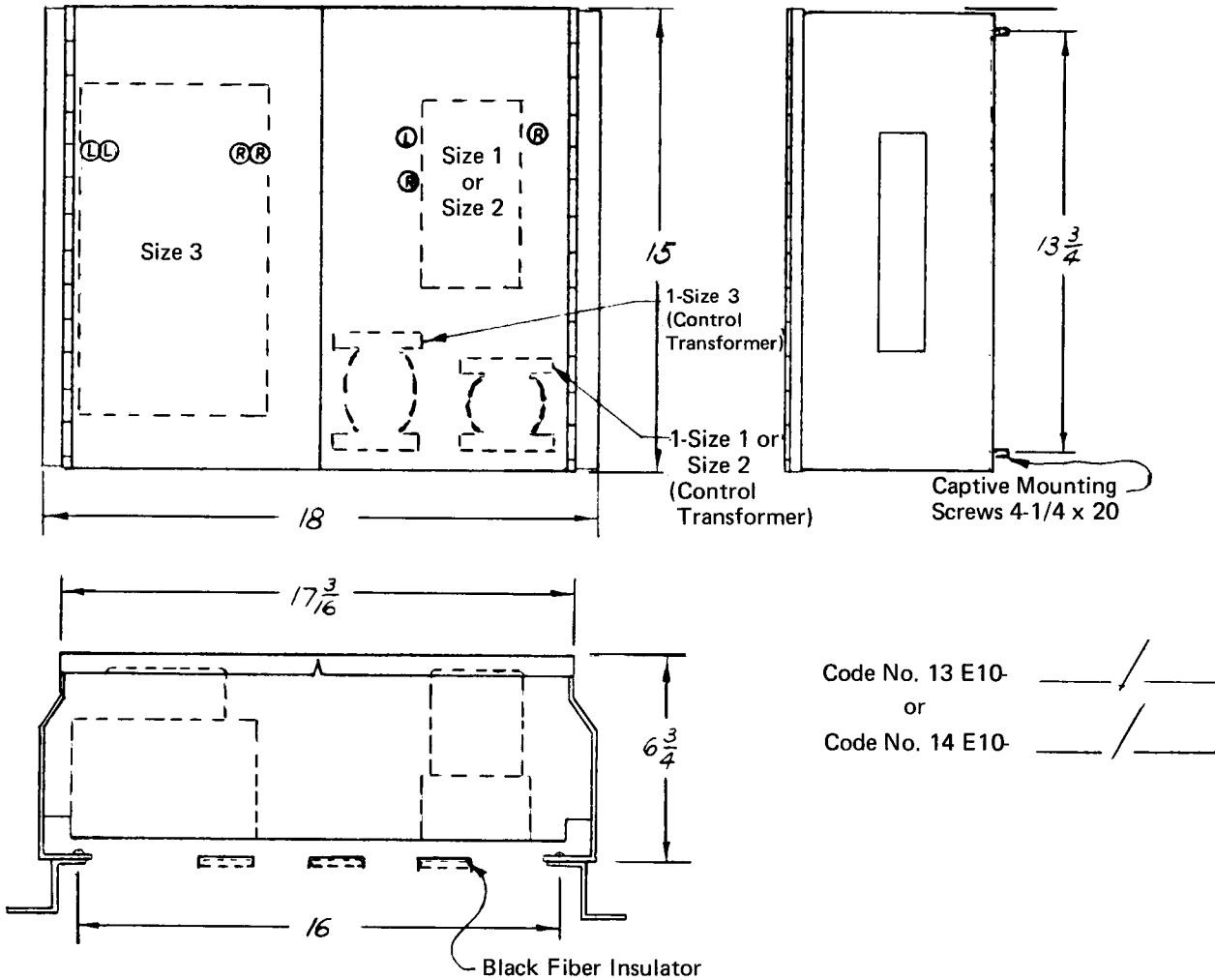
ACCESSORY DESCRIPTION	CODE LETTER
Stop-Start Pushbutton	A
Reset Pushbutton	B
Hand-Off-Auto Selector Switch	C
Pilot Light	D
Aux. Interlock †	X1, X2
Control Transformer (Includes Control Fuse)	T

† Auxiliary interlock may be added to position marked R or L. R for right hand aux. contact unit & L for left hand aux. contact unit.
 When ordering replacement interlocks specify Cat. No. R or L
 Finish shall be baked enamel medium gray A.S.A. No. 61



PANELBOARD MOTOR STARTER UNIT
FULL VOLTAGE NON-REVERSING

SIZE 1, 2 & 3



This enclosure accommodates one Size 3 and one Size 1 or 2 I-T-E starters or contactors. The following accessories may be added:

ACCESSORY DESCRIPTION	CODE LETTER	
Stop-Start Pushbutton	A	† Auxiliary interlock may be added to position marked R or L. R for right hand aux. contact unit & L for left hand aux. contact unit. When ordering replacement interlocks. Specify Cat. No. R or L.
Reset Pushbutton	B	
Hand-Off-Auto Selector Switch	C	
Pilot Light	D	
Aux. Interlock †	X1, X2	
Control Transformer (Includes Control Fuse)	T	Finish shall be baked enamel medium gray A.S.A. No. 61