

LOW OIL PRESSURE TRIP

The function of this mechanism (shown in Figure 1) is to shut down the turbine if, for any reason, the oil pressure drops below a predetermined minimum. It operates in conjunction with the overspeed trip linkage which is described in a separate leaflet.

As shown in the illustration, the mechanism is in its latched (or starting) position, with no oil pressure established. The latch pin "3" and latch "1" are engaged to hold the piston "7" in its inner position, compressing the spring "8".

The chamber in front of the piston "7" is connected to the bearing oil supply line by drilled passages as shown. As pressure is established in this chamber the piston moves inward, further compressing the spring "8". This piston movement also moves the latch "1" inward and the pin "3" is moved upward by the spring "2" thus disengaging the latch completely. The oil pressure now holds the piston "7" and latch "1" in the extreme inner position.

If the bearing oil pressure drops to the point at which the mechanism is set to operate, the oil pressure against the piston drops and the spring "8" moves the piston and rod "6" outward, causing the latch "1" to strike the overspeed trip lever. Movement of this trip lever shuts down the turbine as described under "Overspeed Trip Mechanism".

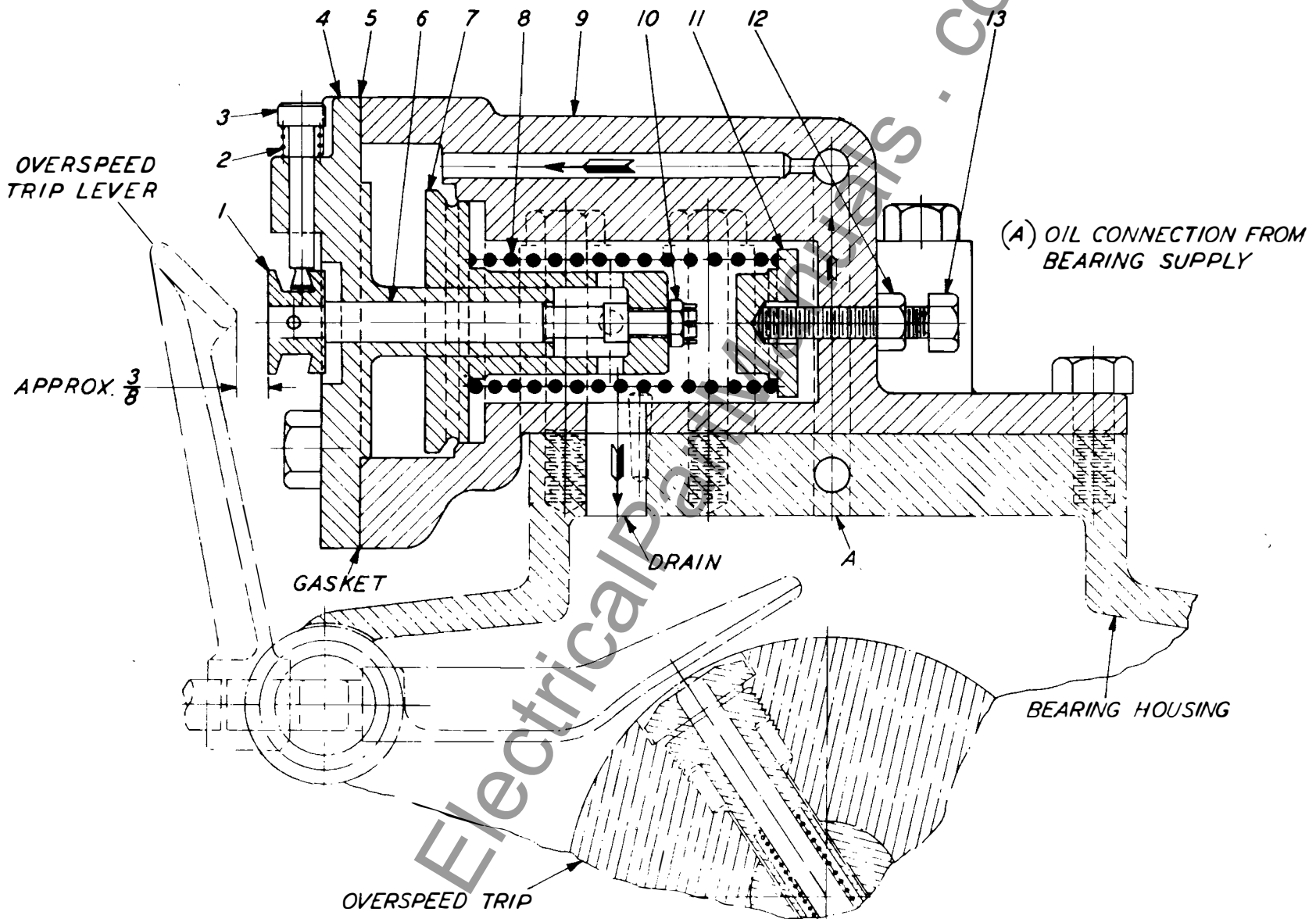
After this mechanism has tripped, the oil trip latch and also the overspeed trip linkage, must be reset by hand.

First: Push the latch "1" inward and push the pin "3" downward until the pin engages the latch to hold it in its inner position.

Second: Reset the overspeed trip linkage as described in its I.B. leaflet.

The following list has been compiled to facilitate ordering spare or renewal parts by item number and name together with the serial number of the turbine.

<u>Item No.</u>	<u>Name</u>
1	Trip Latch
2	Trip Latch Pin Spring
3	Trip Latch Pin
4	Trip Latch Bracket and Cover
5	Gasket
6	Trip Rod
7	Trip Piston
8	Trip Spring
9	Trip Cylinder
10	Trip Rod Nut
11	Trip Spring Seat
12	Trip Spring Adjusting Bolt Locknut
13	Trip Spring Adjusting Bolt



Low Oil Pressure Trip

Figure 1

WWW.ElectricalBooks.com