

March 1995  
Supersedes Descriptive Bulletin 41-728S,  
pages 1-2, dated November 1990  
Mailed to: E, D, C/41-700B

Device Number: 24

# CIRCUIT SHIELD® Type 59F Volts Per Hertz Relay



## Application

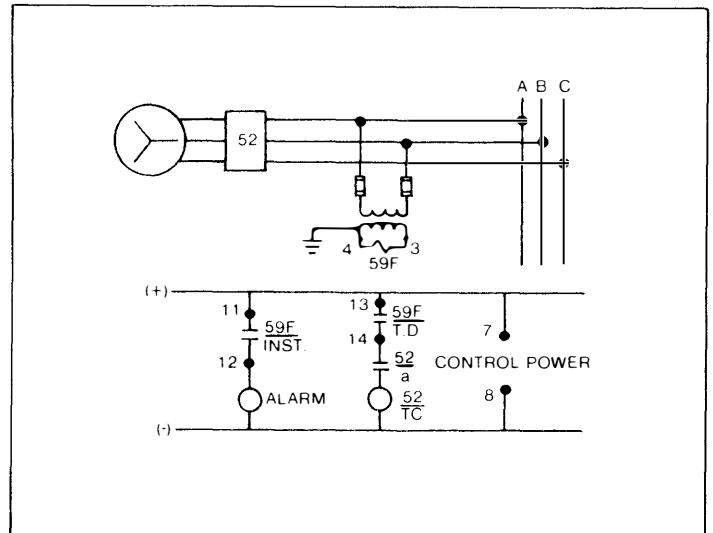
The Type 59F volts per Hertz relay is used to protect generators and transformers against overexcitation. Volts per hertz is a measure of flux which must be kept constant to avoid saturation.

At low frequencies (such as during start-up), voltages must be limited to less than rated voltage at rated frequency, according to a constant volts per hertz relationship. This is basically derived from 120V (secondary) at 60 Hz or 2V/Hz. Then, at 30 Hz, the relay will operate if the voltage is greater than 60V.

The Type 59F relay contains 2 normally open output contacts, one for alarm and one for tripping. The contact between terminals 11 and 12 closes immediately upon a volts/Hz condition above the pickup setting of the relay. If the condition persists for a period of time greater than the time delay setting, the contacts between terminals 13 and 14 also close. The time delay characteristic is "definite time."

## Features

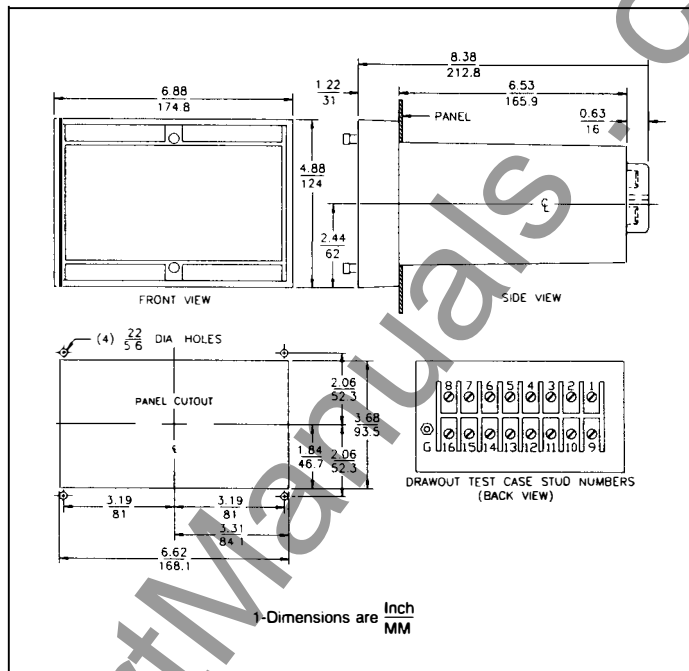
- Continuously adjustable pickup
- 15 to 72 hertz frequency range
- Output delay: 1-60 sec. or 0.5-15 sec.
- Separate instantaneous output
- Seismic capability to 6g ZPA
- Transient immunity
- Drawout construction
- 2 year warranty



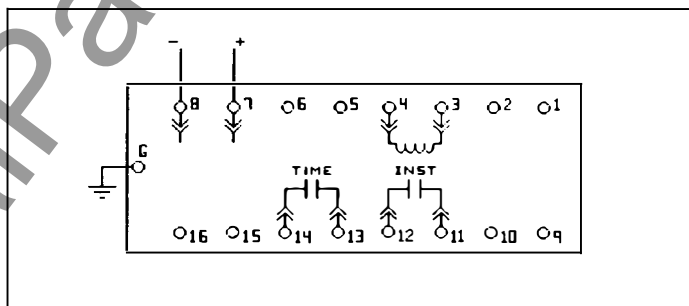
Typical Connections for Type 59F

### Specifications

- Pickup Range:** 1.8 to 3.0 Volts/Hertz, continuously adjustable
- Time Delay:** 1 to 60 sec or 0.5 to 15 sec. continuously adjustable
- Frequency Range:** 15 Hz to 72 Hz
- Input Circuit Rating:** 45 Volts @ 15 Hz, continuous  
180 Volts @ 60 Hz, continuous  
216 Volts @ 72 Hz, continuous
- Burden:** .01 VA @ 1.0 P.F., any setting
- Control Power:** Dual rated, 48/125 VDC, .08A max.  
48/110 VDC, .08A max.
- Output Circuit:** Tripping — 1 form A contact (delayed)  
Alarm — 1 form A contact (no delay)
- Output Rating:** Each contact
- @ 125 Vdc:** 30 Amps, Tripping Duty  
5 Amps, Continuous  
1 Amp, Opening, Resistive  
0.3 Amp, Opening Inductive
- Operating Temperature:** Minus 20°C to plus 70°C
- Seismic Capability:** More than 6g ZPA either AXIS biaxial broad-head multifrequency vibration without damage or malfunction ANSI/IEEE C37.98
- Transient Immunity:** More than 2500V, 1MHz bursts at 400 Hz repetition rate, continuous (ANSI C37.90a SWC); Fast Transient Test; EMI test.
- Weight:** Unboxed — 3.4 lbs. (1.5 Kg)  
Boxed — 4.1 lbs. (1.8 Kg)
- Volume:** — 0.26 cubic feet



Case Outline and Drilling (Inches)



Internal Connections (Rear View)

### How to Specify

Volts per hertz relay for generator or transformer overexcitation protection: Relay shall be Asea Brown Boveri Type 59F or approved equal, drawout case, capable of withstanding up to 6g ZPA seismic stress without damage or malfunction regardless of settings. Relay shall have minimum setting of 1.8 volts/hertz and maximum setting of 3.0 volts/hertz. Relay shall have an instantaneous contact output and a separate time delayed contact output. Built-in means shall be provided to allow operational tests without additional equipment.

### How to Order

For a complete listing of available versions of other voltage relays see TD 41-025.

Models are available for 48 or 125 Vdc control power and 120 Vac potential transformers. For other control voltages contact the nearest ABB Representative.

To place an order, or for further information, contact the nearest ABB Representative.

### Further Information

- List Prices: PL 41-020
- Technical Data: TD 41-025
- Instruction Book: IB 7.4.1.7-8
- Synchronous Generator Protection: AN 41-725S
- Other Protective Relays: Application Selector Guide, TD 41-016

November, 1990  
Supersedes Section 7.4.0.3, Type 59F on  
pages 4 and 5, dated January 1, 1990  
Mailed to: E, D, C/41-700B

## CIRCUIT SHIELD<sup>®</sup> Type 59F Volts Per Hertz Relay

Type	Max. Voltage Rating	Pickup Tap Range	Curve	Time	Output Contacts	Internal Connections	① Control Voltage	Catalog Number
59F	3V/Hz 15-72 Hz	1.8-3.0V/Hz	Definite and Inst.	1-60 sec. 0.5-15 sec.	2-A	16D211L	48/125 Vdc	411H4176
							48/110 Vdc	411H4106
							48/125 Vdc	411H6176
							48/110 Vdc	411H6106

① For other control voltages contact the nearest District Office.

To place an order, or for further information, contact the nearest District Office.

### Internal Connection Diagram

Note: Refer to Instruction Book IB 7.4.1.7-8② for contact logic data.

② Available upon request, only from Allentown Plant.

