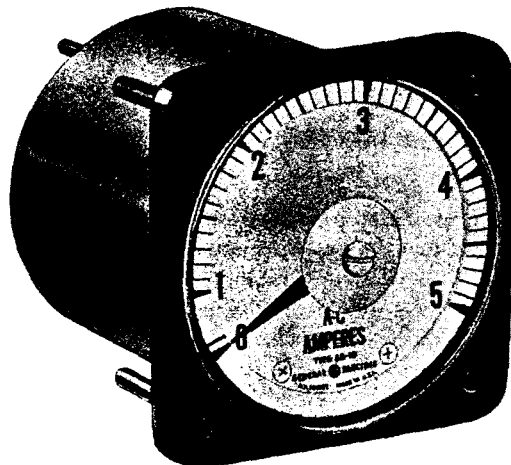


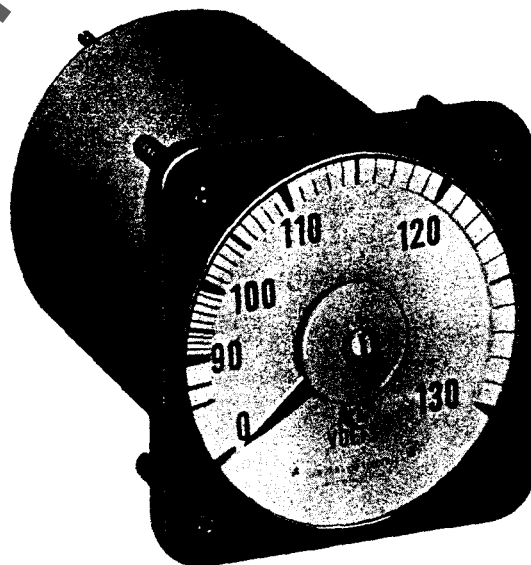
RENEWAL PARTS

TYPE AB AMMETERS AND VOLTMETERS

Types AB-14, AB-15, AB-16, AB-18 and AB-19



(PHOTO 2803804)



(PHOTO 1131728)

When ordering renewal parts, give quantity, catalog number, description of each item required, and complete nameplate reading.

GENERAL  ELECTRIC

subject to change without notice

ORDERING INSTRUCTIONS

This publication illustrates and describes the individual parts of the types AB-14, AB-15, AB-16, AB-18, AB-19 concentric scale switchboard instruments designed and manufactured by the General Electric Company, West Lynn, Mass. It should not be construed as instructions for repair, assembly, or disassembly. The General Electric Co. recommends that instruments in need of repair be returned to the nearest G-E Service Shop or to the factory.

This list of parts is presented for those having adequate service facilities and trained personnel.

Because of the wide variety of ratings and models, no catalog numbers have been assigned to the parts in this list. The parts shown here are typical of those used in type AB AC ammeters and voltmeters which employ a moving iron vane mechanism of the attraction-repulsion type. The correct part will be furnished if proper ordering information is given as outlined in the following paragraph.

When ordering parts listed in this publication the following information must be given to insure the proper identification of the parts required.

1. COMPLETE model number of the instrument as shown on the nameplate.
2. Instrument rating (scale volts or amperes and operating frequency).
3. Complete description of the part including color, value, or size where necessary.
4. Reference number of the part as shown in this listing and publication number GEF-3937.
5. Quantity of part required.

If your service facilities warrant stocking parts, those suggested for such a stock are marked with an asterisk (*) before the description for such a stock.

Ref. No.	Number Required for									Description	
	8AB14A	8AB14V	8AB15A	8AB15V	8AB16A	8AB16V	8AB18A	8AB18V	8AB19A		8AB19V
1	1	1									*Square metal cover assembly with three-quarter window opening of anti-static treated lucite
2			1	1							*Square, † Textolite cover assembly with three-quarter window opening
3					1	1					*8 3/4 in. square metal cover assembly with clear or etched dome shaped window
4							1	1			*Square die-cut cover assembly with clear or etched dome shaped window
5									1	1	*Steel cover assembly with crescent shaped window opening of plate or shatter-proof glass
6	1	1							1	1	Cover nameplate
7	4	4	4	4			4	4	4	4	*Screw for cover
8					4	4					*Screw for cover
9					1	1	1	1			*Rubber gasket for cover
10					1	1	1	1			Crank for zero set
11					1	1	1	1			Center disk
12					1	1	1	1			Shaft for zero set
13					1	1	1	1			*Dome shaped window
14					2	2	2	2			Clip for dome shaped window
15					2	2	2	2			Eyelit for window clip
16					1	1					Cover bezel, 8 3/4 in. square
							1	1			Cover bezel, 4 1/4 in. square
17	1	1	1	1					1	1	*Fiber gasket for cover
18	1	1	1	1					1	1	Crank for zero set
19			1	1							Center disk
20	1	1	1	1							Zero set bushing
									1	1	* Shaft for zero set
	1	1									Washer for zero set bushing
21			4	4							Clip holding window in cover
22			4	4							Screw fastening clip to cover (No. 2-64, 7/32 in.)
23	1	1	1	1					1	1	*Window Δ
24	1	1									Cover and window clip assembly
			1	1							Cover
									1	1	Cover
25	1	1	1	1			1	1	1	1	Case assembly
26					1	1					Case assembly
27	3	3	3	3	3	3	3	3	3	3	Case screw
28			3	3	3	3	3	3	3	3	Lock washer for case screw
29	3	3									Mounting lug
30	3	3									Screw for mounting lug
31	1	1	1	1	1	1	1	1	1	1	Gasket for case
32	1	1	1	1	1	1	1	1	1	1	Resistor cage
33		2	2	2	2	2	2	2	2	2	Nut fastening resistor cage to stud (No. 4-48)
34		2	2	2	2	2	2	2	2	2	Lockwasher for stud nut
35	1	1	1	1	1	1	1	1	1	1	Nameplate
36	2	2	2	2	2	2	2	2	2	2	Screw for nameplate (No. 4-48 x 3/16 in.)
37	2	2	2	2	2	2	2	2	2	2	Washer for nameplate screw
38	1	1	1	1	1	1	1	1	1	1	§Base assembly complete
39	a	a	a	a	a	a	a	a	a	a	*Resistor, fixed
40	a	a	a	a	a	a	a	a	a	a	*Resistor, adjustable
41	b	b	b	b	b	b	b	b	b	b	Centering washer
42	c	c	c	c	c	c	c	c	c	c	Screw holding resistor to base
43	c	c	c	c	c	c	c	c	c	c	Nut for resistor screw
44	c	c	c	c	c	c	c	c	c	c	Washer for resistor screw

a Quantity and resistance value as required. Specify when ordering. Additional external resistance is required for ratings above 150 volts. These resistors and the cage are not shown.

b 2 required per resistor.

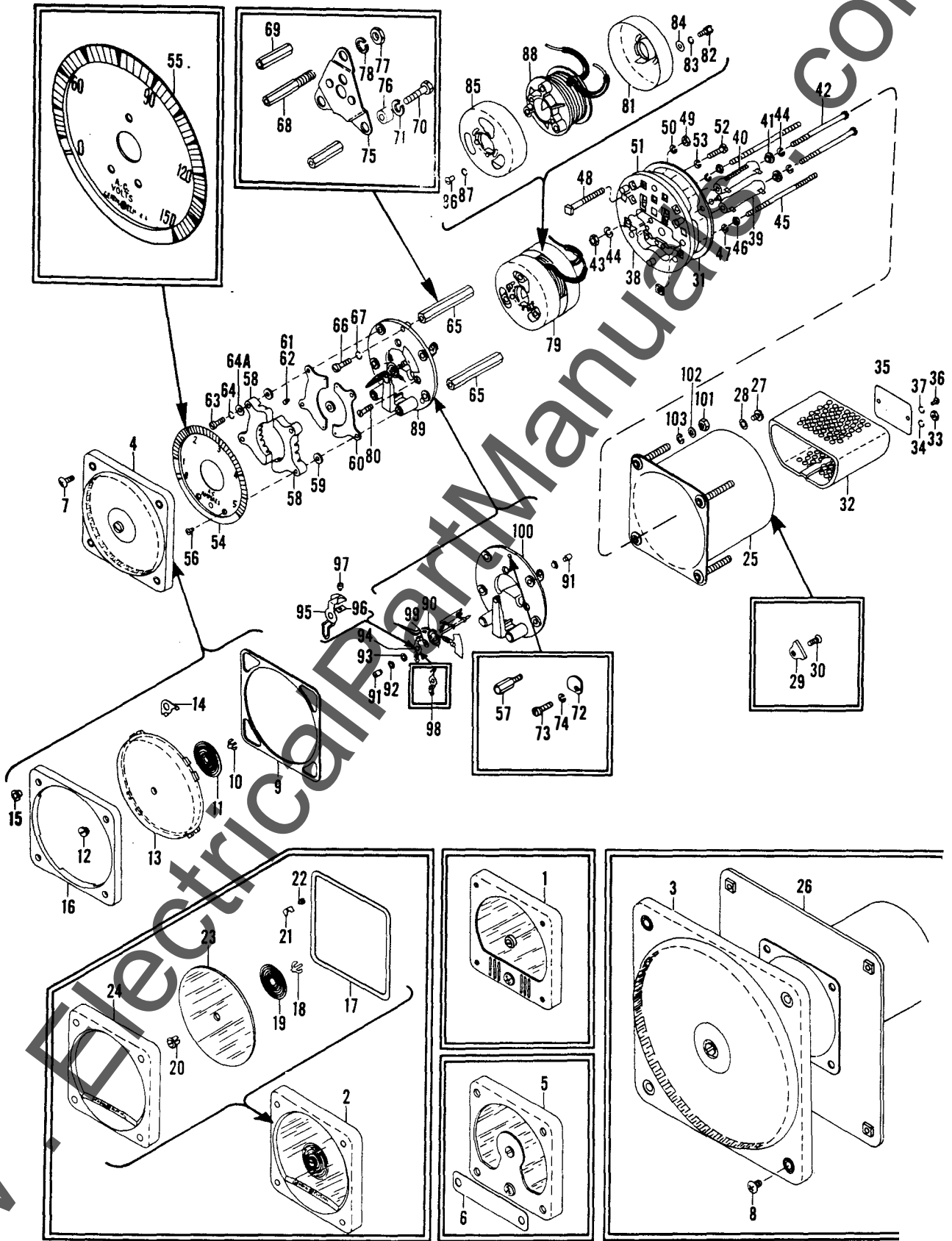
c 1 required per resistor

* Suggested if parts are stocked.

§ The base assembly shown is representative of those used. By following the ordering instructions on page 2, the correct base will be furnished.

Δ Clear or anti-glare glass must be specified when ordering.

† Registered trade mark of the General Electric Co.



(PHOTO 1125253)

TYPE AB AMMETERS AND VOLTMETERS

GEF-3

Ref. No.	Number Required for									Description	
	8AB14A	8AB14V	8AB15A	8AB15V	8AB16A	8AB16V	8AB18A	8AB18V	8AB19A		8AB19V
45		2		2		2		2		2	Stud for mounting resistor cage
46		2		2		2		2		2	*Nut for cage mounting stud
47		2		2		2		2		2	*Washer for cage mounting stud
48	d	d	d	d	d	d	d	d	d	d	*Terminal stud
49	d	d	d	d	d	d	d	d	d	d	*Nut for terminal stud
50	d	d	d	d	d	d	d	d	d	d	*Washer for terminal stud
51	1	1	1	1	1	1	1	1	1	1	*Base
52	1	1	3	3	3	3	3	3	3	3	Screw holding element posts to base (8-36 x 5/8 in.)
53	3	3	3	3	3	3	3	3	3	3	Washer for element stud screw
54	1	1	1	1			1	1	1	1	*Scale plate (specify black or white and marking)
55					1	1					*Scale plate (specify black or white and marking)
56	2	2	2	2	3	3	2	2	2	2	*Screw for scale plate
57					1	1					Scale support
58	2	2	2	2	2	2	2	2	2	2	Damping magnet (order right or left hand)
59	4	4	4	4	4	4	4	4	4	4	Spacing washer for damping magnet
60	2	2	2	2	2	2	2	2	2	2	Damping ring
61	1	1	1	1	1	1	1	1	1	1	Pointer stop, right hand
62	1	1	1	1	1	1	1	1	1	1	Pointer stop, left hand
63	4	4	4	4	4	4	4	4	4	4	Screw holding damping ring and magnet to frame (No. 6-40 x 11/16)
64	4	4	4	4	4	4	4	4	4	4	Lock washer for magnet screw
65			3	3					3	3	Element mounting post
					3	3	3	3			Element mounting post
66			3	3	2	2	3	3	3	3	Screw fastening element to post (No. 8-36 x 1/2 in.)
67	3	3	3	3	3	3	3	3	3	3	Washer for element mounting screw
68	1	1									Element mounting post for use with coil support
69	2	2									Element mounting post, short, for use with coil support
70	2	2									Screw for spacer (No. 8-36 x 1 1/16 in.)
71	3	3									Lock washer for spacer screw
72	3	3									Spacing washer for element
73	3	3									Screw for element washer (No. 8-36 x 9/16 in.)
74	3	3									Lock washer for element washer
75	1	1									Coil support
76	2	2									Spacer for coil support
77	2	2									Nut for coil support
78	1	1									Lock washer for coil support
79	1	1	1	1	1	1	1	1	1	1	*Field coil assembly
80	3	3	3	3	3	3	3	3	3	3	Screw holding field coil to frame (No. 6-40 x 1/2 flat hd)
81	1	1	1	1	1	1	1	1	1	1	Shield assembly, back
82	2	2	2	2	2	2	2	2	2	2	Screw holding back shield to coil
83	2	2	2	2	2	2	2	2	2	2	Lock washer for back shield screw
84	2	2	2	2	2	2	2	2	2	2	Washer for back shield screw
85	1	1	1	1	1	1	1	1	1	1	Shield assembly, front
86	2	2	2	2	2	2	2	2	2	2	Screw holding front shield to coil
87	2	2	2	2	2	2	2	2	2	2	Washer for front shield screw
88	1	1	1	1	1	1	1	1	1	1	Field coil, spool and winding
89	1	1	1	1			1	1	1	1	Frame and armature assembly complete (specify black or white pointer)
					1	1					Frame and armature assembly complete (specify black or white pointer)
90	1	1	1	1			1	1	1	1	*Armature assembly, including spring and balance weights (specify black or white pointer)
					1	1					*Armature assembly including spring and balance weights (specify black or white pointer)
		1	1	1	1	1	1	1	1	1	*Spring
		2	2	2	2	2	2	2	2	2	*Balance weight
91	2	2	2	2	2	2	2	2	2	2	*Jewel screw assembly
92	2	2	2	2	2	2	2	2	2	2	Clamping nut for jewel screw

d Quantity varies from 2 for standard instruments to 4 for multiple scale instruments.

* Suggested if parts are stocked.

WWW.ElectricalComponents.com

Ref. No.	Number Required for										Description
	8AB14A	8AB14V	8AB15A	8AB15V	8AB16A	8AB16V	8AB18A	8AB18V	8AB19A	8AB19V	
93	1	1	1	1	1	1	1	1	1	1	Spring washer for jewel screw
94	1	1	1	1	1	1	1	1	1	1	Spring regulator assembly
95	1	1	1	1	1	1	1	1	1	1	Regulator
96	1	1	1	1	1	1	1	1	1	1	Clamp for spring
97	1	1	1	1	1	1	1	1	1	1	Screw for spring clamp
98	1	1	1	1	1	1	1	1	1	1	Spring regulator
99	1	1	1	1	1	1	1	1	1	1	Washer
100	1	1	1	1	1	1	1	1	1	1	Frame
101	4	4	4	4	4	4	4	4	4	4	Nut for mounting screw (1/4 in. hex)
102	4	4	4	4	4	4	4	4	4	4	Lock washer for mounting screw
103	4	4	4	4	4	4	4	4	4	4	Washer for mounting screw

WHEN repairs to your G-E equipment are necessary, the use of genuine G-E renewal parts offers best assurance of continued dependable operation.

All G-E renewal parts are manufactured by the same methods as the parts in complete devices. They are identical with the original parts, except where, through research, improvements in design, materials, or manufacturing techniques have made possible even better quality. They are factory-inspected for precision of dimensions and adjustments. Whenever necessary, they are also given mechanical and electrical tests.

These refinements in manufacture mean ease of installation, low maintenance expense, and minimum investment in renewal-parts stocks.

Experience has shown that selection of renewal parts without investigating the quality of their design and materials may result in poor operation, high "out-of-service" losses, and increased expense of maintaining equipment.

To expedite shipments, the General Electric Company maintains factory and warehouse stocks of renewal parts. Also, to expedite repairs, the Company operates a nationwide chain of modern, well-equipped Apparatus Service Shops, on call night and day.

General Electric publishes renewal-parts bulletins and other helpful maintenance information, obtainable on request. For prompt renewal-parts service, consult your nearest G-E Apparatus Sales Office.

INSTRUMENT DEPARTMENT

GENERAL  **ELECTRIC**

WEST LYNN, MASS.