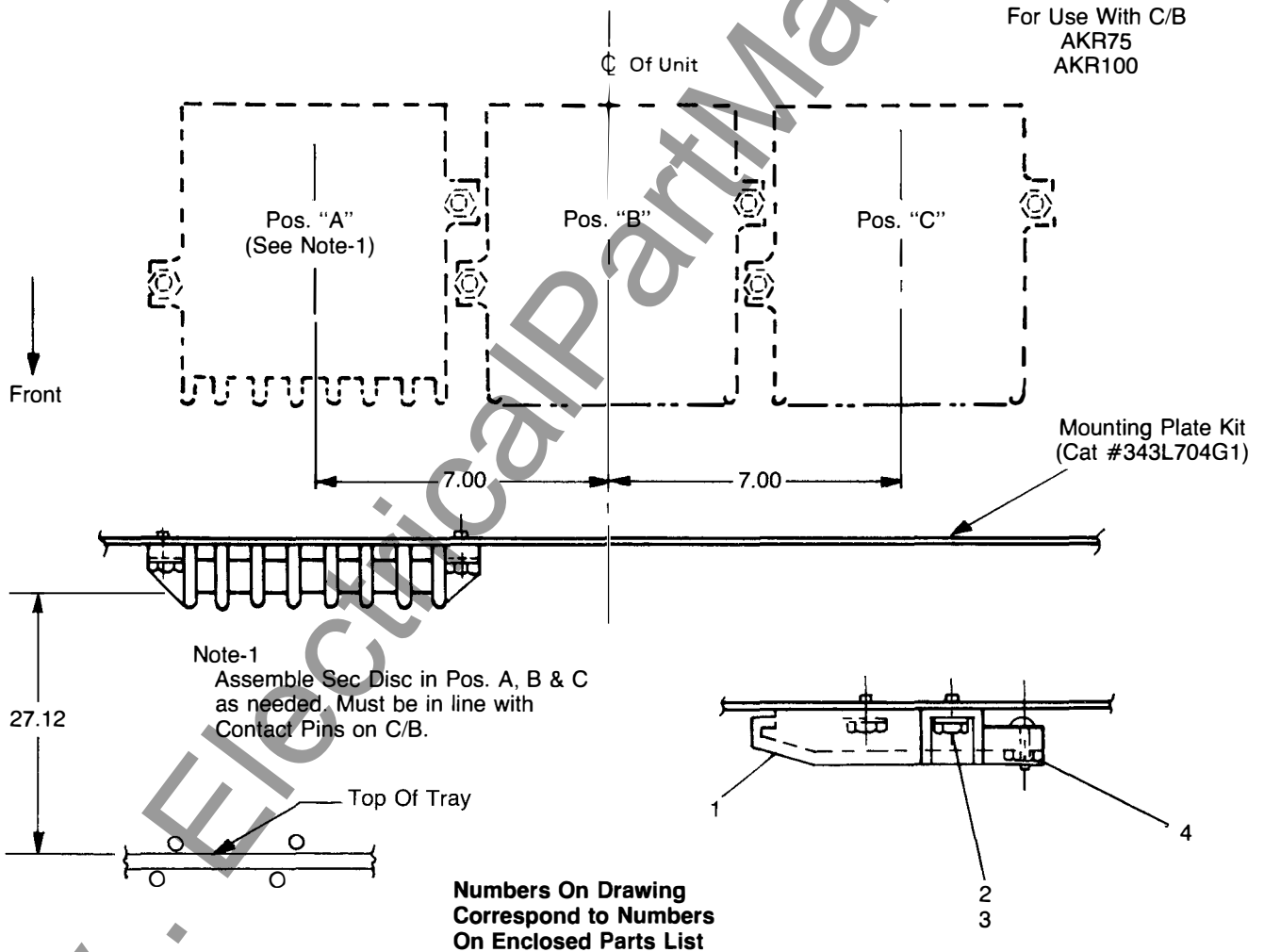


Installation
Instructions



Secondary Disconnect Kit

For AKR Substructure



These instructions do not purport to cover all details or variations in equipment nor to provide for every possible contingency to be met in connection with installation, operation or maintenance. Should further information be desired or should particular problems arise which are not covered sufficiently for the Purchaser's purposes, the matter should be referred to the General Electric Company. These instructions are intended for use by qualified personnel only.

For further information
call or write your local
General Electric
Sales Office or . . .

Distribution Equipment
Division
41 Woodford Avenue
Plainville, CT 06062

www.ElectricalPartManuals.com