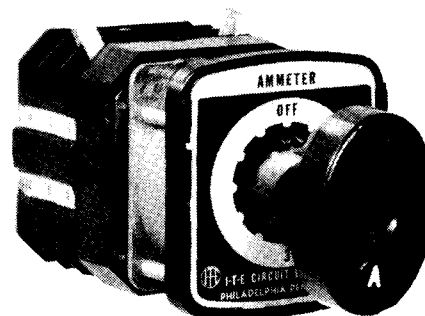
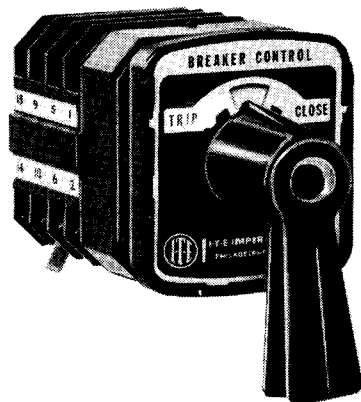




C77™ CONTROL AND INSTRUMENT SWITCHES
DESCRIPTION



High quality and dependability are featured in the C77 instrument and control switches. A complete line is available for use in conjunction with control of circuit breakers, transformer tap changers, and for all types of electrical instruments, relays, meters and for performing other various circuit combinations.

The switches are rated for 40 ampere continuous duty 600 volt ac insulation and with mechanical life for the switch of 500,000 operations.

Table A describes the interrupting rating of the C77 switch in two manners. One is the non-inductive circuit and the other is the inductive circuit. The interrupting ability is shown for 24 volts to 600 volts dc and 115 volts to 550 volts ac.

The C77 instrument and control switches are available with either maintained or spring return contact types. They

are for panel mounting--thickness ranging from 3/32" to 1/4".

Handles are available for the purpose of indexing from one (1) to twelve (12) positions for maintained circuits or for operating a switch to one of two positions with a spring return to normal position.

The handles for the C77 switch are made of extremely durable shock-resistant material. The general application for the various types of handles available are as follows:

1. Pistol Grip--Circuit-Breaker Control Switch (Spring Return to Normal)
2. Round Knurled--Meter Switch
3. Oval Non-Removable--General Purpose
4. Oval Removable--Synchronizing Switch

PRICES

C77 CONTROL AND INSTRUMENT SWITCHES

Switch	Number of Stages	Catalog Numbers	Figure Number	Description	List Price
Breaker Control Switch	1	C77-1001-1CC1-0002	—	2 Position—Fixed Pistol Grip Handle	\$25.00
Breaker Control Switch	2	C77-2000-1CC1-0002	1	2 Position—Fixed Pistol Grip Handle	27.50
Breaker Control Switch	4	C77-4000-1CC1-0002	22	2 Position—Fixed Pistol Grip Handle	34.00
Ammeter Switch	2	C77-2001-2002-4002	3	4 Position—Fixed Knurled Handle	27.50
Ammeter Switch	2	C77-2005-4AC2-4005	—	2 Position—Fixed Knurled Handle	27.50
Ammeter Switch	3	C77-3000-3AJ2-3003	5	6 Position—Fixed Knurled Handle	31.00
Ammeter Switch	5	C77-5000-2AN2-4002	4	4 Position—Fixed Knurled Handle	38.00
Selector Switch	4	C77-4001-4002-4001	8	8 Position—Fixed Knurled Handle	34.00
Voltmeter Switch	2	C77-2002-6EA2-3001	6	4 Position—Fixed Knurled Handle	27.50
Voltmeter Switch	2	C77-2006-6AE2-3004	—	4 Position—Fixed Knurled Handle	27.50
Voltmeter Switch	3	C77-3001-6EE2-3002	7	7 Position—Fixed Knurled Handle	33.50

Prices subject to change without notice. Conditions of sale and general policy — see Section A.1.5.1 of Product Catalog

37397
 37394



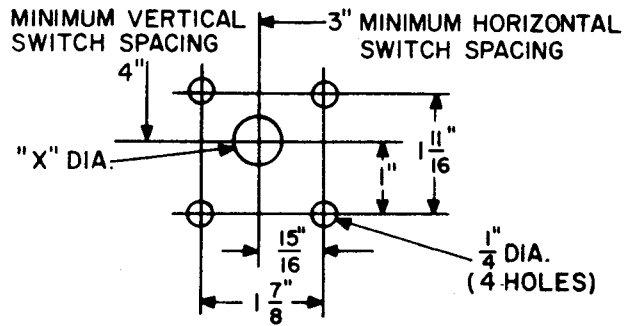
C77 CONTROL AND INSTRUMENT SWITCHES
DESCRIPTION

TABLE A

INTERRUPTING RATINGS OF SINGLE CONTACTS		
Control Voltage	Non-Inductive Amperes	Inductive* Amperes
24 V dc	10.	8.
48 V dc	8	6.
125 V dc	5.	4.
250 V dc	1.	1.
600 V dc	0.25	0.25
115 V ac	40.	24.
230 V ac	25.	15.
480 V ac	15.	10
550 V ac	8.	6.

* Average trip circuit inductance

C77 MOUNTING TEMPLATE



FIXED HANDLE "X" = 1/2" MIN. 1 3/16" MAX.

REMOVABLE HANDLE "X" = 1 1/8" MIN. 1 1/4" MAX.

DIMENSION "X"

No. of Stages	1	2	3	4	5	6	7	8	9	10	11	12 Max.
Fixed Handle	2 1/4	2 3/4	3 1/4	3 3/4	4 1/2	5	5 1/2	6 1/4	6 3/4	7 1/4	7 3/4	8 1/4
Removable Handle	3 3/8	3 3/4	4 1/8	4 3/8	5 1/8	5 3/8	6 1/8	6 3/8	7 1/8	7 3/8	8 1/8	9 1/8

