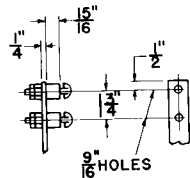


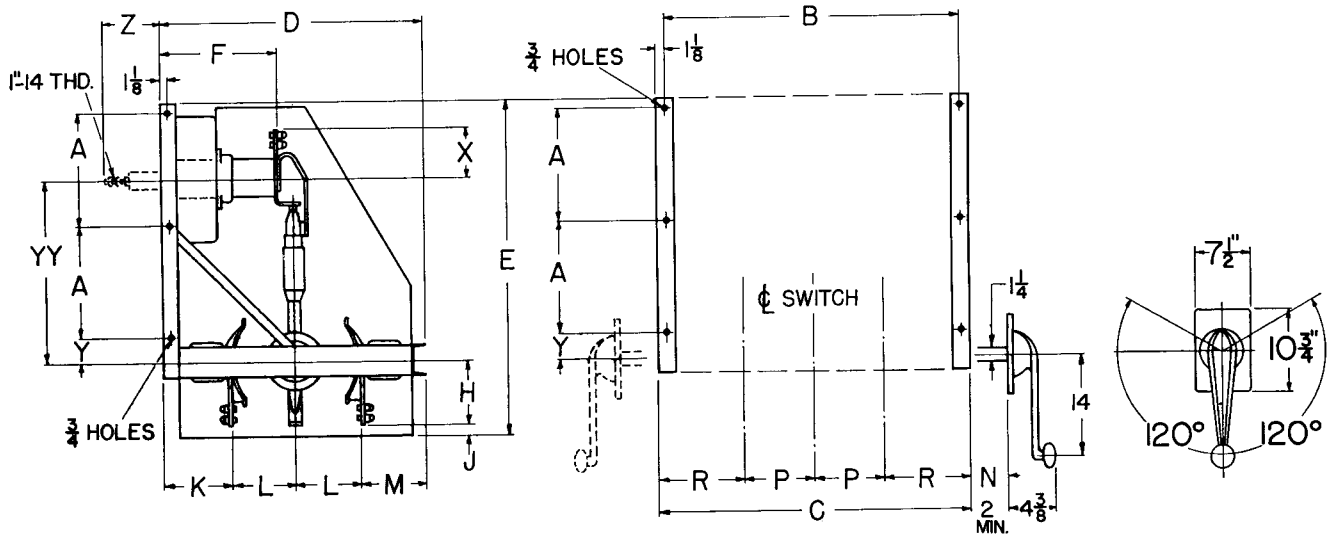


**DIMENSIONS**

**LD - FRAME MOUNTED**  
**THREE POLE, DOUBLE THROW**  
**4.8, 7.2 AND 13.8 KV**  
**600 AMPERES CONTINUOUS AND**  
**LOAD INTERRUPTING**

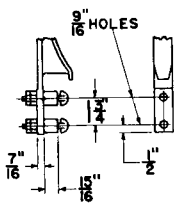


Top Terminal



Front View

Note: N dimension must be specified when ordering



Bottom Terminal

Ratings		Cat. No.	Sw. Net Wt.	DIMENSIONS IN INCHES FOR REFERENCE ONLY																
KV	Amp			A	B	C	D	E	F	H	J	K	L	M	P	R	X	Y	YY	Z
4.8	600	LD-5-6	340	11	25 1/4	27 1/2	28 3/8	36 1/2	13 5/8	7 3/4	2 1/4	7 1/2	6 3/8	5 1/2	6 1/2	7 1/4	7	3	19	6 3/4
7.2	600	LD-7-6	340																	
13.8	600	LD-15-6	555	13 1/2	37 3/8	39 5/8	34 3/8	43 1/2	16 3/8	8 3/8	3 3/8	8 3/4	8 3/8	6 3/4	9 3/4	10 1/8	7	3	24	8 1/4

Dimensions subject to change without notice

I-T-E CIRCUIT BREAKER COMPANY

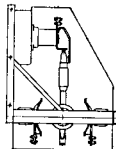
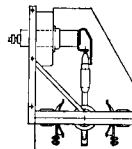
Printed in U.S.A.

Supersedes Page 2, Section 1621, dated December 30, 1963



**NET PRICES**

**LD PLUNGER TYPE  
FRAME MOUNTED  
THREE POLE, DOUBLE THROW  
4.8, 7.2 AND 13.8 KV  
600 AMPERES CONTINUOUS AND  
LOAD INTERRUPTING**

Insulator Arrangement	Nominal Voltage, kV	Withstand Voltage, kV		Three-Pole Switches	
		60 Cycle	BIL	Cat. No.*	Price
Front Connected 	4.8	19	60	LD- 5-6	\$1683.
	7.2	26	75	LD- 7-6	1760.
	13.8	36	95	LD-15-6	2002.
Back Connected 	4.8	19	60	LD- 5-6B	1787.
	7.2	26	75	LD- 7-6B	1886.
	13.8	36	95	LD-15-6B	2134.

\*Supplied with operating handle on right hand side unless otherwise specified. Dimension N must also be specified, see Page 1, Section 13.1.2.2.

**PRICES LISTED INCLUDE:**

1. Complete three-pole, frame-mounted units with interphase barriers.
2. Terminal lugs for cable up to 500 MCM only if specified on order.
3. Direct side-operating handle with provision for Kirk key interlock.  
Order B $\frac{3}{8}$ E interlock, mounting charge \$13.00

Prices subject to change without notice.  
Terms—Net 30 days, f.o.b. Greensburg, Pa., freight allowed.