

Open Style 200 Ampere 5.0kV MINI-BREAK Load Interrupter Switch

CONTENTS

Description	Class	Pages
General Ratings.....	9875 2
Open Type Switch.....	9875 3
Not-Fusible Upright Switch Dims.....	9875 4
Fusible Upright Switch Dims.....	9875 4
Construction Details.....	9875 5-6
Suggested Specifications	9875 7



SQUARE D COMPANY

MINI-BREAK

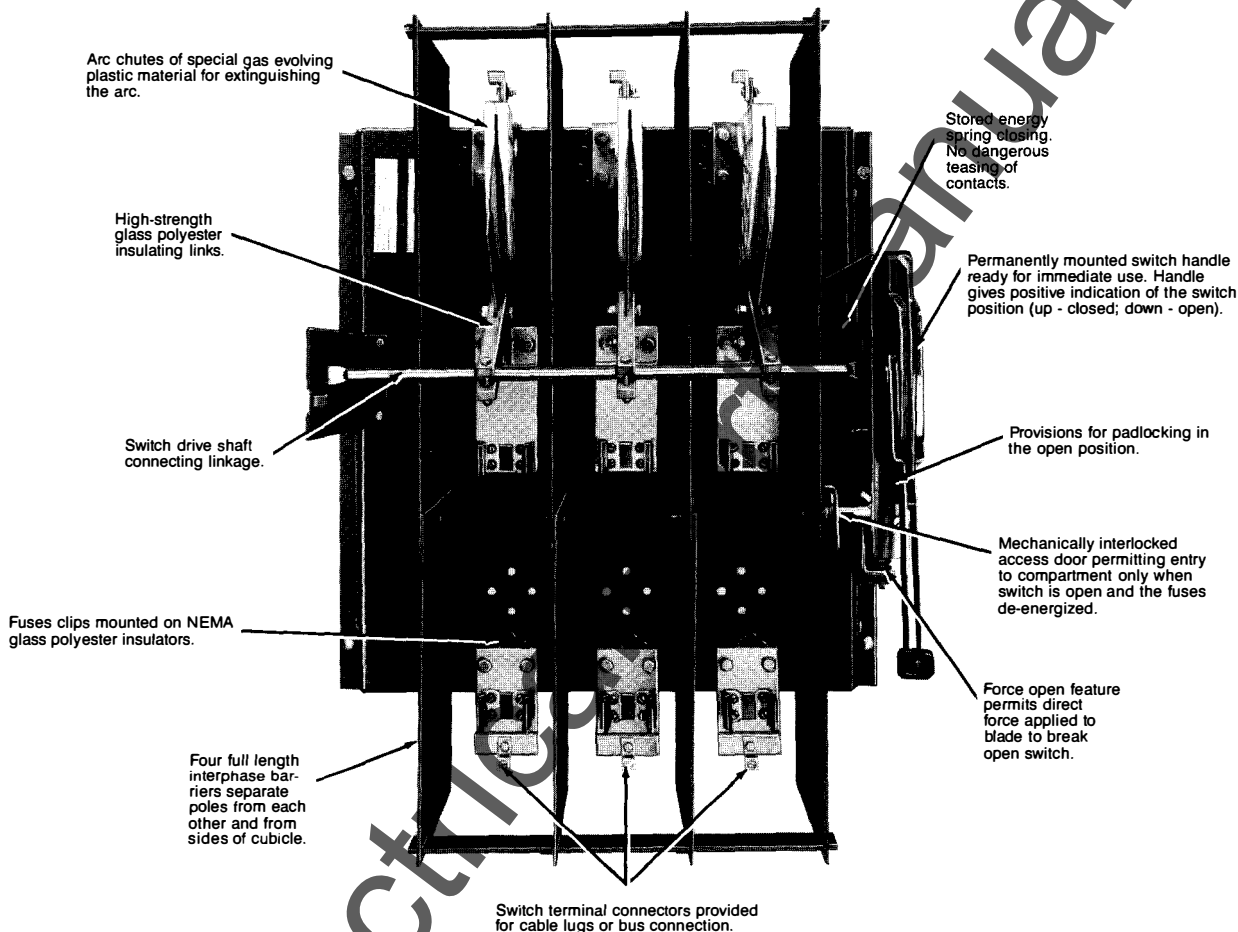
Load Interrupter Switch

JUNE, 1984

DESCRIPTION

Square D Open Style Mini-Break load interrupter switches are designed for use on 4.16 KV power distribution systems. They function as a prime component in the system providing switching and over-current protection for the high voltage circuits. These switches are

frequently used in service entrance equipment, unit substations or for sectionalizing high-voltage feeder systems. The switch is single throw and is rated for 200 amperes continuous current and 200 amperes contact interrupting capacity.



- 5.0 KV-60 KV BIL
- 200 Amperes
- 2 and 3 Pole
- 20,000 Asymmetrical Ampere Momentary (10 cycles)
- 12,000 Amperes RMS Short-Time (1 second)
- Fusible
- Not Fusible
- Upright Unit Only

CURRENT LIMITING FUSES

- Fast-acting to limit available fault current stresses on the system
- Silent operation
- Sealed for consistent characteristics
- High-interrupting capacity
- Positive indication of blown fuse



MINI-BREAK

Load Interrupter Switch

CLASS
9875

FRONT CONNECTED LINESIDE AND LOADSIDE

▲ NOT-FUSIBLE
TABLE 1

Voltage Rating	Catalog Number
50 KV	HVMO305000J

▲ FUSIBLE (PROVISIONS ONLY)
TABLE 2

The Following 5kV Current Limiting Fuses Can Be Used With These Devices

Catalog Number	Fuse Size	Buss	G. E.	Fuse Dimensions			G. E.	Fuse Dimensions		
				Size	Dia.	Ctrs.		Size	Dia.	Ctrs.
HVMO-305025	.5E	JCY .5	9F60CED905	C	2.00"	9.00"	9F60DJD905	C	2.00"	12.00"
	1E	1	001				001			
	2E	2	002				002			
	3E	3	003				003			
	5E	5	005				005			
	7E	7	007				007			
	10E	10	010				010			
	15E	15	015				015			
	20E	20	020				020			
		25E	25	025				9F62HCB025		
HVMO-305200	30E	30	9F60FJD030	D	3.00"	12.00"	030	C	2.00"	12.00"
	40E	40	040				040			
	50E	50	050				050			
	65E	65	065				065			
	60E	80	080				9F62DCB080	D	3.00"	12.00"
	100E	100	100				100			
	125E	125	9F60HJD125	DD	3.00"	12.00"	125			
	150E	150	150				150			
	200E	200	200				200			

▲ Not available as an inverted switch



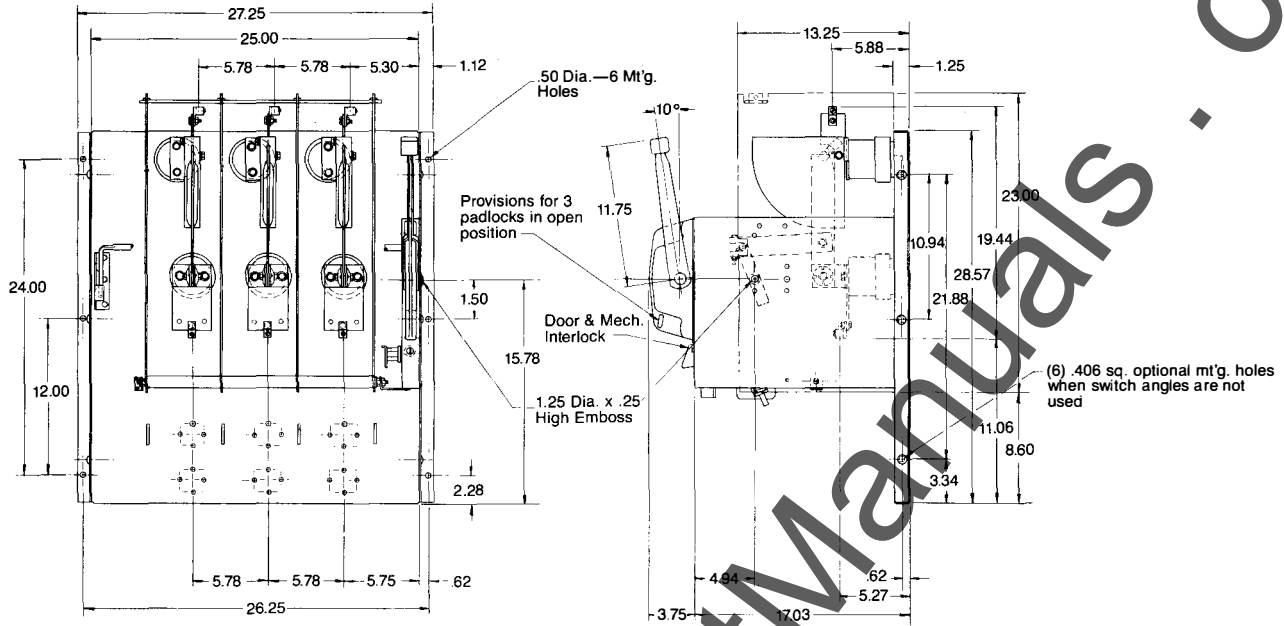
MINI-BREAK

JUNE, 1984

Load Interrupter Switch

NOT-FUSIBLE UPRIGHT SWITCH

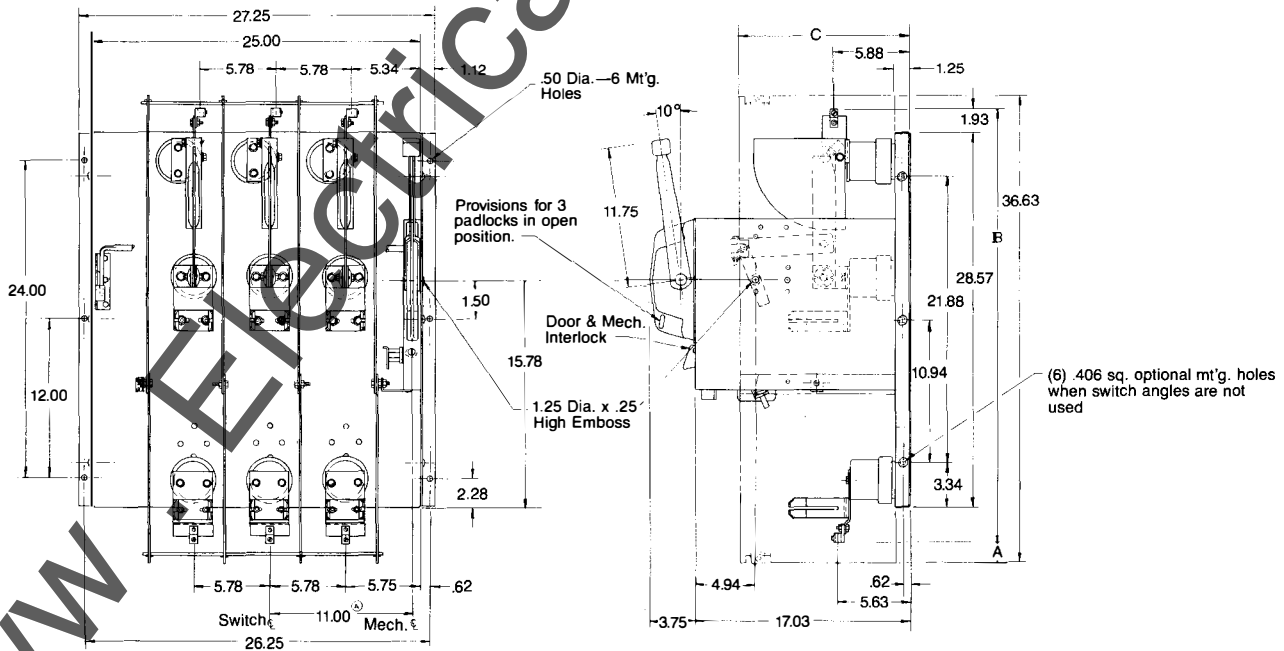
DIMENSIONS



FUSIBLE UPRIGHT SWITCH

DIMENSIONS

Catalog No.	Mf'g. No.	A	B	C	Fuse Type	Cont. Amp.	Size	Clip Centers
HVMO-305025	44070-575-50	5.29	30.24	13.25	EJ-1	0.5E-25EC	9.00	
HVMO-305025	44070-575-50	2.29	33.24	13.25	EJO-1	0.5E-25E	C	12.00
HVMO-305200	44070-575-51	2.29	33.24	13.25	EJO-1	30E-200E	D & DD	12.00

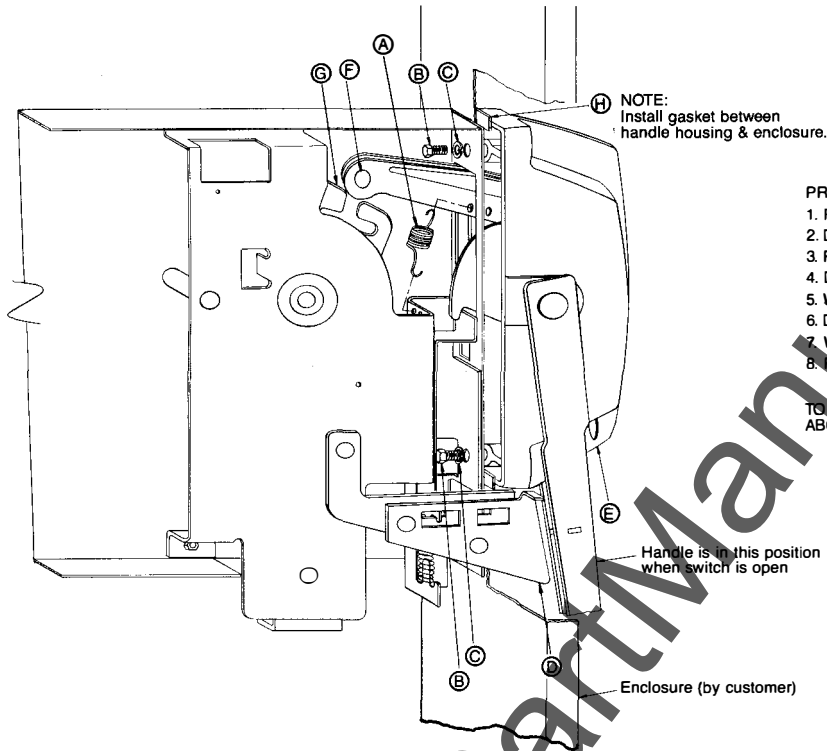


MINI-BREAK

Load Interrupter Switch

CLASS
9875

CONSTRUCTION DETAILS



NOTE:
Install gasket between
handle housing & enclosure.

PROCEDURE FOR REMOVING HANDLE ASSEMBLY

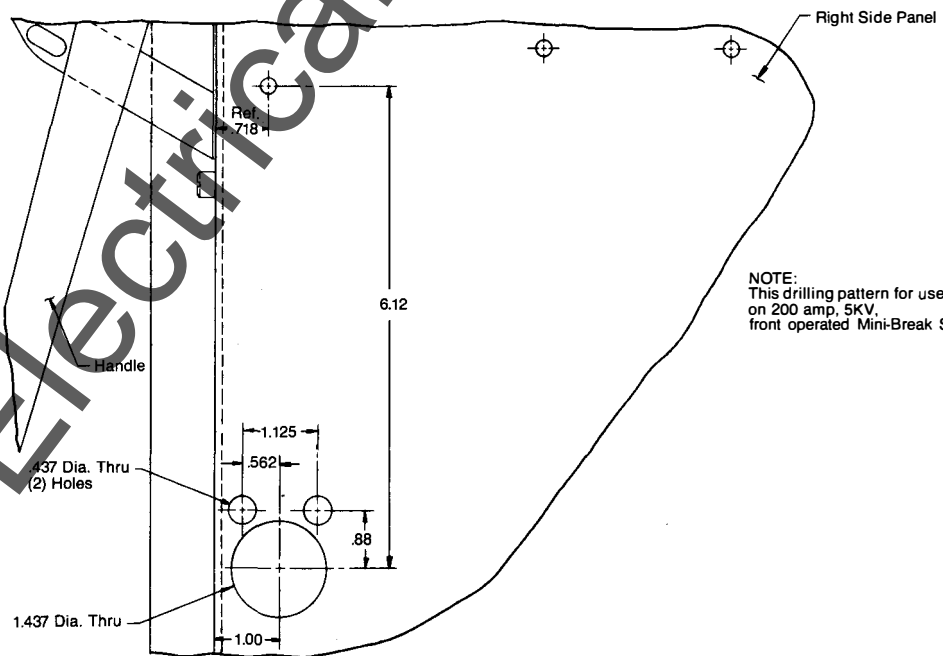
1. Put switch in open position—(handle down)
2. Disconnect spring (A)
3. Remove bolts (B) & lockwasher (C)
4. Depress lever (D)
5. Withdraw handle ass'y (E) approx. 1/2 inch
6. Disengage pin (F) from cam (G)
7. Withdraw handle ass'y completely
8. Remove handle housing gasket (H)

TO INSTALL HANDLE ASSEMBLY, REVERSE
ABOVE PROCEDURE.

Handle is in this position
when switch is open

Enclosure (by customer)

PANEL CUTOUT AND DRILLING FOR KEY INTERLOCK



NOTE:
This drilling pattern for use
on 200 amp, 5KV,
front operated Mini-Break Switches.



MINI-BREAK

Load Interrupter Switch

CLASS
9875

SUGGESTED SPECIFICATIONS

Load interrupter switches—200 amperes, single throw, 3 pole, load-break.

Furnish and install Minibreak switches as indicated on the plans and specifications.

a. **Switch Interior**

All switches shall have switch blades which are visible in the OFF position when the enclosure door is open or closed. Switch contact shall be made by movable blades incorporating silver tungsten arcing contacts for load-break operation. Lugs shall be suitable for copper or aluminum cables. All current carrying parts shall be silver plated. Fusible devices shall have provisions for current limiting fuses only having ratings up to 200 amperes.

b. **Switch Mechanism**

Front-manually operated, fusible and non-fusible switches rated 200 amperes or less shall have a quick-make, quick-break operating mechanism. The switch handle shall have provisions for padlocking in the OPEN position only.

A mechanical interlock shall be provided to prevent opening the door with the switch closed or closing the switch with the door open.

Provisions for key interlocking the switch mechanism in the open position shall be available.

d. **Ratings**

Switches shall be rated at 60 Hz, 5 KV and fusible devices shall be capable of being fused from 0.5 through 200 amperes. Switches shall be capable of carrying 200 amperes continuous current and shall load-break 200 amperes. The momentary rating is 20,000 Amps. ASYM. The fault closing rating of fusible devices shall be 40,000 asymmetrical amperes, with current limiting fuses. Without current limiting fuses, the fault close rating is 20,000 Amps. ASYM. The switches shall have a power frequency withstand rating of 19 KV and have a basic insulation level (BIL) of 60 KV.



www.ElectricalPartManuals.com



SQUARE D COMPANY