



switchgear
devices

disconnecting switches

indoor • types LC, LCG and LCB

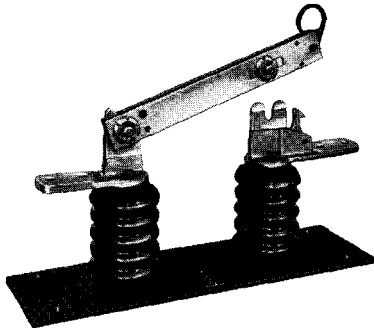
descriptive
bulletin

36-150

page 1

2.4 to 34.5 kv • 200 to 6000 amperes • single
or double throw • hookstick or group operated

type LC



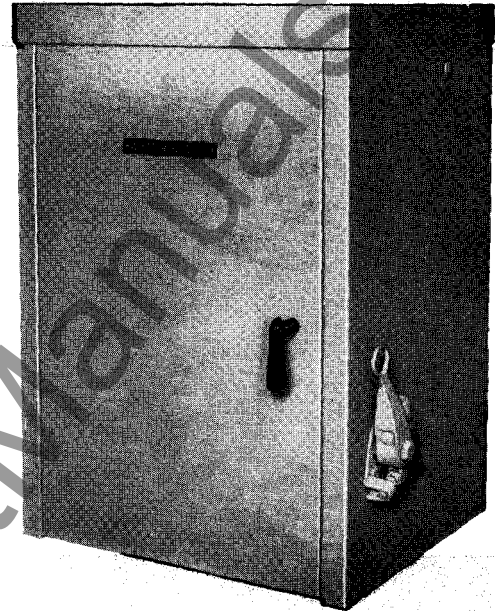
hookstick operated

type LCG



group operated
pole unit

type LCB



application

Types LC and LCG are used as plain disconnects to isolate apparatus, and may be arranged for hookstick or group operation. For separate operation, type LC switches are single pole and hookstick operated; for group operation, the type LCG switch may be 1, 2, 3, 4, 5 and 6 poles, and operated by a single operating handle.

Type LCB interrupter switches are an adaptation of the "De-ion" arc quenching principle to the standard type LC indoor disconnecting switch, to provide load interrupting ability. They provide safe, non-automatic switching for sectionalizing primary feeders, and isolation for transformer banks, capacitors, voltage regulators and similar applications. When used in series with Westinghouse boric acid power fuses, the combination also provides fault protection.

advantages

multiple-line contacts: Pure silver contacts remain self-cleaning and self-aligning after thousands of operations. A $\frac{3}{8}$ inch movement separates contacts—easy to open because of sled-runner action.

parallel blade design: Increased contact pressure under short-circuit conditions because magnetic action draws blades together.

no corrosion of parts: All parts except the silver contacts are made of corrosion resisting materials coated with a corrosion resisting lacquer.

BIL insulators: NEMA standard, meeting the requirements of basic impulse insulation levels (BIL).

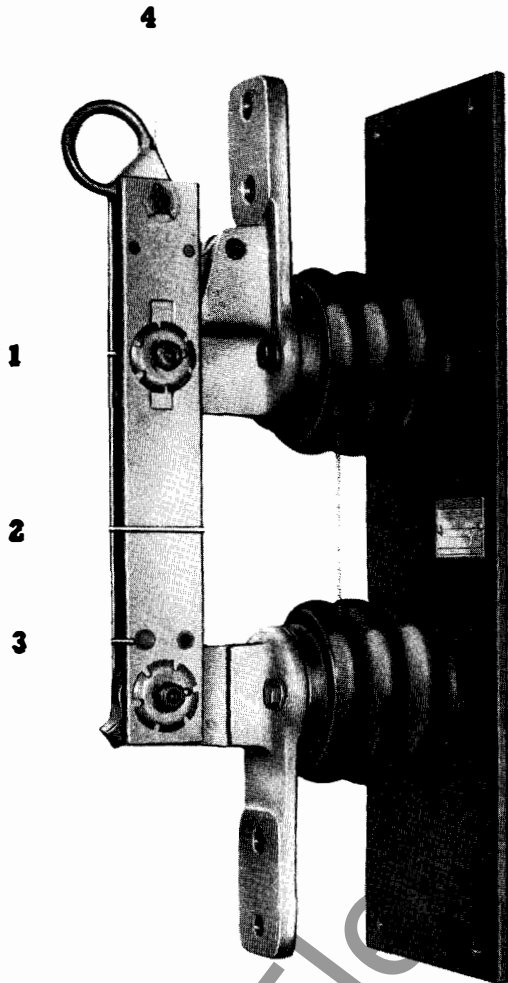
no distortion of mounting base: Rigid base helps eliminate effects of uneven mounting surface and supports disconnect parts in accurate alignment.

September, 1958

supersedes db 36-116 dated March 1951 and db 36-117 dated September 1952
mailed to: E/290,291/CS,DB; D64-5E; C28-5E



design features types LC and LCG



1 "multiple-line" silver contacts

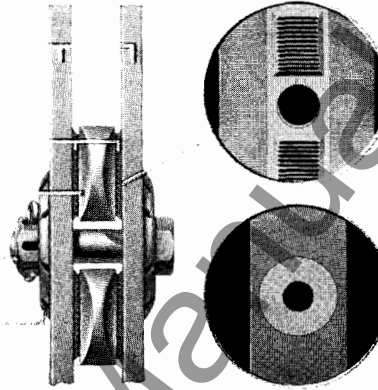
blades

contacts

jaw block

castellated nut

spring washer



Inside blade contact area showing the silver multiple-line contacts which maintain pressure against the jaw blade.

Silver ring hinge contact insures proper electrical contact at this moving point.

Positive high-pressure contact is maintained by the design principle of "multiple-line" contacts. These consist of a contact area of fine parallel ridges or "teeth" of pure silver on each switch blade. When the switch is closed, this produces a series of "knife-edge" or high-pressure line contacts.

self-cleaning action prevents galling

Action of the switch forces any dirt into the spaces between the ridges or lines, keeping the contact lines clean and eliminating maintenance. A highly efficient electrical contact is established and dirt cannot cause galling.

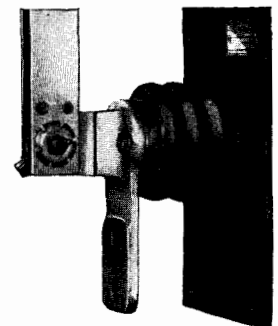
contact pressure is maintained by self-adjusting washers

To insure permanent high-contact pressures, the LC is equipped with self-adjusting spring washers of beryllium copper which provides needed flexibility in meeting stresses from distortion due to load, or from uneven mounting. These are factory adjusted. Castellated nuts lock adjustment against vibration or tampering. This type of construction eliminates the need for adjustment either during or after installation.

2 BIL insulators

The insulators used on types LC and LCG disconnecting switches meet basic impulse insulation levels (BIL) and standardization of heights, diameters and strengths permit interchangeability between Westinghouse apparatus and even between apparatus of a different manufacturer.

2500-volt switches rated 1200 amperes or less are supplied with Moldarta insulators and metal bases. On switches rated 5000 volts and above, porcelain insulators in any NEMA strength class can be furnished. These insulators are made of wet process porcelain.



disconnecting switches

indoor • types LC, LCG and LCB

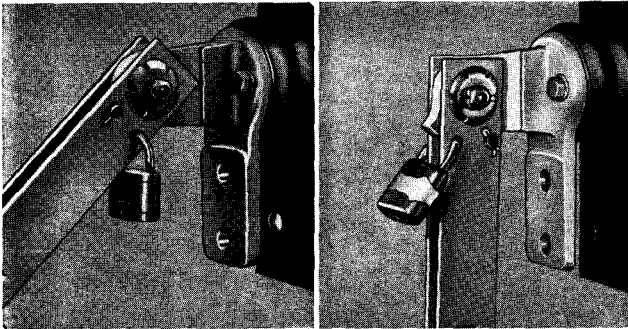
2.4 to 34.5 kv • 200 to 6000 amperes • single or double throw • hookstick or group operated

descriptive bulletin

36-150

page 3

3 blade stop and lockout



Vertically mounted switch open, showing blade stop in 135° position, and padlocked to prevent closing.

Vertically mounted switch padlocked open, in 180° position.

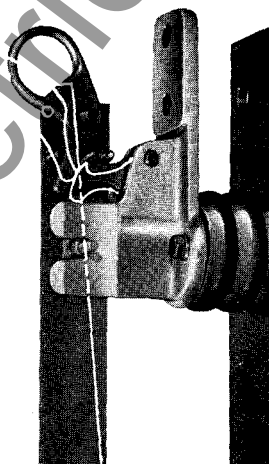
A simple, removable locking pin provides a 3-position safety blade stop on all single throw switches. When placed in one of two holes in the blade at the hinge end, the pin strikes a shoulder on the hinge block as the switch is opened, stopping the blade in a 90-degree position. Placed in the second hole the pin stops the blade in a 135-degree position. Used on single throw type LC only.

When the blade opens in a 180-degree position, the pin can be put into either of the holes where it serves as a lock, striking the shoulder and preventing the switch from being closed, thus locking it open. Type LC switches can be pad-locked in either 135-degree or 180-degree position.

Either friction-type or latch-type 90-degree blade stops can be supplied on double throw switches when specified.

4 positive latch

The LC disconnecting switch cannot blow open under short circuit—it is positively latched in place. The blade cannot open until the latch is actuated by the hook eye lever. Regardless of the mounting position of the switch, the action of the large offset hook-eye is multiplied by cam action, easily prying the blades completely free. When closed, a blade latch anchored in the one-piece jaw block, securely locks the blades. The latch consists of only two sturdy bronze castings with a generous catching surface.

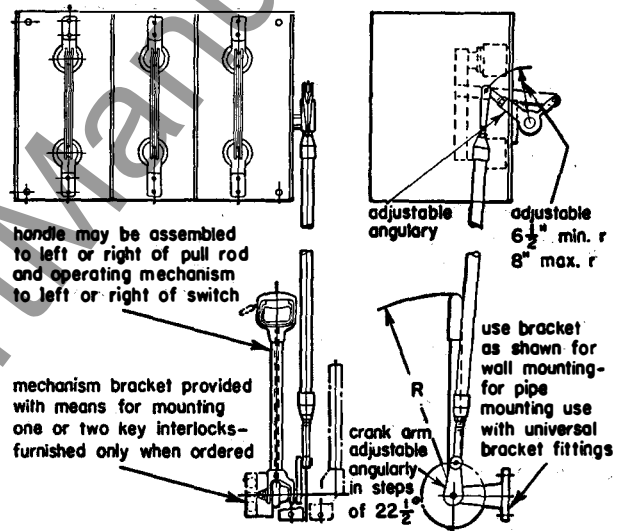


Lever action prys blade completely free. Note strong latch consisting of only two sturdy bronze castings. Switch is shown vertically mounted. Used on type LC only.

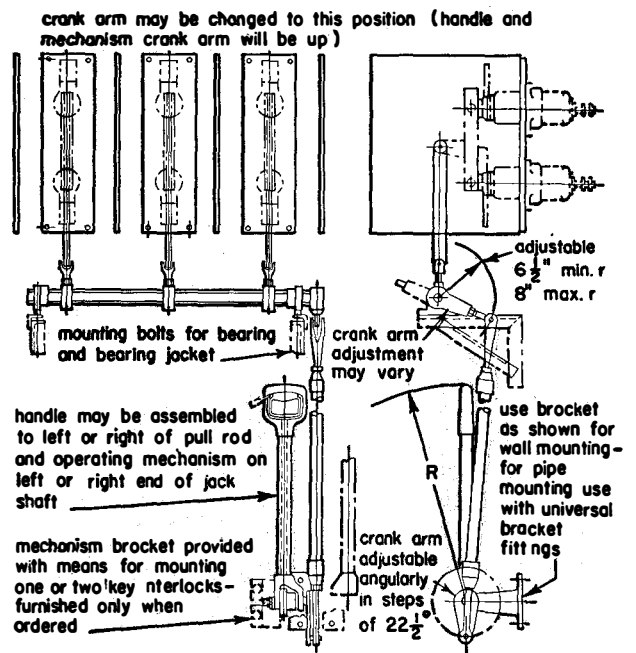
switch operating mechanism

Operating mechanism can be provided for group-operated Type LCG pole units. The drawings below show group-operated (Type LCG), three-pole single-throw, front connected disconnecting switches with manual operating mechanism and insulating barriers.

with common base

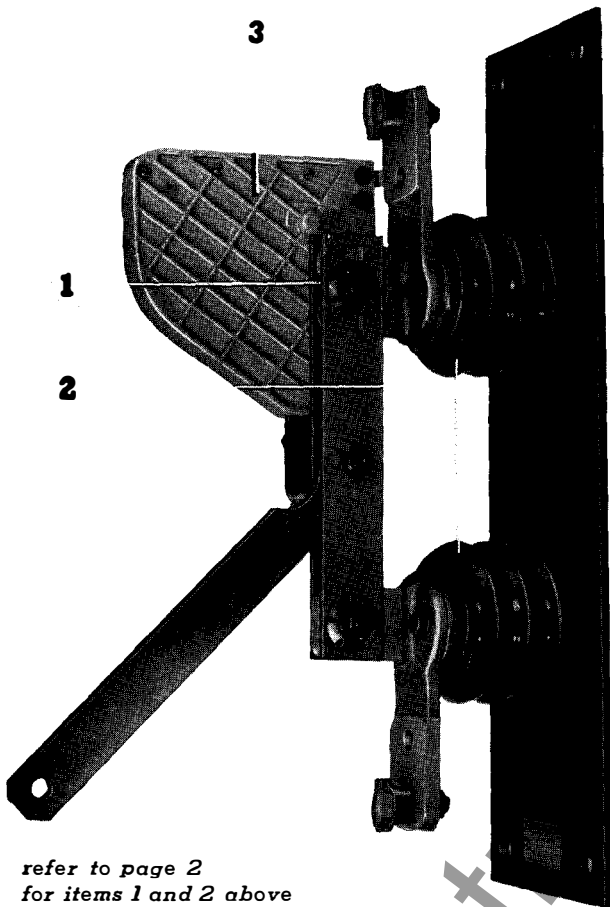


with individual bases





design features **type LCB**



refer to page 2
for items 1 and 2 above

ratings

switch rating—continuous			system voltage	60-cycle interrupting rating—amps
amperes	new kv rating	BIL impulse withstand kv		
600	4.8	60	4800	600
600	7.2	75	7200	600
600	13.2	95	13200	600
600	14.4	110	14400	600
600	23▲	150	23000	250

▲ Not available in enclosures.

3 De-ion chamber operation

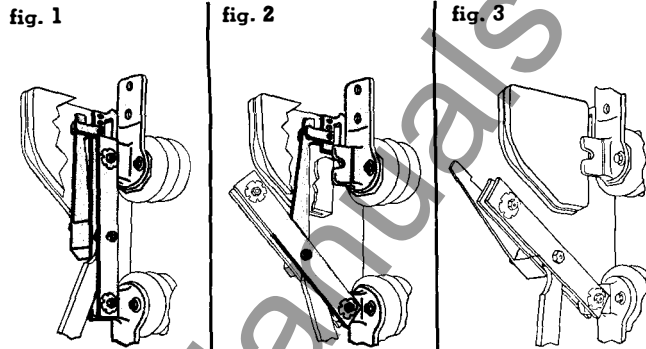
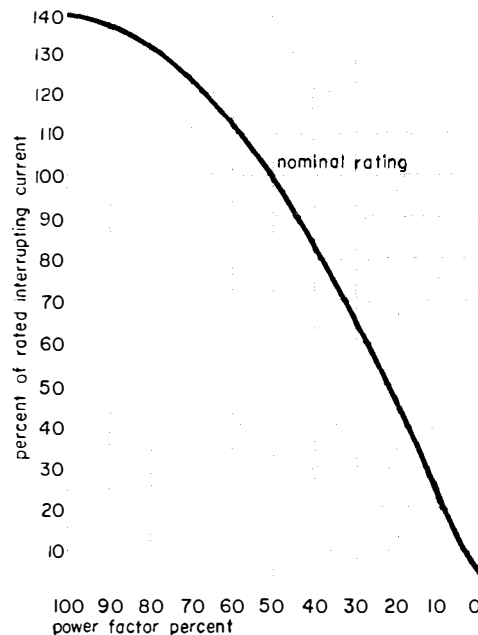


fig. 1: switch closed . . . When the switch is closed, practically all the current flows through the main blade.

fig. 2: main blade opens . . . As the contact on the main blade separates, current is transferred momentarily to the quick-break blade, which is maintained to the circuit by the high-pressure contact fingers in the arc chute.

fig. 3 quick-break blade opens . . . The main blade opens until stop on quick-break blade hinge prevents further angular movement between main and quick-break blades. This starts quick-break blade out of contacts in arc chamber. The additional pull of a torsional spring snaps the quick-break blade into open position at high speed—regardless of the speed with which the disconnecting blade is pulled. The heat of the arc, meanwhile, releases a blast of de-ionizing gas from the gas-generating lining of the arc chamber. This combination of quick-break and De-ion action quickly extinguishes the arc and the circuit is safely de-energized.

performance



disconnecting switches

indoor • types LC, LCG and LCB

2.4 to 34.5 kv • 200 to 6000 amperes • single or double throw • hookstick or group operated

descriptive
bulletin

36-150

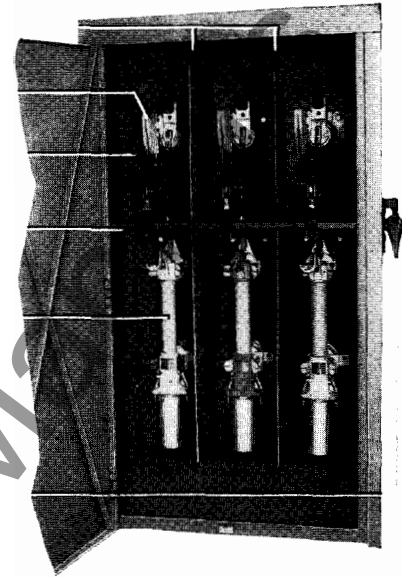
page 5

enclosures type LCB



unfused

a
b
c
d
e
f



fused

Westinghouse type LCB switches can be furnished as double or triple-pole units, group operated, for wall mounting. Cable entrances other than knockouts for conduit can be furnished on request:

1. through-type porcelain bushing
2. stud-type porcelain bushing
3. single or three-conductor potheads

a barriers between phases and Micarta links from the main switch blade to the group operating shaft provide complete insulation between phases and to ground.

b De-ion arc chutes

c main blade

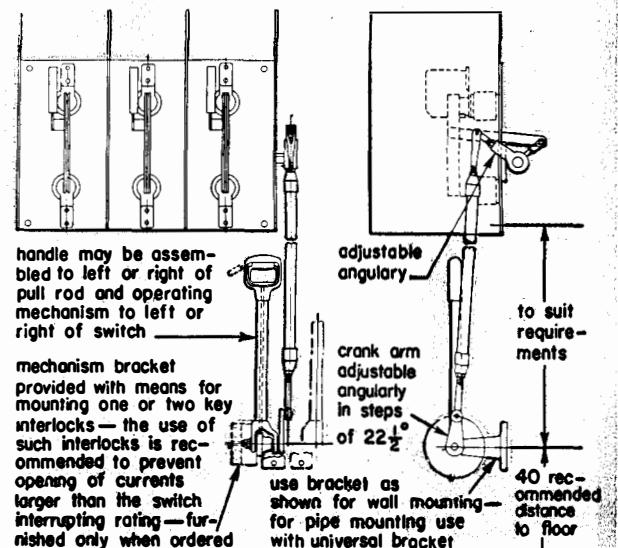
d operating lever and hexagon shaft design permit changing lever position for operation from twelve different angles. Lever is easily changed in field to opposite side of cabinet.

e power fuses: Westinghouse type BA boric acid power fuses can be connected in series with the type LCB load interrupter switch to furnish high capacity short-circuit protection. This BA-LCB combination answers the need for an inexpensive circuit load interrupting device that will protect the system on short circuits. Such an installation is particularly suitable with a bank of transformers when fuse protection is desired and when it is necessary to disconnect the bank under load. Illustration shows how LCB switch and BA fuse have been mounted together in a single enclosure.

f dual purpose handle permits direct hand or remote hookstick operation. Holes are provided for padlocking.

remote operation

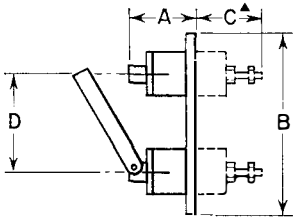
Where desired, open-type remote group-operated LCB switches will be provided for operation with manual operating mechanism. The pole units and barriers are mounted at same height, and operated from a conveniently mounted manual mechanism. Switches are front connected.



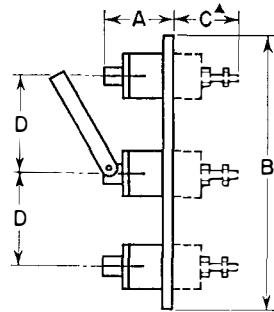


dimensions in inches type LC^A • single pole

single throw



double throw



code

- SA • single throw hook front connected
- SC • single throw hook two outside units back connected
- SE • single throw hook one upper unit back connected
- SH • single throw hook one lower unit back connected
- DA • double throw hook front connected
- DB • double throw hook center unit back connected
- DC • double throw hook two outside units back connected
- DD • double throw hook all back connected
- DE • double throw hook one upper unit back connected
- DF • double throw hook two upper units back connected

▲ for rear connected only

type	kv BIL	amp	LC style number	A	B	C	D
------	-----------	-----	--------------------	---	---	---	---

single throw • A-10 insulators

SA	2.4	200	1525 000	5	19	7
		400	1525 001	5 ⁹ / ₁₆			
		600	1525 002	5 ⁹ / ₁₆			
		1200	1525 003	6 ¹ / ₈			
SH	2.4	200	1525 004	5	19	5 ³ / ₈	7
		400	1525 005	5 ⁹ / ₁₆		6	
		600	1525 006	5 ⁹ / ₁₆		6 ¹ / ₄	
		1200	1525 007	6 ¹ / ₈		6 ¹ / ₁₆	
SE	2.4	200	1525 008	5	19	5 ³ / ₈	7
		400	1525 009	5 ⁹ / ₁₆		6	
		600	1525 010	5 ⁹ / ₁₆		6 ¹ / ₄	
		1200	1525 011	6 ¹ / ₈		6 ¹ / ₁₆	
SC	2.4	200	1525 012	5	19	5 ³ / ₈	7
		400	1525 013	5 ⁹ / ₁₆		6	
		600	1525 014	5 ⁹ / ₁₆		6 ¹ / ₄	
		1200	1525 015	6 ¹ / ₈		6 ¹ / ₁₆	

double throw • A-10 insulators

DA	2.4	200	1525 016	5 ¹ / ₈	26	7
		400	1525 017	5 ¹ / ₁₆			
		600	1525 018	5 ¹ / ₁₆			
		1200	1525 019	6 ¹ / ₄			
DB	2.4	200	1525 020	5 ¹ / ₈	26	5 ¹ / ₄	7
		400	1525 021	5 ¹ / ₁₆		5 ³ / ₈	
		600	1525 022	5 ¹ / ₁₆		6 ¹ / ₈	
		1200	1525 023	6 ¹ / ₄		6 ⁹ / ₁₆	
DE	2.4	200	1525 024	5 ¹ / ₈	26	5 ¹ / ₄	7
		400	1525 025	5 ¹ / ₁₆		5 ³ / ₈	
		600	1525 026	5 ¹ / ₁₆		6 ¹ / ₈	
		1200	1525 027	6 ¹ / ₄		6 ⁹ / ₁₆	
DF	2.4	200	1525 028	5 ¹ / ₈	26	5 ¹ / ₄	7
		400	1525 029	5 ¹ / ₁₆		5 ³ / ₈	
		600	1525 030	5 ¹ / ₁₆		6 ¹ / ₈	
		1200	1525 031	6 ¹ / ₄		6 ⁹ / ₁₆	
DC	2.4	200	1525 032	5 ¹ / ₈	26	5 ¹ / ₄	7
		400	1525 033	5 ¹ / ₁₆		5 ³ / ₈	
		600	1525 034	5 ¹ / ₁₆		6 ¹ / ₈	
		1200	1525 035	6 ¹ / ₄		6 ⁹ / ₁₆	
DD	2.4	200	1525 036	5 ¹ / ₈	26	5 ¹ / ₄	7
		400	1525 037	5 ¹ / ₁₆		5 ³ / ₈	
		600	1525 038	5 ¹ / ₁₆		6 ¹ / ₈	
		1200	1525 039	6 ¹ / ₄		6 ⁹ / ₁₆	

type	kv BIL	amp	LC style number	A	B	C	D
------	-----------	-----	--------------------	---	---	---	---

single throw • A-20 insulators

SA	4.8	400	1525 082	6 ⁹ / ₁₆	24	9
		600	1525 083	6 ⁹ / ₁₆			
		1200	1525 084	7 ¹ / ₈			
		7.2	400	1525 085	7 ⁹ / ₁₆	24
SH	13.2	400	1525 088	9 ³ / ₁₆	27	12
		600	1525 089	9 ³ / ₁₆			
		1200	1525 090	9 ³ / ₁₆			
		14.4	400	1525 091	10 ¹ / ₁₆	27
SE	4.8	400	1525 094	6 ⁹ / ₁₆	24	8 ⁹ / ₁₆	9
		600	1525 095	6 ⁹ / ₁₆		8 ³ / ₄	
		1200	1525 096	7 ¹ / ₈		9 ³ / ₁₆	
		7.2	400	1525 097	7 ⁹ / ₁₆	24	9 ⁵ / ₈
SH	13.2	400	1525 098	7 ⁹ / ₁₆	24	9 ⁵ / ₈	9
		600	1525 099	8 ¹ / ₈		10 ¹ / ₄	
		1200	1525 100	9 ³ / ₁₆	27	11 ¹ / ₄	12
		14.4	400	1525 103	10 ¹ / ₁₆	27	12 ⁷ / ₈
SE	4.8	400	1525 106	6 ⁹ / ₁₆	24	8 ⁹ / ₁₆	9
		600	1525 107	6 ⁹ / ₁₆		8 ³ / ₄	
		1200	1525 108	7 ¹ / ₈		9 ³ / ₁₆	
		7.2	400	1525 109	7 ⁹ / ₁₆	24	9 ⁵ / ₈
SH	13.2	400	1525 112	9 ³ / ₁₆	27	11 ¹ / ₄	12
		600	1525 113	9 ³ / ₁₆		11 ⁷ / ₁₆	
		1200	1525 114	9 ³ / ₁₆		11 ⁷ / ₈	
		14.4	400	1525 115	10 ¹ / ₁₆	27	12 ⁷ / ₈
SE	4.8	400	1525 118	6 ⁹ / ₁₆	24	8 ⁹ / ₁₆	9
		600	1525 119	6 ⁹ / ₁₆		8 ³ / ₄	
		1200	1525 120	7 ¹ / ₈		9 ³ / ₁₆	
		7.2	400	1525 121	7 ⁹ / ₁₆	24	9 ⁵ / ₈
SH	13.2	400	1525 124	9 ³ / ₁₆	27	11 ¹ / ₄	12
		600	1525 125	9 ³ / ₁₆		11 ⁷ / ₁₆	
		1200	1525 126	9 ³ / ₁₆		11 ⁷ / ₈	
		14.4	400	1525 127	10 ¹ / ₁₆	27	12 ⁷ / ₈
SE	4.8	400	1525 118	6 ⁹ / ₁₆	24	8 ⁹ / ₁₆	9
		600	1525 119	6 ⁹ / ₁₆		8 ³ / ₄	
		1200	1525 120	7 ¹ / ₈		9 ³ / ₁₆	
		7.2	400	1525 121	7 ⁹ / ₁₆	24	9 ⁵ / ₈
SH	13.2	400	1525 124	9 ³ / ₁₆	27	11 ¹ / ₄	12
		600	1525 125	9 ³ / ₁₆		11 ⁷ / ₁₆	
		1200	1525 126	9 ³ / ₁₆		11 ⁷ / ₈	
		14.4	400	1525 127	10 ¹ / ₁₆	27	12 ⁷ / ₈
SE	4.8	400	1525 118	6 ⁹ / ₁₆	24	8 ⁹ / ₁₆	9
		600	1525 119	6 ⁹ / ₁₆		8 ³ / ₄	
		1200	1525 120	7 ¹ / ₈		9 ³ / ₁₆	
		7.2	400	1525 121	7 ⁹ / ₁₆	24	9 ⁵ / ₈
SH	13.2	400	1525 124	9 ³ / ₁₆	27	11 ¹ / ₄	12
		600	1525 125	9 ³ / ₁₆		11 ⁷ / ₁₆	
		1200	1525 126	9 ³ / ₁₆		11 ⁷ / ₈	
		14.4	400	1525 127	10 ¹ / ₁₆	27	12 ⁷ / ₈
SE	4.8	400	1525 118	6 ⁹ / ₁₆	24	8 ⁹ / ₁₆	9
		600	1525 119	6 ⁹ / ₁₆		8 ³ / ₄	
		1200	1525 120	7 ¹ / ₈		9 ³ / ₁₆	
		7.2	400	1525 121	7 ⁹ / ₁₆	24	9 ⁵ / ₈
SH	13.2	400	1525 124	9 ³ / ₁₆	27	11 ¹ / ₄	12
		600	1525 125	9 ³ / ₁₆		11 ⁷ / ₁₆	
		1200	1525 126	9 ³ / ₁₆		11 ⁷ / ₈	
		14.4	400	1525 127	10 ¹ / ₁₆	27	12 ⁷ / ₈
SE	4.8	400	1525 118	6 ⁹ / ₁₆	24	8 ⁹ / ₁₆	9
		600	1525 119	6 ⁹ / ₁₆		8 ³ / ₄	
		1200	1525 120	7 ¹ / ₈		9 ³ / ₁₆	
		7.2	400	1525 121	7 ⁹ / ₁₆	24	9 ⁵ / ₈
SH	13.2	400	1525 124	9 ³ / ₁₆	27	11 ¹ / ₄	12
		600	1525 125	9 ³ / ₁₆		11 ⁷ / ₁₆	
		1200	1525 126	9 ³ / ₁₆		11 ⁷ / ₈	
		14.4	400	1525 127	10 ¹ / ₁₆	27	12 ⁷ / ₈
SE	4.8	400	1525 118	6 ⁹ / ₁₆	24	8 ⁹ / ₁₆	9
		600	1525 119	6 ⁹ / ₁₆		8 ³ / ₄	
		1200	1525 120	7 ¹ / ₈		9 ³ / ₁₆	
		7.2	400	1525 121	7 ⁹ / ₁₆	24	9 ⁵ / ₈
SH	13.2	400	1525 124	9 ³ / ₁₆	27	11 ¹ / ₄	12
		600	1525 125	9 ³ / ₁₆		11 ⁷ / ₁₆	
		1200	1525 126	9 ³ / ₁₆		11 ⁷ / ₈	
		14.4	400	1525 127	10 ¹ / ₁₆	27	12 ⁷ / ₈
SE	4.8	400	1525 118	6 ⁹ / ₁₆	24	8 ⁹ / ₁₆	9
		600	1525 119	6 ⁹ / ₁₆		8 ³ / ₄	
		1200	1525 120	7 ¹ / ₈		9 ³ / ₁₆	
		7.2	400	1525 121	7 ⁹ / ₁₆	24	9 ⁵ / ₈
SH	13.2	400	1525 124	9 ³ / ₁₆	27	11 ¹ / ₄	12
		600	1525 125	9 ³ / ₁₆		11 ⁷ / ₁₆	
		1200	1525 126	9 ³ / ₁₆		11 ⁷ / ₈	
		14.4	400	1525 127	10 ¹ / ₁₆	27	12 ⁷ / ₈
SE	4.8	400	1525 118	6 ⁹ / ₁₆	24	8 ⁹ / ₁₆	9
		600	1525 119	6 ⁹ / ₁₆		8 ³ / ₄	
		1200	1525 120	7 ¹ / ₈		9 ³ / ₁₆	
		7.2	400	1525 121	7 ⁹ / ₁₆	24	9 ⁵ / ₈
SH	13.2	400	1525 124	9 ³ / ₁₆	27	11 ¹ / ₄	12
		600	152				

disconnecting switches







indoor • types LC, LCG and LCB

2.4 to 34.5 kv • 200 to 6000 amperes • single or double throw • hookstick or group operated


descriptive bulletin




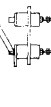
36-150

page 7

type	kv BIL	amp	LC style number	A	B	C	D
double throw • A-20 insulators—continued							
DA 	13.2	400	1525 136	9 ³ / ₁₆	39	12
		600	1525 137	9 ³ / ₁₆			
		1200	1525 138	9 ³ / ₁₆			
	14.4	400	1525 139	10 ¹ / ₁₆	39	
		600	1525 140	10 ¹ / ₁₆			
		1200	1525 141	11 ¹ / ₄			
DB 	4.8	400	1525 142	6 ¹ / ₁₆	33	8 ⁷ / ₁₆	9
		600	1525 143	6 ¹ / ₁₆			
		1200	1525 144	7 ¹ / ₄			
	7.2	400	1525 145	7 ¹ / ₁₆	33	9 ¹ / ₂	9
		600	1525 146	7 ¹ / ₁₆			
		1200	1525 147	8 ¹ / ₄			
	13.2	400	1525 148	9 ³ / ₁₆	39	11 ¹ / ₄	12
		600	1525 149	9 ³ / ₁₆			
		1200	1525 150	9 ³ / ₁₆			
	14.4	400	1525 151	10 ¹ / ₁₆	39	12 ⁷ / ₈	12
		600	1525 152	10 ¹ / ₁₆			
		1200	1525 153	11 ¹ / ₄			
DE 	4.8	400	1525 154	6 ¹ / ₁₆	33	8 ⁷ / ₁₆	9
		600	1525 155	6 ¹ / ₁₆			
		1200	1525 156	7 ¹ / ₄			
	7.2	400	1525 157	7 ¹ / ₁₆	33	9 ¹ / ₂	9
		600	1525 158	7 ¹ / ₁₆			
		1200	1525 159	8 ¹ / ₄			
	13.2	400	1525 160	9 ³ / ₁₆	39	11 ¹ / ₄	12
		600	1525 161	9 ³ / ₁₆			
		1200	1525 162	9 ³ / ₁₆			
	14.4	400	1525 163	10 ¹ / ₁₆	39	12 ⁷ / ₈	12
		600	1525 164	10 ¹ / ₁₆			
		1200	1525 165	11 ¹ / ₄			
DF 	4.8	400	1525 166	6 ¹ / ₁₆	33	8 ⁷ / ₁₆	9
		600	1525 167	6 ¹ / ₁₆			
		1200	1525 168	7 ¹ / ₄			
	7.2	400	1525 169	7 ¹ / ₁₆	33	9 ¹ / ₂	9
		600	1525 170	7 ¹ / ₁₆			
		1200	1525 171	8 ¹ / ₄			
	13.2	400	1525 172	9 ³ / ₁₆	39	11 ¹ / ₄	12
		600	1525 173	9 ³ / ₁₆			
		1200	1525 174	9 ³ / ₁₆			
	14.4	400	1525 175	10 ¹ / ₁₆	39	12 ⁷ / ₈	12
		600	1525 176	10 ¹ / ₁₆			
		1200	1525 177	11 ¹ / ₄			
DC 	4.8	400	1525 178	6 ¹ / ₁₆	33	8 ⁷ / ₁₆	9
		600	1525 179	6 ¹ / ₁₆			
		1200	1525 180	7 ¹ / ₄			
	7.2	400	1525 181	7 ¹ / ₁₆	33	9 ¹ / ₂	9
		600	1525 182	7 ¹ / ₁₆			
		1200	1525 183	8 ¹ / ₄			
	13.2	400	1525 184	9 ³ / ₁₆	39	11 ¹ / ₄	12
		600	1525 185	9 ³ / ₁₆			
		1200	1525 186	9 ³ / ₁₆			
	14.4	400	1525 187	10 ¹ / ₁₆	39	12 ⁷ / ₈	12
		600	1525 188	10 ¹ / ₁₆			
		1200	1525 189	11 ¹ / ₄			
DD 	4.8	400	1525 190	6 ¹ / ₁₆	33	8 ⁷ / ₁₆	9
		600	1525 191	6 ¹ / ₁₆			
		1200	1525 192	7 ¹ / ₄			
	7.2	400	1525 193	7 ¹ / ₁₆	33	9 ¹ / ₂	9
		600	1525 194	7 ¹ / ₁₆			
		1200	1525 195	8 ¹ / ₄			
	13.2	400	1525 196	9 ³ / ₁₆	39	11 ¹ / ₄	12
		600	1525 197	9 ³ / ₁₆			
		1200	1525 198	9 ³ / ₁₆			
	14.4	400	1525 199	10 ¹ / ₁₆	39	12 ⁷ / ₈	12
		600	1525 200	10 ¹ / ₁₆			
		1200	1525 201	11 ¹ / ₄			

single throw • A-30 insulators

SA 	4.8	400	1525 358	6 ¹ / ₁₆	26	9
		600	1525 359	6 ¹ / ₁₆			
		1200	1525 360	7 ¹ / ₄			
	7.2	400	1525 362	7 ¹ / ₁₆	29	12
		600	1525 363	7 ¹ / ₁₆			
		1200	1525 364	8 ¹ / ₄			
	2000	400	1525 365	8 ⁷ / ₈			
		600	1525 366	8 ⁷ / ₈			
		3000	1491 660	9 ³ / ₁₆			

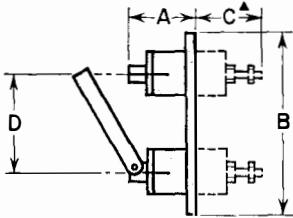
type	kv BIL	amp	LC style number	A	B	C	D
single throw • A-30 insulators—continued							
SA 	13.2	400	1525 366	9 ³ / ₁₆	29	12
		600	1525 367	9 ³ / ₁₆			
		1200	1525 368	9 ³ / ₁₆			
	14.4	400	1525 369	10 ³ / ₈	32	15
		600	1525 370	10 ³ / ₈			
		1200	1525 371	10 ³ / ₈			
	23	400	1525 372	11 ¹ / ₄	32	15
		600	1525 373	11 ¹ / ₄			
		1200	1525 374	11 ¹ / ₄			
	23	600	1525 375	14 ¹ / ₄	35	18
		2000	1525 376	14 ¹ / ₄			
		3000	1491 663	15 ¹ / ₄			
SH 	4.8	400	1525 377	6 ¹ / ₁₆	26	8 ⁷ / ₁₆	9
		600	1525 378	6 ¹ / ₁₆			
		1200	1525 379	7 ¹ / ₄			
	7.2	400	1525 380	7 ¹ / ₈	29	9 ¹ / ₂	12
		600	1525 381	7 ¹ / ₈			
		1200	1525 382	7 ¹ / ₈			
	13.2	400	1525 383	8 ¹ / ₄	29	11 ¹ / ₄	12
		600	1525 384	8 ¹ / ₄			
		1200	1525 385	8 ¹ / ₄			
	14.4	400	1525 386	9 ³ / ₁₆	32	12 ⁷ / ₈	15
		600	1525 387	9 ³ / ₁₆			
		1200	1525 388	9 ³ / ₁₆			
	23	400	1525 389	10 ¹ / ₁₆	35	16 ³ / ₈	18
		600	1525 390	10 ¹ / ₁₆			
		1200	1525 391	11 ¹ / ₄			
	23	2000	1525 392	11 ¹ / ₄	35	17 ¹ / ₄	18
		3000	1491 666	12 ¹ / ₄			
		600	1525 393	13 ¹ / ₁₆			
	23	1200	1525 394	14 ¹ / ₄	35	16 ³ / ₈	18
		2000	1525 395	14 ¹ / ₄			
		3000	1491 667	15 ¹ / ₄			
SE 	4.8	400	1525 396	6 ¹ / ₁₆	26	8 ⁷ / ₁₆	9
		600	1525 397	6 ¹ / ₁₆			
		1200	1525 398	7 ¹ / ₄			
	7.2	400	1525 399	7 ¹ / ₈	29	9 ¹ / ₂	12
		600	1525 400	7 ¹ / ₈			
		1200	1525 401	7 ¹ / ₈			
	13.2	400	1525 402	8 ¹ / ₄	29	11 ¹ / ₄	12
		600	1525 403	8 ¹ / ₄			
		1200	1525 404	8 ¹ / ₄			
	14.4	400	1525 405	9 ³ / ₁₆	32	12 ⁷ / ₈	15
		600	1525 406	9 ³ / ₁₆			
		1200	1525 407	9 ³ / ₁₆			
	23	400	1525 408	10 ¹ / ₁₆	35	16 ³ / ₈	18
		600	1525 409	10 ¹ / ₁₆			
		1200	1525 410	11 ¹ / ₄			
	23	2000	1525 411	11 ¹ / ₄	35	17 ¹ / ₄	18
		3000	1491 670	12 ¹ / ₄			
		600	1525 412	13 ¹ / ₁₆			
	23	1200	1525 413	14 ¹ / ₄	35	16 ³ / ₈	18
		2000	1525 414	14 ¹ / ₄			
		3000	1491 671	15 ¹ / ₄			
SC 	4.8	400	1525 415	6 ¹ / ₁₆	26	8 ⁷ / ₁₆	9
		600	1525 416	6 ¹ / ₁₆			
		1200	1525 417	7 ¹ / ₄			
	7.2	400	1525 418	7 ¹ / ₈	29	9 ¹ / ₂	12
		600	1525 419	7 ¹ / ₈			
		1200	1525 420	7 ¹ / ₈			
	13.2	400	1525 421	8 ¹ / ₄	29	11 ¹ / ₄	12
		600	1525 422	8 ¹ / ₄			
		1200	1525 423	8 ¹ / ₄			
	23	400	1525 424	9 ³ / ₁₆	35	16 ³ / ₈	18
		600	1525 425	9 ³ / ₁₆			
		1200	1525 426	9 ³ / ₁₆			
	23	2000	1525 427	10 ¹ / ₁₆	35	17 ¹ / ₄	18
		3000	1491 673	10 ¹ / ₁₆			
		400	1525 428	10 ¹ / ₁₆			
	23	600	1525 429	11 ¹ / ₄	35	16 ³ / ₈	18
		1200	1525 430	11 ¹ / ₄			
		2000	1525 431	11 ¹ / ₄			
	23	3000	1491 674	12 ¹ / ₄	35	17 ¹ / ₄	18
		600	1525 432	12 ¹ / ₄			
		1200	1525 433	12 ¹ / ₄			
	23	2000	1525 434	14 ¹ / ₄	35	16 ³ / ₈	18
		3000	1491 675	15 ¹ / ₄			
		600	1525 435	15 ¹ / ₄			

▲ dimensions approximate only • not for construction purposes

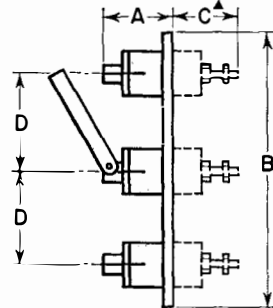


dimensions in inches type LC[▲] • single pole

single throw



double throw



code

- SA • single throw hook front connected
- SC • single throw hook two outside units back connected
- SE • single throw hook one upper unit back connected
- SH • single throw hook one lower unit back connected
- DA • double throw hook front connected
- DB • double throw hook center unit back connected
- DC • double throw hook two outside units back connected
- DD • double throw hook all back connected
- DE • double throw hook one upper unit back connected
- DF • double throw hook two upper units back connected

▲ for rear connected only

type	kv BIL	amp	LC style number	A	B	C	D
------	-----------	-----	--------------------	---	---	---	---

double throw • A-30 insulators

DA	4.8	400	1525 434	6 ¹¹ / ₁₆	35	9
		600	1525 435	6 ¹¹ / ₁₆			
		1200	1525 436	7 ¹ / ₄			
		2000	1525 437	7 ⁷ / ₈			
	7.2	400	1525 438	7 ¹¹ / ₁₆	41	12
		600	1525 439	7 ¹¹ / ₁₆			
		1200	1525 440	8 ¹ / ₄			
		2000	1525 441	8 ⁷ / ₈			
	13.2	400	1525 442	9 ³ / ₁₆	41	12
		600	1525 443	9 ³ / ₁₆			
		1200	1525 444	9 ³ / ₁₆			
		2000	1525 445	10 ³ / ₈			
14.4	400	1525 446	10 ¹¹ / ₁₆	47	15	
	600	1525 447	10 ¹¹ / ₁₆				
	1200	1525 448	11 ¹ / ₄				
	2000	1525 449	11 ⁷ / ₈				
23	600	1525 450	13 ¹¹ / ₁₆	53	18	
	1200	1525 451	14 ¹ / ₄				
	2000	1525 452	14 ⁷ / ₈				
	3000	1491 679	15 ¹ / ₄				
DB	4.8	400	1525 453	6 ¹¹ / ₁₆	35	8 ⁷ / ₁₆	9
		600	1525 454	6 ¹¹ / ₁₆			
		1200	1525 455	7 ¹ / ₄			
		2000	1525 456	7 ⁷ / ₈			
	7.2	400	1525 457	7 ¹¹ / ₁₆	41	9 ¹ / ₂	12
		600	1525 458	7 ¹¹ / ₁₆			
		1200	1525 459	8 ¹ / ₄			
		2000	1525 460	8 ⁷ / ₈			
	13.2	400	1525 461	9 ³ / ₁₆	41	11 ¹ / ₄	12
		600	1525 462	9 ³ / ₁₆			
		1200	1525 463	9 ³ / ₁₆			
		2000	1525 464	10 ³ / ₈			
14.4	400	1525 465	10 ¹¹ / ₁₆	47	12 ⁷ / ₈	15	
	600	1525 466	10 ¹¹ / ₁₆				
	1200	1525 467	11 ¹ / ₄				
	2000	1525 468	11 ⁷ / ₈				
23	600	1525 469	13 ¹¹ / ₁₆	53	16 ⁵ / ₁₆	18	
	1200	1525 470	14 ¹ / ₄				
	2000	1525 471	14 ⁷ / ₈				
	3000	1491 683	15 ¹ / ₄				
DE	4.8	400	1525 472	6 ¹¹ / ₁₆	35	8 ⁷ / ₁₆	9
		600	1525 473	6 ¹¹ / ₁₆			
		1200	1525 474	7 ¹ / ₄			
		2000	1525 475	7 ⁷ / ₈			
	7.2	400	1525 476	7 ¹¹ / ₁₆	41	9 ¹ / ₂	12
		600	1525 477	7 ¹¹ / ₁₆			
		1200	1525 478	8 ¹ / ₄			
		2000	1525 479	8 ⁷ / ₈			
	13.2	400	1525 480	9 ³ / ₁₆	41	11 ¹ / ₄	12
		600	1525 481	9 ³ / ₁₆			
		1200	1525 482	9 ³ / ₁₆			
		2000	1525 483	10 ³ / ₈			
3000	400	1491 684	9 ¹ / ₄	41	10 ³ / ₄	12	
	600	1525 481	9 ³ / ₁₆				
	1200	1525 482	9 ³ / ₁₆				
	2000	1525 483	10 ³ / ₈				

type	kv BIL	amp	LC style number	A	B	C	D
------	-----------	-----	--------------------	---	---	---	---

double throw • A-30 insulators—continued

DE	14.4	400	1525 484	10 ¹¹ / ₁₆	47	12 ⁷ / ₈	15	
		600	1525 485	10 ¹¹ / ₁₆				
		1200	1525 486	11 ¹ / ₄				
	23	600	1525 488	13 ¹¹ / ₁₆	53	16 ⁵ / ₁₆	18	
		1200	1525 489	14 ¹ / ₄				
		2000	1525 490	14 ⁷ / ₈				
DF	4.8	400	1525 491	6 ¹¹ / ₁₆	35	8 ⁷ / ₁₆	9	
		600	1525 492	6 ¹¹ / ₁₆				
		1200	1525 493	7 ¹ / ₄				
	7.2	400	1525 495	7 ¹¹ / ₁₆	41	9 ¹ / ₂	12	
		600	1525 496	7 ¹¹ / ₁₆				
		1200	1525 497	8 ¹ / ₄				
	23	600	1525 507	13 ¹¹ / ₁₆	53	16 ⁵ / ₁₆	18	
		1200	1525 508	14 ¹ / ₄				
		2000	1525 509	14 ⁷ / ₈				
	DC	4.8	400	1525 510	6 ¹¹ / ₁₆	35	8 ⁷ / ₁₆	9
			600	1525 511	6 ¹¹ / ₁₆			
			1200	1525 512	7 ¹ / ₄			
7.2		400	1525 514	7 ¹¹ / ₁₆	41	9 ¹ / ₂	12	
		600	1525 515	7 ¹¹ / ₁₆				
		1200	1525 516	8 ¹ / ₄				
13.2		400	1525 518	9 ³ / ₁₆	41	11 ¹ / ₄	12	
		600	1525 519	9 ³ / ₁₆				
		1200	1525 520	9 ³ / ₁₆				
14.4		400	1525 522	10 ¹¹ / ₁₆	47	12 ⁷ / ₈	15	
		600	1525 523	10 ¹¹ / ₁₆				
		1200	1525 524	11 ¹ / ₄				
23	600	1525 526	13 ¹¹ / ₁₆	53	16 ⁵ / ₁₆	18		
	1200	1525 527	14 ¹ / ₄					
	2000	1525 528	14 ⁷ / ₈					

▲ dimensions approximate only • not for construction purposes

disconnecting switches

indoor • types LC, LCG and LCB

2.4 to 34.5 kv • 200 to 6000 amperes • single or double throw • hookstick or group operated

descriptive bulletin

36-150

page 9

type	kv BIL	amp	LC style number	A	B	C	D
double throw • A-30 insulators—continued							
DD	4.8	400	1525 529	6 ¹ / ₁₆	35	8 ⁷ / ₁₆	9
		600	1525 530	6 ¹ / ₁₆		8 ⁵ / ₁₆	
		1200	1525 531	7 ¹ / ₈		9 ¹ / ₁₆	
		2000	1525 532	7 ⁷ / ₈		9 ⁵ / ₈	
	7.2	400	1525 533	7 ¹ / ₁₆	41	9 ¹ / ₁₆	12
		600	1525 534	7 ¹ / ₁₆		9 ¹ / ₁₆	
		1200	1525 535	8 ¹ / ₁₆		10 ⁵ / ₁₆	
		2000	1525 536	8 ⁷ / ₈		10 ⁵ / ₈	
		3000	1491 696	9 ¹ / ₄		10 ³ / ₄	
	13.2	400	1525 537	9 ³ / ₁₆	41	11 ¹ / ₄	12
		600	1525 538	9 ³ / ₁₆		11 ⁷ / ₁₆	
		1200	1525 539	9 ³ / ₄		11 ⁷ / ₈	
2000		1525 540	10 ³ / ₈	12 ³ / ₈			
3000		1491 697	10 ³ / ₄	12 ¹ / ₂			
14.4	400	1525 541	10 ¹ / ₁₆	47	12 ⁷ / ₈	15	
	600	1525 542	10 ¹ / ₁₆		13 ¹ / ₁₆		
	1200	1525 543	11 ¹ / ₄		13 ¹ / ₂		
	2000	1525 544	11 ⁷ / ₈		14		
	3000	1491 698	12 ¹ / ₄		14 ¹ / ₂		
23	600	1525 545	13 ¹ / ₁₆	53	16 ⁵ / ₁₆	18	
	1200	1525 546	14 ¹ / ₄		16 ³ / ₄		
	2000	1525 547	14 ⁷ / ₈		17 ¹ / ₄		
	3000	1491 699	15 ¹ / ₄		17 ³ / ₈		

type	kv BIL	amp	LC style number	A	B	C	D
single throw • B-40 insulators							
SA	7.2	1200	1525 744	9 ⁵ / ₈	29	12
		2000	1525 745	10 ¹ / ₄			
		3000	1525 912	10 ⁵ / ₈			
	13.2	1200	1525 746	11 ¹ / ₈	29	12
		2000	1525 747	11 ³ / ₈			
		3000	1525 913	12 ¹ / ₈			
	14.4	1200	1525 748	12 ⁵ / ₈	32	15
		2000	1525 749	13 ¹ / ₄			
		3000	1525 914	13 ³ / ₈			
	23	1200	1525 750	15 ⁵ / ₈	35	18
		2000	1525 751	16 ¹ / ₄			
		3000	1525 915	16 ⁵ / ₈			
SH	7.2	1200	1525 752	9 ⁵ / ₈	29	9 ⁷ / ₈	12
		2000	1525 753	10 ¹ / ₄		10 ³ / ₈	
		3000	1525 916	10 ⁵ / ₈		10 ³ / ₈	
	13.2	1200	1525 754	11 ¹ / ₈	29	11 ³ / ₁₆	12
		2000	1525 755	11 ³ / ₈		12	
		3000	1525 917	12 ¹ / ₈		12	
	14.4	1200	1525 756	12 ⁵ / ₈	32	13 ³ / ₁₆	15
		2000	1525 757	13 ¹ / ₄		13 ³ / ₄	
		3000	1525 918	13 ⁵ / ₈		13 ³ / ₄	
	23	1200	1525 758	15 ⁵ / ₈	35	16 ¹ / ₂	18
		2000	1525 759	16 ¹ / ₄		17	
		3000	1525 919	16 ⁵ / ₈		17	
SE	7.2	1200	1525 760	9 ⁵ / ₈	29	9 ⁷ / ₈	12
		2000	1525 761	10 ¹ / ₄		10 ³ / ₈	
		3000	1525 920	10 ⁵ / ₈		10 ³ / ₈	
	13.2	1200	1525 762	11 ¹ / ₈	29	11 ³ / ₁₆	12
		2000	1525 763	11 ³ / ₈		12	
		3000	1525 921	12 ¹ / ₈		12	
	14.4	1200	1525 764	12 ⁵ / ₈	32	13 ³ / ₁₆	15
		2000	1525 765	13 ¹ / ₄		13 ³ / ₄	
		3000	1525 922	13 ⁵ / ₈		13 ³ / ₄	
	23	1200	1525 766	15 ⁵ / ₈	35	16 ¹ / ₂	18
		2000	1525 767	16 ¹ / ₄		17	
		3000	1525 923	16 ⁵ / ₈		17	
SC	7.2	1200	1525 768	9 ⁵ / ₈	29	9 ⁷ / ₈	12
		2000	1525 769	10 ¹ / ₄		10 ³ / ₈	
		3000	1525 924	10 ⁵ / ₈		10 ³ / ₈	
	13.2	1200	1525 770	11 ¹ / ₈	29	11 ³ / ₁₆	12
		2000	1525 771	11 ³ / ₈		12	
		3000	1525 925	12 ¹ / ₈		12	
	14.4	1200	1525 772	12 ⁵ / ₈	32	13 ³ / ₁₆	15
		2000	1525 773	13 ¹ / ₄		13 ³ / ₄	
		3000	1525 926	13 ⁵ / ₈		13 ³ / ₄	
	23	1200	1525 774	15 ⁵ / ₈	35	16 ¹ / ₂	18
		2000	1525 775	16 ¹ / ₄		17	
		3000	1525 927	16 ⁵ / ₈		17	

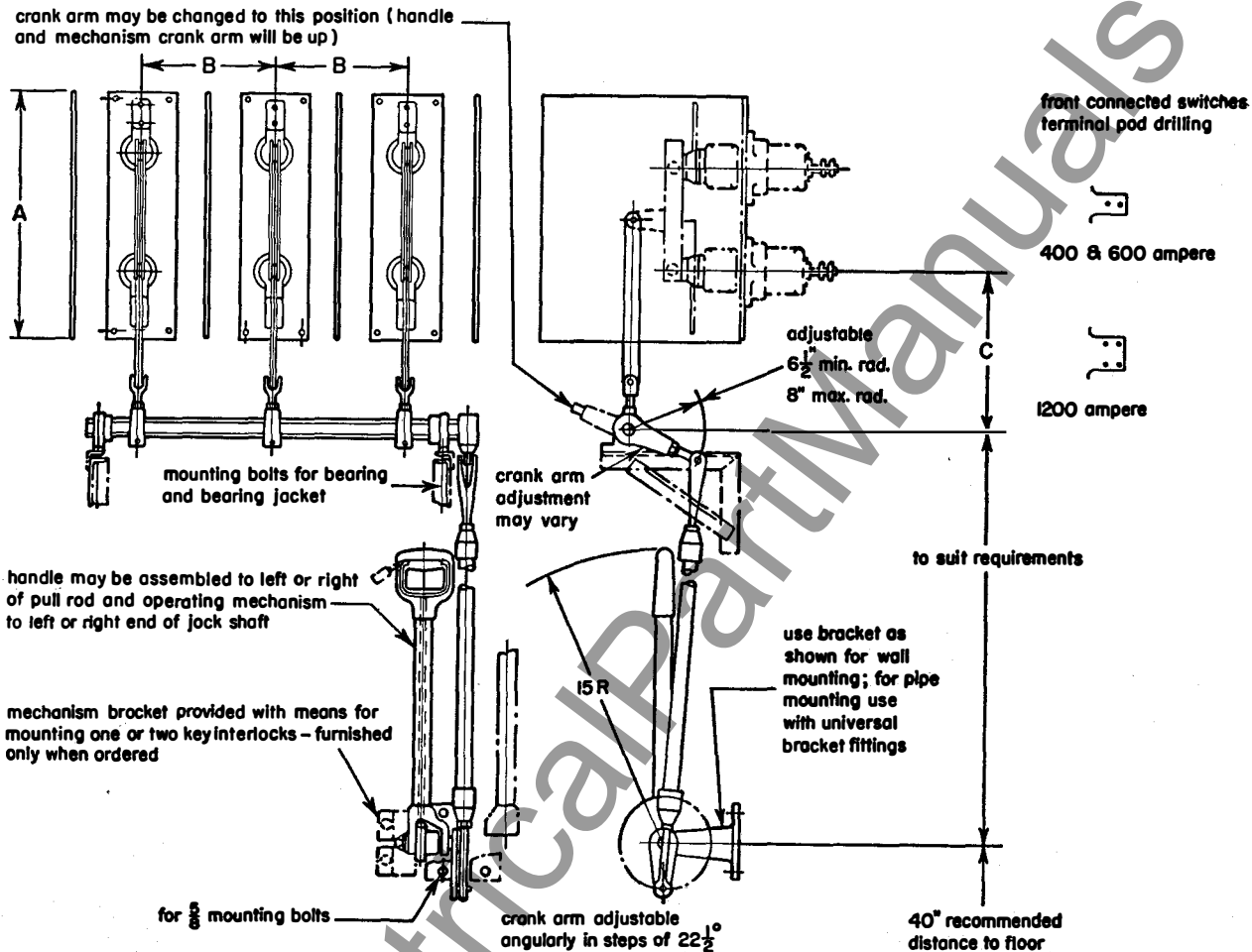
type	kv BIL	amp	LC style number	A	B	C	D
double throw • B-40 insulators							
DA	7.2	1200	1525 776	9 ⁵ / ₈	41	12
		2000	1525 777	10 ¹ / ₄			
		3000	1525 928	10 ⁵ / ₈			
	13.2	1200	1525 778	11 ¹ / ₈	41	12
		2000	1525 779	11 ³ / ₈			
		3000	1525 929	12 ¹ / ₈			
	14.4	1200	1525 780	12 ⁵ / ₈	47	15
		2000	1525 781	13 ¹ / ₄			
		3000	1525 930	13 ³ / ₈			
	23	1200	1525 782	15 ⁵ / ₈	53	18
		2000	1525 783	16 ¹ / ₄			
		3000	1525 931	16 ⁵ / ₈			
DB	7.2	1200	1525 784	9 ⁵ / ₈	4 ¹ / ₂	9 ⁷ / ₈	12
		2000	1525 785	10 ¹ / ₄		10 ³ / ₈	
		3000	1525 932	10 ⁵ / ₈		10 ³ / ₈	
	13.2	1200	1525 786	11 ¹ / ₈	41	11 ³ / ₁₆	12
		2000	1525 787	11 ³ / ₈		12	
		3000	1525 933	12 ¹ / ₈		12	
	14.4	1200	1525 788	12 ⁵ / ₈	47	13 ³ / ₁₆	15
		2000	1525 789	13 ¹ / ₄		13 ³ / ₄	
		3000	1525 934	13 ⁵ / ₈		13 ³ / ₄	
	23	1200	1525 790	15 ⁵ / ₈	53	16 ¹ / ₂	18
		2000	1525 791	16 ¹ / ₄		17	
		3000	1525 935	16 ⁵ / ₈		17	
DE	7.2	1200	1525 792	9 ⁵ / ₈	41	9 ⁷ / ₈	12
		2000	1525 793	10 ¹ / ₄		10 ³ / ₈	
		3000	1525 936	10 ⁵ / ₈		10 ³ / ₈	
	13.2	1200	1525 794	11 ¹ / ₈	41	11 ³ / ₁₆	12
		2000	1525 795	11 ³ / ₈		12	
		3000	1525 937	12 ¹ / ₈		12	
	14.4	1200	1525 796	12 ⁵ / ₈	47	13 ³ / ₁₆	15
		2000	1525 797	13 ¹ / ₄		13 ³ / ₄	
		3000	1525 938	13 ⁵ / ₈		13 ³ / ₄	
	23	1200	1525 798	15 ⁵ / ₈	53	16 ¹ / ₂	18
		2000	1525 799	16 ¹ / ₄		17	
		3000	1525 939	16 ⁵ / ₈		17	
DF	7.2	1200	1525 800	9 ⁵ / ₈	41	9 ⁷ / ₈	12
		2000	1525 801	10 ¹ / ₄		10 ³ / ₈	
		3000	1525 940	10 ⁵ / ₈		10 ³ / ₈	
	13.2	1200	1525 802	11 ¹ / ₈	41	11 ³ / ₁₆	12
		2000	1525 803	11 ³ / ₈		12	
		3000	1525 941	12 ¹ / ₈		12	
	14.4	1200	1525 804	12 ⁵ / ₈	47	13 ³ / ₁₆	15
		2000	1525 805	13 ¹ / ₄		13 ³ / ₄	
		3000	1525 942	13 ⁵ / ₈		13 ³ / ₄	
	23	1200	1525 806	15 ⁵ / ₈	53	16 ¹ / ₂	18
		2000	1525 807	16 ¹ / ₄		17	
		3000	1525 943	16 ⁵ / ₈		17	
DC	7.2	1200	1525 808	9 ⁵ / ₈	41	9 ⁷ / ₈	12
		2000	1525 809	10 ¹ / ₄		10 ³ / ₈	
		3000	1525 944	10 ⁵ / ₈		10 ³ / ₈	
	13.2	1200	1525 810	11 ¹ / ₈	41	11 ³ / ₁₆	12
		2000	1525 811	11 ³ / ₈		12	
		3000	1525 945	12 ¹ / ₈		12	
	14.4	1200	1525 812	12 ⁵ / ₈	47	13 ³ / ₁₆	15
		2000	1525 813	13 ¹ / ₄		13 ³ / ₄	
		3000	1525 946	13 ⁵ / ₈		13 ³ / ₄	
	23	1200	1525 814	15 ⁵ / ₈	53	16 ¹ / ₂	18
		2000	1525 815	16 ¹ / ₄		17	
		3000	1525 947	16 ⁵ / ₈		17	
DD	7.2	1200	1525 816	9 ⁵ / ₈	41	9 ⁷ / ₈	12
		2000	1525 817	10 ¹ / ₄		10 ³ / ₈	
		3000	1525 948	10 ⁵ / ₈		10 ³ / ₈	
	13.2	1200	1525 818	11 ¹ / ₈	41	11 ³ / ₁₆	12
		2000	1525 819	11 ³ / ₈		12	
		3000	1525 949	12 ¹ / ₈		12	
	14.4	1200	1525 820	12 ⁵ / ₈	47	13 ³ / ₁₆	15
		2000	1525 821	13 ¹ / ₄		13 ³ / ₄	
		3000	1525 950	13 ⁵ / ₈		13 ³ / ₄	
	23	1200	1525 822	15 ⁵ / ₈	53	16 ¹ / ₂	18
		2000	1525 823	16 ¹ / ₄		17	
		3000	1525 951	16 ⁵ / ₈		17	

▲ dimensions approximate only • not for construction purposes



dimensions in inches type LCG • group operated • single throw

open type group operated with individual bases



voltage rating		amps	NEMA strength class	style numbers				dimensions: inches▲		
new BIL kv rating	impulse withstand test kv			break jaw and hinge jaw: front operated	break jaw: front • hinge jaw: rear connected	break jaw: rear • hinge jaw: front connected	break jaw: and hinge jaw: rear connected	A	B minimum recommended	C
2.4	45	400	A-10	1491 805	1491 820	1491 835	1491 850	24	8	9
		600		1491 806	1491 821	1491 836	1491 851	24	8	9
		1200		1491 807	1491 822	1491 837	1491 852	24	8	9
4.8	60	400	A-20	1491 808	1491 823	1491 838	1491 853	24	8	9
		600		1491 809	1491 824	1491 839	1491 854	24	8	9
		1200		1491 810	1491 825	1491 840	1491 855	24	8	9
7.2	75	400	A-20	1491 811	1491 826	1491 841	1491 856	24	8	11
		600		1491 812	1491 827	1491 842	1491 857	24	8	11
		1200		1491 813	1491 828	1491 843	1491 858	24	8	11
13.2	95	400	A-20	1491 814	1491 829	1491 844	1491 859	27	10	11
		600		1491 815	1491 830	1491 845	1491 860	27	10	11
		1200		1491 816	1491 831	1491 846	1491 861	27	10	11
14.41	10	400	A 20	1491 817	1491 832	1491 847	1491 862	27	12	11
		600		1491 818	1491 833	1491 848	1491 863	27	12	11
		1200		1491 819	1491 834	1491 849	1491 864	27	12	11

■ Style number includes four (4) insulating barriers.

note: Single conductor terminals for 600 mcm cable or 3/4" I.P.S. tubing or smaller are furnished when specified on order.

▲ dimensions approximate only • not for construction purposes

disconnecting switches

indoor • types LC, LCG and LCB

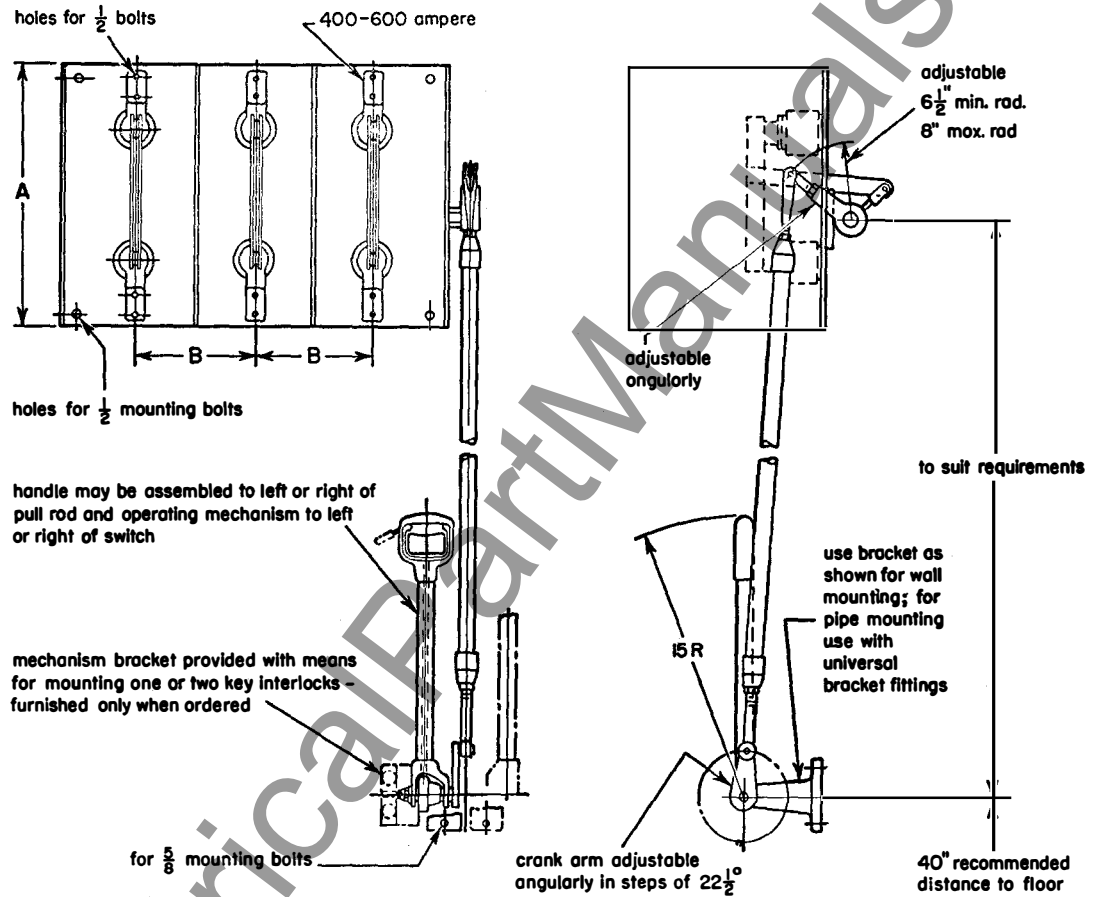
2.4 to 34.5 kv • 200 to 6000 amperes • single or double throw • hookstick or group operated

descriptive bulletin

36-150

page 11

open type group operated with common base



voltage rating		amps	NEMA strength class	style number ■	dimensions: inches ▲	
new BIL kv rating	impulse withstand kv				A	B minimum recommended
2.4	45	400	A-10	1491 790	21 1/2	8
		600		1491 791	21 1/2	8
		1200		1491 792	21 1/2	8
4.8	60	400	A-20	1491 793	21 1/2	8
		600		1491 794	21 1/2	8
		1200		1491 795	21 1/2	8
7.2	75	400	A-20	1491 796	21 1/2	10
		600		1491 797	21 1/2	10
		1200		1491 798	21 1/2	10
13.2	95	400	A-20	1491 799	21 1/2	12
		600		1491 800	21 1/2	12
		1200		1491 801	21 1/2	12
14.4	110	400	A-20	1491 802	21 1/2	12
		600		1491 803	21 1/2	12
		1200		1491 804	21 1/2	12

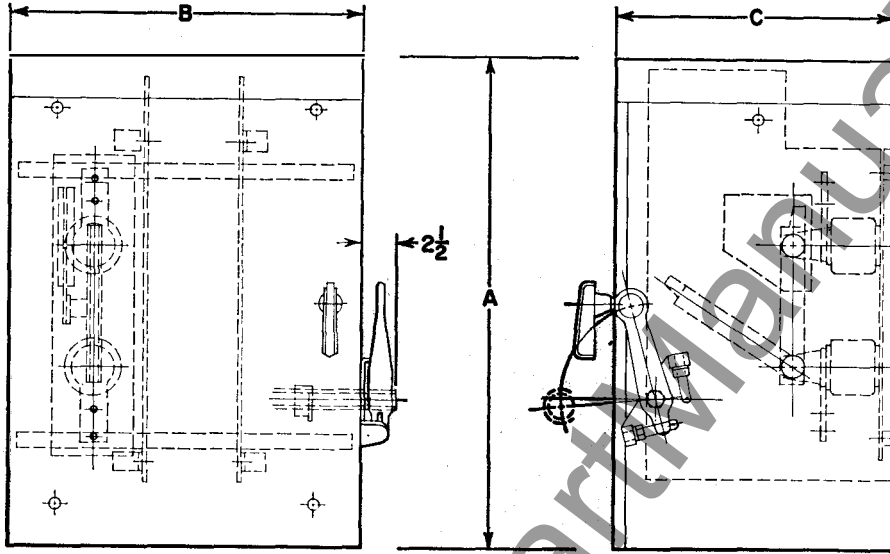
■ Style number includes four (4) insulating barriers.

▲ dimensions approximate only • not for construction purposes

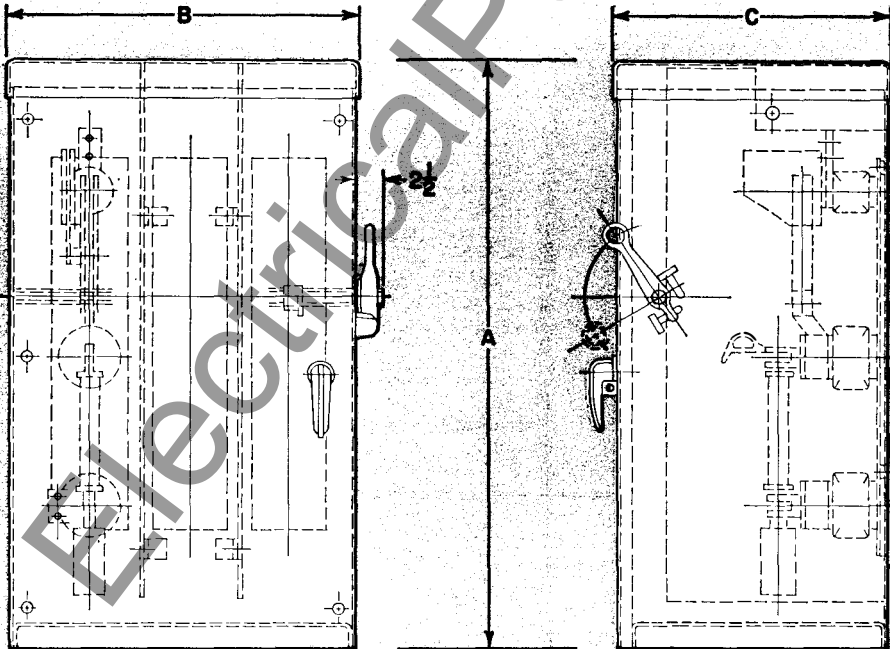


dimensions in inches type LCB interrupting switch
single throw[▲]

unfused type



fused type



kv	single throw • unfused				single throw • BA-200 fuse					single throw • BA-400 fuse								
	amp rating		style number	A	B	C	amp rating		style number	A	B	C	amp rating		style	A	B	C
	cont	interr					cont	interr					cont	interr				
4.8	400	400	1491 181	41	29	24	200	400	1491 186	63	35 3/4	24 3/4	400	400	1491 191	67	38 1/4	26 1/2
7.2	400	200	1491 182	41	29	25	200	200	1491 187	63	35 3/4	24 3/4	400	200	1491 192	67	38 1/4	26 1/2
13.2	400	100	1491 183	62	38 3/4	29 1/4	200	100	1491 188	84	43 1/4	29 1/2	400	100	1491 193	84	46 3/4	30

▲ dimensions approximate only • not for construction purposes

disconnecting switches

indoor • types LC, LCG and LCB

2.4 to 34.5 kv • 200 to 6000 amperes • single or double throw • hookstick or group operated

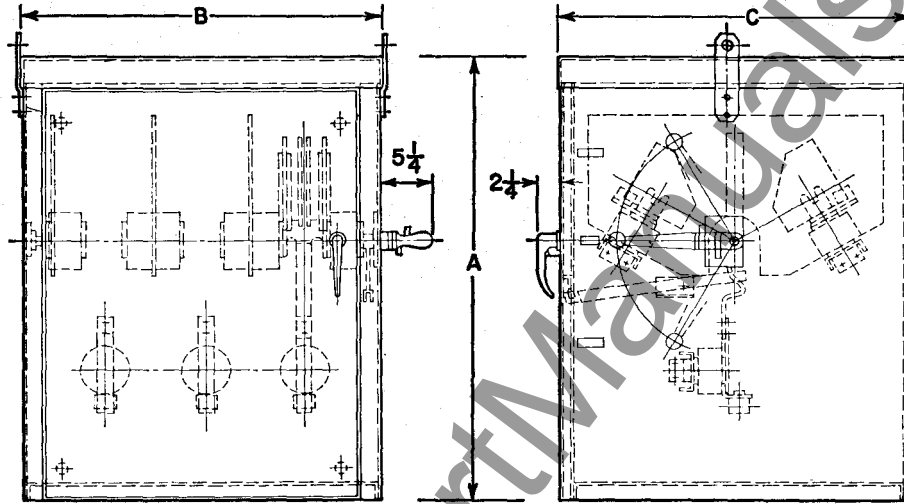
descriptive
bulletin

36-150

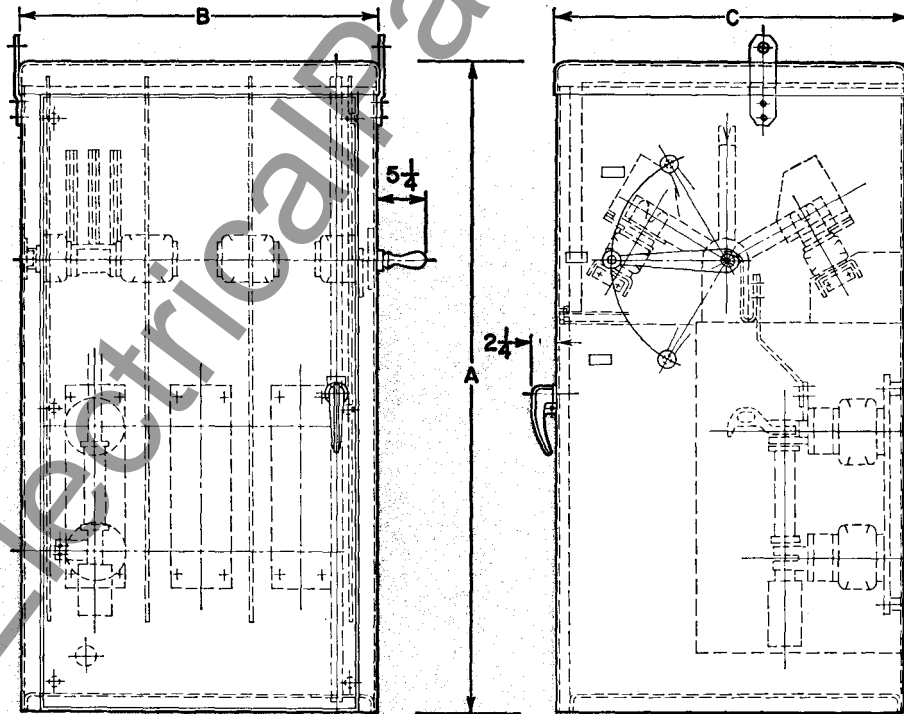
page 13

double throw[▲]

unfused type



fused type



kv	double throw • unfused						double throw • BA-200 fuse						double throw • BA-400 fuse					
	ampere rating		A	B	C		ampere rating		A	B	C		ampere rating		A	B	C	
	cont	interr					cont	interr					cont	interr				
4.8	600	600	48	38	35		200	600	67	38	35		400	600	72	38	35	
7.2	600	600	48	40	36 ⁵ / ₁₆		200	600	67	40	36 ⁵ / ₁₆		400	600	72	40	36 ⁵ / ₁₆	
13.2	600	600	54	46	43 ³ / ₁₆		200	600	81	46	43 ³ / ₁₆		400	600	90	46	43 ³ / ₁₆	

▲ dimensions approximate only • not for construction purposes



dimensions in inches type LCB for switchboard builders

figure 1

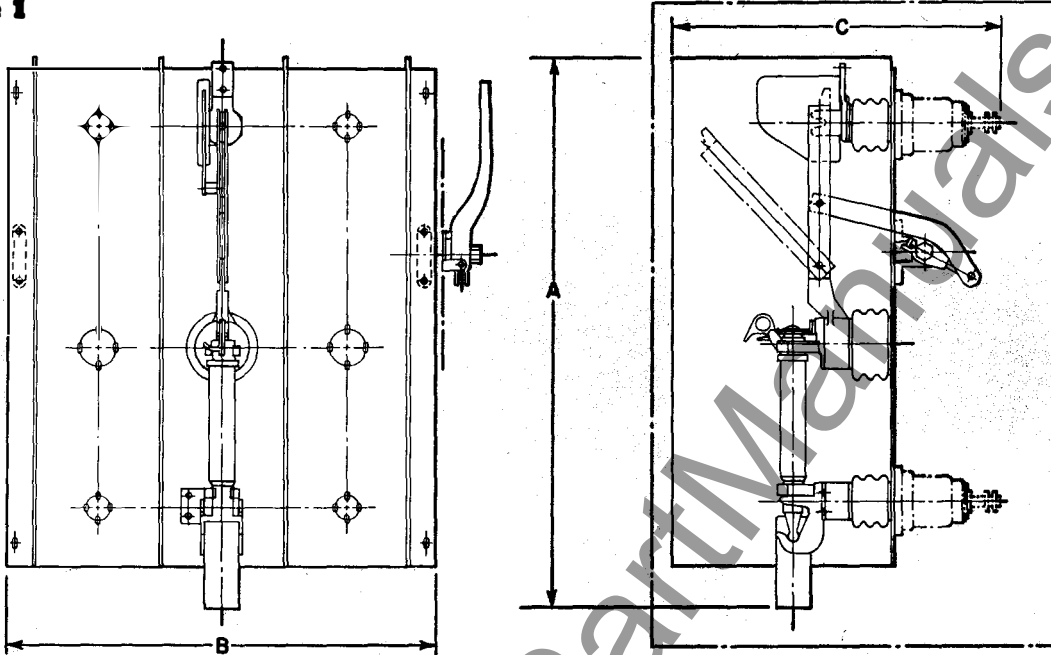


figure 2

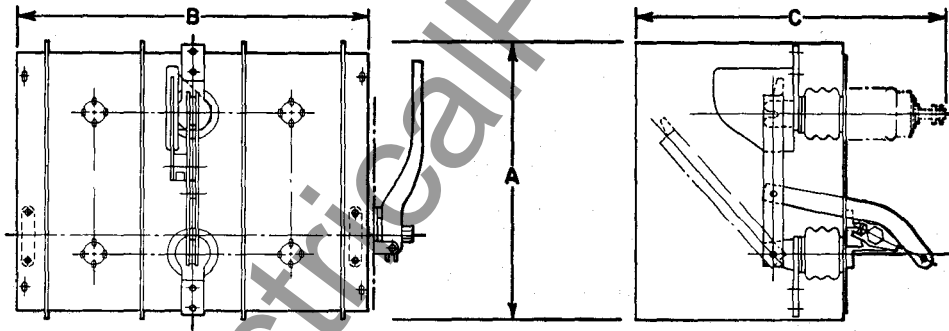
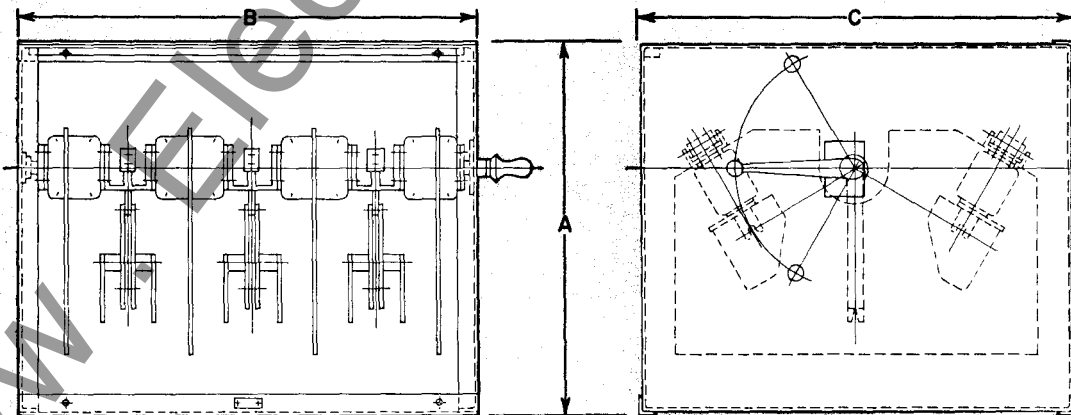


figure 3



disconnecting switches

indoor • types LC, LCG and LCB

2.4 to 34.5 kv • 200 to 6000 amperes • single or double throw • hookstick or group operated

descriptive
bulletin

36-150

page 15

connection	kv	rating: amperes		style number	dimensions: inches▲		
		continuous	interrupting		A	B	C

figure 1: single throw • BA-200 fuse

front connected	4.8	200	600	1767 059	48¾	35¼	18¼
	7.2	200	600	1767 060	49¾	35¼	19¾
	13.2	200	600	1767 061	57¾	41¼	23¾
	14.4	200	600	1767 062	62¾	46½	25¾
top rear connected	4.8	200	600	1767 063	48¾	35¼	26⅛
	7.2	200	600	1767 064	49¾	35¼	28⅞
	13.2	200	600	1767 065	57¾	41¼	34⅝
	14.4	200	600	1767 066	62¾	46½	38¼
bottom rear connected	4.8	200	600	1767 067	48¾	35¼	18¼
	7.2	200	600	1767 068	49¾	35¼	19¾
	13.2	200	600	1767 069	57¾	41¼	23¾
	14.4	200	600	1767 070	62¾	46½	25¾
top and bottom rear connected	4.8	200	600	1767 071	48¾	35¼	26⅛
	7.2	200	600	1767 072	49¾	35¼	28⅞
	13.2	200	600	1767 073	57¾	41¼	34⅝
	14.4	200	600	1767 074	62¾	46½	38¼

figure 1: single throw • BA-400 fuse

front connected	4.8	400	600	1767 075	53	37½	18¼
	7.2	400	600	1767 076	54	37½	19¾
	13.2	400	600	1767 077	62	44¼	23¾
	14.4	400	600	1767 078	67	49½	25¾
top rear connected	4.8	400	600	1767 079	53	37½	26⅛
	7.2	400	600	1767 080	54	37½	28⅞
	13.2	400	600	1767 081	62	44¼	34⅝
	14.4	400	600	1767 082	67	49½	38¼
bottom rear connected	4.8	400	600	1767 083	53	37½	18¼
	7.2	400	600	1767 084	54	37½	19¾
	13.2	400	600	1767 085	62	44¼	23¾
	14.4	400	600	1767 086	67	49½	25¾
top and bottom rear connected	4.8	400	600	1767 087	53	37½	26⅛
	7.2	400	600	1767 088	54	37½	28⅞
	13.2	400	600	1767 089	62	44¼	34⅝
	14.4	400	600	1767 090	67	49½	38¼

figure 2: single throw • unfused

front connected	4.8	600	600	1767 051	26	29¼	18⅜
	7.2	600	600	1767 052	27	29¼	19⅜
	13.2	600	600	1767 053	28	36¼	23⅜
	14.4	600	600	1767 054	33	40¾	25⅜
top rear connected	4.8	600	600	1767 055	26	29¼	26⅞
	7.2	600	600	1767 056	27	29¼	28⅜
	13.2	600	600	1767 057	28	36¼	34⅞
	14.4	600	600	1767 058	33	40¾	38¼

figure 3: double throw • unfused

4.8	600	600	304C968G02	31	40	36½
7.2	600	600	304C968G01	31	40	36½
13.2	600	600	300C326G01	36½	45⅛	43½

▲ dimensions approximate only • not for construction purposes

www.ElectricalArtManuals.com

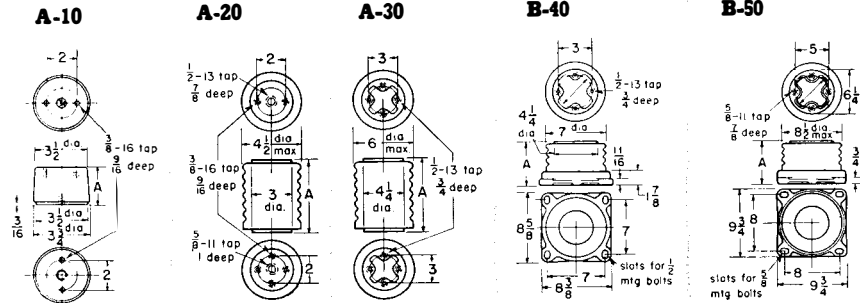


disconnecting switches • indoor
types LC, LCG and LCB

insulators NEMA B.I.L. standard

further information

prices: price list 36-120



construction classes:

class A: Insulator unit with inserts both top and bottom. This type is used on all Westinghouse bus supports and switches in strength class 10, 20 and 30.

class B: Insulator unit with insert at the top and an outside bonded base. This type is used on Westinghouse bus supports and switches in strength classes 40 and 50.

B.I.L. voltage rating: kv	withstand test voltage: kv		mechanical values: strength (lbs)				style number ①	height: inches (A)
	im-pulse②	low freq (1 min) ③	canti-lever ③	torsion in lbs	ten-sion	com-pression		

strength class A-10 (maximum diameter 3 3/4")								
2.4	45	15	750	1500	1500	10000	1482 027	2 1/2

strength class A-20 (maximum diameter 4 1/2")								
4.8	60	19	1000	2500	2000	20000	1581 768	3 1/2
7.2	75	26	1500	3500	3000	20000	1581 769	4 1/2
13.2	95	36	1250	3500	3000	20000	1581 770	6
14.4	110	50	1000	3500	3000	20000	1581 774	7 1/2

strength class A-30 (maximum diameter 6")								
4.8	60	19	2000	4500	3500	30000	1581 771	3 1/2
7.2	75	26	3000	6000	5000	30000	1581 772	4 1/2
13.2	95	36	2500	6000	5000	30000	1581 773	6
14.4	110	50	2000	6000	5000	30000	1581 775	7 1/2
23	150	60	1500	6000	5000	30000	1581 776	10 1/2
34.5	200	80	1250	6000	5000	30000	1581 767	15

strength class B-40 (maximum diameter 7")								
7.2	75	26	6000	10000	8000	50000	1584 610	6
13.2	95	36	5000	10000	8000	50000	1584 611	7 1/2
14.4	110	50	4000	10000	8000	50000	1584 612	9
23	150	60	3000	10000	8000	50000	1584 613	12
34.5	200	80	2500	10000	8000	50000	1584 614	15

strength class B-50 (maximum diameter 8 1/2")								
7.2	75	26	12000	15000	12000	80000	1584 615	6
13.2	95	36	10000	15000	12000	80000	1584 616	7 1/2
14.4	110	50	8000	15000	12000	80000	1584 617	9
23	150	60	6000	15000	12000	80000	1584 618	12
34.5	200	80	5000	15000	12000	80000	1584 619	15

① Impulse withstand test voltage with 1 1/2—40 wave, positive and negative.
② Cantilever strength ratings are given 2 1/2" above cap.
③ Front connected.

note 1: Maximum outside diameter given above is to be interpreted as the largest diameter over porcelain on a smooth post or a tapered post and is to be the outside diameter over corrugations on a corrugated post.

note 2: When requested to give strengths at heights other than those listed above, use value for next higher listed height.