

## Minatrol Switch

### INSTRUCTIONS

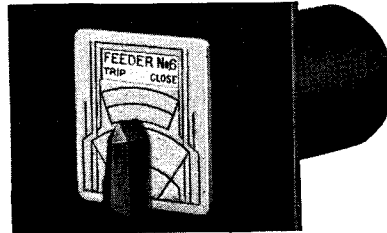


FIG. 1—FRONT VIEW OF MINATROL

#### General

The Minatrol Switch is a compact control switch for panel mounting. It may be used for a wide variety of control circuit applications.

#### Construction and Operation

The Minatrol Switch consists of toggle switches with quick make and quick break contacts mounted in a frame of unit construction. The complete switch is enclosed in a split micarta tube.

The operating levers of the individual toggle switches are engaged by a rod operated from the knob on the front of the switch. By reversing the mounting direction of some of the individual toggle switches, some of the switches are made to close for each direction of motion of the knob.

The Minatrol is normally a three position switch. It may be either spring

return from the end positions to the middle or, by adding a latch spring, stay put on any of the three positions.

The individual toggle switches are made in three different constructions so that the contacts of the Minatrol switch may be closed on one end position and open in the middle and other end, closed on one end and in the middle and open on the other end or closed on one end and remain closed when returned to the middle but open on the other end and then remains open when returned to the middle. (The last described contact is known as a "slip-contact").

#### Installation

The Minatrol Switch is mounted from the front of the panel by means of four screws. These screws are uncovered by pulling forward the front coverplate and rotating it around the operating shaft. The drilling plan is shown in Figure 2.

#### Repairs and Renewal Parts

Minatrol switches do not normally require maintenance since they are made up of toggle switches. If replacement toggle switches are required, they may be ordered by the following style numbers.

	Style No.
Toggle switch spring return to open.....	694740
Toggle switch spring return to close.....	790088
Toggle switch for slip contact.....	790146

#### Ordering Information

Order renewal parts from the nearest Westinghouse Electric Corporation Office or from the Sharon, Pa., Works.

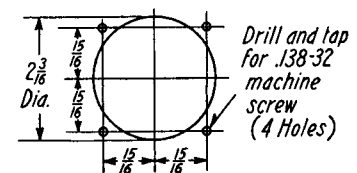


FIG. 2—DRILLING PLAN FOR MINATROL