



**SWITCHGEAR DEVICES**  
**INDOOR INTERRUPTER SWITCHES**  
**THREE-POLE, GANG-OPERATED • TYPE LCB**

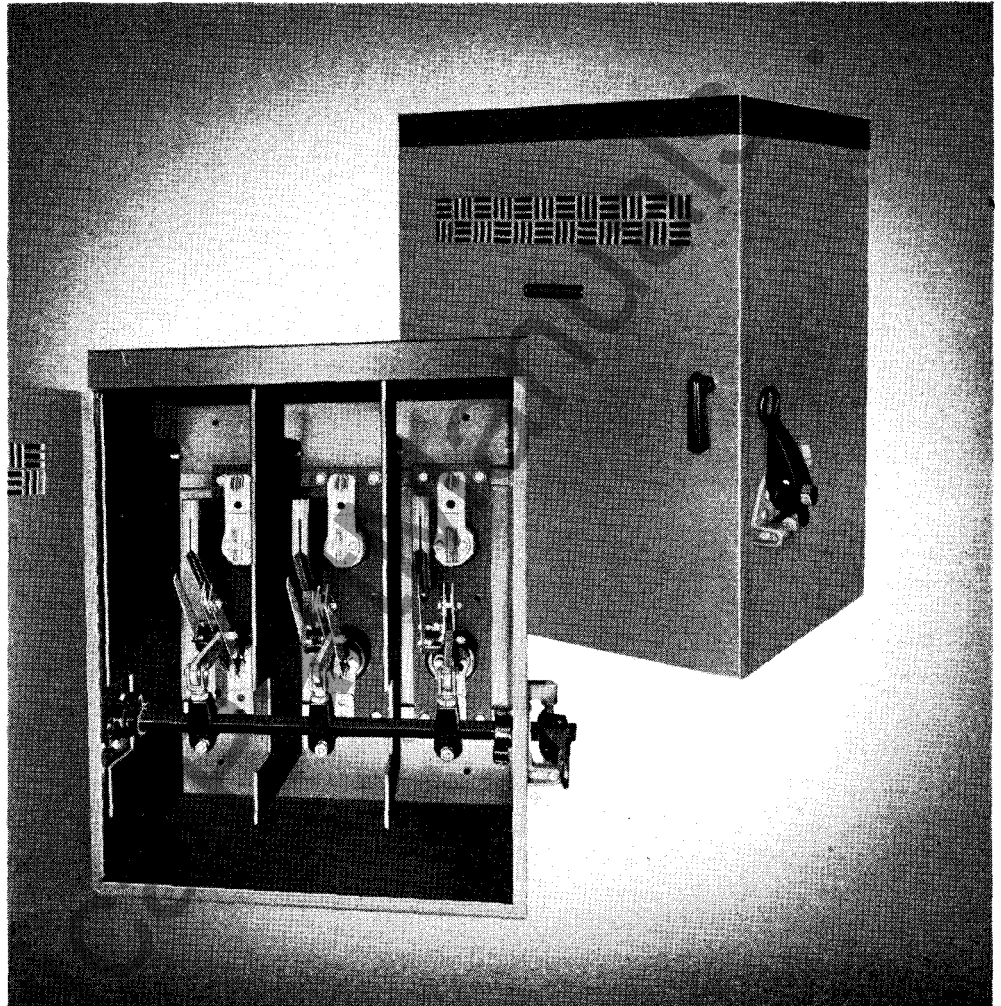
PRICE LIST  
**36-117**

PAGE  
1

5 TO 15 KV

• OPEN OR ENCLOSED

• SINGLE OR DOUBLE THROW



*Van Reed*

\*INDOOR INTERRUPTER SWITCH—TYPE LCB is an adaptation of the "De-ion" arc quenching principle to the standard Type LC indoor disconnecting switch to provide load interrupting ability. It provides safe, non-automatic switching for sectionalizing primary feeders, and isolation for transformer banks, capacitors, voltage regulators, and similar applications. When used in series with Westinghouse Type BA boric acid power fuses, the combination also provides fault protection. The load interrupting rating of the complete device is limited to the capacity of the interrupting element.

\* Outdoor weatherproof enclosures are also available. Refer to Westinghouse.

**WESTINGHOUSE SPECIAL FEATURES**

- QUICK-BREAK PLUS DE-ION<sup>®</sup> ACTION quenches arc, protects main contacts.
- HIGH-PRESSURE (MULTIPLE-LINE) SILVER CONTACTS minimize heating and maintenance.
- NEMA CLASS A DEVICE—500 operations under full load without maintenance.
- NEMA CLASS B DEVICE—100 operations under full load without maintenance.
- B.I.L. INSULATORS meet NEMA standards for Basic Impulse Levels of insulation.

Refer to Selling Policy 36-000 for Standard Terms and Conditions of Sale

Supersedes Price List 36-117 dated September 15, 1952 and  
Supplement to P.L. 36-117, page .01, dated November 17, 1952  
Mailed to: E42-1P; D64-1E; C28-1F

**OCTOBER 12, 1953**

**SWITCHGEAR DEVICES**  
**INDOOR INTERRUPTER SWITCHES**  
**THREE-POLE, GANG-OPERATED • TYPE LCB**



**When ordering, specify:**

**SINGLE THROW**

- Style number.
- Cable size, if terminals are required.
- Fuse refill rating, if other than maximum size is required.
- Modifications, if required, from table below.

**DOUBLE THROW**

- In place of style number, give complete description, including voltage rating, impulse withstand voltage, continuous current rating, and interrupting current rating.
- Cable size, if terminals are required, and description of how cables enter and leave housing. Example: 3 cables in top in 3-inch conduit, 6 cables out bottom in 4-inch conduit.
- Fuse refill rating, if other than maximum size is required.
- Modifications, if required, from table below.

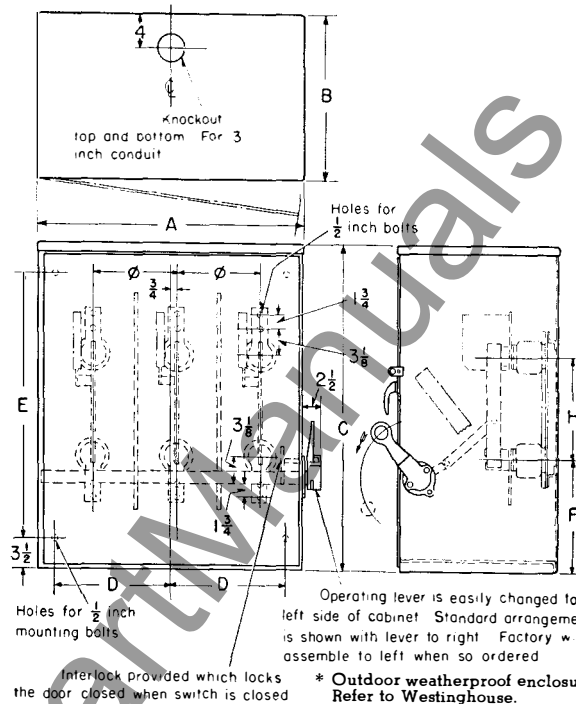
**MODIFICATIONS**

MODIFICATION	LIST PRICE ADDITION
For each through-type cable bushing.....	\$ 16
For each stud-type porcelain bushing.....	28
For each single-conductor pothead—5, and 7.5 kv.....	70
For each single-conductor pothead—15 kv.....	80
For each three-conductor pothead—5, and 7.5 kv.....	200
For each three-conductor pothead—15 kv.....	250
For window in door.....	33
For double door in place of single door.....	40
For free-standing cabinet (either feet or legs.....)	210
For throat for transformer mounting—5, and 7.5 kv.....	210
For throat for transformer mounting—15 kv.....	240

**LITERATURE REFERENCE**

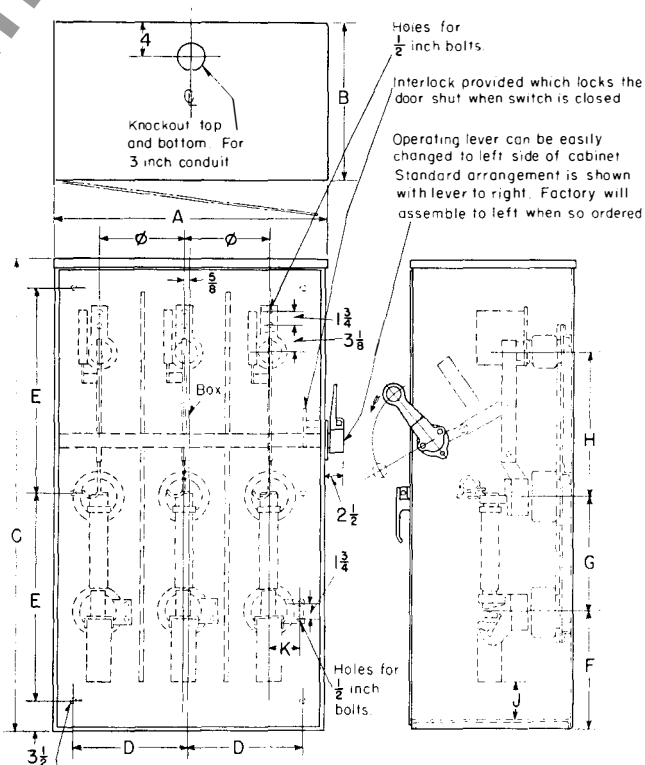
- DESCRIPTION—Refer to Descriptive Bulletin 36-117.

**ENCLOSED TYPE LCB INTERRUPTER SWITCH\***



\* Outdoor weatherproof enclosures are also available. Refer to Westinghouse.

**ENCLOSED TYPE LCB INTERRUPTER SWITCH WITH CONDENSER TYPE BA FUSES†**



† Outdoor Weatherproof Enclosures are also available. Refer to Westinghouse.



**SWITCHGEAR DEVICES**  
**INDOOR INTERRUPTER SWITCHES**  
**THREE-POLE, GANG-OPERATED • TYPE LCB**

PRICE LIST  
**36-117**

**Price Includes:**

- Indoor cabinet with knockouts for conduit. (Other types of cable entrance available at increased price. See Modifications.)
- Three-pole gang-operated LCB switch and pole unit barriers.
- Single conductor terminals for cable sizes up to 600 MCM, or tubing sizes up to 3/4 inch I.P.S. inclusive, if specified on order, giving cable size.

B.I.L. VOLTAGE RATINGS		CURRENT RATINGS			STYLE NUMBER	LIST PRICE	DIMENSIONS IN INCHES							
KV	IMPULSE WITHSTAND KV	CONTINUOUS	INTERRUPTING RATING†				Approximate Only. Do Not Use for Construction Purposes.							
			CLASS A	CLASS B	A	B	C	D	E	F	H	Ø		

**SINGLE THROW**

5	60	400	400	600	1491 181	\$ 755	29	24	41	11	33	16%	9	8 1/4
7.5	75	400	200	600	1491 182	780	29	24	41	11	33	16%	9	8 1/4
15-L	95	400	100	600	1491 183	900	38 3/4	29 1/4	62	15	52	25	12	10 1/2
15-H	110	400	100	600	.....	930	.....	.....	.....	.....	.....	.....	.....	.....

**DOUBLE THROW**

5	60	400	400	600	Order by Description	\$1245	Refer to Westinghouse							
7.5	74	400	200	600		1285								
15-L	95	400	100	600		1460								
15-H	110	400	100	600		1510								

† Class A—Good for 500 operations under full load without maintenance.  
 Class B—Good for 100 operations at 600 amperes without maintenance.

**Price Includes:**

- Indoor cabinet with knockouts for conduit. (Other types of cable entrance available at extra cost. See Modifications.)
- Three-pole gang-operated LCB switch and pole unit barriers.
- Three BA-200 or BA-400 fuses, mountings, fuse holders, condensers, and refills. Specify rating of fuse refill required.
- Terminals for cable sizes up to 600 MCM, or tubing sizes up to 3/4 inch I.P.S. inclusive, if specified on order, giving cable size.

B.I.L. VOLTAGE RATINGS		CURRENT RATING			FUSE *TYPE	STYLE NUMBER	LIST PRICE	DIMENSIONS IN INCHES							
KV	IMPULSE WITHSTAND KV	CONTINUOUS	INTERRUPTING RATING†					Approximate Only. Do Not Use for Construction Purposes.							
			CLASS A	CLASS B	A	B	C	D	E	F	G	H			

**SINGLE THROW**

5	60	200	400	600	BA-200	1491 186	\$1220	35%	24%	63	16	26	15	13 1/16	18 1/2
7.5	75	200	200	600		1491 187	1260	35%	24%	63	16	26	15	13 1/16	18 1/2
15-L	95	200	100	600		1491 188	1450	43	28 1/2	84	18	33	20%	22 7/16	17 1/4
15-H	110	200	100	600	.....	1495	.....	.....	.....	.....	.....	.....	.....	.....	.....
5	60	400	400	600	BA-400	1491 191	1400	38 1/4	26 1/2	67	17	28	19	13 1/16	18 1/2
7.5	75	400	200	600		1491 192	1450	38 1/4	26 1/2	67	17	28	19	13 1/16	18 1/2
15-L	95	400	100	600		1491 193	1650	46%	30	84	20	34	20%	22 7/16	17 1/4
15-H	110	200	100	600		.....	1705	.....	.....	.....	.....	.....	.....	.....	.....

**DOUBLE THROW**

5	60	200	400	600	BA-200	Order by Description	\$1720	Refer to Westinghouse							
7.5	75	200	200	600			1775								
15-L	95	200	100	600			2030								
15-H	110	200	100	600			2095								
5	60	400	400	600	BA-400	Order by Description	1900	Refer to Westinghouse							
7.5	75	400	200	600			1965								
15-L	95	400	100	600			2230								
15-H	110	400	100	600			2280								

\* Refer to Descriptive Bulletin 36-300 for complete information.  
 † Style number does not include fuse refills or terminals. Specify terminal size, maximum size fuse refill will be furnished unless otherwise specified.  
 ‡ Class A—Good for 500 operations under full load without maintenance.  
 Class B—Good for 100 operations at 600 amperes without maintenance.

