

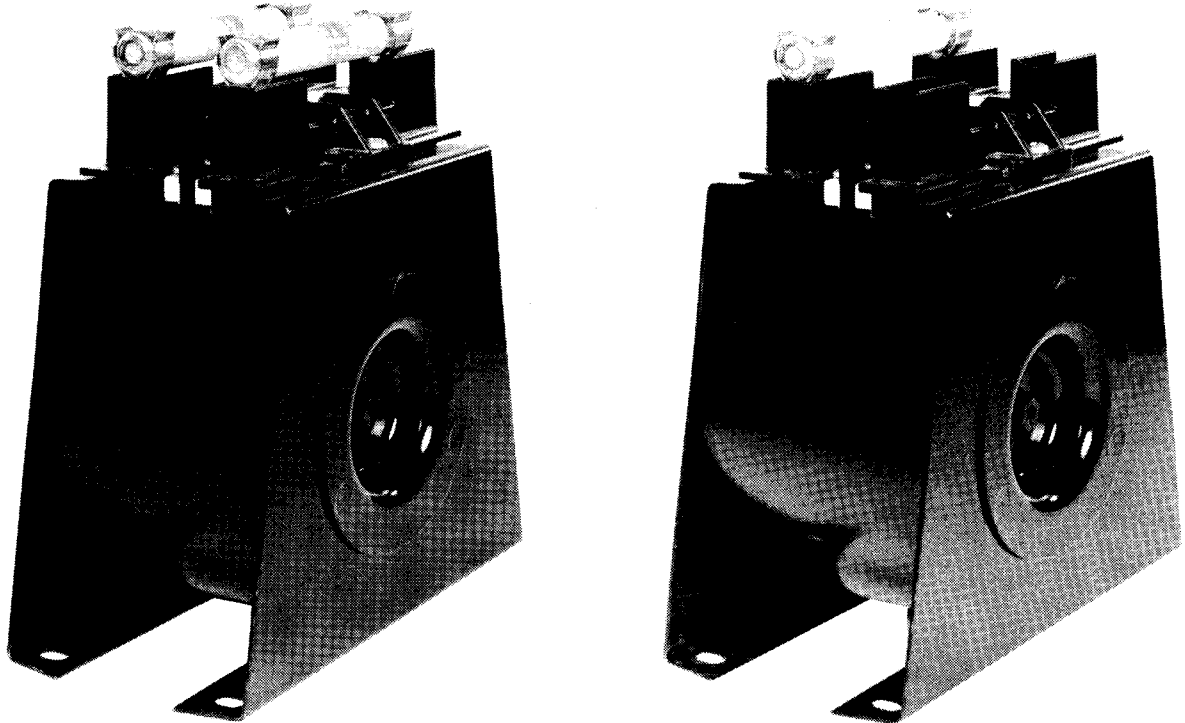


POTENTIAL TRANSFORMERS

240 TO 600 PRIMARY VOLTS INSULATION, CLASS-0.6 KV-50/60 HERTZ

TYPE PT-6

39169
39169



DESCRIPTION

The I-T-E Instrument Transformers are designed to the high accuracy required to meet present day metering problems.

These transformers conform to the accuracy for metering as established in the standard set up for potential transformers by the American Standards Association.

These transformers utilize the wound-core construction well known for its excellent magnetic properties. The highest grade of oriented-grain silicon steel is used and annealing is done in a carefully controlled atmosphere in order to minimize core losses.

Controlled reactance is employed to minimize ratio and phase angle errors, and is accomplished by a precision winding technique developed by I-T-E Engineers. A machine especially designed for toroidal winding is used for winding both primary and secondary coils. The result is exceptional uniformity of performance. The windings are vacuum impregnated with a polymerizing varnish to protect against winding damage due to moisture and vibration. Additional protection against vibration damage is provided by the use of neoprene cushions.

PRICES

Ordering Number	Ratio	Fuses	Metering Accuracy at 60 Hertz				List Price
			W	X	Y	Z	
400765-K1	240/120	2	.3	.3	.3	1.2	\$76.50
400765-K2	288/120	2	.3	.3	.3	1.2	76.50
400765-K3	480/120	2	.3	.3	.3	1.2	76.50
400765-K4	600/120	2	.3	.3	.3	1.2	76.50
400765-K6	240/120	1	.3	.3	.3	1.2	75.50
400765-K7	288/120	1	.3	.3	.3	1.2	75.50
400765-K8	480/120	1	.3	.3	.3	1.2	75.50
400765-K9	600/120	1	.3	.3	.3	1.2	75.50

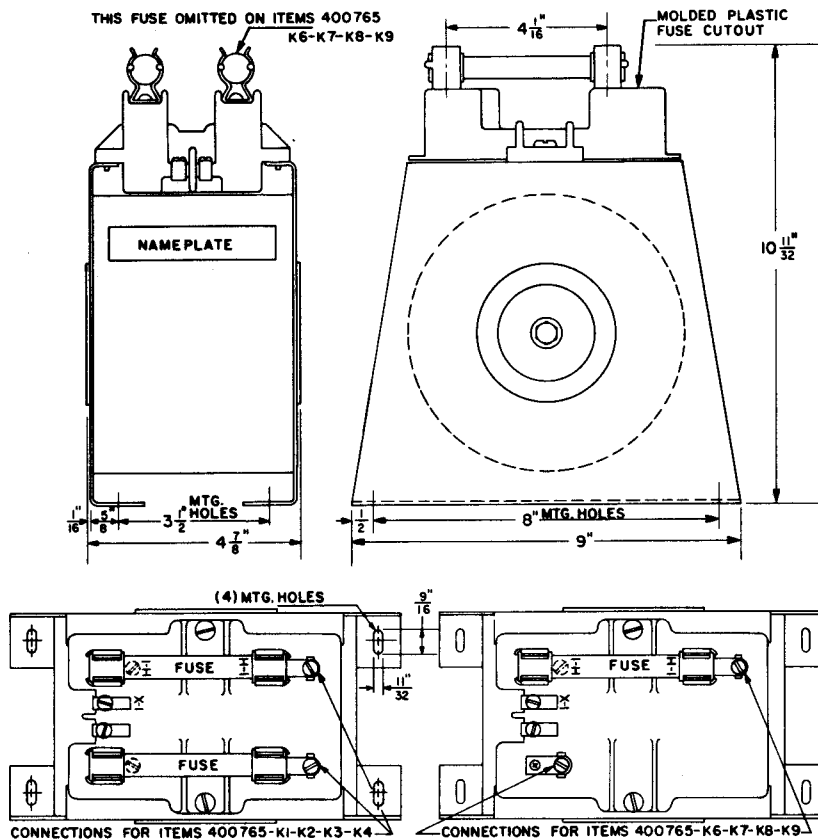
Prices subject to change without notice. Conditions of sale and general policy — see Section A.15.1 of Product Catalog



SWITCHBOARD COMPONENTS

DIMENSIONS

TYPE PT-6



TYPICAL PERFORMANCE CURVES FOR 480/120 VOLT, 60 HERTZ

