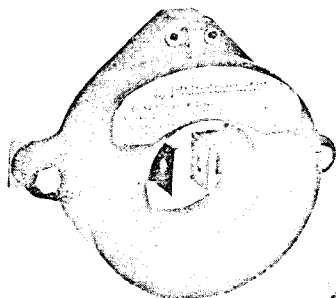


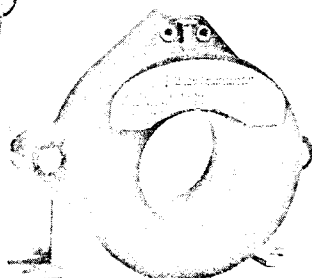
## INSTRUMENT CURRENT TRANSFORMERS

600 VOLTS    25 TO 60 HERTZ    10 KV BIL

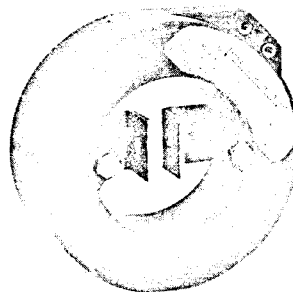
TYPES TKM-1 and TKM-2



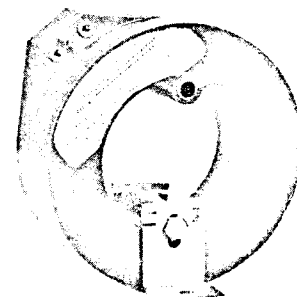
Type TKM-1  
Bus Mounted



Type TKM-1  
Base Mounted



Type TKM-2  
Bus Mounted



Type TKM-2  
Base Mounted

### DESCRIPTION

TKM transformers utilize the wound-core construction well known for its excellent magnetic properties. The highest grade of oriented-grain silicon steel is used and annealing is done in a carefully controlled atmosphere in order to minimize core losses, and exciting current.

The secondary coil is wound automatically by a toroid winding machine which insures firm, evenly distributed windings. Even distribution of the secondary winding greatly reduces leakage reactance and provides a greater degree of accuracy than can be attained by two-coil rectangular core window-type transformers or wound-type transformers with an equivalent number of ampere turns.

#### Core and Coils

The transformer is cast in a semi-flexible epoxy resin providing excellent insulation between the primary conductor and the secondary windings.

The epoxy resin provides a moisture seal and protection from physical damage.

#### Secondary Terminals

Secondary terminals are 10-32 threaded brass inserts.

#### Markings

Each transformer is completely identified with rating, polarity marker, serial number and ordering number.

#### Mounting

Mounting brackets are provided which can be used for either bus mounting or base mounting.

The TKM-1 is designed for mounting in drawout cradles for switchboard use.

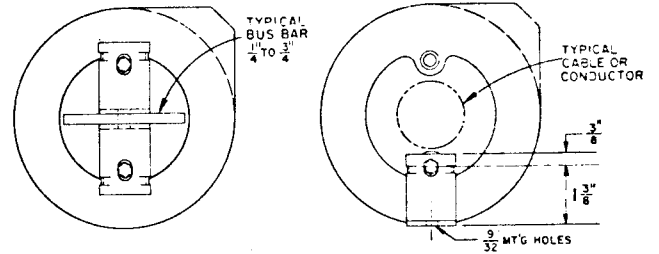
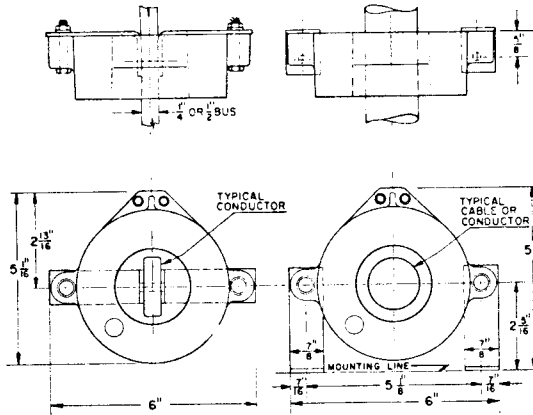
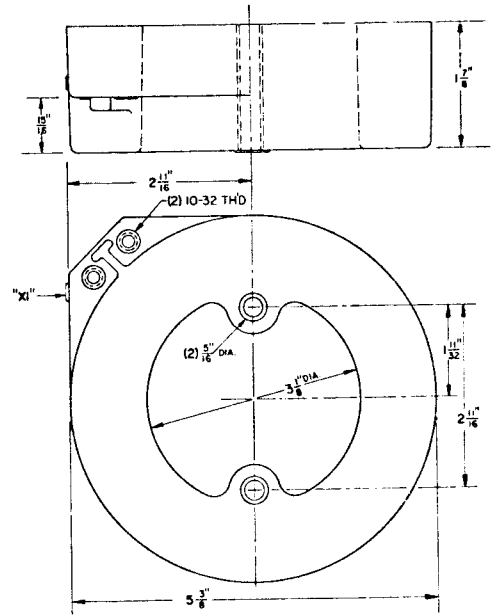
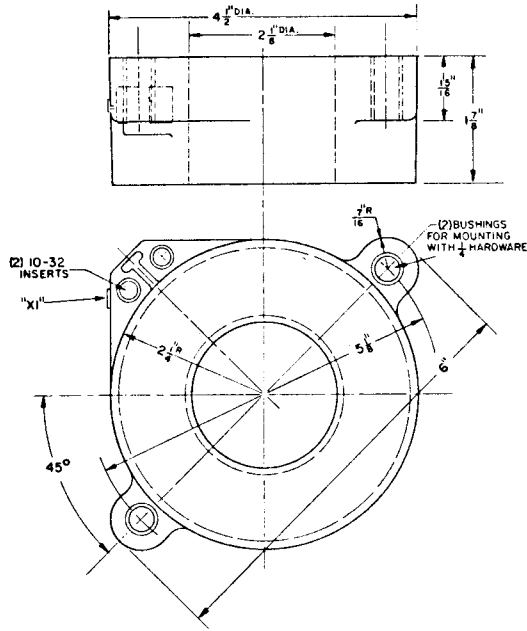
TKM-1

Primary Ampere Rating	Ordering Number	Metering Accuracy Class, 60 Hertz		
		B-0.1	B-0.2	B-0.5
100	401181-T1	1.2	2.4	—
150	401181-T2	0.6	1.2	2.4
200	401181-T3	0.6	0.6	1.2
300	401181-T4	0.6	0.6	1.2
400	401181-T5	0.6	0.6	0.3
500	401181-T6	0.6	0.6	0.3
600	401181-T7	0.6	0.3	0.3
800	401181-T8	0.3	0.3	0.3
1000	401181-T9	0.3	0.3	0.3
1200	401181-T10	0.3	0.3	0.3
1500	401181-T11	0.3	0.3	0.3
2000	401181-T12	0.3	0.3	0.3

TKM-2

Primary Ampere Rating	Ordering Number	Metering Accuracy Class, 60 Hertz		
		B-0.1	B-0.2	B-0.5
150	401184-T1	1.2	1.2	4.8
200	401184-T2	1.2	1.2	2.4
300	401184-T3	0.6	0.6	1.2
400	401184-T4	0.6	0.6	0.6
500	401184-T5	0.6	0.6	0.6
600	401184-T6	0.6	0.6	0.6
800	401184-T7	0.3	0.3	0.3
1000	401184-T8	0.3	0.3	0.3
1200	401184-T9	0.3	0.3	0.3
1500	401184-T10	0.3	0.3	0.3
2000	401184-T11	0.3	0.3	0.3
2500	401184-T12	0.3	0.3	0.3

**DIMENSIONS**

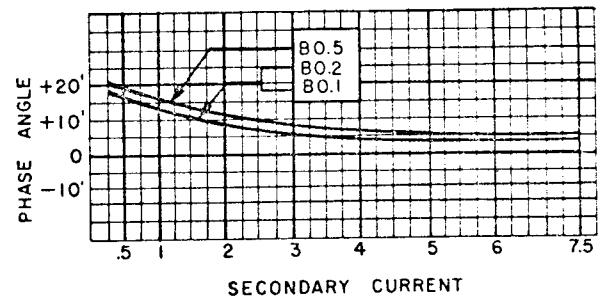
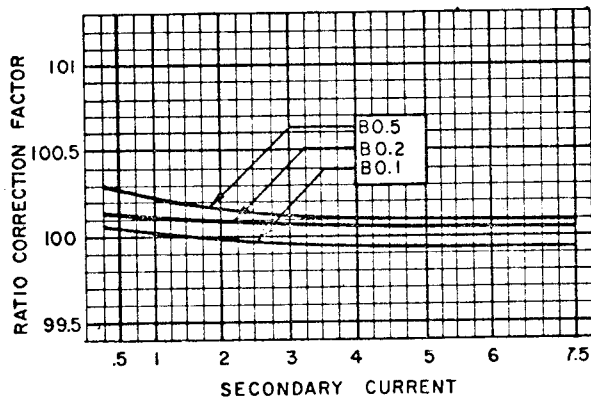


TYPE TKM-1

TYPE TKM-2

**PERFORMANCE CURVES**

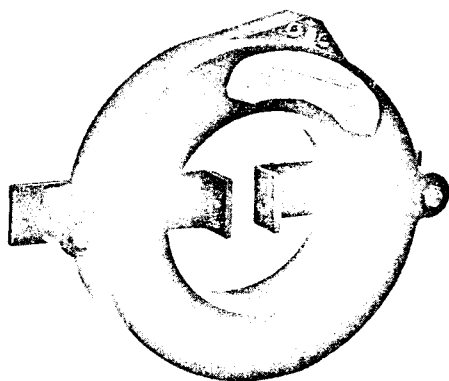
TYPICAL CHARACTERISTIC CURVES AT 60 HZ 800/5 TKM-1 SHOWN



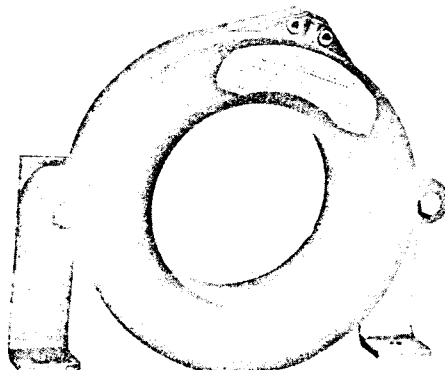
## INSTRUMENT CURRENT TRANSFORMERS

600 VOLTS 25 TO 60 HERTZ 10 KV BIL

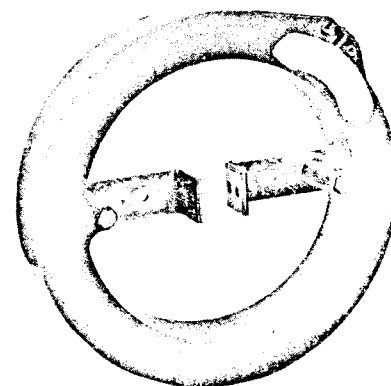
TYPES TKM-3 and TKM-4



TYPE TKM-3  
Bus Mounted



TYPE TKM-3  
Base Mounted



TYPE TKM-4  
Bus Mounted

### DESCRIPTION

TKM transformers utilize the wound-core construction well known for its excellent magnetic properties. The highest grade of oriented-grain silicon steel is used and annealing is done in a carefully controlled atmosphere in order to minimize core losses, and exciting current.

The secondary coil is wound automatically by a toroid winding machine which insures firm, evenly distributed windings. Even distribution of the secondary winding greatly reduces leakage reactance and provides a greater degree of accuracy than can be attained by two-coil rectangular core window-type transformers or wound-type transformers with an equivalent number of ampere turns.

The transformer is cast in a semi-flexible epoxy resin providing excellent insulation between the primary conductor and the secondary windings.

The epoxy resin provides a moisture seal and protection from physical damage.

#### Secondary Terminals

Secondary terminals are 10-32 threaded brass inserts.

#### Markings

Each transformer is completely identified with rating polarity marker, serial number and ordering number.

#### Mounting

Mounting brackets are provided which can be used for either bus mounting or base mounting.

The TKM-3 is designed for mounting in drawout cradles for switchboard use.

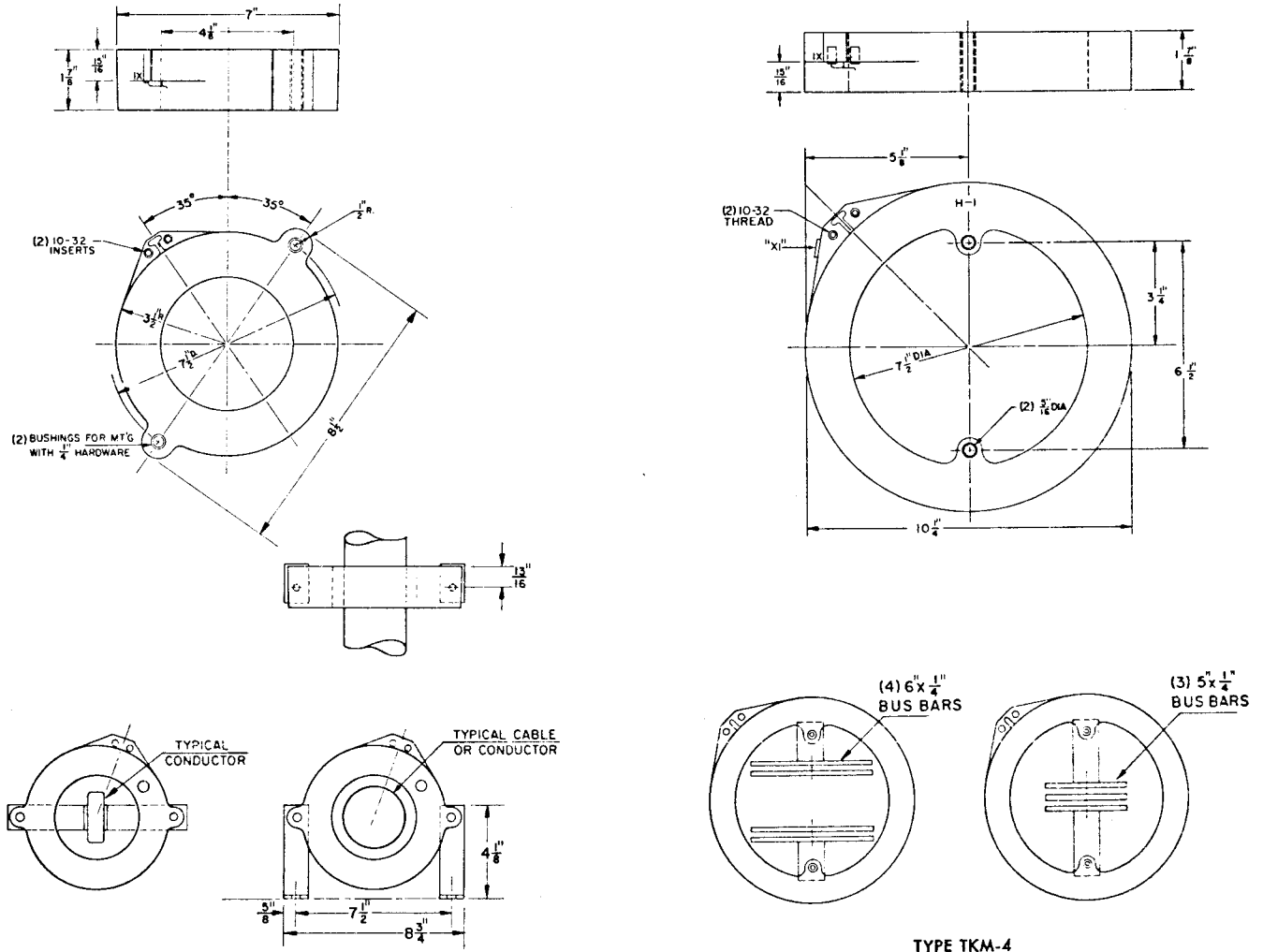
TKM-3

Primary Ampere Rating	Ordering Number	Metering Accuracy Class, 60 Hertz		
		B-0.1	B-0.2	B-0.5
800	401190-T1	0.3	0.3	0.3
1200	401190-T2	0.3	0.3	0.3
1500	401190-T3	0.3	0.3	0.3
2000	401190-T4	0.3	0.3	0.3
2500	401190-T5	0.3	0.3	0.3
3000	401190-T6	0.3	0.3	0.3
4000	401190-T7	0.3	0.3	0.3
5000	401190-T8	0.3	0.3	0.3

TKM-4

Primary Ampere Rating	Ordering Number	Metering Accuracy Class, 60 Hertz		
		B-0.1	B-0.2	B-0.5
800	401310-T1	0.3	0.3	0.3
1000	401310-T9	0.3	0.3	0.3
1200	401310-T2	0.3	0.3	0.3
1500	401310-T3	0.3	0.3	0.3
2000	401310-T4	0.3	0.3	0.3
2500	401310-T5	0.3	0.3	0.3
3000	401310-T6	0.3	0.3	0.3
4000	401310-T7	0.3	0.3	0.3
5000	401310-T8	0.3	0.3	0.3

**DIMENSIONS**



TYPE TKM-3

TYPE TKM-4

**PERFORMANCE CURVES**

TYPICAL CHARACTERISTIC CURVES AT 60 HZ 1500/5 TKM-3 SHOWN

