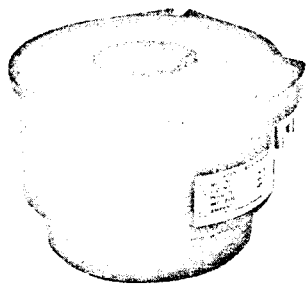


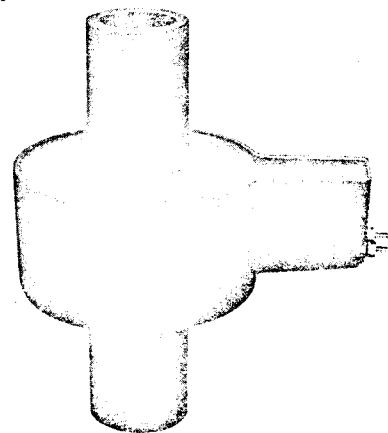
INSTRUMENT CURRENT TRANSFORMERS

5 kV 60 HERTZ 60 kV BIL

TYPES MC-5 AND MCB-5A



Type MC-5
Switchboard Mounted



Type MCB-5A
Bus Mounted

Description:

I-T-E types MC-5 and MCB-5A instrument current transformers are designed especially for use in 5 HK Metal-Clad modified basic units. They have accuracy classifications suitable for the metering and relaying burdens normally encountered in switchgear applications.

The MC-5 current transformer is a window toroidal type that can be mounted on either the upper or lower stationary

primary contacts of 5 HK 250 and 5 HK 350 modified basic units with a 1200 or 2000A. continuous current rating. The MCB-5A current transformer is also a window toroidal type and is designed for mounting over insulated bus and is available for use with 5 HK 350, 3000A modified basic units.

MC-5

| Primary Ampere Rating | Catalog Number | Relaying Accuracy | | Metering Accuracy | | | | |
|-----------------------|----------------|-------------------|------|-------------------|------|------|-----|-----|
| | | 2.5 H | 10 H | BO.1 | BO.2 | BO.5 | B1 | B2 |
| 75 | 400862-T1 | 10 | 10 | 0.6 | 1.2 | — | — | — |
| 100 | 400862-T2 | 10 | 10 | 0.6 | 1.2 | — | — | — |
| 150 | 400862-T3 | 20 | 20 | 0.3 | 0.6 | 1.2 | — | — |
| 200 | 400862-T4 | 20 | 20 | 0.3 | 0.6 | 1.2 | — | — |
| 300 | 400862-T5 | 50 | 50 | 0.3 | 0.3 | 0.3 | 0.6 | 1.2 |
| 400 | 400862-T6 | 50 | 50 | 0.3 | 0.3 | 0.3 | 0.3 | 0.6 |
| 600 | 400862-T7 | 100 | 100 | 0.3 | 0.3 | 0.3 | 0.3 | 0.3 |
| 800 | 400862-T8 | 100 | 100 | 0.3 | 0.3 | 0.3 | 0.3 | 0.3 |
| 1200 | 400862-T9 | 100 | 100 | 0.3 | 0.3 | 0.3 | 0.3 | 0.3 |
| 1500 | 400862-T10 | 200 | 200 | 0.3 | 0.3 | 0.3 | 0.3 | 0.3 |
| 2000 | 400862-T11 | 200 | 200 | 0.3 | 0.3 | 0.3 | 0.3 | 0.3 |

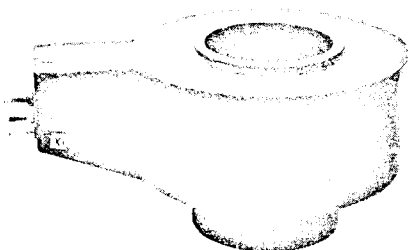
MCB-5A

| Primary Ampere Rating | Catalog Number | Relaying Accuracy | | Metering Accuracy | | | | |
|-----------------------|----------------|-------------------|------|-------------------|------|------|-----|-----|
| | | 2.5 H | 10 H | BO.1 | BO.2 | BO.5 | B1 | B2 |
| 1200 | 401024-T1 | 100 | 200 | 0.3 | 0.3 | 0.3 | 0.3 | 0.3 |
| 1500 | 401024-T2 | 200 | 200 | 0.3 | 0.3 | 0.3 | 0.3 | 0.3 |
| 2000 | 401024-T3 | 200 | 200 | 0.3 | 0.3 | 0.3 | 0.3 | 0.3 |
| 2500 | 401024-T4 | 200 | 200 | 0.3 | 0.3 | 0.3 | 0.3 | 0.3 |
| 3000 | 401024-T5 | 200 | 200 | 0.3 | 0.3 | 0.3 | 0.3 | 0.3 |

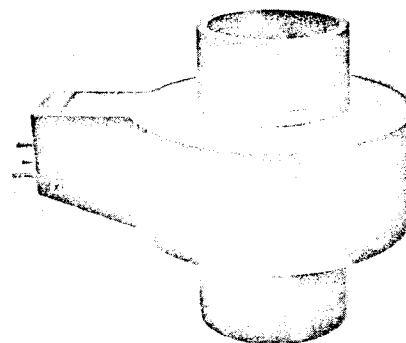
INSTRUMENT CURRENT TRANSFORMERS

15 kV 60 HERTZ 95 kV BIL

TYPES MC-15A1 AND MCB-15A



Type MC-15A1



Type MCB-15A

Description:

I-T-E types MC-15A1 and MCB-15A instrument current transformers are designed especially for use in 7.5 and 15 HK Metal-Clad modified basic units. They have accuracy classifications suitable for the metering and relaying burdens normally encountered in switchgear applications.

The MC-15A1 current transformer is a window toroidal type with an integral primary conductor that can be used

with 7.5 HK 500, 15 HK 500, 15 HK 750 and 15 HK 1000 modified basic units with a 1200 or 2000A continuous current rating. The MCB-15A current transformer is also a window toroidal type and is designed for mounting over insulated bus and is available for use with 15 HK 1000, 3000A modified basic units.

MC-15A1

| Primary Ampere Rating | Catalog Number | Relaying Accuracy | | Metering Accuracy | | | | |
|-----------------------------|-------------------|-------------------|------|-------------------|------|------|-----|-----|
| | | 2.5 H | 10 H | BO.1 | BO.2 | BO.5 | B1 | B2 |
| 75 | 401160-T1 | 10 | 10 | 0.6 | 1.2 | — | — | — |
| 100 | 401160-T2 | 10 | 10 | 0.6 | 1.2 | — | — | — |
| 150 | 401160-T3 | 20 | 20 | 0.3 | 0.6 | 1.2 | — | — |
| 200 | 401160-T4 | 20 | 20 | 0.3 | 0.6 | 1.2 | — | — |
| 300 | 401160-T6 | 50 | 50 | 0.3 | 0.3 | 0.3 | 0.6 | 1.2 |
| 400 | 401160-T7 | 50 | 50 | 0.3 | 0.3 | 0.3 | 0.3 | 0.6 |
| 600 | 401160-T9 | 100 | 100 | 0.3 | 0.3 | 0.3 | 0.3 | 0.3 |
| 800 | 401160-T10 | 100 | 100 | 0.3 | 0.3 | 0.3 | 0.3 | 0.3 |
| 1200 | 401160-T12 | 100 | 100 | 0.3 | 0.3 | 0.3 | 0.3 | 0.3 |
| 1500 | 401160-T13 | 200 | 200 | 0.3 | 0.3 | 0.3 | 0.3 | 0.3 |
| 2000 | 401160-T14 | 200 | 200 | 0.3 | 0.3 | 0.3 | 0.3 | 0.3 |

MCB-15A

| Primary Ampere Rating | Catalog Number | Relaying Accuracy | | Metering Accuracy | | | | |
|-----------------------------|-------------------|-------------------|------|-------------------|------|------|-----|-----|
| | | 2.5 H | 10 H | BO.1 | BO.2 | BO.5 | B1 | B2 |
| 1200 | 401024-T9 | 100 | 200 | 0.3 | 0.3 | 0.3 | 0.3 | 0.3 |
| 1500 | 401024-T10 | 200 | 200 | 0.3 | 0.3 | 0.3 | 0.3 | 0.3 |
| 2000 | 401024-T11 | 200 | 200 | 0.3 | 0.3 | 0.3 | 0.3 | 0.3 |
| 2500 | 401024-T12 | 200 | 200 | 0.3 | 0.3 | 0.3 | 0.3 | 0.3 |
| 3000 | 401024-T13 | 200 | 200 | 0.3 | 0.3 | 0.3 | 0.3 | 0.3 |