

Internally Operated Tap Changer Mechanism

INSTRUCTIONS

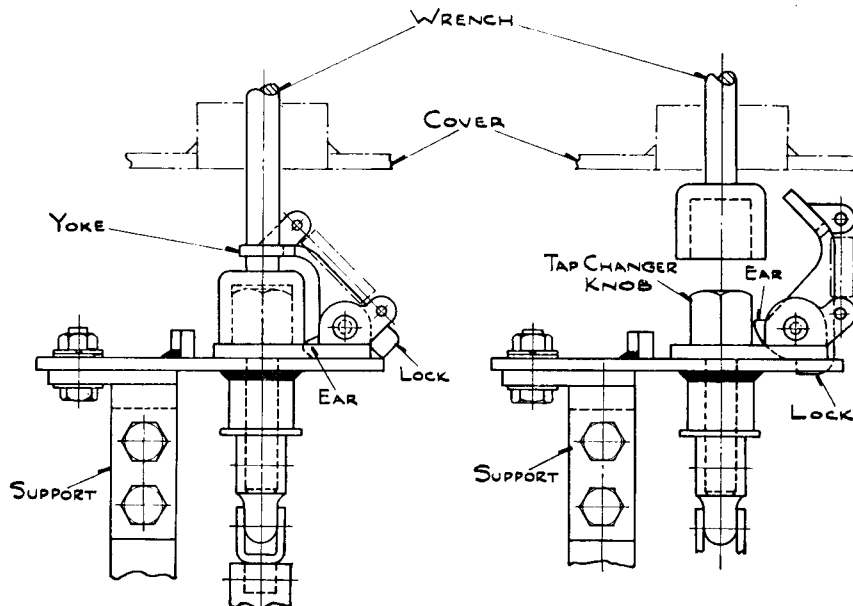


FIG. 1—UNLOCKED POSITION
INTERNALLY OPERATED
TAP CHANGER MECHANISM

FIG. 2—LOCKED POSITION
INTERNALLY OPERATED
TAP CHANGER MECHANISM

GENERAL

The internally operated tap changer mechanism has been designed to reduce the possibility of accidentally leaving the tap changer between positions. The tap changer must be on position before the operating wrench can be removed and the pipe plug replaced in the cover. Only an occasional inspection is required.

OPERATION

The lock on the mechanism is fully automatic. When the wrench (use only special wrench supplied with transformer) is inserted through the opening in the cover it strikes an ear on the lock. As the ear is pushed downward the lock disengages from the indicator plate slot and closes a yoke down over the wrench. See Fig. 1 and 2. The tap changer can now be moved to the desired position. The upper part of the mechanism covers the number on the indicator plate when the tap changer is on position. Stops on the indicator plate prevent the mechanism from turning the tap changer beyond its limiting positions. Fig. 3.

If tap changer is left between positions, the wrench cannot be removed since the locking latch rests on the edge of the indicator plate keeping the yoke around the stem of the wrench. When the tap changer is on position, the wrench can be removed by pulling upward. After removing the wrench apply vaseline to the pipe plug and screw tightly into place.

MAINTENANCE

This mechanism does not require any servicing other than routine inspection to keep it in operating condition. Tighten the plug periodically. Every

year whether or not it is desired to operate the tap changer, remove the plug and apply vaseline on the threads.

If a spring on the latch breaks it will be necessary to remove the cover and take out the pieces. Do not allow the pieces of the spring to drop into the transformer.

RENEWAL PARTS

Order new springs, special wrench or any other parts from nearest Westinghouse Electric & Manufacturing Co. Office or from the Sharon, Pa., Works. Specify serial number of transformer with order.

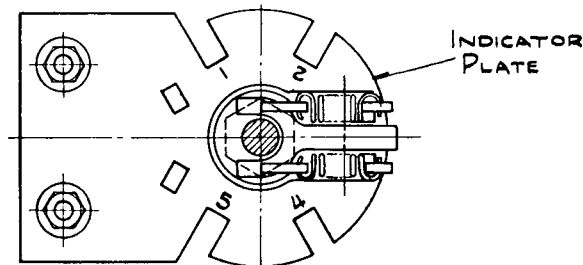


FIG. 3—INTERNALLY OPERATED TAP CHANGER MECHANISM
TOP VIEW

Westinghouse Electric & Manufacturing Company

Sharon, Pa.

Westinghouse Press
Printed in U.S.A. (Rep. 12-42)

EVERY HOUSE NEEDS WESTINGHOUSE