



# DESCRIPTION • OPERATION • MAINTENANCE INSTRUCTIONS

## INTERNAL OPERATING MECHANISM FOR TYPES "RS" AND "WSB" TAP CHANGERS

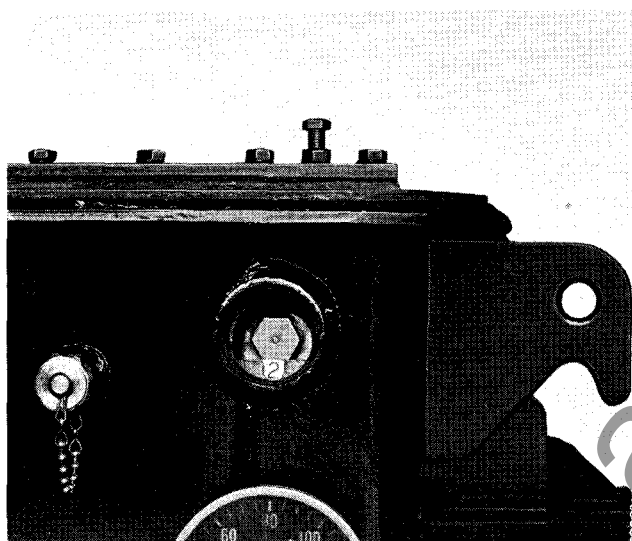


FIG. 1. Internal Operating Mechanism Mounted in Transformer.

THE INTERNAL OPERATING MECHANISM permits operation of Types "RS" and "WSB" tap changers through a pipe plug opening in

the transformer case or cover. It is operated by means of a special wrench. The tap changer must be on position before the wrench can be removed and the pipe plug replaced. This reduces the possibility of accidentally leaving the tap changer between positions. One complete revolution of the wrench is required to change from one tap position to the next. A Geneva-gear driven position indicator is an integral part of the mechanism.

One operating wrench is supplied for each order for one or more network transformers.

### OPERATION

After removing the pipe plug, the special wrench is inserted with its flat side adjacent to the position indicator. The wrench is then turned one complete revolution for each tap position change until the desired position is reached. The tap changer may be turned in either direction from any position. Available voltages and the respective tap changer positions are shown on the transformer diagram instruction plate. These tap chang-

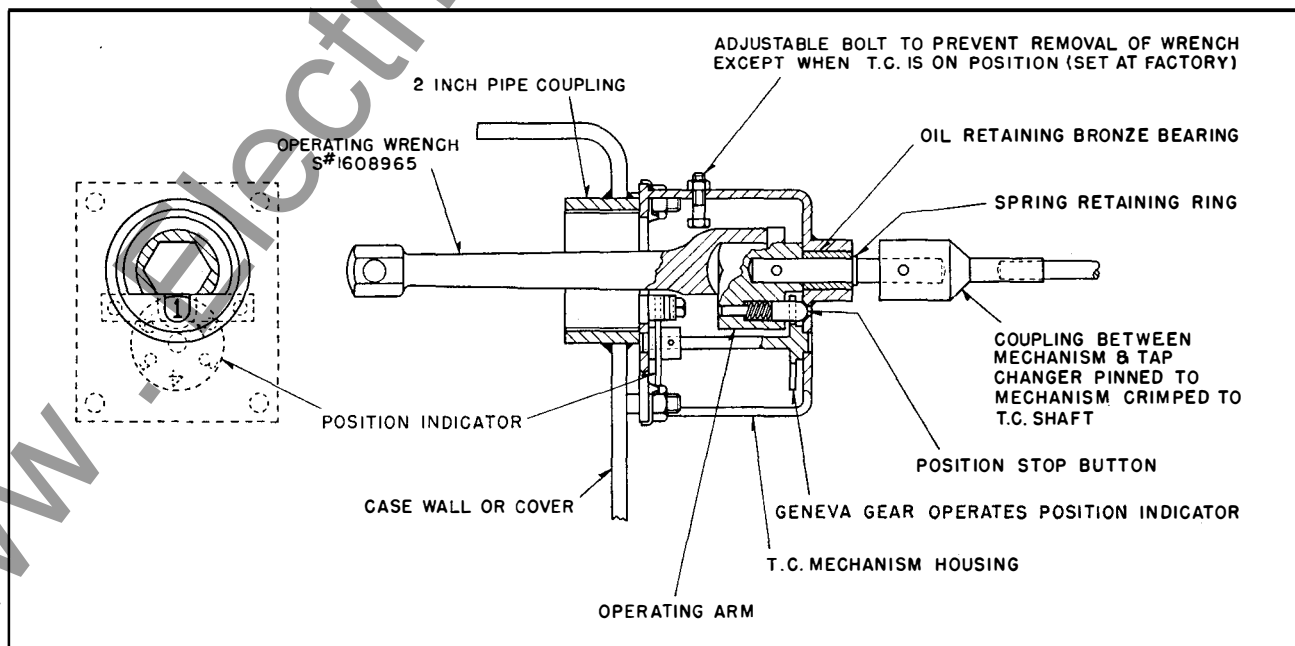


FIG. 2. Cutaway View of Operating Mechanism.