

Instructions for Junction Block, Type WSL



I. L. 47-069-9

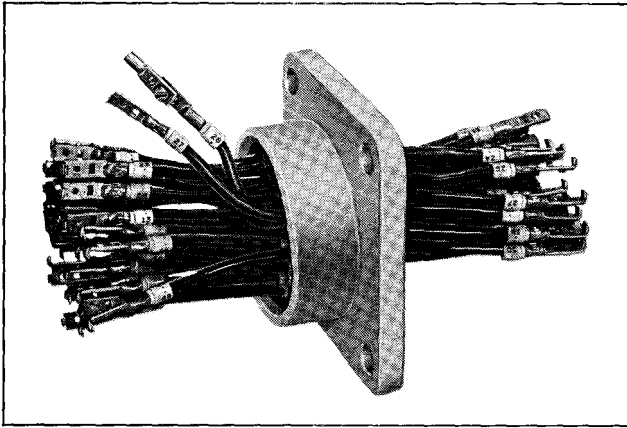


Fig. 1 WSL Junction Block (37 lead)

The Westinghouse WSL Junction Block, used for oil apparatus only, brings current and/or potential transformer leads through the tank wall or cover.

The device consists of 7, 19, or 37 wires passing through a semi-plastic material supported between two micarta discs in an aluminum housing. (See Figures 1 to 3). The mastic remains flexible down to -40°C and adheres tightly to the wires and the housing wall. This provides a leak-proof seal through the operating temperature and pressure range of the transformer.

Each wire of the junction block is insulated and provided with an AMP captive screw disconnect terminal S#593A907H02 and insulator 33748 (Westinghouse S#256A150H24). Identification markers on each end of each wire, make it unnecessary to ring out the wire before making the connection.

External Wiring Connection Procedure

- (1) Bring ends of external leads into the block housing. The slanting design

of the front of the housing provides ample working space. Spread out and position the leads with regard to terminal markings so as to obtain a neat, orderly assembly when complete. Cut each lead as needed to the correct length.

- (2) Pick out the correct wire by means of the numeral marker on the lead.
- (3) Slip the insulating sleeve back onto the insulated wire.
- (4) Crimp or swedge the control wire into the captive screw (S#593A907H01) shipped detail, pneumatic gun #69005 with indenter #38415 or AMP hand tool #49935, #49900, or equivalent.
- (5) Connect the captive screw terminals.
- (6) Slip insulating sleeve back over both halves of the connection.

Unused wires or connectors should have the connectors left on and the insulating sleeve drawn down over the connectors.

Terminals which must be grounded during test, may be disconnected from their normal connection and connected to a captive screw terminal crimped onto a ground wire. If more than one lead must be connected to ground at one time, use #15 or #16 cable as ground lead and make as many stubs as needed for connectors by doubling sections of the cable back on itself. (See Figure 4)

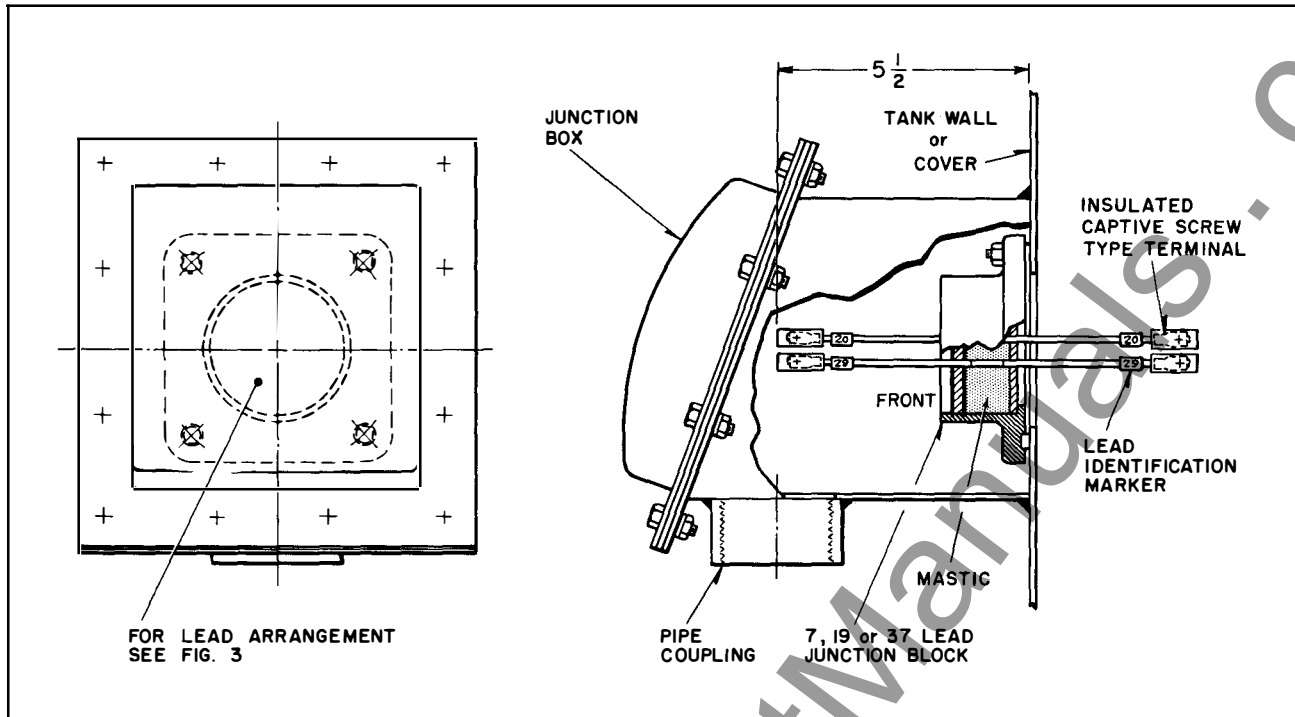


Fig. 2 Junction Block Housing

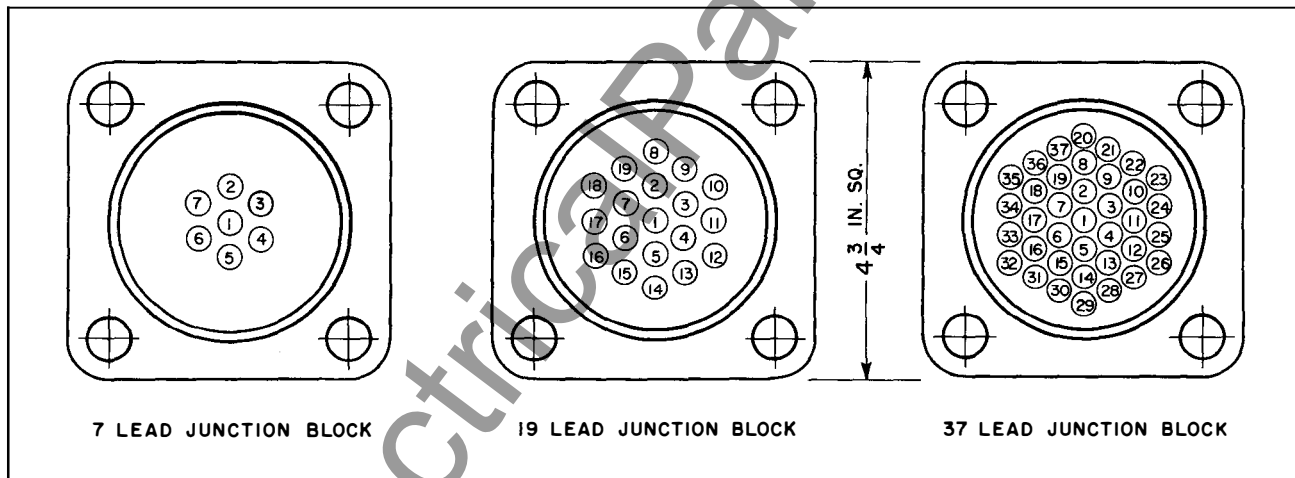


Fig. 3 Lead Arrangement of Junction Blocks (front view)

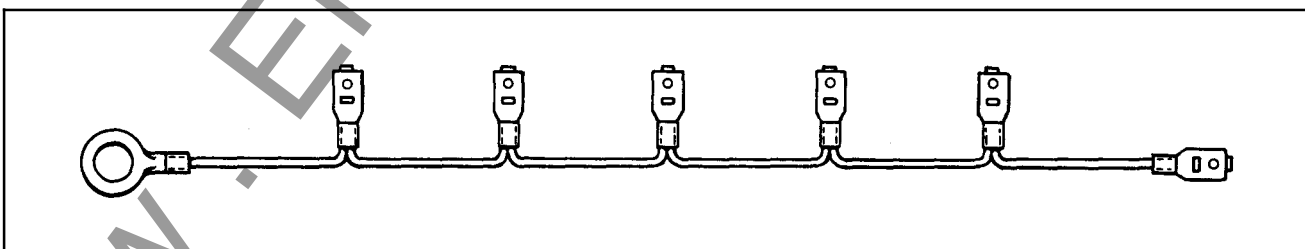


Fig. 4 Hook-up for Ground Connections