

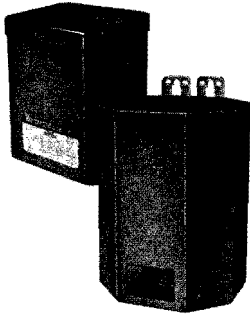
Westinghouse



Specialty Dry Type Distribution Transformers

5000 Volts and Below

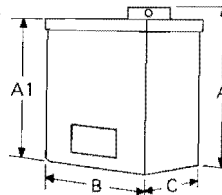
Type EP "Green Line"



120, 240, 480, 600, 2400, 4160 Primary Volts
12, 24, 32, 120, 240 Secondary Volts
.250 Through 25 Kva – Single Phase

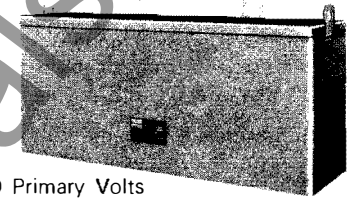
An industrial control transformer completely enclosed, and supplied in either two-winding or auto-transformer types. These are general purpose transformers which lend themselves to regular industrial applications such as lighting, resistance heating, small motors, contactors, etc., as well as for enclosed control transformers for auxiliary mounting. Conveniently located knockouts are provided for customer conduit connections. "King size" wiring compartment with removable access doors, provides generous space for customer's electrical connections. Each transformer is provided with a connection diagram and table of connections. Mounts in any position. Complete application details may be found in TD 46-860.

2 Kva and Below, Single Phase



Kva	Dimension				Net Wt.: Lbs.
	A	A1	B	C	
¼	7 ¹ / ₁₆	6 ³ / ₁₆	4 ¹ / ₁₆	4 ¹ / ₁₆	12
½	7 ¹ / ₁₆	6 ³ / ₁₆	4 ³ / ₁₆	4 ³ / ₁₆	13
¾	7 ⁷ / ₁₆	6 ¹ / ₁₆	6	5 ¹ / ₁₆	20
1	8 ³ / ₁₆	7 ¹ / ₁₆	6	5 ¹ / ₁₆	26
1½	9 ¹ / ₁₆	8 ¹ / ₁₆	6 ³ / ₁₆	6 ³ / ₁₆	36
2	10 ¹ / ₁₆	9 ¹ / ₁₆	6 ³ / ₁₆	6 ³ / ₁₆	40

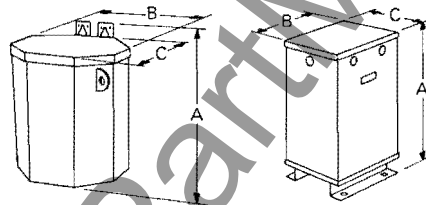
Type EPT "Green Line"



480, 600 Primary Volts
208, 240 Secondary Volts
3 Through 30 Kva – Three Phase

Compound embedded completely enclosed construction provides smallest size and lowest possible sound level performance. Since core and coils are sealed from atmosphere, this design offers the greatest versatility possible in power circuit application and in choice of mounting location or position. Structural strength of embedded construction offers unlimited use in high shock areas and in contaminated atmospheres.

3 Through 25 Kva, Single Phase



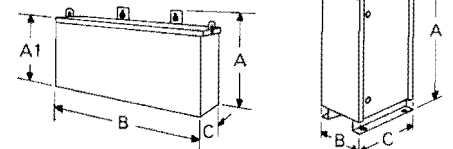
3-25 Kva Wall Mounted

25 Kva Floor Mounted

Kva Rating	Dimension, In. ①			Approx. Net Wt.: Lbs.
	A	B	C	
3	14 ¹ / ₄	7 ¹ / ₂	7 ¹ / ₂	48
5	15 ³ / ₈	9 ³ / ₈	9	75
7 ¹ / ₂	16	12	10 ¹ / ₂	102
10	19	12	10 ¹ / ₂	128
15	19	12	10 ¹ / ₂	158
25	21 ¹ / ₁₆	15 ¹ / ₄	14 ¹ / ₄	247
25②	17 ¹ / ₄	15 ¹ / ₂	13 ¹ / ₂	247

① For diagrams and detailed dimensions, by frame number, consult Westinghouse.
② Floor Mounted.

3 Through 30 Kva, Three Phase



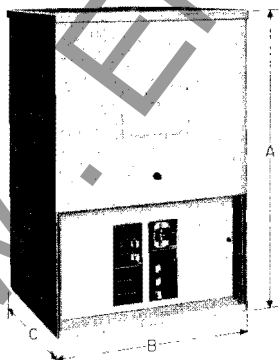
3-30 Kva Wall Mounted

30 Kva Floor Mounted

Kva	Dimension, In. ①				Net Wt.: Lbs.
	A	A1	B	C	
3	13 ³ / ₈	9 ³ / ₈	15 ¹ / ₁₆	8 ³ / ₁₆	70
6	15 ¹ / ₂	12 ¹ / ₁₆	16 ³ / ₈	7 ¹ / ₂	115
9	15 ¹ / ₂	12 ¹ / ₁₆	16	9 ¹ / ₁₆	160
15	17 ¹ / ₂	13 ³ / ₈	20	8 ¹ / ₁₆	210
30	21 ¹ / ₂	18 ³ / ₁₆	21 ¹ / ₁₆	11 ¹ / ₁₆	385
30②	25 ¹ / ₁₆	...	11	20 ¹ / ₁₆	405

① For diagrams and detailed dimensions, by frame number, consult Westinghouse.
② Floor Mounted.

Indoor-Outdoor "Green Line" Mini-Power Center



Single Phase, 60 Hertz

The Westinghouse Green Line Mini-Power Center offers one unit installation of a Green Line dry type potted transformer in combination with primary and secondary breakers. This single unit can be installed in place of the usual three separate components – primary breaker, transformer, and panelboard – saving up to 31% of the cost of time and material in installation. It is the ideal system for installation in automatic car washes, sewage disposal plants, parking lots, warehouses and professional buildings. It can be used as a portable temporary power center and will supply power to work benches, test benches, assembly lines and production line soldering guns.

General Catalog Reference 46-800

1 Phase, 60 Hertz

480 Volts Primary (2-5% FCBN taps) to 120/240 Volts Secondary

Kva	Catalog Numbers ②	Dimensions in Inches			Weight Lbs.
		ΦA	B	C	
3	6E3444	17.62	9.56	8.88	50
5	6E3445	17.62	9.56	8.88	78
7 ¹ / ₂	6E3446	19.62	11.80	11.00	105
10	6E3447	19.62	11.80	11.00	131
15	6E3448	20.12	12.30	10.44	161
25	6E3449	23.12	15.52	14.06	250

① Case only. Add 3.14 inches for mounting brackets for 3 through 15 Kva and 4.18 inches for 25 Kva. For detailed dimensions, consult Westinghouse.

② Catalog number includes the primary breaker but provisions only for one inch plug in secondary circuit breakers.

March, 1973

Supersedes SD 46-880, pages 1 & 2, dated April, 1971
E, D/2071/DB; E, D, C/2605

